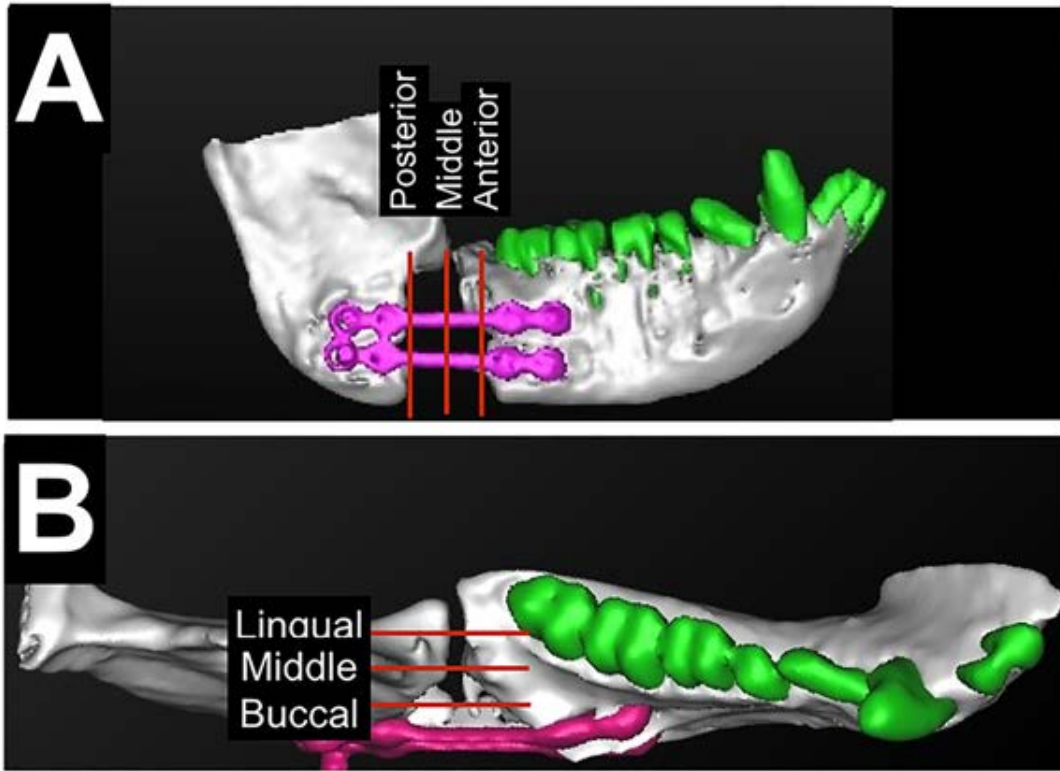


# Supplemental Figure 1



## Supplemental data

Table 1. The bone density (HU) at three different zone within Axial, Coronal, and Sagittal places of CBCTs taken at 6 and 12 weeks.

Statistical significance: anti-BMP-2 mAb vs. Isotype mAb: \* $P < 0.05$ , \*\* $P < 0.01$

### 1. Axial

	Superior	Middle	Inferior			
Pre-op	814±236	637±179	424±128			
	6 week			12 week		
	Superior	Middle	Inferior	Superior	Middle	Inferior
anti-BMP-2 mAb	106±117**	167±118**	145±75**	61±153	250±167**	150±126*
Isotype mAb	-119±110	-61±171	-137±94	-43±118	-73±171	-52±207

### 2. Coronal

	Anterior	Middle	Posterior			
Pre-op	726±111	727±184	889±190			
	6 week			12 week		
	Anterior	Middle	Posterior	Anterior	Middle	Posterior
anti-BMP-2 mAb	150±167	94±137*	137±201	122±226*	44±185	190±170
Isotype mAb	41±200	-33±110	-27±119	-67±134	-20±224	113±193

### 3. Sagittal

	Buccal	Middle	Lingual			
Pre-op	896±183	911±126	914±241			
	6 week			12 week		
	Buccal	Middle	Lingual	Buccal	Middle	Lingual
anti-BMP-2 mAb	48±112**	100±101**	92±109*	17±251	105±155	176±117*
Isotype mAb	-268±230	-138±133	-23±103	-103±116	-38±197	8±150