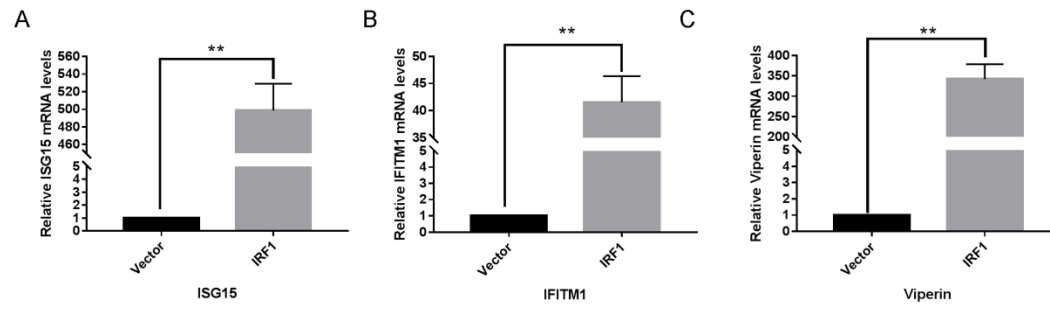


Figure. S1



**Figure S1.** Fe-IRF1 upregulate the mRNA expression of ISG15, IFITM1 and Viperin. CRFK cells were transfected with 500 ng/well of the pMYC-IRF1. At 24 h post-transfection, the mRNA expression of ISG, IFITM1 and Viperin was detected by qRT-PCR method. Error bars represent standard deviations and each sample was run in triplicate. \*,  $P < 0.05$ ; \*\*,  $P < 0.01$ .