

Figure S1

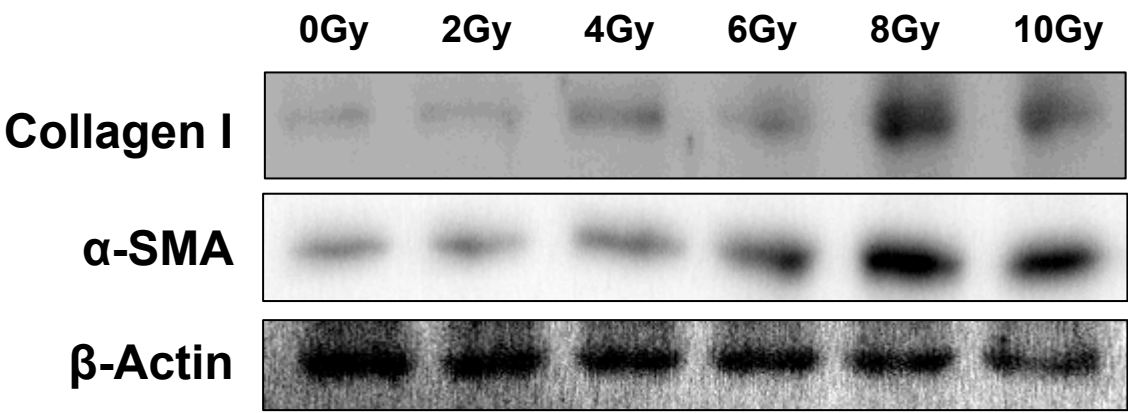


Fig S1. Cells were exposed to 0, 2, 4, 6, 8, 10 Gy of x-ray radiation.

Figure S2

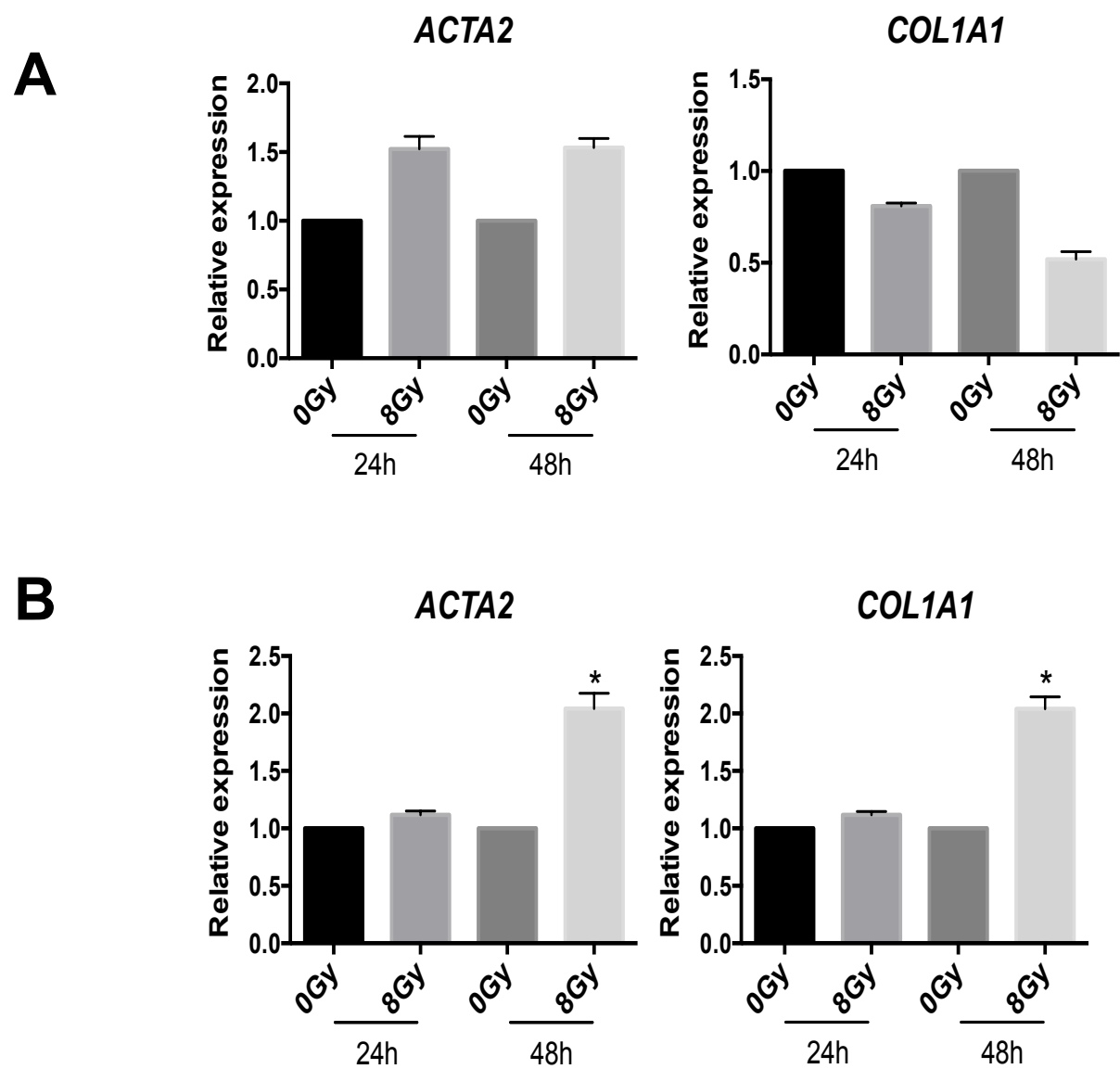


Fig S2. Panel A: HUVECs were pre-incubated in the presence or absence of irradiation and then co-incubated with MRC-5 cells (non-contact). After incubation for 24 or 48 h, the MRC-5 cells were harvested. Total RNA were extracted. Real-time qPCR shows the transcriptional expression of *COL1A1* and *ACTA2*. Panel B: HUVECs were pre-incubated in the presence or absence of radiation and then co-incubated with MRC-5 cells (contact). After incubation for 24 or 48 h, the MRC-5 cells were sorted by flow cytometry and harvested. Real-time qPCR was performed to examine total RNA. Error bars represent SEM from three replicates (*P<0.05).

Figure S3

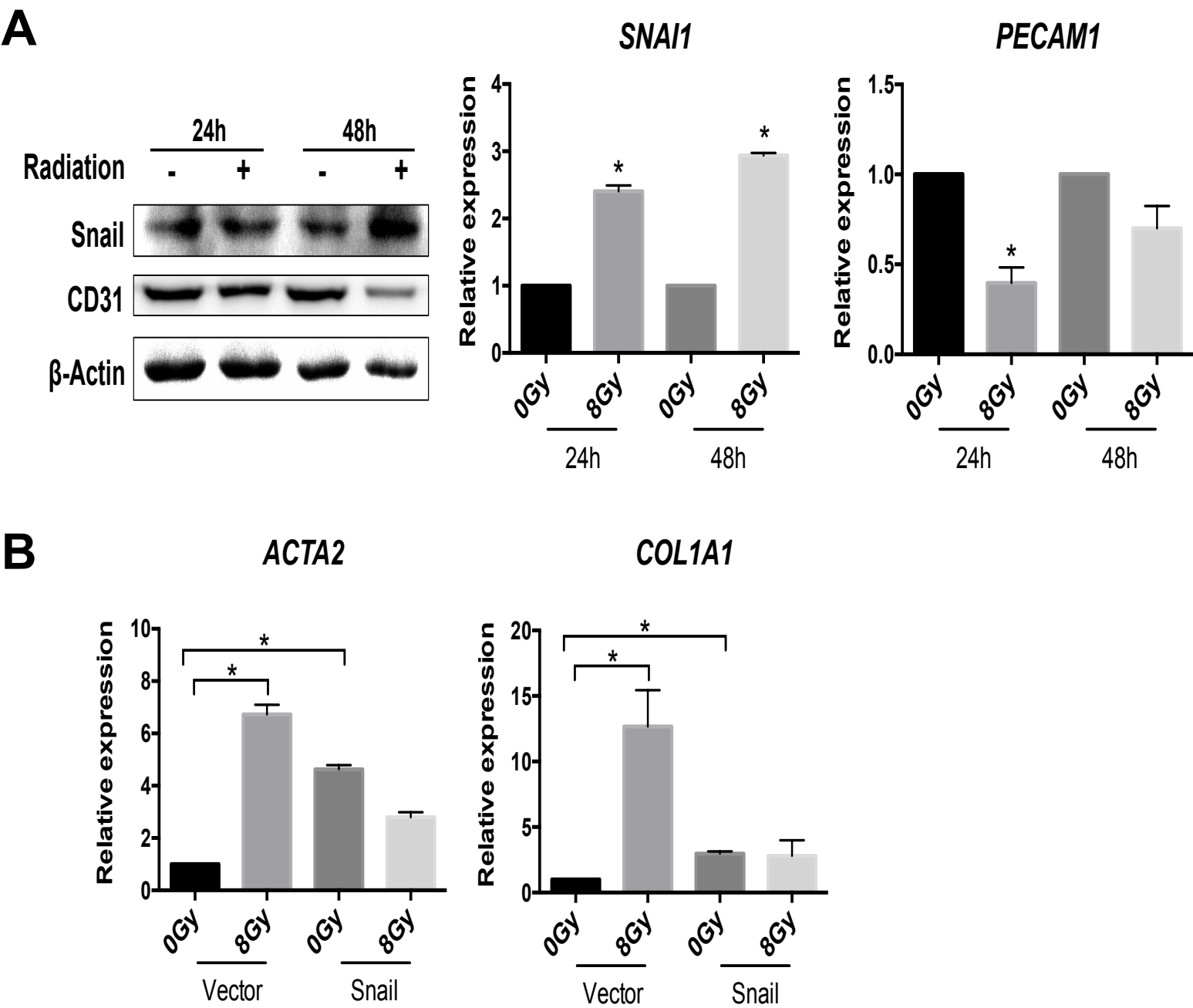


Fig S3. Panel A: HUVECs were incubated in the presence or absence of irradiation. After incubation for 24 or 48 h, cells were harvested. Total RNA and protein were extracted. The expression of Snail and CD31 were examined. Panel B: HUVECs overexpressing Snail were pre-incubated in the presence or absence of irradiation and then co-incubated with MRC-5 (contact). After incubation for 48 h, cells were sorted by flow cytometry and MRC-5 were harvested. Total RNA was extracted and examined.

Table S1. PCR primers for quantitative PCR.

	Forward Primer	Reverse Primer
<i>ACTA2</i>	AAAAGACAGCTACGTGGGTGA	GCCATGTTCTATCGGGTACTTC
<i>COL1A1</i>	GAGGGCCAAGACGAAGACATC	CAGATCACGTCATCGCACAAAC
<i>SNAIL</i>	TCGGAAGCCTAACTACAGCGA	AGATGAGCATTGGCAGCGAG
<i>PECAM1</i>	AACAGTGTTGACATGAAGAGCC	TGTAAAACAGCACGTCATCCTT
<i>ACTB</i>	CATGTACGTTGCTATCCAGGC	CTCCTTAATGTCACGCACGAT