

Research Article

The Effect of Tanreqing Injection on the Pharmacokinetics of Sirolimus in Rats

Feng Zhang, Liang Sun, Jianxiu Zhai, Tianyi Xia, Wei Jiang, Mingming Li, Shouhong Gao , Xia Tao, Wansheng Chen , and Yifeng Chai 

Department of Pharmacy, Changzheng Hospital, Second Military Medical University, Shanghai 200003, China

Correspondence should be addressed to Wansheng Chen; chenwansheng@smmu.edu.cn and Yifeng Chai; yfchai@smmu.edu.cn

Received 16 October 2018; Revised 18 December 2018; Accepted 20 December 2018; Published 10 March 2019

Academic Editor: Wan-Liang Lu

Copyright © 2019 Feng Zhang et al. This is an open access article distributed under the Creative Commons Attribution License, which permits unrestricted use, distribution, and reproduction in any medium, provided the original work is properly cited.

To evaluate the effect of Tanreqing injection on the pharmacokinetics of sirolimus in rats, a high performance liquid chromatography tandem mass spectrometry method was developed for sirolimus assay in whole blood. Calibration curve of sirolimus was acquired over a concentration ranging from 2.5 to 100 ng/mL with $r^2 = 0.9955$. The matrix effects and extraction recoveries of sirolimus ranged from 144% to 152% and from 80% to 96%, respectively. The inter- and intraday relative standard deviations were both <10%. The stability investigation showed that the blood samples were stable for 30-day-storage at -20°C , for 8 h storage at room temperature, for 24 h storage in the auto-sampler at 4°C , and for three freeze-thaw cycle process. The pharmacokinetic results demonstrated that the C_{\max} , AUC, and AUMC of sirolimus in rats (7.5 mg/kg, i.g.) were increased after beincoadministration with Tanreqing Injection at 2.5, 5.0, and 7.5 mL/kg (i.v.), respectively, or at 5 min, 2 h, and 4 h (5.0 mL/kg, i.v.) after SRL dosing, respectively. For the first time, the results proved the herb-drug interaction between Tanreqing Injection and sirolimus and accordingly suggested avoiding concurrent reception of those two drugs for patients.

1. Introduction

For sirolimus (SRL, rapamycin), a common immunosuppressant, its efficacy came from inhibition on the serine/threonine kinase mammalian target (mTOR) by forming a complex with the immunophilin FK-506-binding protein (FKBP)-12 [1]. SRL also exhibits immunosuppressive property by blocking activity of cell cycle progression at the juncture of G1 and S phase and thus suppressing cytokine-mediated T cell proliferation [2]. SRL is metabolized extensively by cytochrome P450 3A (CYP3A) and is a substrate of the drug efflux pump P-glycoprotein. Metabolites contribute to <10% of immunosuppressive activity of the parent compound [3]. As an effective immunosuppressant, SRL has resulted in less nephrotoxicity compared with the calcineurin inhibitors (CNIs), like cyclosporine A (CsA) and tacrolimus (TAC) [4]. However, with narrow therapeutic window (recommended trough concentration range of 5–15 ng/mL), the large intra- and interpatient variability in drug exposure heavily threatened the safety of patients in SRL treatment. What is more, the application of SRL was also limited by its low and variable oral

bioavailability (about 14%) [4]. The routine therapeutic drug monitoring (TDM) of SRL blood concentration is essential for patients, to individualize the drug dose and thereby prevent drug toxicity or organ rejection and subsequent drug discontinuation.

Tanreqing Injection (TRQ), a classical TCM formulation, is produced from five herb raw material: *Scutellariae Radix*, *Fel selenarcti*, *Cornu naemorhedi*, *Lonicerae japonicae Flos*, and *Forsythiae fructus*. In China [5, 6], it is commonly used to treat acute upper respiratory tract infection and early stage of pneumonia in clinical practice. Our previous chemical profile and metabolism profile analyses have revealed that TRQ contains flavones from *Scutellariae Radix* and *Forsythiae fructus*, cholic acids from *Fel selenarcti*, amino acids from *Cornu naemorhedi*, and phenolic acids from *Lonicerae japonicae Flos* as its major constituents, as well as the latest reports in other labtory [7–9].

Lately, the safety of SRL application was concerned in combined drug administration treatment, in which case drug/herb-drug interactions (DDI/HDI) may result in some adverse effects (AEs). For example, an article described

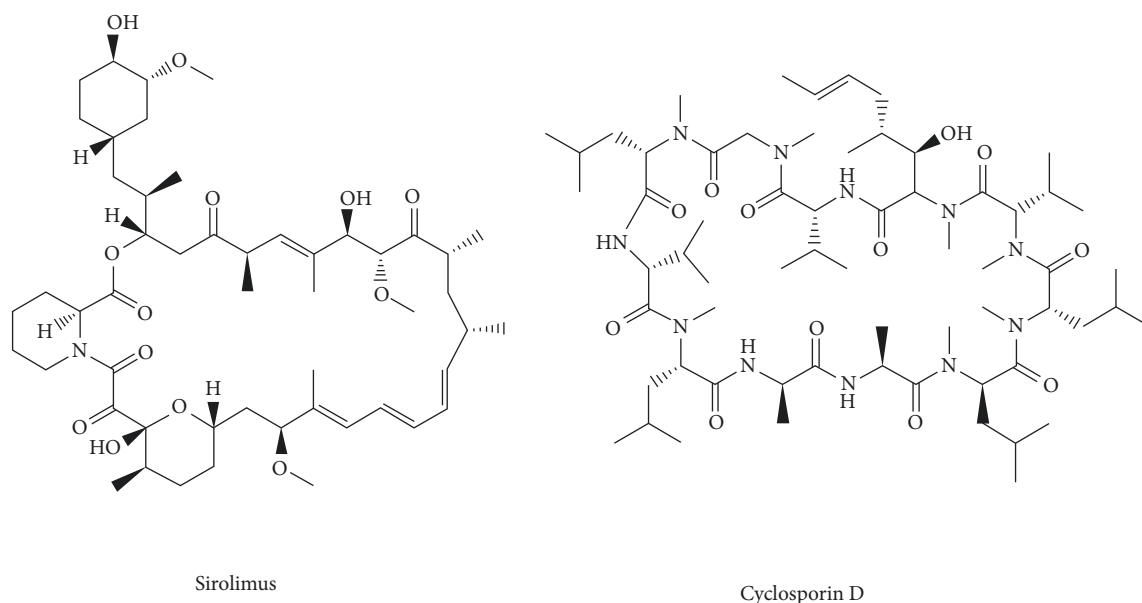


FIGURE 1: Chemical structures of sirolimus and cyclosporin D.

that a drug-drug interaction between azole antifungals or macrolide antibiotics and SRL in five patients led to an increase of SRL exposure [10], while another reported a decrease of SRL exposure in the presence of rifampin and phenytoin concomitantly [11]. In 2011, a sudden rise of SRL level (23.5 ng/mL, 100%) was found in a renal transplantation patient in our hospital, who was treated with SRL (2 mg/day for 10 years) and Cellcept (mycophenolate mofetil, 750 mg twice a day) and then was given TRQ (30 mL/day for two days) for pneumonia. Under excessive exposure of SRL, the patient suffered from thrombocytopenia and leukopenia due to high trough concentration of SRL. No pharmacokinetic DDI was recognized for Cellcept and SRL [12]. Afterwards, with withdrawal of TRQ and constant prescription of SRL and Cellcept, the trough SRL concentration was decreased to 15.4 ng/mL, and the previous side effects for the patient disappeared accordingly. This finding not only emphasized the need for a close TDM of SRL concentrations in transplant patients but also indicated a suspicious HDI between SRL and TRQ.

Immunoassay was reported as a reliable and convenient method for SRL blood concentration detection. However, it was also known that immunoassay might lead to overestimation of SRL concentration as a result of cross-reactivity with metabolites [13]. Therefore, several high performance liquid chromatography coupled to tandem mass spectrometry (LC-MS/MS) methods have been developed for the quantitation of SRL or multiple immunosuppressants concentrations in whole blood, with improved specificity and sensitivity [14–18]

As above mentioned, no literatures were reported about the herb-drug interactions between SRL and TRQ. In order to investigate the potential HDI between SRL and TRQ, a LC-MS/MS method was established to evaluate the effect on the pharmacokinetics of SRL in rats after its co-administration with TRQ (1) on three different doses and (2) at three different times.

2. Materials and Methods

2.1. Chemicals and Reagents. SRL and cyclosporin D (internal standard, IS) (Figure 1) with analytical reference standards (purity $\geq 99.0\%$) were purchased from Sigma-Aldrich Co. (St. Louis, MO, USA). SRL tablets (1 mg per tablet) were obtained from Wyeth Company (USA). TRQ injections (10 mL per vial) were provided from Shanghai Kaibao Pharmaceutical Co., Ltd (China). MS-grade acetonitrile and methanol were purchased from Merck (Darmstadt, Germany). Deionized water was prepared using the Milli-Q system (Millipore, Bedford, MA, USA) and was used for all preparations. Other reagents were of analytical grade.

Stock solutions (1 mg/mL) of SRL and IS were prepared in methanol, respectively. SRL stock solution was diluted in methanol-water (50:50) to obtain a series of working solutions, at concentrations of 25, 50, 100, 200, 400, 500, 800, and 1000 ng/mL. Calibration standards were prepared by dilutions of the above working solutions with appropriate blank rat blood to attain concentrations of 2.5, 5, 10, 20, 40, 50, 80, and 100 ng/mL. QC samples were obtained with concentrations of 5, 40, and 80 ng/mL. All solutions were stored at -20°C .

2.2. LC-MS/MS Condition. Analysis was carried out on an Agilent 1290 series HPLC coupled with an Agilent 6460 triple-quadrupole mass spectrometer that was equipped with jet stream electrospray ionization (ESI). Data acquisition and processing was performed on Agilent 6460 Quantitative Analysis version B.01.02 analyst data processing software (Agilent Corporation, Santa Clara, CA, USA). A Poroshell 120 SB-C18 ($2.7\ \mu\text{m}$, $2.1\ \text{mm} \times 75\ \text{mm}$, I.D. Agilent, USA) was kept at 55°C and a flow rate of $0.5\ \text{mL}/\text{min}$. Mobile phases consisted of methanol with 0.2% formic acid and 10 mM ammonium acetate (A) and 0.2% aqueous formic acid solution with 10 mM ammonium acetate (B). Gradient

elution program was used for analysis: 0–3 min, 60% A; 3–5 min, 60–95% A; 5–8 min, 95% A. Injection volume was set at 10 μ L.

Nitrogen (purity 99.9999%) was applied as the collision gas (0.1 MPa). The detector was operated in the positive mode. The conditions of the source parameters were: capillary voltage 4.0 kV, nebulizer 35 psi, drying gas temperature 225°C, drying gas flow 10 L/min, sheath gas temperature 325°C and sheath gas flow 12 L/min. The optimized multiple reaction monitoring (MRM) conditions of the analytes were m/z 931.6 \rightarrow 864.5 and fragmentation/collision energy 170 V/13 eV for SRL and m/z 1233.9 \rightarrow 1216.9 and fragmentation/collision energy 190 V/17 eV for IS.

2.3. Sample Preparation. 100 μ L blood was added with 200 μ L 0.4 M zinc sulfate aqueous solution: methanol precipitating solution (1:4, v/v, containing IS 200 ng/mL), followed by vortex-mixing (2 min) and centrifugation (12000 rpm, 10 min). The sample supernatant (200 μ L) was obtained and then loaded to LC-MS/MS system for analysis.

2.4. Method Validation. Method validation was performed according to US FDA guidance [19]. Selectivity of the analyte was evaluated by comparing the chromatograms of six different blank rat blood, with those of blood spiked with SRL and IS, as well as those of the rat blood sample after drug administration. Calibration curves were obtained by plotting the peak-area ratio between SRL and IS against the nominal concentrations. Linearity was evaluated by weighted ($1/x^2$) least squares linear regression analysis. The lower limit of quantification (LLOQ) was defined as the lowest SRL concentration with a signal-to-noise ratio of 10:1 and evaluated by analyzing spiked blood samples prepared in six replicates. The intra- and interday precisions and accuracies were obtained by analyzing five replicates of QC samples in three levels. The precision was defined as the relative standard deviation (RSD) and accuracy was expressed as relative error (RE). Matrix effect was determined by comparing the peak areas of SRL and IS spiked in extracted QC samples with those of analytes in standard solutions at equivalent concentrations. Extraction recovery was evaluated by comparing the peak areas of SRL and IS spiked in extracted QC samples with those of un-extracted standard solutions containing the equivalent amount of SRL. Stability evaluation was performed in the following conditions. Long-term stability was tested for the samples that were kept at -20°C for 30 days before analysis. Short-term stability was tested for the samples that were kept at room temperature for 8 h before analysis. Post-preparative stability was tested when the samples were kept in an auto-sampler at 4°C for 24 h before analysis. Freeze and thaw stability was tested for three freeze-thaw cycles when the samples were stored at -20°C for 24 h and thawed at room temperature.

2.5. Application of the Assay and HDI Investigation of SRL and TRQ. All animal protocols were approved by Animal Ethics Committee of Second Military Medical University. Sprague-Dawley rats (adult male, 200 ± 20 g) were obtained

from Shanghai SLAC laboratory animal Co. Ltd. (Shanghai, China). Rats were quarantined for one week prior to study, and were housed in well ventilated cages at $20 \pm 1^\circ\text{C}$ and $50 \pm 10\%$ air humidity while on a 12-h light-dark cycle. All rats were fasted with free access to water for 12 h before experiment.

In order to investigate the effect of different dose levels and dosing time of TRQ on the pharmacokinetics of SRL analysis, SD rats were divided into 6 groups of 6 animals each: control group-SRL (7.5 mg/kg, i.g.) alone, group A1-coadministration of SRL (7.5 mg/kg, i.g.) with TRQ (2.5 mL/kg, i.v.), group A2-co-administration of SRL (7.5 mg/kg, i.g.) with TRQ (5 mL/kg, i.v.), and group A3-co-administration of SRL (7.5 mg/kg, i.g.) with TRQ (10 mL/kg, i.v.). TRQ were given to all rats at 5 min after SRL dosing in groups A1–A3.

In order to investigate the effect of different dosing time of TRQ on the pharmacokinetics of SRL analysis, SD rats were divided into 4 groups of 6 animals each: control group-SRL (7.5 mg/kg, i.g.) alone, and the rest rats in groups B1–B3 were treated with SRL (7.5 mg/kg, i.g.) and TRQ (5 mL/kg, i.v.). TRQ were given to rats at 5 min, 2 h and 4 h after SRL dosing in groups B1–B3, respectively. See the experimental protocol in supplementary Figure S1.

Blood samples (0.5 mL) were collected into heparinized tubes via retro-orbital plexus at pre-dose (0), 20, 40 min, 1, 2, 4, 6, 8, 12, 24, 36, and 48 h post-dose. Blood samples were stored at -20°C prior to analysis. Pharmacokinetic parameters (including C_{\max} , T_{\max} , $t_{1/2}$, AUC , $AUMC$, and MRT) were calculated on Drug and Statistics DAS 3.2.6 (Mathematical Pharmacology Professional Committee of China, Shanghai, China), using noncompartmental pharmacokinetic analysis. The differences between groups were evaluated by Student's *t* test and were considered to be significant at $*P < 0.05$ and $**P < 0.01$.

3. Results and Discussion

3.1. Method Development. Cyclosporine D was served as IS as the previous report [15]. As MRM mode in LC-MS/MS detection allowed simultaneous quantitative determination of drugs with high specificity, low detection limits, and short time of analysis [19], it was applied to the analysis of SRL and IS. In order to release SRL from the erythrocytes where SRL was predominantly distributed (about 95%), zinc sulphate was used to lyse the erythrocytes. It was thought that the further sample treatment like solid-phase extraction or liquid-liquid extraction would contribute to eliminate the phospholipids from blood, and then increase the efficiency of SRL recovery [18, 19]. However, that step would be time- and cost-consuming, hard to be applied in the high-throughput TDM. Therefore, a one-step PPT protocol, in conjunction with a proper LC method, was optimized to eliminate the phospholipids in the initial 3 min. The addition of 0.2% formic acid and 10 mM ammonium acetate in phases A and B was favorable to enhance the MS response for both SRL and IS. After checking different gradients in mobile phases and other conditions, the best results were obtained with the conditions described in “**LC-MS/MS condition**”.

TABLE 1: Pharmacokinetic parameters of SRL after the administration of TRQ at different doses.

| Parameter | Control Group | Group A1 | Group A2 | Group A3 |
|--|------------------|---------------------|--------------------|--------------------|
| T_{max} (h) | 4.167±2.563 | 6.500±2.811 | 5.167±3.251 | 6.333±2.658 |
| C_{max} (ng/mL) | 9.487±1.479 | 15.546±4.234** | 12.201±1.153** | 16.043±1.437** |
| $t_{1/2}$ (h) | 68.144±63.013 | 57.543±46.635 | 47.119±43.595 | 118.158±186.146 |
| $AUC_{0 \rightarrow t}$ (ng·h/mL) | 219.673±32.306 | 349.346±69.514** | 305.875±31.417** | 421.518±42.166** |
| $AUC_{0 \rightarrow \infty}$ (ng·h/mL) | 493.458±271.184 | 684.035±233.463 | 588.668±339.317 | 1456.282±1708.762 |
| $AUMC_{0 \rightarrow t}$ (ng·h/mL) | 4122.178±593.331 | 6577.191±1205.275** | 5935.337±819.676** | 8394.303±820.509** |
| $MRT_{0 \rightarrow t}$ (h) | 18.772±0.456 | 18.881±0.946 | 19.343±0.976 | 19.919±0.275** |

** $P < 0.01$, compared with control group.

3.2. Method Validation. Calibration curve of SRL ($y=0.0024x-0.0026$) exhibited effective linearity ($R^2=0.9955$) over a range of 2.5–100 ng/mL, with LLOQ of 2.5 ng/mL. In detail, inter- and intraday precisions and accuracies for SRL had RSD values less than 10%. The extraction recovery was between 80% and 96%. The matrix effect of SRL was between 144% and 152%. Stability investigation showed that the RE values for SRL were less than 15% in rat blood for 30-day-storage at -20°C , below 8% for 8-h-storage at room temperature, less than 10% for 24-h-storage in the auto-sampler at 4°C , and below 20% for three freeze-thaw cycle process, which indicated that the blood samples were stable during the entire experiment. All the above results were within the ranges requested by the FDA for bioanalytical method validation and could be applied to the SRL pharmacokinetic study in rat.

3.3. Results of Pharmacokinetic Study and HDI Investigation.

To evaluate the effect of different dose levels of TRQ on the pharmacokinetics of SRL, SRL pharmacokinetic data of control group and group A1–A3 were demonstrated in Table 1. The corresponding mean blood concentration-time profiles were showed in Figure 2. Several pharmacokinetic parameters presented an obvious increase trend in groups A1–A3 when compared with those in control group, and C_{max} , $AUC_{0 \rightarrow t}$ and $AUMC$ showed significant difference. Compared with that of control group (9.487 ± 1.479 ng/ml), the C_{max} of A1, A2, and A3 groups were significantly increased by 64% (15.546 ± 4.234 ng/ml, $p < 0.01$), 28% (12.201 ± 1.153 ng/ml, $p < 0.01$), and 70% (16.043 ± 1.437 ng/ml, $p < 0.01$), respectively. In parallel, the $AUC_{0 \rightarrow t}$ of A1, A2, and A3 groups were significantly increased by 59% (349.346 ± 69.514 ng·h/mL, $p < 0.01$), 39% (305.875 ± 31.417 ng·h/mL, $p < 0.01$), and 92% (421.518 ± 42.166 ng·h/mL, $p < 0.01$), respectively, when compared to control group (219.673 ± 32.306 ng·h/mL). As for $AUMC$, it was significantly increased by 60% (6577.191 ± 1205.275 ng·h/mL, $p < 0.01$), 44% (5935.337 ± 819.676 ng·h/mL, $p < 0.01$), and 104% (8394.303 ± 820.509 ng·h/mL, $p < 0.01$), respectively, when compared to control group (4122.178 ± 593.331 ng·h/mL). It revealed that coadministration of SRL with single-dose TRQ could markedly increase the blood concentration of SRL. In the lowest dose of TRQ group (2.5 mL/kg), the three parameters of SRL mentioned above were increased by approximately

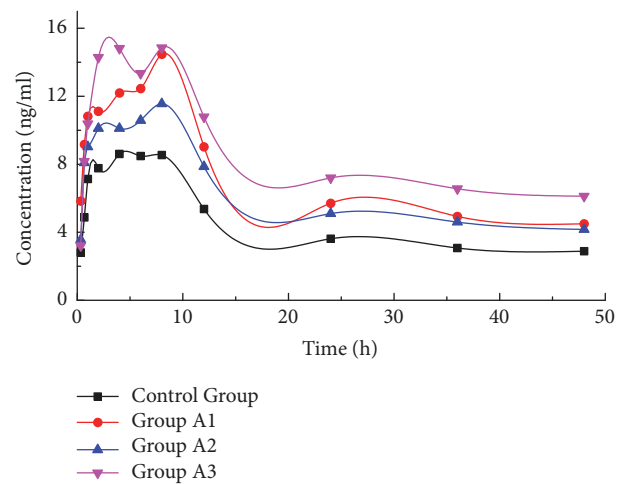


FIGURE 2: Mean blood concentration-time profiles of sirolimus after the administration of TRQ at different doses.

1-fold, suggesting that the HDI might appear even with lowest dose of TRQ coadministration. However, no change in T_{max} was observed with or without TRQ coadministration. Also, values of $t_{1/2}$ and MRT were similar with or without TRQ co-administration. The above observations suggested a potential HDI between SRL and TRQ.

To evaluate the effect of different dosing time of TRQ on the pharmacokinetics of SRL, SRL pharmacokinetic data of control group and groups B1–B3 were listed in Table 2. The relevant mean blood concentration-time profiles were shown in Figure 3. Among those parameters, only $AUC_{0 \rightarrow t}$ showed significant difference ($P < 0.01$) in groups B1–B3 when compared with those in control group, and $AUC_{0 \rightarrow t}$ in group B3 was smaller than that in groups B1 and B2. T_{max} and $AUMC$ presented in a similar trend with $AUC_{0 \rightarrow t}$ (without significance). In detail, compared with that of control group (219.673 ± 32.306 ng·h/mL), the $AUC_{0 \rightarrow t}$ of B1, B2, and B3 groups were significantly increased by 39% (305.875 ± 31.417 ng·h/mL, $p < 0.01$), 37% (301.677 ± 73.315 ng·h/mL, $p < 0.01$), and 35% (296.211 ± 65.286 ng·h/mL, $p < 0.01$), respectively. As for $AUMC$, it was significantly increased by 44% (5935.337 ± 819.676 ng·h/mL, $p < 0.01$), 49% (6157.161 ± 1329.936 ng·h/mL, $p < 0.01$), and 37% (5635.173 ± 1350.868 ng·h/mL, $p < 0.01$), respectively, when compared to control group (4122.178 ± 593.331 ng·h/mL).

TABLE 2: Pharmacokinetic parameters of SRL after the administration of TRQ at different time.

| Parameter | Control Group | Group B1 | Group B2 | Group B3 |
|--|------------------|--------------------|---------------------|---------------------|
| T_{max} (h) | 4.167±2.563 | 5.167±3.251 | 5.001±4.472 | 3.001±2.449 |
| C_{max} (ng/mL) | 9.487±1.479 | 12.201±1.153** | 11.643±3.648 | 12.699±3.479 |
| $t_{1/2}$ (h) | 68.144±63.013 | 47.119±43.595 | 65.408±27.871 | 33.299±14.359 |
| $AUC_{0 \rightarrow t}$ (ng·h/mL) | 219.673±32.306 | 305.875±31.417** | 301.677±73.315** | 296.211±65.286** |
| $AUC_{0 \rightarrow \infty}$ (ng·h/mL) | 493.458±271.184 | 588.668±339.317 | 694.003±91.568 | 456.371±133.544 |
| $AUMC_{0 \rightarrow t}$ (ng·h ² /mL) | 4122.178±593.331 | 5935.337±819.676** | 6157.161±1329.936** | 5635.173±1350.868** |
| $MRT_{0 \rightarrow t}$ (h) | 18.772±0.456 | 19.343±0.976 | 20.527±0.801** | 18.962±0.716 |

**P<0.01, compared with control group.

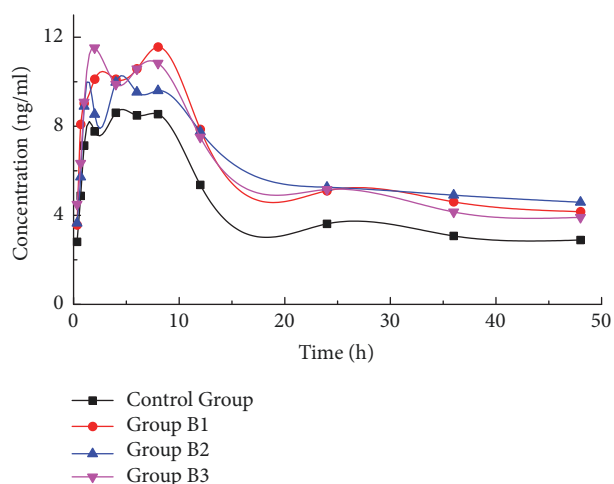


FIGURE 3: Mean blood concentration-time profiles of sirolimus after the administration of TRQ at different time.

Therefore, it could be concluded that the TRQ significantly enhanced the AUC of SRL when TRQ was administrated at the same time with SRL or 2 hours after SRL administration. This effect was not obvious when TRQ was administrated 4 hours after SRL administration. Besides, the pharmacokinetic profiles of SRL also showed the similar curves in the groups B1–B3. Based on the effect of different dose levels and different dosing time of TRQ, it could be found that the AUC s in groups A1–A3 and groups B1–B3 were higher than those in control groups, which indicated that TRQ might cause overexposure of SRL in patients receiving SRL along with TRQ.

SRL is a substrate for CYP3A and P-gp. It is not sure that the five TCMs from TRQ or its main components inhibit the hepatic and intestinal CYP3A/P-gp system. However, it has been reported by some literatures that baicalin, a main component from *Scutellariae Radix* in TRQ, could inhibit hepatic CYP3A activity as well as P-glycoprotein efflux pump in the small intestine [20–22]. Therefore, the affected SRL pharmacokinetics by TRQ might be mainly due to the inhibition of CYP3A-mediated metabolism and P-gp-mediated transport by baicalin. The complex mixture of chemical constituents in herbal medicines or TCMs, which

are usually believed to be medically efficacious, are yet to be fully characterized [23]. There might be other compounds responsible for the HDI mechanism. In future, further studies will be needed to clarify this point.

Actually, like the pharmacokinetic profile of the mean value of SRL in the stable renal transplant patients [24], the control group of SRL did not show the obvious double peaks, which were only found in the SRL-TRQ combination treatment groups. Because of the extensive distribution in red blood cells of SRL (94.5%) [24], zinc sulfate was applied as the erythrolysis agent to release SRL in the circulating red blood cells. In this study, the absorption of SRL fluctuated. The reason could be that the absorption rate of SRL varied in different parts of the intestine in rats [25]. Thus, the double peaks for SRL in the TRQ pretreatment groups might be attributed to the effect of chemical compounds from TRQ on the elimination of SRL, which should be investigated in our future study.

It was reported that SRL pharmacokinetics was associated with CYP3A and MDR1 genetic polymorphisms, but we failed to determine the relevant genetic information of the patient in the introduction. If the patient expressed the CYP3A5 enzyme (CYP3A5*1 carriers), he might need more SRL to reach target concentrations when compared with those with CYP3A5*3/*3 carriers [26]. It might lead to a risk of drug toxicity, especially when a potential HDI existed.

4. Conclusions

A simple and accurate LC-MS/MS method was developed and validated for SRL assay in rat blood following a quick PPT procedure, which demonstrated good selectivity, linearity, precision and accuracy, matrix effect and recovery, and stability. This assay was successfully applied to evaluate the pharmacokinetics of SRL, when it was administrated alone and coadministrated with TRQ in rat. The results showed that different dose levels and different dosing time of TRQ would increase SRL blood concentration and exposure, indicating a potential HDI between TRQ and SRL. The study provided valuable information for SRL treatment: from the pharmacokinetic point of view, coadministration with TRQ or baicalin-derived products was not recommended in clinic. A systematical TDM for SRL was greatly encouraged for safety and would help to discover a possible DDI/HDI.

Data Availability

The data used to support the findings of this study are available from the corresponding author upon request.

Conflicts of Interest

The authors declare that they have no conflicts of interest.

Authors' Contributions

Feng Zhang and Liang Sun contributed equally to this work. Wansheng Chen and Yifeng Chai contributed equally to this work.

Acknowledgments

Funding for this study was provided by National Natural Science Foundation of China (81830109 and 81573793), Shanghai Key Specialty Project of Clinical Pharmacy (2016-40044-002), Important Weak Subject Construction Project of Shanghai Health Science Education (2016ZB0303), and Beijing Medical Award Foundation (YJHYXKYJJ-122). The authors also greatly appreciate the kind help from Dr. Jun Wen, School of Pharmacy, Second Military Medical University.

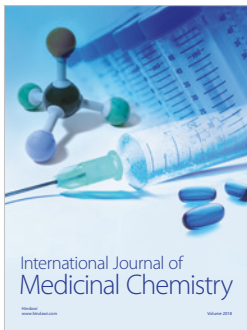
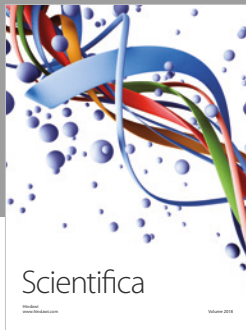
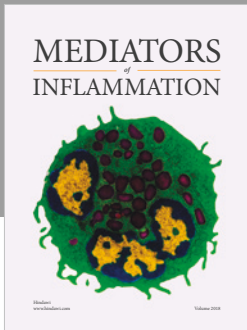
Supplementary Materials

Please find the experimental protocol in supplementary Figure S1. (*Supplementary Materials*)

References

- [1] S. N. Sehgal, "Rapamune® (RAPA, rapamycin, sirolimus): Mechanism of action immunosuppressive effect results from blockade of signal transduction and inhibition of cell cycle progression," *Clinical Biochemistry*, vol. 31, no. 5, pp. 335–340, 1998.
- [2] N. Terada, J. J. Lucas, A. Szepesi, R. A. Franklin, J. Domenico, and E. W. Gelfand, "Rapamycin blocks cell cycle progression of activated T cells prior to events characteristic of the middle to late G1 phase of the cycle," *Journal of Cellular Physiology*, vol. 154, no. 1, pp. 7–15, 1993.
- [3] P. R. Shah, V. B. Kute, H. V. Patel, and H. L. Trivedi, "Therapeutic drug monitoring of sirolimus," *Clinical Queries: Nephrology*, vol. 4, no. 3-4, pp. 44–49, 2015.
- [4] F. Shihab, U. Christians, L. Smith, J. R. Wellen, and B. Kaplan, "Focus on mTOR inhibitors and tacrolimus in renal transplantation: Pharmacokinetics, exposure-response relationships, and clinical outcomes," *Transplant Immunology*, vol. 31, no. 1, pp. 22–32, 2014.
- [5] Y. Wang, T. Wang, J. Hu et al., "Anti-biofilm activity of TanRe-Qing, a traditional Chinese Medicine used for the treatment of acute pneumonia," *Journal of Ethnopharmacology*, vol. 134, no. 1, pp. 165–170, 2011.
- [6] P. Wang, X. Liao, Y. M. Xie, Y. Chai, and L. H. Li, "Tanreqing injection for acute bronchitis disease: A systematic review and meta-analysis of randomized controlled trials," *Complement Ther Med*, vol. 25, pp. 143–158, 2016.
- [7] L. Sun, H. Wei, F. Zhang et al., "Qualitative analysis and quality control of Traditional Chinese Medicine preparation Tanreqing injection by LC-TOF/MS and HPLC-DAD-ELSD," *Analytical Methods*, vol. 5, no. 22, pp. 6431–6440, 2013.
- [8] F. Zhang, L. Sun, S. H. Gao, W. S. Chen, and Y. F. Chai, "LC-MS/MS analysis and pharmacokinetic study on five bioactive constituents of Tanreqing injection in rats," *Chinese Journal of Nature Medicines*, vol. 14, pp. 769–775, 2016.
- [9] F. Zhang, L. Sun, S. H. Gao et al., "A sensitive HPLC-MS method for simultaneous determination of thirteen components in rat plasma and its application to pharmacokinetic study of Tanreqing injection," *Journal of Pharmaceutical and Biomedical Analysis*, vol. 148, pp. 205–213, 2018.
- [10] B. Sádaba, M. A. Campanero, E. G. Quetglas, and J. R. Azanza, "Clinical relevance of sirolimus drug interactions in transplant patients," *Transplantation Proceedings*, vol. 36, no. 10, pp. 3226–3228, 2004.
- [11] M. Oellerich, V. W. Armstrong, F. Streit, L. Weber, and B. Tönshoff, "Immunosuppressive drug monitoring of sirolimus and cyclosporine in pediatric patients," *Clinical Biochemistry*, vol. 37, no. 6, pp. 424–428, 2004.
- [12] T. Van Gelder, "Drug interactions with tacrolimus," *Drug Safety*, vol. 25, no. 10, pp. 707–712, 2002.
- [13] B. C. Sallustio, B. D. Noll, and R. G. Morris, "Comparison of blood sirolimus, tacrolimus and everolimus concentrations measured by LC-MS/MS, HPLC-UV and immunoassay methods," *Clinical Biochemistry*, vol. 44, no. 2-3, pp. 231–236, 2011.
- [14] N. Ansermot, M. Fathi, J.-L. Veuthey, J. Desmeules, S. Rudaz, and D. Hochstrasser, "Simultaneous quantification of cyclosporine, tacrolimus, sirolimus and everolimus in whole blood by liquid chromatography-electrospray mass spectrometry," *Clinical Biochemistry*, vol. 41, no. 9, pp. 728–735, 2008.
- [15] J.-H. Lee, K.-H. Cha, W. Cho et al., "Quantitative determination of sirolimus in dog blood using liquid chromatography-tandem mass spectrometry, and its applications to pharmacokinetic studies," *Journal of Pharmaceutical and Biomedical Analysis*, vol. 53, no. 4, pp. 1042–1047, 2010.
- [16] D. M. Mueller and K. M. Rentsch, "Sensitive quantification of sirolimus and everolimus by LC-MS/MS with online sample cleanup," *Journal of Chromatography B*, vol. 878, no. 13-14, pp. 1007–1012, 2010.
- [17] N. Mano, M. Sato, M. Nozawa et al., "An accurate quantitative LC/ESI-MS/MS method for sirolimus in human whole blood," *Journal of Chromatography B*, vol. 879, no. 13-14, pp. 987–992, 2011.
- [18] A. Navarrete, M. P. Martínez-Alcázar, I. Durán et al., "Simultaneous online SPE-HPLC-MS/MS analysis of docetaxel, Temsirolimus and sirolimus in whole blood and human plasma," *Journal of Chromatography B*, vol. 921-922, pp. 35–42, 2013.
- [19] Guidance for Industry, Bioanalytical Method Validation, US Department of Health and Human Services Food and Drug Administration, Center for Drug Evaluation and Research (CDER), Center for Veterinary Medicine (CV), May 2001.
- [20] X. Tian, Z.-Y. Cheng, J. He, L.-J. Jia, and H.-L. Qiao, "Concentration-dependent inhibitory effects of baicalin on the metabolism of dextromethorphan, a dual probe of CYP2D and CYP3A, in rats," *Chemico-Biological Interactions*, vol. 203, no. 2, pp. 522–529, 2013.
- [21] Z. Y. Cheng, X. Tian, J. Gao, L. I. HM, L. J. Jia, and H. L. Qiao, "Contribution of baicalin on the plasma protein binding displacement and CYP3A activity inhibition to the

- pharmacokinetic changes of nifedipine in rats in vivo and in vitro,” *PLoS One*, vol. 9, article e87234, 2014.
- [22] Y.-A. Cho, J.-S. Choi, and J.-P. Burm, “Effects of the antioxidant baicalein on the pharmacokinetics of nimodipine in rats: A possible role of P-glycoprotein and CYP3A4 inhibition by baicalein,” *Pharmacological Reports*, vol. 63, no. 4, pp. 1066–1073, 2011.
- [23] E. F. Oga, S. Sekine, Y. Shitara, and T. Horie, “Pharmacokinetic Herb-Drug Interactions: Insight into Mechanisms and Consequences,” *European Journal of Drug Metabolism and Pharmacokinetics*, vol. 41, no. 2, pp. 93–108, 2016.
- [24] K. Mahalati and B. D. Kahan, “Clinical pharmacokinetics of sirolimus,” *Clinical Pharmacokinetics*, vol. 40, no. 8, pp. 573–585, 2001.
- [25] J. Wang, H. T. Song, X. Zhou, and Q. Zhang, “In Situ intestinal absorption of Sirolimus in rats,” *China Pharmacy*, vol. 20, pp. 27–30, 2009.
- [26] D. Anglicheau, D. Le Corre, S. Lechaton et al., “Consequences of genetic polymorphisms for sirolimus requirements after renal transplant in patients on primary sirolimus therapy,” *American Journal of Transplantation*, vol. 5, no. 3, pp. 595–603, 2005.



Hindawi

Submit your manuscripts at
www.hindawi.com

