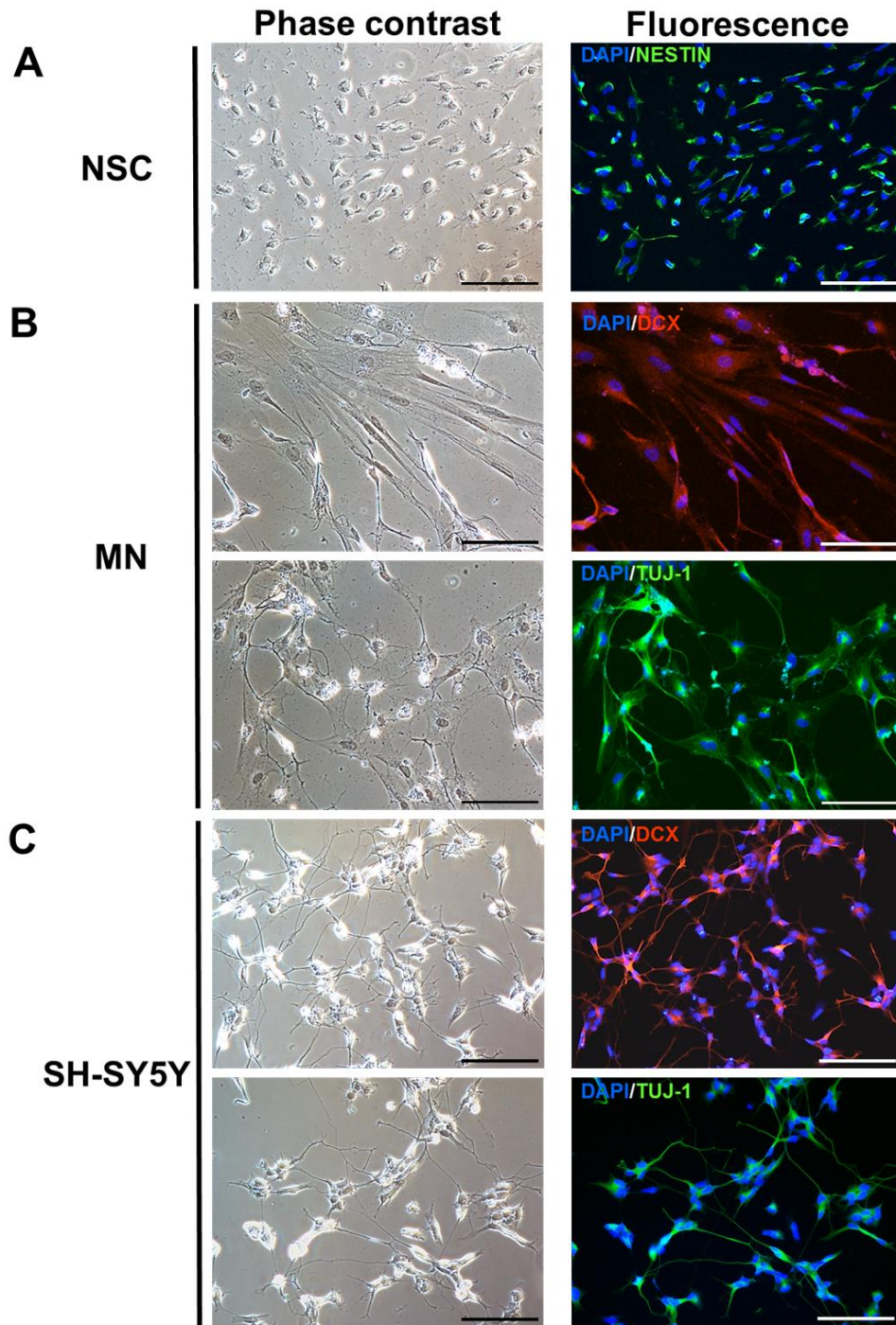


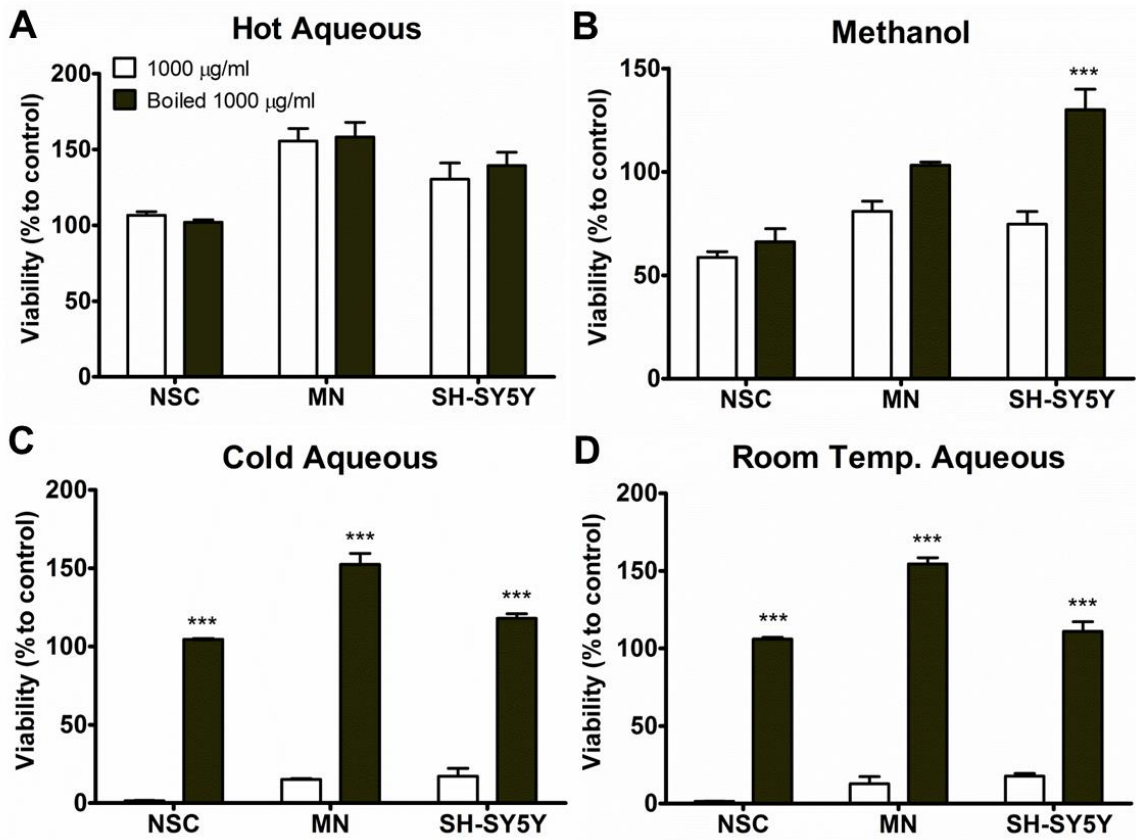
Supplementary Figures



2

3 **Figure S1:** Characterization and fluorescence microscopy of the *in vitro* models. (A) NSCs
 4 expressing Nestin exhibited green fluorescence. (B) MNs and (C) differentiated SH-SY5Y cells
 5 expressing doublecortin (DCX) and β 3-tubulin (TUJ-1) were stained in red and green,
 6 respectively. Nuclei were counter-stained with DAPI (blue). Scale bar: 100 μ m.

1



2

3

4 **Figure S2:** Effects of boiled *L. rhinocerus* (A) HA, (B) ME, (C) CA and (D) RT extracts on the
5 cell viability of NSCs, MNs and differentiated SH-SY5Y cells after 24 h of treatment. Results
6 are expressed as mean \pm SEM (n = 3). Asterisks denote significant differences between the
7 original extract and boiled extract at 1000 µg/ml; *** $P < 0.001$.

8

9