

Supplementary Materials



Figure S1: Casein hydrolysis zone of *P. aeruginosa* strain RBS on LB supplemented with casein (1%).

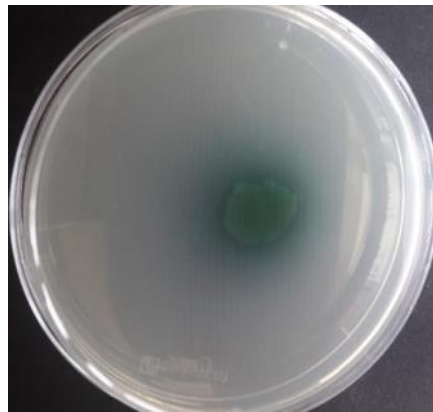


Figure S2: Pyocyanin production by *P. aeruginosa* RBS on Pseudomonas (ce n'est pas le nom d'une bactérie mais d'un produit, pas en italique) Agar P medium. The green pigment is attributed to pyocyanin production.

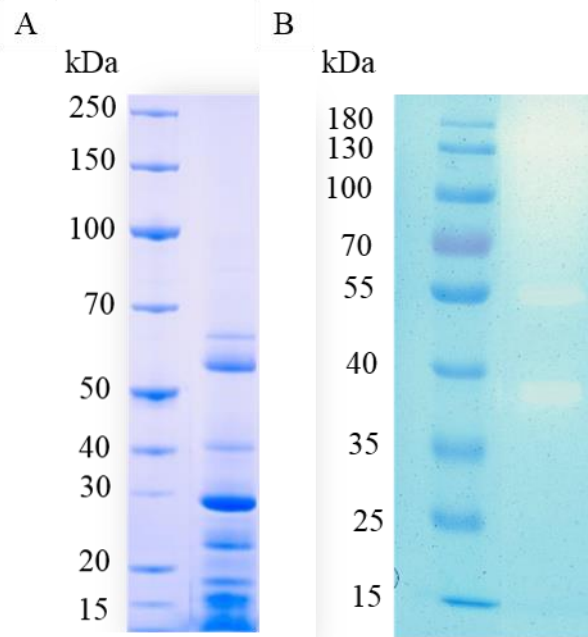


Figure S3 (A) SDS-PAGE analysis of a crude extract from *P. aeruginosa* strain RBS. Lane 1, PageRuler Broad-Range Protein Ladder (15 to 250 kDa). Lane 2, crude extract after ammonium sulfate fractionation. (B) Zymogram of a crude extract from *P. aeruginosa* strain RBS. Lane 1, PageRuler Prestained Protein Ladder (15 to 180 kDa). Lane 2, zymogram of the crude extract after ammonium sulfate fractionation.

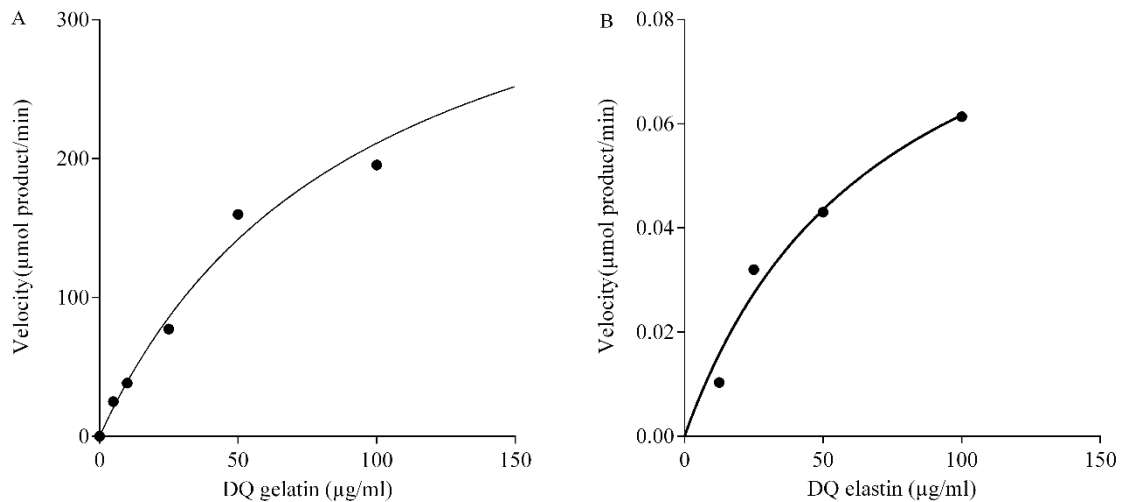


Figure S4: Initial velocity as a function of (A) DQ Gelatin and (B) DQ Elastin concentration ($\mu\text{g/mL}$). Activity assays were performed with $100 \mu\text{g/mL}$ of LasB. Prism 6 (GraphPad Software, Inc) was used to fit the data with the corresponding Michaelis-Menten curve and to calculate the V_{max} and K_{m} value.