



4Y67: CHAIN A

The diagram shows a protein structure with a highlighted chain (Chain A) in yellow. A scale bar at the bottom left indicates a length of 0.3. The chain is connected to a vertical line of five green spheres, which are labeled with the text 'Chain A, Ubiquitin Carboxyl-terminal Hydrolase 21 ...'.

Chain A, Ubiquitin Carboxyl-terminal Hydrolase 21 ...

Chain A, Ubiquitin Carboxyl-terminal Hydrolase 21 ...

Chain A, Ubiquitin Carboxyl-terminal Hydrolase 21 ...



1P9B: CHAIN A



Chain A, ADENYLOSUCCINATE SYNTHETASE I...

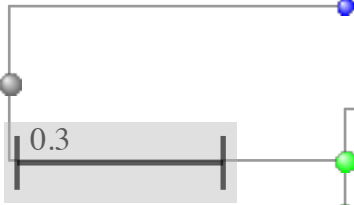


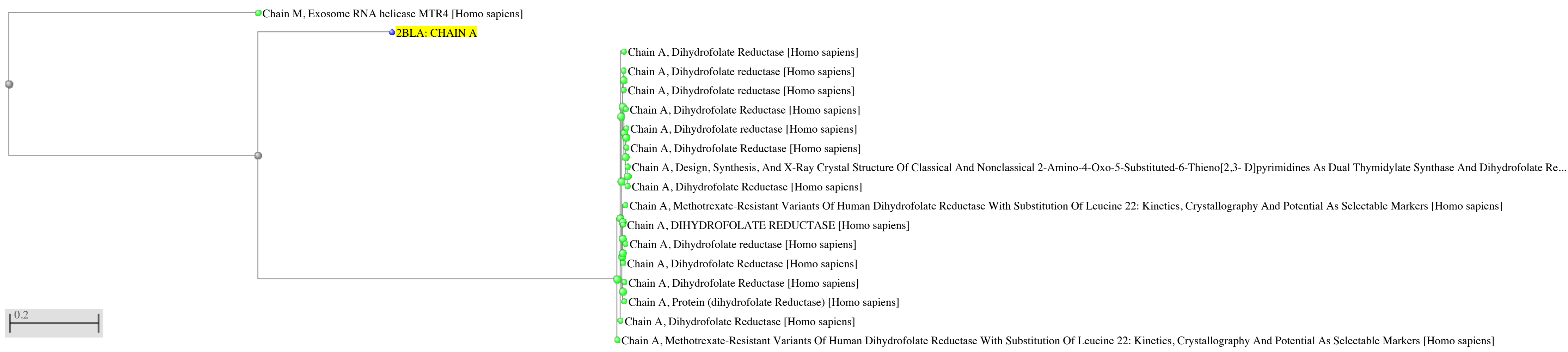
0.2

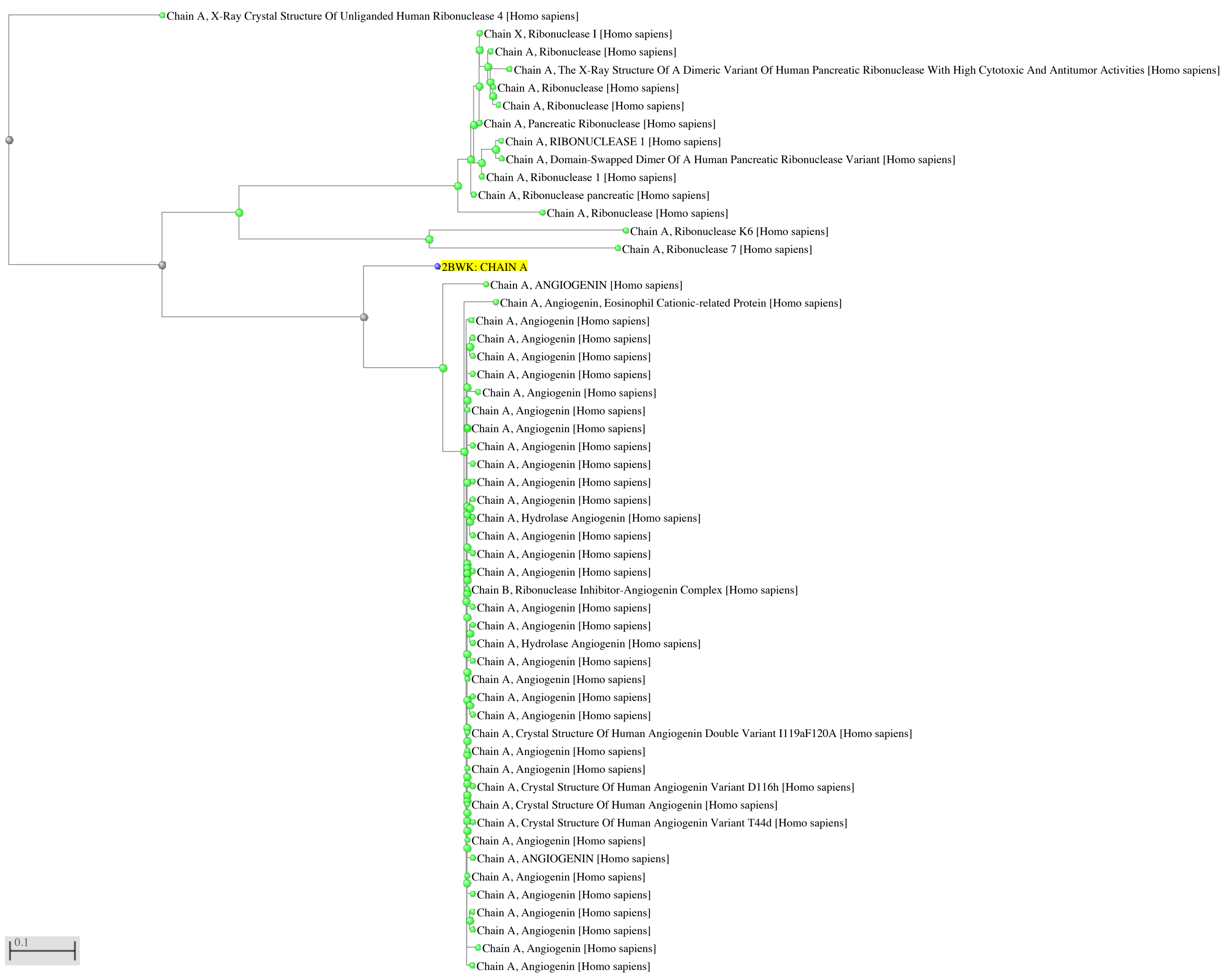
1VYQ: CHAIN A

Chain A, Dutp Pyrophosphatase [Homo sapiens]



Chain A, Deoxyuridine 5'-triphosphate Nucleotidohydrolase [H...








 2W41: CHAIN A

 0.3  Chain A, Angiopoietin-1 Receptor [Homo...

 Chain A, Tek Tyrosine Kinase Variant [H...

3AU9: CHAIN A

Chain A, Ubiquitin Carboxyl-terminal Hydrolase 21 ...

Chain A, Ubiquitin Carboxyl-terminal Hydrolase 21 ...

Chain A, Ubiquitin Carboxyl-terminal Hydrolase 21 ...

0.3





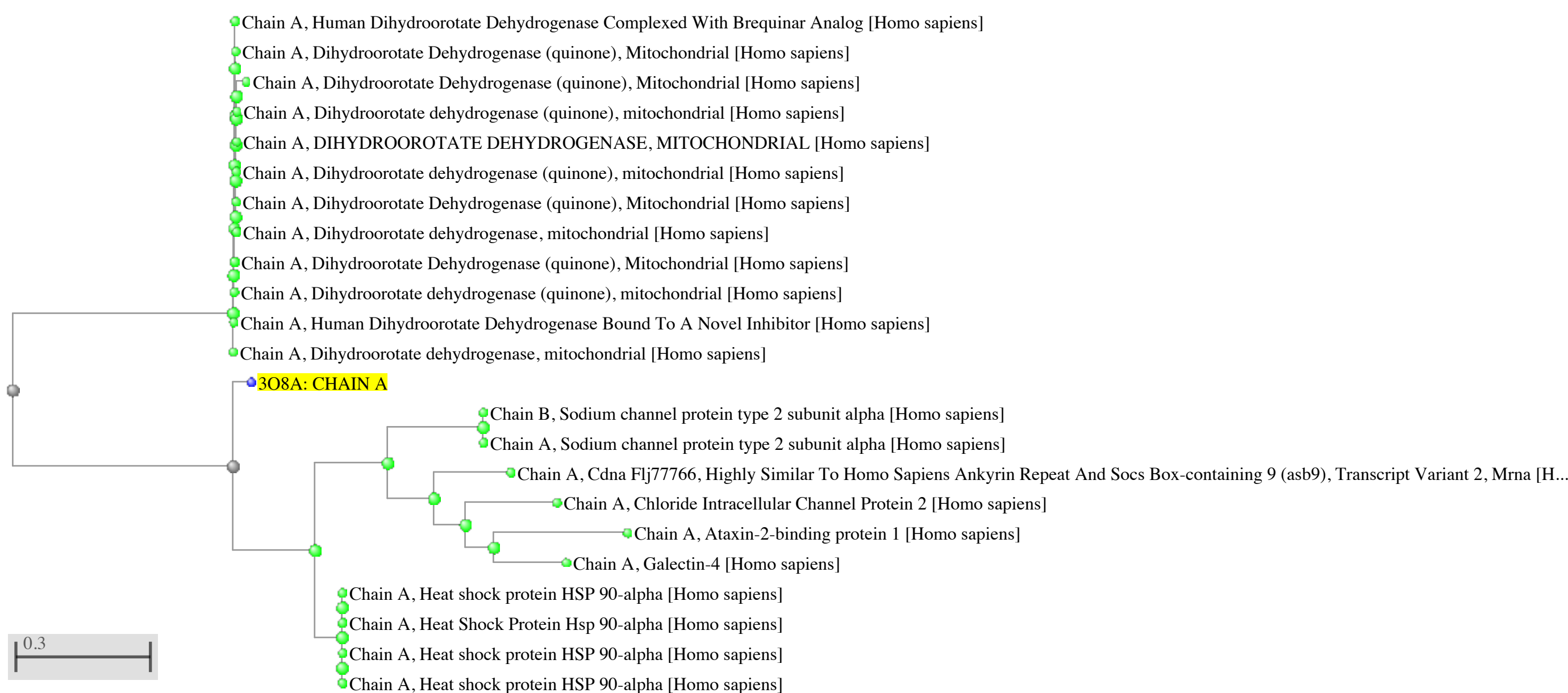
3LT0: CHAIN A

Chain A, Ubiquitin carboxyl-terminal hydrolase 46 [H..

Chain A, Ubiquitin Carboxyl-terminal Hydrolase 46 ...

Chain A, Ubiquitin Carboxyl-terminal Hydrolase 46 ...

0.3





Chain A, Phosphoglucose Isomerase [Homo sapiens]

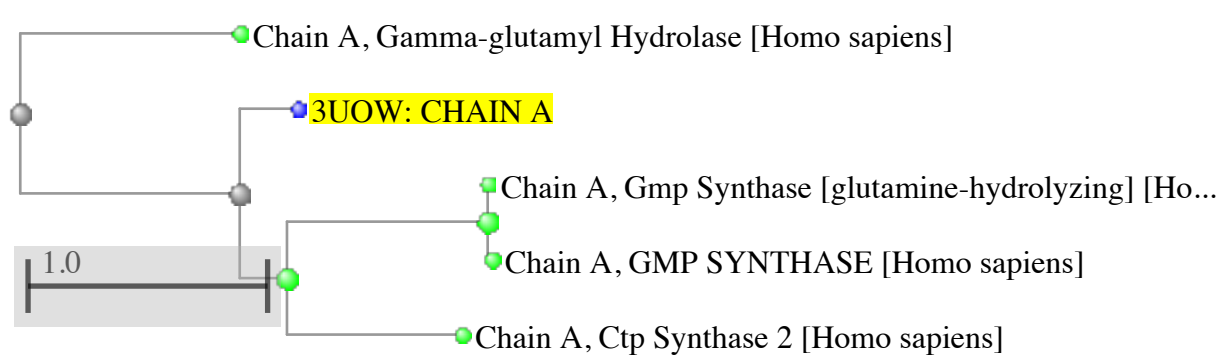
Chain A, Autocrine Motility Factor [Homo sapiens]

Chain A, Phosphoglucose Isomerase [Homo sapiens]

3PR3: CHAIN A

Chain A, Histone-lysine N-methyltransferase SETD2 ...

Chain A, Histone-lysine N-methyltransferase Setd2 [H..



4FGZ: CHAIN A

0.3

Chain A, Rho-associated Protein Kinase 1

