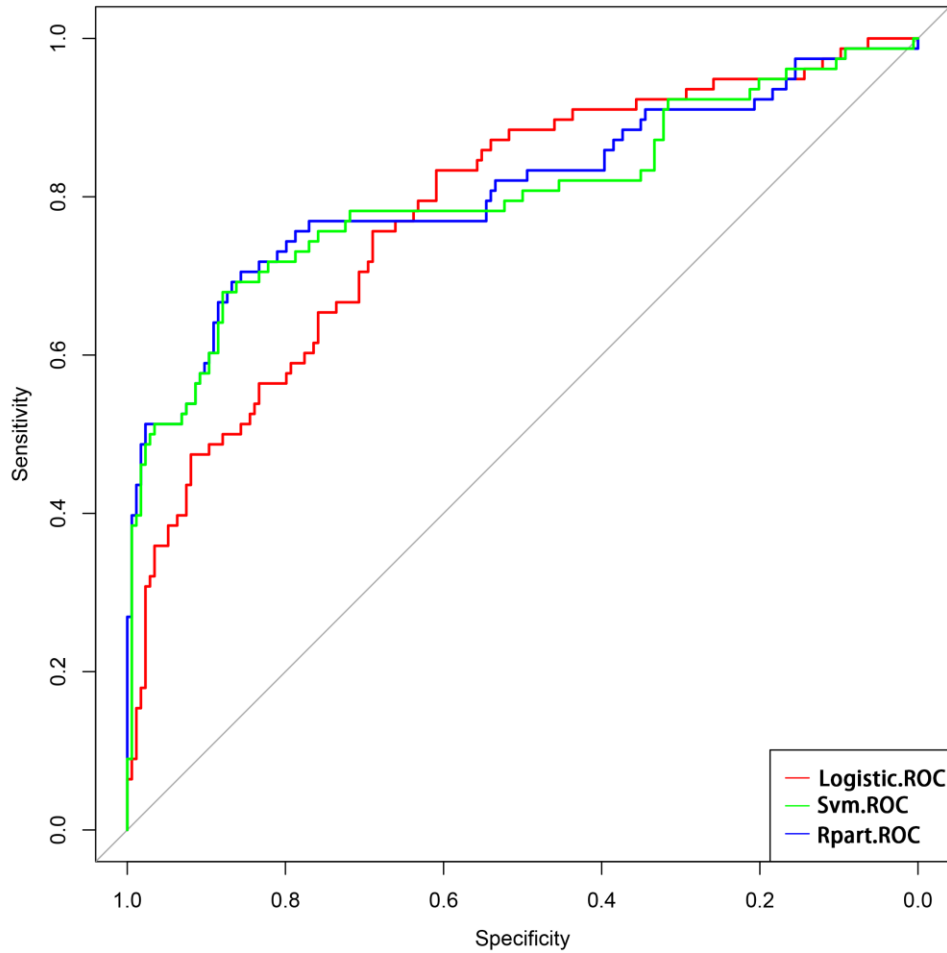
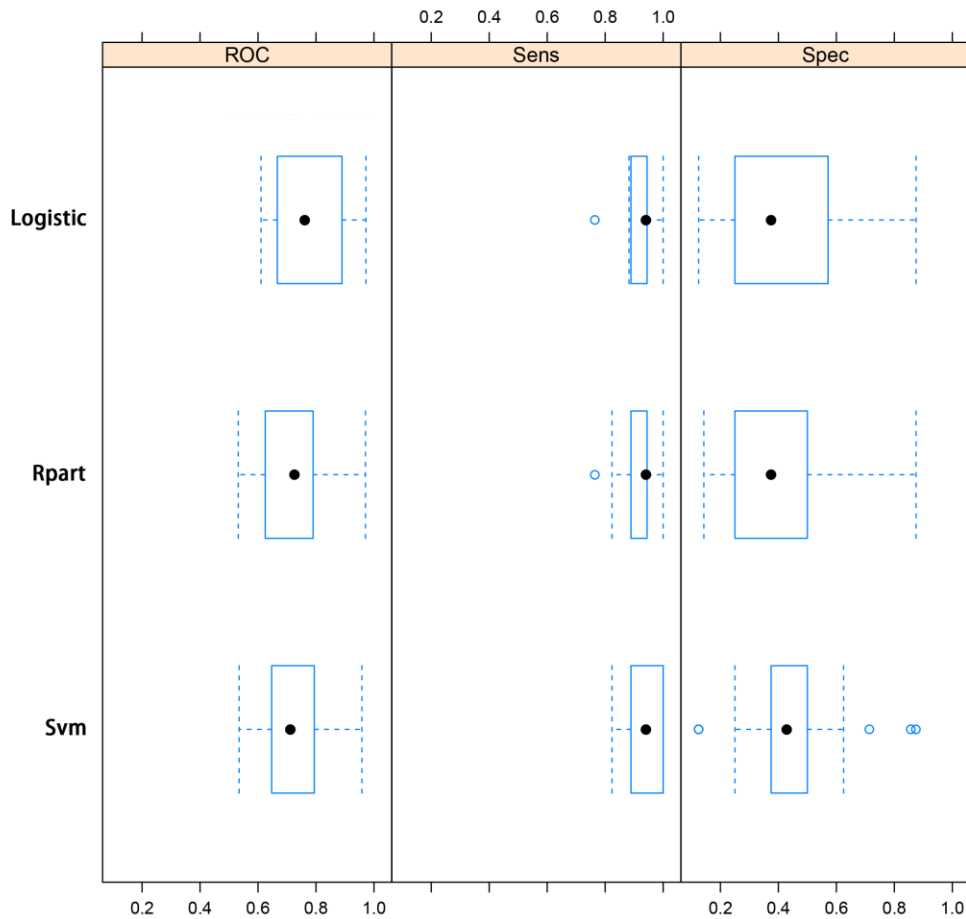


**Supplementary Material:**



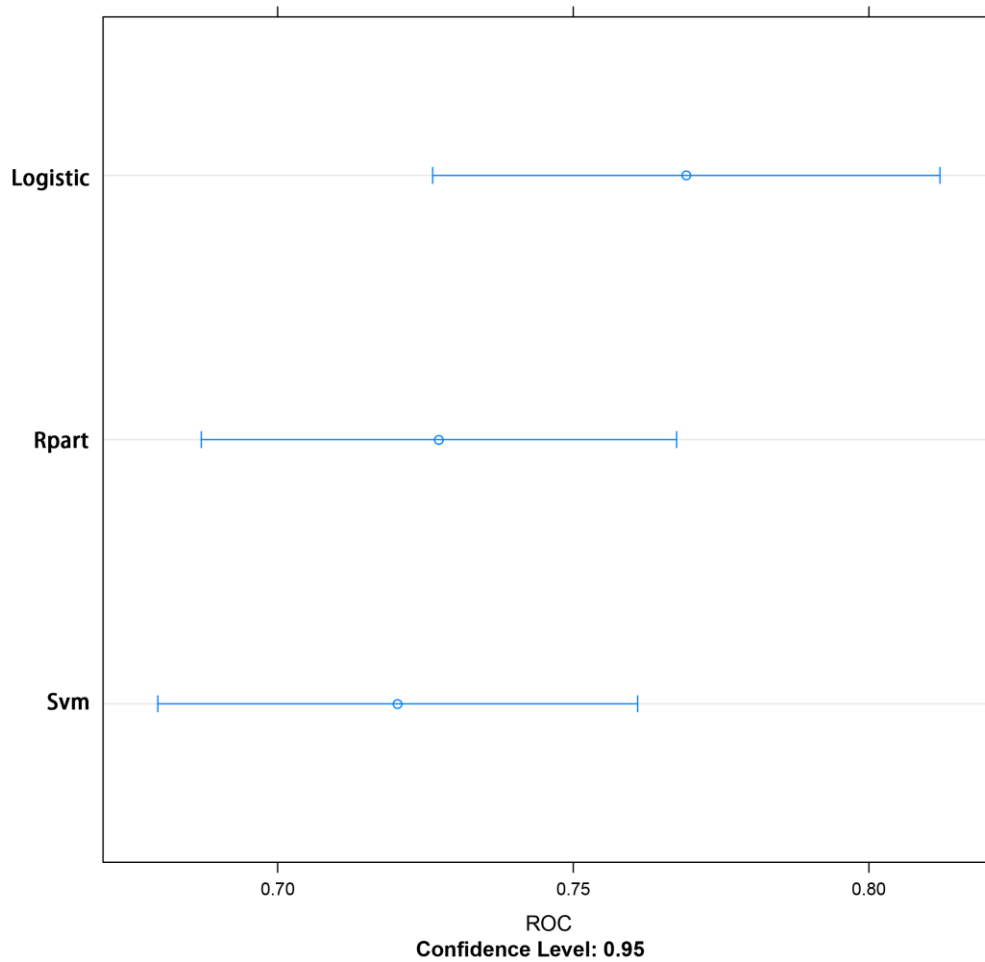
**Figure S1. The ROC curve of logistic, svm, and rpart three models for predicting significant liver fibrosis ( $S \geq 2$ ) in patients with chronic hepatitis B. The AUROC of the logistic model was significantly higher than that of svm, and rpart models.**

Svm, support vector machine; ROC, receiver operating characteristic; AUROC, the area under the ROC curve.



**Figure S2. The predictive power of logistic, svm, and rpart three models for significant liver fibrosis( $S \geq 2$ ) in patients with chronic hepatitis B. The AUROC, sensitivity and specificity of logistic were all significantly higher than that of svm, and rpart models.**

AUROC, the area under the ROC curve.



**Figure S3. 95% confidence interval under the ROC curve of logistic, svm, and rpart.**

Three models for predicting significant liver fibrosis( $S \geq 2$ ) in patients with chronic hepatitis B.