

supplementary file Figure S2

Full unedited versions of the western blots for Figure 3A

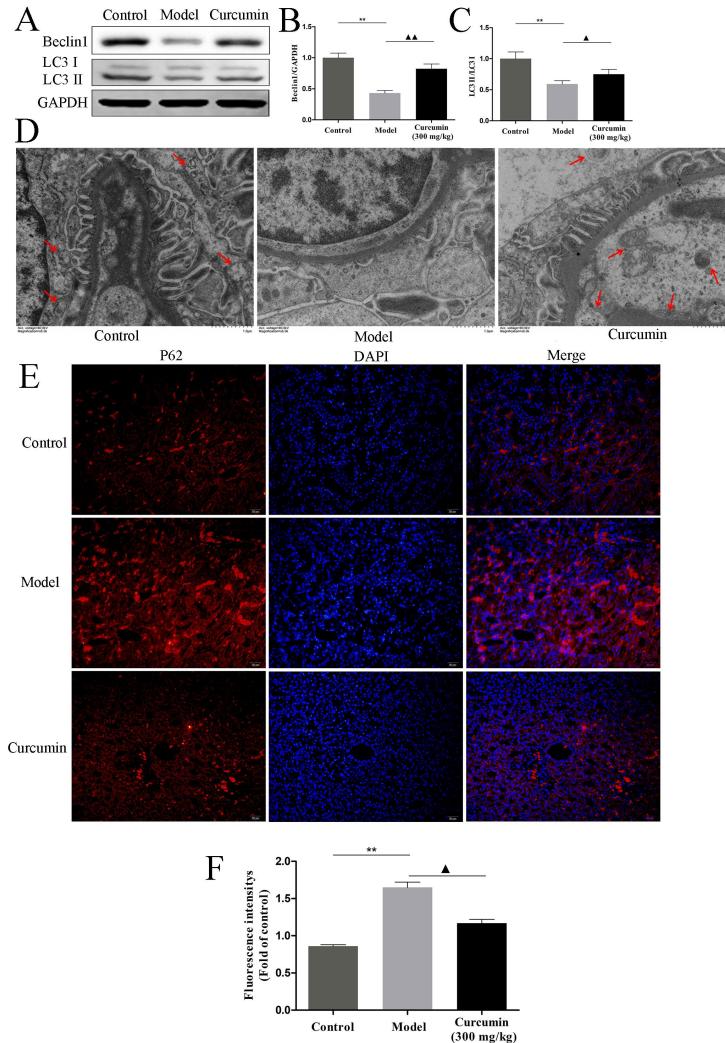


Figure 3 Curcumin treatment improves the autophagy of podocyte in PHN rats. A Representative Western blotting images of beclin1, LC3-II, and LC3-I in the renal tissues of PHN rats. GAPDH is used as a loading control. **B** Quantification of beclin1 in the PHN rats. **C** Quantification of the LC3-II/LC3-I ratio in the PHN rats. **D** Ultrastructure of autophagosomes (*arrows*) of podocytes in the control and model group were detected by the transmission electron microscopy (TEM, original magnification $\times 6000$) **E** Immunofluorescence staining for p62 expression in the renal tissues of PHN rats (Scale

bars 20 μm). **F** Analysis of fluorescence intensity of p62 positive cells in the PHN rats. $**P < 0.01$, the model group vs the control group, $^{\wedge}P < 0.05$ the model group vs the curcumin (300 mg/kg) group.

