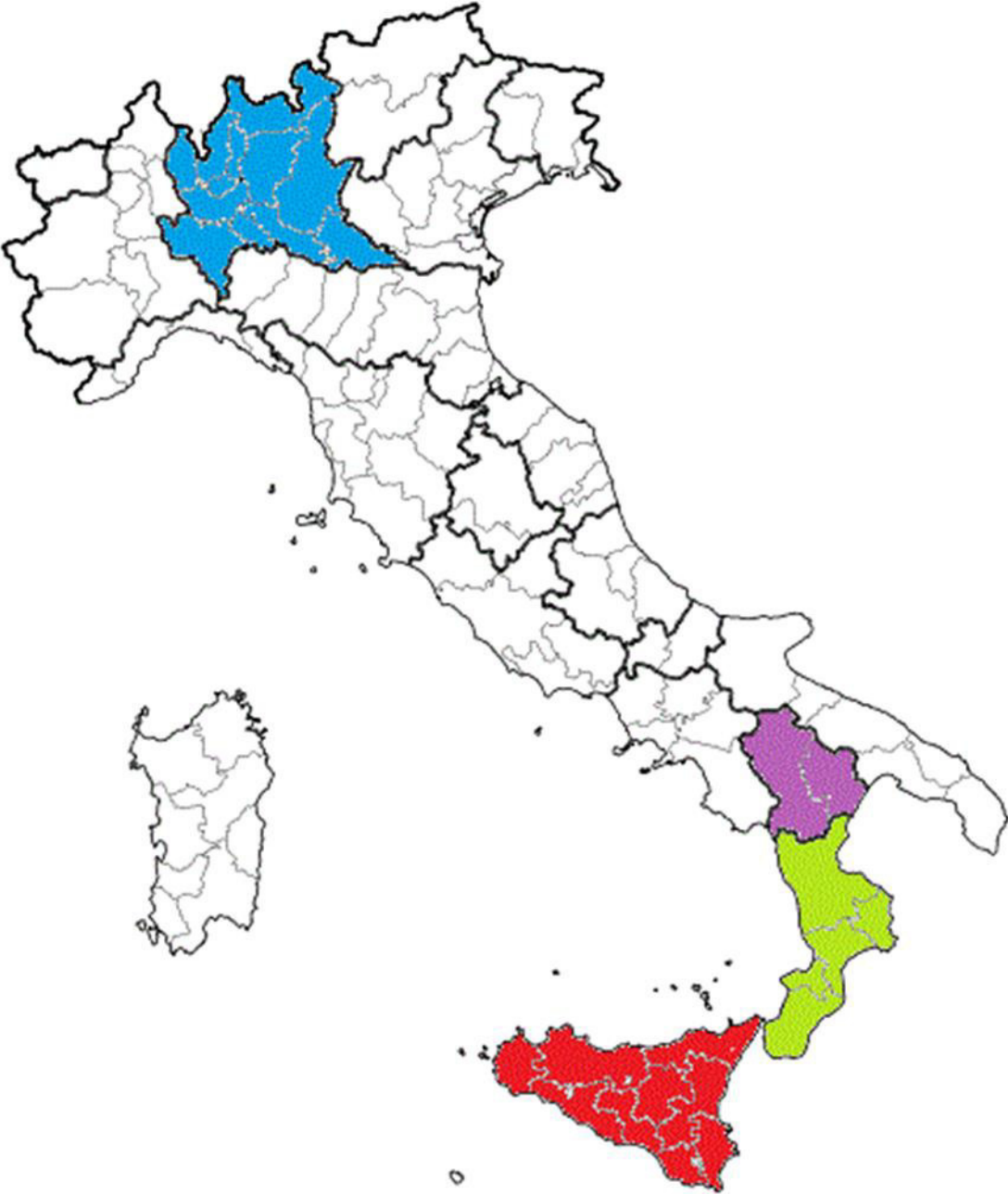


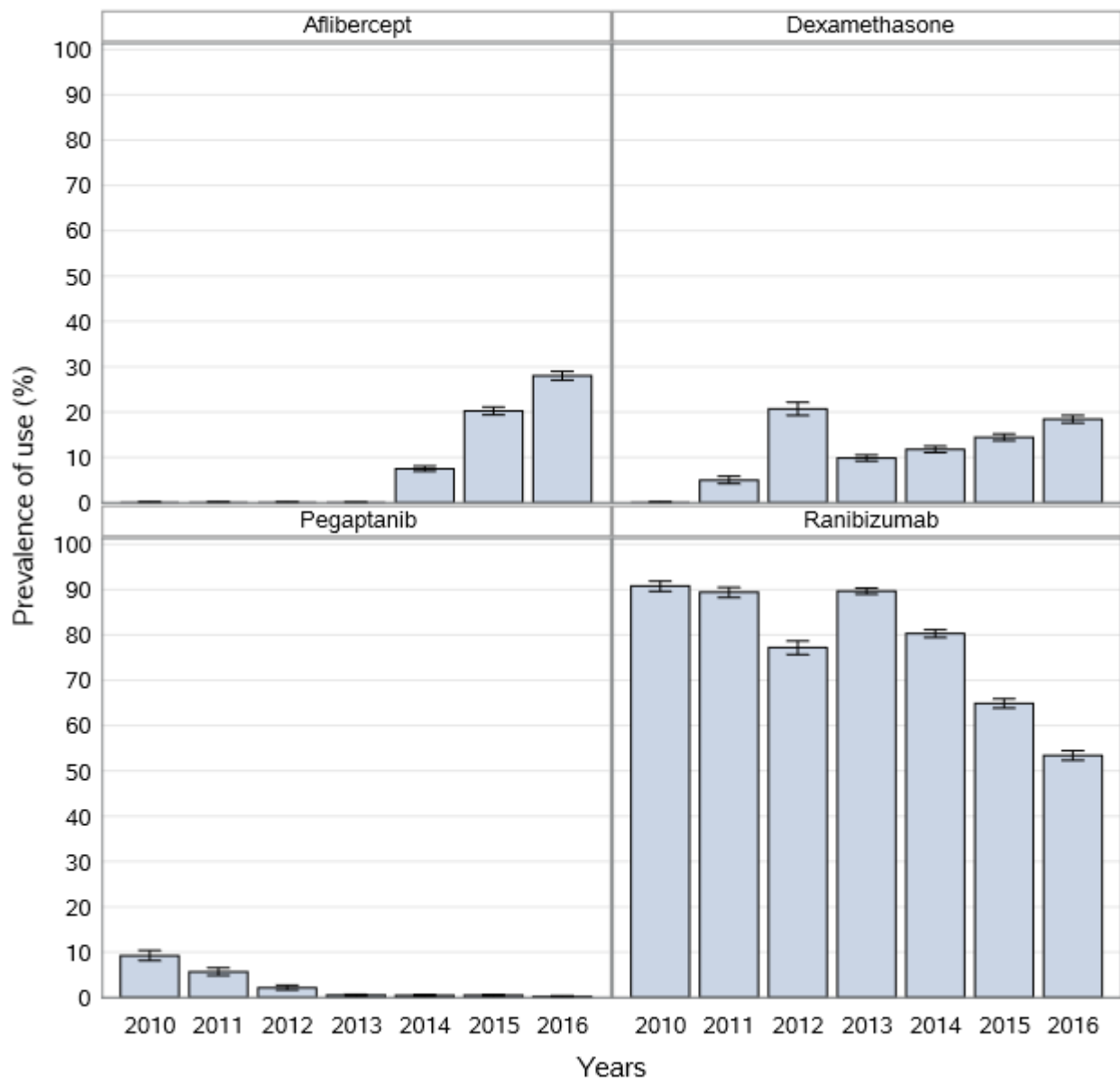
Supplemental Material 1.

Active substance	Brand name	MA date	Indication	Summary of product characteristics recommendations
Aflibercept	Eylea®	2013	nAMD	Three monthly injections, followed by 1 injection every 2 months. After the first 12 months of treatment, the treat-and-extend approach may be adopted.
			Branch or central RVO	Monthly injections. After the first 3 injections, the treat-and-extend approach may be adopted.
			DME	Five monthly injections, followed by 1 injection every 2 months. After the first 12 months of treatment, the treat-and-extend approach may be adopted.
			CNV	Injections as needed (1 injection may be sufficient)
Ranibizumab	Lucentis®	2007	nAMD	Three or more monthly injections, followed by the treat-and-extend approach.
			Branch or central RVO	
			DME	
			CNV	Injections as needed (1 injection may be sufficient).
Pegaptanib	Macugen®	2007	nAMD	One injection every 6 weeks.
Dexamethasone	Ozurdex®	2011	Branch or central RVO	One injection every 6 months.
			DME	Administration to both eyes concurrently is not recommended.
			uveitis	
Bevacizumab	Avastin®	2005	nAMD	Off-label use.

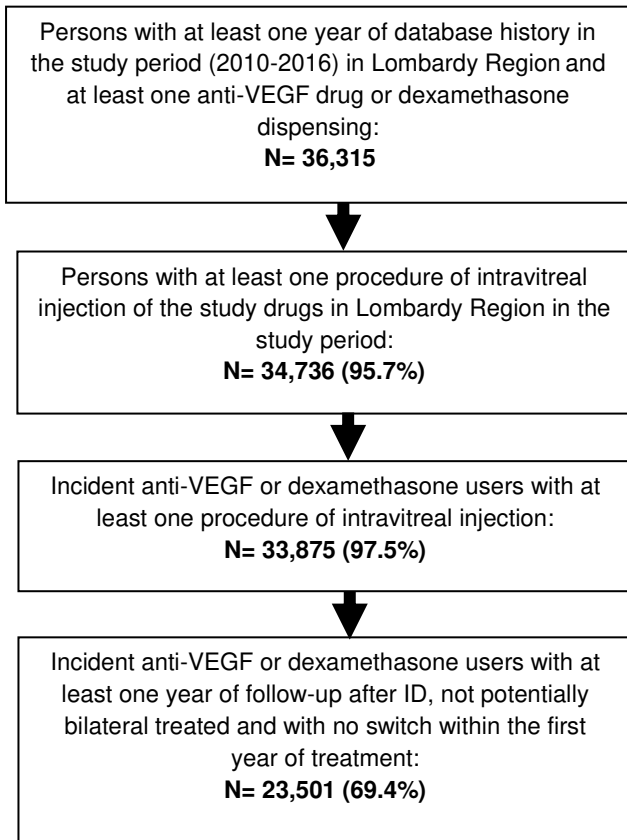
Supplementary Material 2.



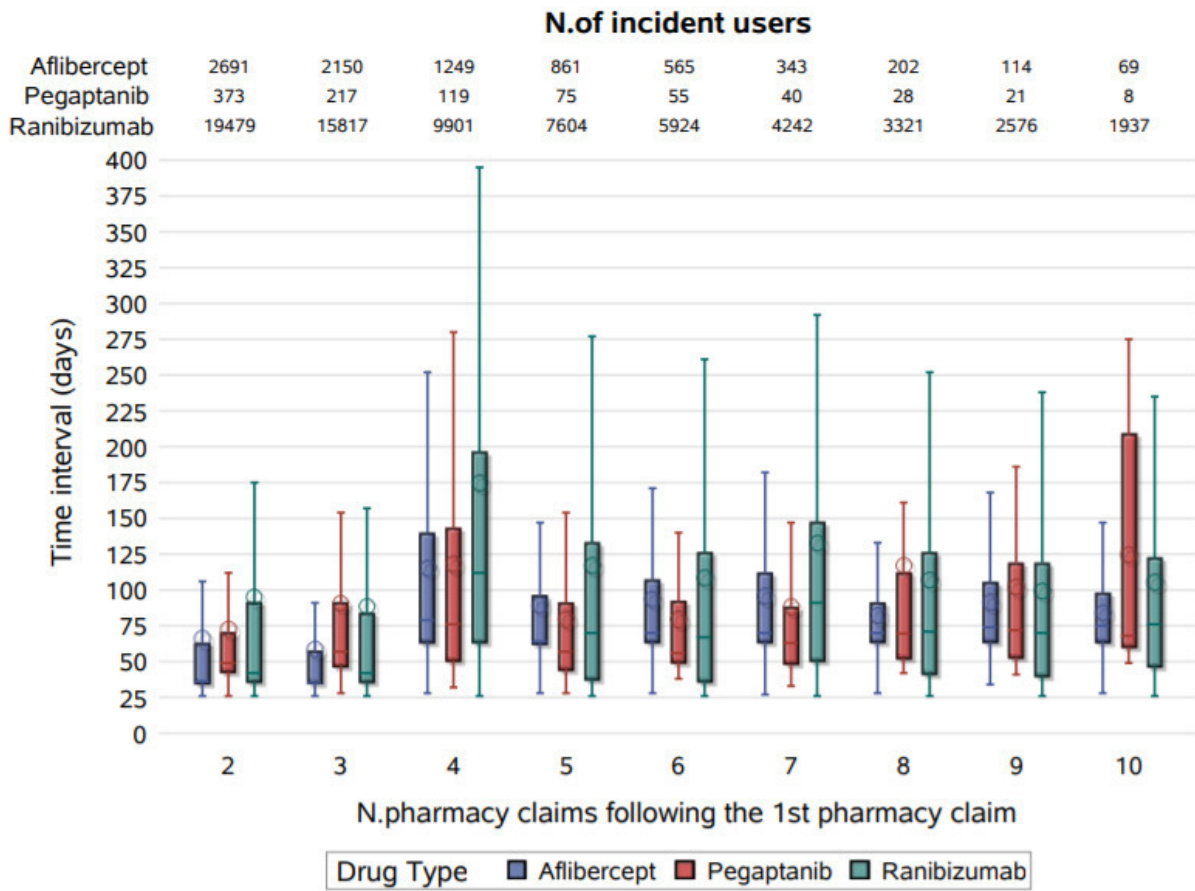
Supplemental Material 3.



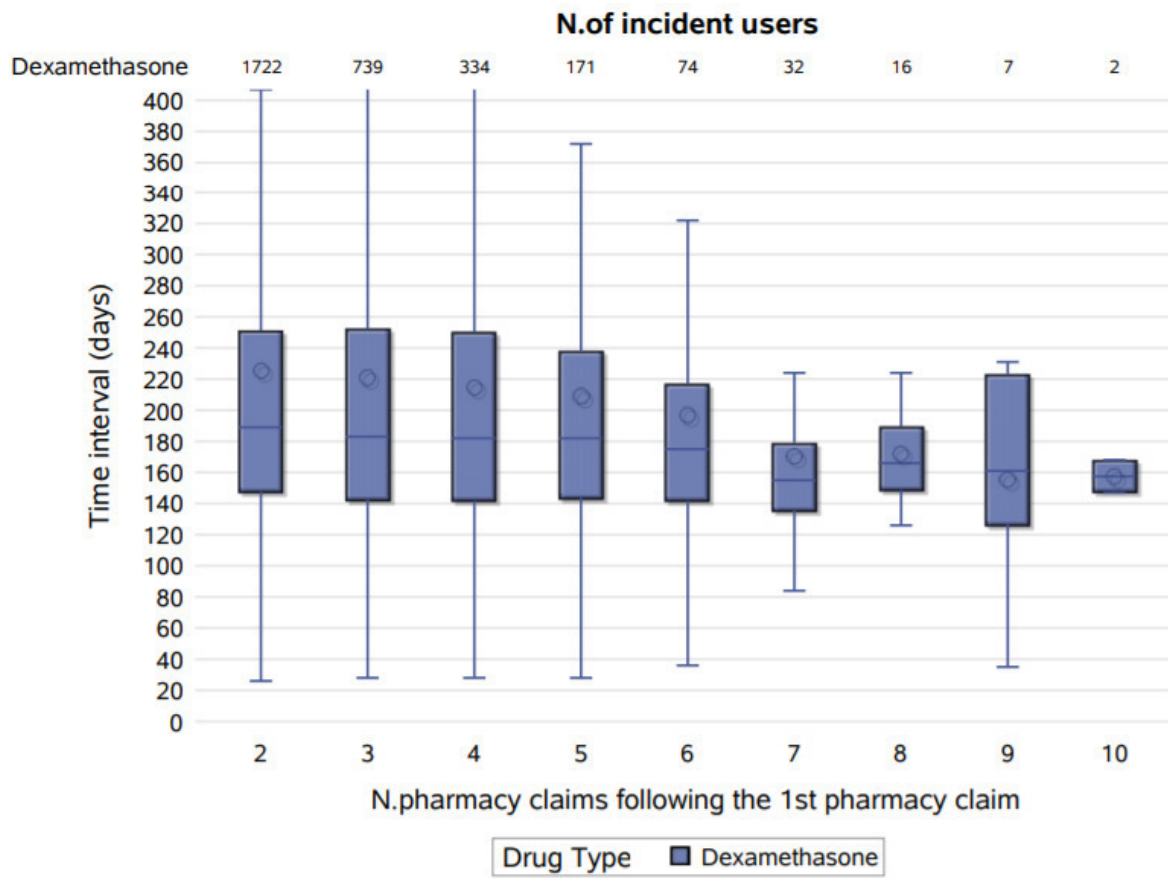
Supplemental Material 4.



Supplemental Material 5.



Supplemental Material 6.



Supplemental Material 7.

	Sensitivity	Specificity	Overall accuracy	PPV	NPV
	% (95% CI)	% (95% CI)	% (95% CI)	% (95% CI)	% (95% CI)
Bilateral treatment	25.3 (15.5 - 37.5)	96.0 (93.2 - 97.8)	83.8 (79.7 - 87.3)	56.6 (40.0 - 71.9)	86.0 (84.2 - 87.7)
DME					
Broad definition	35.6 (30.1 - 41.5)	19.8 (12.2 - 29.5)	31.8 (27.2 - 36.8)	58.5 (54.0 - 62.9)	8.8 (6.0 - 12.9)
Narrow definition	17.7(12.5 - 25.6)	98.8 (96.6 - 99.8)	72.3 (67.6 - 76.8)	88.0 (69.1 - 96.0)	71.2 (69.5 - 72.9)