

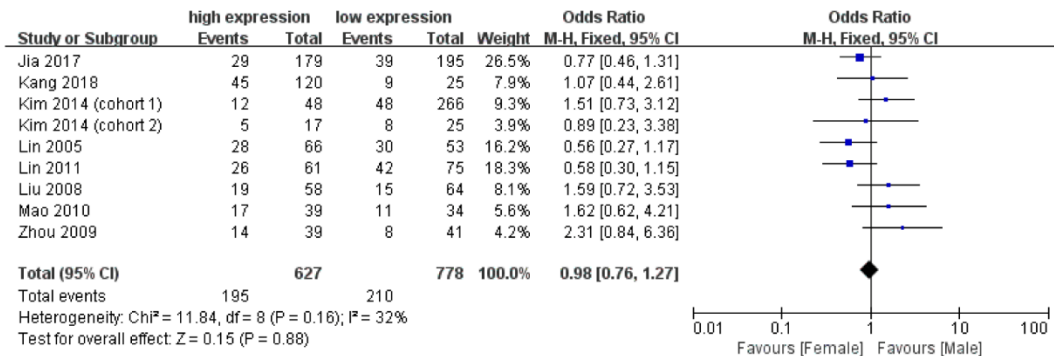
## Supplementary materials

**Suppl Table 1.** Association between CTGF expression and clinico-pathological features of cancers

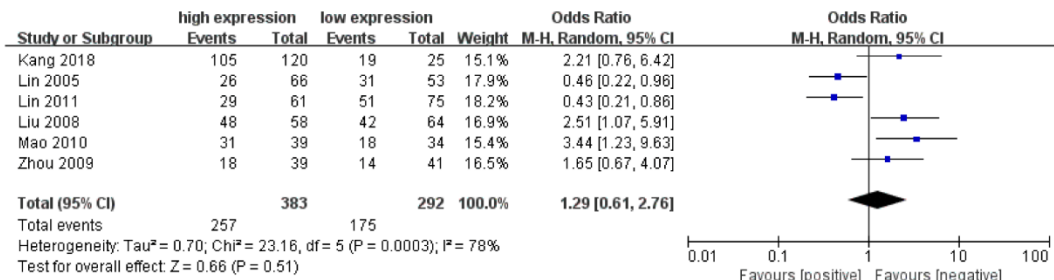
Characteristics	Tumor size (cm) (large vs. small)				Lymph node metastasis (positive vs. negative)				Differentiation (poor vs. well, moderate)				TNM Stage (III +IV vs. I + II)				Tumor Number (multiple vs. single)				Vascular Invasion (present vs. absent)				Capsule Formation (present vs. absent)							
	a1	a0	b1	b0	a1	a0	b1	b0	a1	a0	b1	b0	a1	a0	b1	b0	a1	a0	b1	b0	a1	a0	b1	b0	a1	a0	b1	b0				
Study ID	a1	a0	b1	b0	a1	a0	b1	b0	a1	a0	b1	b0	a1	a0	b1	b0	a1	a0	b1	b0	a1	a0	b1	b0	a1	a0	b1	b0	a1	a0	b1	b0
Kang 2018	-	-	-	-	105	15	19	6	64	56	16	9	93	27	14	11	-	-	-	-	-	-	-	-	-	-	-	-	-	-	-	-
Jia 2017	42	137	38	157	-	-	-	-	-	-	-	-	-	-	-	-	13	166	5	190	62	117	48	147	93	86	80	115				
Lin 2005	-	-	-	-	26	40	31	22	4	62	3	49	32	34	36	17	-	-	-	-	-	-	-	-	-	-	-	-				
Kim 2014 (cohort 1)	12	36	52	214	-	-	-	-	29	19	130	136	5	43	12	254	11	37	41	225	29	19	150	116	35	13	225	41				
Kim 2014 (cohort 2)	10	7	6	19					10	7	11	14	2	15	1	24	3	14	1	24	13	4	17	8	15	2	25	0				
Liu 2009	33	25	33	31	48	10	42	22	26	32	45	19	42	16	38	26	-	-	-	-	-	-	-	-	-	-	-	-				
Mao 2010	29	10	23	11	31	8	18	16	29	10	15	19	25	14	18	16	-	-	-	-	-	-	-	-	-	-	-	-				
Lin 2011	-	-	-	-	29	32	51	24	5	56	21	54	34	27	55	20	-	-	-	-	-	-	-	-	-	-	-	-				
Gardini 2005	-	-	-	-	-	-	-	-	20	13	13	9	-	-	-	-	-	-	-	-	-	-	-	-	-	-	-	-				
Zhou 2009	-	-	-	-	18	21	14	27	4	35	4	37	20	19	15	26	-	-	-	-	-	-	-	-	-	-	-	-				

a1, a0 (ref): CTGF overexpression; b1, b0 (ref): normal/low expression of CTGF.

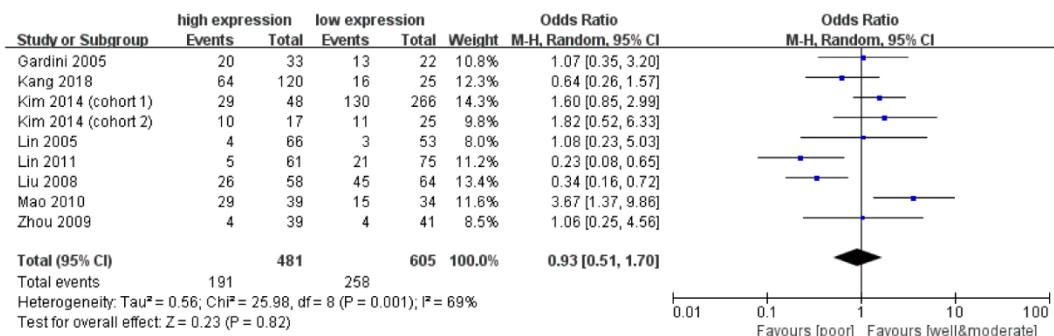
**a**



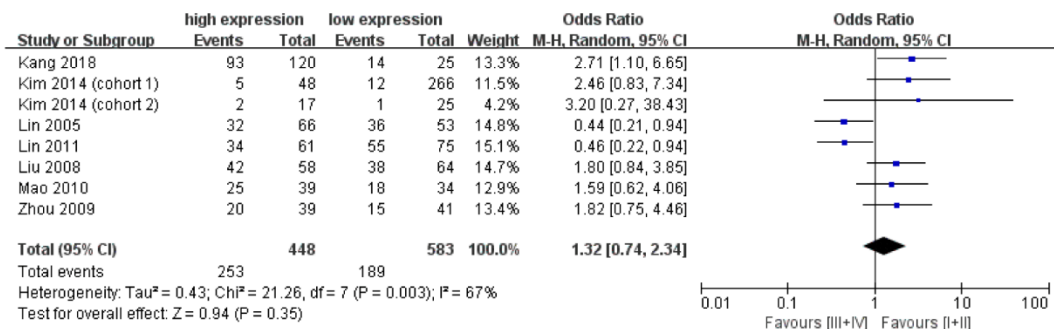
**b**



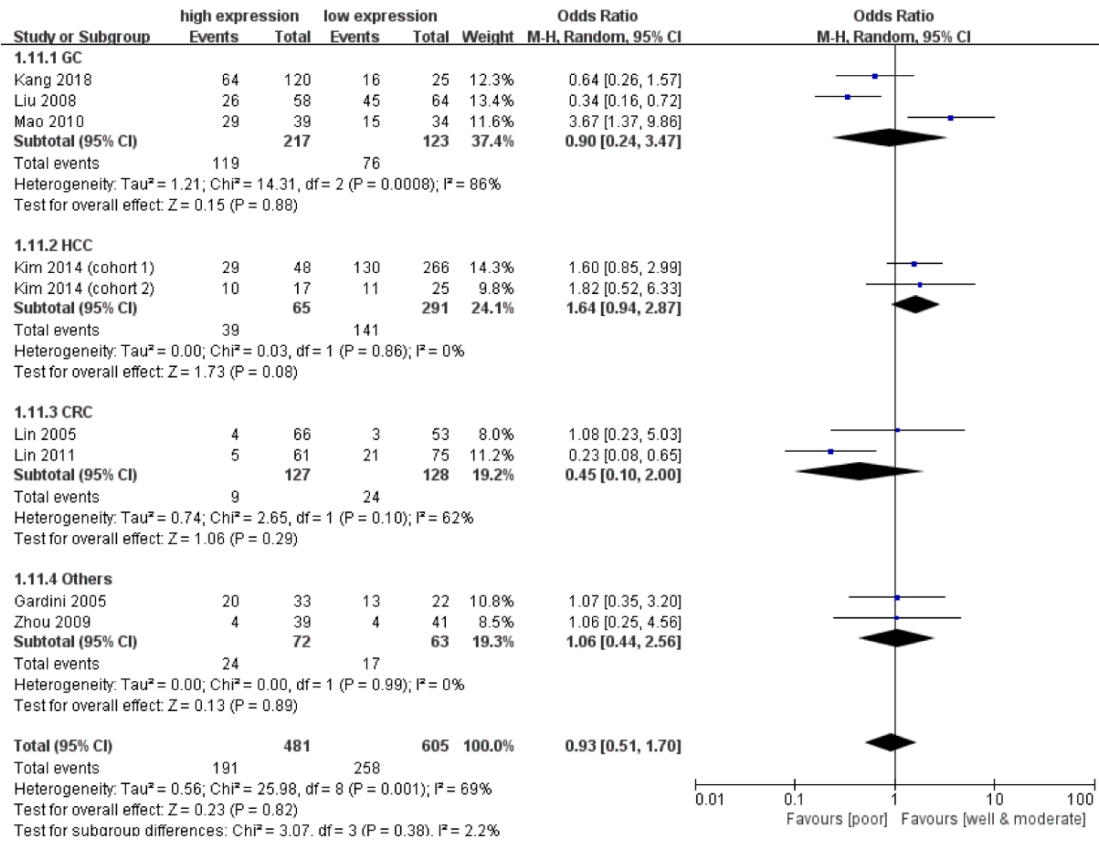
**c**



**d**

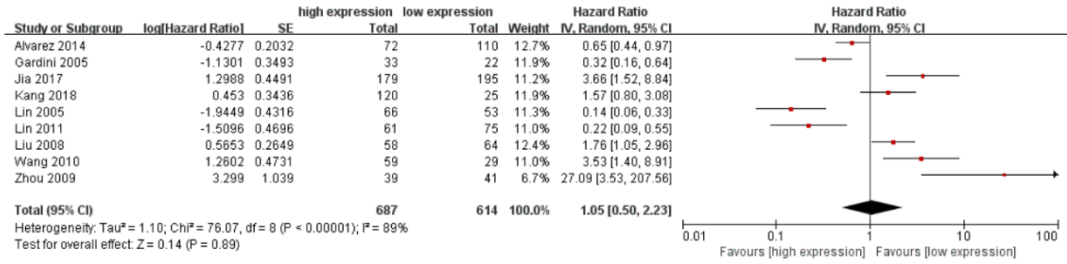


**Suppl. Figure 1**

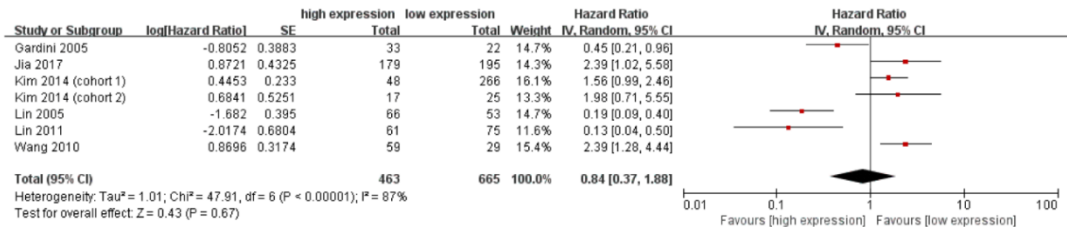


Suppl. Figure 2

**a**

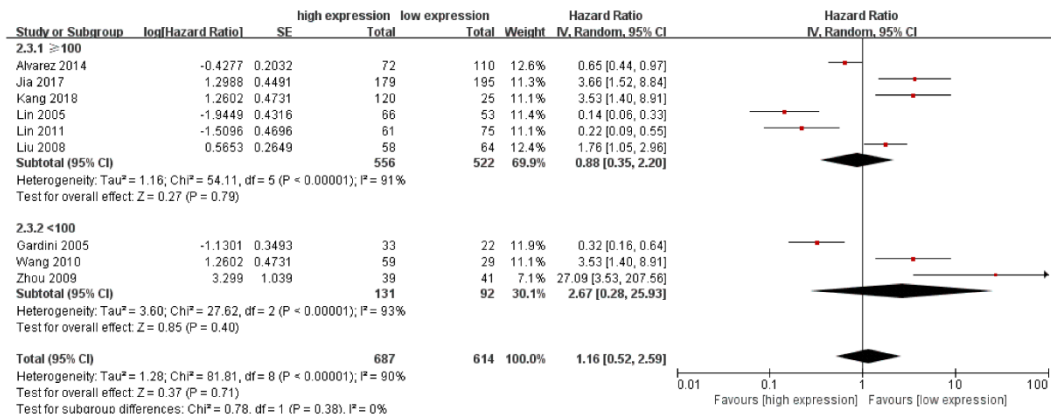


**b**

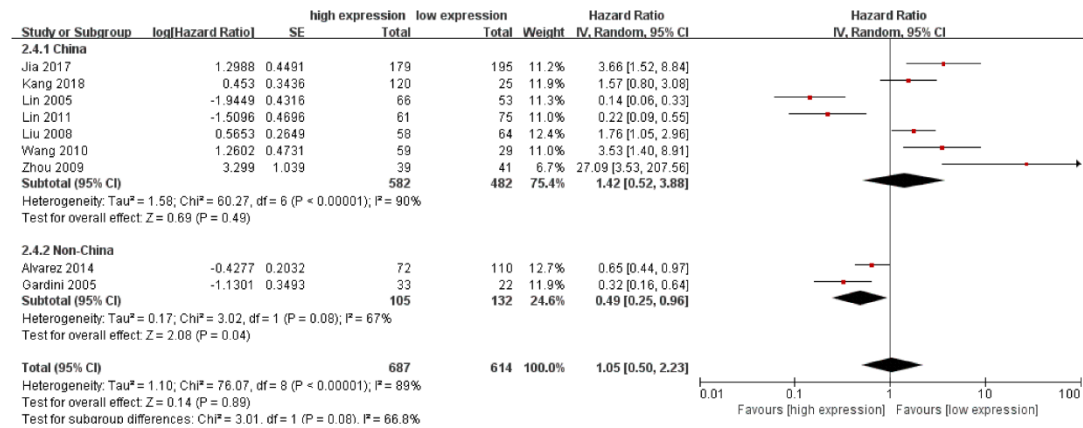


**Suppl. Figure 3**

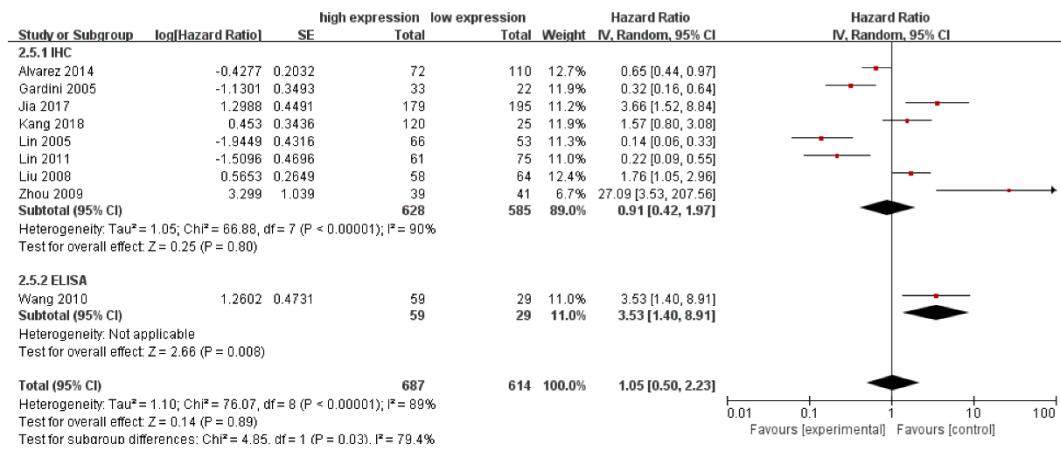
**a**



**b**



**c**



**Suppl. Figure 4**