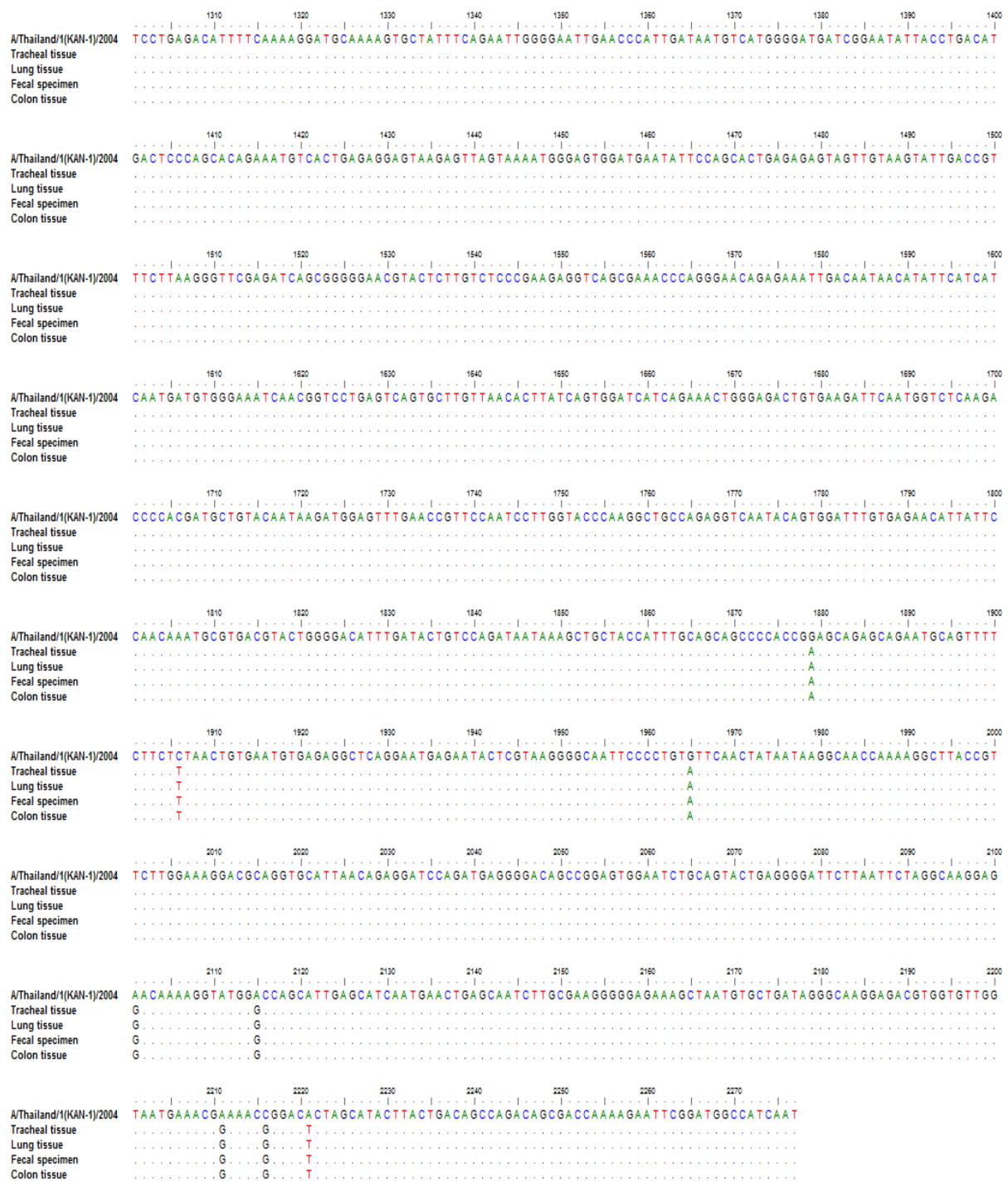


PB2



PB2 (Con't)



Nucleotide change at position 945 from G to A resulted in M315I amino acid change

PB1



PB1 (Con't)



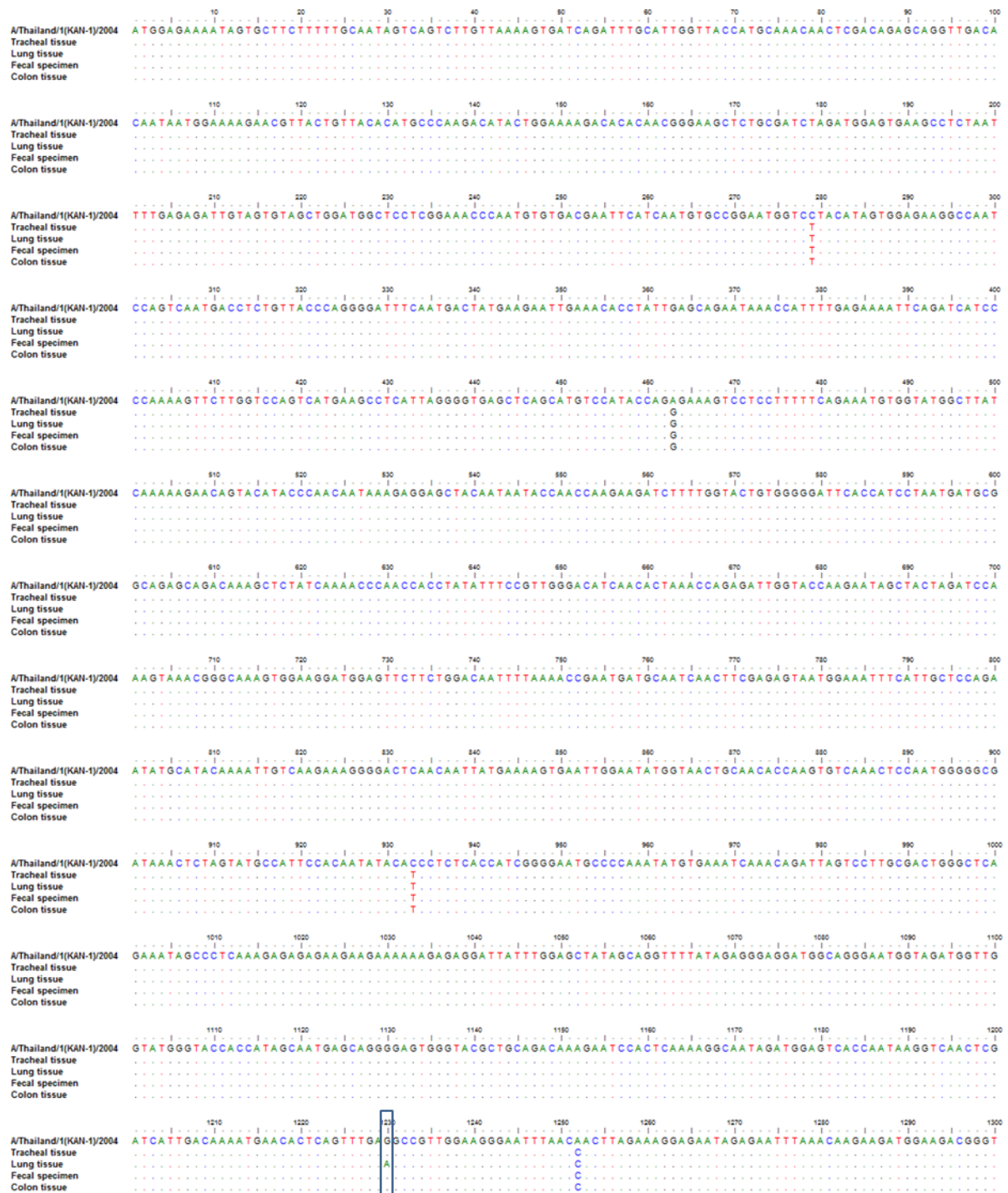
Figure 1 displays the nucleotide sequence alignment of the *hK1* gene across four tissues (Tracheal tissue, Lung tissue, Fecal specimen, and Colon tissue) for the A/Thailand/1/(KAN-1)/2004 virus. The alignment is presented in 10 blocks, each showing the sequence for the four tissues and the reference sequence (A/Thailand/1/(KAN-1)/2004). The reference sequence is shown in green, and the tissue sequences are shown in blue. The alignment shows high similarity between the reference sequence and the tissue sequences, with some minor variations observed in the Fecal specimen and Colon tissue sequences. The alignment is presented in 10 blocks, each showing the sequence for the four tissues and the reference sequence (A/Thailand/1/(KAN-1)/2004). The reference sequence is shown in green, and the tissue sequences are shown in blue. The alignment shows high similarity between the reference sequence and the tissue sequences, with some minor variations observed in the Fecal specimen and Colon tissue sequences.

PA (Con't)

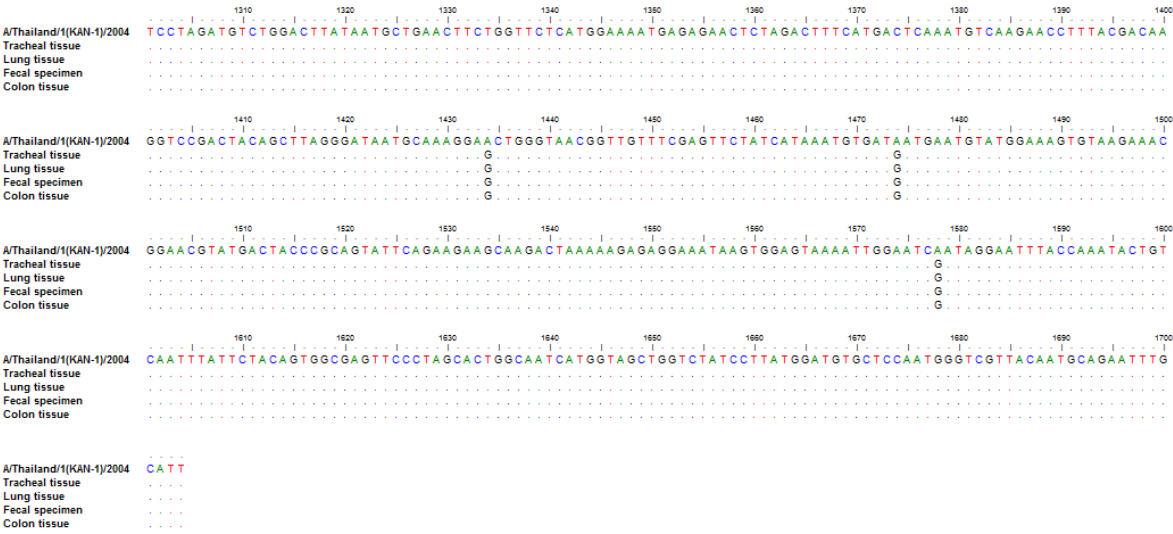


Nucleotide change at position 1882 from A to G resulted in M628V amino acid change.

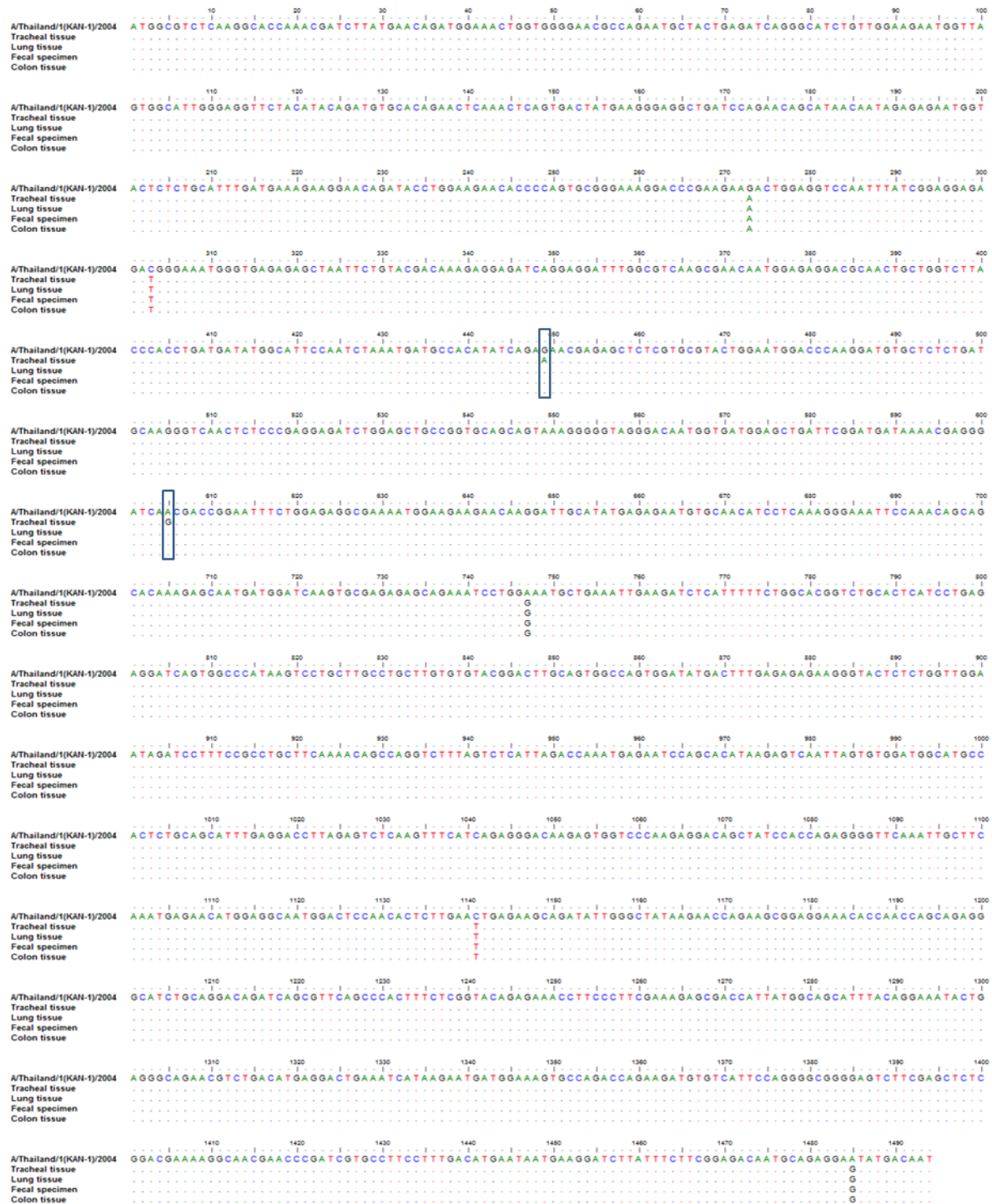
HA



HA (Con't)



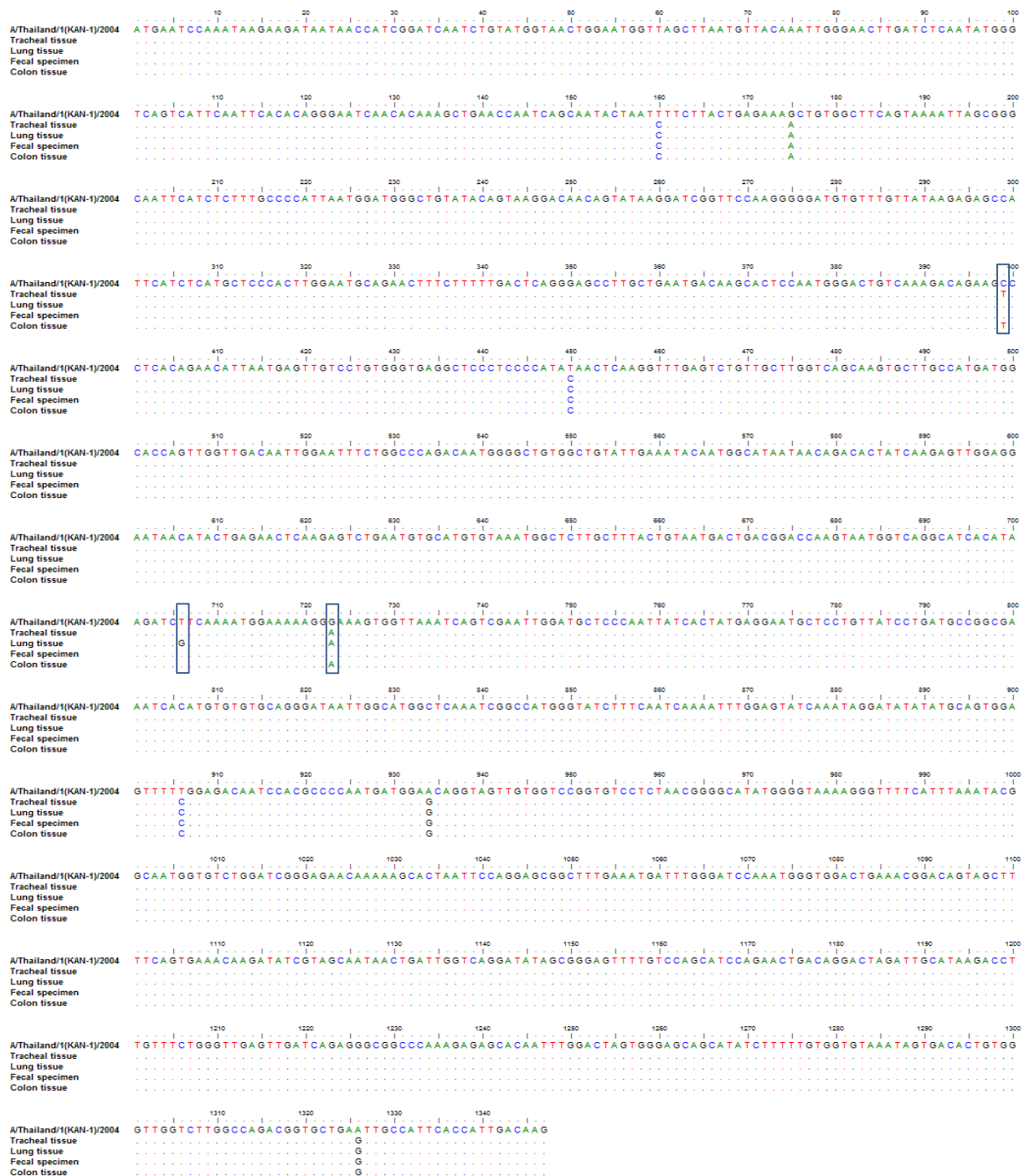
NP



Nucleotide change at position 499 from A to G resulted in K150R amino acid change.

Nucleotide change at position 1882 from G to A resulted in S202N amino acid change.

NA



Nucleotide change at position 706 from G to A resulted in V236F amino acid change.