

Supplementary Material

Figure S1 CKS1B expression in different types of human tumors.

The basal expression level of CKS1B in different (A) blood cells, (B) tumor cell lines, and (C) tumor tissues using Consensus database. (D) The expression of CKS1B in paired tumors and normal tissues of CHOL, ESCA, KIRP, READ, COADREAD, THCA, KICH and PRAD. (E) Correlations between CKS1B and tumor stages in BRCA, LIHC and THCA patients based on GEPIA2. * $P < 0.05$; ** $P < 0.01$; *** $P < 0.001$.

Figure S2 Correlation of CKS1B expression level with survival prognosis.

(A) Overall survival and (B) disease-free survival of different tumors based on CKS1B expression level (GEPIA2). (C) Predictive value of CKS1B expression for diagnosis in BRCA, COAD, ESCA, LUSC, OV, READ, KIRC and GEM patients.

Figure S3 Correlation of CKS1B expression with tumor immune infiltration.

Heat maps of the relationship between CKS1B expression and (A) B lymphocytes, (B) T lymphocytes, (C) chemokines and (D) chemokine receptors.

Figure S1

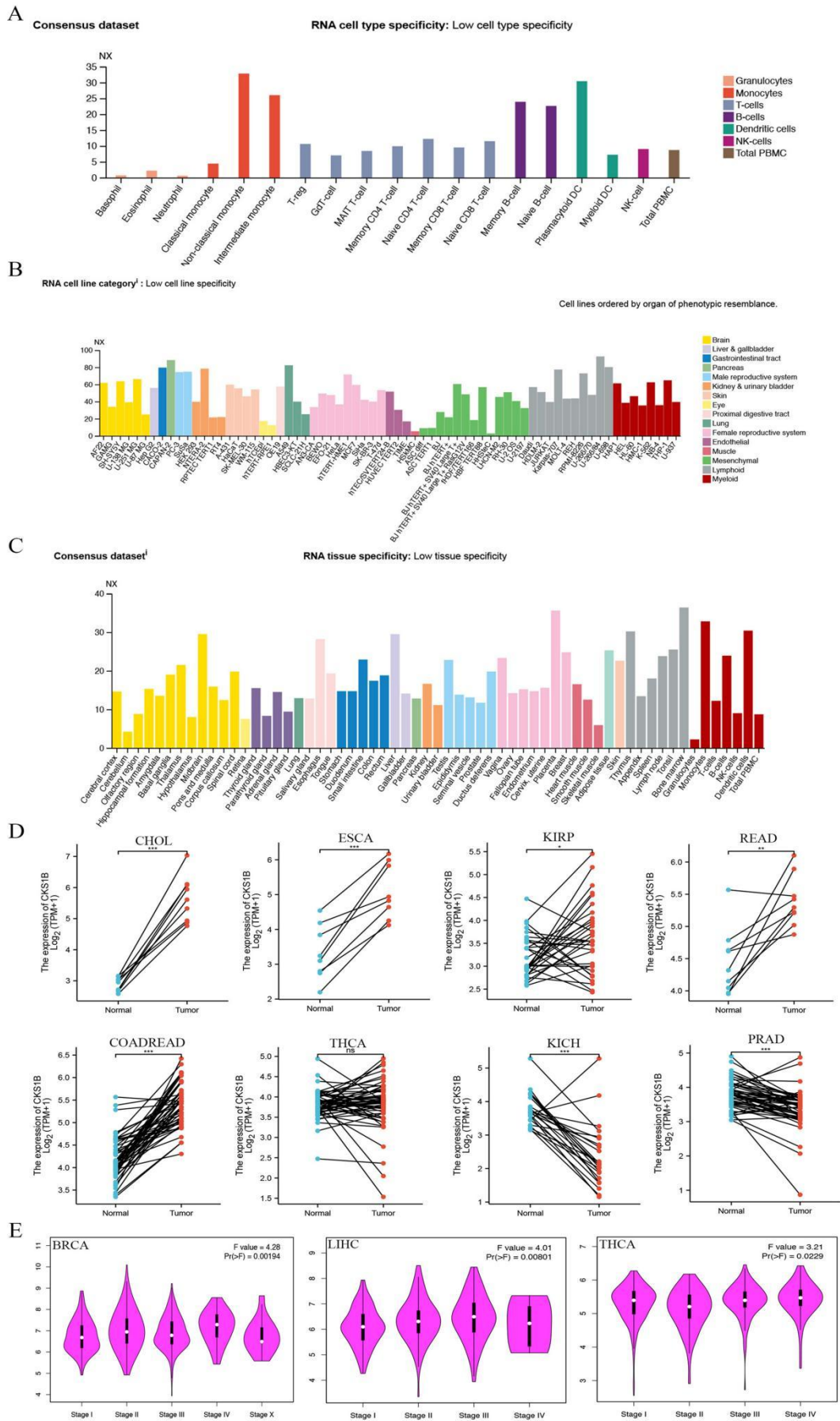


Figure S2

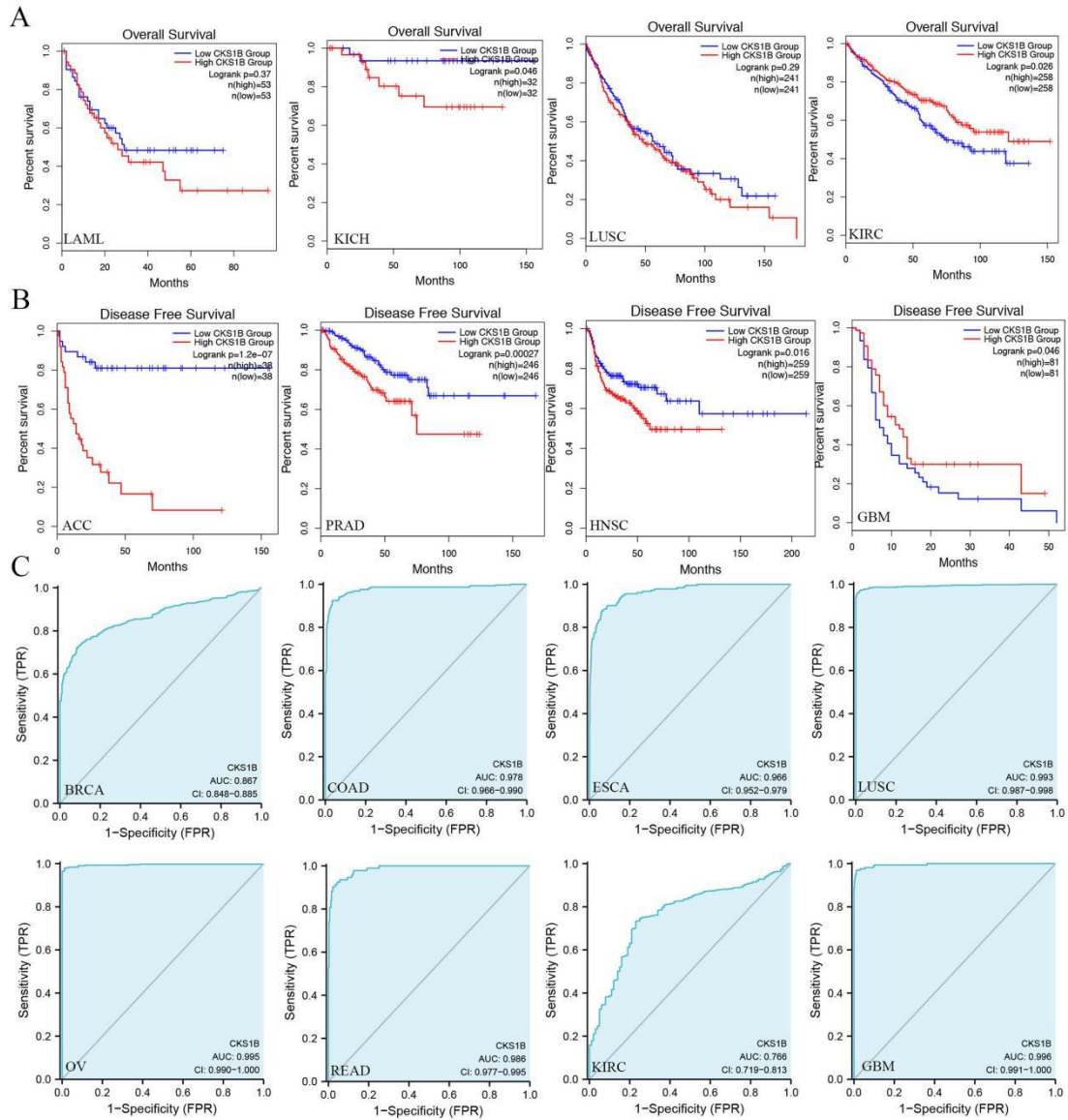
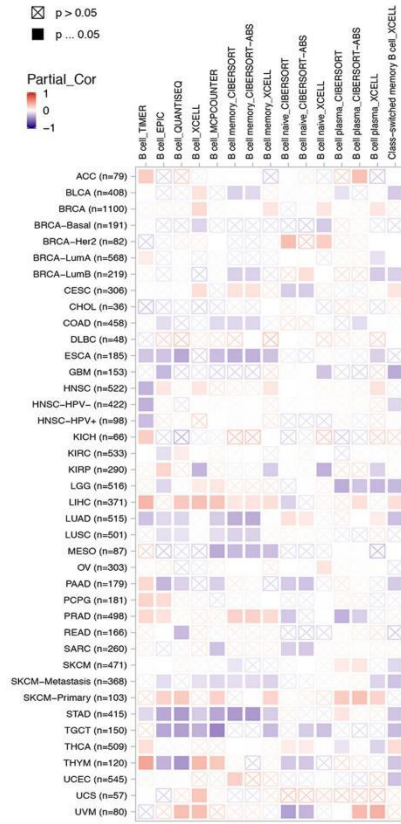
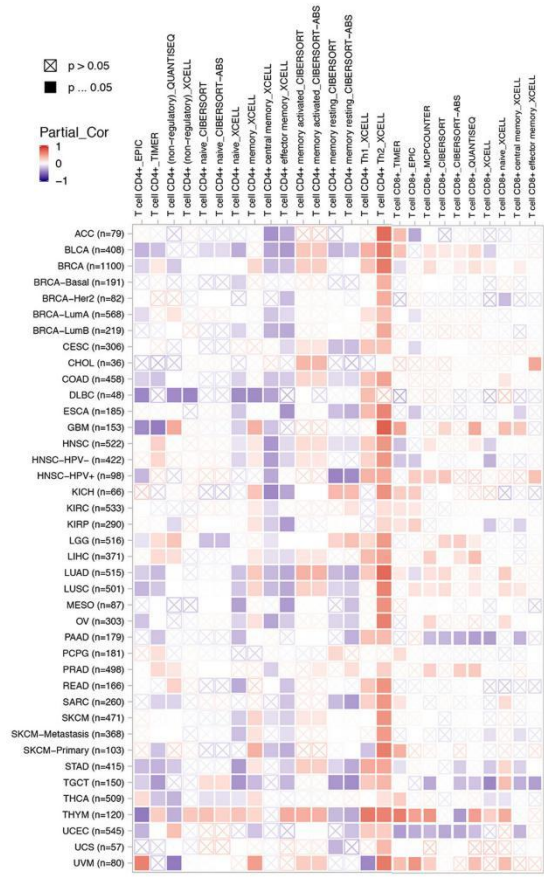


Figure S3

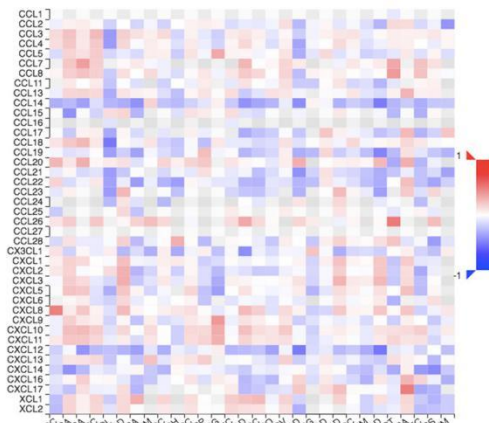
A



B



C



D

