

Supplementary Materials

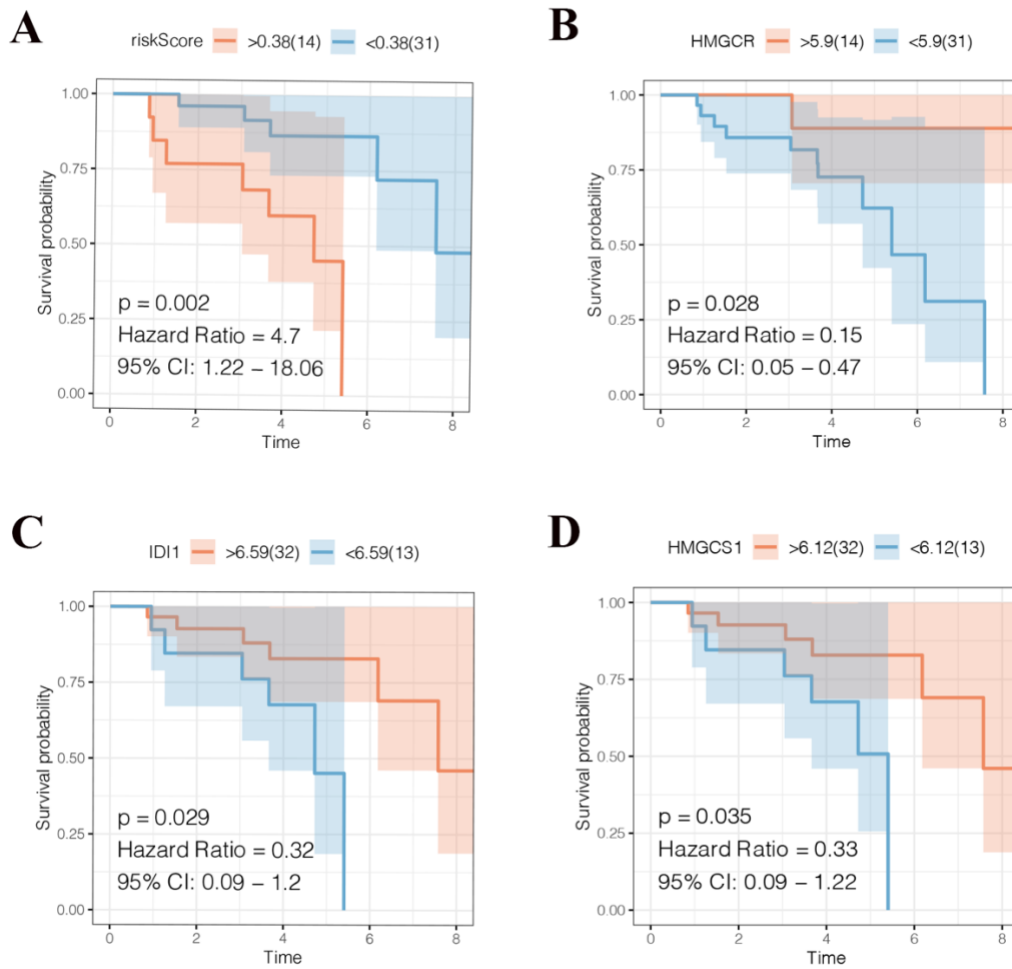


Figure S1: Random sampling validation. (A) Based on this risk model, 45 patients with ccRCC randomly sampled from TCGA database were divided into high- and low-risk groups, and the corresponding survival curves were drawn. (B-D) Based on the expression of key genes of HMGCRC, IDI1 and HMGC1, the corresponding survival curves were drawn in ccRCC.