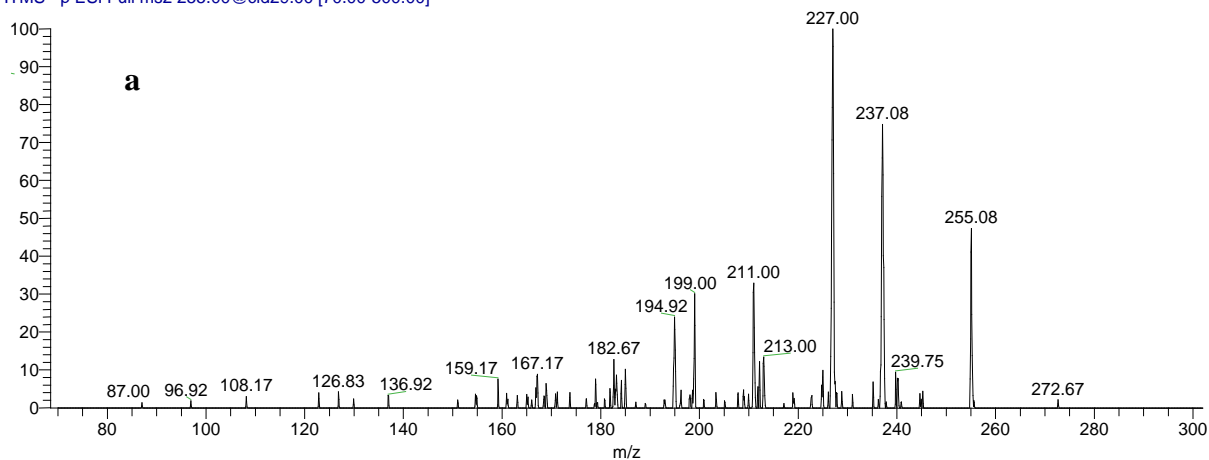
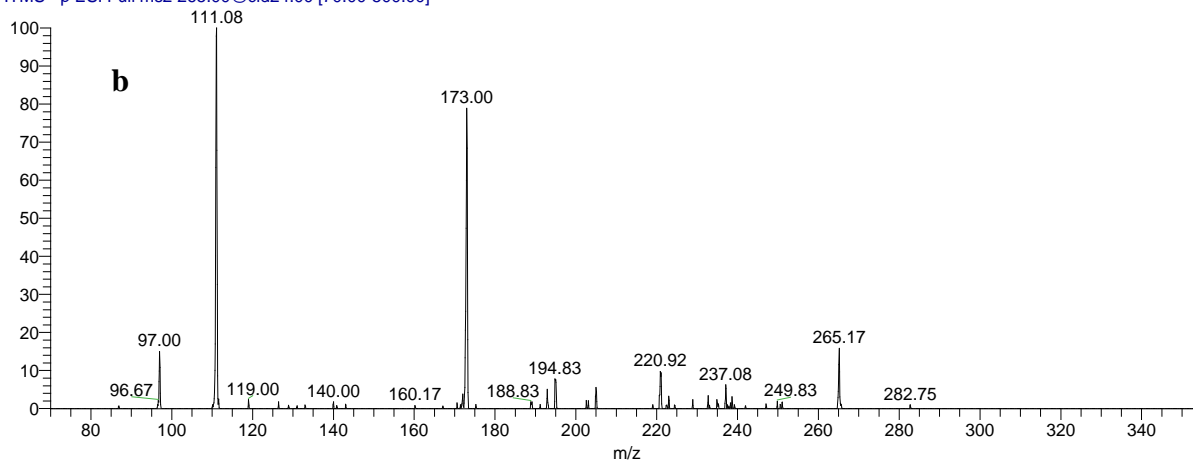


## Supplementary figure 2 (a – e): ESI-MS/MS analysis of GAMF3

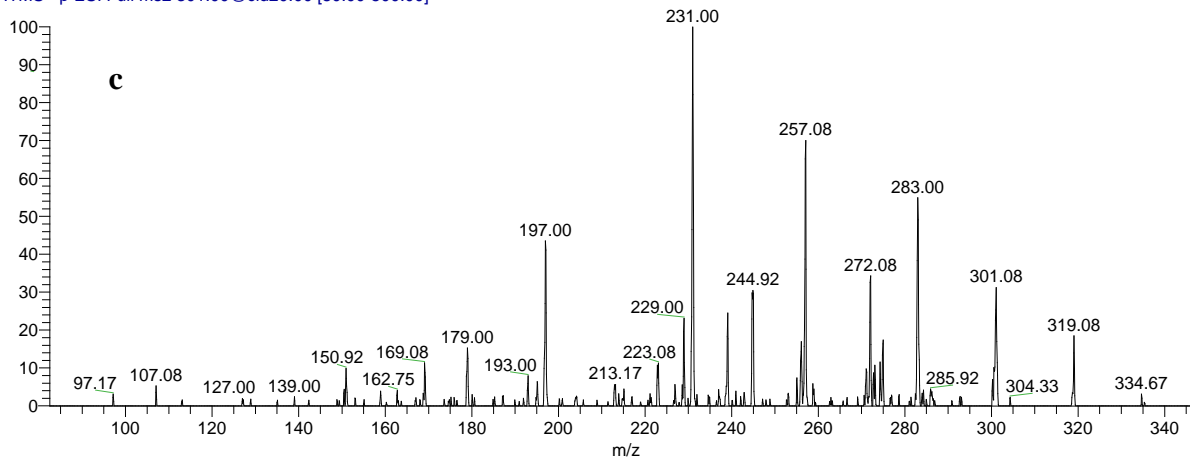
T: ITMS - p ESI Full ms2 255.00@cid29.00 [70.00-500.00]



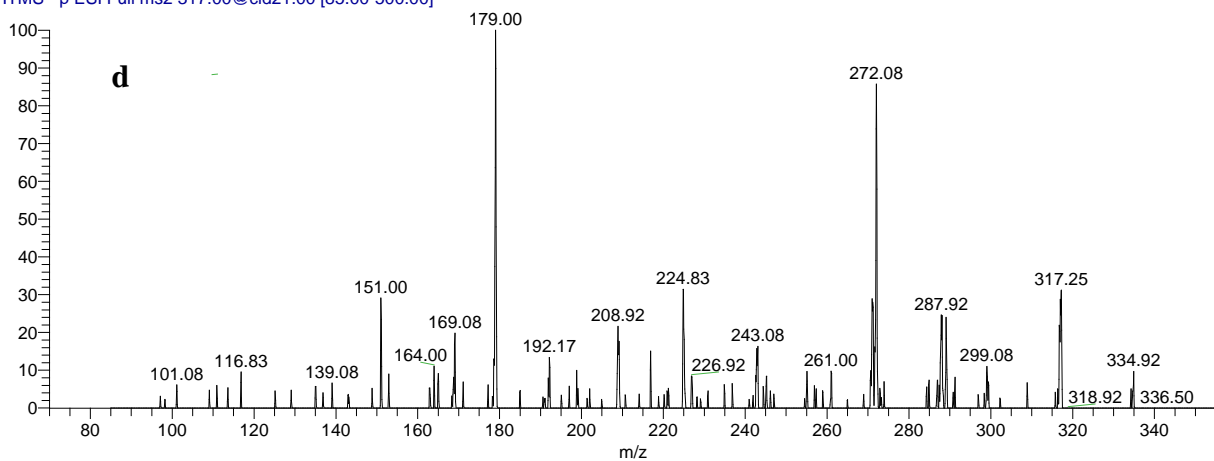
T: ITMS - p ESI Full ms2 265.00@cid24.00 [70.00-500.00]



T: ITMS - p ESI Full ms2 301.00@cid20.00 [80.00-500.00]



T: ITMS - p ESI Full ms2 317.00@cid21.00 [85.00-500.00]



T: ITMS + p ESI Full ms2 324.00@cid20.00 [85.00-500.00]

