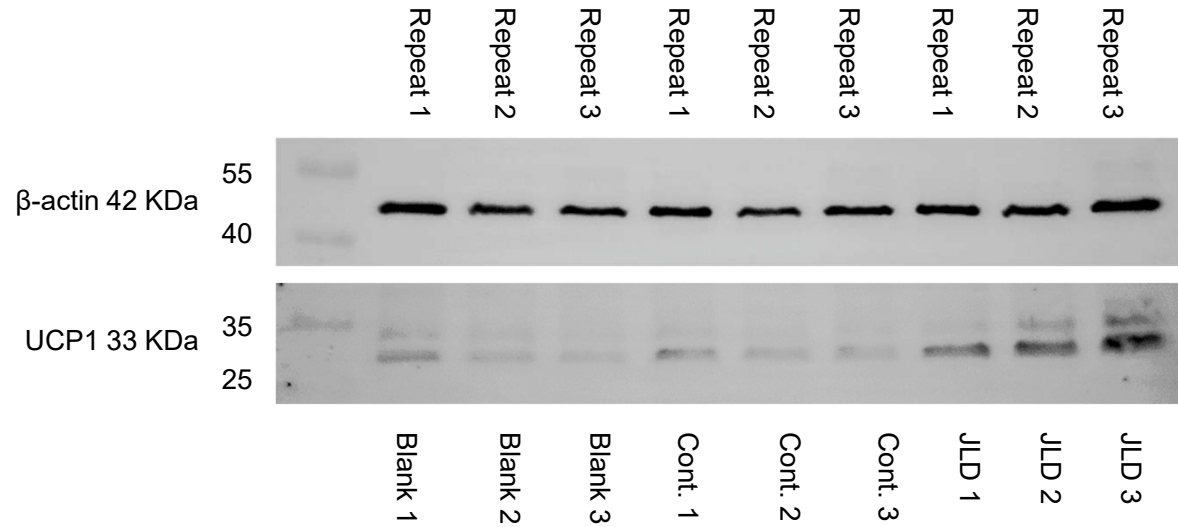
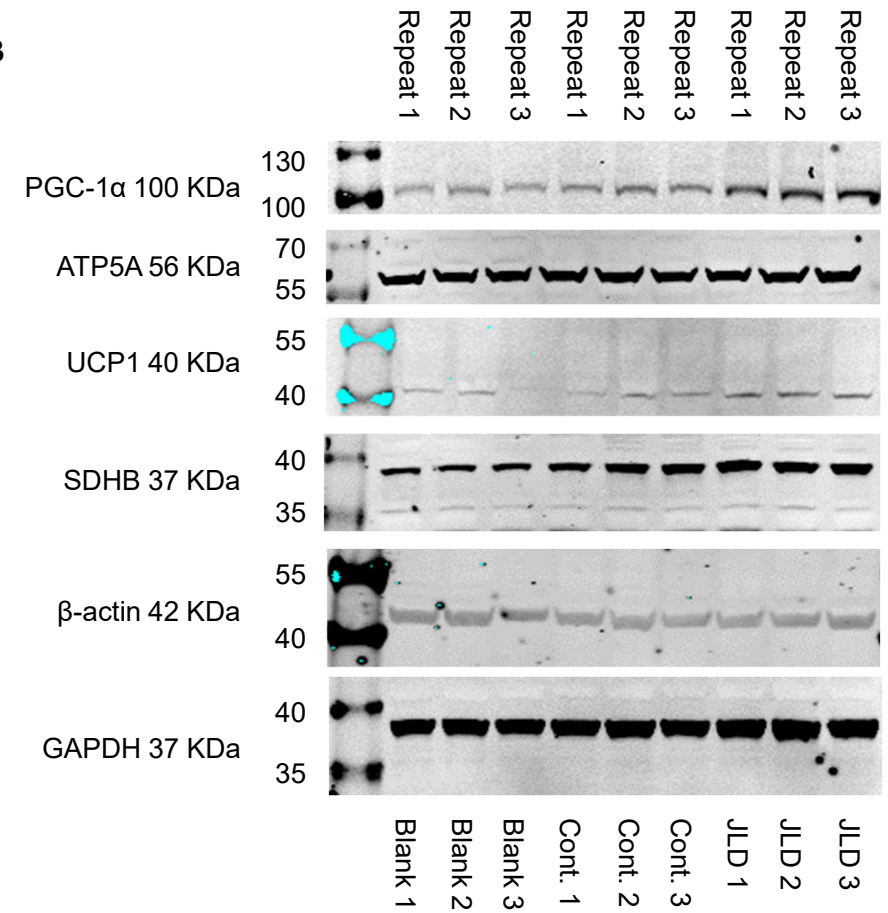


A**B**

S1_raw_images. (A) The whole blot after cutting membrane at molecular weight 40~55 kDa and 25~35 kDa for β -actin (42 kDa) and UCP1 (33 kDa) respectively. (B) The whole blot after cutting membrane at molecular weight 100~130 kDa, 55~70kDa, 40~55 kDa, 40~55 kDa, 35~40 kDa, and 35~40 kDa for PGC-1 α (100 kDa), ATP5A (56 kDa), UCP1 (40kDa), SDHB (37 kDa), β -actin (42 kDa) and GAPDH (37 kDa) respectively.