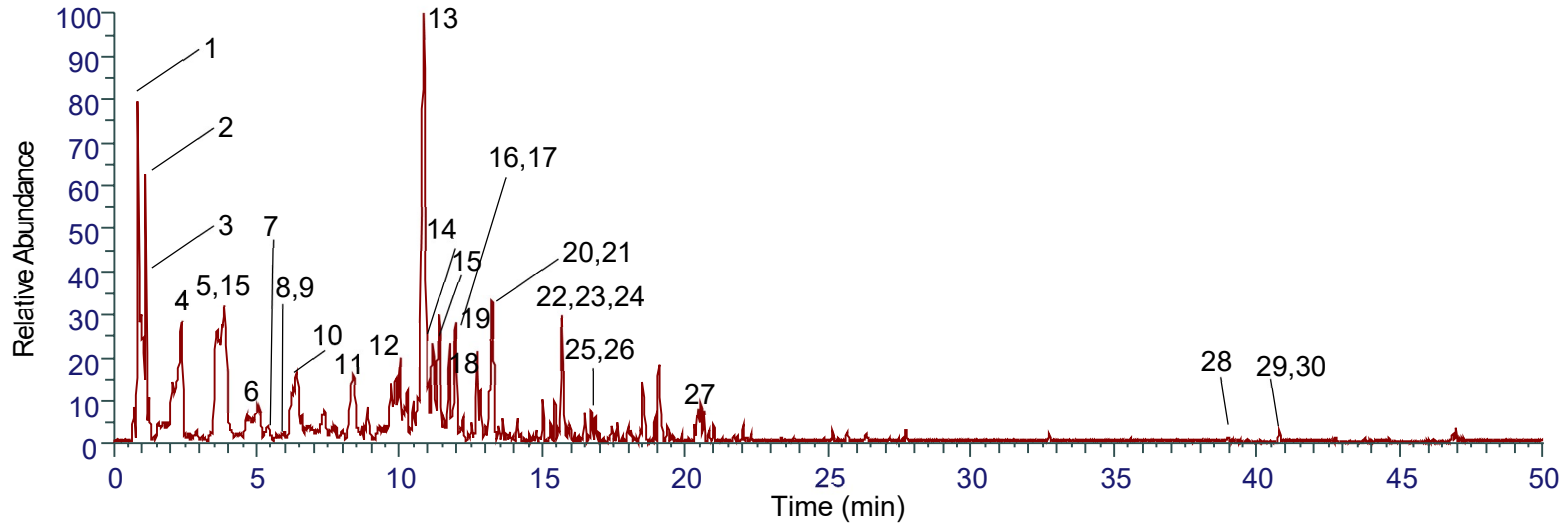


A:

F: FTMS - p ESI Full ms [120.0000-1800.0000]-neg

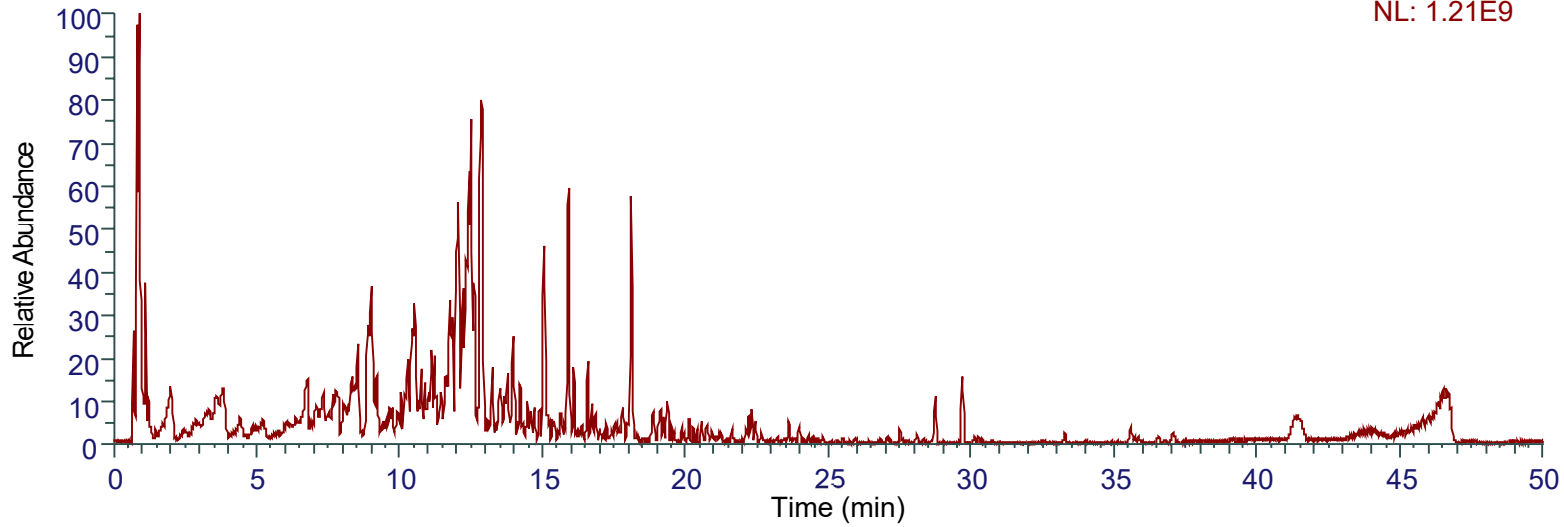
NL: 1.60E9



B:

MS F: MS -pos

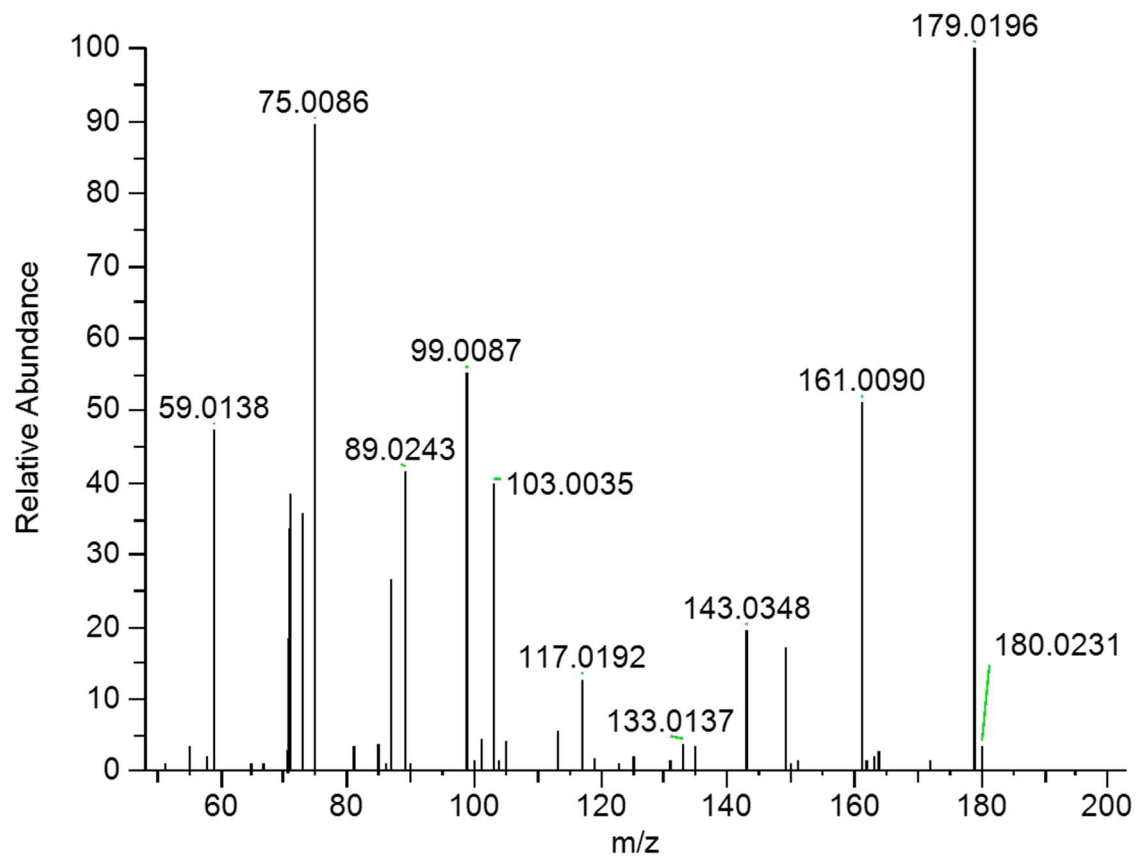
NL: 1.21E9



UHPLC-Q-Exactive Orbitrap MS identification results of the main chemical components in the extract of *Gleditsiae Spina*. A total ion current graph in positive ion and negative ion mode; B total ion current graph in negative ion and negative ion mode.

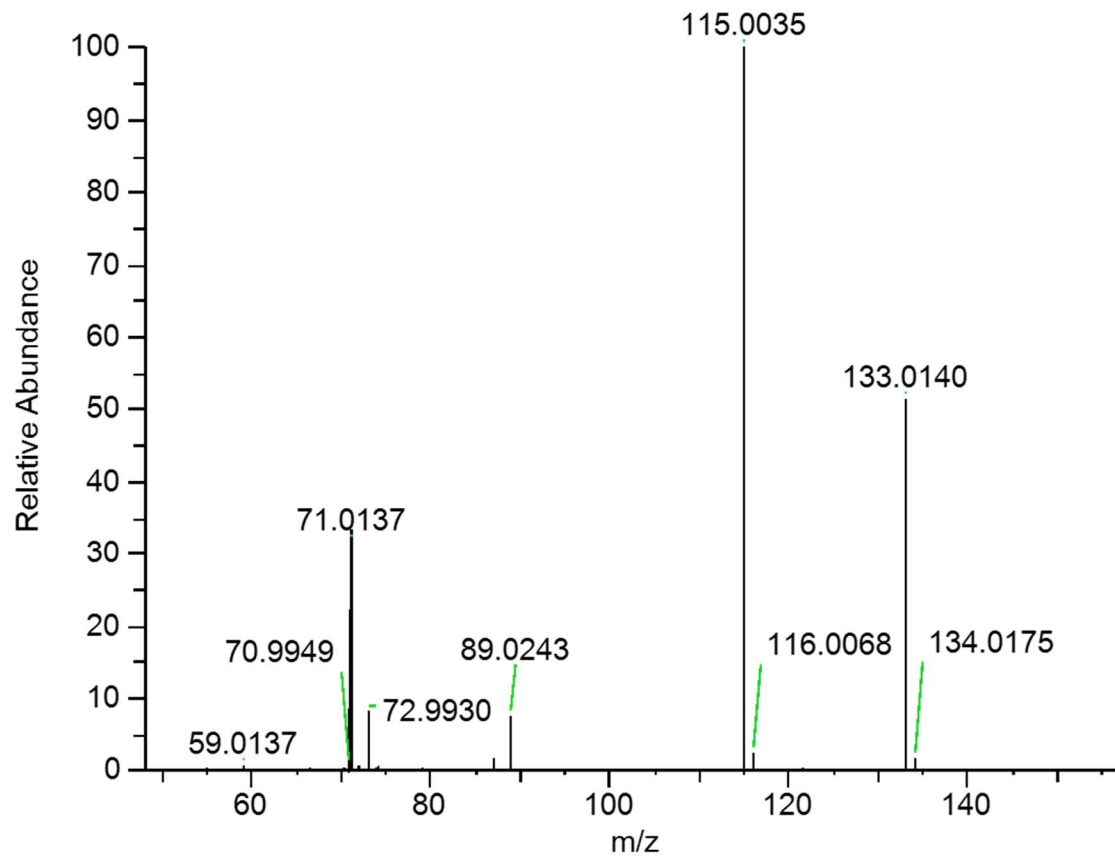
1. D-(+)-Glucose

50jiachu1-neg #524 RT: 1.02 AV: 1 NL: 5.14E+005
T: FTMS - p ESI d Full ms2 179.0557@hcd35.00 [50.0000-200.0000]



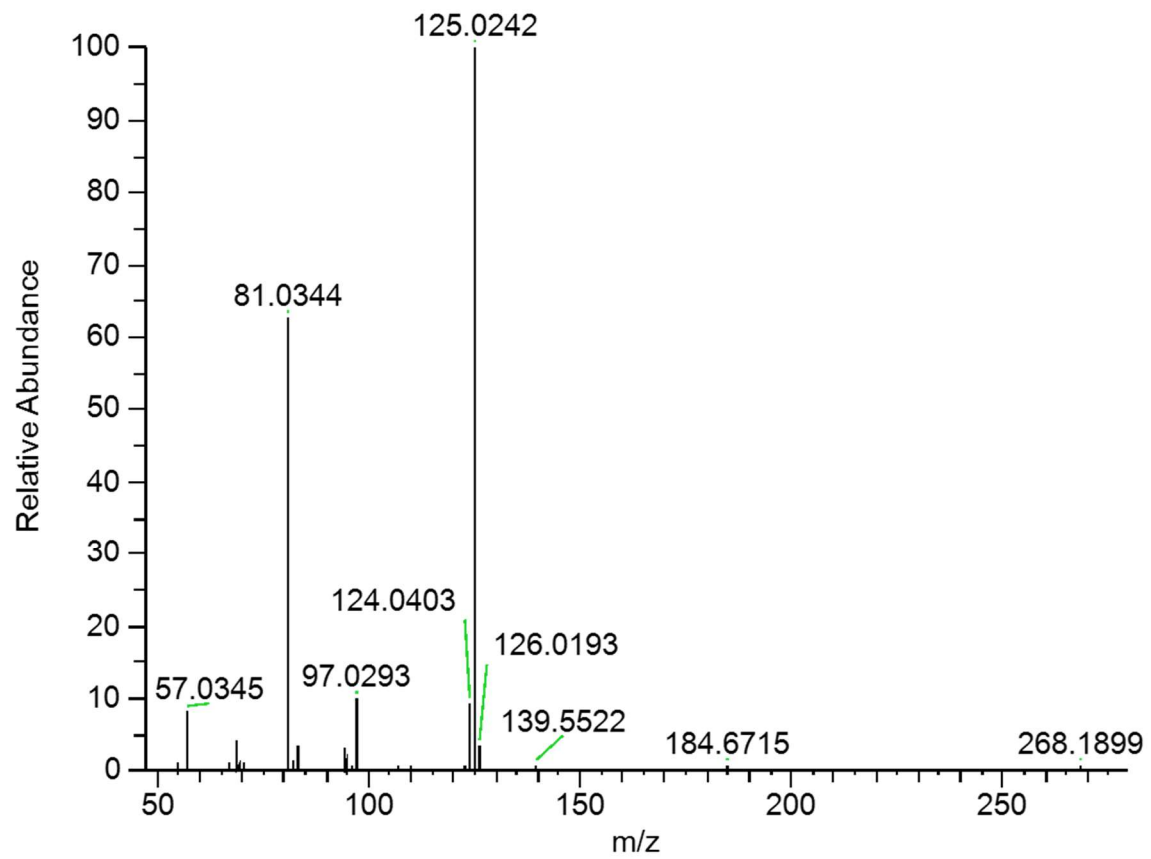
2. DL-Malic acid

50jiachu1-neg #389 RT: 0.81 AV: 1 NL: 2.61E+008
T: FTMS - p ESI d Full ms2 133.0139@hcd35.00 [50.0000-155.0000]



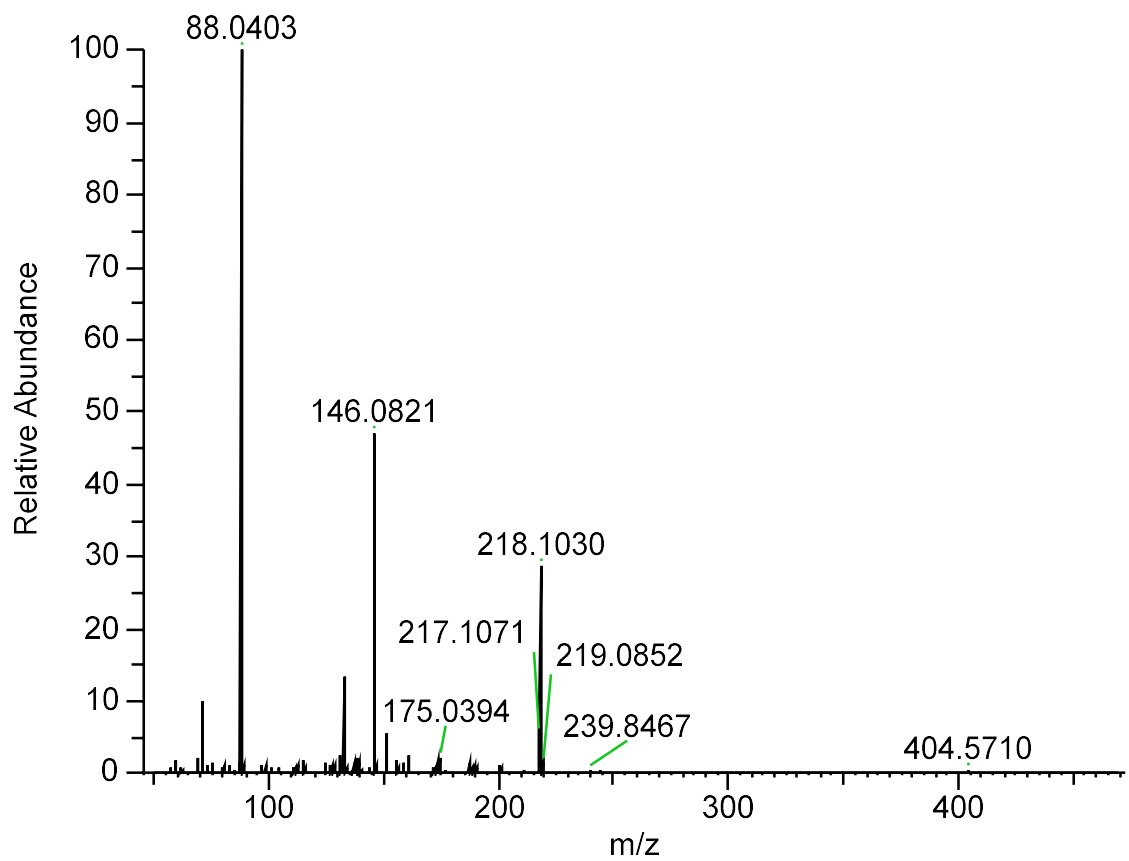
3. Pyrogallol

50jiachu1-neg #886 RT: 1.66 AV: 1 NL: 2.15E+005
T: FTMS - p ESI d Full ms2 125.0242@hcd35.00 [50.0000-275.0000]



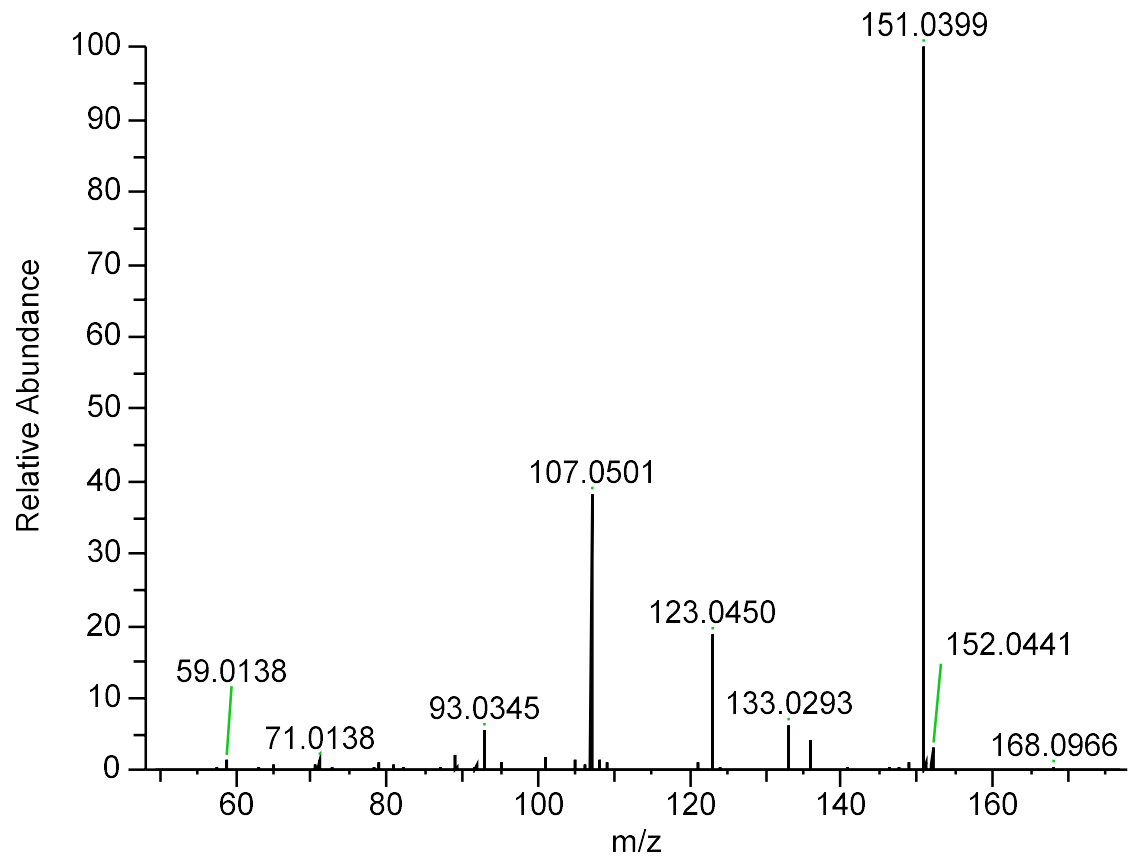
4. Pantothenic acid

50jiachu1-neg #983 RT: 1.85 AV: 1 NL: 4.63E+005
T: FTMS - p ESI d Full ms2 218.1030@hcd35.00 [50.0000-465.0000]



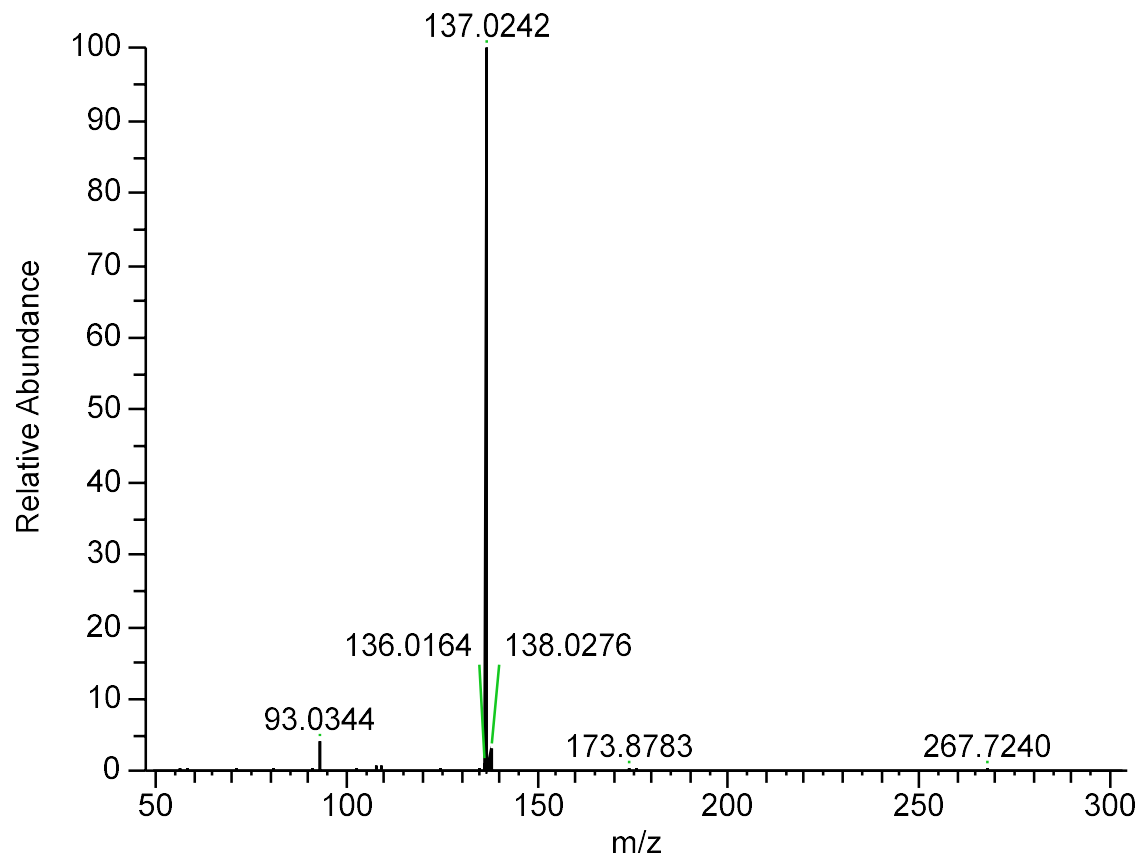
5. 2-Anisic acid

50jiachu1-neg #1510 RT: 2.89 AV: 1 NL: 4.21E+006
T: FTMS - p ESI d Full ms2 151.0398@hcd35.00 [50.0000-175.0000]



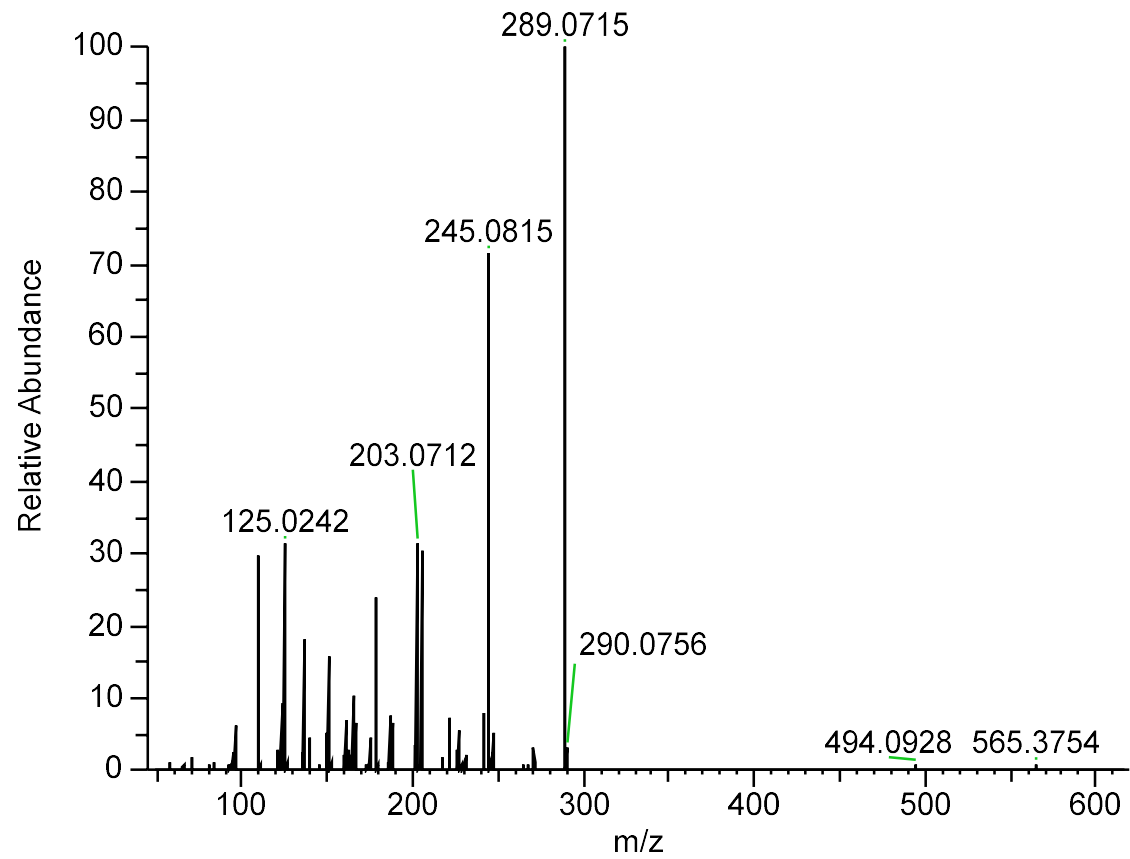
6. Salicylic acid

50jiachu1-neg #1951 RT: 3.79 AV: 1 NL: 2.10E+008
T: FTMS - p ESI d Full ms2 136.9750@hcd35.00 [50.0000-300.0000]



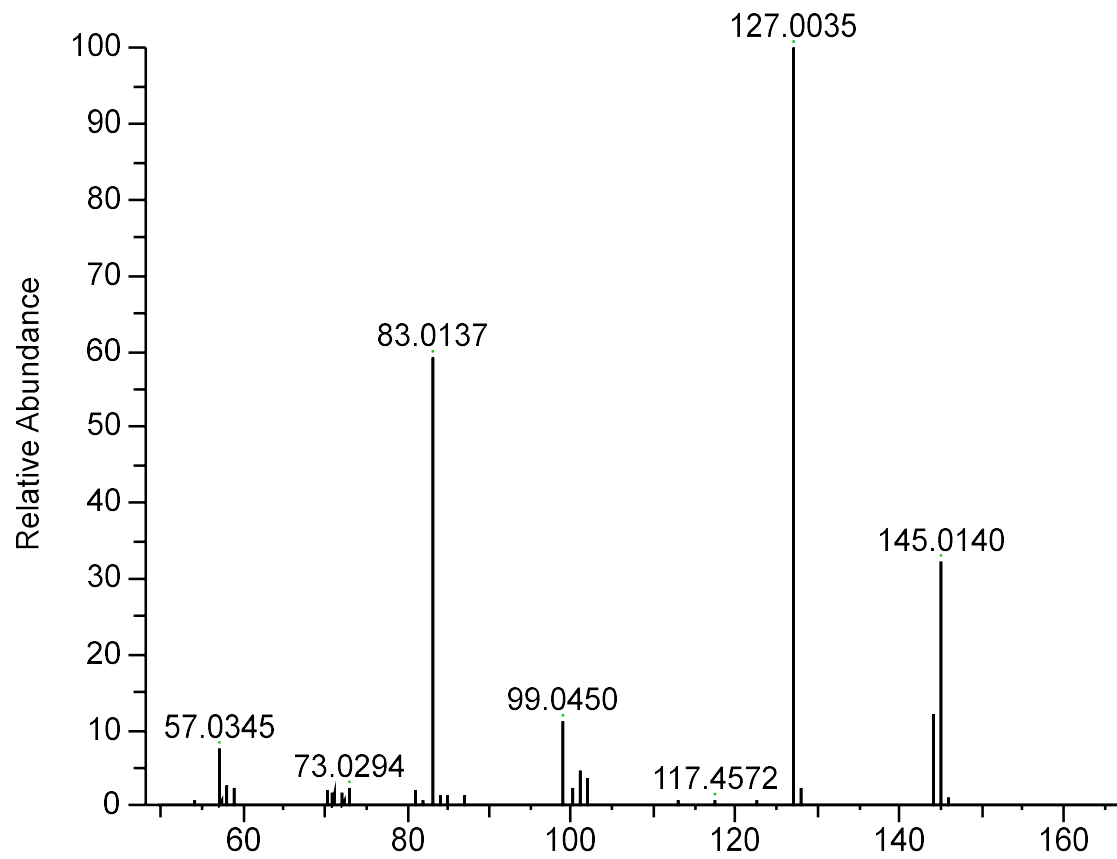
7. Catechin

50jiachu1-neg #2732 RT: 5.36 AV: 1 NL: 6.65E+006
T: FTMS - p ESI d Full ms2 289.1073@hcd35.00 [50.0000-610.0000]



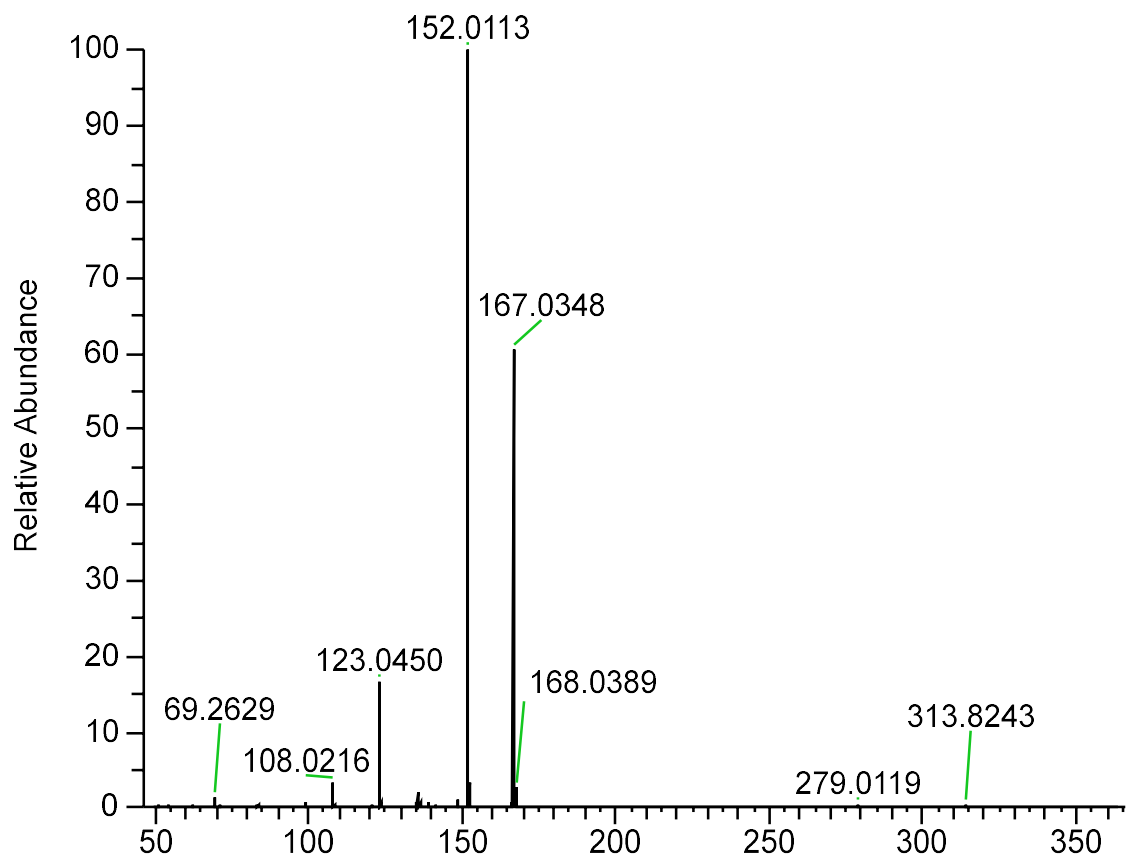
8. Adipic acid

50jiachu1-neg #729 RT: 1.37 AV: 1 NL: 7.67E+005
T: FTMS - p ESI d Full ms2 145.0140@hcd35.00 [50.0000-165.0000]



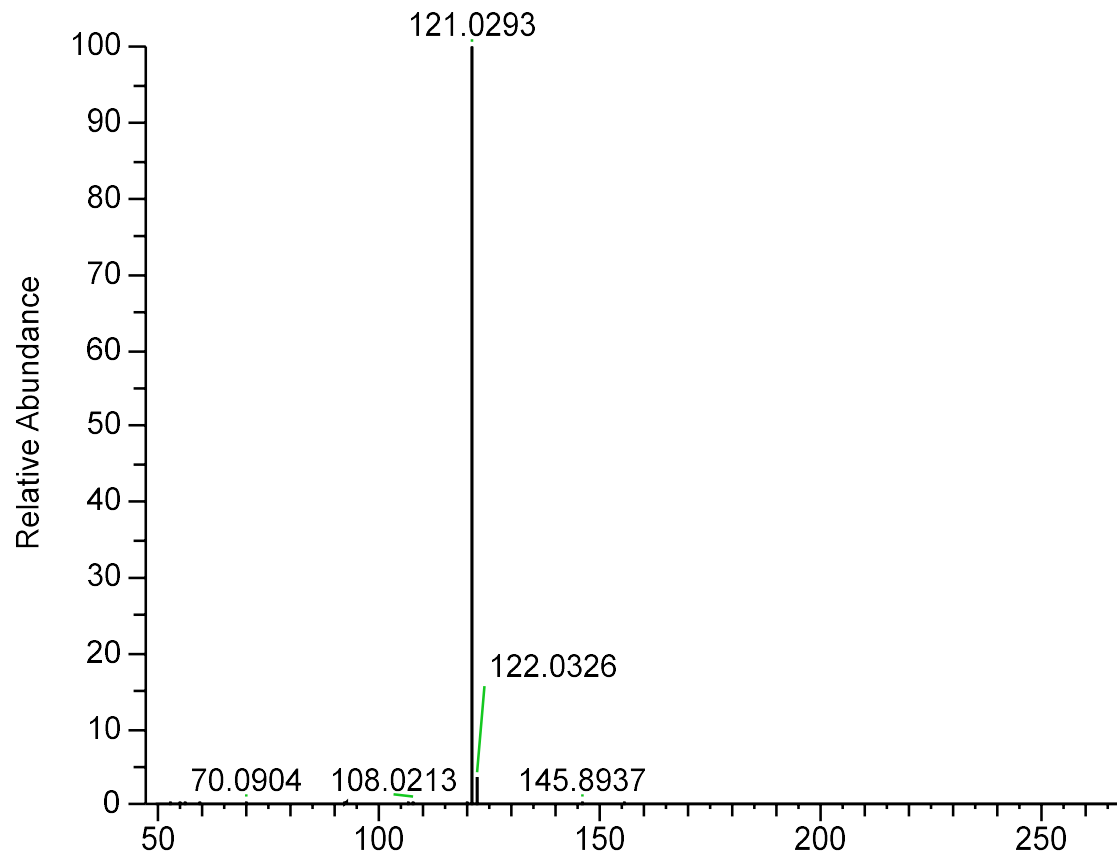
9. Vanillic acid

50jiachu1-neg #2745 RT: 5.39 AV: 1 NL: 2.88E+006
T: FTMS - p ESI d Full ms2 167.0710@hcd35.00 [50.0000-360.0000]



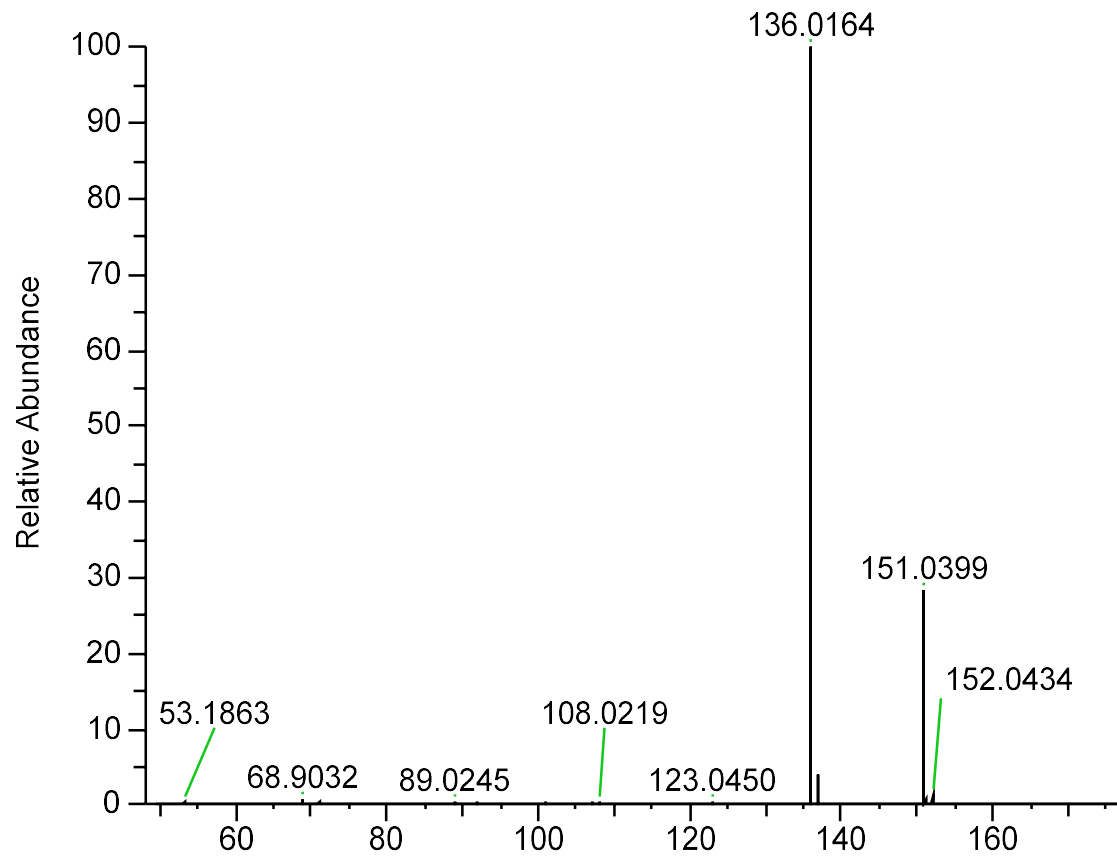
10. Benzoic acid

50jiachu1-neg #3232 RT: 6.37 AV: 1 NL: 1.50E+008
T: FTMS - p ESI d Full ms2 120.9871@hcd35.00 [50.0000-265.0000]



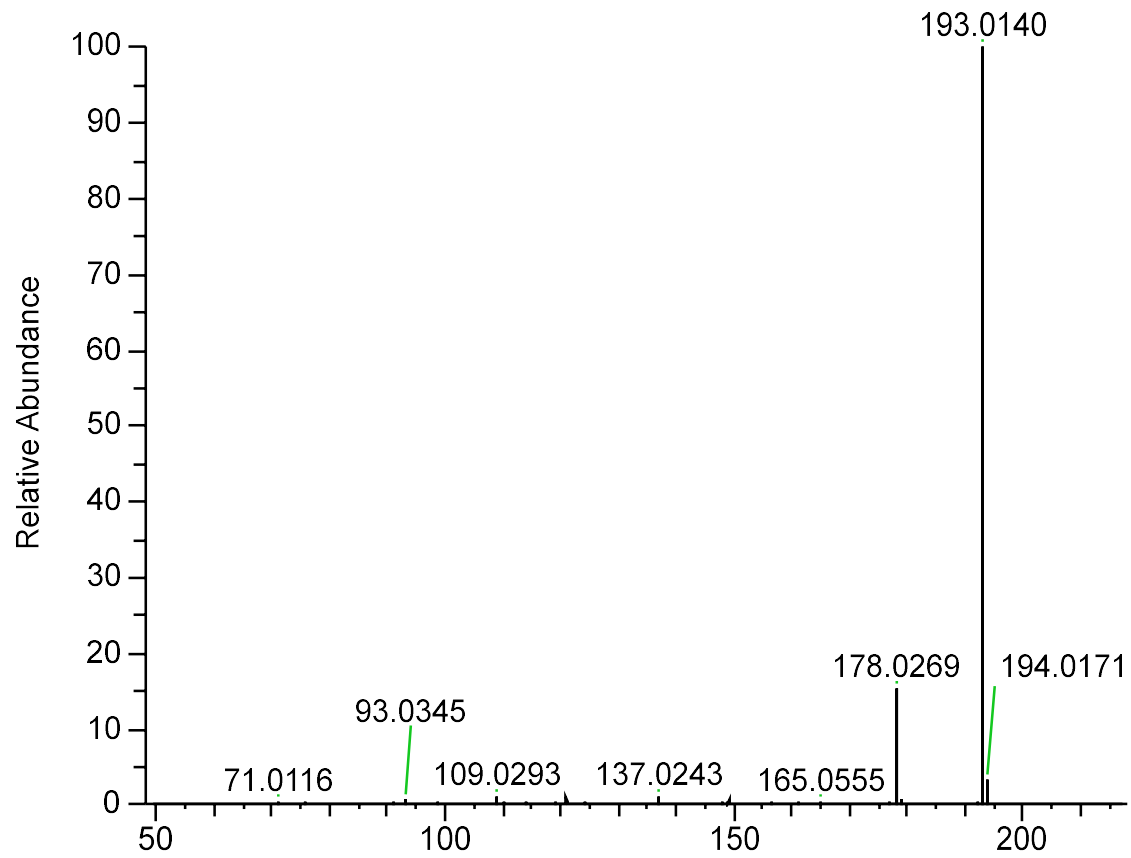
11. Vanillin

50jiachu1-neg #4347 RT: 8.55 AV: 1 NL: 2.11E+007
T: FTMS - p ESI d Full ms2 151.0398@hcd35.00 [50.0000-175.0000]



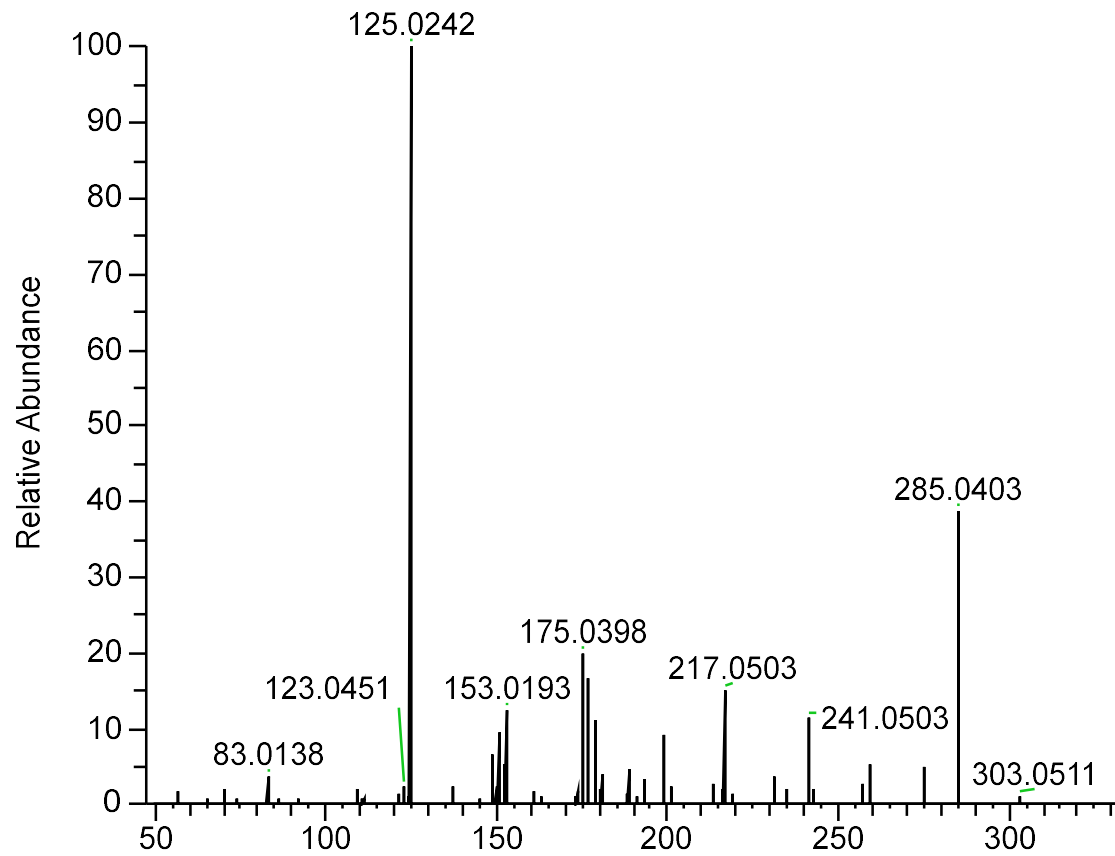
12. Ferulic acid

50jiachu1-neg #4743 RT: 9.28 AV: 1 NL: 1.30E+007
T: FTMS - p ESI d Full ms2 193.0139@hcd35.00 [50.0000-215.0000]



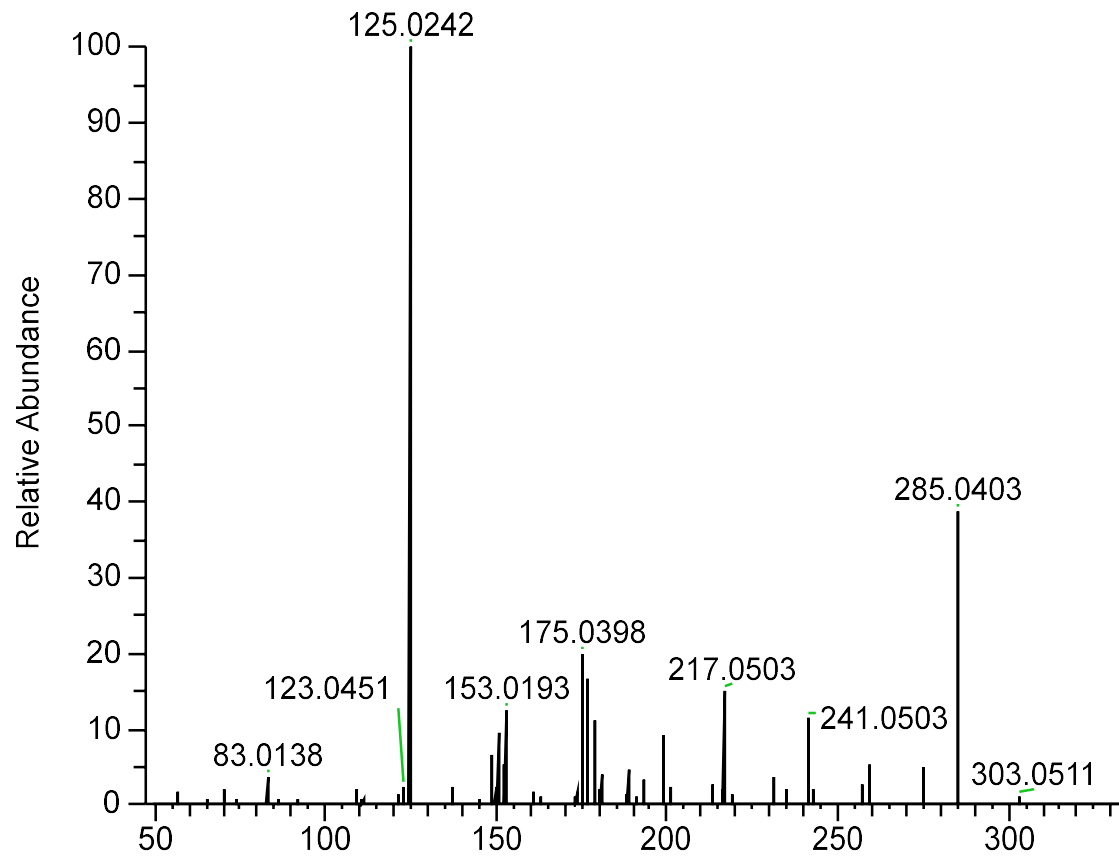
13. Dihydrorobinetin

50jiachu1-neg #5634 RT: 10.88 AV: 1 NL: 2.27E+008
T: FTMS - p ESI d Full ms2 303.0505@hcd35.00 [50.0000-330.0000]



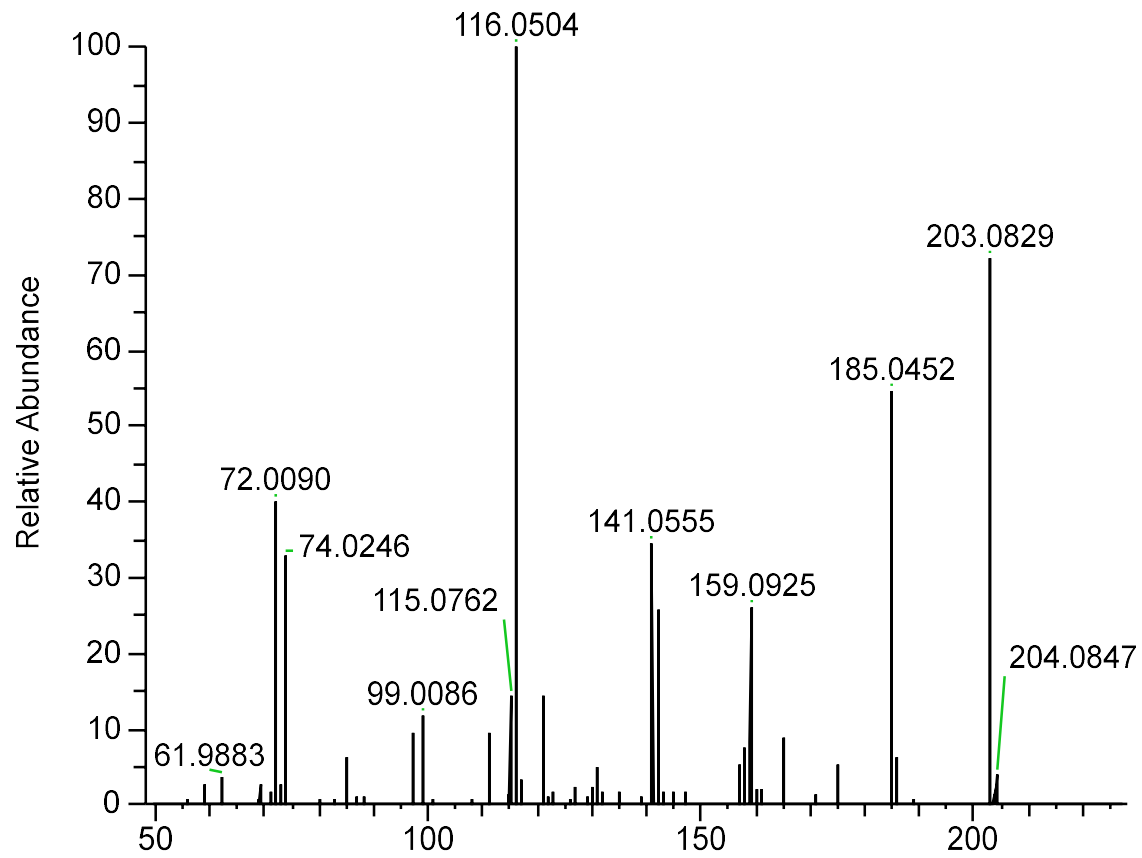
14. Phloroglucinol

50jiachu1-neg #5634 RT: 10.88 AV: 1 NL: 2.27E+008
T: FTMS - p ESI d Full ms2 303.0505@hcd35.00 [50.0000-330.0000]



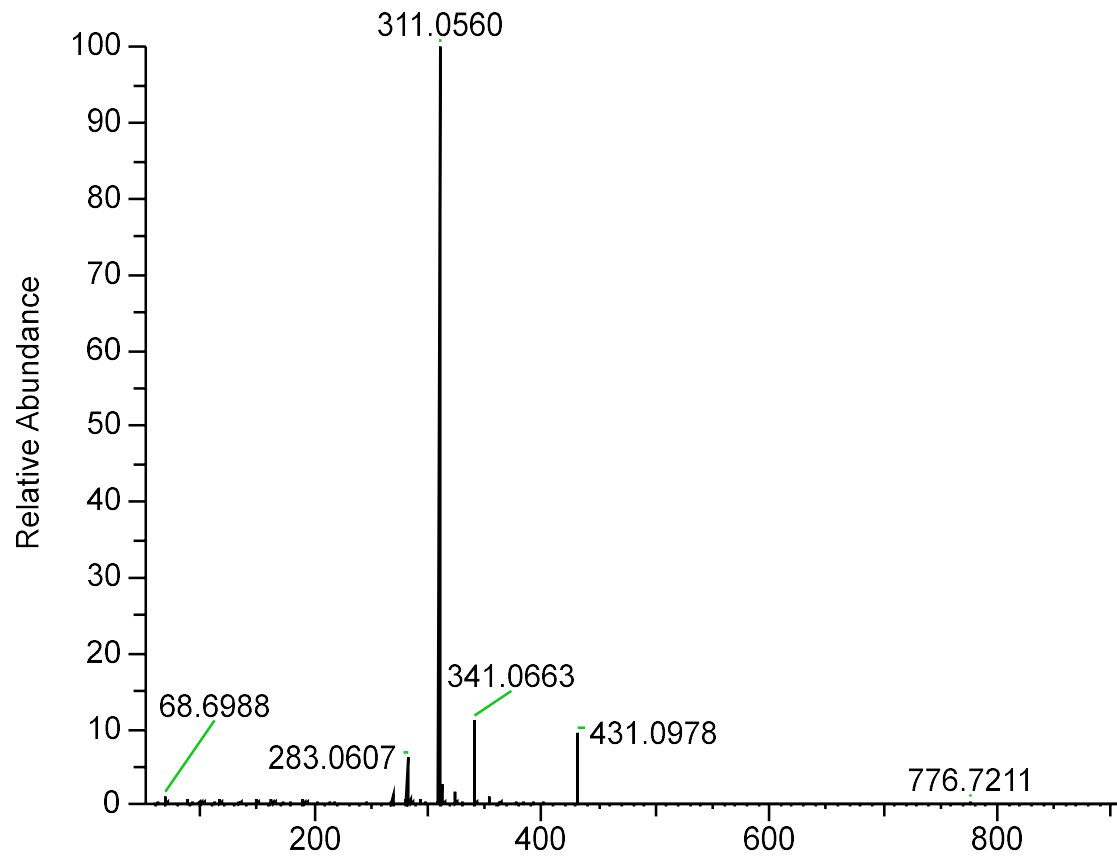
15. D-(+)-Tryptophan

50jiachu1-neg #1778 RT: 3.43 AV: 1 NL: 2.74E+005
T: FTMS - p ESI d Full ms2 203.0823@hcd35.00 [50.0000-225.0000]



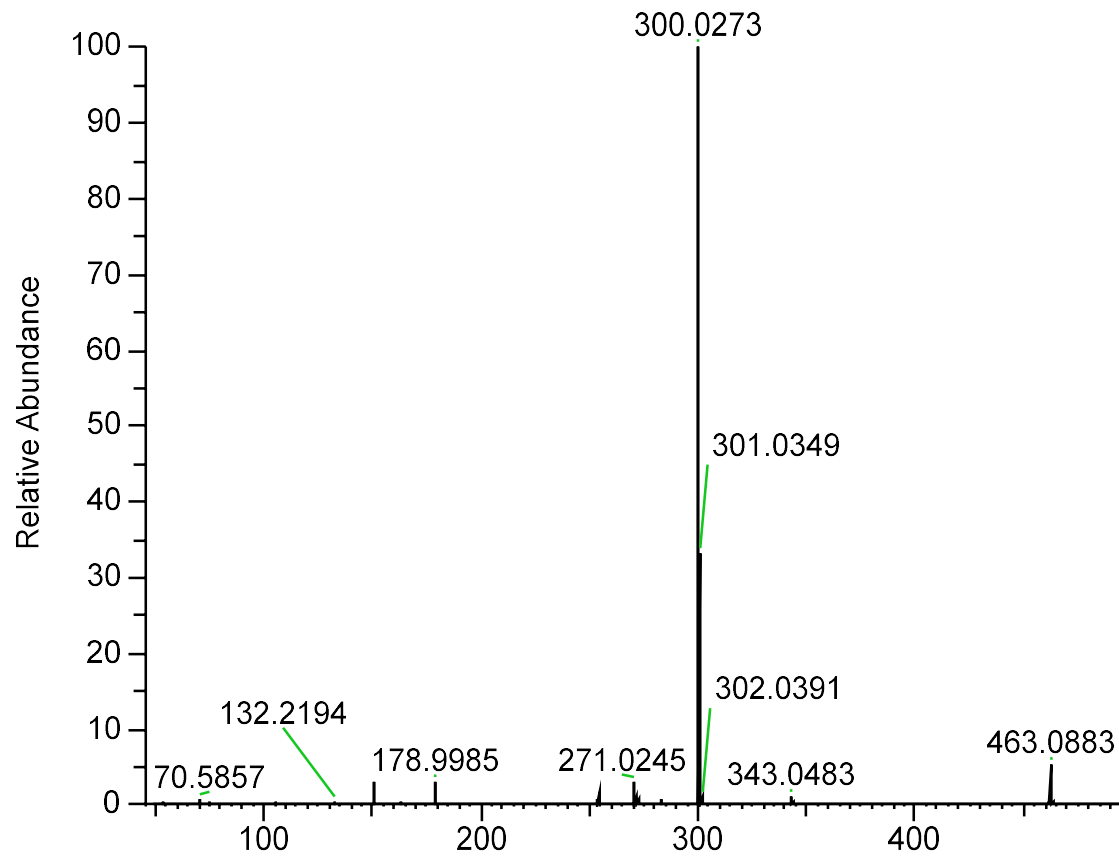
16. Isovitexin

50jiachu1-neg #5736 RT: 11.05 AV: 1 NL: 5.30E+006
T: FTMS - p ESI d Full ms2 431.0979@hcd35.00 [60.0000-900.0000]



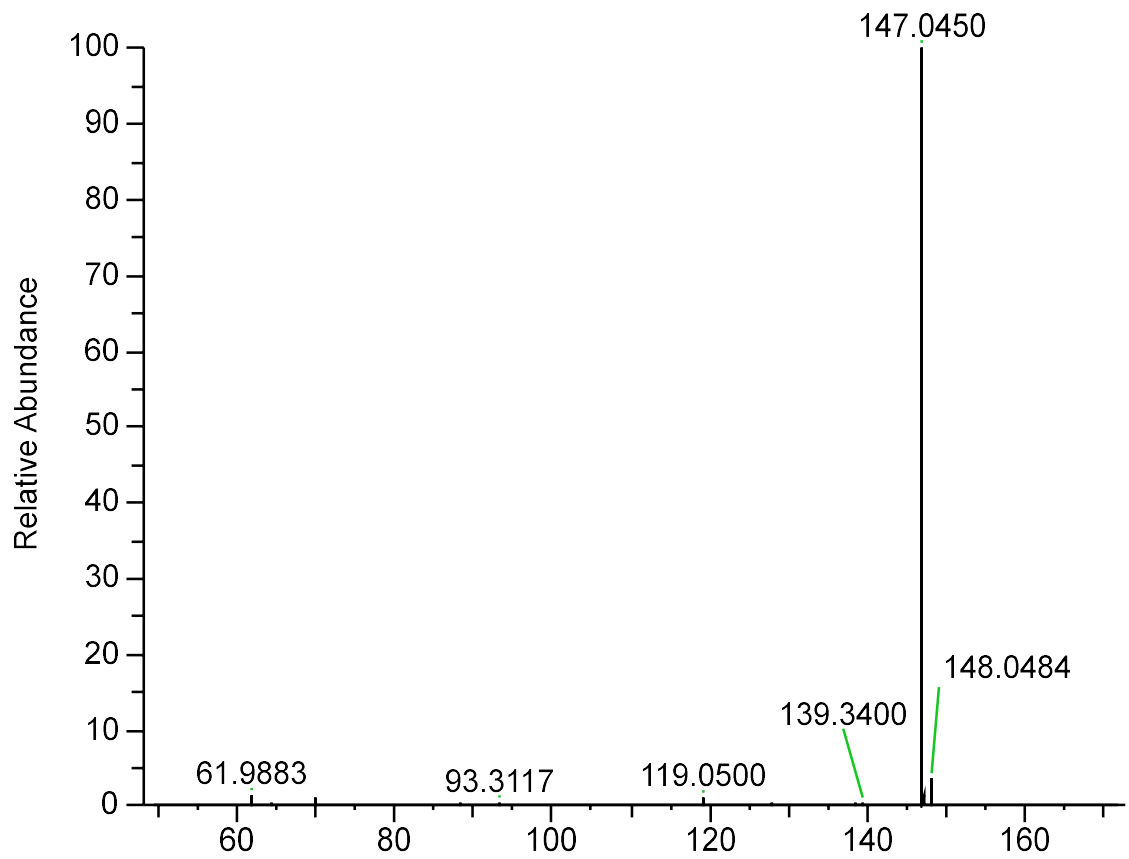
17. Quercetin-3-O-glucoside

50jiachu1-neg #5821 RT: 11.20 AV: 1 NL: 7.50E+007
T: FTMS - p ESI d Full ms2 463.0876@hcd35.00 [50.0000-490.0000]



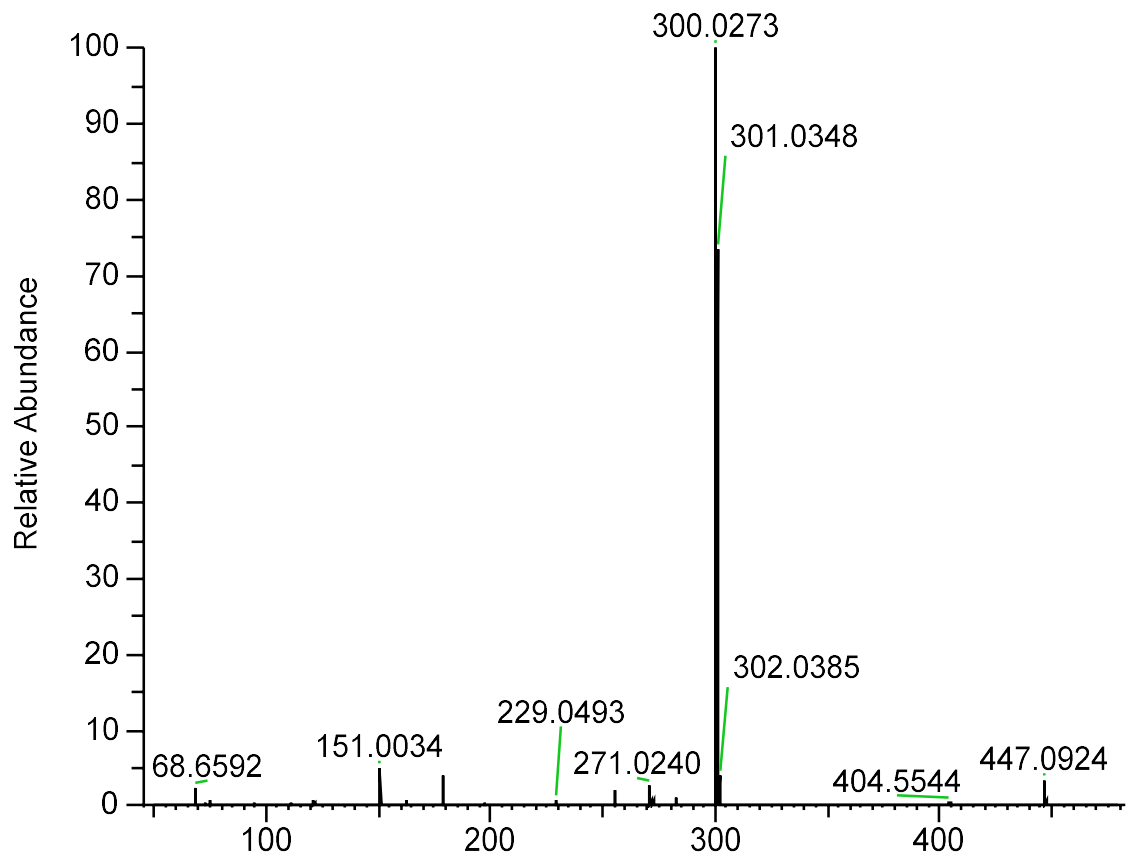
18. trans-Cinnamic acid

50jiachu1-neg #5535 RT: 10.71 AV: 1 NL: 5.97E+007
T: FTMS - p ESI d Full ms2 147.0449@hcd35.00 [50.0000-170.0000]



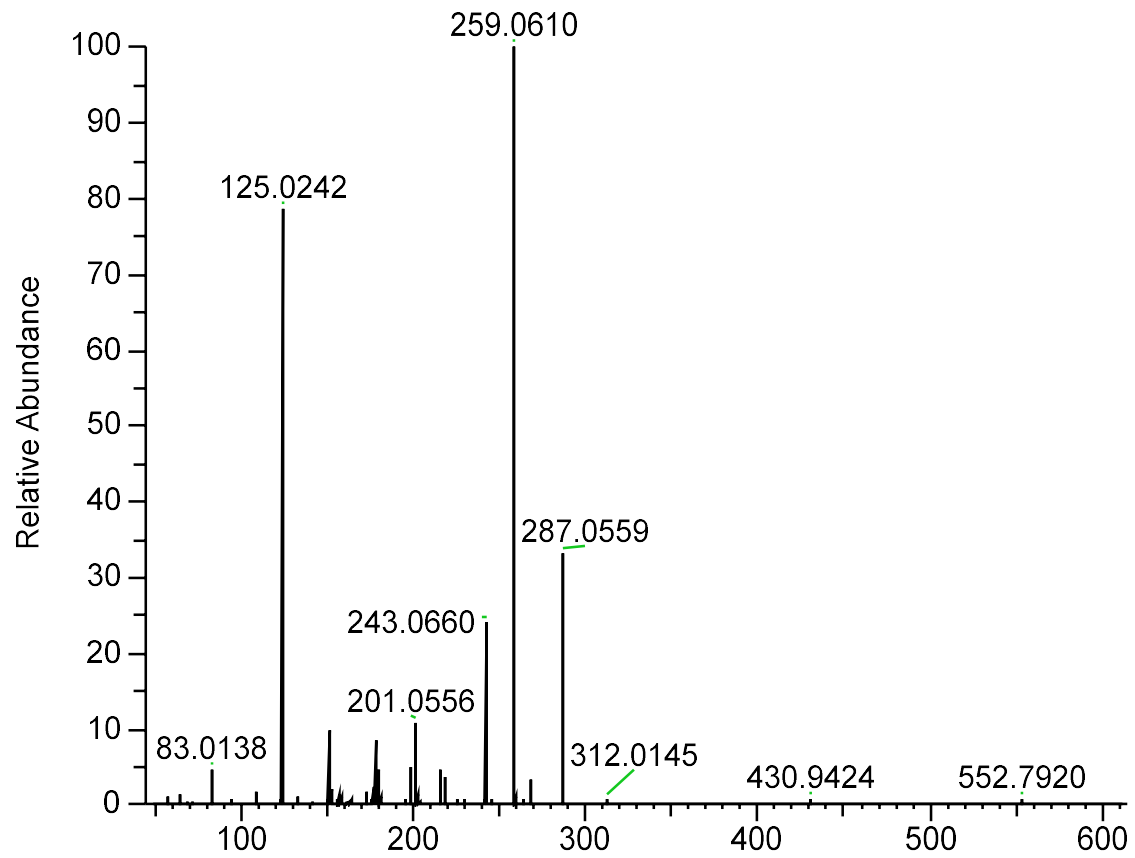
19. Isoorientin

50jiachu1-neg #6690 RT: 12.76 AV: 1 NL: 5.02E+007
T: FTMS - p ESI d Full ms2 447.0926@hcd35.00 [50.0000-475.0000]



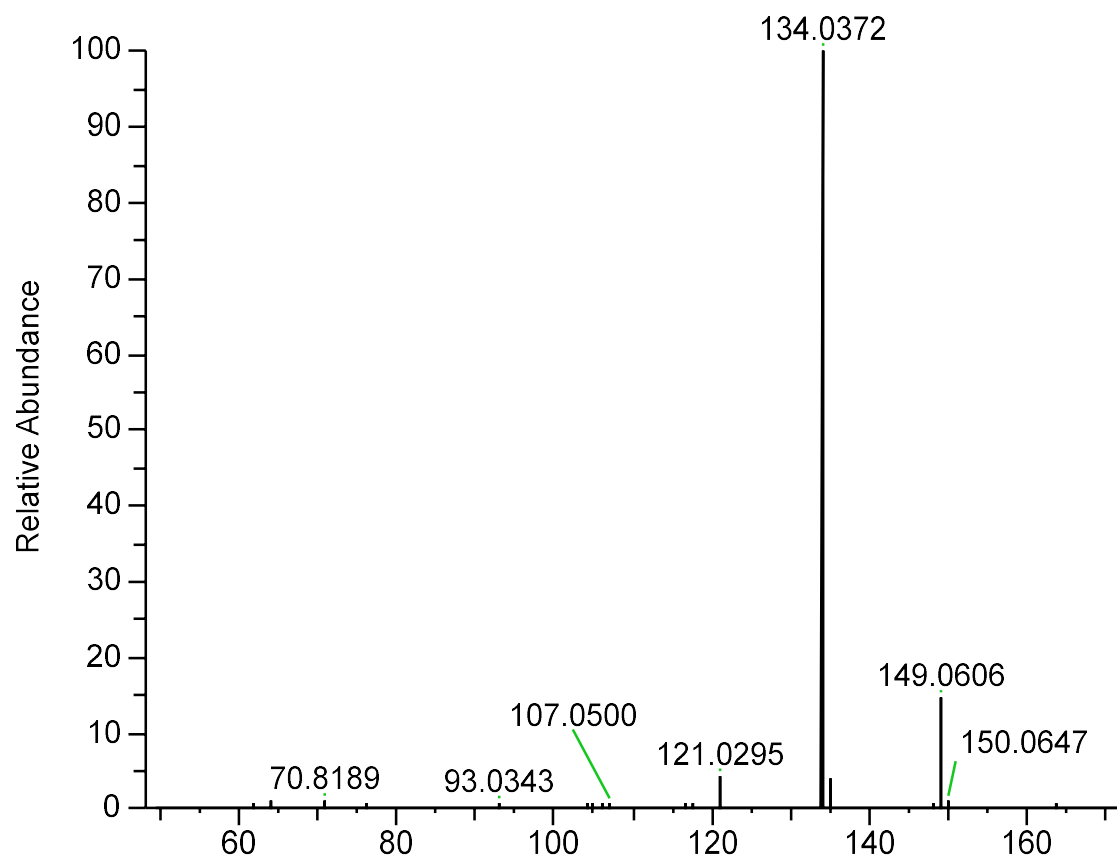
20. Fustin

50jiachu1-neg #6729 RT: 12.83 AV: 1 NL: 3.05E+007
T: FTMS - p ESI d Full ms2 286.9021@hcd35.00 [50.0000-605.0000]



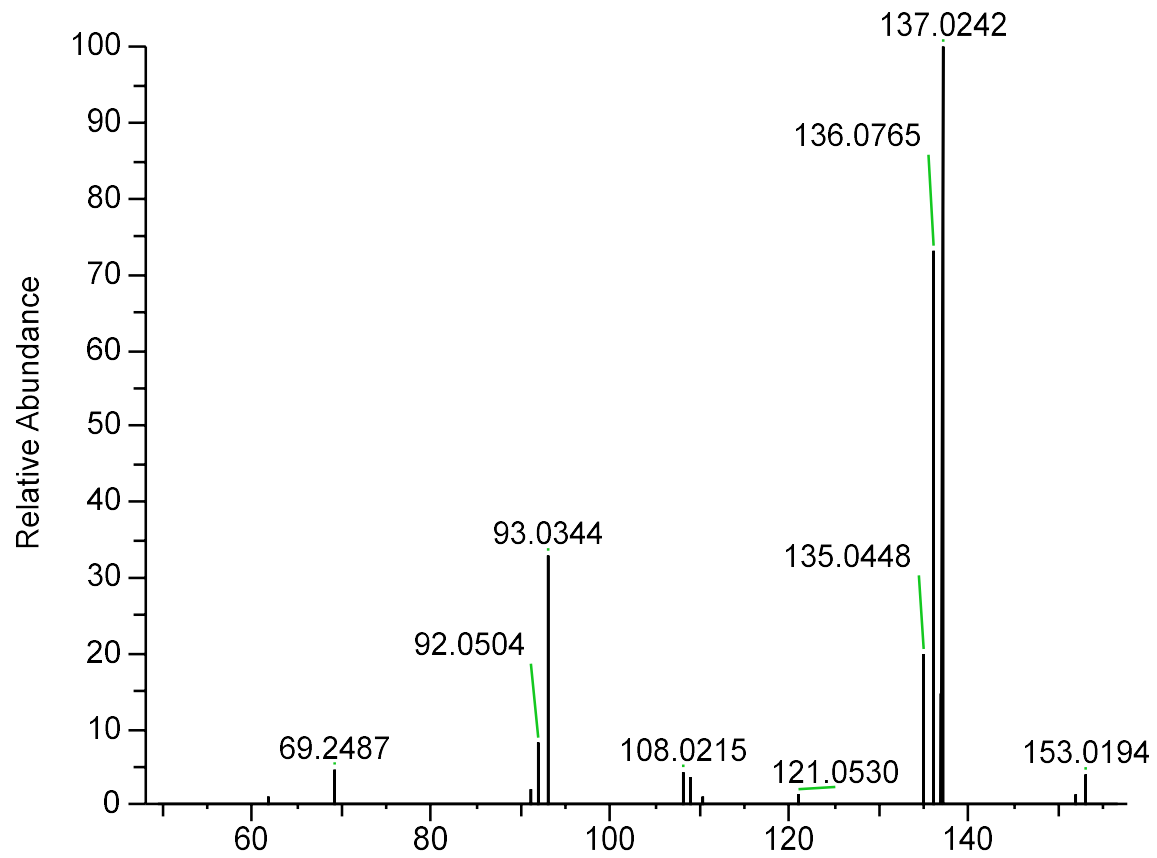
21. Hydrocinnamic acid

50jiachu1-neg #1336 RT: 2.53 AV: 1 NL: 9.07E+005
T: FTMS - p ESI d Full ms2 149.0605@hcd35.00 [50.0000-170.0000]



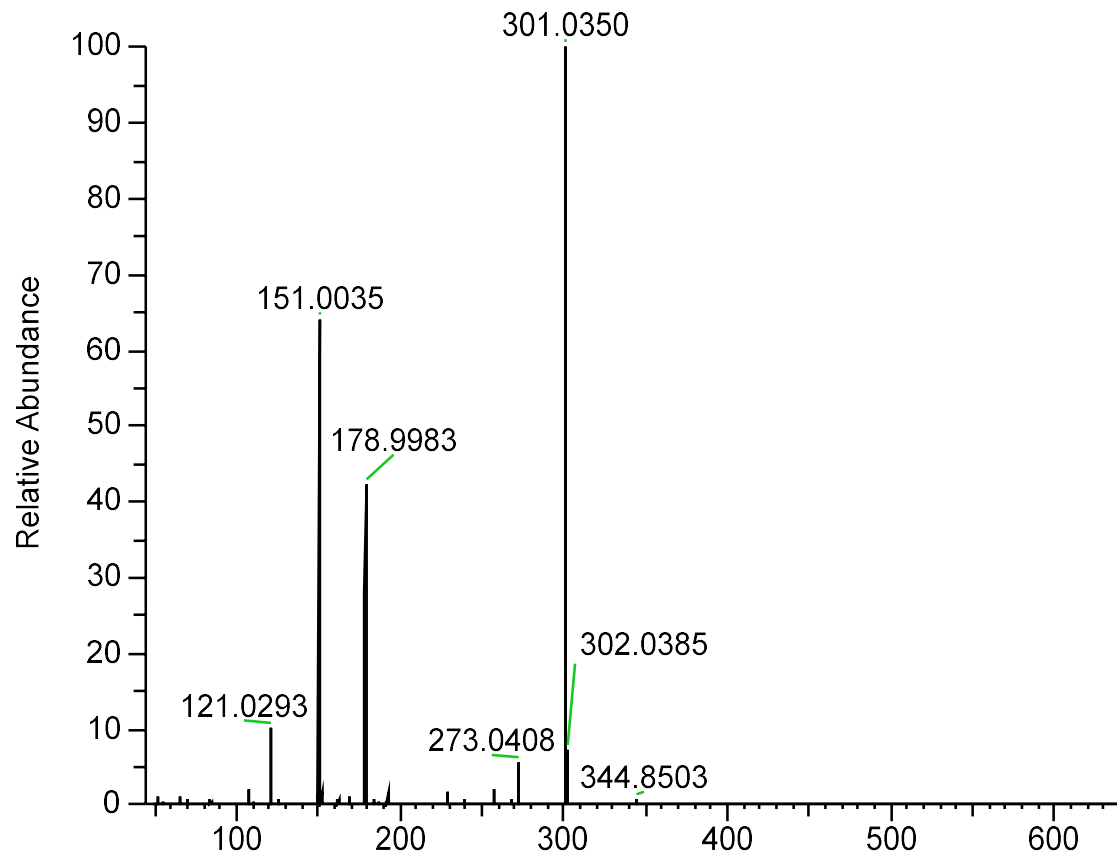
22. Tyramine

50jiachu1-neg #8139 RT: 15.60 AV: 1 NL: 1.81E+005
T: FTMS - p ESI d Full ms2 136.0764@hcd35.00 [50.0000-155.0000]



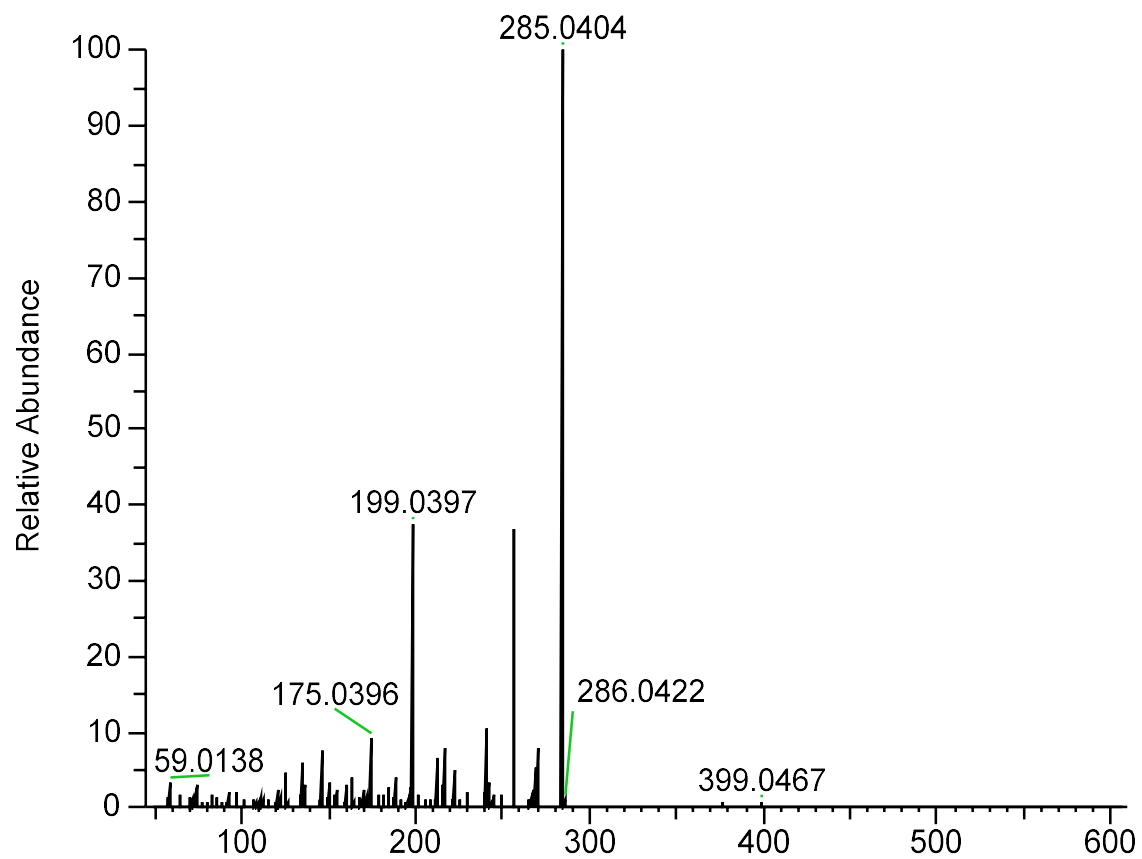
23. Robinetin

50jiachu1-neg #8199 RT: 15.71 AV: 1 NL: 8.45E+007
T: FTMS - p ESI d Full ms2 301.2033@hcd35.00 [50.0000-635.0000]



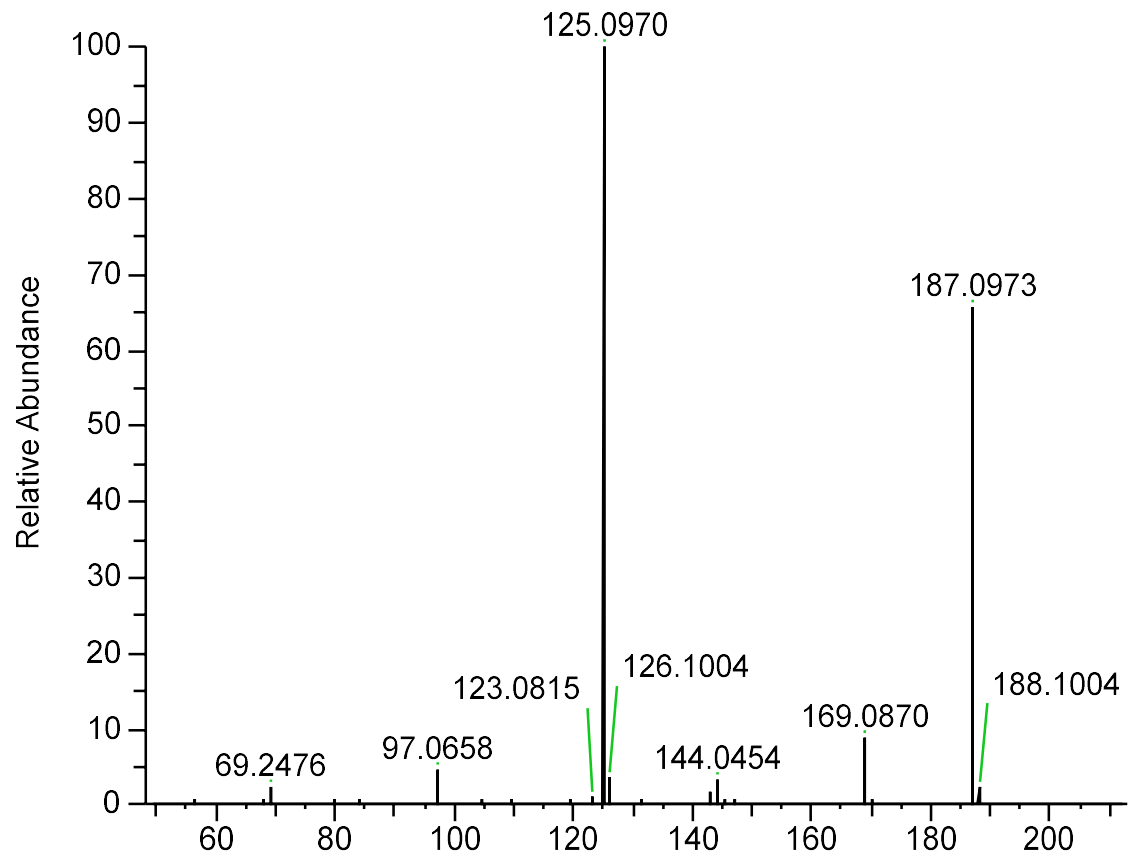
24. Luteolin

50jiachu1-neg #7997 RT: 15.31 AV: 1 NL: 2.00E+005
T: FTMS - p ESI d Full ms2 285.0399@hcd35.00 [50.0000-600.0000]



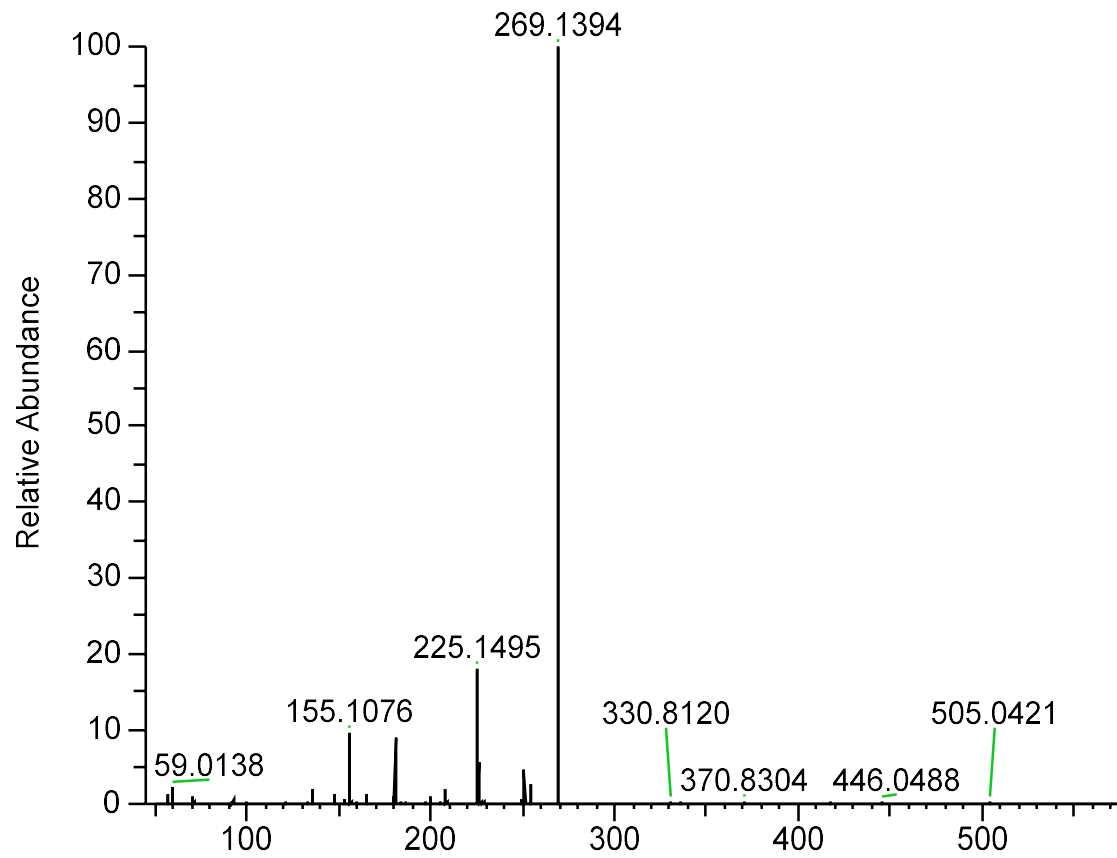
25. Azelaic acid

50jiachu1-neg #6998 RT: 13.31 AV: 1 NL: 6.01E+006
T: FTMS - p ESI d Full ms2 187.0972@hcd35.00 [50.0000-210.0000]



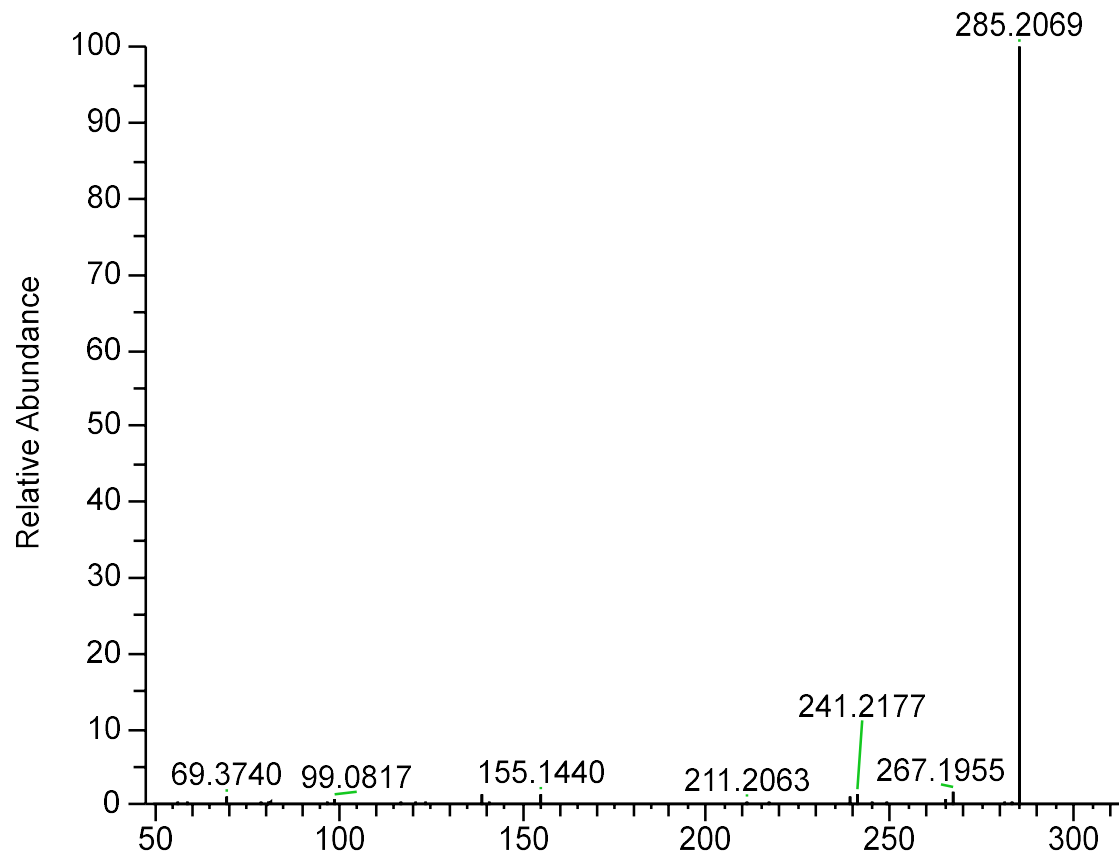
26. Genistein

50jiachu1-neg #9194 RT: 17.81 AV: 1 NL: 2.53E+006
T: FTMS - p ESI d Full ms2 269.0811@hcd35.00 [50.0000-570.0000]



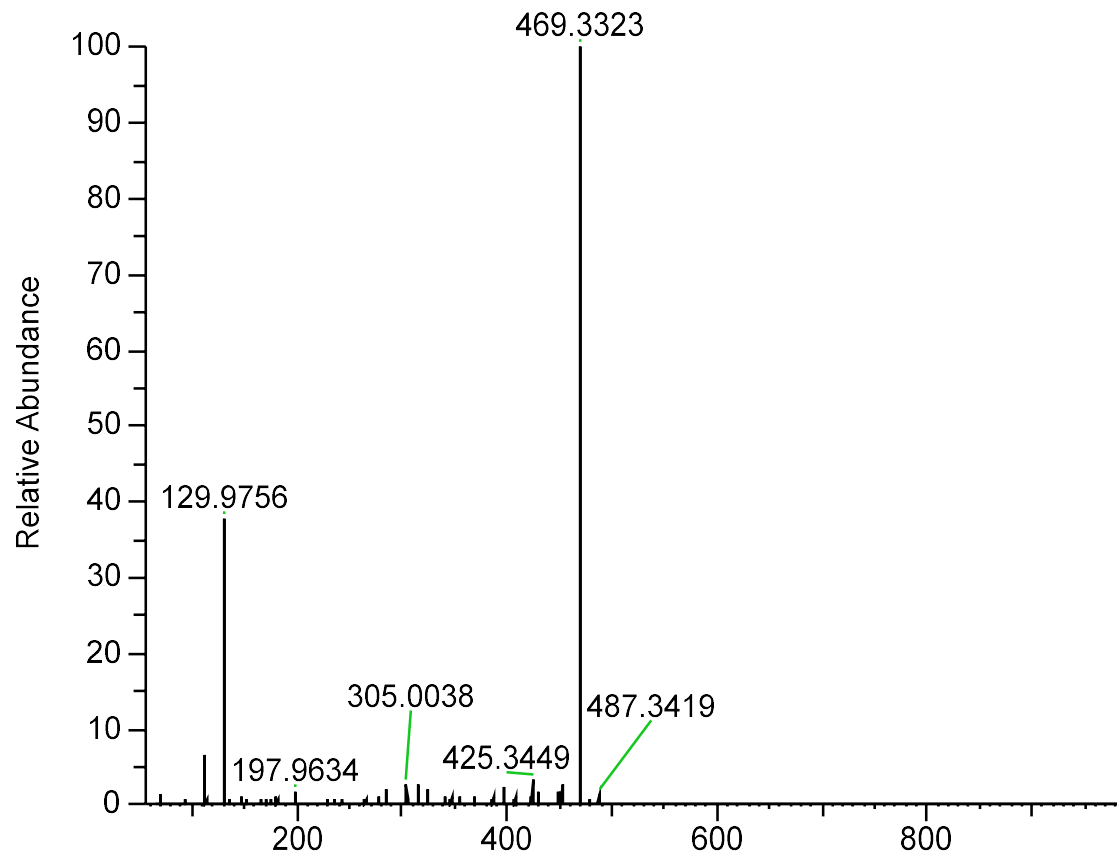
27. Hexadecanedioic acid

50jiachu1-neg #10958 RT: 21.73 AV: 1 NL: 9.79E+006
T: FTMS - p ESI d Full ms2 285.2067@hcd35.00 [50.0000-310.0000]



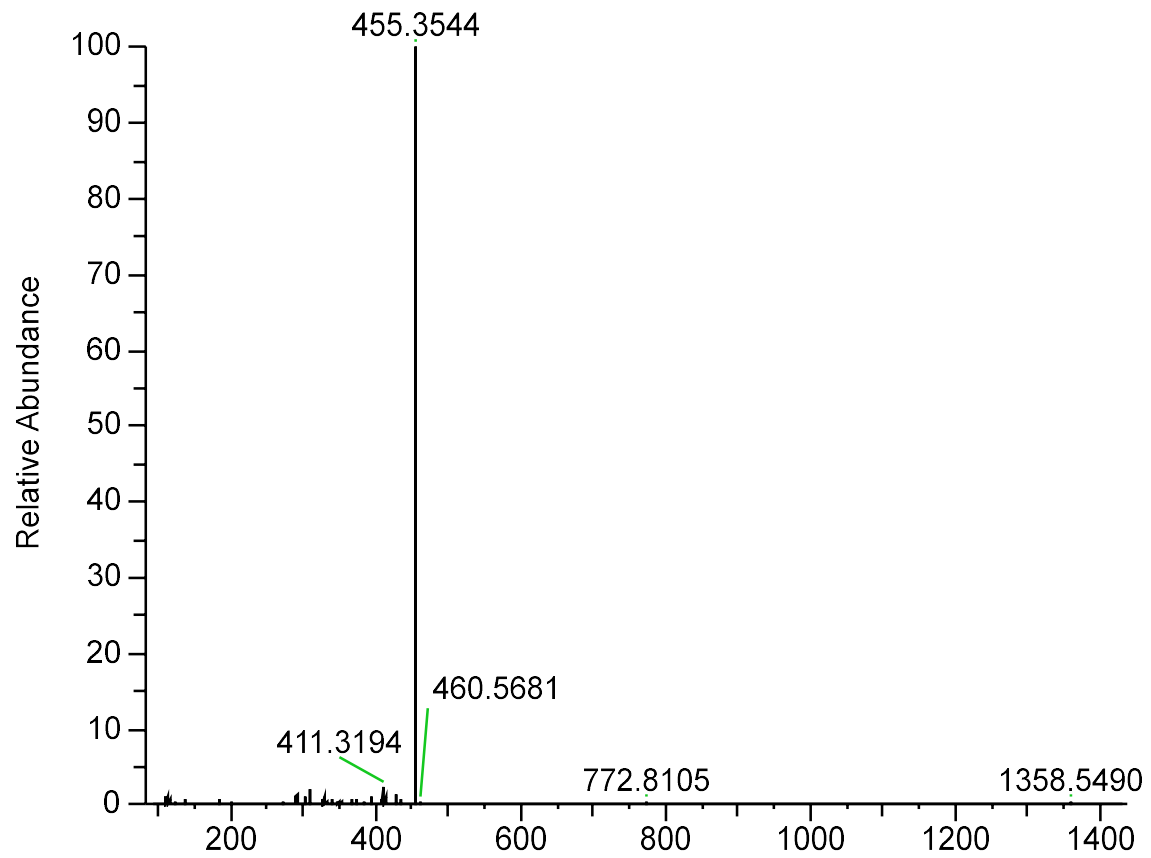
28. 18-β-Glycyrrhetic acid

50jiachu1-neg #18276 RT: 38.46 AV: 1 NL: 2.39E+005
T: FTMS - p ESI d Full ms2 469.3317@hcd35.00 [65.0000-975.0000]



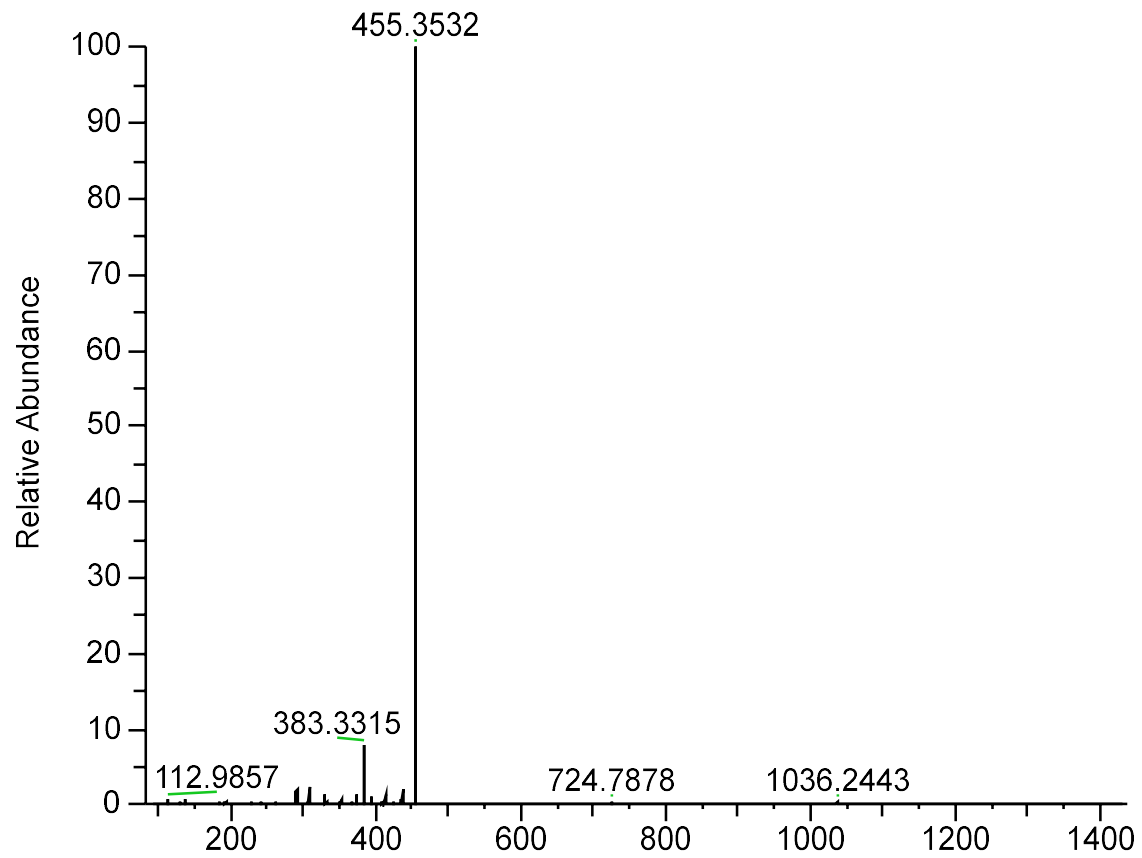
29. Ursolic acid

50jiachu1-neg #19041 RT: 40.21 AV: 1 NL: 5.28E+005
T: FTMS - p ESI d Full ms2 455.3528@hcd35.00 [94.3333-1415.0000]



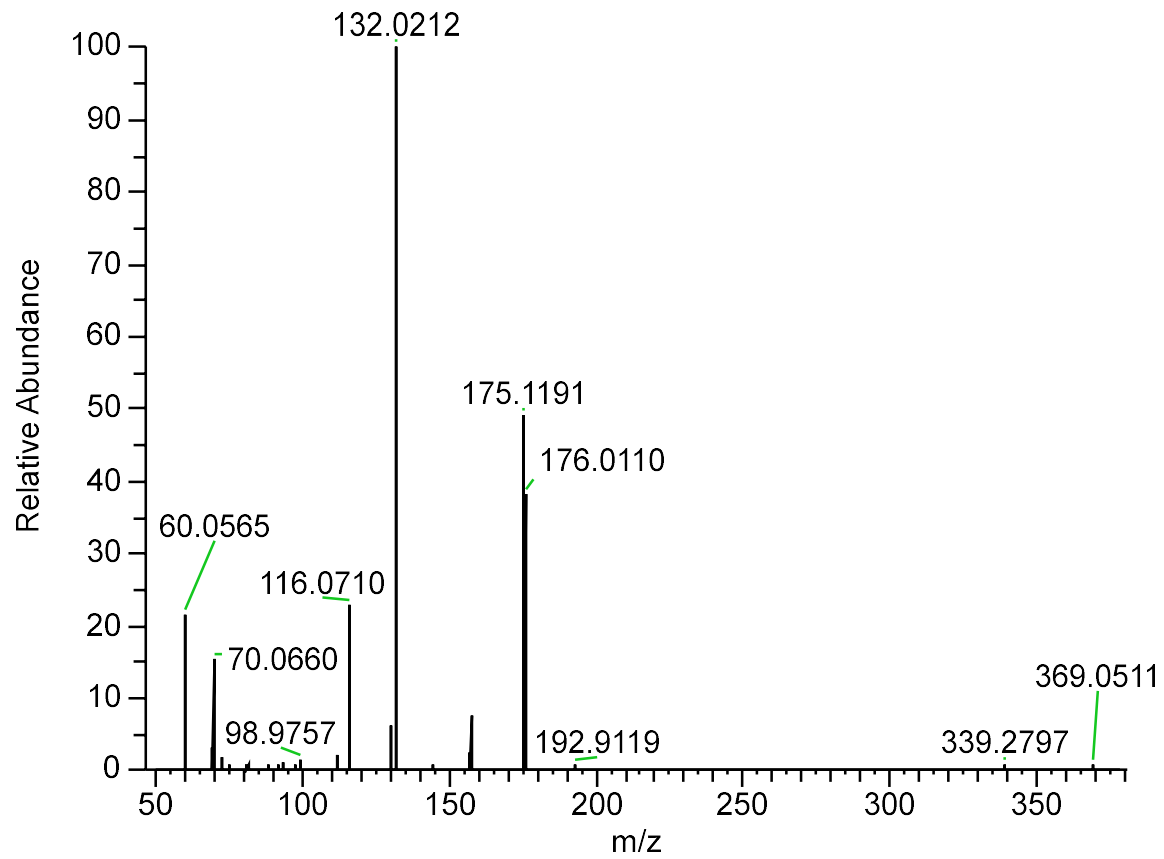
30. Oleanolic acid

50jiachu1-neg #20622 RT: 43.84 AV: 1 NL: 5.99E+005
T: FTMS - p ESI d Full ms2 455.3524@hcd35.00 [94.3333-1415.0000]



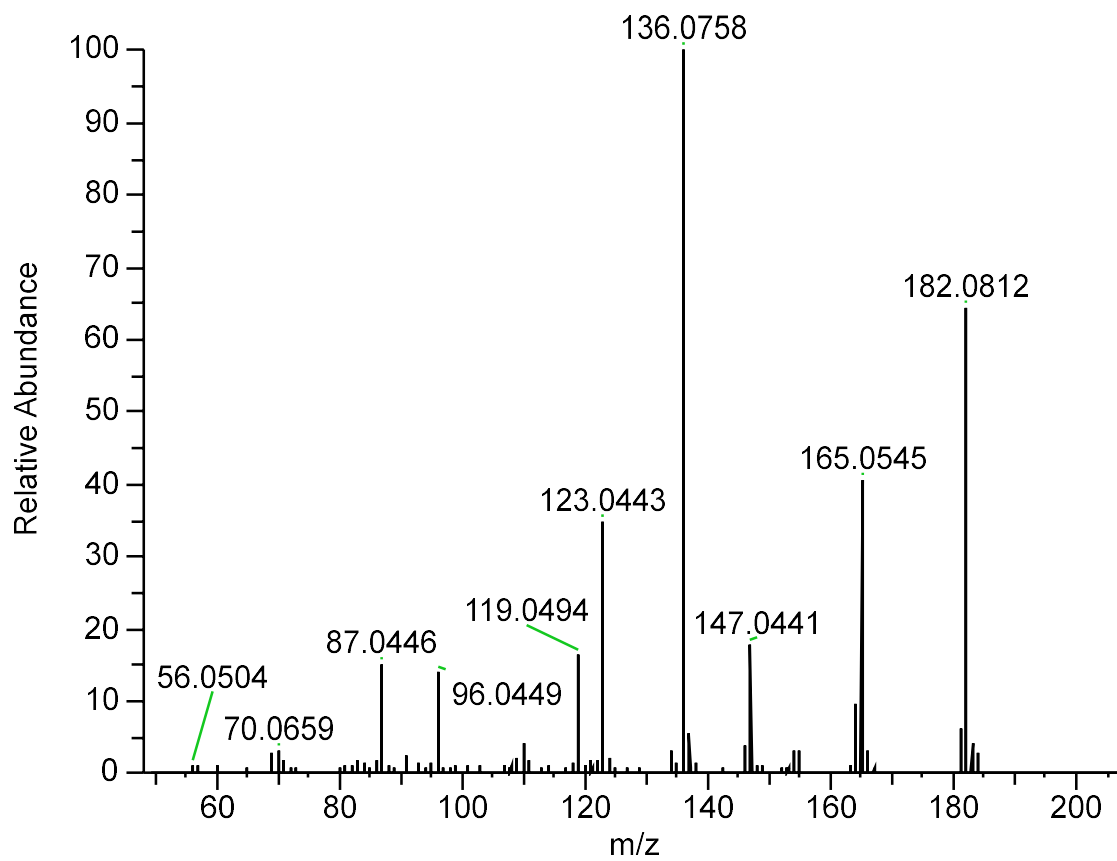
31. L-(+)-Arginine

50jiachu1-pos #354 RT: 0.77 AV: 1 NL: 1.39E+006
T: FTMS + p ESI d Full ms2 174.8961@hcd35.00 [50.0000-375.0000]



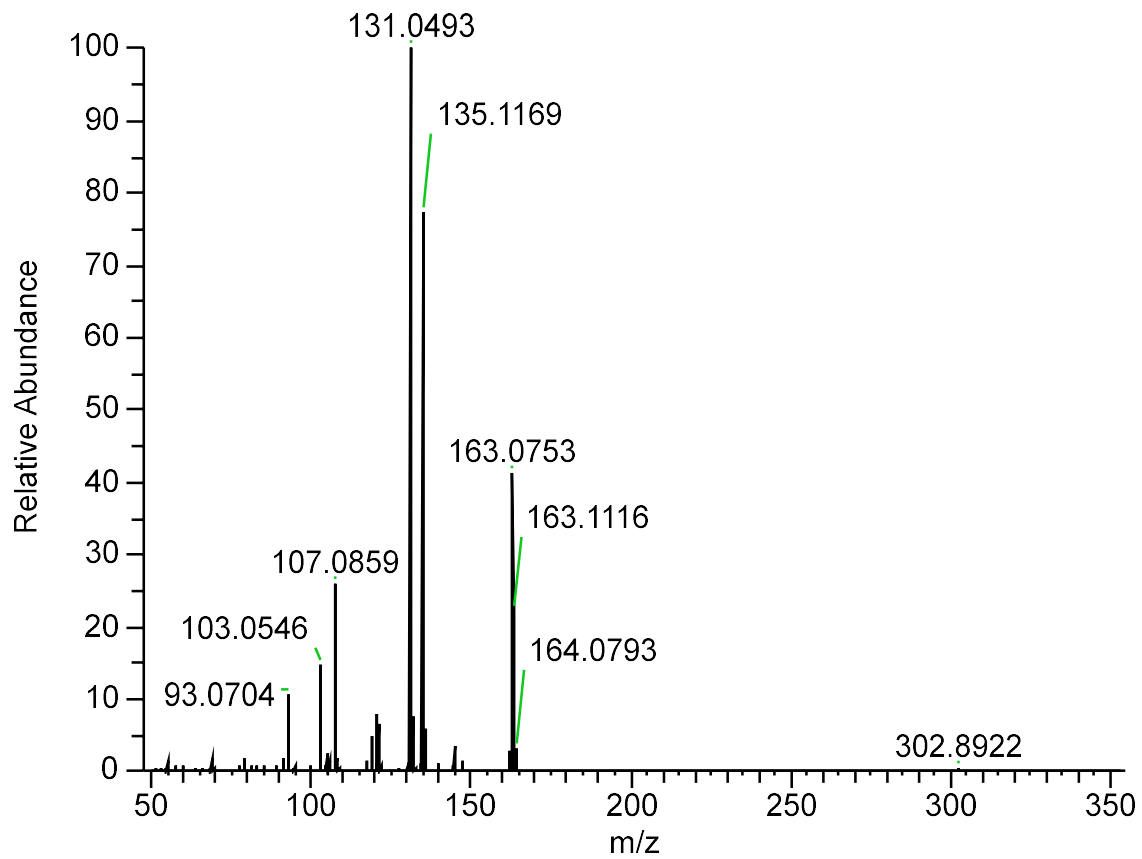
32. L-Tyrosine

50jiachu1-pos #574 RT: 1.12 AV: 1 NL: 5.51E+006
T: FTMS + p ESI d Full ms2 182.0810@hcd35.00 [50.0000-205.0000]



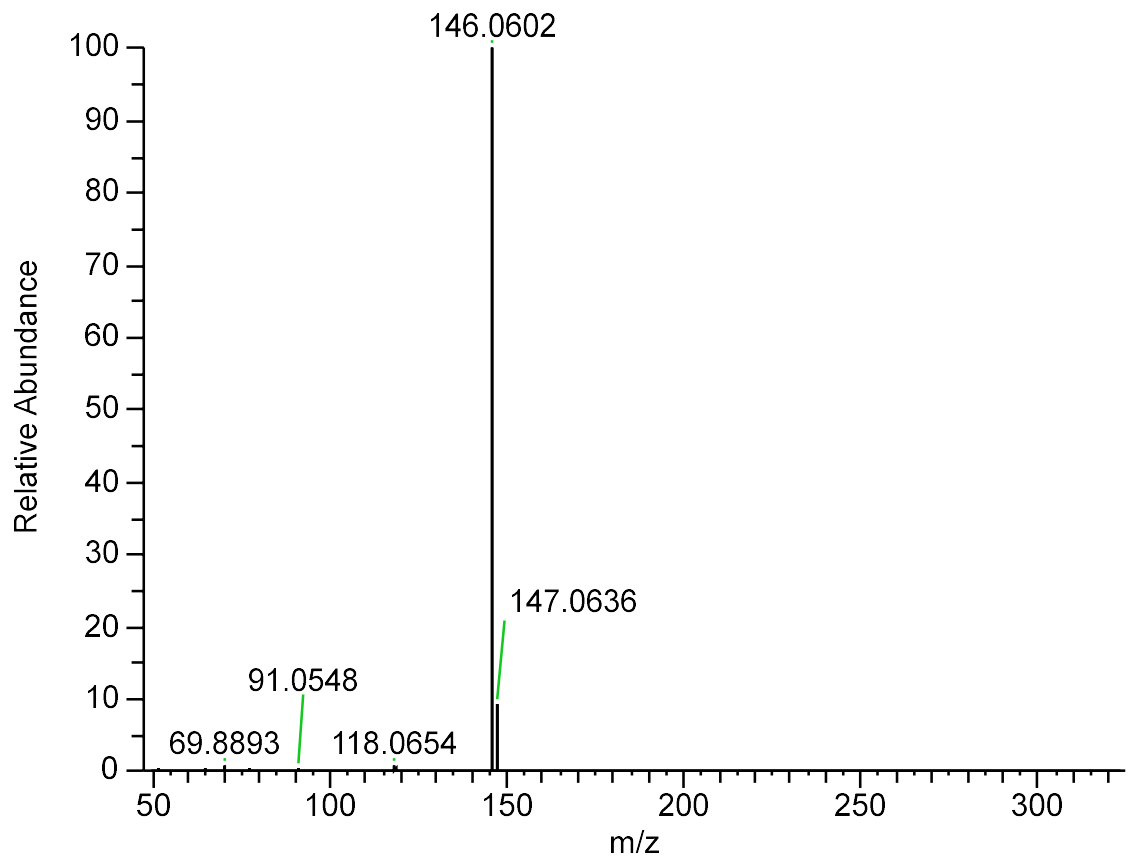
33. Methyl cinnamate

50jiachu1-pos #5769 RT: 10.48 AV: 1 NL: 9.88E+005
T: FTMS + p ESI d Full ms2 163.0751@hcd35.00 [50.0000-350.0000]



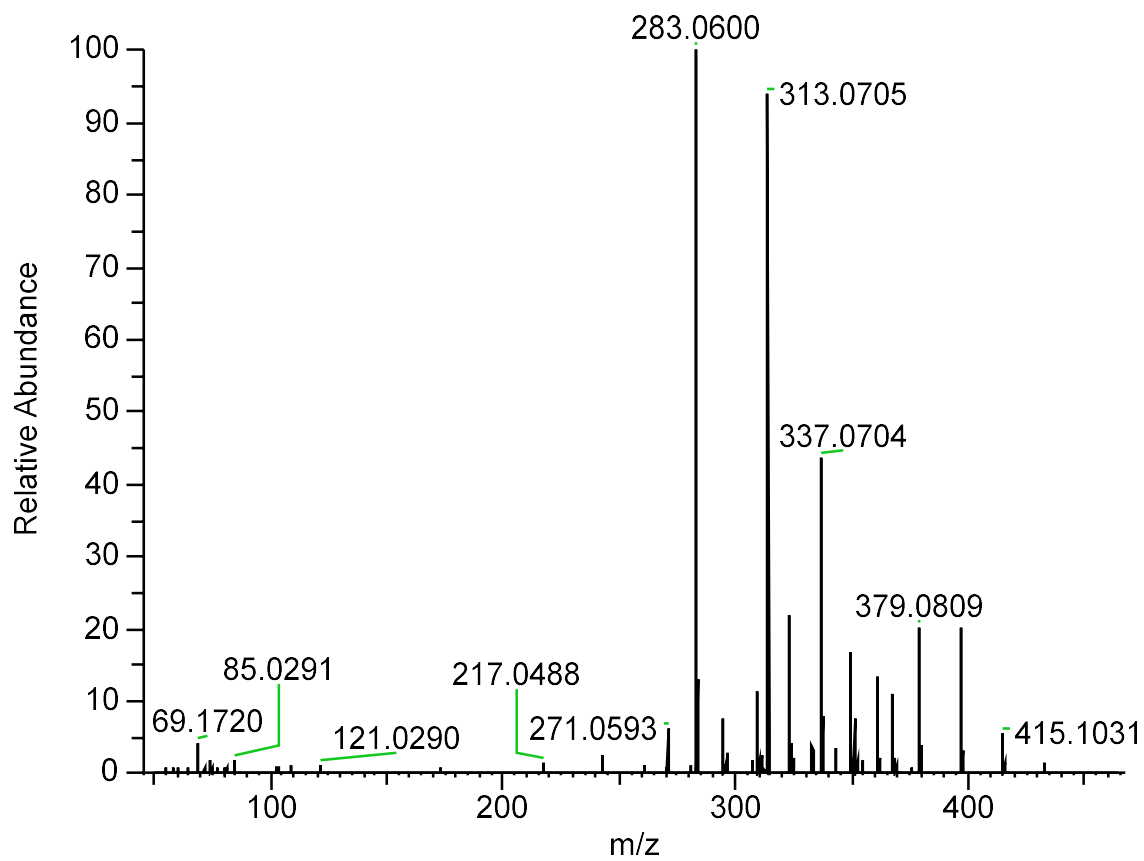
34. 8-Hydroxyquinoline

50jiachu1-pos #2039 RT: 3.74 AV: 1 NL: 4.97E+007
T: FTMS + p ESI d Full ms2 146.1172@hcd35.00 [50.0000-320.0000]



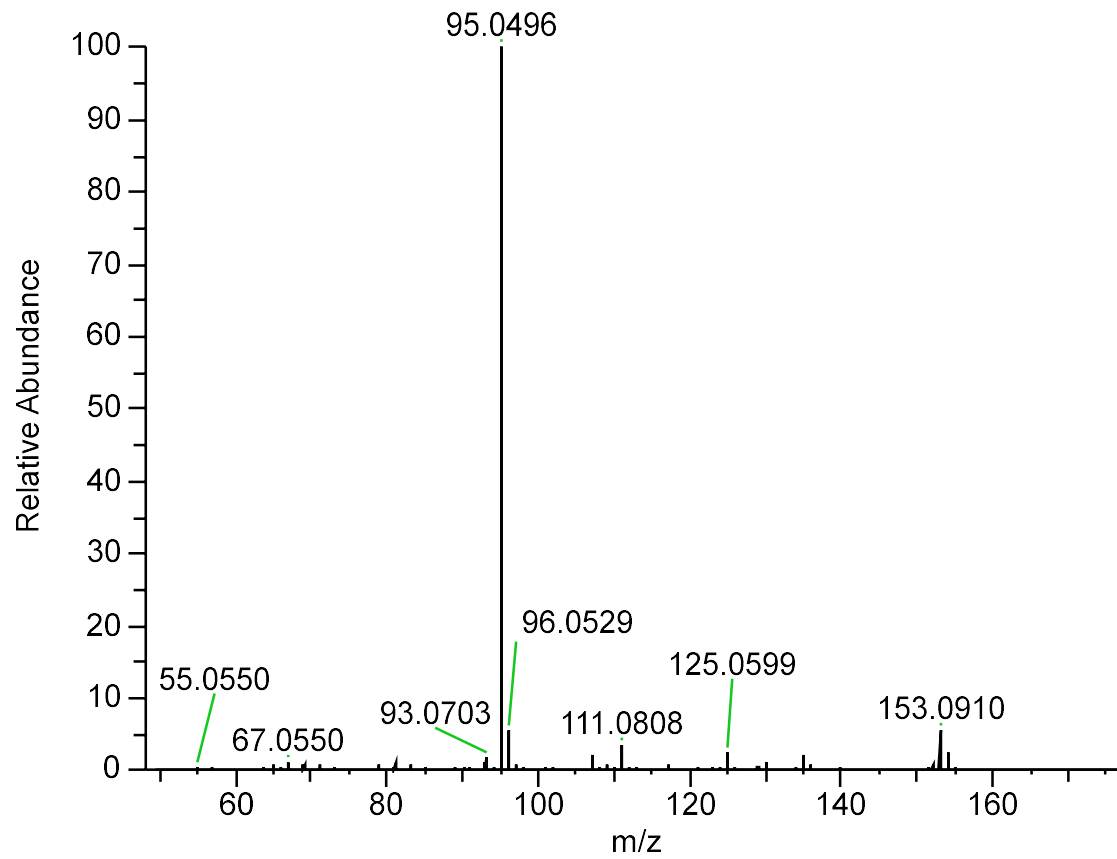
35. Vitexin

50jiachu1-pos #6569 RT: 11.81 AV: 1 NL: 4.23E+007
T: FTMS + p ESI d Full ms2 433.1123@hcd35.00 [50.0000-460.0000]



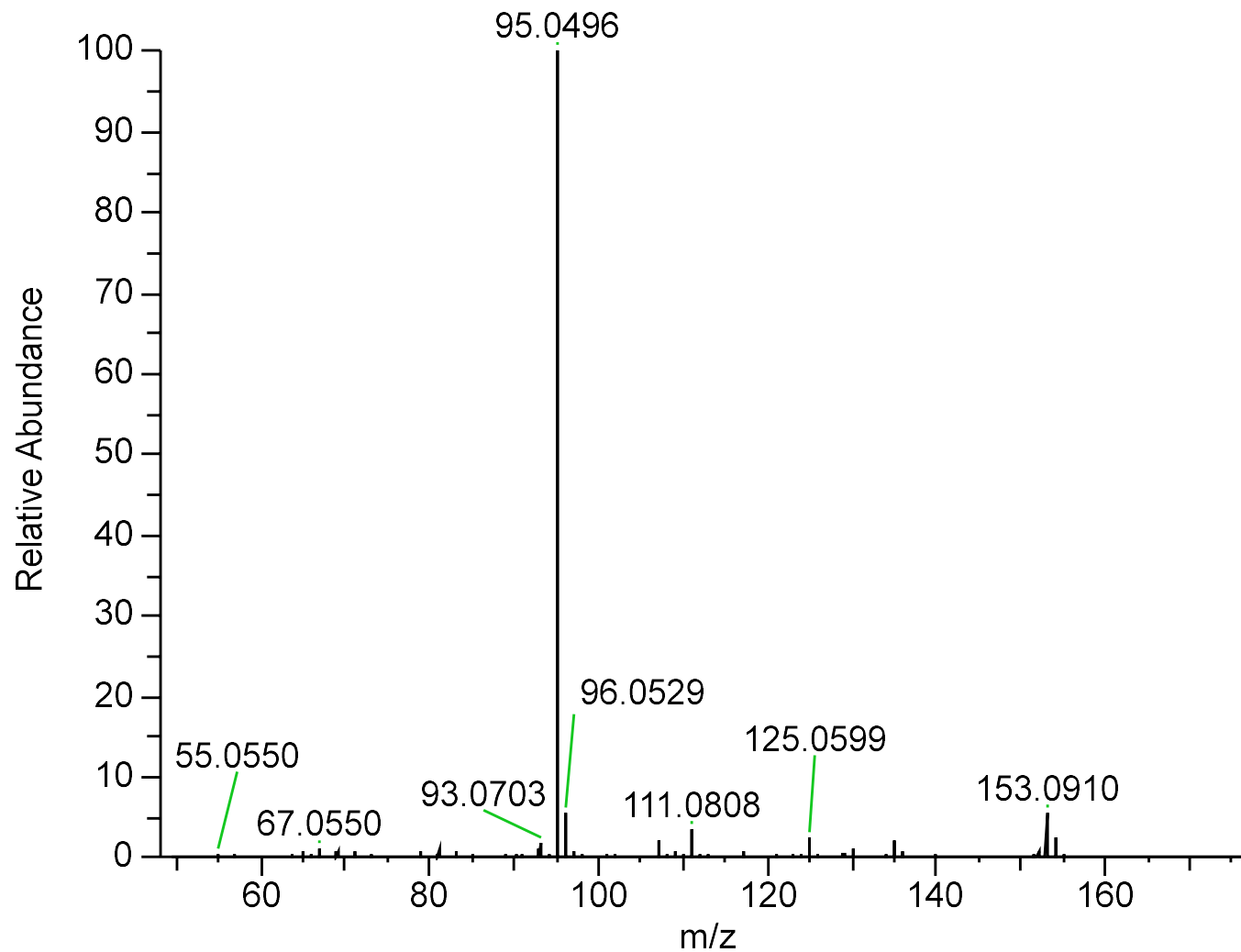
36. Citral

50jiachu1-pos #8289 RT: 14.66 AV: 1 NL: 2.03E+006
T: FTMS + p ESI d Full ms2 153.0908@hcd35.00 [50.0000-175.0000]



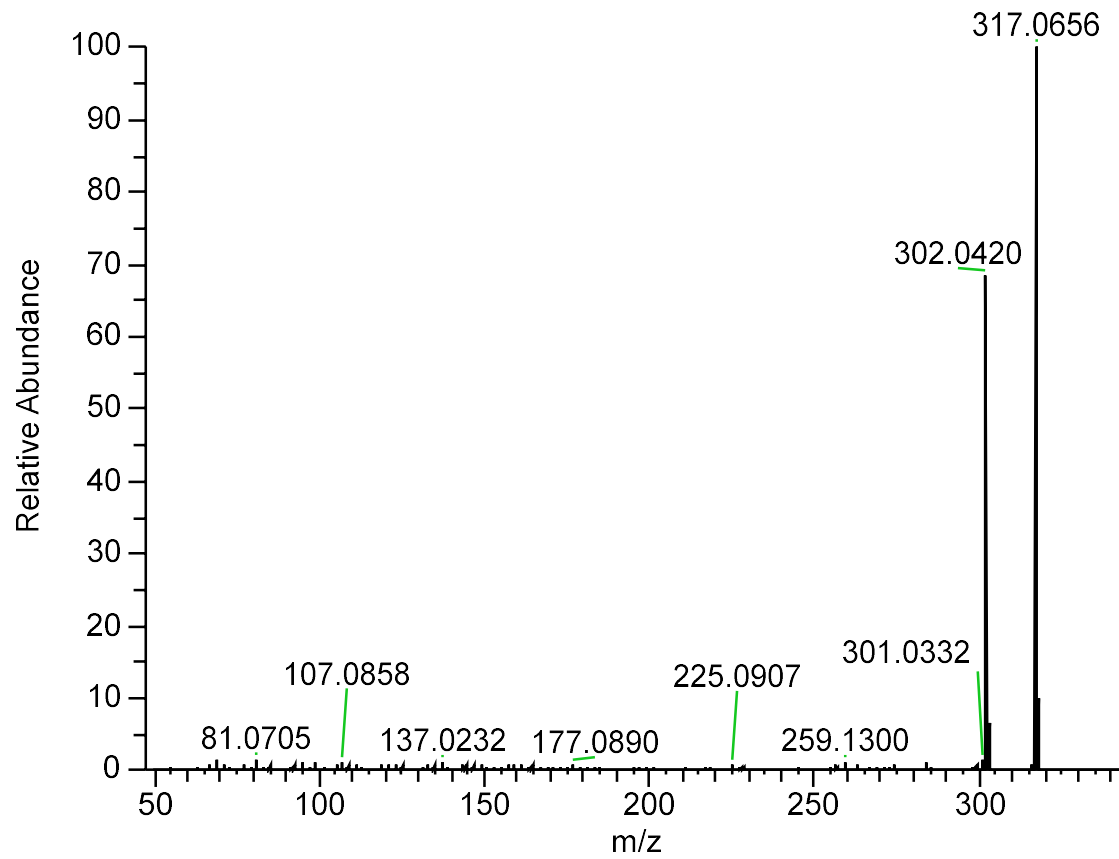
37. Berberine

50jiachu1-pos #8289 RT: 14.66 AV: 1 NL: 2.03E+006
T: FTMS + p ESI d Full ms2 153.0908@hcd35.00 [50.0000-175.0000]



38. Rhamnetin

50jiachu1-pos #10102 RT: 17.89 AV: 1 NL: 9.78E+005
T: FTMS + p ESI d Full ms2 317.0650@hcd35.00 [50.0000-340.0000]



39. Stigmastane-3,6-dione

50jiachu1-pos #20196 RT: 40.90 AV: 1 NL: 3.95E+005
T: FTMS + p ESI d Full ms2 429.3720@hcd35.00 [59.6667-895.0000]

