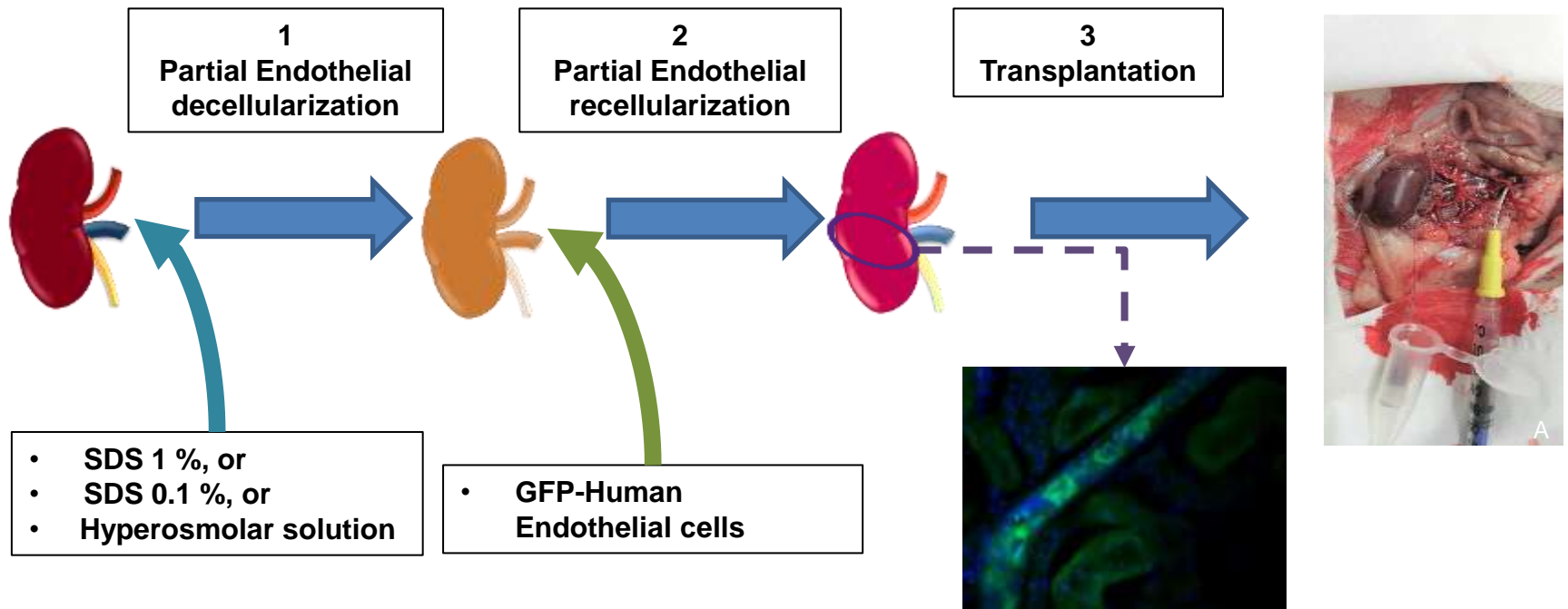


Graphical Abstract

Human Endothelial Cell Seeding in Partially Decellularized Kidneys

Geraldine Haeublein, Gabriela Lombardi, Fiorella Caro, Diego Guerrieri, Carla Remolins, Claudio Incardona, Domingo Casadei, Eduardo Chuluyan



- Three protocols were evaluated in order to maintain parenchyma epithelial cells and remove selectively rat endothelial cells.
- Partially endothelial decellularized kidneys were recellularized with human endothelial cells which are attached in almost all the vascular bed.
- The bioartificial kidney, reconstructed with human endothelial cells, achieved complete perfusion and urine once implanted in a recipient.