

## Research Article

# A Novel Feature Selection with Hybrid Deep Learning Based Heart Disease Detection and Classification in the e-Healthcare Environment

Dwarakanath B.,<sup>1</sup> Latha M.,<sup>1</sup> Annamalai R. ,<sup>2</sup> Jagadish S. Kallimani,<sup>3</sup> Ranjan Walia ,<sup>4</sup> and Birhanu Belete <sup>5</sup>

<sup>1</sup>Department of Information Technology, SRM Institute of Science and Technology, Ramapuram, Chennai, India

<sup>2</sup>Department of Artificial Intelligence, Amrita School of Engineering, Amrita Vishwa Vidyapeetham, Chennai, India

<sup>3</sup>Department of Artificial Intelligence and Machine Learning, M S Ramaiah Institute of Technology, Bangalore, India

<sup>4</sup>Department of Electrical Engineering, Model Institute of Engineering and Technology, Jammu, Jammu and Kashmir, India

<sup>5</sup>School of Electrical and Computer Science Engineering, Jimma Institute of Technology, Jimma, Ethiopia

Correspondence should be addressed to Birhanu Belete; birhanu.belete@ju.edu.et

Received 14 May 2022; Revised 29 August 2022; Accepted 8 September 2022; Published 28 September 2022

Academic Editor: Kapil Sharma

Copyright © 2022 Dwarakanath B. et al. This is an open access article distributed under the Creative Commons Attribution License, which permits unrestricted use, distribution, and reproduction in any medium, provided the original work is properly cited.

With the advancements in data mining, wearables, and cloud computing, online disease diagnosis services have been widely employed in the e-healthcare environment and improved the quality of the services. The e-healthcare services help to reduce the death rate by the earlier identification of the diseases. Simultaneously, heart disease (HD) is a deadly disorder, and patient survival depends on early diagnosis of HD. Early HD diagnosis and categorization play a key role in the analysis of clinical data. In the context of e-healthcare, we provide a novel feature selection with hybrid deep learning-based heart disease detection and classification (FSHDL-HDDC) model. The two primary preprocessing processes of the FSHDL-HDDC approach are data normalisation and the replacement of missing values. The FSHDL-HDDC method also necessitates the development of a feature selection method based on the elite opposition-based squirrel search algorithm (EO-SSA) in order to determine the optimal subset of features. Moreover, an attention-based convolutional neural network (ACNN) with long short-term memory (LSTM), called (ACNN-LSTM) model, is utilized for the detection of HD by using medical data. An extensive experimental study is performed to ensure the improved classification performance of the FSHDL-HDDC technique. A detailed comparison study reported the betterment of the FSHDL-HDDC method on existing techniques in terms of different performance measures. The suggested system, the FSHDL-HDDC, has reached its maximum level of accuracy, which is 0.9772.

## 1. Introduction

E-healthcare could give medical diagnosis services anytime and anyplace, gaining interest recently. Online medical diagnosis is convenient and adaptable since it reduces the wait time to see a doctor and breaks geographical restrictions [1]. E-healthcare models use data mining (DM) to forecast hidden diseases from medical data. With obtained medical data, healthcare centres can develop detection systems by using medical data mining and employing skyline queries to

assess patients' health conditions quickly and provide online medical diagnosis services [2]. In typical online medical systems, healthcare information data are normally maintained in discrete healthcare centres, and an individual healthcare centre collects only a narrower collection of healthcare information [3].

Internet of things (IoT) expansion and clinical trials have improved remote healthcare monitoring [4]. IoT connects physical items to continuously monitor physical occurrences. With IoT, heart disease monitoring systems may

capture and send patients' physical parameters in real-time [5]. Humans have one heart. Heart disease is a major health issue. Predicting heart disease is one of the most difficult and important subjects in medical study. It involves observing symptoms such as chest congestion, chest pain, cold sweats, shortness of breath, and blood pressure [6]. IoT sensor values are used to forecast heart disease diagnoses. In recent years, only a clinical and physical exam can diagnose disease.

A smartwatch can detect healthcare anomalies, such as irregular heartbeats in seniors. Healthcare monitoring equipment activates an alarm when it detects an irregular heart rhythm in a stationary person [7]. Medical applications use Bluetooth, RFID, and body area network. Clothing sensors measure blood pressure, ECG, and EMG. Smartwatches assess blood oxygen saturation, body temperature, the wearer's position, and movement. The observed information is sent to cloud storage and distributed to stakeholders such as family members, hospitals, and doctors. Wearable devices have gained popularity in healthcare monitoring systems, resulting in the Internet of medical things (IoMT) [8]. Data mining and ML save computing time and expenses. ML detects interventions and illnesses that change a patient's lifestyle. Usually, heart disease affects the elderly, although it's becoming more common across age groups [9]. Medical technology has progressed greatly in recent years. Rural areas have less healthcare. E-health reduces medical test costs, heart disease, and mortality. To identify and categorize HD in the context of e-healthcare, a successful FSHDL-HDDC method has been created. Since heart disease (HD) is a deadly condition, early detection of the condition is crucial to boosting patient survival rates. A significant issue in the analysis of clinical data is the earlier identification and classification of HD.

The key contribution of the manuscript.

- (i) The new elite opposition-based squirrel search algorithm (EO-SSA) feature selection method is the core of the FSHDL-HDDC methodology.
- (ii) Additionally, the (ACNN-LSTM) model, an attention-based convolutional neural network (ACNN) with long short-term memory (LSTM), is used to identify HD by using clinical data.
- (iii) The development of the EO-SSA approach for the choice of appropriate parameters for HD detection and categorization serves as evidence of the study's uniqueness.
- (iv) Several simulations utilising benchmark HD datasets are executed, and the results are analysed from multiple perspectives to demonstrate that the FSHDL-HDDC technique yields superior results.

## 2. Literature Review

Khan and Algarni [10] proposed an IoMT architecture for the heart disease diagnosis with an ANFIS and modified salp swarm optimization (MSSO). The presented method enhances the search capacity with the Levy flight method. The learning parameter is enhanced by MSSO to provide

effective outcomes for ANFIS. Haq et al. [11] presented a detection method with ML technique for diabetes diagnosis. The diabetes dataset, a medical dataset obtained from the patient's medical history, was used to test the proposed technique. They presented a filter model-based decision tree (Iterative Dichotomiser 3) method for the significant FS method. Also, the 3 ensemble learning models, Random Forest and AdaBoost, are employed for FS as well as compared the classification accuracy with wrapper-based FS models.

Meng et al. [12] included patients with stable ischemic heart disease (SIHD) in their study and applied a machine learning algorithm to patient-reported outcome (PRO) data gathered from activity trackers. Each participant was provided with a Fitbit Charge 2 for tracking their daily activities, and all the subjects have accomplished 8 PRO Measurement Information Systems. The 2 methods were constructed to categorise PRO scores with activity tracker data. Hashi and Zaman [13] compared and developed the performances of the conventional model with the presented method, which forecast heart disease by executing the LR, KNN, SVM, DT, and RF classification methods. The presented model assists in tuning the hyperparameter by means of the grid search model for the abovementioned 5 classification models.

Kishor and Jeberson [14] employed several ML techniques to produce information. An ML architecture has been presented for earlier diagnosis of heart disease, including IoT. The presented method is estimated by using KNN, DT, RF, MLP, NB, and L-SVM. Li et al. [15] developed accurate and efficient systems for the detection of heart diseases, and it depends on ML models. The proposed method depends on a classification algorithm that involves the KNN, SVM, DT, NB, ANN, and LR, whereas the typical FS method utilises minimal redundancy maximal relevance, relief, local learning to remove redundant and irrelevant features, and least absolute shrinkage selection operator. Also, presented a new fast conditional mutual data feature selection method for solving FS problems.

In Jain et al. [16], the 5 advanced ML methods (KNN, NB, LR, RF, and AdaBoost) have been used by the *Python* programming language for developing the predictive models. The efficiency was calculated on 30% of the information. Later, the predictive model was used in the cloud server for easy access through the internet. Zhang et al. [17] presented a heart disease predictive model which integrates DNN and embedded FS methods. In this strategy, the L1 norm and the linear SVC methodology are employed as a penalty to choose data subsets that are strongly associated with heart disease. This feature is fed into the DNN system. Rajaraman and Prakash [18] made a contribution to the development of an artificial classifier for patients suffering from congestive heart failure (CHF). This classifier differentiates between persons who are at low risk and those who are at high risk. In their study on the prevalence of heart disease, Kamalraj et al. [19] employed deep learning techniques, random forests, logistic regression, support vector machines (SVMs), hyperparameter tuning, and feature selection.

The accuracy performance of the HD classification system, created by Detrano et al. [20] utilising machine learning classification approaches, was 77%. The Cleveland dataset was analysed by using both the global evolutionary strategy and the features selection approach. In a different work, Gudadhe et al. [21] created a classification system for HD utilising multilayer perceptron and support vector machine (SVM) methods. With this approach, they were able to achieve an accuracy of 80.41 percent. A method for classifying high-definition (HD) photos by using a neural network and fuzzy logic was developed by Kahramanli and Allahverdi [22]. The accuracy of the classification system was found to be 87.4%.

A method for determining HD was developed by Kavitha et al. [23] based on a qualified medical diagnosis. The system was developed by using artificial neural networks, decision trees, and navigation bays as examples of machine learning prediction models. The accuracy of the NB classifier was 86.12%, that of the ANN classifier was 88.12%, and that of the DT classifier was 80.4%. Based on artificial neural network technology, Reshma et al. [24] established a three-phase technique for HD prediction in angina. With this approach, they were able to achieve an accuracy rate of 88.89%. A thorough medical decision support system for HD diagnosis was created by Samuel et al. The system makes use of a fuzzy analytical hierarchy technique along with a neural network. Performance accuracy was 91.10 percent for the suggested method.

### 3. The Proposed Model

This study developed a successful FSHDL-HDDC strategy for recognising and categorising HD in the context of e-healthcare. Preprocessing (missing value replacement and data normalisation), the EO-SSA-based feature selection, and the ACNN-LSTM-based classification comprise the proposed FSHDL-HDDC approach. Using EO-SSA approaches to find the most relevant set of features improves classification accuracy while decreasing processing complexity. The FSHDL-HDDC technique procedure is depicted in Figure 1.

**3.1. Data Pre-Processing.** Initially, the medical data is pre-processed in two ways, namely missing value replacement and data normalisation. Initially, the data value is gathered from the UCI data set, where they are preprocessed that the replacement of missing data or requires noise removal. The noiseless data assist in efficient detecting patterns related to heart diseases. The median studentized residual method is used for removing noisy or undesirable data since it examines the correlations among the information in the datasets. This procedure of noise reduction improves the detection system of heart disease. This study developed an efficient FSHDL-HDDC technique for recognising and classifying HD within the context of e-healthcare. Replacement of missing values and data normalisation is the preprocessing step of the proposed FSHDL-HDDC technique, followed by feature selection based on the EO-SSA and classification based on the ACNN-LSTM. Using EO-SSA techniques to locate the most relevant set of features

improves classification accuracy while reducing processing complexity. Figure 1 depicts the FSHDL-HDDC method in operation. The standardization method can be implemented by using various regression analyses and data distributions for the diagnosis of heart diseases.

**3.2. Algorithmic Process Involved in the EO-SSA Based Feature Selection Technique.** Once the healthcare data is pre-processed, the EO-SSA technique is utilized to pick an optimal subset of features. The typical SSA upgrades the locations of individuals as per the type of individuals, the current season, and whether a predator appears [19]. Assume that  $N$  number of the population,  $FS_u$  and  $FS_L$  represent the upper and lower limits of the searching space, respectively.  $N$  individuals are arbitrarily formed as follows:

$$FS_i = FS_L + rand(1, D) \times (FS_u - FS_L). \quad (1)$$

$FS_i$  denotes the  $i$ th individual, ( $i = 1 \dots N$ );  $rand$  indicates an arbitrary value within  $[0, 1]$ , and  $D$  signifies the dimensionality of the problem. The individual updates their position by gliding to the acorn trees or hickory trees.

$$\begin{cases} FS_i^{t+1} = FS_i^t + d_g \times G_c \times (F_h^t - FS_i^t) & \text{if } r > P_{dp}, \\ \text{randomlocation} & \text{or else,} \end{cases} \quad (2)$$

$$\begin{cases} FS_i^{t+1} = FS_i^t + d_g \times G_c \times (F_{ai}^t - FS_i^t) & \text{if } r > P_{dp}, \\ \text{randomlocation} & \text{or else,} \end{cases} \quad (3)$$

$r$  indicates an arbitrary value within  $[0, 1]$ ,  $P_{dp}$  values at 0.1 denote the predator appearance possibility, When  $r > P_{dp}$ , no predators appear, the squirrel glides in the forest to find food, and the individual is safe when  $r \leq P_{dp}$ , the predator appears. The squirrel is forced to narrow the scope of activities, the individual is threatened, and the position is randomly relocated,  $t$  signifies the existing iteration,  $G_c$  implies the constant with the values of 1.9, and  $F_{ai}$  ( $i = 1, 2, \dots, N_{fs}$ ) means the individual arbitrarily elected from  $F_a$ ,  $d_g$  representing the gliding distance as follows:

$$d_g = \frac{hg}{\tan(\varphi) \times sf}, \quad (4)$$

$hg$  indicates the constant value 8,  $sf$  denotes the constant value 18, and  $\tan(\varphi)$  signifies the gliding angle as follows [20]:

$$\tan(\varphi) = \frac{D}{L}. \quad (5)$$

$D$  denotes the drag force and  $L$  represent the lift force as follows:

$$D = \frac{1}{2\rho V^2 SC_D}, \quad (6)$$

$$L = \frac{1}{2\rho V^2 SC_L}, \quad (7)$$

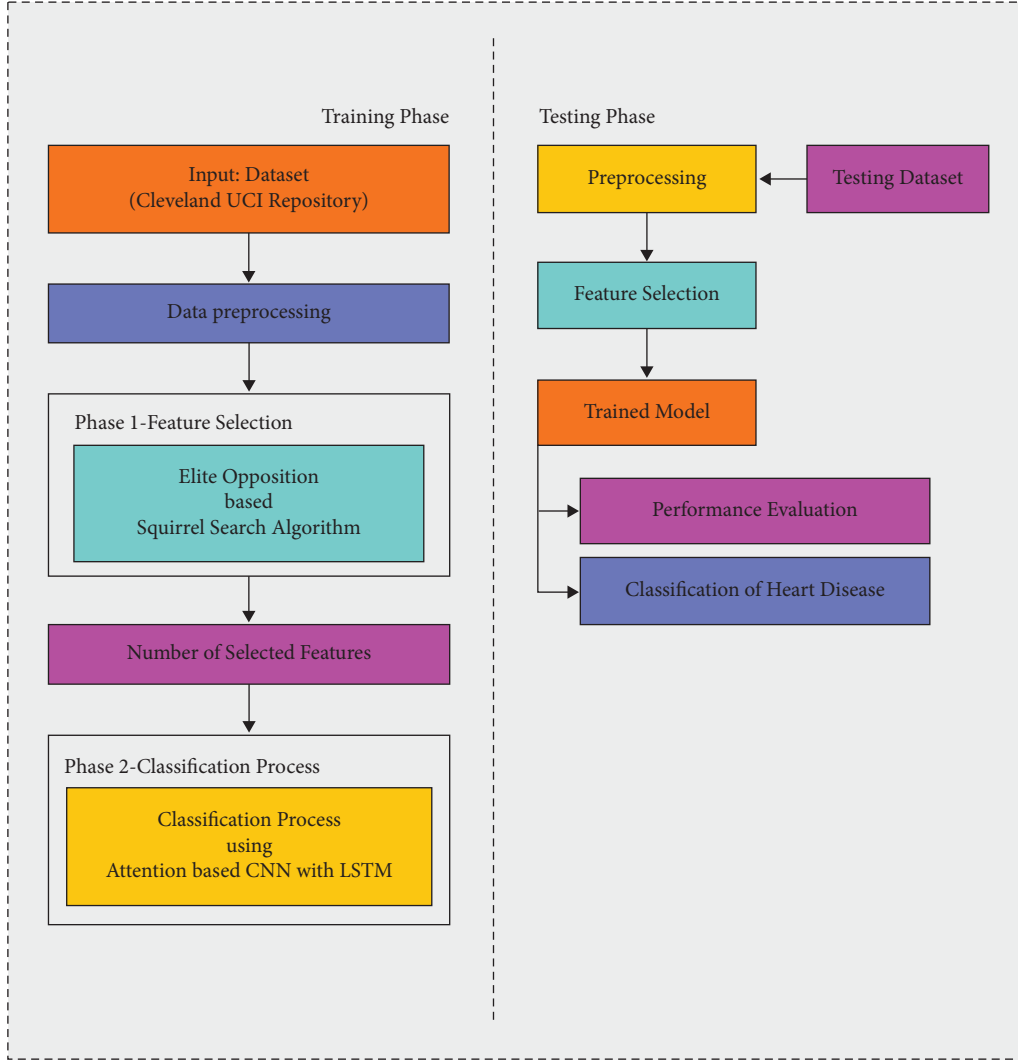


FIGURE 1: The overall process of the FSHDL-HDDC manner.

$\rho, V, S$ , and  $C_D$  denotes constant that is equivalent to  $1.204 \text{ kg m}^{-3}, 5.25 \text{ ms}^{-1}, 154 \text{ cm}^2$ , and 0.6, correspondingly;  $C_L$  denotes an arbitrary value in the range 0.675-1.5. In the initial stage of all the iterations, the typical SSA needs that the entire population is in winter. Once each individual has been upgraded, either the seasonal variations are judged as follows. Figure 2 depicts the flowchart of SSA.

$$S_c^t = \sqrt{\sum_{k=1}^D (F_{ai,k}^t - F_{h,k}^t)^2} \quad i = 1, 2, \dots, N_{fs}, \quad (8)$$

$$S_{\min} = \frac{10e^{-6}}{(365)^{i/(T/2.5)}}. \quad (9)$$

$T$  denotes the maximal amount of iterations, if  $S_c^t < S_{\min}$ . If winter has ended, the season turns to summer; otherwise, the season remains the same. Once the season turns into summer, each individual who glides to  $F_h$  stays at the upgraded position, and each individual who glides to  $F_a$

and does not meet with predators relocates their locations as follows:

$$FS_{new}^{i+1} = FS_L + Le'vy(n) \times (FS_u - FS_L). \quad (10)$$

For nonnegative random variables, the Levy distribution is a probability distribution that is stable and continuous. Levy represents the arbitrary walk whose step follows the Levy distribution as

$$Le'vy(x) = 0.01 \times \frac{r_a \times \sigma}{|r_b|^{1/\beta}}. \quad (11)$$

$\beta$  indicates the constant value 1.5,  $\sigma$  as

$$\sigma = \left( \frac{\Gamma(1+\beta) \times \sin(\pi\beta/2)}{\Gamma(1+\beta/2) \times \beta \times 2^{(\beta-1/2)}} \right)^{1/\beta}. \quad (12)$$

The optimization procedure of the SSA is considered as the continuous transformation of their searching space. Once the method falls as to local optimal, the searching space is

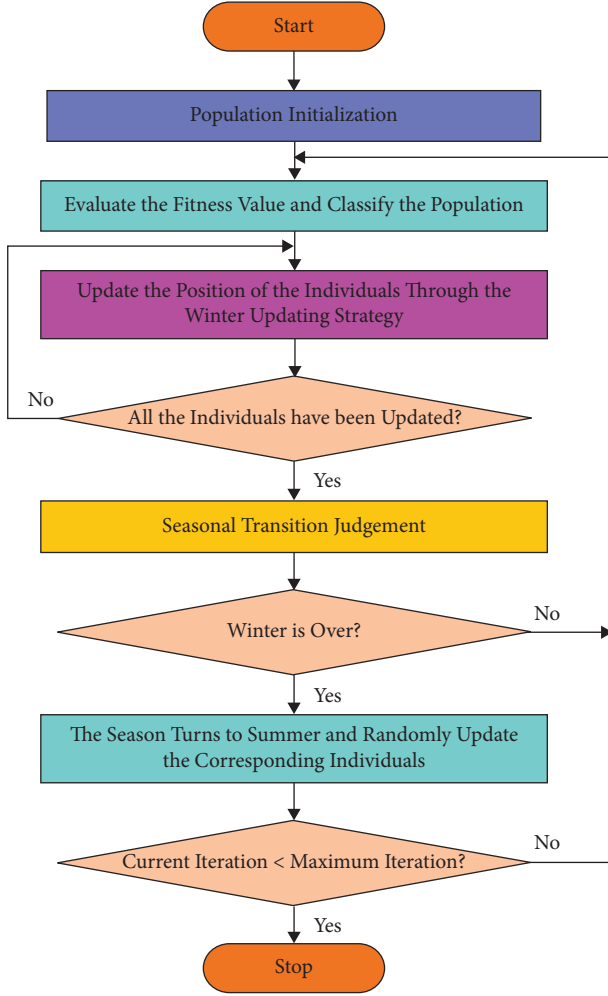


FIGURE 2: Flowchart of SSA.

complex for having the optimum solution globally. It is proposed to enhance the global search capabilities of the SSA by using the elite opposition-based learning (EOBL) technique (also known as its capacity for exploration). Because the opposition solution of generated EOBL may not be beneficial when compared to the existing search space to seek the global optimum solution, therefore, utilize the EOBL approach.

EOBL is a modern approach in the area of intelligence computation: Assume the elite individual from the existing population is  $X_e = (x_{e,1}, x_{e,2}, \dots, x_{e,D})$ , for an individual  $X_i = (x_{i,1}, x_{i,2}, \dots, x_{i,D})$ , and the elite opposition solution  $\tilde{X}_i = (\tilde{x}_{i,1}, \tilde{x}_{i,2}, \dots, \tilde{x}_{i,D})$  of  $X_i$  is determined by:

$$\tilde{x} = \eta * (da_j + db_j) - x_{e,j}. \quad (13)$$

where as  $i = 1, 2, \dots, NP$ ,  $NP$  represent the population size,  $j = 1, 2, \dots, D$ ,  $\eta \in U(0, 1)$ ,  $\eta$  indicates a generalized coefficient, and  $[da_j, db_j]$  denotes the dynamic boundary of the  $j$ th dimension searching space as follows [21]:

$$da_j = \min(x_{i,j}), \quad (14)$$

$$db_j = \max(x_{i,j}). \quad (15)$$

Furthermore, when the operator of the dynamic boundary makes  $\tilde{x}_{i,j}$  jumps out of  $[da_j, db_j]$ , the subsequent process is utilized for resetting  $\tilde{x}_{i,j}$ :

$$\tilde{x}_{i,j} = \text{rand}(da_j, db_j). \quad (16)$$

The elite opposition-based squirrel search algorithm (EO-SSA) is created by using the FSHDL-HDDC technology to find the ideal subset of attributes. An attention-based convolutional neural network (ACNN-LSTM), also known as a CNN with long short-term memory, is used to analyse medical data to find occurrences of HD (LSTM). The EOBL evaluates both the elite population and the present population while concurrently creating the opposition's population based on the elite individual. Additionally, it fully makes use of the characteristics of the exceptional individual to produce search data that is more effective than that produced by the average person, somewhat increasing population variety. EOBL might improve SSA's capacity for foreign travel.

When the feature vector size is  $N$ , the number of distinct feature combinations tends to rise to  $2N$  during the feature selection process with the EO-SSA, which is a large space for a thorough search. The proposed hybrid model is utilized to dynamically scan the feature space and precisely integrate features. In order to create an optimal outcome that reduces the number of subsets of selected features while boosting output accuracy for a given classification, feature selection must satisfy one or more criteria [22]. As previously mentioned, the fitness function that was employed to determine the solution in this case allowed for the achievement of the following harmony between the two goals.

$$\text{fitness} = \alpha \Delta_R(D) + \beta \frac{|Y|}{|T|}. \quad (17)$$

In which  $\Delta_R(D)$  represents the classifier error rate.  $|Y|$  indicates the size of the subset, and  $|T|$  signifies the overall amount of the feature comprised in the existing data set.  $\alpha$  denotes a  $\in [0, 1]$  parameter associated with the relative weight of the classification error rate, similarly and  $\beta = 1 - \alpha$  means the importance of the reduction feature. Priority and weight have been allocated in place of counting the number of features that were categorised as successful. Solutions with comparable classification accuracy but fewer selected features are disregarded when just classification accuracy is taken into account by the estimate function, which is a critical step in reducing the dimensionality issue. This is true since the estimation function only takes classification accuracy into account.

**3.3. Process Involved in the ACNN-LSTM Based Classification.** Next to the optimal selection of features, the classification process is carried out by the utilization of the ACNN-LSTM model. In this study, the hybrid integration of LSTM and CNN methods has been employed. In order to process the consecutive data, RNN is extensively utilized. The current input and the past output are concatenated with this RNN. By presenting multiple gates, LSTM problems

could be solved easily. The LSTM gate construction can be used to randomly memorise the input [23]. The least important knowledge is fully lost in tandem with the most crucial knowledge. As a result, an exact computation of the amount of data that can be preserved in the current state has been produced. The sigmoid function is used as an input, producing a value between zero and one and so selecting the currently retained data. Its inputs are the current input of a function  $X$   $t$  and the output from the previous state  $h$  ( $t-1$ ). The input and forget gates, which are also used to start the next state's  $C$   $t$  complete state from the output of the current unit, are utilized to obtain the next state's  $h$   $t$  hidden layer. The amount of cell state established for projecting an output is indicated by the value of  $t$  that the sigmoid function returns, which ranges from zero to one. Once the multiplication of cell state data arises with  $o_t$ , it has been activated by using  $\tan h$  layer. Therefore, the output detail of the LSTM determination  $h_t$  are modelled. For the LSTM, the respective relations among the multiple gates are arithmetically formulated by the equation:

$$z_t = \tanh(W_z[h_{t-1}, X_t] + b_z), \quad (18)$$

$$i_t = \text{sigmoid}(W_i[h_{t-1}, X_t] + b_i), \quad (19)$$

$$f_t = \text{sigmoid}(W_f[h_{t-1}, X_t] + b_f), \quad (20)$$

$$o_t = \text{sigmoid}(W_o[h_{t-1}, X_t] + b_o), \quad (21)$$

$$c_t = f_t \cdot C_{t-1} + i_t \cdot z_t, \quad (22)$$

$$h_t = o_t \cdot \tanh(c_t). \quad (23)$$

It becomes harder to understand the data from a long-term perspective as the length of the input sequence increases due to the gradient problem explosion. The forget gate explains how to ignore cell state data, whereas the input gate explains how to calculate novel input. A depiction of the outcome value can be produced based on the cell's current state and contents. The CNN-LSTM methodology offers four channels for continuously inputting a large number of embedding labels to achieve varied feature attributes.

$$c = \text{conv}(X, K) + b, \quad (24)$$

$x$  is a symbol that can be used to express the length of the sequence. LSTM is an abbreviation for the combined LSTM process ( $x$ ). The CNN and LSTM-NN both use parallel and series architectures to accomplish their respective goals. The RNN is applied widely so that the consecutive data can be processed. This RNN joins the most recent input with the most recent output from the previous iteration. Problems with the LSTM could be readily handled by showing a network of several gates. In general, the series structure is widely utilized despite the data loss because of the nature of the convolutional method. Now, series structures are substituted with parallel structures and attain an effective outcome. In all the channels, the recording of the structure can be made as follows:

$$\text{channel}(x) = [\text{conv}(x) \oplus \text{LSTM}(x)]. \quad (25)$$

With  $x$  represent the input and the output, formulated as  $C_{out}$  and  $W_{out}$ :

$$C_{out} = \text{channel}_{\text{embedding}} = \nu_w(x), \quad (26)$$

$$W_{out} = \text{channel}_{\text{embedding}} = \nu_c(x). \quad (27)$$

The outcome and interpretation of the output of the 4-channel mechanism are integrated as a hidden layer output

$$h = [C_{out} \oplus W_{out}]. \quad (28)$$

To FC layer, these hidden layer results are transmitted, and lastly, to classifier output, the Softmax layer is employed as follows:

$$\hat{y} = \text{softmax}(\text{dense}(h)). \quad (29)$$

Following is a description of the representations by using all four channels. The  $w$  weight score, which is an important part of the dynamic flexible weight structures, is denoted as follows:

$$e_i = \nu_a^T \tanh(W_r h_i + b), \quad (30)$$

$$h_i = \langle h'_i; c_i \rangle. \quad (31)$$

In which  $h'_i$  represent the LSTM outcome at a certain time  $t$ ,  $h_i$  represent the hidden layer outcome,  $c_t$  denotes the state in LSTM,  $\nu_a$  signifies the arbitrary initiation vector,  $b$  denotes the bias, i.e., arbitrarily initiated, and  $W_r$  implies the arbitrary initiation weight matrix.

$$w = \frac{\exp(e_i)}{\varepsilon} \left[ \sum_{k=1}^{T_x} \exp(e_i k) \right]. \quad (32)$$

While the sequence length can be represented by  $x$ . The dynamic adoptive weight has weighted to the resultant vector  $c_i$  as

$$c_i = \sum_{j=1}^{T_x} w \cdot h_j. \quad (33)$$

## 4. Experimental Validation

By using the Cleveland HD benchmark dataset, the experimental results of the FSHDL-HDDC approach are assessed [24–27]. The dataset consists of 303 samples, each of which has two classes and 13 features (age, sex, cp, restbps, chol, fbs, restecg, thalach, examg, and oldpeak). The findings are assessed over ten different rounds. Table 1 contrasts the provided EOSSA-FS features with those of competing FS strategies and shows the ideal cost. The findings show that the cost of 0.4260 and seven features of the EOSSA-FS method's successful FS results were delivered.

The FSHDL-HDDC technique was applied to the categorization of HD ten times, which resulted in the production of ten confusion matrices, which are depicted in Figure 3.

TABLE 1: FS analysis of the EOSSA-FS technique.

Algorithm	Selected feature	Best cost
Relief	13, 9, 3, 11	0.4564
MRRM	12, 8, 3, 5, 11, 12, 2, 13	0.4541
LASSO	2, 12, 9, 3, 11, 13	0.4538
LLBFS	13, 12, 3, 2, 11, 10	0.4517
FCMIM	2, 3, 4, 5, 7, 8, 9, 10, 11, 13	0.4436
EOSSA-FS	6, 7, 2, 3, 4, 11, 13	0.4260

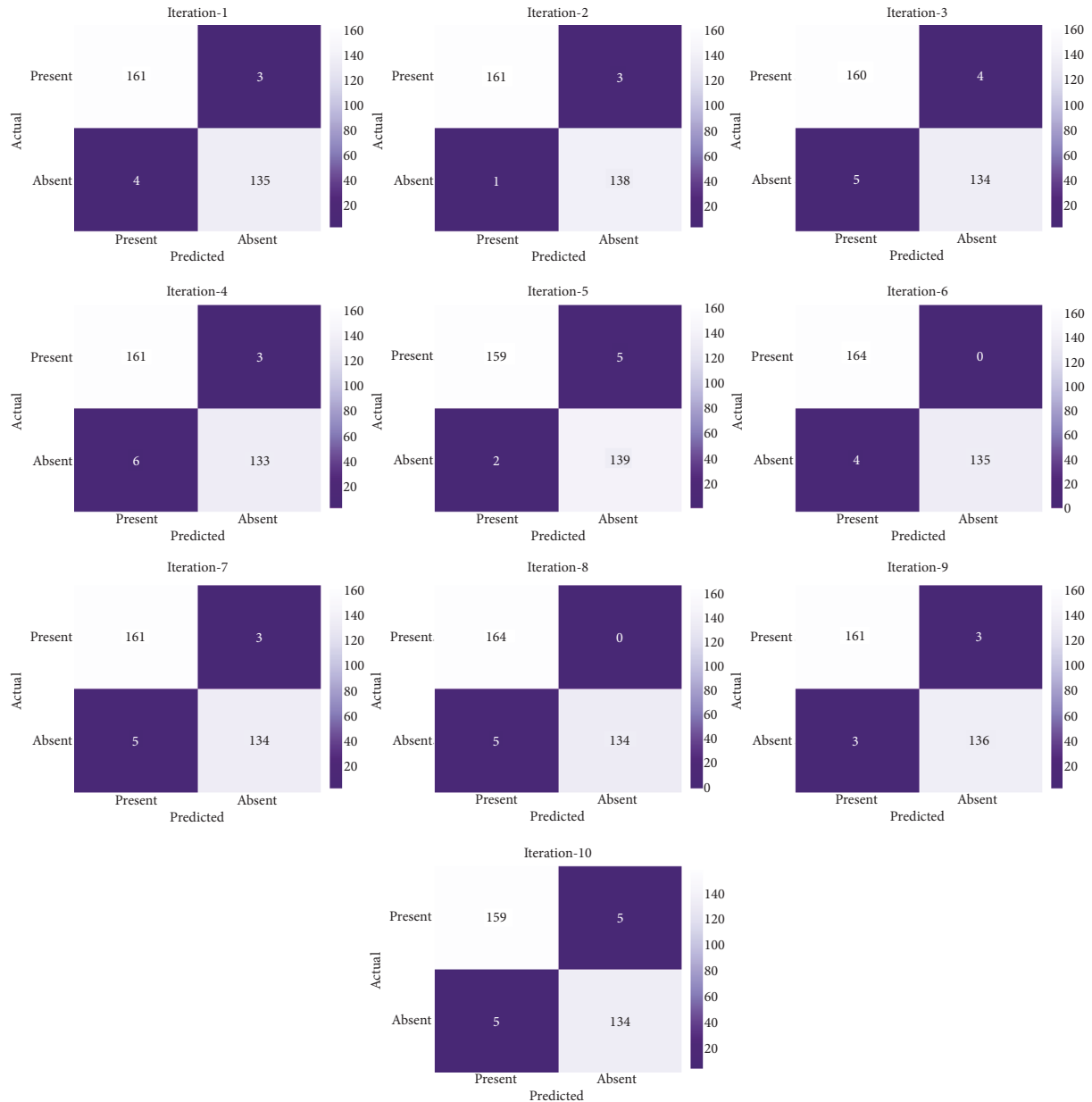


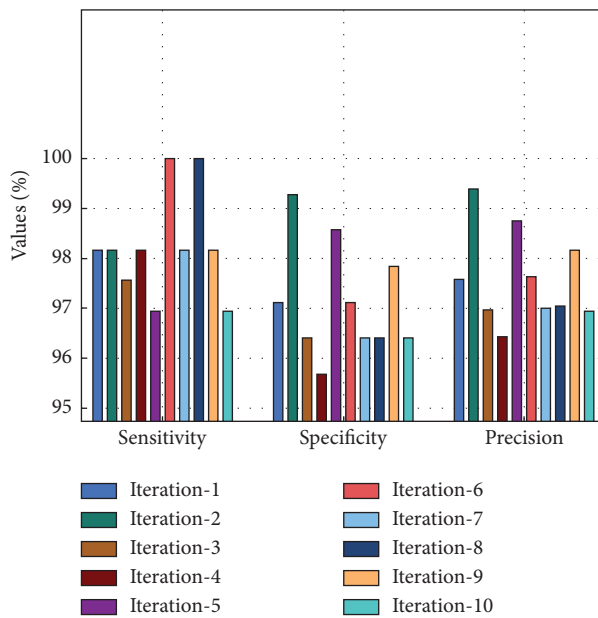
FIGURE 3: Confusion matrix of the FSHDL-HDDC technique with different runs.

With iteration-1, the FSHDL-HDDC technique has classified 161 instances into “presence of HD” and 135 instances into “absence of HD.” Besides, with iteration-4, the FSHDL-HDDC manner has classified 161 instances into “presence of

HD” and 133 instances into “absence of HD.” Along with that, with iteration-6, the FSHDL-HDDC method has classified 164 instances into “presence of HD” and 135 instances into “absence of HD.” Likewise, with iteration-8,

TABLE 2: Result analysis of the FSHDL-HDDC technique with different measures.

No. Of iterations	Sensitivity	Specificity	Precision	Accuracy	F-score	MCC
Iteration-1	98.17	97.12	97.58	97.69	97.87	95.35
Iteration-2	98.17	99.28	99.38	98.68	98.77	97.35
Iteration-3	97.56	96.40	96.97	97.03	97.26	94.02
Iteration-4	98.17	95.68	96.41	97.03	97.28	94.03
Iteration-5	96.95	98.58	98.76	97.70	97.85	95.41
Iteration-6	100.00	97.12	97.62	98.68	98.80	97.37
Iteration-7	98.17	96.40	96.99	97.36	97.58	94.69
Iteration-8	100.00	96.40	97.04	98.35	98.50	96.72
Iteration-9	98.17	97.84	98.17	98.02	98.17	96.01
Iteration-10	96.95	96.40	96.95	96.70	96.95	93.35
Average	98.23	97.12	97.59	97.72	97.90	95.43

FIGURE 4:  $Sen_y$ ,  $Spec_y$ , and  $Prec_n$  analysis of the FSHDL-HDDC approach.

the FSHDL-HDDC technique has classified 164 instances into “presence of HD” and 134 instances into “absence of HD.” Lastly, with iteration-10, the FSHDL-HDDC method has classified 159 instances into “presence of HD” and 134 instances into “absence of HD.”

A thorough analysis of the HD classification outcomes produced by using the FSHDL-HDDC technique after 10 iterations can be seen in Table 2.

Figure 4 depicts the global sensitivity, specificity, and precision analysis of the FSHDL-HDDC method after 10 iterations. The results revealed that the FSHDL-HDDC algorithm had reached improved outcomes under every iteration [28–32]. For instance, with iteration-1, the FSHDL-HDDC method has offered  $sens_y$ ,  $spec_y$ , and  $prec_n$  of 98.17%, 97.12%, and 97.58%, respectively. Along with that, with iteration-5, the FSHDL-HDDC methodology has obtainable  $sens_y$ ,  $spec_y$ , and  $prec_n$  of 96.95%, 98.58%, and 98.76%, correspondingly. Moreover, with iteration-10, the FSHDL-HDDC system has existing  $sens_y$ ,  $spec_y$ , and  $prec_n$  of 96.95%, 96.40%, and 96.95%, correspondingly.

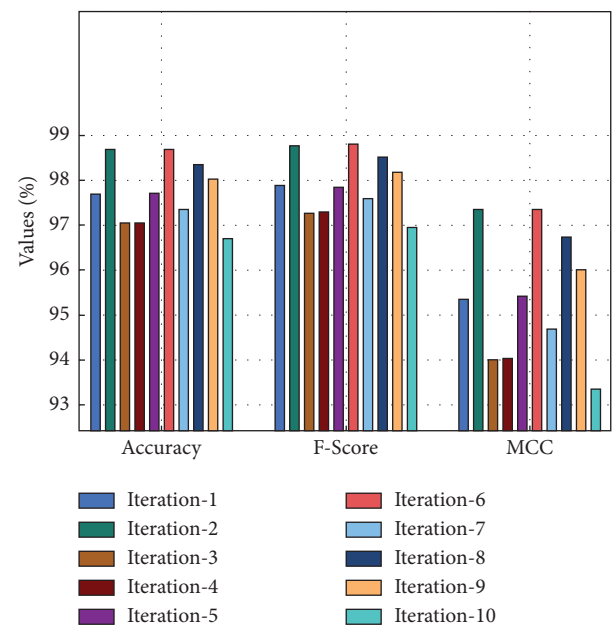
FIGURE 5:  $Acc_y$ ,  $F_{score}$ , and  $MCC$  analysis of the FSHDL-HDDC approach.

Figure 5 gives the overall  $acc_y$ ,  $F_{score}$ , and  $MCC$  analysis of the FSHDL-HDDC manner in 10 iterations. The outcomes exposed that the FSHDL-HDDC approach has gained increased outcomes under every iteration [33–35]. For instance, with iteration-1, the FSHDL-HDDC manner has obtainable  $acc_y$ ,  $F_{score}$ , and  $MCC$  of 97.69%, 97.87%, and 95.35%, correspondingly. Besides, with iteration-5, the FSHDL-HDDC algorithm has presented  $acc_y$ ,  $F_{score}$ , and  $MCC$  of 97.70%, 97.85%, and 95.41%, correspondingly. Furthermore, with iteration-10, the FSHDL-HDDC manner has offered  $acc_y$ ,  $F_{score}$ , and  $MCC$  of 96.70%, 96.95%, and 93.35%, correspondingly.

Figure 6 shows a clear ROC analysis of the FSHDL-HDDC technique on the test dataset. The FSHDL-HDDC technique can offer superior performance with a higher ROC of 99.6991, according to the data.

A thorough comparison of the FSHDL-HDDC technology and alternative approaches is provided in Table 3. Based on current practises, Figure 7 presents a succinct sensory and structural analysis of the FSHDL-HDDC



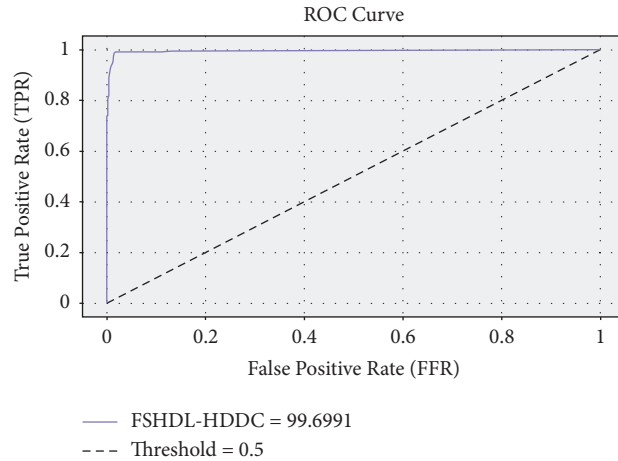


FIGURE 6: ROC analysis of the FSHDL-HDDC technique.

TABLE 3: Comparative analysis of the FSHDL-HDDC method with existing manners.

Methods	Accuracy	Specificity	Sensitivity	MCC	Execution time (min)
FSHDL-HDDC	0.9772	0.9712	0.9823	0.9543	0.0004
LR model	0.8867	0.9600	0.9800	0.9100	0.0007
KNN algorithm	0.8211	0.8700	0.7400	0.7900	0.0546
ANN model	0.7523	0.8800	0.5900	0.7400	0.3894
SVM model	0.9237	0.9800	0.8900	0.9000	0.0950
NB algorithm	0.8601	0.8900	0.7900	0.8500	0.0355
DT algorithm	0.7912	0.9200	0.8900	0.8000	0.0154

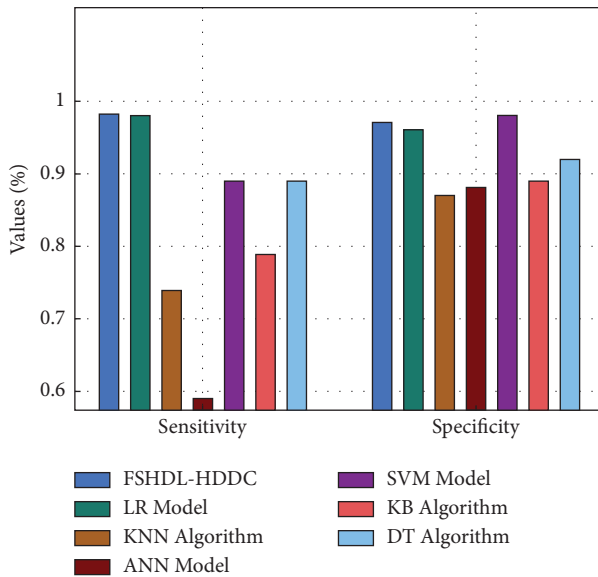


FIGURE 7: Comparative analysis of the FSHDL-HDDC technique in terms of  $Sen_y$  and  $Spec_y$ .

system. The data showed that the NB, KNN, and ANN models failed to give accurate HD classification results when  $sen_y$  and  $spec_y$  had lower values. Furthermore, the performance of the DT and LR models has been slightly enhanced with moderate  $sen_y$  and  $spec_y$  values. Despite the SVM model's efforts to produce outcomes that were close to

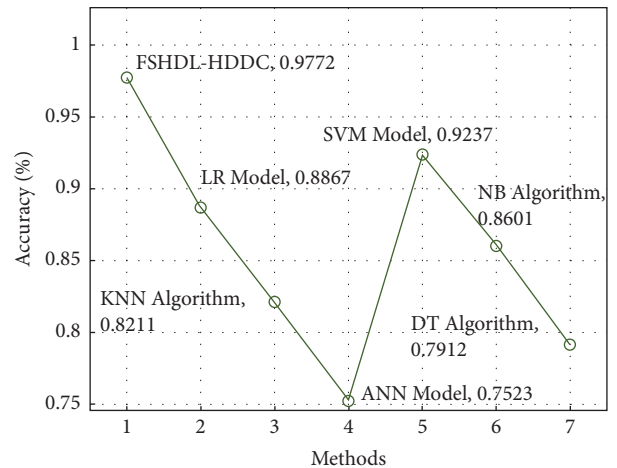


FIGURE 8: Accuracy analysis of the FSHDL-HDDC approach with existing manner.

ideal, the proposed FSHDL-HDDC strategy outperformed the other approaches, with maximum  $sen_y$  and  $spec_y$  values of 0.9712 and 0.9823, respectively.

Figure 8 depicts a comparison between the FSHDL-HDDC methodology and more contemporary techniques. With lower values of  $acc_y$ , the DT, KNN, and ANN classification models failed to produce useful HD classification results [36]. After that, with modest values of  $acc_y$ , the performance of the NB and LR techniques is somewhat enhanced. However, the FSHDL-HDDC strategy

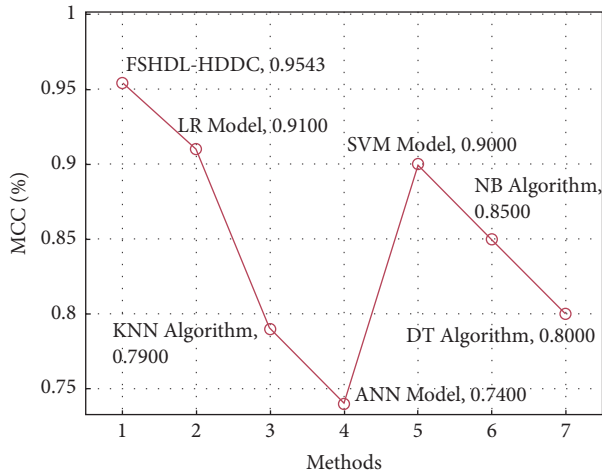


FIGURE 9: MCC analysis of the FSHDL-HDDC manner with existing algorithm.

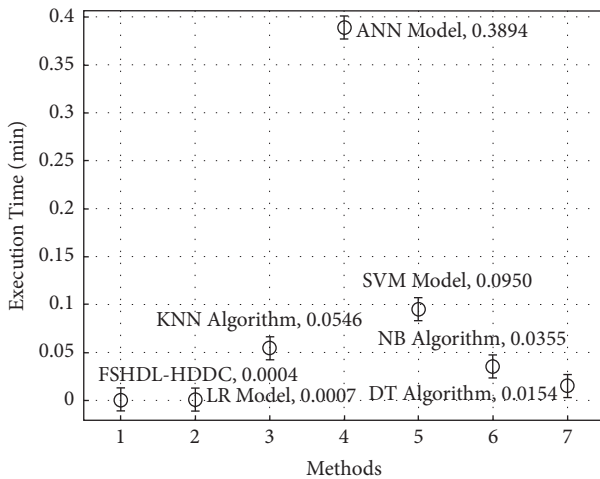


FIGURE 10: Execution time analysis of the FSHDL-HDDC approach with existing manners.

demonstrated the other ways with the greatest accuracy of 0.9772, although the SVM methodology aimed to obtain nearly ideal results.

Figure 9 showcases a detailed MCC analysis of the FSHDL-HDDC approach with recent manners. The outcomes outperformed the DT, KNN, and ANN manners have attained ineffective HD classification outcomes with minimal values of MCC.

Along with that, the NB and SVM techniques have achieved slightly enhanced performance with moderate values of MCC. Similarly, the LR technique has tried to accomplish near optimum outcomes. The proposed FSHDL-HDDC methodology has demonstrated other manners with a higher MCC of 0.9543.

The execution time analysis of the FSHDL-HDDC technique is shown in Figure 10 lastly. The graph shows that the ANN approach has produced poor results with an elevated ET of 0.3894 seconds. The ETs obtained by applying the SVM, KNN, and NB models were slightly lower, at 0.0950 min, 0.0546 min, and 0.0355 min, respectively. The

LR and DT models have made attempts to reach ETs of 0.0007 min and 0.0154 min, respectively, in the interim. The FSHDL-HDDC strategy presented has surpassed the prior techniques with a decreased ET of 0.0004 min. The tables and graphs above make it abundantly evident that the FSHDL-HDDC approach can identify and classify HD in the context of e-healthcare.

## 5. Conclusion

An effective FSHDL-HDDC technique has been developed in this study to recognise and classify HD in the context of e-healthcare. The proposed FSHDL-HDDC technique encompasses preprocessing (missing value replacement and data normalisation), EO-SSA-based feature selection, and ACNN-LSTM-based classification. Therefore, the main problems with these previous methods are their poor accuracy and lengthy computation times, which may be caused by the inclusion of unnecessary features in the dataset. To detect HD properly, new methods are required in order to address these issues. The design of the EO-SSA technique helps to properly choose the useful set of features, thereby improving the classification accuracy and reducing the computational complexity. To show off the improved performance of the FSHDL-HDDC technique, a number of simulations using benchmark HD datasets are run, and the results are then thoroughly examined. The FSHDL-HDDC technology is better than other current techniques, according to several simulation results. In the future, the ACNN-LSTM approach's hyperparameters will be optimised by using metaheuristic techniques. The basis for metaheuristic algorithms could be either demographic data or natural cues because metaheuristics optimise real issues. The use of Iterated Local Search, Hill Climbing, Genetic Algorithms, Simulated Annealing, Tabu Search, and Ant Colony Optimization can be used to address complex scheduling, space allocation, and clustering problems.

## Data Availability

The data used to support the findings of the study can be obtained from the corresponding author upon request.

## Conflicts of Interest

The authors declare that they have no conflicts of interest.

## References

- [1] F. Wang, H. Zhu, X. Liu et al., "Privacy-preserving collaborative model learning scheme for E-healthcare," *IEEE Access*, vol. 7, pp. 166054–166065, 2019.
- [2] E. S. Madhan, S. Neelakandan, and R. Annamalai, "A novel approach for vehicle type classification and speed prediction using deep learning," *Journal of Computational and Theoretical Nanoscience*, vol. 17, no. 5, pp. 2237–2242, 2020.
- [3] J. Hua, H. Zhu, F. Wang et al., "CINEMA: efficient and privacy-preserving online medical primary diagnosis with skyline query," *IEEE Internet of Things Journal*, vol. 6, no. 2, pp. 1450–1461, 2019.

- [4] C.-F. Tsai, W.-C. Lin, and S.-W. Ke, "Big data mining with parallel computing: a comparison of distributed and map-reduce methodologies," *Journal of Systems and Software*, vol. 122, pp. 83–92, Dec. 2016.
- [5] S. Neelakandan and R. Annamalai, "Efficient solution to the waste management process using IOT for smart trash can," *Journal of Emerging Technologies and Innovative Research*, vol. 5, no. 6, June 2018.
- [6] K. Wei, L. Zhang, Y. Guo, and X. Jiang, "Health monitoring based on Internet of medical Things: architecture, enabling technologies, and applications," *IEEE Access*, vol. 8, pp. 27468–27478, 2020.
- [7] G. Joyia, R. Liaqat, A. Farooq, and S. Rehman, "Internet of medical Things (IOMT): applications, benefits and future challenges in healthcare domain," *Journal on Communications*, vol. 12, pp. 240–247, Jan. 2017.
- [8] D. Paulraj, "An automated exploring and learning model for data prediction using balanced CA-svm," *Journal of Ambient Intelligence and Humanized Computing*, Springer, ISSN 1868-5137 (online), Published Online: April 2020, pp. 1–12, 2020.
- [9] S. Satpathy, P. Mohan, S. Das, and S. Debbarma, "A new healthcare diagnosis system using an IoT-based fuzzy classifier with FPGA," *The Journal of Supercomputing*, vol. 76, no. 8, pp. 5849–5861, 2020.
- [10] M. A. Khan and F. Algarni, "A healthcare monitoring system for the diagnosis of heart disease in the IoMT cloud environment using MSSO-ANFIS," *IEEE Access*, vol. 8, pp. 122259–122269, 2020.
- [11] A. U. Haq, J. P. Li, J. Khan et al., "Intelligent machine learning approach for effective recognition of diabetes in E-healthcare using clinical data," *Sensors*, vol. 20, no. 9, p. 2649, 2020.
- [12] Y. Meng, W. Speier, C. Shufelt et al., "A machine learning approach to classifying self-reported health status in a cohort of patients with heart disease using activity tracker data," *IEEE journal of biomedical and health informatics*, vol. 24, no. 3, pp. 878–884, 2020.
- [13] E. K. Hashi and M. S. U. Zaman, "Developing a hyperparameter tuning based machine learning approach of heart disease prediction," *Journal of Applied Science & Process Engineering*, vol. 7, no. 2, pp. 631–647, 2020.
- [14] A. Kishor and W. Jeberson, "Diagnosis of heart disease using Internet of things and machine learning algorithms," in *Proceedings of the Second International Conference on Computing, Communications, and Cyber-Security*, pp. 691–702, Springer, Singapore, 2021.
- [15] J. P. Li, A. U. Haq, S. U. Din, J. Khan, A. Khan, and A. Saboor, "Heart disease identification method using machine learning classification in e-healthcare," *IEEE Access*, vol. 8, pp. 107562–107582, 2020.
- [16] D. K. Jain, P. Boyapati, J. Venkatesh, and M. Prakash, "An intelligent cognitive-inspired computing with big data analytics framework for sentiment analysis and classification," *Information Processing & Management*, vol. 59, no. 1, Article ID 102758, 2022.
- [17] D. Zhang, Y. Chen, Y. Chen et al., "Heart disease prediction based on the embedded feature selection method and deep neural network," *Journal of Healthcare Engineering*, pp. 1–9, 2021.
- [18] P. V. Rajaraman and M. Prakash, "Intelligent deep learning based bidirectional long short term memory model for automated reply of e-mail client prototype," *Pattern Recognition Letters*, vol. 152, pp. 340–347, 2021.
- [19] R. Kamalraj, S. Neelakandan, M. Ranjith Kumar, V. Chandra Shekhar Rao, R. Anand, and H. Singh, "Interpretable filter based convolutional neural network (IF-CNN) for glucose prediction and classification using PD-SS algorithm," *Measurement*, vol. 183, p. 109804, 2021.
- [20] R. Detrano, A. Janosi, W. Steinbrunn et al., "International application of a new probability algorithm for the diagnosis of coronary artery disease," *The American Journal of Cardiology*, vol. 64, no. 5, pp. 304–310, 1989.
- [21] M. Gudadhe, K. Wankhade, and S. Dongre, "Decision support system for heart disease based on support vector machine and artificial neural network," in *Proceedings of the 2010 International Conference on Computer and Communication Technology (ICCCCT)*, pp. 741–745, IEEE, Allahabad, India, 17–19 September 2010.
- [22] H. Kahramanli and N. Allahverdi, "Design of a hybrid system for the diabetes and heart diseases," *Expert Systems with Applications*, vol. 35, no. 1-2, pp. 82–89, 2008.
- [23] T. Kavitha, P. P. Mathai, C. Karthikeyan et al., "Deep learning based capsule neural network model for breast cancer diagnosis using mammogram images," *Interdisciplinary Sciences: Computational Life Sciences*, vol. 14, no. 1, pp. 113–129, 2021.
- [24] G. Reshma, C. Al-Atroshi, V. Kumar Nassa et al., "Deep learning-based skin lesion diagnosis model using dermoscopic images," *Intelligent Automation & Soft Computing*, vol. 31, no. 1, pp. 621–634, 2022.
- [25] M. Jain, V. Singh, and A. Rani, "A novel nature-inspired algorithm for optimization: squirrel search algorithm," *Swarm and Evolutionary Computation*, vol. 44, pp. 148–175, 2019.
- [26] S. Palaniappan and R. Awang, "Intelligent heart disease prediction system using data mining techniques," in *Proceedings of the 2008 IEEE/ACS international conference on computer systems and applications*, pp. 108–115, IEEE, Doha, Qatar, 2018.
- [27] S. Neelakandan, J. Rene Beulah, L. Prathiba, G. L. N. Murthy, E. F. Irudaya Raj, and N. Arulkumar, "Blockchain with deep learning-enabled secure healthcare data transmission and diagnostic model," *International Journal of Modeling, Simulation, and Scientific Computing*, 2022.
- [28] P. R. Prakash, D. Anuradha, J. Iqbal, M. G. Galety, R. Singh, and S. Neelakandan, "A novel convolutional neural network with gated recurrent unit for automated speech emotion recognition and classification," *Journal of Control and Decision*, pp. 1–10, 2022.
- [29] C. Ai-Atroshi, J. Rene Beulah, K. K. Singamaneni, C. Pretty Diana Cyril, S. Neelakandan, and S. Velmurugan, "Automated speech based evaluation of mild cognitive impairment and Alzheimer's disease detection using with deep belief network model," *International Journal of Healthcare Management*, pp. 1–11, 2022.
- [30] S. Raghavendra, A. Harshavardhan, S. Neelakandan, R. Partheepan, R. Walia, and V. Chandra Shekhar Rao, "Multilayer stacked probabilistic belief network-based brain tumor segmentation and classification," *International Journal of Foundations of Computer Science*, pp. 1–24, 2022.
- [31] A. Harshavardhan, P. Boyapati, S. Neelakandan, A. A. Abdul-Rasheed Akeji, A. K. Singh Pundir, and R. Walia, "LSGDM with biogeography-based optimization (BBO) model for healthcare applications," *Journal of Healthcare Engineering*, vol. 2022, pp. 1–11, 2022.
- [32] E. O. Olaniyi, O. K. Oyedotun, and K. Adnan, "Heart diseases diagnosis using neural networks arbitration," *International Journal of Intelligent Systems and Applications*, vol. 7, no. 12, pp. 75–82, 2015.

- [33] Y. Wang and T. Du, "An improved squirrel search algorithm for global function optimization," *Algorithms*, vol. 12, no. 4, p. 80, 2019.
- [34] X. Wu, Y. Zhou, and Y. Lu, "Elite opposition-based water wave optimization algorithm for global optimization," *Mathematical Problems in Engineering*, 2017.
- [35] A. Adamu, M. Abdullahi, S. B. Junaidu, and I. H. Hassan, "An hybrid particle swarm optimization with crow search algorithm for feature selection," *Machine Learning with Applications*, vol. 6, Article ID 100108, 2021.
- [36] S. K. Prabhakar and D. O. Won, "Medical text classification using hybrid deep learning models with multihead attention," *Computational Intelligence and Neuroscience*, 2021.