

Research Article

A Biologically Inspired Approach to Frequency Domain Feature Extraction for EEG Classification

Nurhan Gursel Ozmen ¹, Levent Gumusel,¹ and Yuan Yang ²

¹Department of Mechanical Engineering, Karadeniz Technical University, 61080 Trabzon, Turkey

²Department of Physical Therapy and Human Movement Sciences, Feinberg School of Medicine, Northwestern University, Chicago, IL, USA

Correspondence should be addressed to Nurhan Gursel Ozmen; gnurhan@ktu.edu.tr

Received 5 July 2017; Accepted 21 December 2017; Published 23 January 2018

Academic Editor: Michele Migliore

Copyright © 2018 Nurhan Gursel Ozmen et al. This is an open access article distributed under the Creative Commons Attribution License, which permits unrestricted use, distribution, and reproduction in any medium, provided the original work is properly cited.

Classification of electroencephalogram (EEG) signal is important in mental decoding for brain-computer interfaces (BCI). We introduced a feature extraction approach based on frequency domain analysis to improve the classification performance on different mental tasks using single-channel EEG. This biologically inspired method extracts the most discriminative spectral features from power spectral densities (PSDs) of the EEG signals. We applied our method on a dataset of six subjects who performed five different imagination tasks: (i) resting state, (ii) mental arithmetic, (iii) imagination of left hand movement, (iv) imagination of right hand movement, and (v) imagination of letter “A.” Pairwise and multiclass classifications were performed in single EEG channel using Linear Discriminant Analysis and Support Vector Machines. Our method produced results (mean classification accuracy of 83.06% for binary classification and 91.85% for multiclassification) that are on par with the state-of-the-art methods, using single-channel EEG with low computational cost. Among all task pairs, mental arithmetic versus letter imagination yielded the best result (mean classification accuracy of 90.29%), indicating that this task pair could be the most suitable pair for a binary class BCI. This study contributes to the development of single-channel BCI, as well as finding the best task pair for user defined applications.

1. Introduction

The idea of people being able to control their brain rhythm by performing specific mental tasks constitutes the main research focus on electroencephalogram (EEG) based mental control tasks, which gave birth to the brain-computer interface (BCI) [1]. BCI provides the user, the communication, and control possibility that is independent of peripheral nerves and muscles [2]. A typical BCI system consists of four stages: signal acquisition, feature extraction, classification, and transformation to an output device [3]. To build a well-performing BCI, feature extraction is an important aspect. Several studies suggested that the use of an efficient feature extraction method may improve the final performances more than using an efficient classifier [4].

Despite the large numbers of feature extraction methods that have been developed for BCIs [5–14], the performances of current BCIs are still not satisfactory. Thus, the selection

of efficient features is still a key challenge to be addressed [15, 16]. Due to the volume conduction effect and artefacts, EEG signal has a poor signal-to-noise ratio [17]. Commonly used feature extraction methods for BCIs, such as common spatial pattern (CSP) filter [18] and independent component analysis (ICA) [13], usually require multiple EEG channels for gathering enough information for precise decoding. Multichannel EEG recording reduces the portability of daily use BCI and therefore constitutes the main drawback for end users [19]. To address these problems, many methods have been proposed in the literature including electrode reduction algorithms and feature extraction methods based on a few electrodes [16, 19–24]. However, most of them either have high computational complexity [20–22] or are only suitable for specific motor imagery tasks [16, 19, 23, 24]. For online BCI applications, a quick response time is a key issue and thus the efficient feature extraction methods with low computational complexity and

minimum number of channels are highly desirable [16, 24]. Moreover, many studies tested feature extraction methods and classification algorithms only on BCI competition datasets [16, 19, 21–24]. Although BCI competitions provide a useful platform for testing and comparing different algorithms, subject specific property of BCI may prevent transplantation of algorithm performance from one dataset to another [19]. Therefore, for a real BCI application, it is advantageous to conduct BCI studies including data recording, instead of only using BCI competition datasets [25, 26].

In this paper, a novel *biologically inspired* approach using single EEG channel is proposed to extract frequency domain features. Based on the new approach, we aim to improve the classification performance and reduce the number of electrodes required in EEG classification. Frequency band features are a golden standard for EEG classification since they represent the rhythmic neural activity within the different frequency bands [4, 8, 9]. Changes in these rhythms due to movement or imagination of various tasks provide useful features for binary or multiclass classification [4]. Thus, our method considers the biological information in the EEG signal, which is different from the existing purely data-driven approaches in BCIs. Moreover, using small number of channels for EEG classification is advantageous since it takes less preparation time and is highly preferred by the end users [27]. That is important for daily use BCIs [23]. To the best of our knowledge, there are only few single-channel EEG studies in the literature and all of them are limited to a specific mental task (e.g., an imagination of foot movement or a visual task) [28–31].

Different from previous studies, our method greatly reduces channels to one single channel, and it is a stimulus-independent approach which can be used for different mental tasks. The proposed method is applied to a BCI experiment involving six healthy subjects for classifying five mental tasks, that is, resting state, mental arithmetic, motor imagery of left and right hand, and visual imagination of letter “A.” This study is a part of a research project to build a daily use BCI system for disabled people [32, 33]. A pairwise and a multiclass classification were performed using the two commonly used classifiers, that is, Linear Discriminant Analysis (LDA) and Support Vector Machines (SVM), to find the most suitable task pair for BCI. Performance of our method is also compared with the two existing methods which are commonly used to extract the features for EEG classifications [34, 35]. This paper is organized as follows. Section 2 gives a brief description of data acquisition including the experimental design and data preprocessing. Section 3 presents the proposed feature extraction approach and Section 4 gives a short description of the data classification. In Section 5, the results of the experiment are shown along with a discussion. Section 6 concludes the whole study and proposes ideas for future work.

2. Data Acquisition

2.1. Experiment and Data Acquisition

2.1.1. Subjects. Six healthy, right-handed subjects (one female) with a mean (standard deviation, SD) age of 30.5

(14.4) participated in the experiments. Except Subject 1, none of the subjects have any experience in BCI experiments. All subjects provided written informed consent before the experiments. All procedures performed by the subjects were in accordance with the ethical standards of the institutional research committee and with the 1964 Helsinki declaration and its later amendments or comparable ethical standards.

2.1.2. Procedure. The subjects were seated on a comfortable chair in a dim lighted, silent room during the recordings. Before each trial, they were informed about the type of task (resting state, multiplication, right hand, etc.) by auditory cues. During the task, they were required to close their eyes to reduce the artefacts from eye blinking/movements. The sequence of mental and motor tasks was as follows: resting state, mental arithmetic, imagination of right hand movement, imagination of left hand movement, and visual imagination of letter “A” [32, 33, 36]. Each trial lasted 10 seconds and the interval between consecutive tasks was about 3–4 seconds. The first 2 seconds in trial were the task preparation time for the subject. The experiments are comprised of 5 experimental runs of 20 trials each (100 trials per task in total). The details of each task are provided below:

- (i) *Resting state (RS)*: the subjects were asked to sit and relax as much as possible without thinking anything.
- (ii) *Mental arithmetic task (MA)*: the subjects were given a two-digit multiplication problem to solve in mind without vocalizing or any movement (e.g., $24 \times 76 = ?$). The problems were not repeated. After the trial, the subject verified whether he reached the solution or not.
- (iii) *Right hand imagination task (RH)*: the subjects were told to imagine right hand movement.
- (iv) *Left hand imagination task (LH)*: the subjects were required to imagine left hand movement.
- (v) *Letter “A” imagination task (LA)*: the subjects were told to imagine the letter “A” in their mind.

2.1.3. Recordings. EEG data were recorded from the subjects during the experiment, using a 64-Channel Biosemi ActiveTwo EEG system with Ag/AgCl electrodes [32, 33]. The electrodes were placed according to the international 10–20 electrode placement system using Cz as the reference. The grounding electrodes CMS and DRL were mounted on the back of the head. The EEG signals were sampled at 512 Hz.

2.1.4. Channel Selection. We selected 9 channels from different brain regions, that is, frontal (F3/4), central (C3/4), parietal (P3/4, Pz), and occipital (O1/2) areas, for signal analysis. Feature extraction and classification were performed at each single channel.

2.2. Data Preprocessing. The first 2-second task preparation period was excluded from the entire 10 seconds in each trial. The remaining 8-second signal was divided into two parts, which resulted in 100×2 epochs total for each task

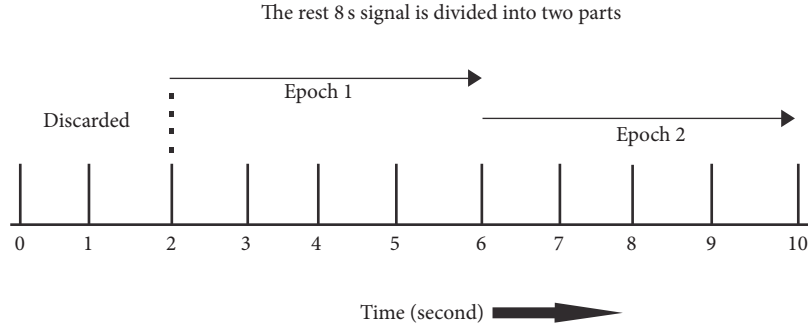


FIGURE 1: Data segmentation. In each trial, the first 2-s task preparation period was excluded and the remaining 8-second signal was divided into two parts, which resulted in 100×2 epochs total for each task.

(see Figure 1). The EEG signal was filtered using the 10th-order 50 Hz low-pass digital Butterworth filter.

3. Feature Extraction

The general idea of feature extraction is that the high dimensional input data are transformed into a reduced representation set of features while containing the relevant information from the input data. Among feature extraction methods, power spectral density (PSD) analysis is a commonly used method as it extracts the frequency characteristics of signals which enable the detection of mental and motor tasks [4]. Most of the previous studies used this method for investigating epileptics and hypnosis [37–41]. Generally, PSD approaches demonstrate the most consistent robustness and effectiveness in extracting the distinctive spectral patterns for accurately discriminating between motor imagery EEGs [42]. Here, we proposed a novel feature extraction method relying on the frequency distributions of the signal's PSD. In this method, we first computed the PSD based on Welch Periodogram: a hamming window of 400 points was used with a 50% overlap between adjacent windowed sections. We visually inspected the whole frequency range for all subjects. Alpha and beta frequencies are important characteristics of normal EEG activity at rest, and any change of these rhythms might be interpreted as a cortical functioning or information processing indication [43, 44]. In line with previous studies [43, 44], we found that there is a stable pattern in the PSD with different amplitudes for all subjects and for all tasks. This biologically phenomenon allows a classification between different mental tasks. Based on this biological phenomenon, we extracted three features from the alpha (8–13 Hz) and beta (13–30 Hz) bands of PSD by searching the local peak values in the alpha and beta bands separately. The first feature is selected as the highest PSD peak value in the alpha band, which is indicated as f_1 in Figure 2. The second and third features are the two highest PSD peak values in the beta band, which are indicated as f_2 and f_3 in Figure 2.

4. Classification

In general, classification is defined as assigning a predefined class to each instance. The goal of classification is to accurately predict the target class for each case in the data. Similar

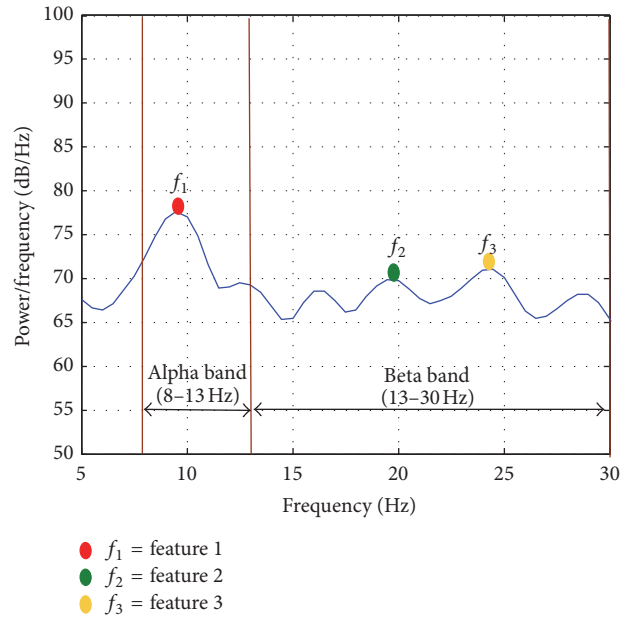


FIGURE 2: The proposed feature extraction scheme. The curve indicates the PSD of EEG in alpha and beta bands. We selected the highest PSD peak value in the alpha band and the two highest PSD peak values in the beta band as the features.

to many previous studies on signal classification, we first dealt with a binary classification problem and then extended the study to multiclass cases. LDA and SVM are used for classification, since they have been known to be efficient classifiers for BCI [17].

4.1. Linear Discriminant Analysis (LDA). Linear discriminant analysis (LDA) is one of the popular classification algorithms and has been successfully applied to many pattern recognition and EEG data classification problems [3, 42]. LDA projects the data onto a lower-dimensional vector space such that the ratio of the between-class distance to the within-class distance is maximized, in order to achieve maximum discrimination. The optimal projection can be readily computed by applying the eigendecomposition to scatter matrices. In this study, we implemented a pairwise and a multiclass LDA for classification.

4.2. Support Vector Machines (SVM) Classifier. SVM is a strong classifier which has demonstrated its excellent generalization properties in various applications, including BCIs [12, 45]. The basic idea of SVM is to find the optimal separation hyperplane by maximizing the margin. According to [46], general output of a binary SVM classifier can be computed by the following expression:

$$y = \text{sign} \left(\sum_{i=1}^N \alpha_i y_i k(x_i, x_j) + b \right). \quad (1)$$

Here $\alpha_i \geq 0$ are Lagrangian multipliers obtained by solving a quadratic optimization problem, b is the bias, and $k(x_i, x_j)$ is a kernel function. The most commonly used kernel function is the Gaussian RBF function which is also used in this study and given by

$$k(x_i, x_j) = \exp \left(\frac{-\|x_i - x_j\|^2}{2\sigma^2} \right), \quad (2)$$

where σ is a user defined parameter showing the width of the kernel function.

In this study, different kernel function types such as exponential and base have been tried, and we found that the best results are obtained with RBF function. Therefore, only the result with RBF function is provided in this paper. We implemented the pairwise SVM to multiclass scenario and obtained the classification performances for both problems.

4.3. Data Classification. Data from 9 channels were analysed separately in order to express the classification accuracy in single channel. The classification algorithms discriminated the test data of an unknown task between the given two tasks. Each class had 200 epochs. We randomly chose 50 epochs per class as the training dataset and left the rest as the independent testing dataset. The classifiers were trained using the training dataset. In the testing session we randomly picked up 50 epochs from the testing dataset to test the classification performance. This process was repeated 100 times to get the final classification performance with mean classification accuracy.

Multiclass classification was performed for discrimination of five different tasks. The training and testing methodology followed the same steps in binary classification. We first did pairwise classification for each channel. Then the class label of each channel was attained by max-win voting. Moreover, we calculated the classification accuracy (CA) for four channels (F3/4, C3/4). Based on the CA, the final class for that testing data was predicted by means of max-win voting strategy. In order to see the classification performance of different tasks, we also report individual CA for each task.

5. Results and Discussion

5.1. Feature Extraction Results. The PSD waveforms of six different subjects have consistency in the general characteristics of each mental and motor task. Figure 3 shows a randomly selected single-trial PSD of all subjects at channel F3 for Task

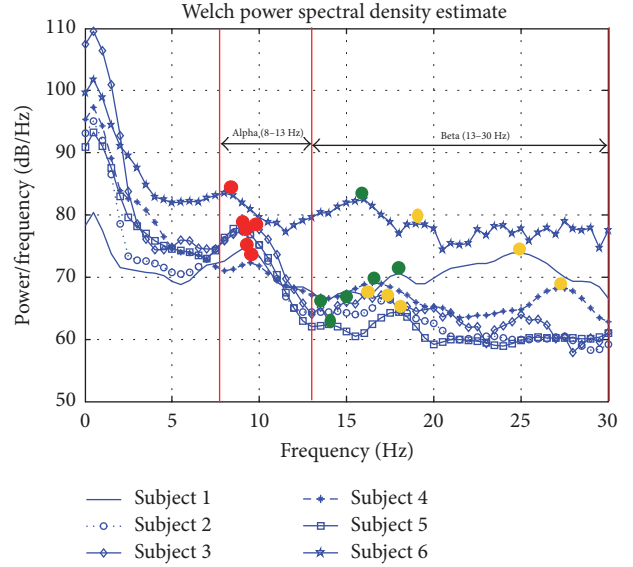


FIGURE 3: PSD during task RS in channel F3 for all subjects. Red dots indicate feature 1 (the alpha peak), green dots indicate feature 2 (the first peak in the beta band), and yellow dots indicate feature 3 (the second peak in the beta band).

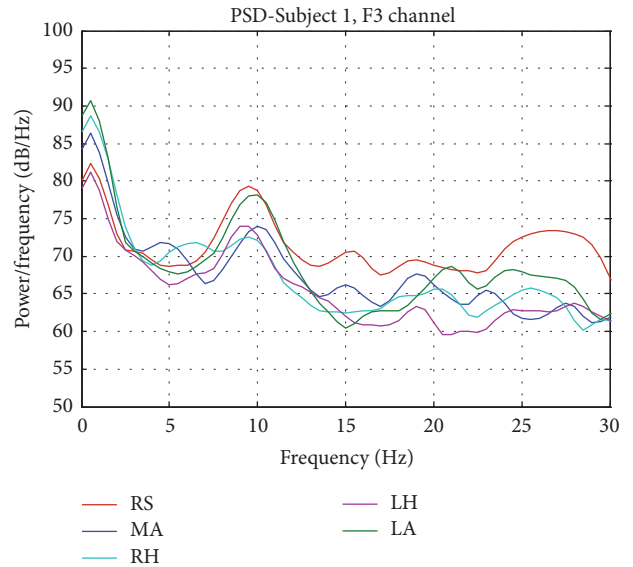


FIGURE 4: PSD for all five tasks in channel F3 for Subject 1. The difference between tasks is shown in PSD.

RS. A clear alpha (8–13 Hz) peak is shown for each subject, though there are individual differences of its amplitude. We observed two peaks in beta band, and they have lower amplitude values compared to the peak at the alpha band. The PSD for different tasks at channel F3 for Subject 1 is given in Figure 4. The difference between tasks is shown in PSD, where the alpha peak has the highest amplitude for Task RS. Similar to Task RS, Task LA has higher alpha peak compared to motor imagery tasks (Tasks LH and RH) and Task MA. Beta peaks decrease for the motor imagery tasks compared to other tasks. Rhythmic neural activities within

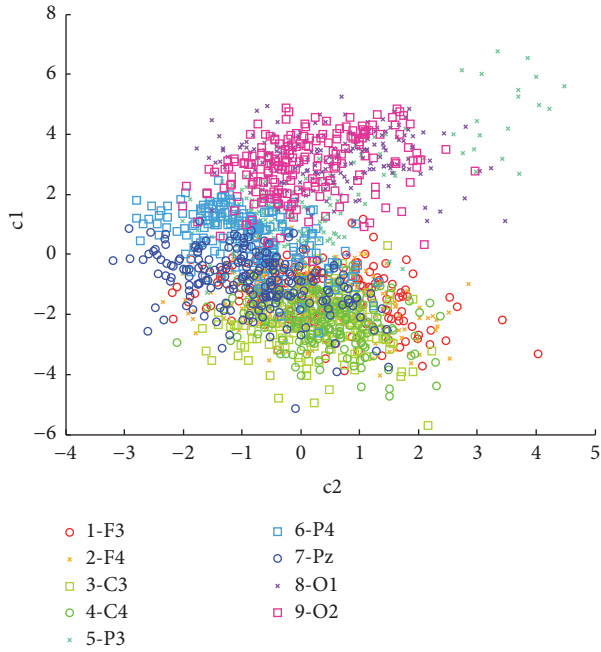


FIGURE 5: Feature difference between channels for Subject 1. Each channel has different behaviour for the same feature combination.

the alpha (8–13 Hz) and beta (13–30 Hz) frequency bands are modulated during imagined mental and motor tasks. Changes in these rhythms provide the neurophysiologic support for extracting the features from the alpha and beta bands. Results from previous studies indicate that alpha wave amplitudes vary with the subject’s attention to mental tasks performed with the eyes closed [28, 32, 33]. Beta rhythms are modulated when the subjects are alert and attentive to external stimuli or exert a motor imagery task [28–30]. Specifically, imagination of hand movement typically induces a power decrease in the beta rhythms (namely, event-related desynchronization) over the corresponding functional areas in the sensorimotor cortex [30]. Our findings are consistent with the neurophysiologic knowledge, hence supporting our idea that the selected features would discriminate different mental and motor tasks.

In order to see whether the selected channels are significantly different from each other on the extracted feature set, a one-way-MANOVA test was performed. The feature difference between channels is shown in Figure 5 for a representative subject. The canonical variables $c1$ and $c2$ are linear combinations of the features ($a1y$ in alpha band and $a2y$ and $a3y$ in beta band) for each channel. The null hypothesis (i.e., no difference between channels) is rejected with $p < 0.05$. There was a statistically significant difference between channels based on three features, d (estimate of the dimension of the group means) = 2, $p < 0.005$; Wilk’s lambda = [0.162; 0.810; 0.99]; and chi-square distribution = [3263; 376; 8]. This difference indicates different discriminative abilities in EEG classification.

In Figure 6, the dendrogram shows the distance between channels. The largest distance was observed between C3 and O1 channels for RS, showing that channels in distant

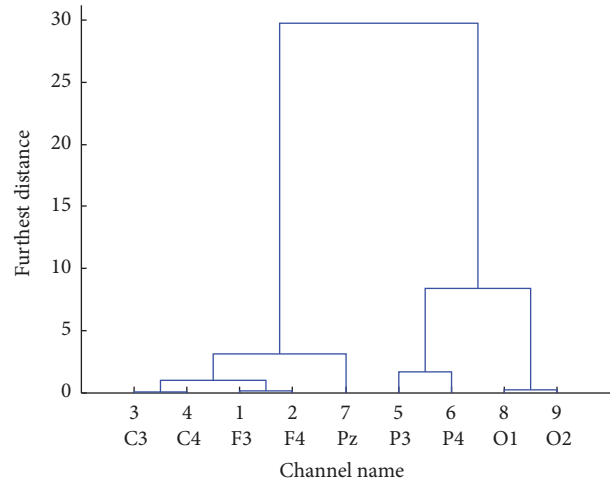


FIGURE 6: The distances between channels of Subject 1 for RS. A larger distance indicates a big difference between two channels.

brain regions may carry very different information even for the same task. This result indicates the necessity of channel selection in EEG classification.

5.2. Classification Results. Table 1 shows the classification accuracies of all six subjects at the best channel for different task pairs. Using only a single channel, our method can achieve fairly good classification accuracy with SVM (mean accuracy over all tasks and all subject is 83.06%), which indicates the effectiveness of our method in feature extraction and electrode reduction. Although Subject 1 has more experience in using BCI than other subjects, who are naïve to BCI, we did not find significant difference between the performances of Subject 1 and others. As a result, the user’s training time can be shortened when using our method. Comparison between using two popular classifiers, that is, SVM and LDA, showed that our method worked better with SVM using a Gaussian kernel.

Additionally, we examined the plot of sensitivity (true positive rate) versus 1-specificity (false positive rate), namely, receiver operating characteristics (ROC) curve and the area under the curve (AUC) [47] for evaluating the reliability of classification procedure. A sample graph for the performance of Subject 1 on RS versus MA is given in Figure 7, where the point (0, 1) indicates the perfect classification. We can see that classification performance from channel F4 (red line in Figure 7) is in the upper left corner of the ROC graph. This result is in line with Tables 1 and 3, where F4 is the best channel for this task pair and this subject, indicating reliability of our classification procedure.

From Table 1, we also can see that the best channel varies with the different task pairs for the same subject. For example, for subject 1 when using SVM as the classifier, the best channel for RS versus MA is F4, while for LH versus LA it is P4. A plausible explanation is that different brain regions have different functions that allow performing different tasks. Although there is a common understanding that individual optimization might be needed for finding the best electrode

TABLE 1: Classification results for the features extracted by our method. The better classification performances are highlighted in bold for each subject and each task pair. The best classification performances among different task pairs are underlined.

Task pairs	Classifiers	Accuracy %						Mean over subjects
		Subjects						
		S1	S2	S3	S4	S5	S6	
RS&MA	LDA	95.10 (F3)	71.38 (F3)	64.76 (O2)	56.12 (F3)	57.56 (O1)	70.76 (F4)	69.25
	SVM	98.36 (F4)	84.38 (F3)	68.76 (F3)	89.96 (P3)	80.84 (O1)	87.20 (F4)	84.91
RS&RH	LDA	86.52 (F3)	61.66 (P3)	57.08 (O2)	54.84 (C3)	56.08 (P4)	62.2 (F4)	63.06
	SVM	92.40 (F4)	87.56 (P3)	77.00 (C4)	90.12 (P3)	79.00 (C3)	83.80 (O2)	84.98
RS&LH	LDA	88.88 (C4)	60.0 (C4)	56.08 (F3)	59.8 (P3)	56.16 (P4)	60.88 (F4)	63.63
	SVM	94.74 (C4)	70.86 (F3)	58.52 (F4)	90.88 (P3)	88.96 (C3)	86.20 (O2)	81.69
RS&LA	LDA	72.88 (F3)	72.70 (P3)	60.82 (O2)	60.76 (P3)	56.64 (C4)	62.2 (F4)	64.33
	SVM	87.18 (P3)	96.50 (P3)	64.20 (C4)	91.20 (P3)	87.92 (P3)	89.92 (C4)	86.15
MA&RH	LDA	66.12 (O2)	57.76 (F3)	62.42 (O2)	62.08 (P3)	64.48 (O2)	62.88 (O2)	62.62
	SVM	81.08 (O2)	72.08 (P3)	72.36 (F3)	90.44 (P3)	90.24 (O2)	86.24 (O2)	82.07
MA&LH	LDA	68.64 (P3)	58.56 (F3)	65.24 (F3)	57.64 (P3)	61.32 (O2)	62.04 (F4)	62.24
	SVM	82.34 (O2)	78.60 (C4)	94.52 (P4)	90.84 (P3)	88.20 (O1)	98.20 (F4)	88.78
MA&LA	LDA	73.42 (F4)	68.24 (P3)	60.96 (F4)	58.56 (O2)	62.44 (P3)	66.44 (F4)	65.01
	SVM	84.16 (F4)	94.98 (P3)	87.50 (P4)	90.80 (P3)	91.08 (O1)	93.26 (O2)	90.29
RH&LH	LDA	52.90 (C4)	55.56 (C3)	63.72 (F3)	54.08 (C4)	53.72 (F3)	60.96 (O2)	56.82
	SVM	64.18 (C4)	67.92 (P3)	65.62 (Pz)	80.88 (C4)	78.48 (P3)	82.56 (P3)	73.27
RH&LA	LDA	68.24 (C4)	67.14 (F4)	63.44 (F4)	55.48 (O2)	57.08 (O1)	61.72 (F4)	62.18
	SVM	76.48 (F3)	96.08 (P3)	60.34 (F4)	80.32 (C3)	77.24 (P3)	90.0 (F4)	80.07
LH&LA	LDA	59.00 (P4)	71.96 (F4)	69.46 (F4)	55.56 (O2)	56.96 (P4)	63.52 (P4)	62.74
	SVM	76.80 (P4)	95.32 (F3)	67.66 (C3)	80.20 (C4)	68.44 (F3)	82.00 (Pz)	78.40
Mean over tasks	LDA	73.17	64.49	62.39	57.49	58.24	63.36	63.19
	SVM	83.77	84.43	71.65	87.56	83.04	87.94	83.06

for few channel based BCIs [19], we did find that some brain regions are important for differentiating some tasks. In our experiment, we found that four subjects have the highest performance at the frontal area of the brain (F3 and F4) for

RS versus MA, indicating frontal area may be an important region for distinguishing these two tasks. For the pair RS versus LA, the highest classifications (96.5%) are obtained at the parietal (P3) region for four subjects and at central

TABLE 2: Comparison of the mean SVM performance (over all task pairs) of our method with the existing methods [34, 35].

	S1	S2	S3	S4	S5	S6	Mean over subjects
Our method	83.77	84.43	71.65	87.56	83.04	87.94	83.06
Min-max-mean-std [33]	71.95	83.27	73.46	70.00	68.11	66.67	72.24
Band power [34]	73.3	83.5	82.2	62.3	67.2	77.0	74.25

TABLE 3: Accuracy, sensitivity, and specificity values with standard deviations for RS versus MA tasks of Subject 1 with SVM method.

	F3	F4	C3	C4	P3	P4	Pz	O1	O2
Accuracy%	96.80 ± 1.66	96.76 ± 1.54	94.17 ± 1.95	92.69 ± 2.42	84.93 ± 3.14	92.44 ± 2.08	91.71 ± 2.17	86.82 ± 2.51	84.31 ± 2.96
Sensitivity%	96.27 ± 2.65	95.11 ± 2.73	93.80 ± 2.74	91.39 ± 3.84	78.60 ± 3.98	90.38 ± 3.15	89.75 ± 2.95	82.00 ± 3.41	80.21 ± 3.90
Specificity%	97.47 ± 1.94	98.66 ± 1.55	94.71 ± 2.78	94.39 ± 3.08	95.46 ± 3.08	94.95 ± 2.68	94.09 ± 3.04	93.77 ± 3.32	90.31 ± 4.28

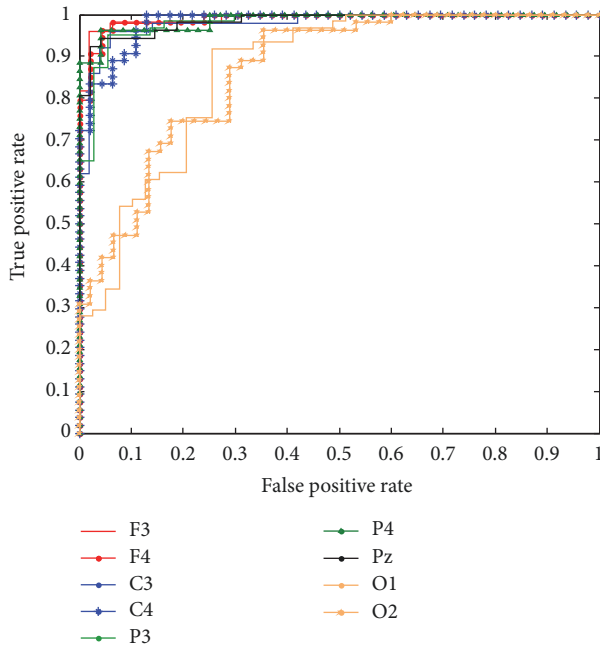


FIGURE 7: SVM ROC graphs of Subject 1 for 9 channels for RS versus MA. Accuracy is measured by the area under the ROC curve. An area of 1 represents a perfect test; an area of 0.5 represents a worthless test.

(C4) regions for the remaining two subjects. For motor tasks, mostly the parietal and central region electrodes (P3, Pz, and C4) have the highest classification performance. These findings might help to find a task-related region of interest for placing the electrode for single-channel BCI. Moreover, some biologically inspired models might be developed for understanding the emotional and cognitive brain processes. Finally, the proposed mental task based approach is a kind of stimulus-independent active BCI approach [48], in which the user has more freedom to attain a certain goal, such as neurofeedback systems, gaming applications, and e-learning platforms.

Different subjects have different task pairs for the best classification, indicating that the performance of binary-class BCI can be improved by individual optimization of task pairs. Identifying the best BCI task pairs for binary-class BCI

could be useful for user defined application, for example, neurogames. Among different task pairs, the task pair MA versus LA yields the best mean performance (90.29%) and its performance is close to the best one for most subjects except for the first subject (the subject with BCI experience). Thus, this pair might be the best option for binary-class BCI, in particular for naïve subjects. Nonetheless, the lowest accuracy achieved with the worst combination of task pairs, that is, mean accuracy 73% for RH&LH, is still comparable with the results reported by other single-channel BCI studies [49], indicating the effectiveness of our method.

Table 2 shows the comparisons between our method and two other feature extraction methods which are tested by using our data with Gaussian kernel-based SVM classifier. The method proposed in [34] is based on minimum, maximum, mean, and standard deviation of EEG data which tested single-channel performance, while the method in [35] is for extracting band power features of alpha and beta bands. Shown in Table 2, our method outperforms the existing methods with a mean classification accuracy of 83.06%, indicating that the proposed frequency domain features are more effective in single-channel classification. Table 3 shows the classification accuracy, sensitivity, and specificity values with standard deviations for RS versus MA tasks of Subject 1 with SVM method in order to show the reliability of the binary classification results. Accuracy is the ratio of the sum of true positives and true negatives to the total population which are in accordance with the classification performance.

The multiclass classification was tested with a pairwise and voting strategy [34, 46] using a few numbers of electrodes. The multiclass classification results with SVM are presented in Table 4 with the overall accuracy values. We achieved comparatively high classification results (91.85%). The experimental results of the proposed method from both binary and multiclass classification showed that this method can be performed in the context of BCI research. Nowadays, BCI systems are only used for patients and military purposes, but in the near future, more practical BCI applications like neurogames may take place in our daily life.

6. Conclusions

In this study, a new feature extraction method for EEG signals based on biologically inspired frequency domain

TABLE 4: Multiclass classification results with 4 electrodes, that is, F3, F4, C3, and C4.

Classifier	RS	MA	RH	LH	LA	Overall accuracy
SVM						
Accuracy%	100	100	87.04	72.66	99.56	91.85
Standard deviation	0.00	0.00	3.55	4.31	0.61	1.69

characteristics is presented, and its application in BCIs based on single channel is demonstrated. The experimental results indicate the interest of our method in improving the classification accuracy, minimizing the number of electrodes required in a BCI, and reducing the computational cost. The findings are consistent with the neurophysiologic knowledge. Comparison with the existing feature extraction methods shows that our method yields better mean performances which are on par with the state-of-art methods, using only a single-channel EEG and with low computational cost. Application of the proposed method for a multiclass classification further indicates the robustness and efficiency of our method. Additionally, the best task pair for designing a binary-class BCI is also concluded for a naïve subject, which is mental arithmetic versus letter imagination. In future, we will combine this method with some existing artefact removal algorithms for real BCI applications based on the single-channel EEG.

Ethical Approval

All procedures performed in studies involving human participants were in accordance with the ethical standards of the Institutional Research Committee and with the 1964 Helsinki declaration and its later amendments or comparable ethical standards.

Consent

Informed consent was obtained from all individual participants included in the study.

Conflicts of Interest

All of the authors declare that they have no conflicts of interest.

Acknowledgments

This work is part of a research project supported by Karadeniz Technical University Scientific Research Projects, no. 2007.112.03.3, Trabzon, Turkey.

References

- [1] J. J. Vidal, "Towards direct brain-computer communication," *Annual Review of Biophysics and Bioengineering*, vol. 2, pp. 157–180, 1973.
- [2] J. R. Wolpaw, N. Birbaumer, W. J. Heetderks et al., "Brain-computer interface technology: a review of the first international meeting," *IEEE Transactions on Neural Systems and Rehabilitation Engineering*, vol. 8, no. 2, pp. 164–173, 2000.
- [3] A. Bashashati, M. Fatourehchi, R. K. Ward, and G. E. Birch, "A survey of signal processing algorithms in brain-computer interfaces based on electrical brain signals," *Journal of Neural Engineering*, vol. 4, no. 2, pp. R32–R57, 2007.
- [4] N. Brodu, F. Lotte, and A. Lécuyer, "Exploring two novel features for EEG-based brain-computer interfaces: Multifractal cumulants and predictive complexity," *Neurocomputing*, vol. 79, pp. 87–94, 2012.
- [5] C. Anderson and Z. Sijercic, "Classification of EEG signals from four subjects during five mental tasks. Solving engineering problems with neural networks," in *Proceedings of the International Conference on Engineering Applications of Neural Networks (EANN'96)*, 1996.
- [6] A. Kostov and M. Polak, "Parallel man-machine training in development of EEG-based cursor control," *IEEE Transactions on Neural Systems and Rehabilitation Engineering*, vol. 8, no. 2, pp. 203–205, 2000.
- [7] E. Donchin, K. M. Spencer, and R. Wijesinghe, "The mental prosthesis: assessing the speed of a P300-based brain-computer interface," *IEEE Transactions on Neural Systems and Rehabilitation Engineering*, vol. 8, no. 2, pp. 174–179, 2000.
- [8] S. Sun and C. Zhang, "Adaptive feature extraction for EEG signal classification," *Medical & Biological Engineering & Computing*, vol. 44, pp. 931–935, 2006.
- [9] K. K. Ang, Z. Y. Chin, H. Zhang, and C. Guan, "Mutual information-based selection of optimal spatial-temporal patterns for single-trial EEG-based BCIs," *Pattern Recognition*, vol. 45, no. 6, pp. 2137–2144, 2012.
- [10] A. Tzovara, M. M. Murray, G. Plomp, M. H. Herzog, C. M. Michel, and M. De Lucia, "Decoding stimulus-related information from single-trial EEG responses based on voltage topographies," *Pattern Recognition*, vol. 45, no. 6, pp. 2109–2122, 2012.
- [11] M. D'Alessandro, R. Esteller, J. Echaz, G. Vachtsevanos, A. Hinson, and B. Litt, "Epileptic Seizure Prediction Using Hybrid Feature Selection Over Multiple Intracranial EEG Electrode Contacts: A Report of Four Patients," *IEEE Transactions on Biomedical Engineering*, vol. 50, no. 5, pp. 603–615, 2003.
- [12] S.-M. Zhou, J. Q. Gan, and F. Sepulveda, "Classifying mental tasks based on features of higher-order statistics from EEG signals in brain-computer interface," *Information Sciences*, vol. 178, no. 6, pp. 1629–1640, 2008.
- [13] S. Wang and C. J. James, "Extracting rhythmic brain activity for brain-computer interfacing through constrained independent component analysis," *Computational Intelligence and Neuroscience*, vol. 2007, Article ID 41468, 9 pages, 2007.
- [14] A. Barachant, S. Bonnet, M. Congedo, and C. Jutten, "BCI signal classification using a Riemannian-based kernel," in *Proceedings of the 20th European Symposium on Artificial Neural Networks, Computational Intelligence and Machine Learning, ESANN 2012*, pp. 97–102, April 2012.
- [15] D. J. McFarland, C. W. Anderson, K.-R. Müller, A. Schlögl, and D. J. Krusienski, "BCI Meeting 2005 - Workshop on BCI signal processing: Feature extraction and translation," *IEEE*

- Transactions on Neural Systems and Rehabilitation Engineering*, vol. 14, no. 2, pp. 135–138, 2006.
- [16] Y. Yang, S. Chevallier, J. Wiart, and I. Bloch, “Time-frequency optimization for discrimination between imagination of right and left hand movements based on two bipolar electroencephalography channels,” *EURASIP Journal on Advances in Signal Processing*, vol. 2014, no. 1, article no. 38, 2014.
- [17] F. Lotte, M. Congedo, A. Lécuyer, F. Lamarche, and B. Arnaldi, “A review of classification algorithms for EEG-based brain–computer interfaces,” *Journal of Neural Engineering*, vol. 4, no. 2, pp. R1–R13, 2007.
- [18] H. Ramoser, J. Müller-Gerking, and G. Pfurtscheller, “Optimal spatial filtering of single trial EEG during imagined hand movement,” *IEEE Transactions on Neural Systems and Rehabilitation Engineering*, vol. 8, no. 4, pp. 441–446, 2000.
- [19] Y. Yang, O. Kyrgyzov, J. Wiart, and I. Bloch, “Subject-specific channel selection for classification of motor imagery electroencephalographic data,” in *Proceedings of the 38th IEEE International Conference on Acoustics, Speech, and Signal Processing (ICASSP '13)*, pp. 1277–1280, May 2013.
- [20] M. Hu and H. Liang, “Intrinsic mode entropy based on multivariate empirical mode decomposition and its application to neural data analysis,” *Cognitive Neurodynamics*, vol. 5, no. 3, pp. 277–284, 2011.
- [21] F. Goksu, N. F. Ince, and A. H. Tewfik, “Sparse common spatial patterns in brain computer interface applications,” in *Proceedings of the 36th IEEE International Conference on Acoustics, Speech, and Signal Processing, ICASSP 2011*, pp. 533–536, May 2011.
- [22] A. Eliseyev, C. Moro, J. Faber et al., “L1-Penalized N-way PLS for subset of electrodes selection in BCI experiments,” *Journal of Neural Engineering*, vol. 9, no. 4, 2012.
- [23] Y. Yang, I. Bloch, S. Chevallier, and J. Wiart, “Subject-Specific Channel Selection Using Time Information for Motor Imagery Brain–Computer Interfaces,” *Cognitive Computation*, vol. 8, no. 3, pp. 505–518, 2016.
- [24] Y. Yang, S. Chevallier, J. Wiart, and I. Bloch, “Automatic selection of the number of spatial filters for motor-imagery BCI,” in *Proceedings of the 20th European Symposium on Artificial Neural Networks, Computational Intelligence and Machine Learning, ESANN 2012*, pp. 109–114, April 2012.
- [25] C. Guger, H. Ramoser, and G. Pfurtscheller, “Real-time EEG analysis with subject-specific spatial patterns for a brain-computer interface (BCI),” *IEEE Transactions on Neural Systems and Rehabilitation Engineering*, vol. 8, no. 4, pp. 447–456, 2000.
- [26] B. Blankertz, G. Dornhege, M. Krauledat, K.-R. Müller, and G. Curio, “The non-invasive Berlin brain-computer interface: fast acquisition of effective performance in untrained subjects,” *NeuroImage*, vol. 37, no. 2, pp. 539–550, 2007.
- [27] F. Nijboer, D. Plass-Oude Bos, Y. Blokland, R. van Wijk, and J. Farquhar, “Design requirements and potential target users for brain-computer interfaces – recommendations from rehabilitation professionals,” *Brain-Computer Interfaces*, vol. 1, no. 1, pp. 50–61, 2014.
- [28] G. R. Müller-Putz, V. Kaiser, T. Solis-Escalante, and G. Pfurtscheller, “Fast set-up asynchronous brain-switch based on detection of foot motor imagery in 1-channel EEG,” *Medical & Biological Engineering & Computing*, vol. 48, no. 3, pp. 229–233, 2010.
- [29] G. Pfurtscheller and T. Solis-Escalante, “Could the beta rebound in the EEG be suitable to realize a “brain switch”?” *Clinical Neurophysiology*, vol. 120, no. 1, pp. 24–29, 2009.
- [30] T. Solis-Escalante, G. Müller-Putz, C. Brunner, V. Kaiser, and G. Pfurtscheller, “Analysis of sensorimotor rhythms for the implementation of a brain switch for healthy subjects,” *Biomedical Signal Processing and Control*, vol. 5, no. 1, pp. 15–20, 2010.
- [31] A. X. Stewart, A. Nuthmann, and G. Sanguinetti, “Single-trial classification of EEG in a visual object task using ICA and machine learning,” *Journal of Neuroscience Methods*, vol. 228, pp. 1–14, 2014.
- [32] N. G. Ozmen and L. Gumusel, “Mental and motor task classification by LDA,” in *Proceedings of the 12th Mediterranean Conference on Medical and Biological Engineering and Computing, MEDICON 2010*, pp. 172–175, May 2010.
- [33] N. G. Ozmen and L. Gumusel, “Discrimination between mental and motor tasks of EEG signals using different classification methods,” in *Proceedings of the 2011 International Symposium on Innovations in Intelligent Systems and Applications (INISTA)*, pp. 143–147, Istanbul, Turkey, June 2011.
- [34] Y. Siuly and P. Wen, “Classification of EEG signals using sampling techniques and least square support vector machines,” in *Proceedings of the Fourth International Conference on Rough Sets and Knowledge Technology (RSKT, 2009)*, pp. 375–382, 2009.
- [35] P. Herman, G. Prasad, T. M. McGinnity, and D. Coyle, “Comparative analysis of spectral approaches to feature extraction for EEG-based motor imagery classification,” *IEEE Transactions on Neural Systems and Rehabilitation Engineering*, vol. 16, no. 4, pp. 317–326, 2008.
- [36] Z. A. Keirn and J. I. Aunon, “A new mode of communication between man and his surroundings,” *IEEE Transactions on Biomedical Engineering*, vol. 37, no. 12, pp. 1209–1214, 1990.
- [37] C. Mosquera, A. M. Trigueros, J. I. Franco, and Á. Navia-Vázquez, “New feature extraction approach for epileptic EEG signal detection using time–frequency distributions,” *Medical & Biological Engineering & Computing*, vol. 48, no. 4, pp. 321–330, 2010.
- [38] L. Fraiwan, K. Lweesy, N. Khasawneh, H. Wenz, and H. Dickhaus, “Automated sleep stage identification system based on time–frequency analysis of a single EEG channel and random forest classifier,” *Computer Methods & Programs in Biomedicine*, vol. 108, no. 1, pp. 10–19, 2012.
- [39] S. Deivanayagi, M. Manivannan, and P. Fernandez, “Spectral analysis of EEG signals during hypnosis,” *International Journal of Systemics, Cybernetics and Informatics*, pp. 75–80, 2007.
- [40] A. Subasi, E. Erçelebi, A. Alkan, and E. Koklukaya, “Comparison of subspace-based methods with AR parametric methods in epileptic seizure detection,” *Computers in Biology and Medicine*, vol. 36, no. 2, pp. 195–208, 2006.
- [41] M. Naji, M. Firoozabadi, and P. Azadfallah, “Classification of Music-Induced Emotions Based on Information Fusion of Forehead Biosignals and Electrocardiogram,” *Cognitive Computation*, vol. 6, no. 2, pp. 241–252, 2014.
- [42] L. Duan, H. Zhong, J. Miao, Z. Yang, W. Ma, and X. Zhang, “A Voting Optimized Strategy Based on ELM for Improving Classification of Motor Imagery BCI Data,” *Cognitive Computation*, vol. 6, no. 3, pp. 477–483, 2014.
- [43] K. Kirschfeld, “The physical basis of alpha waves in the electroencephalogram and the origin of the “berger effect”,” *Biological Cybernetics*, vol. 92, no. 3, pp. 177–185, 2005.
- [44] R. Grave De Peralta Menendez, Q. Noirhomme, F. Cincotti, D. Mattia, F. Aloise, and S. González Andino, “Modern electrophysiological methods for brain-computer interfaces,” *Computational Intelligence and Neuroscience*, vol. 2007, Article ID 56986, 8 pages, 2007.

- [45] A. Schlögl, F. Lee, H. Bischof, and G. Pfurtscheller, "Characterization of four-class motor imagery EEG data for the BCI-competition 2005," *Journal of Neural Engineering*, vol. 2, no. 4, pp. 14–22, 2005.
- [46] V. N. Vapnik, *The Nature of Statistical Learning Theory*, Springer, New York, NY, USA, 1995.
- [47] T. Fawcett, "An introduction to ROC analysis," *Pattern Recognition Letters*, vol. 27, no. 8, pp. 861–874, 2006.
- [48] C. Mühl, B. Allison, A. Nijholt, and G. Chanel, "A survey of affective brain computer interfaces: principles, state-of-the-art, and challenges," *Brain-Computer Interfaces*, vol. 1, no. 2, pp. 66–84, 2014.
- [49] M. Nakayama and H. Abe, "Feasibility of using single-channel EEG waveforms for single-trial classification of viewed characters," in *Proceedings of the 2010 International Conference on Information Society, i-Society 2010*, pp. 218–223, June 2010.



Hindawi

Submit your manuscripts at
www.hindawi.com

