

R



CT Axial: 33.26



Area: 4.06mm<sup>2</sup>  
Mean: 481.18  
Std.Dev.: 298.16

R



Area: 4.06mm<sup>2</sup>  
Mean: 304.75  
Std. Dev.: 199.95

CT Axial: 33.26

R



Area: 4.06mm<sup>2</sup>  
Mean: 293.74  
Std.Dev.: 160.52

R



Area: 4.06mm<sup>2</sup>  
Mean: 282.49  
Std.Dev.: 170.59

CT Axial: 32.87

R



Area: 4.06mm<sup>2</sup>  
Mean: 275.01  
Std.Dev.: 129.77



R



Area: 4.06mm<sup>2</sup>  
Mean: 271.44  
Std.Dev.: 107.22



CT Axial: 31.91

R



Area: 4.06mm<sup>2</sup>  
Mean: 263.45  
Std.Dev.: 117.16

CT Axial: 31.71



R



Area: 4.06mm<sup>2</sup>  
Mean: 265.76  
Std.Dev.: 136.32



CT Axial: 29.97

R



Area: 4.06mm<sup>2</sup>  
Mean: 257.95  
Std.Dev.: 111.24

CT Axial: 29.59

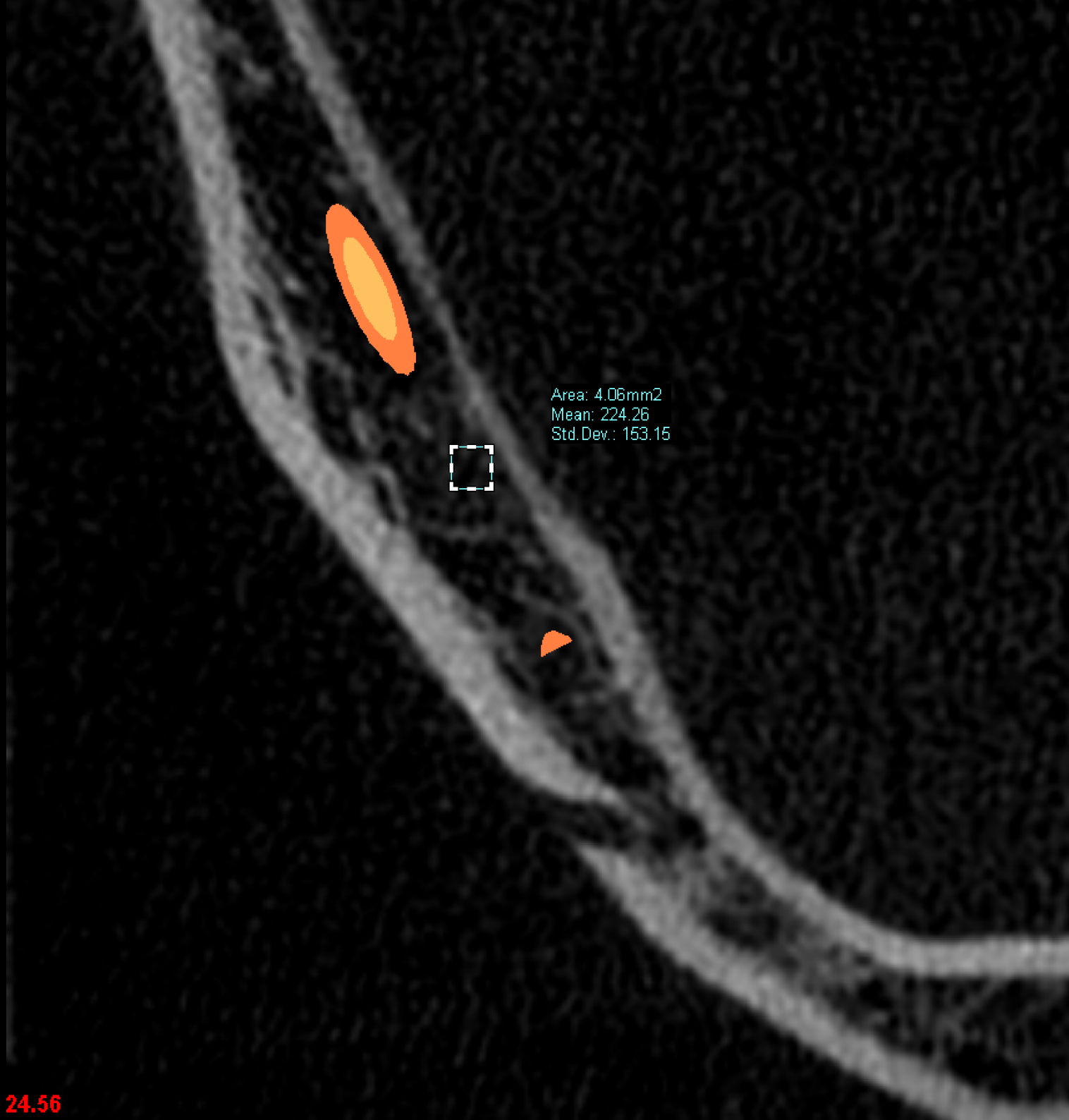
R

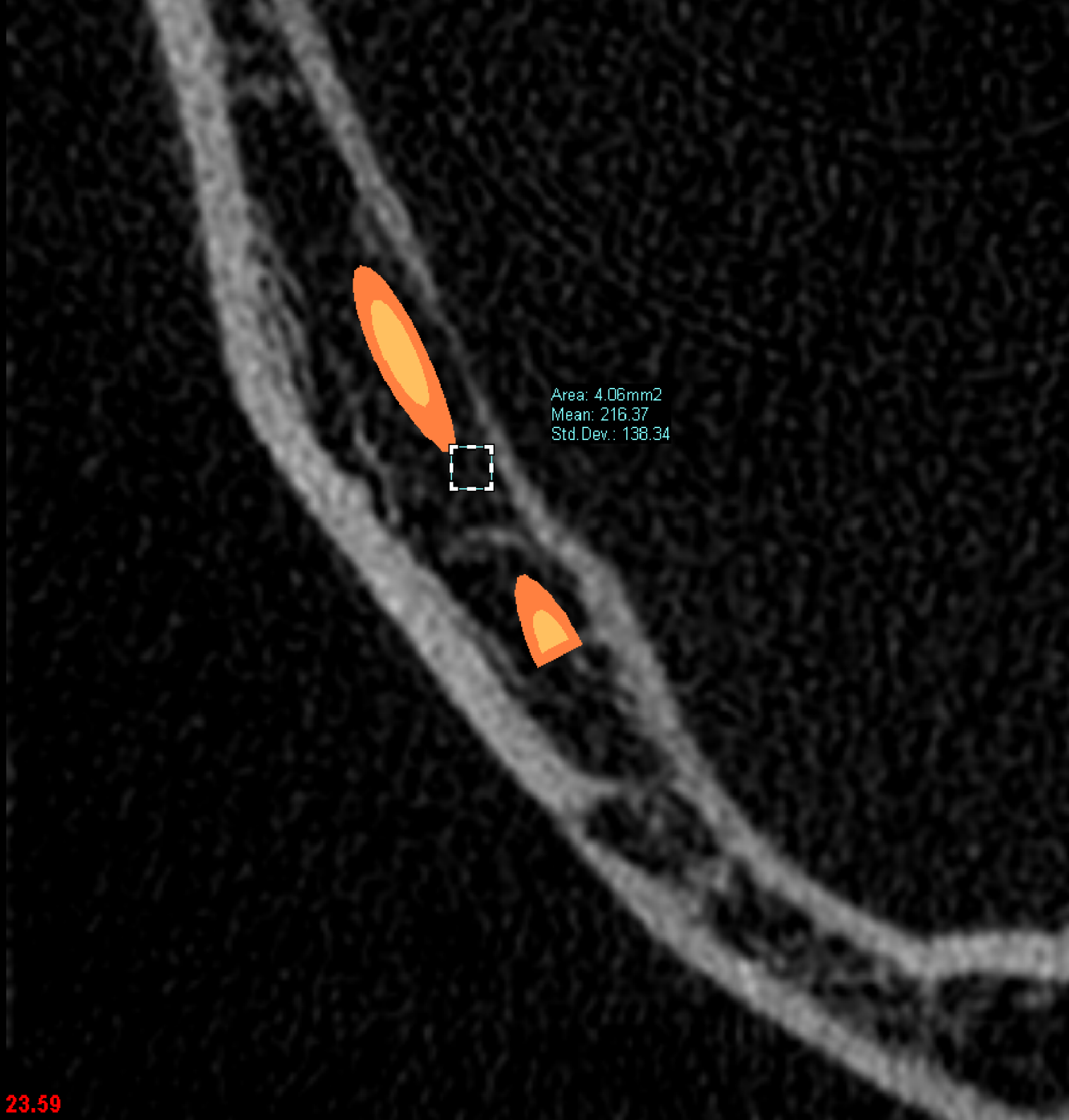


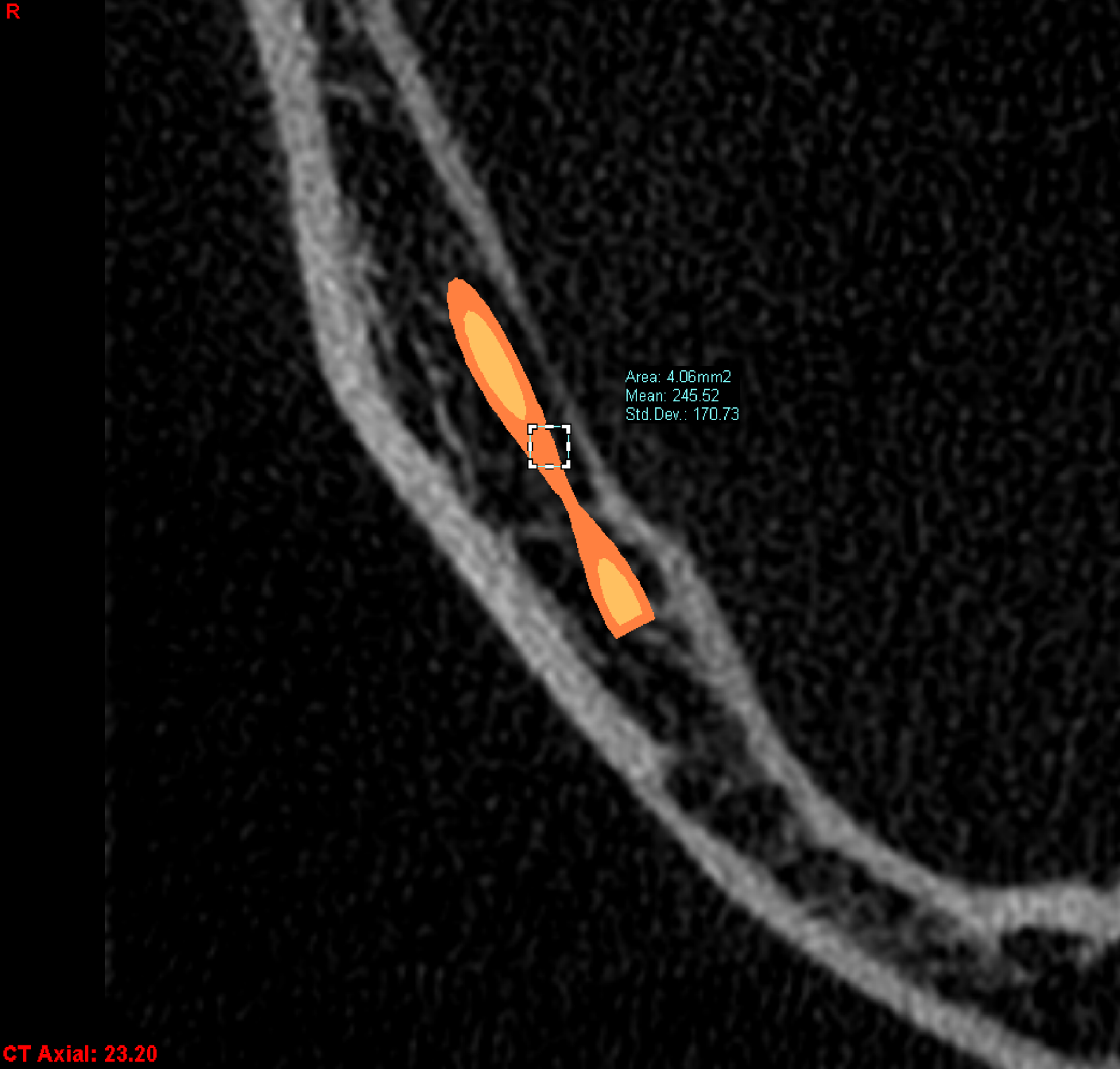
Area: 4.06mm2  
Mean: 230.25  
Std.Dev.: 125.95



CT Axial: 28.04







Area: 4.06mm<sup>2</sup>  
Mean: 245.52  
Std.Dev.: 170.73


The image shows an axial CT scan of a body part, likely a lung. A segmented lesion is visible, colored in shades of orange and yellow. A white dashed box highlights a specific region within the lesion. The background is dark, and the surrounding anatomical structures are shown in light gray.

R

Area: 4.06mm<sup>2</sup>  
Mean: 209.52  
Std.Dev.: 120.96



CT Axial: 22.62



Area: 4.06mm<sup>2</sup>  
Mean: 121.61  
Std.Dev.: 149.20

This is an axial CT scan of a vessel. A white box highlights a region of interest on the vessel wall. The statistical data for this region is as follows:

Parameter	Value
Area	4.06mm <sup>2</sup>
Mean	121.61
Std.Dev.	149.20



R

Area: 4.06mm<sup>2</sup>  
Mean: 76.84  
Std.Dev.: 181.44



R

Area: 4.06mm<sup>2</sup>  
Mean: 73.74  
Std.Dev.: 211.09

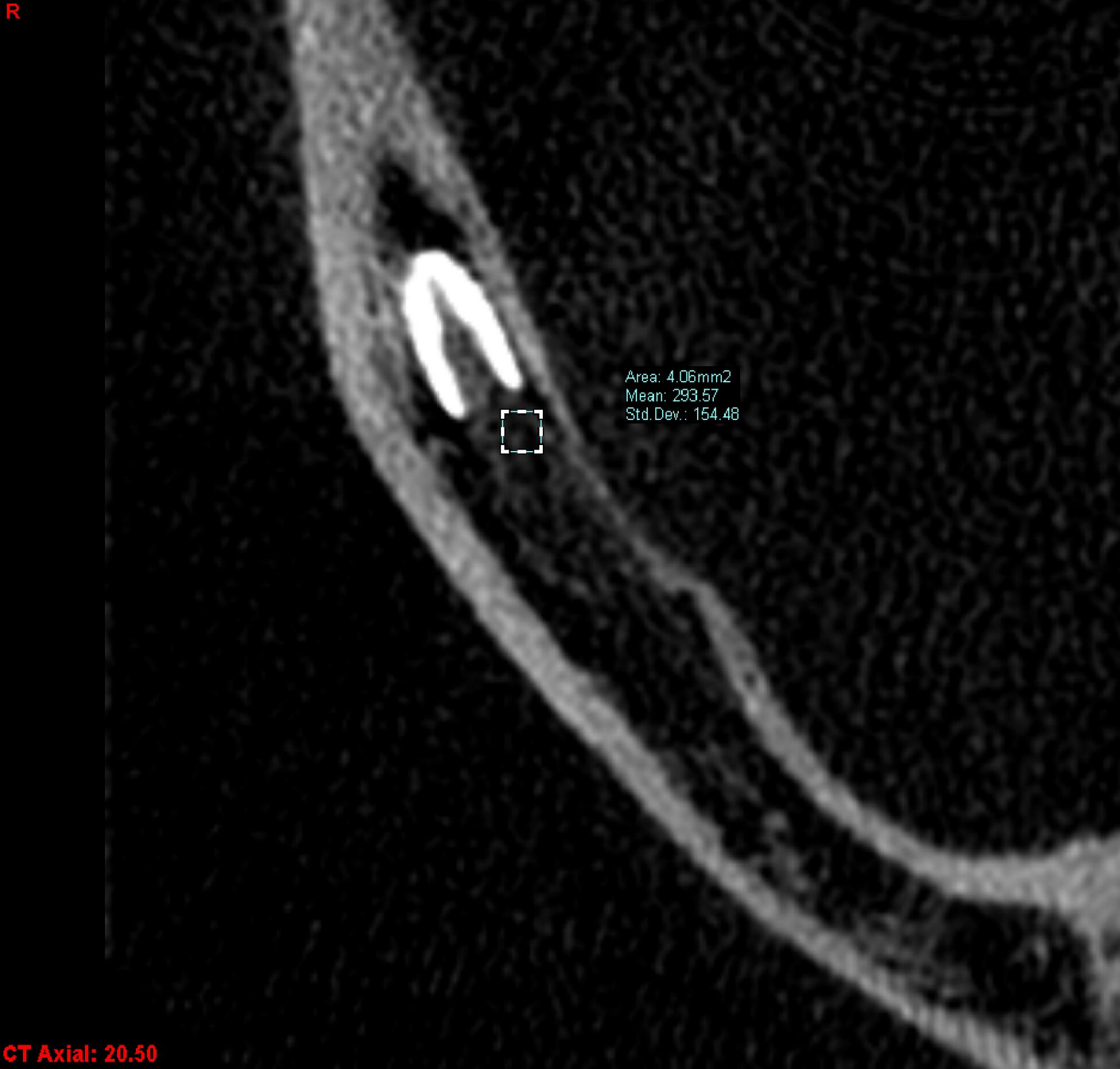


CT Axial: 21.66

R

Area: 4.06mm<sup>2</sup>  
Mean: 293.57  
Std.Dev.: 154.48

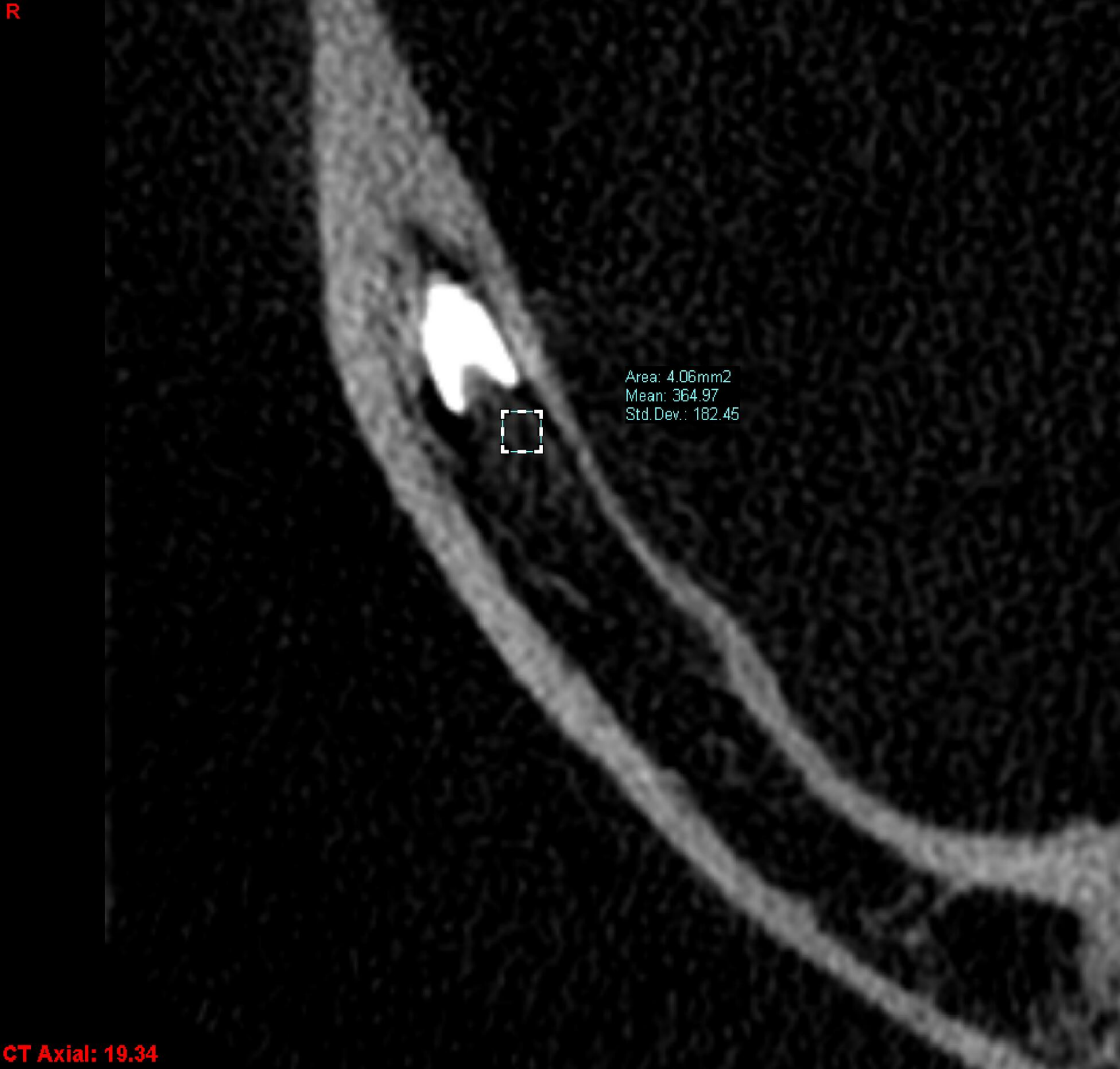
CT Axial: 20.50



R

Area: 4.06mm<sup>2</sup>  
Mean: 329.45  
Std.Dev.: 158.56





Area: 4.06mm<sup>2</sup>  
Mean: 364.97  
Std.Dev.: 182.45

R

Area: 4.06mm<sup>2</sup>  
Mean: 390.24  
Std.Dev.: 220.51



**Bone density of the examined area**

<b>Bone height (mm)</b>	<b>Area of examination (mm<sup>2</sup>)</b>	<b>Relative Bone Density (HU)</b>	<b>St. deviation</b>	<b>Notes:</b>
1	4.06	481.18	298.16	Top of the alveolar ridge
2	4.06	304.75	199.95	
3	4.06	293.74	160.52	
4	4.06	282.49	170.59	
5	4.06	275.01	129.77	
6	4.06	271.44	107.22	
7	4.06	263.45	117.16	
8	4.06	265.76	136.32	
9	4.06	257.95	111.24	
10	4.06	230.25	125.95	
11	4.06	224.26	153.15	
12	4.06	216.37	138.34	
13	4.06	245.52	170.73	Upper border of the mandibular canal
14	4.06	121.61	149.2	
15	4.06	73.74	211.09	
16	4.06	293.57	151.48	Lower border of the mandibular canal