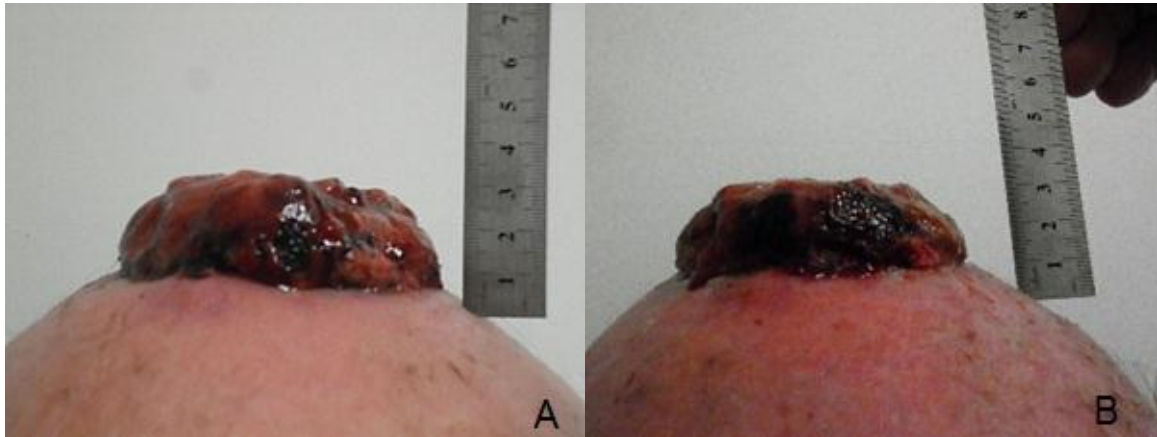


SUPPLEMENTARY MATERIAL



Supplementary Figure 1. Anterior view of the lesion during the second course of radiotherapy (40 Gy/20 fractions) in the patient of Case 1. Image A is taken at 34 Gy (that is, 14 Gy after the initial 20 Gy) and image B is taken at 40 Gy (that is, 20 Gy after the initial 20 Gy). Reduction in tumour size can be appreciated here.