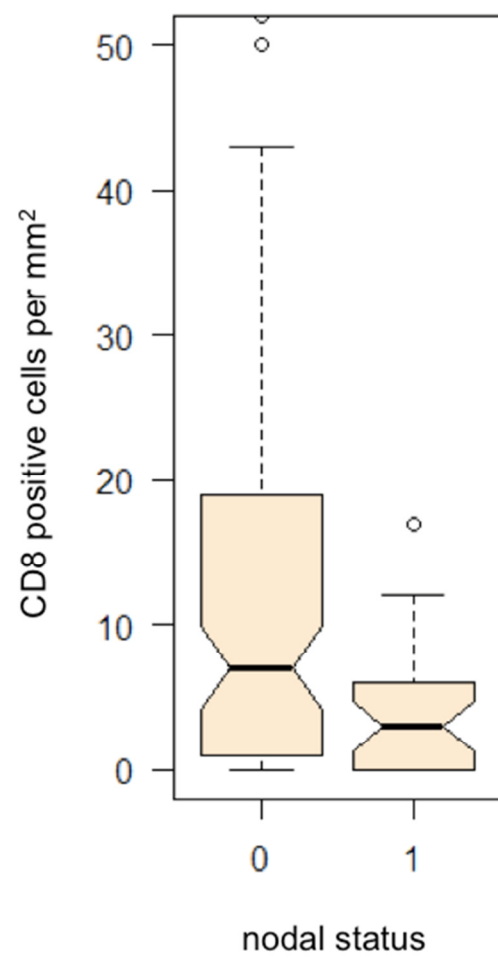
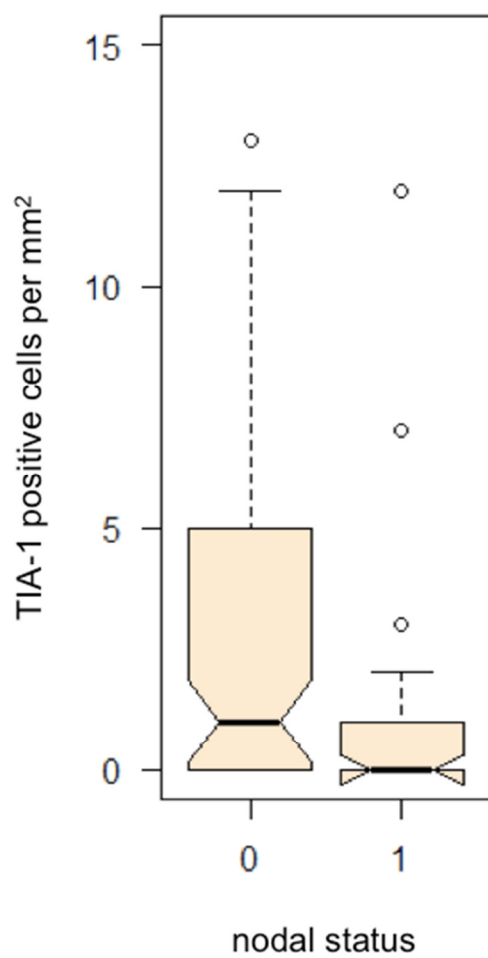
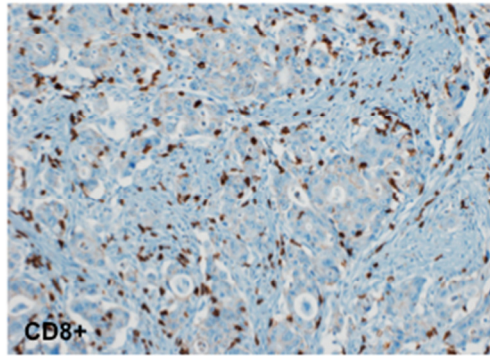
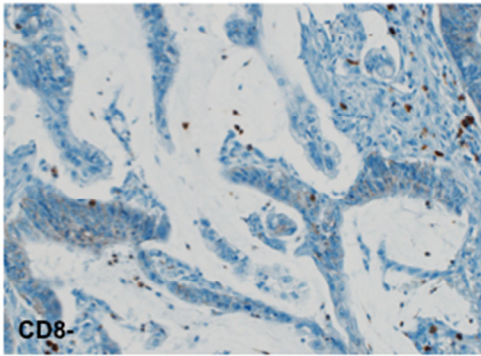


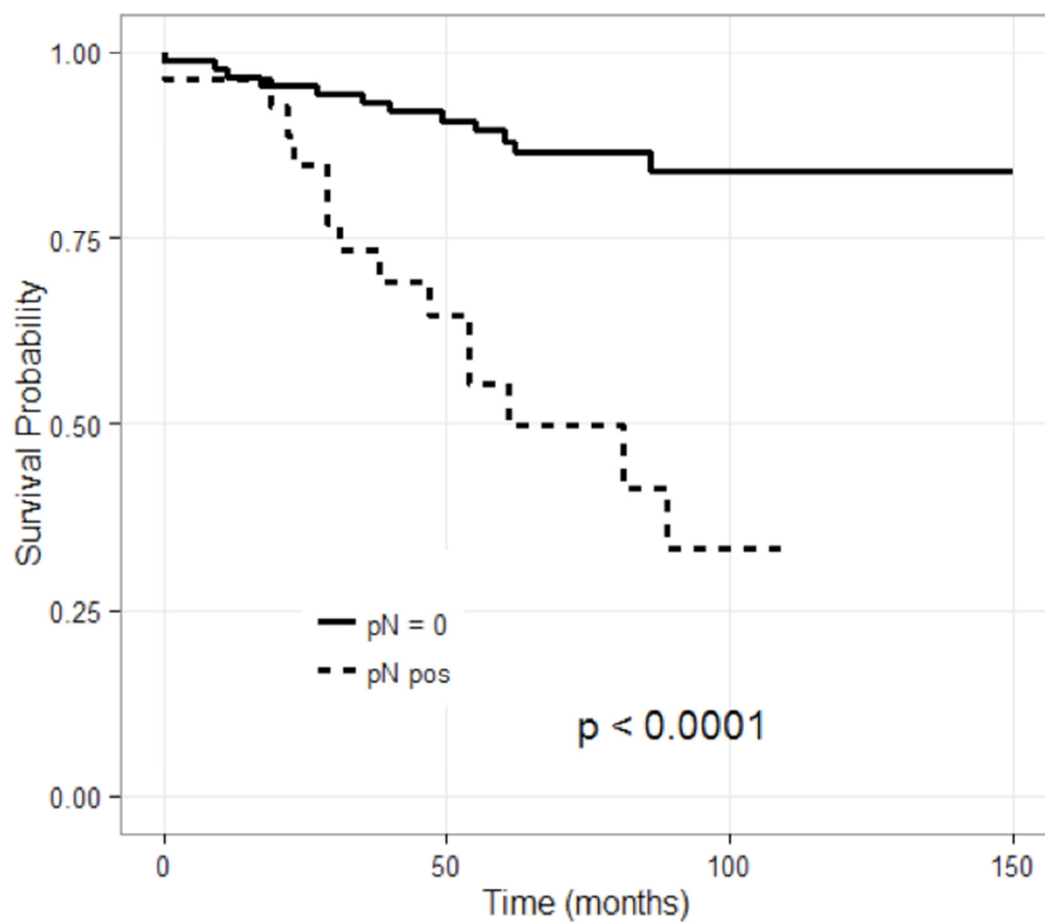
TIA = 0	94	58	16
TIA > 0	34	24	8

Numbers at risk



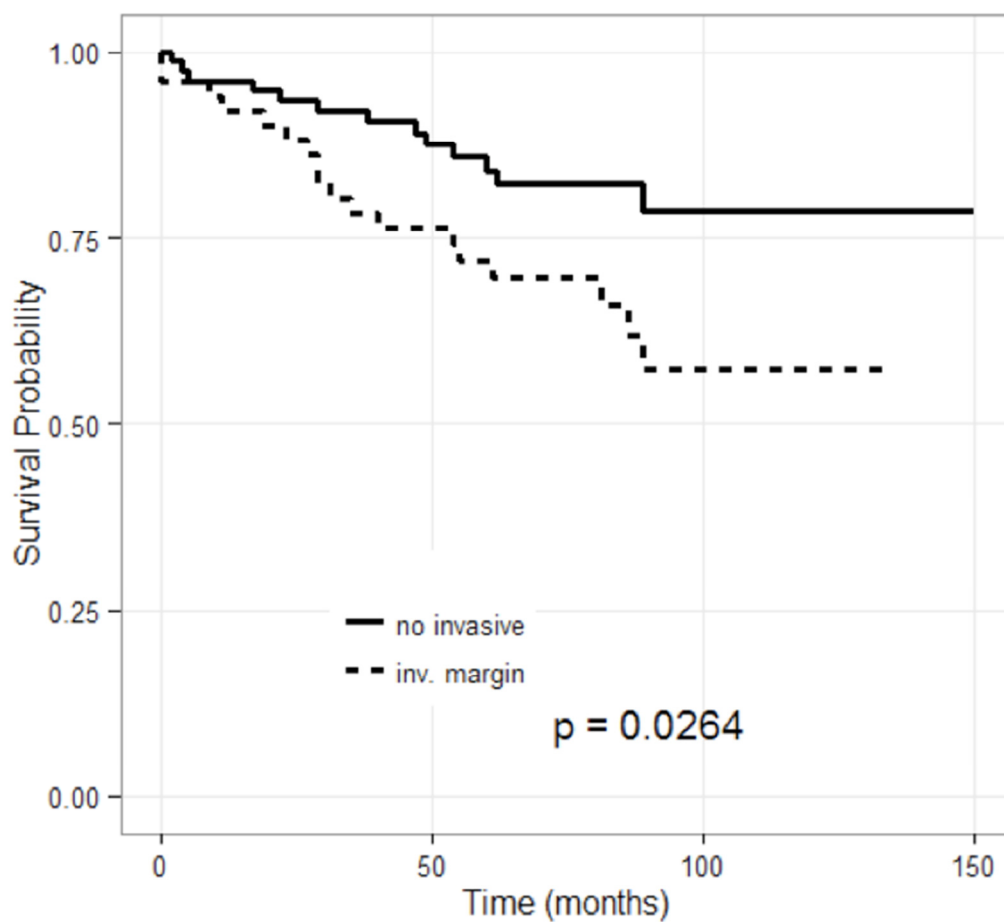


Examples of IHC-staining for CD8: CD8-, less than 10 CD8+ lymphocytes.
CD8+: more than 10 CD8+ lymphocytes.



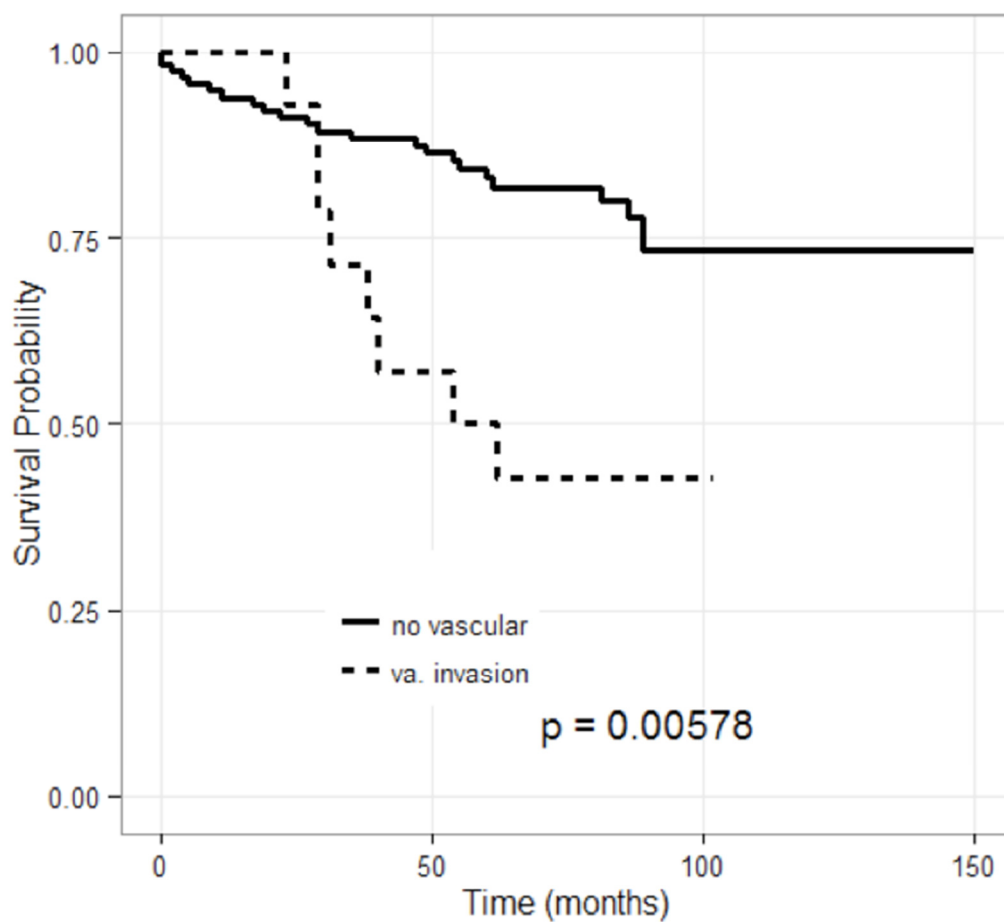
	0	50	100	150
pN = 0	95	69	20	1
pN pos	28	14	3	0

Numbers at risk



no invasive	84	55	16	1
inv. margin	52	34	10	0

Numbers at risk



no vascular	120	81	23	1
va. invasion	16	8	3	0
		Numbers at risk		