

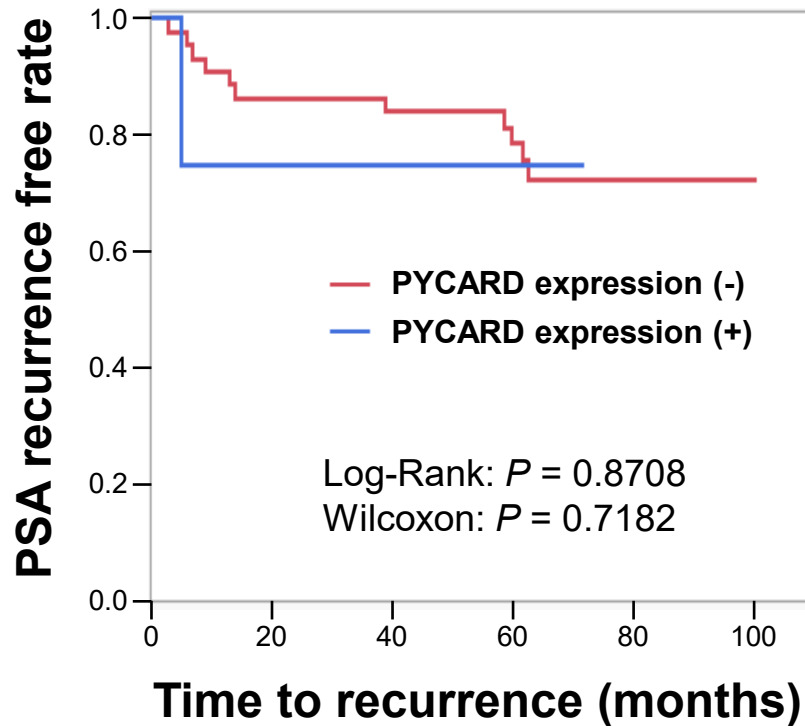
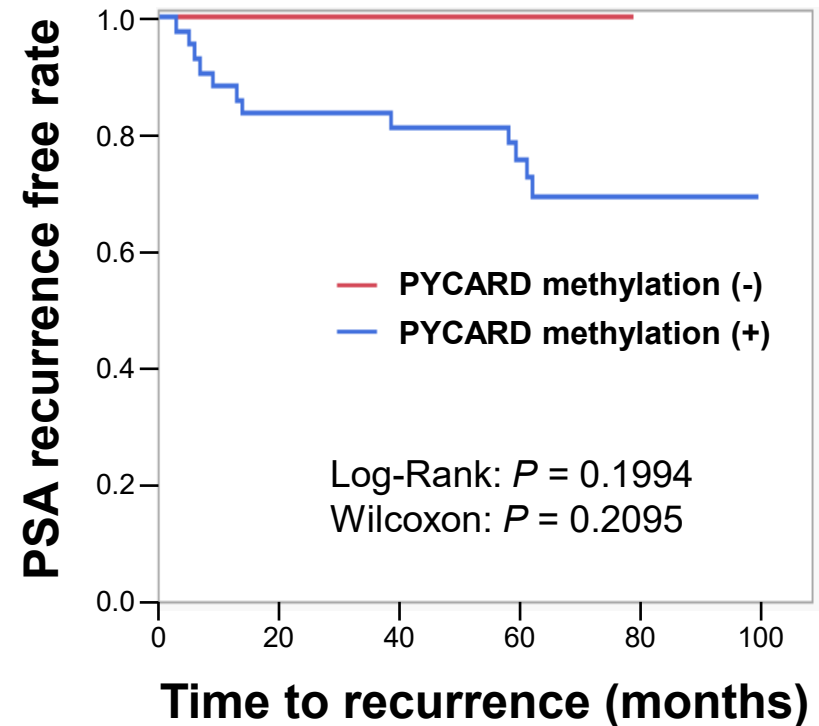
A**B**

Figure S3. The relationship between PSA recurrence free rate and *PYCARD* expression or *PYCARD* tumor-specific methylation.

Kaplan-Meier analysis using 49 prostate cancer patients did not show any relationships between PSA recurrence free rate and *PYCARD* expression (A) or *PYCARD* tumor-specific methylation (B). Postoperative PSA levels in case #37 did not drop to undetectable levels (0.2 ng/ml). Therefore, we excluded this case from Kaplan-Meier analysis.