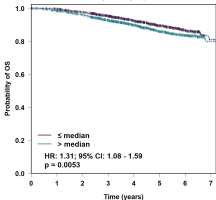


A

Kaplan-Meier survival estimates of HMGA1 expression

Node all; ER all; PR all

(all RNA-seq data)



Patients at risk:

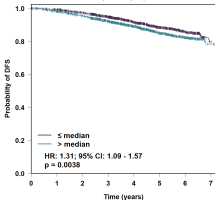
	0	1	2	3	4	5	6	7	(Events)
— \leq median	2 009	1 869	1 823	1 838	1 163	697	301	63	(188)
— > median	2 007	1 921	1 799	1 518	1 124	687	325	55	(243)

B

Kaplan-Meier survival estimates of HMGA1 expression

Node all; ER all; PR all

(all RNA-seq data)



Patients at risk:

	0	1	2	3	4	5	6	7	(Events)
— \leq median	2 009	1 862	1 818	1 831	1 064	688	294	57	(204)
— > median	2 007	1 914	1 783	1 515	1 118	680	318	49	(263)