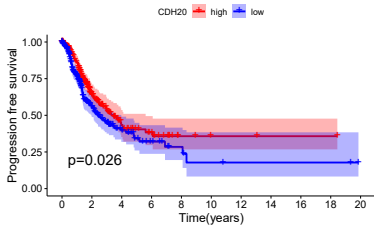


CDH19

high	444	142	51	25	9	4	3	2	2	2	0
low	62	17	4	3	1	1	1	1	1	1	0
	0	2	4	6	8	10	12	14	16	18	20

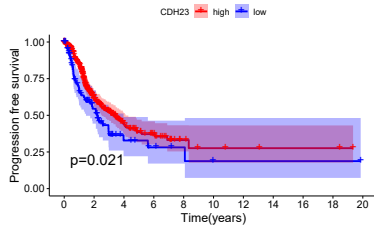
Time(years)



CDH20

high	261	83	29	16	4	2	2	1	1	1	0
low	245	76	26	12	6	3	2	2	2	2	0
	0	2	4	6	8	10	12	14	16	18	20

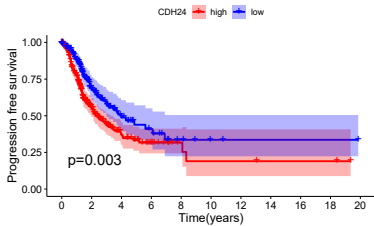
Time(years)



CDH23

high	412	127	46	23	7	4	3	2	2	2	0
low	94	32	9	5	3	1	1	1	1	1	0
	0	2	4	6	8	10	12	14	16	18	20

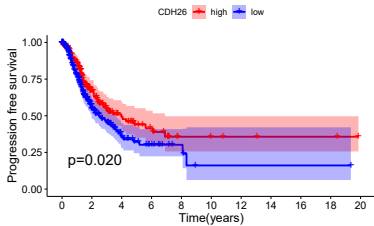
Time(years)



CDH24

high	315	89	30	15	5	3	3	2	2	2	0
low	191	70	25	13	5	2	1	1	1	1	0
	0	2	4	6	8	10	12	14	16	18	20

Time(years)



CDH26

high	215	82	30	16	5	4	3	2	2	2	0
low	291	77	25	12	5	1	1	1	1	1	0
	0	2	4	6	8	10	12	14	16	18	20

Time(years)