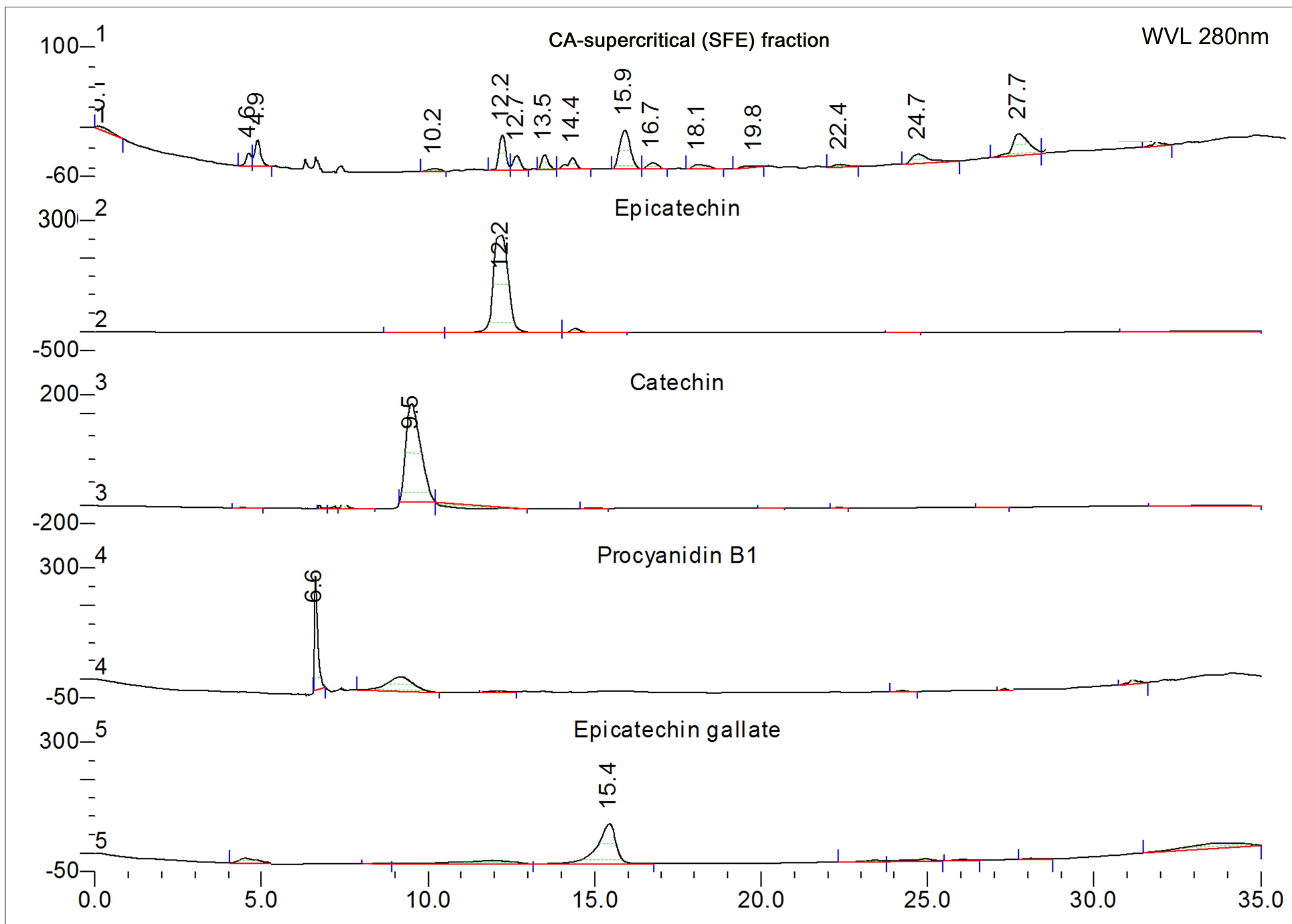


Supplementary Figure 2. Standardization of supercritical fractions of *Cassia auriculata* seeds for epicatechin gallate and epicatechin



Mobile phase A – water: methanol: formic acid (79.5:20:0.5) and B- acetonitrile: formic acid (99.7:0.3) at a flow rate of 0.4 mL.
Gradient was as follows: 0 to 15 min – B (5%); 15 to 20 min – B (5 to 20%); 20 to 25 min – B (20 to 30%); 25 to 30 min – B (30 to 50%);
30 to 35 min – re-equilibration B (50 to 5%)

Relative retention at 280nm and the spectra match demonstrates presence of epicatechin gallate (20%) and catechin (6%)
in supercritical fraction of *Cassia auriculata* seeds