

1 **NMR-based metabonomic studies on stomach heat and cold**  
2 **syndromes and intervention effects of the corresponding**  
3 **formulas**

4 Zhongjie Zou, Bin Han, Mengjuan Gong, Shumei Wang, and Shengwang Liang

5

6

7 School of Traditional Chinese Medicine, Guangdong Pharmaceutical University,

8 Guangzhou 510006, China.

9

10 Correspondence should be addressed to Zhongjie Zou; zouzhongjie@139.com

11

12

13

14

15

16

17

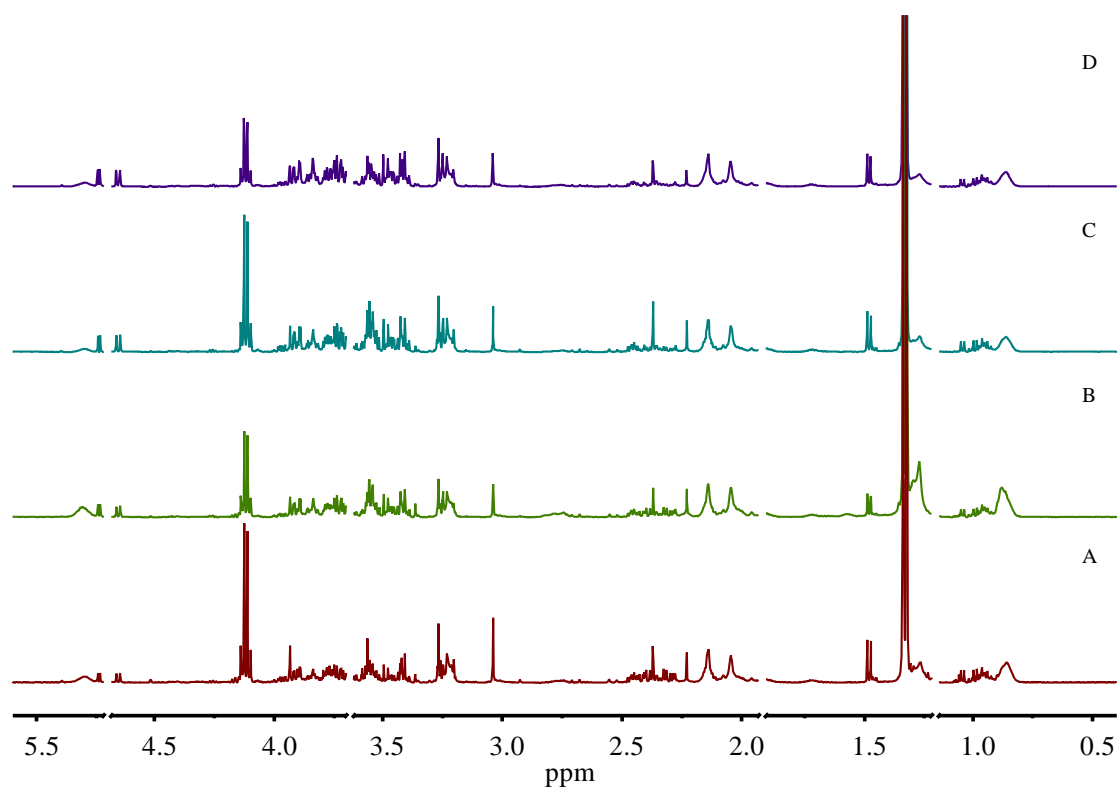
18

19

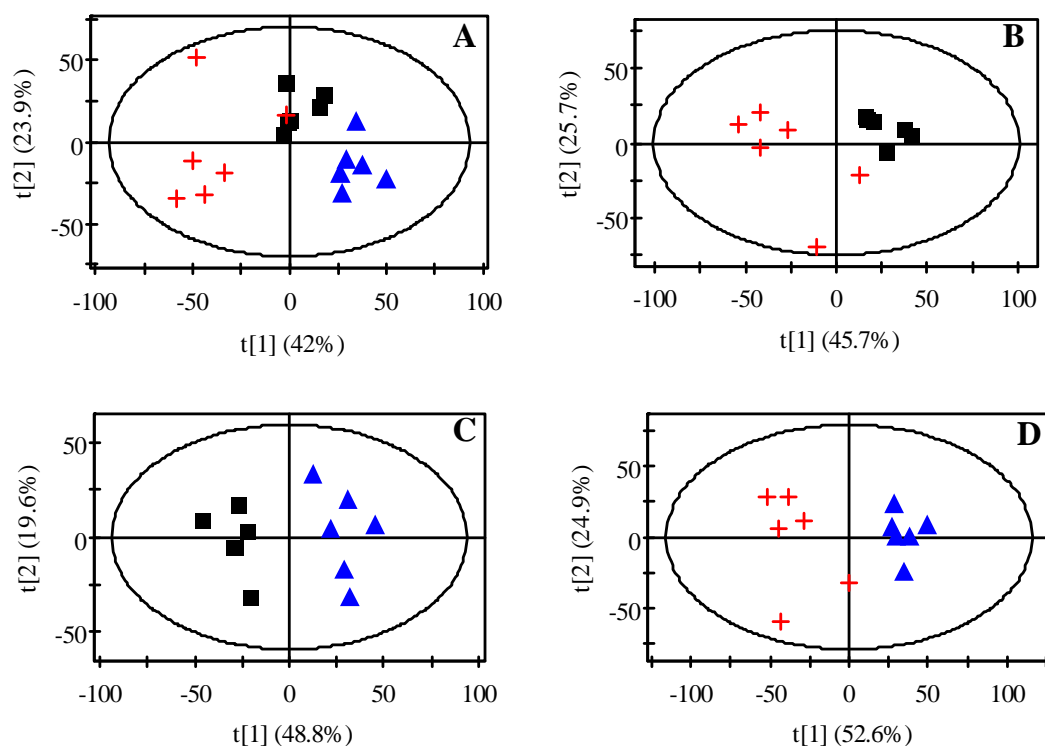
20

21

22



**Figure 1S Representative  $^1\text{H}$  NMR spectra of rat serum.** (A) SH+ZJW treatment group, (B) SH+LZW treatment group, (C) SC+ZJW treatment group, (D) SC+LZW treatment group.



28

29 **Figure 2S PCA scores plots derived from  $^1\text{H}$  NMR spectra of rat serum samples.**

30 (■) Control group, (+) SH model group, (▲) SC model group. No outlier was

31 observed. The four scores plots showed obvious separation between SH model group

32 and control group, SC model group and control group, as well as SH and SC model

33 groups.