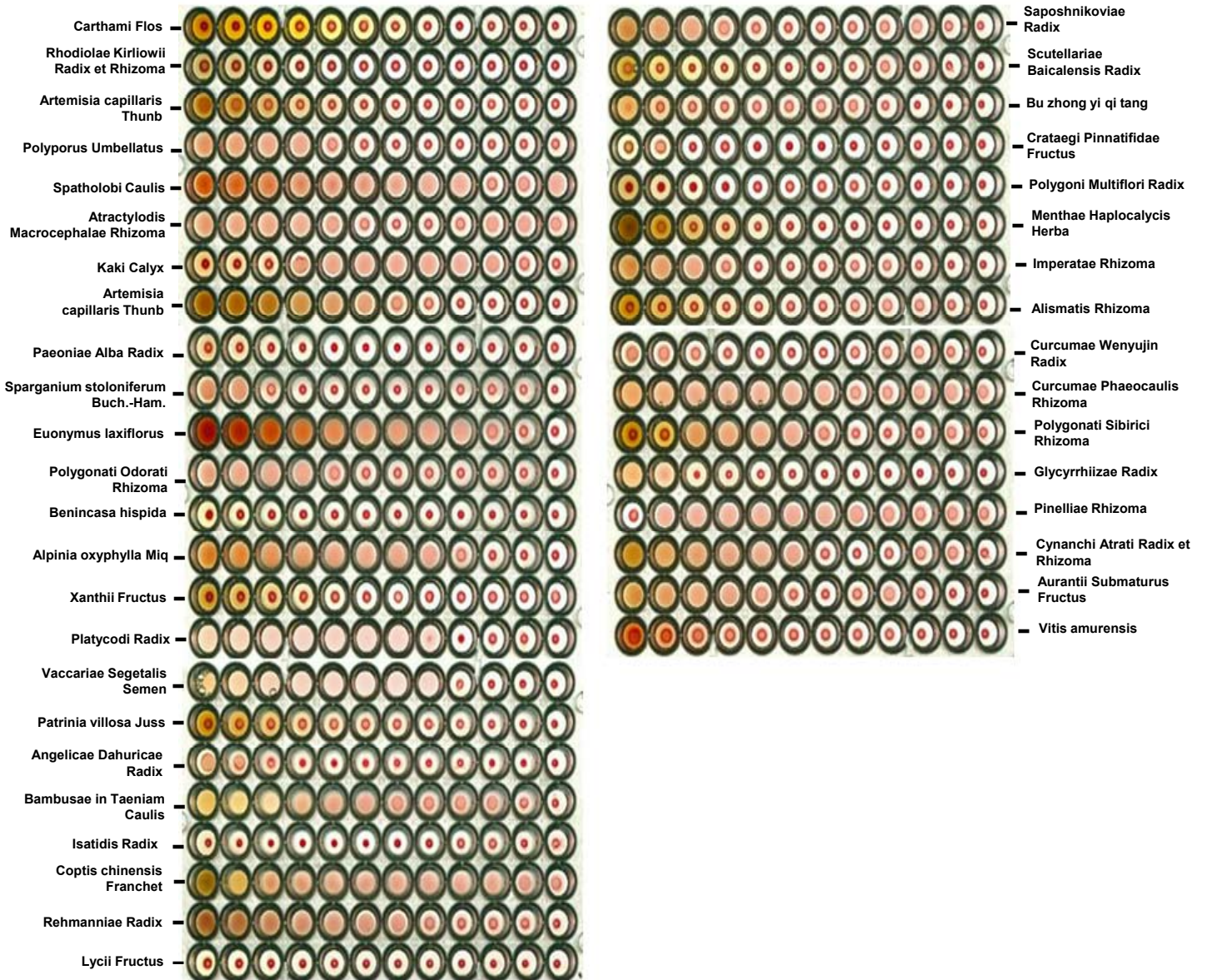
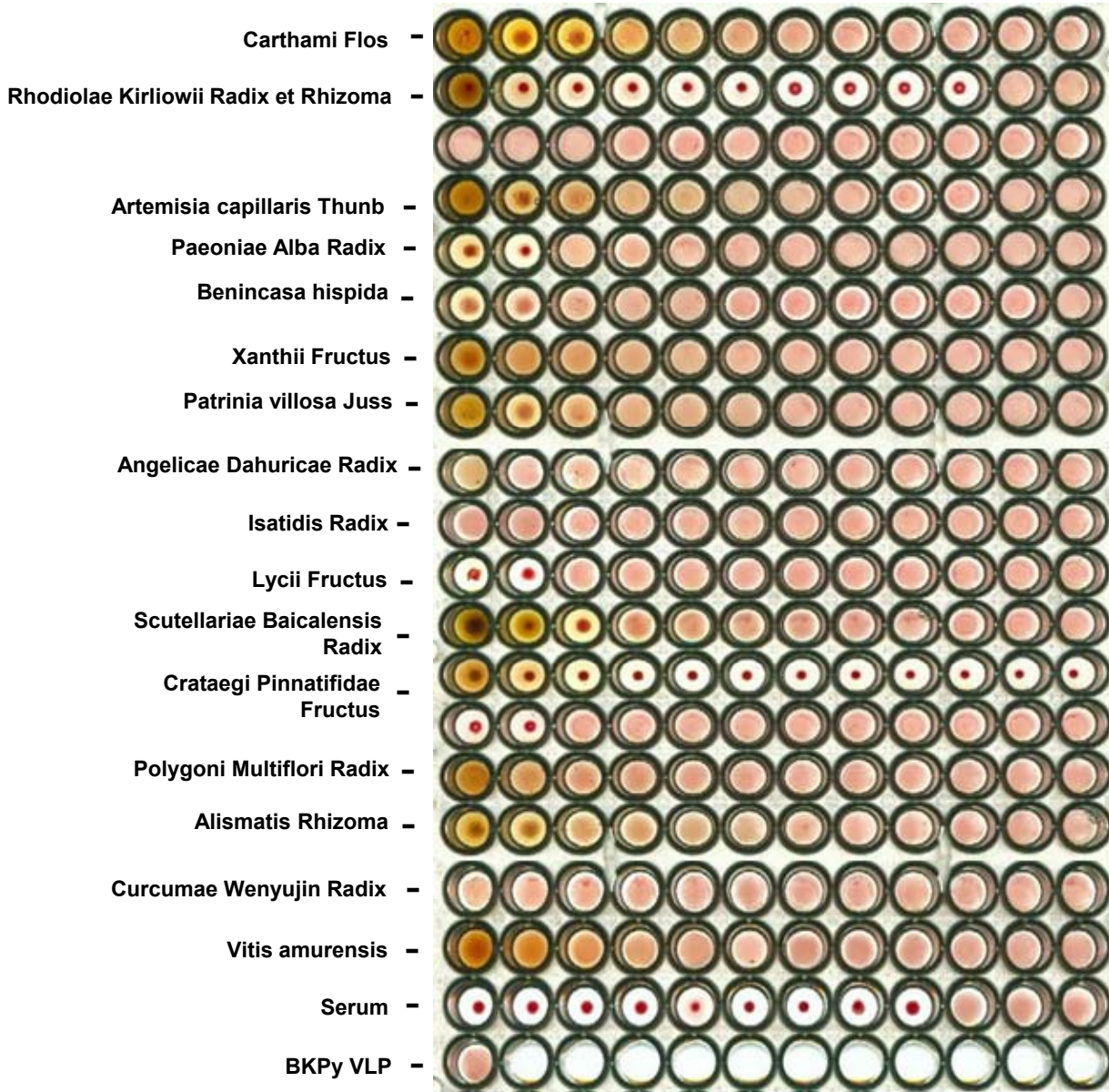


Sup. Fig 1

**A**

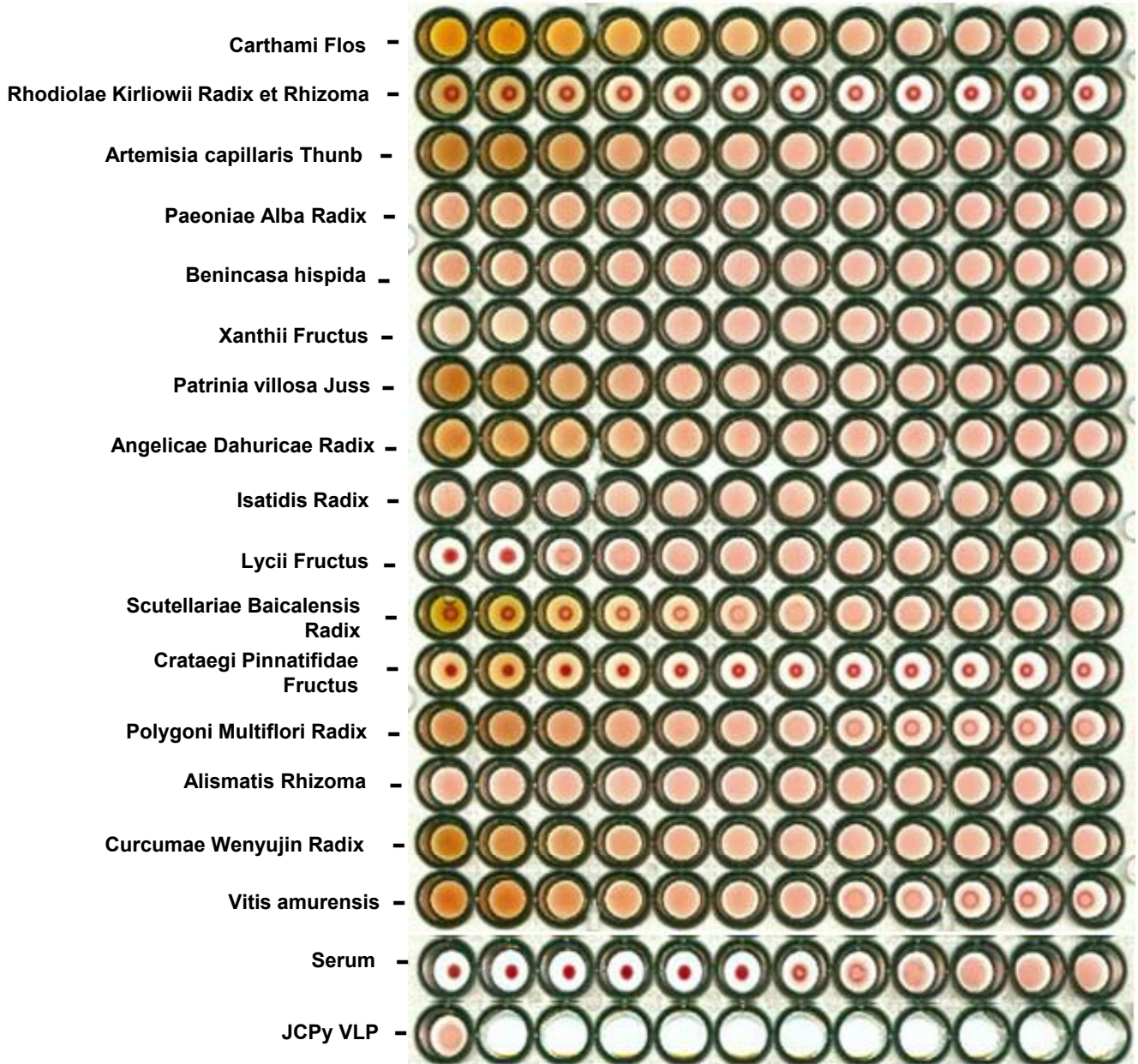


**B**





**C**



**Supplementary Fig. S1. Screening of herbal extracts for hemagglutination inhibition activity on BKPyV and JCPyV VLPs.** (A) For the hemagglutination assay of herbal extracts, the extracts (100 mg/mL) were diluted in twofold steps with PBS in a U-shaped microtiter plate, 50  $\mu$ L of 0.7% (v/v) erythrocyte suspension was added to each well, and hemagglutination activity was determined after 1 h incubation. (B and C) For analysis of herbal extracts' hemagglutination inhibition activity on BKPyV VLPs and JCPyV VLPs, the extracts (100 mg/mL) were diluted in twofold steps with PBS in a U-shaped microtiter plate, and 2 HAU of BKPyV VLPs (B) or 8 HAU of JCPyV VLPs (C) in 25  $\mu$ L were added to each well, followed by 50  $\mu$ L of 7% (v/v) erythrocyte suspension. After 1 h incubation, the hemagglutination inhibition activity of the extracts was determined.