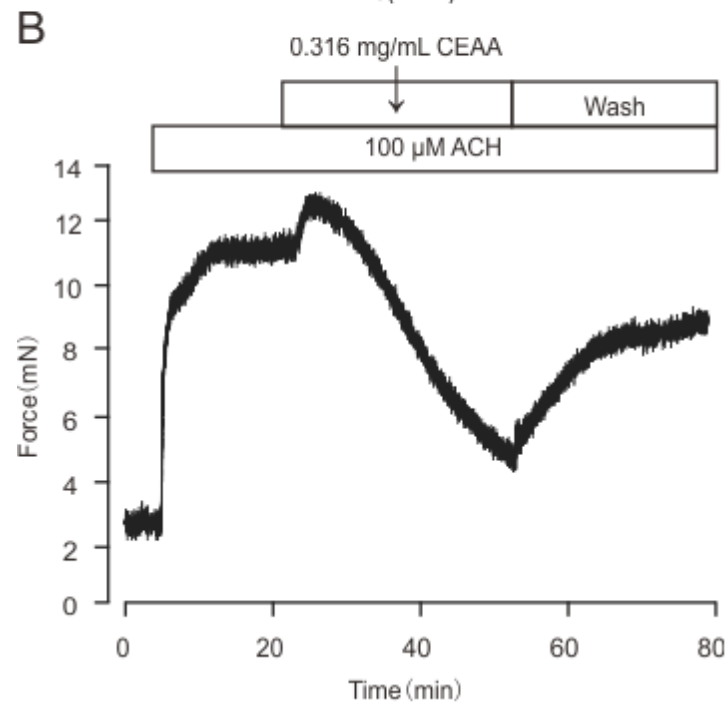
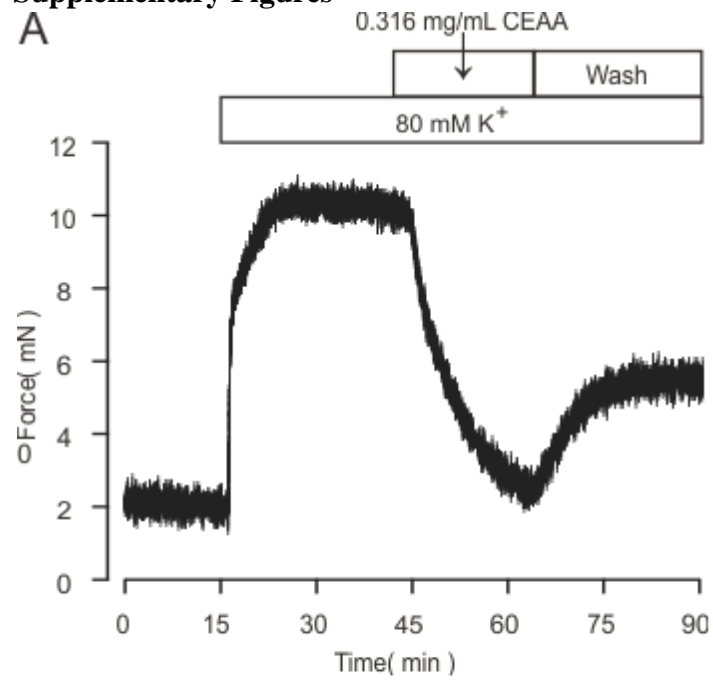
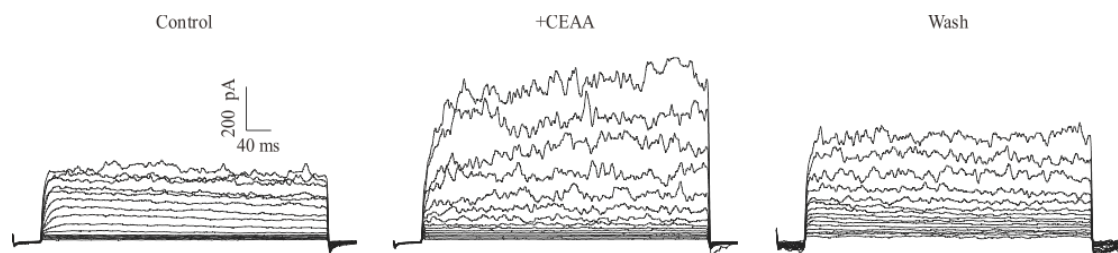


Supplementary Figures



**Fig. S1.** The relaxant effects of CEAA on ACh/high K<sup>+</sup>-induced contractions were partially reversible. A. After washing out of CEAA, high K<sup>+</sup>-induced contraction recovered by 35.9% ±3.5%. B. After washing out of CEAA, ACh-induced contraction recovered by 45.8% ±1.2%.



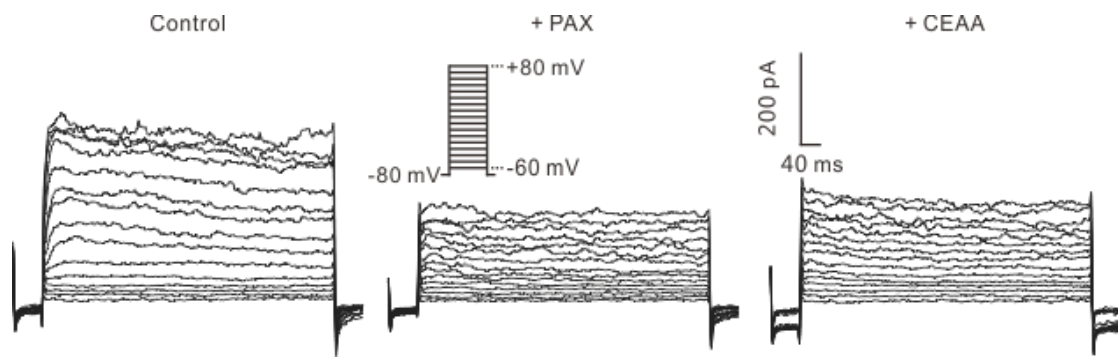
**Fig. S2.** The enhanced BK currents by application of CEAA partially recovered with washout. A Example of whole-cell BK current traces in the absence (left) or presence (middle) of CEAA (0.316 mg/ml) and washing out of CEAA (right).

.

.

.

.



**Fig. S3.** Stimulatory effects of CEAA on whole-cell BK outward currents in ASMCs under paxilline-preincubated conditions. A example of whole-cell BK current traces in the absence (left) or presence (middle) of paxilline and the application of CEAA (0.316 mg/ml) (right).