

Supplementary Materials

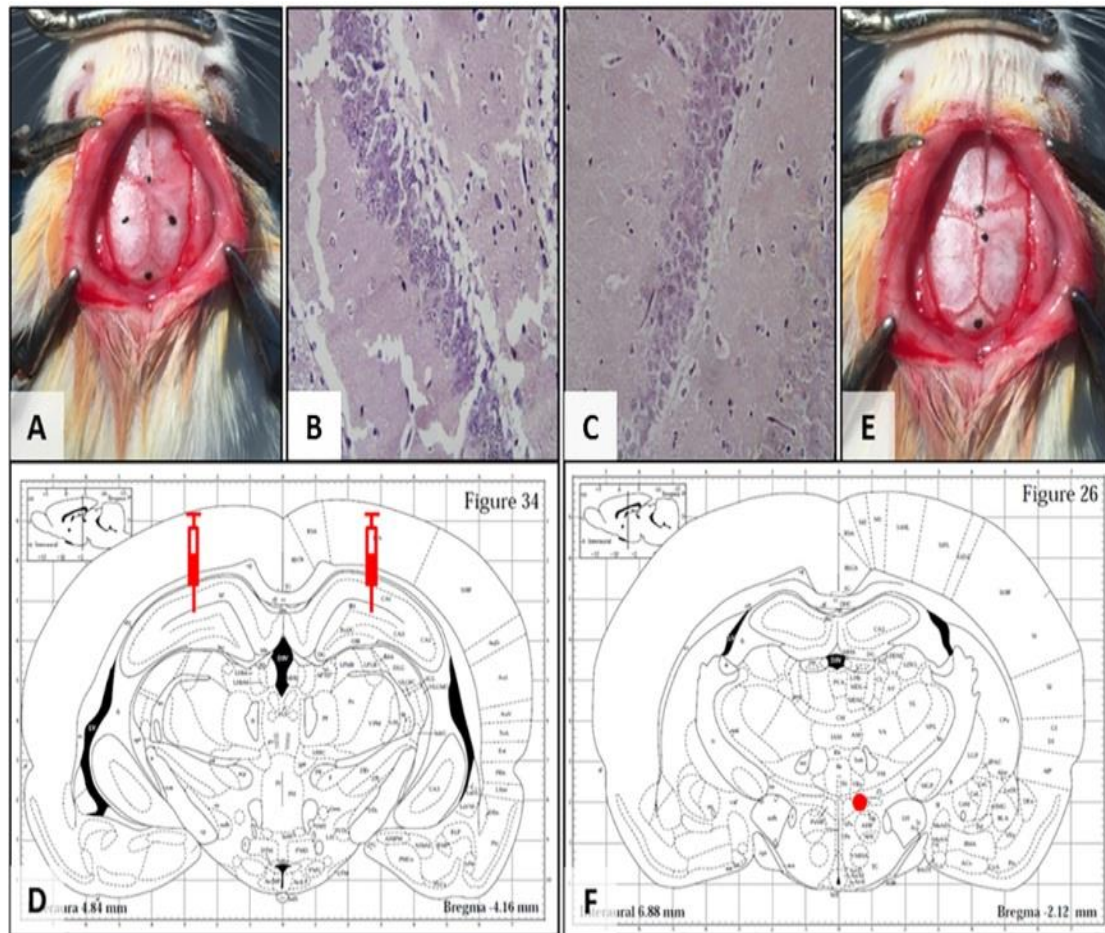


Figure S1. “A”, “B”, “C” and “D” are lesion bilateral hippocampal CA1 area; “E” and “F” are the coordinates of PVN

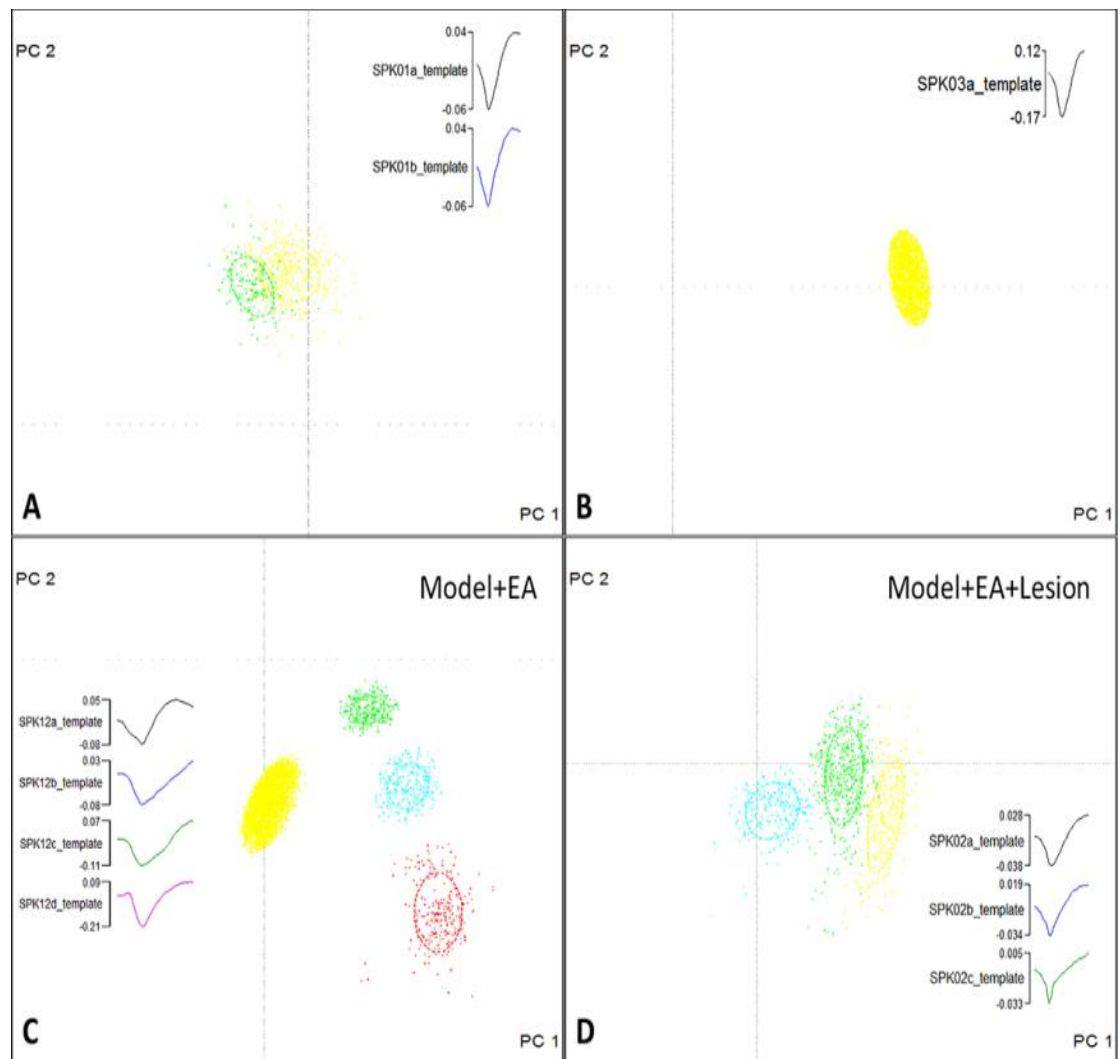


Figure S2. Cluster analysis of the discharge frequency of the PVN neurons. “A”, “B”, “C” and “D” showed that there were 2 PVN neurons with discharge in the Sham group, 1 in the Model group, 4 in the Model + EA group, and 3 in the Model + EA + Lesion group.

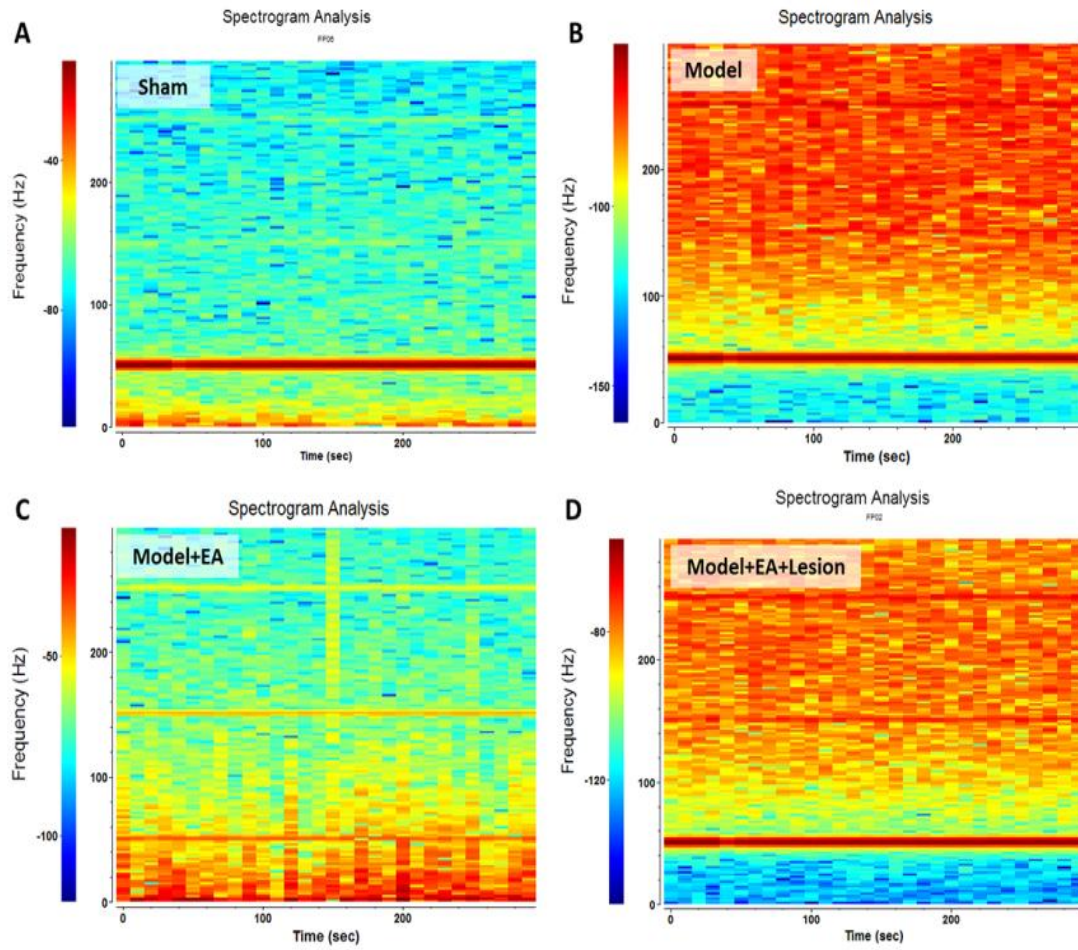


Figure S3. Real-time spectrum analysis the PVN's LFP discharge. According to the intensity of the spectral energy of the local field potential (LFP), the 4 groups were sequenced as follows: "B" the Model group > "D" the Model + EA + Lesion group > "C" the Model + EA group > "A" the Sham group.