

Supplementary Materials

Metabolic response in rats following electro-acupuncture or moxibustion stimulation

Jingjing Xu^a, Xianwei Lin^a, Kian-Kai Cheng^b, Huan Zhong^c, Mi Liu^c, Guoshan
Zhang^c, Guiping Shen^a, Jiyang Dong^{a,*}

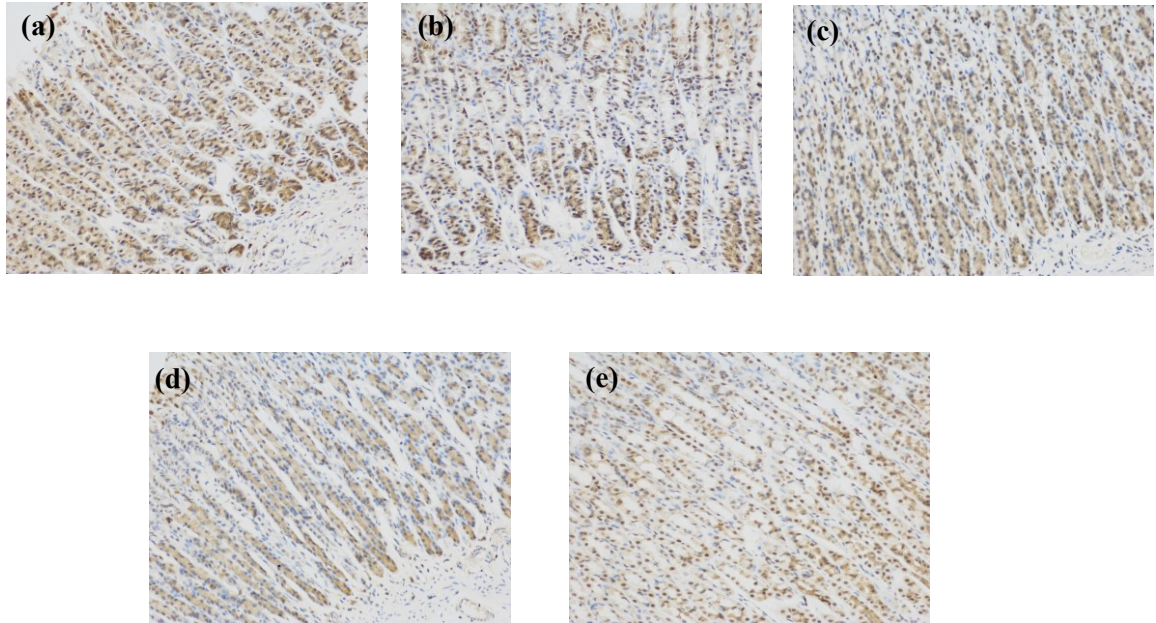
^a Department of Electronic Science, Fujian Provincial Key Laboratory for Plasma and Magnetic
Resonance, Xiamen University, Xiamen 361005, China;

^b Innovation Centre in Agritechology, Universiti Teknologi Malaysia, 84600 Muar, Johor, Malaysia

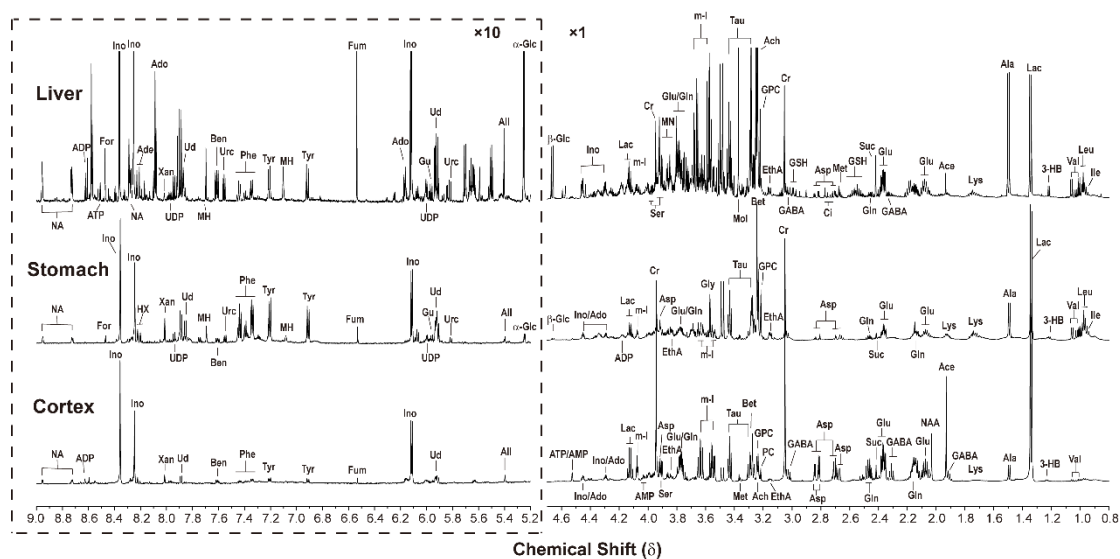
^c College of Acupuncture and Moxibustion, Hunan University of Chinese Medicine, Changsha 410007,
China;

* Correspondence to: Prof. Jiyang Dong, Department of Electronic Science, Xiamen University, 422 Siming Nan
Road, Xiamen 361005, China. Email: jydong@xmu.edu.cn, Fax: (+86) 592-2183301

Supplemental Figure S1. Photomicrographs of representative sections of gastric mucosa from five studied groups. (a) the control group, (b) electro-acupuncture stimulation on SM acupoints, (c) moxibustion stimulation on SM acupoints, (d) electro-acupuncture stimulation on GM acupoints, (e) moxibustion stimulation on GM acupoints.

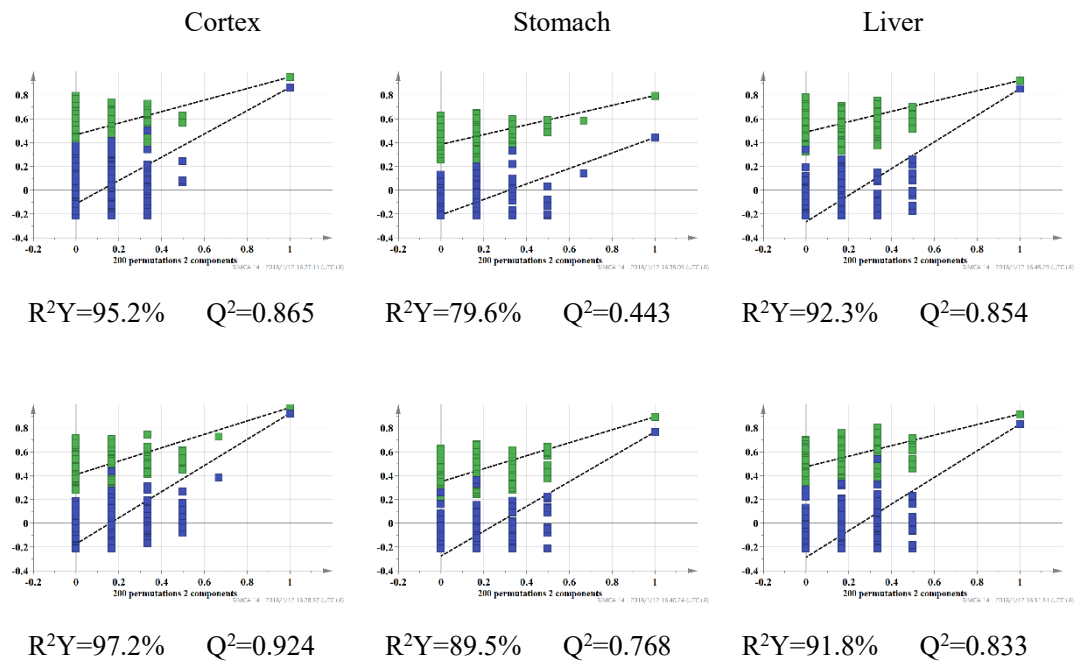


Supplemental Figure S2. Typical ^1H NMR spectra of cortex, stomach and liver extracts from the control rats.



Abbreviations: Ace, acetate; Ach, acetylcholine; Ade, adenosine; Ado, Adenosine; ADP, Adenosine 3',5'-diphosphate; Ala, alanine; All, allantoin; AMP, adenosine monophosphate; Asn, asparagine; Asp, aspartate; ATP, adenosine triphosphate; Bet, betaine; Ben, benzoate; Ci, citrate; Cr, creatine; DMA, dimethylamine; DMG, N,N-dimethylglycine; EthA, ethanolamine; For, formate; Fum, fumarate; GABA, gamma-aminobutyrate; Gln, glutamine; Glu, glutamate; Gly, glycine; GPC, glycerophosphocholine; GSH, glutathione; Gu, guanosine; 3-HB, 3-hydroxybutyrate; His, histidine; HPA, hydroxyphenylacetate; HX, hypoxanthine; Ile, isoleucine; m-I, myo-inositol; Ino, inosine; α -KG, alpha-ketoglutarate; Lac, lactate; Leu, leucine; Lys, lysine; MH, 1-methylhistidine; Mol, methanol; NA, nicotinamide; NAA, N-acetylaspartate; NAG, N-acetylglutamate; OA, oxaloacetate; PC, phosphocholine; Phe, phenylalanine; Ser, Serine; Suc, succinate; Tau, taurine; Tyr, tyrosine; Urc, urocanate; Ud, uridine; Val, valine; Xan, xanthine.

Supplemental Figure S3. Permutation test for pair-wise PLS-DA models comparing the controls with animals treated with the electro-acupuncture (top row) or moxibustion (bottom row) stimulation on the SM acupoints.



Supplemental Figure S4. Permutation test for pair-wise PLS-DA models comparing the controls with animals treated with the electro-acupuncture (top row) or moxibustion (bottom row) stimulation on the GM acupoints.

