

Supplementary material.

1. To confirm the successful development of liver cirrhosis, we performed Masson's trichrome staining of liver biopsy. It showed that collagen fibers formed fibrous septa and disordered lobular structure.

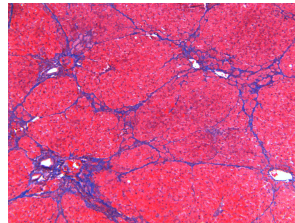


Figure 1: Masson's trichrome staining in liver cirrhosis model group (magnification  $\times 200$ ).

2. Primer sequence used for real-time PCR.

Table 1: Primer sequence used in real-time PCR detection and analysis.

Gene symbol	Primers	Amplicon (bp)
casp3	F:ACTGGAAAGCCGAAACTCTTCATCA R: GGAAGTCGGCCTCCACTGGTATC	127
p53	F: TCACCTCCACACCTCCACCT R: CCTGTCGTCCAGATACTCAGCATA	188
casp7	F: TATCAACGACACCGACGCTAAT R: GCCTGGAACCGTGGAGTAAG	82
P14ARF	F: GCTCTCCTGCTCTCCTATGGT R: CAGAAGTTATGCCTGTCGGTGA	269
Bcl-2	F: GGGCTACGAGTGGGATACTGGAG R: CGGGCGTTCGGTTGCTCT	101
E2F1	F: AACGGAGGCTGGATCTGGAA R: ATTCTTGGAATCTTGGCAATGAG	293
Apaf-1	F: GCTCTCCTCTCGTCGTGTCT R: GTCTGTGTAGTAGTCCTTGATGTCT	200
MCL1	F: GCCAAACACTTAAAGAGCATAAACC R: CCGCTTCGTCCTTACAAGAAC	87
Casp6	F: AGAAGAACTACTGCTCAAGATTCAC R: CCAACCAGGCTCTGACACTT	180
P73	F: TGTCGCCAACCTTATCAAGCTC R: GCATGGCCAGCTCTGTTCTC	139
PCNA	F: CATATTGGAGATGCTGTGGTGAT R: CATACTGAGTGTTACTGTAGGAGAC	231
Actin	F: GGAGATTACTGCCCTGGCTCCTA	150

### 3. Protein expression data for each protein.

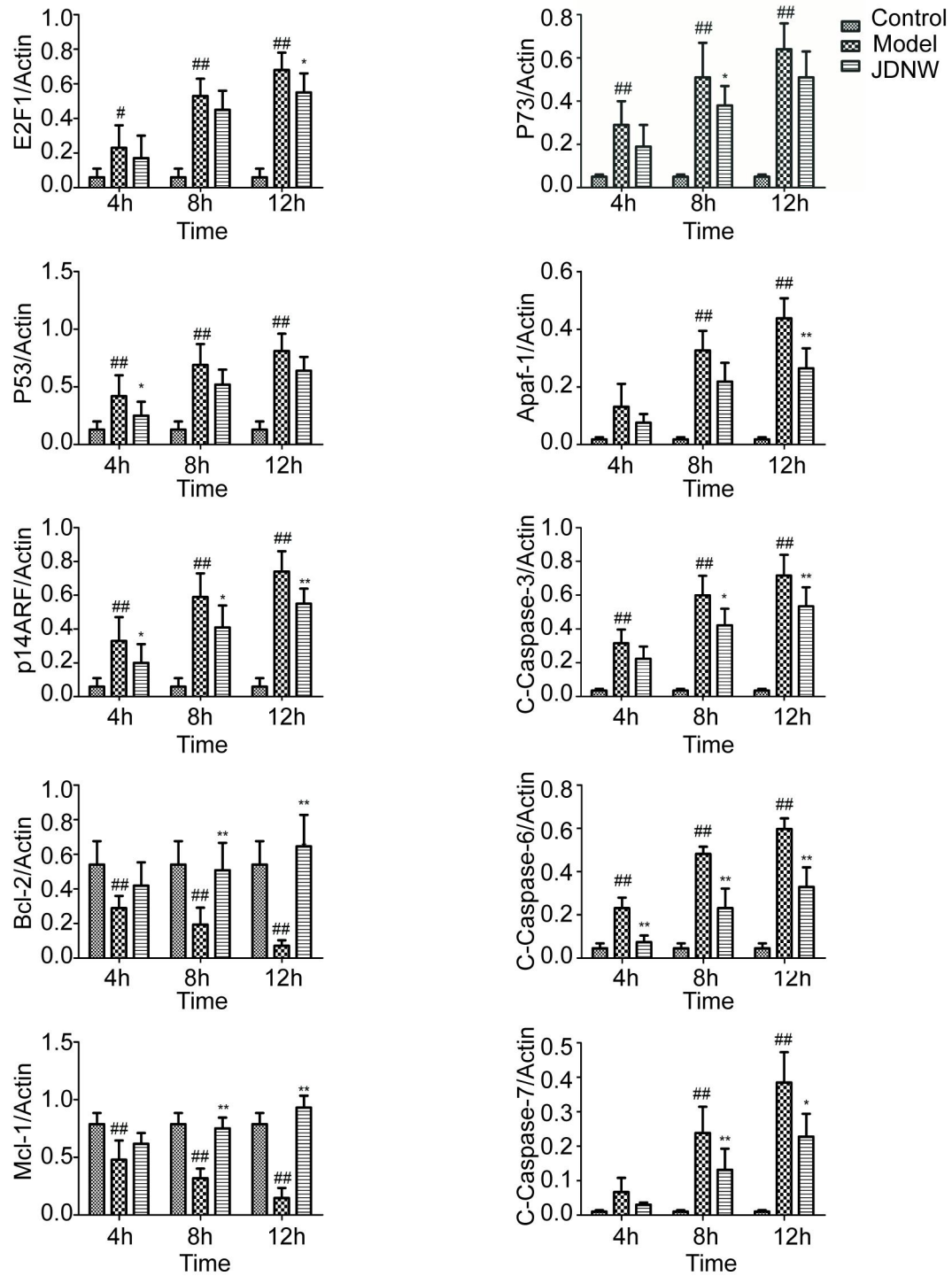


Figure 2: Effect of JDNW on the expression of E2F1, P53, P73, p14ARF, Apaf-1, Cleaved Caspase-3, 6 and 7, and Bcl-2 and Mcl-1 protein expression levels in the liver tissues of ACLF model rats. <sup>#</sup> $P < 0.05$ ; <sup>##</sup> $P < 0.01$ , vs. control group. <sup>\*</sup> $P < 0.05$ ; <sup>\*\*</sup> $P < 0.01$ , vs. model group.