

Supplementary Materials

Table S1: Criteria used to assess methodological quality*

	Score		
	0	1	2
Randomization	...	Not concealed or not sure	Concealed randomization
Blinding	Not blinded	...	Adjudicators blinded
Analysis	Other	...	Intention to treat
Patient selection	Selected patients or unable to tell	Consecutive eligible patients	...
Comparability of groups at baseline	No or not sure	Yes	...
Extent of follow-up	<100%	100%	...
Treatment protocol	Poorly described	Reproducibly described	...
Cointerventions	Not described	Described but not equal or not sure	Well described and all equal
Outcomes	Not described	Partially described	Objectively defined

*The first 3 questions and the last 2 questions had possible scores of 0, 1, or 2. The middle 3 questions had possible scores of 0 or 1. The highest possible score was 14. Ellipses indicate data not applicable.

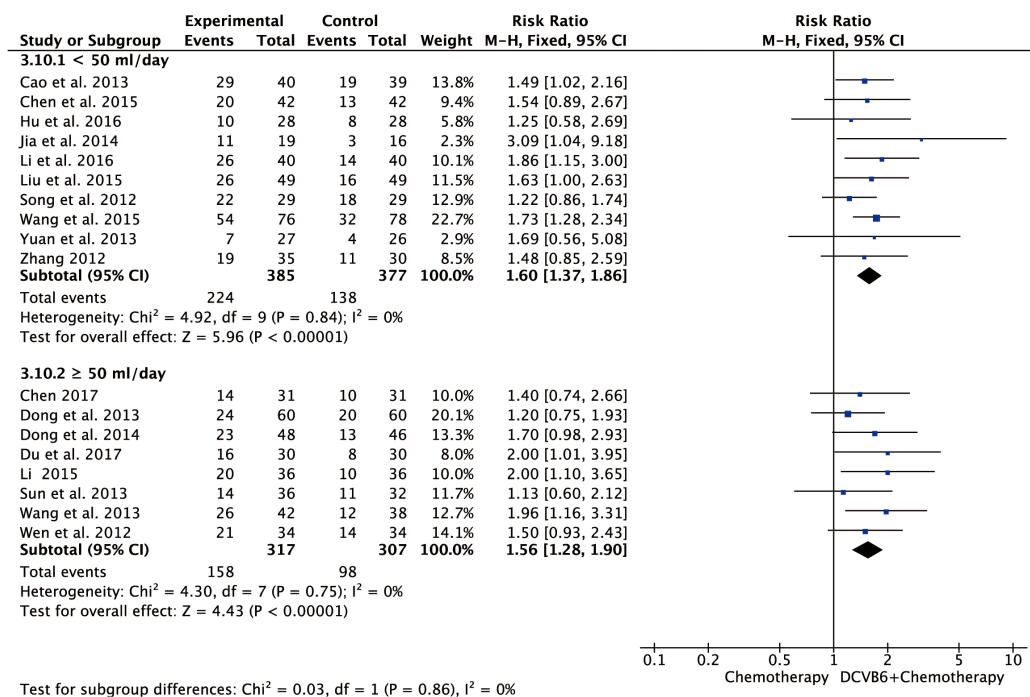


Figure S1: Subgroup analysis of ORR for different doses of DCVB6 injection

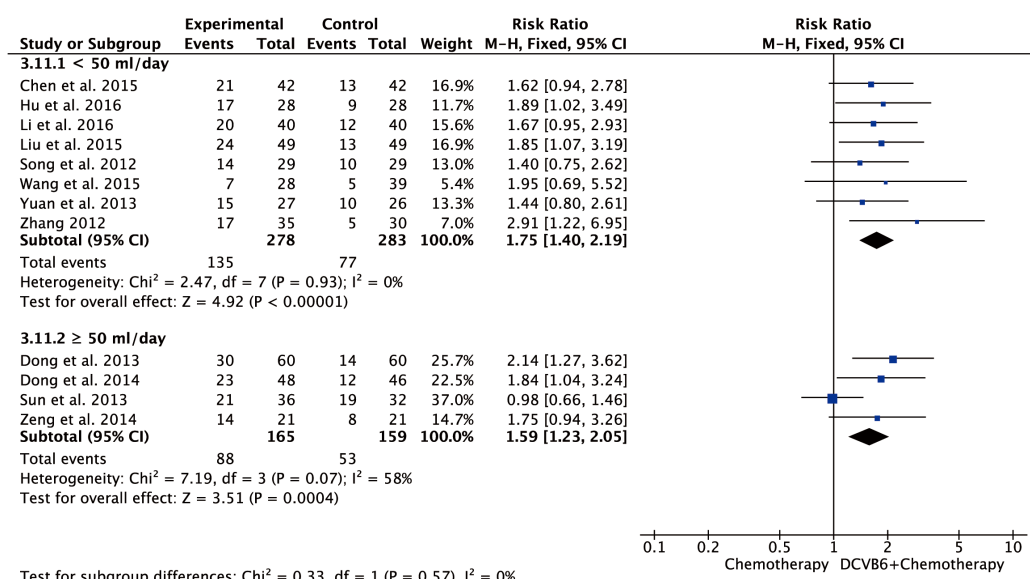


Figure S2: Subgroup analysis of KPS for different doses of DCVB6 injection

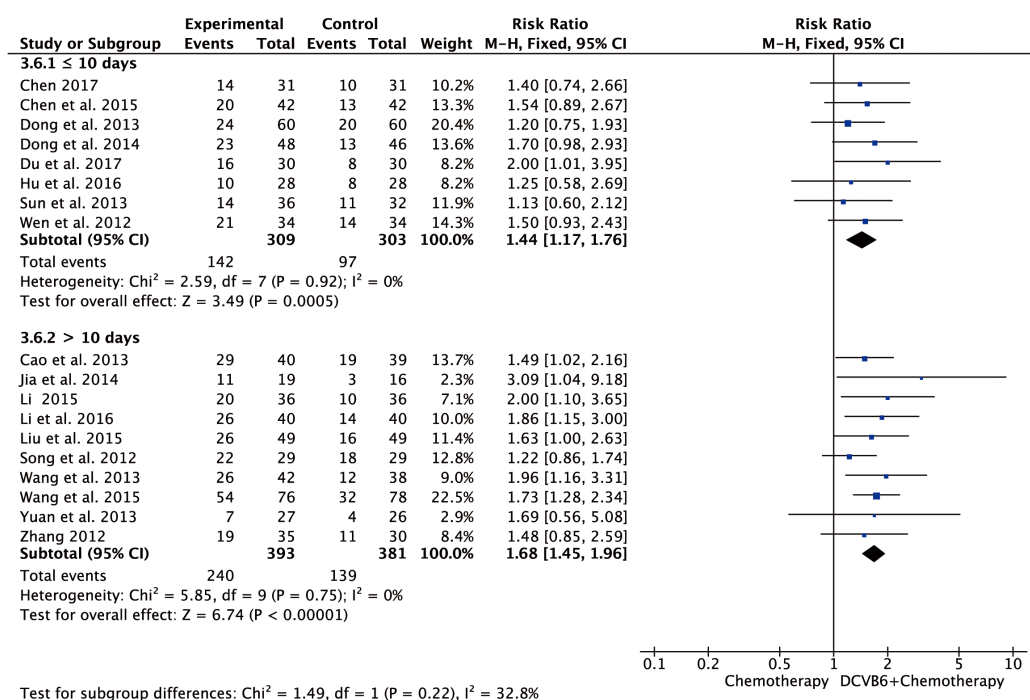


Figure S3: Subgroup analysis of ORR for different durations of DCVB6 injection

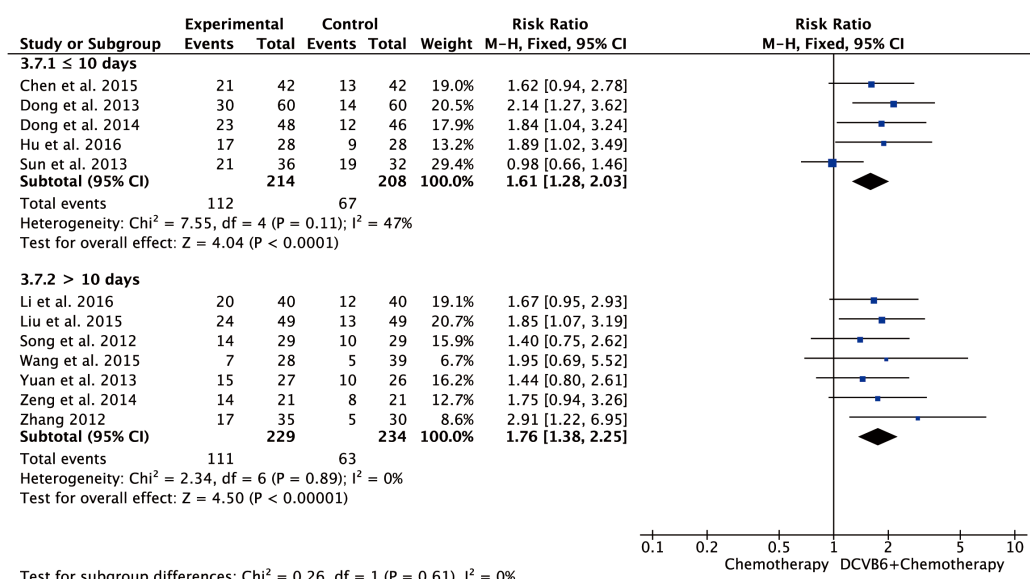


Figure S4: Subgroup analysis of KPS for different durations of DCVB6 injection

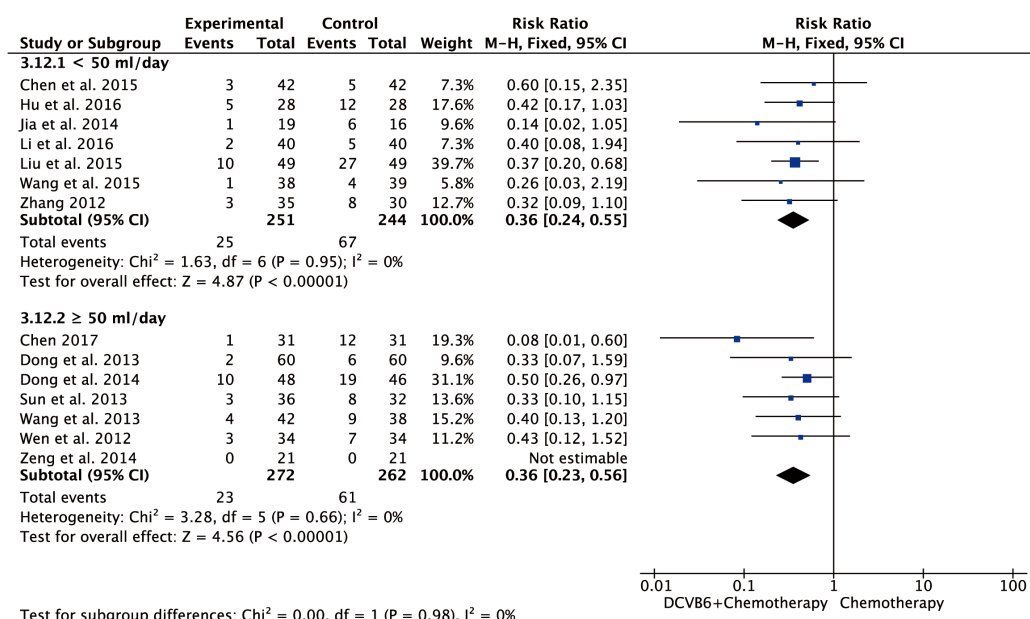


Figure S5: Subgroup analysis of WBC toxicity for different doses of DCVB6 injection

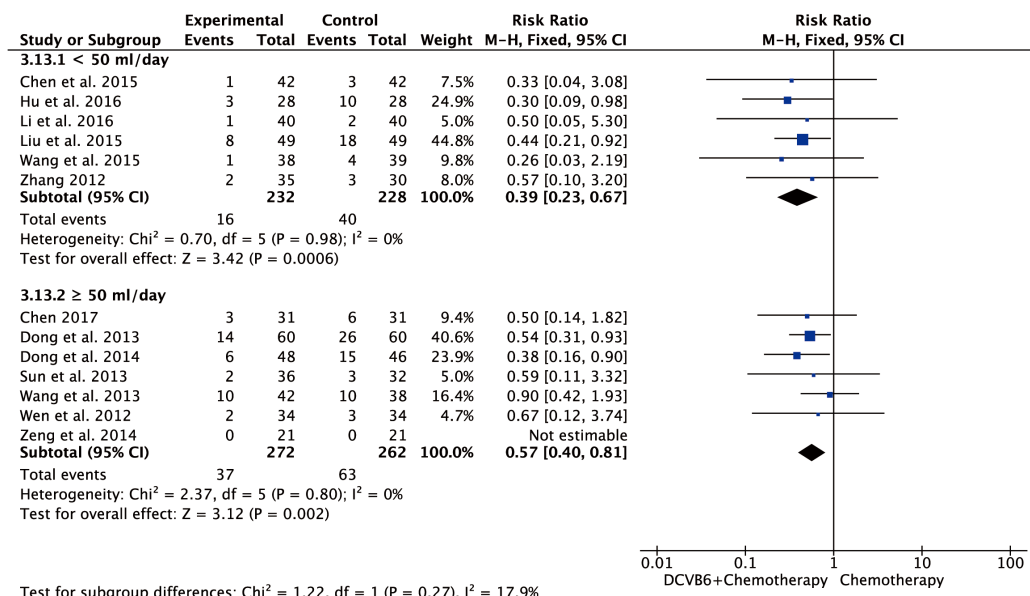


Figure S6: Subgroup analysis of vomiting for different doses of DCVB6 injection

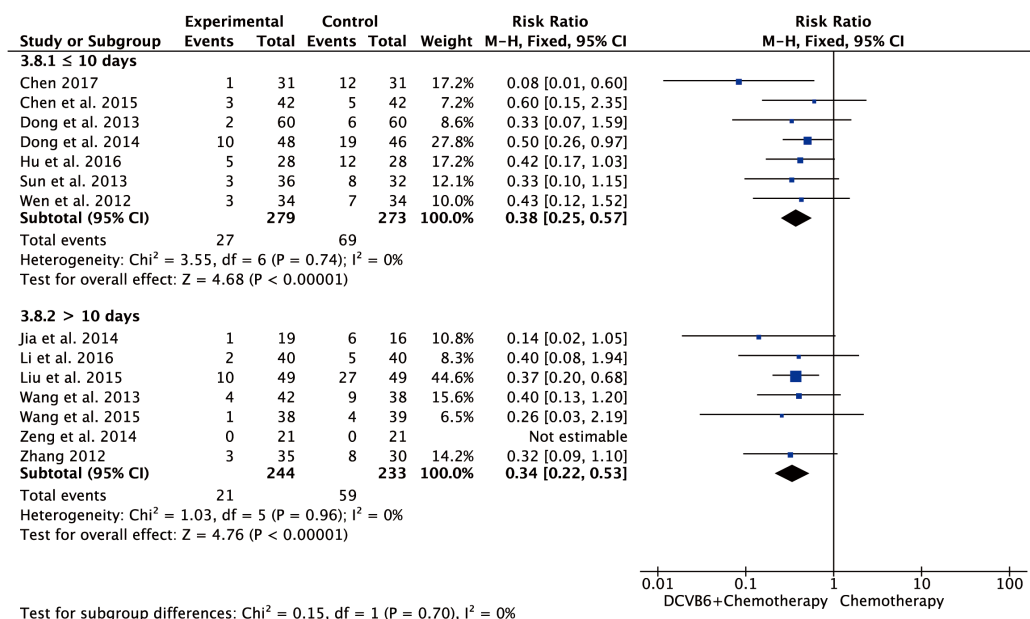


Figure S7: Subgroup analysis of WBC toxicity for different durations of DCVB6 injection

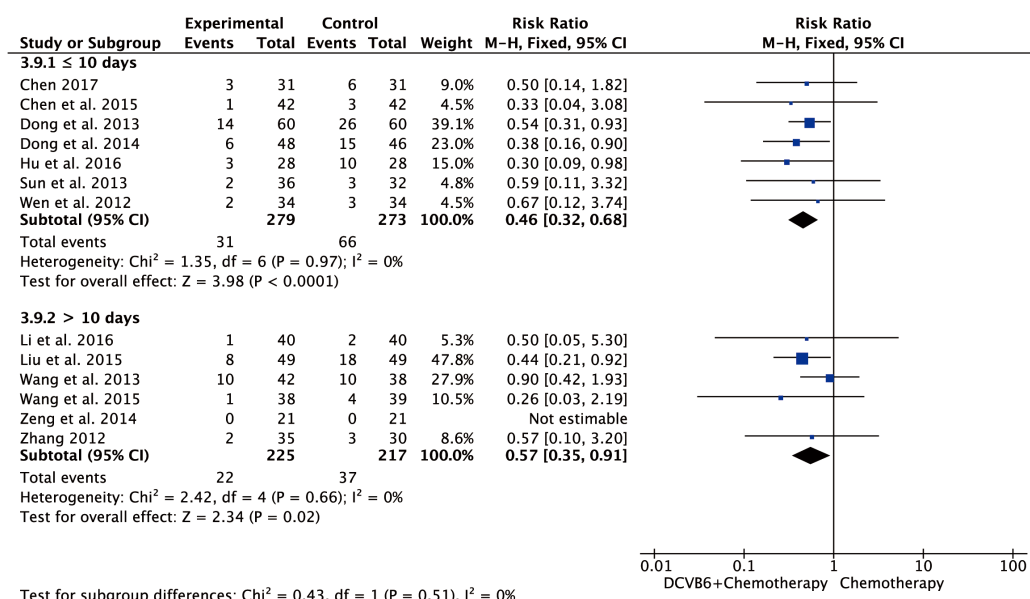


Figure S8: Subgroup analysis of vomiting for different durations of DCVB6 injection