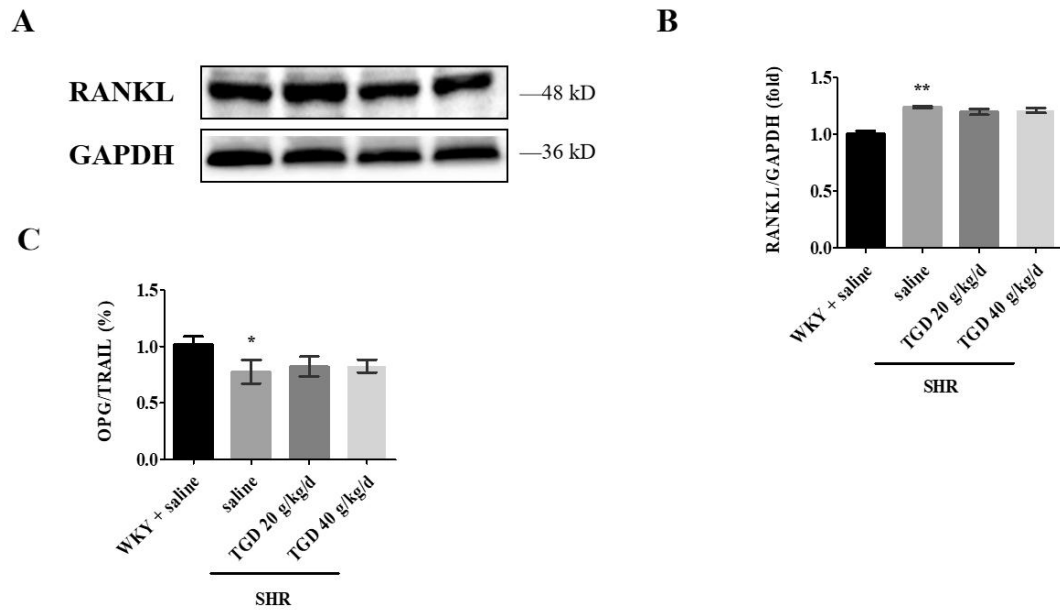


**Figure S1. Effect of TGD on blood pressure.** (A-C) 14 week-old male Wistar-Kyoto (WKY) and spontaneously hypertensive rats (SHRs) were obtained. BP and heart rate were recorded for 12 weeks using a non-invasive rat tail blood pressure meter (n=5 per group). All of the above values are shown as mean  $\pm$  SD. \*  $P < 0.05$  compared with WKY + saline group; \*\*  $P < 0.01$  compared with WKY + saline group; #  $P < 0.05$  compared with SHR + saline group, ##  $P < 0.01$  compared with SHR + saline group.



**Figure S2. Effect of TGD on RANKL, and OPG/TRAIL ratio.** (A, B) Representative digital western blots for RANKL and GAPDH, and corresponding quantitative data (n=3 per group). (C) OPG/TRAIL was measured. All of the above values are shown as mean  $\pm$  SD. \*  $P < 0.05$  compared with WKY + Saline group; \*\*  $P < 0.01$  compared with WKY + Saline group; #  $P < 0.05$  compared with SHR + Saline group, ##  $P < 0.01$  compared with SHR + Saline group.