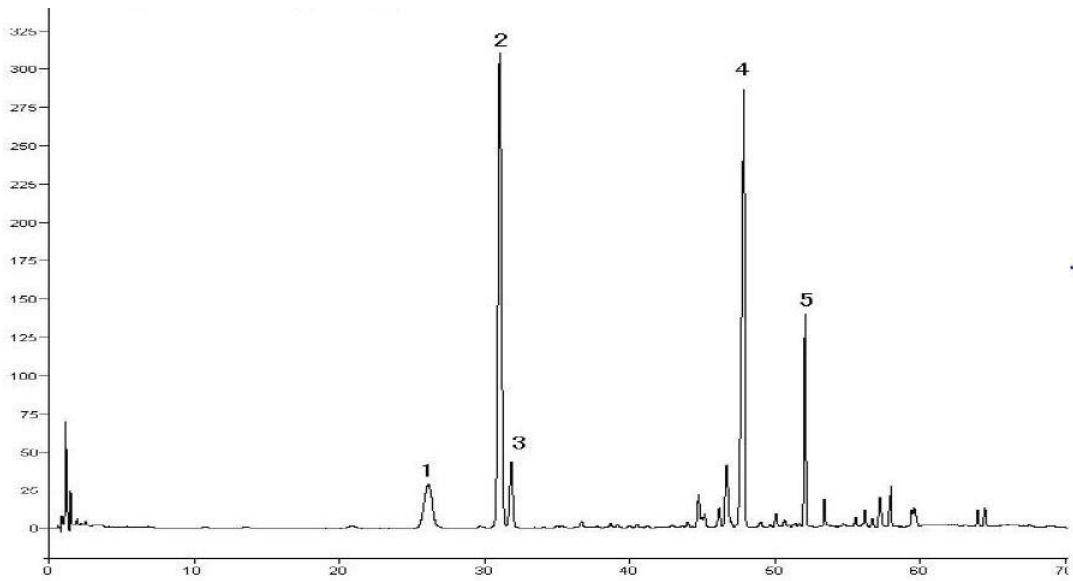


Chromatogram



1: *Notoginsenoside R1* 2: *ginsenoside Rg1* 3: *ginsenoside Re*

4: *ginsenoside Rb1* 5: *ginsenoside Rd*

Certificate of Analysis

检验项目 Test items	标准规定 Specifications	检验结果 Results	单项判定 Individual Conclusion
重量差异 Variation	±10%	±10%	合格 Compliant
崩解时限 Disintegration	应≤60分钟 Not more than 60 minutes	6分钟 6 minutes	合格 Compliant
微生物限度 Microbial limit	需氧菌总数 Bacteria: ≤10 ³ cfu/g	<10 cfu/g	合格 Compliant
	霉菌和酵母菌总数 Molds and yeasts: ≤10 ² cfu/g	<10 cfu/g	合格 Compliant
	大肠埃希菌 Escherichia Coli: 1g中不得检出 none in 1g	符合规定 Compliant	合格 Compliant
指纹图谱 Fingerprint	供试品与对照品指纹图谱经相似度计算, 其相似度不得低于 0.95 The similarity between the tested product and the reference product should not be less than 0.95	1.000	合格 Compliant
【含量】Assay (标示量计 Labeled amount)	三七皂苷 Notoginsenoside R ₁ : ≥5.0%	9.8%	合格 Compliant
	人参皂苷 Ginsenoside Rg ₁ : ≥25.0%	30.8%	合格 Compliant
	人参皂苷 Ginsenoside Re: ≥2.5%	4.3%	合格 Compliant
	人参皂苷 Ginsenoside Rb ₁ : ≥27.0%	32.1%	合格 Compliant
	人参皂苷 Ginsenoside Rd: ≥5.0%	8.3%	合格 Compliant
	R ₁ +Rg ₁ + Re + Rb ₁ + Rd: ≥75%	85%	合格 Compliant