

Research Article

Scutellarein Aggravated Carbon Tetrachloride-Induced Chronic Liver Injury in Gut Microbiota-Dysbiosis Mice

Zhimin Miao , Yong Lai , Yingying Zhao, Lingmin Chen, Jianeng Zhou, Chunyan Li, and Hai Lan 

College of Pharmacy, Dali University, Dali 671000, China

Correspondence should be addressed to Yong Lai; laiyong8879@163.com and Hai Lan; lanhai8696@126.com

Received 14 September 2020; Revised 24 November 2020; Accepted 30 November 2020; Published 15 December 2020

Academic Editor: Weicheng Hu

Copyright © 2020 Zhimin Miao et al. This is an open access article distributed under the Creative Commons Attribution License, which permits unrestricted use, distribution, and reproduction in any medium, provided the original work is properly cited.

Scutellarein (SCU) is an herbal flavonoid, showing hepatoprotective potentials. The study was aimed to investigate whether the hepatoprotective effect of SCU is dependent on the integrity of gut microbiota. Mice received repeated intraperitoneal injections of CCl₄, followed with or without SCU treatment (15, 30, and 60 mg/kg). Gut microbial community of mice was disrupted by administrating a cocktail of antibiotics (ampicillin, neomycin sulfate, metronidazole, and vancomycin) in drinking water. The results showed SCU plus antibiotics aggravated CCl₄-induced chronic liver injury, as demonstrated by liver function analysis, histological analysis, and TUNEL assay. SCU activated CYP2E1 expression and worsened CYP2E1-mediated lipid peroxidation and oxidative stress as coadministered with antibiotics. Moreover, when gut microbiota was disrupted by antibiotics, SCU activated I κ B α /NF- κ B pathway and promoted the release of subsequent proinflammatory cytokines including interleukin-6 (IL-6), interleukin-1 β (IL-1 β), and tumor necrosis factor- α (TNF- α). Remarkably, the 16S rRNA sequencing demonstrated that SCU greatly decreased the relative abundance of *Bifidobacterium* and *Lactobacillus* and increased the relative abundance of *Enterococcus* in gut microbiota-dysbiosis mice. Spearman correlation analysis showed that *Lactobacillus* was positively correlated with SOD and negatively correlated with AST. Collectively, the hepatoprotective effect of SCU is reversed under antibiotics intervention, which may partly involve the activation of CYP2E1 and I κ B α /NF- κ B pathway and diminishment of *Lactobacillus*.

1. Introduction

The gut microbiota is a key bridge between host and various environmental factors including diet, heredity, and stress. Recently, mounting evidence suggests that the gut microbiota plays a crucial role in herbal medicine therapies, and it has been proved that a lot of natural products including honokiol and aged citrus peel exert their pharmacological activities via remodeling gut microbiota, such as the enrichment of *Lactobacillus* and *Bifidobacterium*, as well as *Akkermansia*, and the reduction in *Helicobacter* [1, 2]. Therefore, it is not surprising that antibiotics usually deteriorate the beneficial effects of natural products by destroying the gut microbial community.

Chronic liver injury induced by long-term drug therapies, alcohol abuse, and virus infection occurs frequently,

arousing great attention in the world. In recent years, bioactive phytochemicals such as flavonoids have attracted considerable attention for hepatoprotection due to their multiple targets and low adverse effects [3]. Scutellarein (SCU) is an herbal flavonoid derived from Chinese traditional herb, *Erigeron breviscapus* (Vant.) Hand-Mass, and exerts multiple pharmacological effects, such as anti-oxidation and anti-inflammation, showing hepatoprotective potentials [4, 5]. In healthy volunteers and rats, the oral bioavailability of SCU was found to be merely 2.2% and 10.67%, respectively [4]. The physiological effects of SCU are in notable contrast to its poor bioavailability. So, we hypothesized the gut microbiota might mediate the hepatoprotective effects of SCU.

In the present study, we investigated the effects and mechanisms of SCU on CCl₄-induced chronic liver injury in gut microbiota-dysbiosis mice.

2. Materials and Methods

2.1. Drugs and Animals. SCU (purity >98%) was obtained from Yunnan Plant Pharmaceutical Co., Ltd., (Kunming, Yunnan, China). CCl₄ and antibiotics were purchased from Sinoreagent (Shanghai, China). Male BALB/c mice (6–8 weeks old and 18–22 g) were bred at and obtained from Tianqin Biotechnology Co., Ltd., no.SCXK-2019-0004 (Changsha, Hunan, China). Before experimental treatment, all mice were kept in the specific pathogen-free mouse room for 7 days. All animal experiments were performed in accordance with the guidelines of the Care and Use of Laboratory Animals of the Laboratory Animal Ethical Commission of Dali University (no. 2017–1201) and all efforts were taken to minimize animals suffering.

2.2. Experimental Design. Mice were randomly divided into six groups ($n = 10$ per group). (1) Normal group (NA); (2) CCl₄-treated model group (MA); (3) CCl₄ and 15 mg/kg SCU cotreatment group (MLA); (4) CCl₄ and 30 mg/kg SCU cotreatment group (MMA); (5) CCl₄ and 60 mg/kg SCU cotreatment group (MHA). The drinking water in the NA, MA, MLA, MMA, and MHA groups contains a cocktail of antibiotics (ampicillin (1 g/liter), neomycin sulfate (1 g/liter), metronidazole (1 g/liter), and vancomycin (0.5 g/liter)). (6) CCl₄ and 60 mg/kg SCU cotreatment group (MH) acts as a positive control and the drinking water in this group was sterile without antibiotics. Chronic liver injury in mice was induced by intraperitoneal injection of 1 ml/kg CCl₄ (diluted 1:9 in olive oil) three times per week. SCU (dissolved in 0.5% CMC-Na) was given by gavage every day. All animals were treated for an additional five weeks. Mice were euthanized and blood samples, stools, and liver tissues were collected 12 h after the final injection of CCl₄.

2.3. Liver Function Measurement. The collected blood samples were centrifuged (3000 rpm, 4°C, 7 min) to obtain serum. The levels of ALT, AST, TBIL, and ALB in the serum were measured according to the manufacturer's instructions (Nanjing Jiancheng Bioengineering Institute, China).

2.4. Histological Analysis. Liver samples were fixed in 4% paraformaldehyde for 24 h and then were embedded in paraffin wax. Embedded tissues were cut into 4 μm thick sections and stained with hematoxylin and eosin (H&E) for the histological analyses. Histological score was assessed based on hepatocyte necrosis and hepatic inflammatory cell infiltration.

2.5. TUNEL Assay. Hepatocyte apoptosis in the liver tissue was detected by DeadEndTM Fluorometric TUNEL System according to the manufacturer's protocol (Promega, USA). The paraffin-embedded sections were stained with the terminal deoxynucleotidyl transferase dUTP nick end labelling method. The sections were analyzed under a fluorescence microscope and apoptosis area was quantified by Image J.

2.6. Oxidative Stress Assessment. 100 mg snap-frozen liver samples were weighed and homogenized in cold physiological saline. The homogenates were centrifuged (12000 rpm, 4°C, 30 min) to obtain the supernatant. Commercial kits were used to determine the SOD activity and MDA level (Nanjing Jiancheng Bioengineering Institute, China).

2.7. Immunohistochemistry (IHC). Immunohistochemistry for CYP2E1 was performed with the paraffin-embedded liver sections. After blockade of inner peroxidase, sections were incubated with the anti-CYP2E1 antibody (ab28146, 1:500, Abcam, Cambridge, UK). Then, sections were incubated with HRP-conjugated secondary antibodies at room temperature for 15 min. Finally, the sections were stained with DAB substrate and counterstained with hematoxylin. Areas of CYP2E1 expression were quantified by Image J.

2.8. Real-Time Quantitative PCR (RT-qPCR). Total RNA of 100 mg snap-frozen liver samples was extracted by Trizol reagent (Thermo Fisher Scientific, NY, USA). Total RNA was reverse-transcribed into complementary DNA using RevertAid First Strand cDNA Synthesis Kit according to the manufacturer's instructions (Thermo Fisher Scientific, NY, USA). RT-qPCR was operated with a StepOnePlusTM Real-Time PCR system (Thermo Fisher Scientific, NY, USA) in combination with TB Green[®] Premix Ex TaqTM II (Takara Bio, Inc., Shiga, Japan). The reaction was as follows: a pre-cycling stage at 95°C for 30 s, 40 cycles of denaturation at 95°C for 5 s, and annealing at 60°C for 30 s. The relative expression of mRNA was calculated using the $2^{-\Delta\Delta Ct}$ method and normalized to GAPDH. The PCR primer sequences are listed in Table 1.

2.9. Western Blot. Total protein of 100 mg snap-frozen liver tissues was extracted by RIPA lysis buffer and protein concentration was determined by BCA assay kit (Solarbio, Beijing, China) based on the manufacturer's protocols. 40 μg protein was loaded in 10% SDS-PAGE gel and transferred to PVDF membranes. Rabbit anti-IκBα (#4812, 1:1000, Cell Signaling Technology, Inc., Danvers, MA, USA), anti-NF-κB p65 (#8242, 1:1000, Cell Signaling Technology, Inc., Danvers, MA, USA), anti-CYP2E1 (ab28146, 1:2000, Abcam, Cambridge, UK), anti-Histone H3 (#4499, 1:2000, Cell Signaling Technology, Inc., Danvers, MA, USA), and anti-GAPDH (ab9484, 1:2500, Abcam, Cambridge, UK) antibodies were used and goat anti-rabbit IgG H&L (HRP) (ab205718, 1:5000, Abcam, Cambridge, UK) as the secondary antibody. The membranes were visualized by ECL reagents, and the protein bands were detected by G:BOX gel imaging system (Syngene, Cambridge, UK).

2.10. 16S rRNA Gene Sequence Analysis. The sequencing service was provided by Personal Biotechnology Co., Ltd. (Shanghai, China). Fresh feces samples were collected and the total DNA was isolated using QIAamp DNA Stool Kit (Qiagen, Valencia, USA). The purity and concentration of

TABLE 1: Primers for real-time PCR.

Genes	Forward primers (5'-3')	Reverse primers (5'-3')	Accession number
IL-6	CTGCAAGAGACTTCCATCCAG	AGTGGTATAGACAGGTCTGTTGG	NM_031168
IL-1 β	TGTGAAATGCCACCTTTTGA	GGTCAAAGGTTTGGGAAGCAG	NM_008361
TNF- α	CAGGCGGTGCCTATGTCTC	CGATCACCCCGAAGTTCAGTAG	NM_013693
CYP2E1	TTCCCTAAGTATCCTCCGTGAC	CTTAATCGAAGCGTTTGTGTA	NM_021282
GAPDH	GGTTGTCTCCTGCGACTTCA	TGGTCCAGGGTTTCTTACTCC	NM_008084

DNA was measured by NanoDrop 2000 ultraviolet spectrophotometer. The bacterial 16 S rRNA gene V3–V4 region was amplified by PCR using the forward primer (338F: 5'-ACTCCTACGGGAGGCAGCA-3') and the reverse primer (806R: 5'-GGACTACHVGGGTWTCTAAT -3'). The gut microbiota composition was analyzed on an IlluminaMiSeq platform. The alpha diversity including Chao1 and Shannon index was calculated using OUT in QIIME (Denver, USA). The beta diversity was visualized by Principal Coordinate Analysis (PCoA). The genera changes were measured using Z score. The correlation between genera and liver injury indicators was analyzed using spearman correlation analysis. All the figures were performed by Personalbio GenesCloud (<https://www.genescloud.cn/chart/>). The raw data were deposited into NCBI Sequence Read Archive (SRA) database.

2.11. Statistical Analysis. All data are expressed as the mean \pm SD. Comparisons between groups were assessed by a one-way analysis of variance (AVONA), and Dunnett's test was employed as a post hoc test. $P < 0.05$ was considered significant.

3. Results

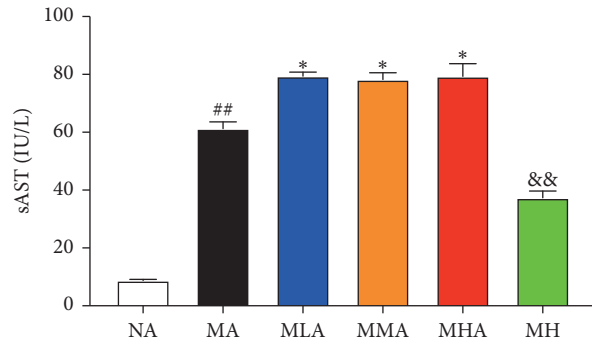
3.1. Effects of SCU plus Antibiotics on Hepatic Injury and Apoptosis. The effects of SCU in gut microbiota-dysbiosis mice were first assessed by serum biochemical parameters (ALT, AST, TBIL, and ALB) and 60 mg/kg SCU without antibiotics intervention (MH group) acts as a positive control. As shown in Figures 1(a)–1(c), serum ALT, AST, and TBIL levels were markedly elevated in the MA group with respect to the NA group. Interestingly, serum ALT, AST, and TBIL levels of the SCU plus antibiotics groups were significantly higher than those of the MA group. ALB levels had no significant difference among all groups (Figure 1(d)). Histological observation and TUNEL assay showed that SCU plus antibiotics treatment had higher histological score and hepatocyte apoptosis areas (Figures 1(e) and 1(f)), which was consistent with the results of serum parameters.

3.2. Effects of SCU plus Antibiotics on CYP2E1-Mediated Oxidative Stress. CCl₄ was mainly metabolized by hepatic CYP2E1 to yield free radical, which can irreversibly oxidize biological phenomenon, resulting in lipid peroxidation and oxidative stress, leading ultimately to hepatotoxicity [6]. As shown in Figures 2(a)–2(c), CCl₄ challenge dramatically increased both the mRNA and protein expression of

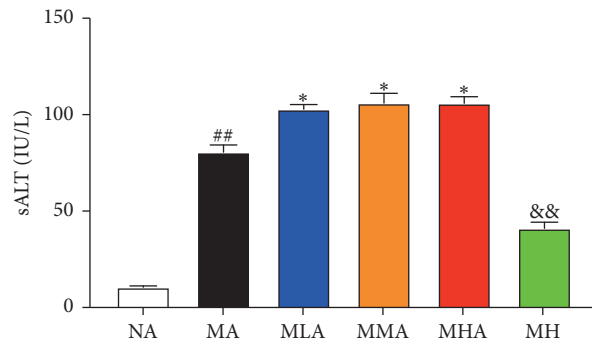
CYP2E1 in the liver. Treatment of SCU plus antibiotics did not inhibit but activate the mRNA and protein expression of CYP2E1. Then, we measured the hepatic levels of SOD and MDA to quantify oxidative liver injury. As shown in Figures 2(d) and 2(e), compared with the NA group, SOD activity was decreased significantly, and MDA level was increased significantly in the MA group. SCU plus antibiotics treatment showed severe lipid peroxidation and oxidative stress, as proved by higher MDA level and lower SOD activity.

3.3. Effects of SCU plus Antibiotics on I κ B α /NF- κ B Pathway-Mediated Inflammation Response. Oxidative stress is suggested a trigger of cell inflammation, we then assessed the IL-6, IL-1 β , and TNF- α mRNA levels that are the key inflammatory cytokines in the liver tissues by RT-qPCR. As shown in Figure 3(a), CCl₄ challenge dramatically increased the IL-6, IL-1 β , and TNF- α mRNA levels in the liver tissue. However, the IL-6, IL-1 β , and TNF- α mRNA levels were even higher in the SCU plus antibiotics groups. Activation of I κ B α /NF- κ B pathway has been shown to induce the production of cytokines, thus we measured the I κ B α and NF- κ B expression levels in the liver. As shown in Figures 3(d)–3(f), the expression of I κ B α in the MA group was decreased relative to the NA group, but this trend was exacerbated by SCU plus antibiotics cotreatment. In the MA group, we detected reduced cytoplasmic NF- κ B and increased nuclear NF- κ B expression relative to the NA group. However, SCU plus antibiotics cotreatment aggravated these changes in NF- κ B levels caused by repeated injections of CCl₄.

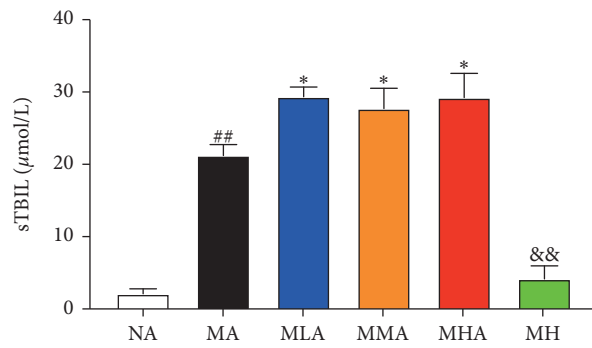
3.4. Effects of SCU plus Antibiotics on Gut Microbiota. We sought to determine the effect of SCU plus antibiotics on gut microbiota diversity and compositions. We analyzed the gut microbiota in feces samples from all groups by 16 S rRNA sequencing. Microbiota community diversity was first evaluated by α -diversity employing indices including Chao1, Shannon, and Pielou indices that represent the richness, diversity, and uniformity of gut microbiota, respectively. β -Diversity was used to compare the similarity of overall community structure, which employed an unsupervised multivariate statistical assessment such as PCoA. As shown in Figure 4(a), Chao1, Shannon, and Pielou indices had no significant difference among five groups. As shown in Figure 4(b), the structure of gut microbiota in the MA group was more similar to that of the NA group. Furthermore, taxon-based analysis at phylum level was preliminarily used to assess the composition of



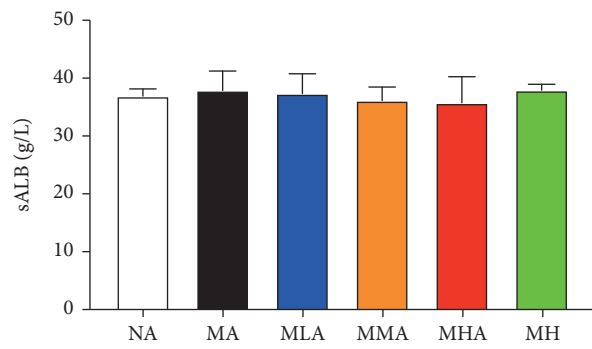
(a)



(b)



(c)



(d)

FIGURE 1: Continued.

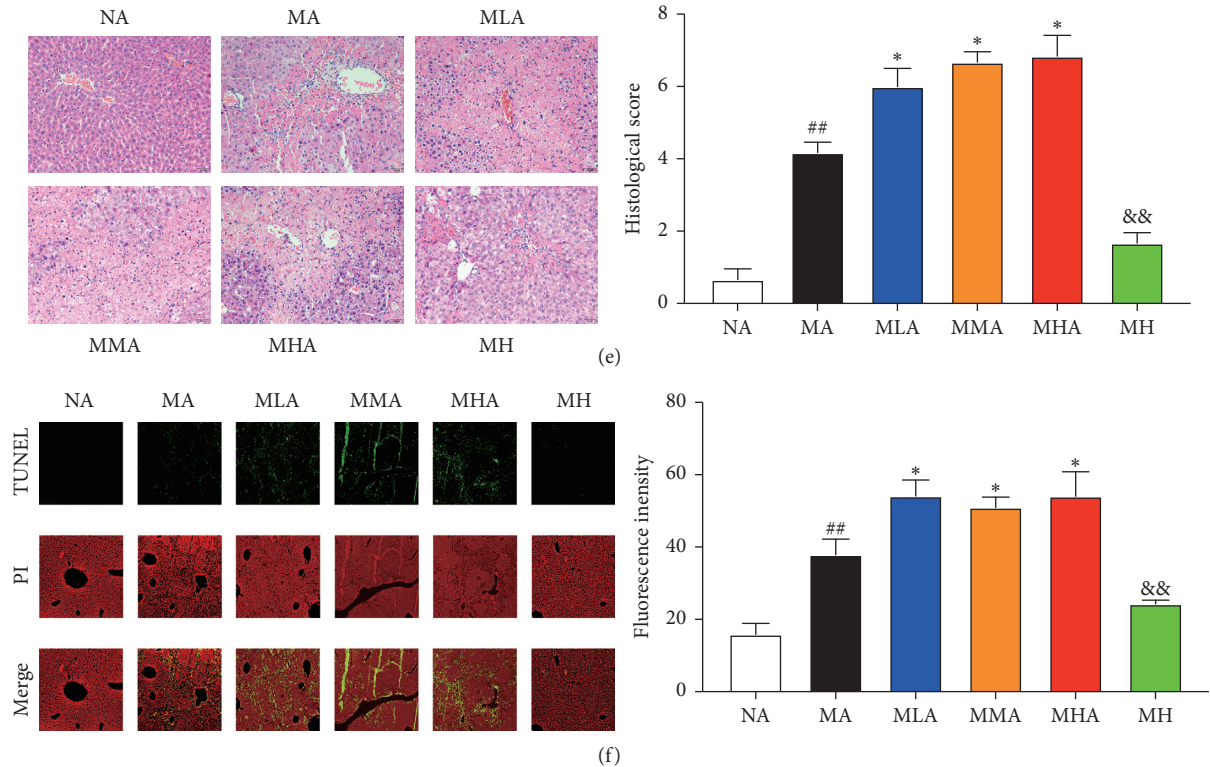


FIGURE 1: Effects of SCU on hepatic injury and apoptosis. (a) Serum aspartate aminotransferase (AST), (b) alanine aminotransferase (ALT), (c) total bilirubin (TBIL), and (d) albumin (ALB) levels. (e) Liver histology (hematoxylin and eosin (H&E)) of each group, scale bar $50\ \mu\text{m}$, magnification $200\times$. (f) TUNEL assay in the livers from different treatment groups, scale bar $100\ \mu\text{m}$, magnification $200\times$. The data and error bars are presented as mean \pm SD ($n=5$). $##P < 0.01$ vs. NA group. $*P < 0.05$ vs. MA group. $\&\&P < 0.01$ vs. MHA group.

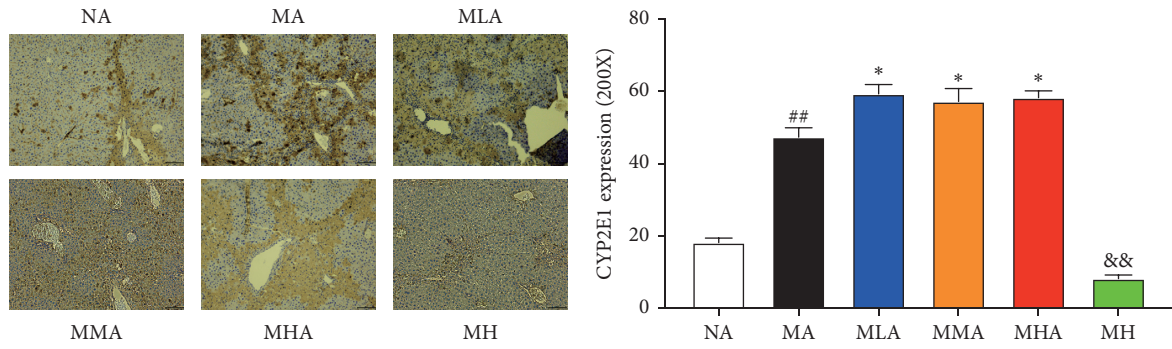
gut microbiota from all groups (Figure 4(c)). As shown in Figure 4(d), the *Bacteroidetes/Firmicutes* ratio in the MA group was significantly increased relative to the NA group. However, the *Bacteroidetes/Firmicutes* ratio had no significant difference between the MA group and SCU plus antibiotics groups.

3.5. Effects of SCU plus Antibiotics on Key Phylotypes of Gut Microbiota. We sought to determine which bacterial members of the microbiome were responsible for the observed reversed hepatoprotective effect of SCU. We performed Z score to assess the changes of 15 genera that showed high abundance (Figure 5(a)). The relative abundance of *Bifidobacterium* and *Lactobacillus* was significantly increased and the relative abundance of *Enterococcus* was significantly decreased in the MA group relative to the SCU plus antibiotics groups. The relative abundance of *Akkermansia* was significantly decreased in the MA group than that in the NA group (Z score >2) (Figure 5(b)). Moreover, we investigated the relationship between the 15 genera and liver injury indicators (AST, ALT, TBIL, ALB, SOD, MDA, IL-6, IL-1 β , and TNF- α) by using spearman correlation analysis, and the result demonstrated that *Lactobacillus* was positively correlated with SOD and negatively correlated with AST. *Bacteroides* was negatively correlated with SOD (Figure 5(c)).

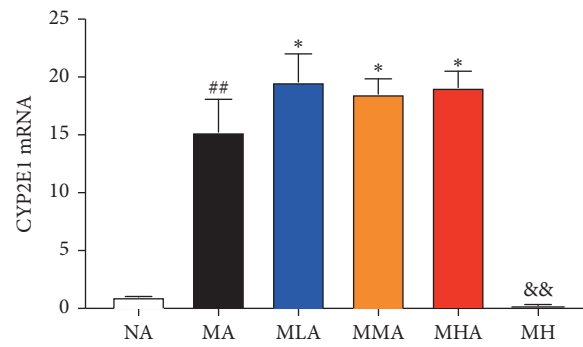
4. Discussion

The gut microbiota plays a crucial role in mediating the pharmacological activities of various natural products. Many flavonoids have been reported to exhibit their beneficial effects by modulating the gut microbiota [7–10]. In this study, we used a cocktail of antibiotics to disrupt the gut microbiota and observed the alteration of hepatoprotective effects of SCU on CCl_4 -induced chronic liver injury.

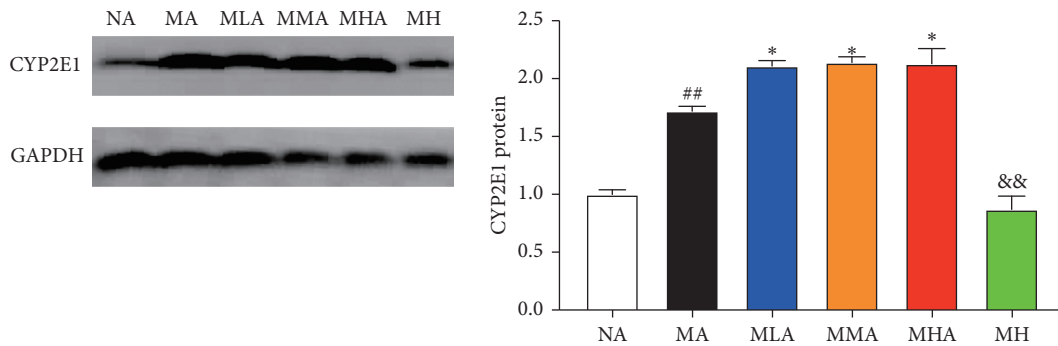
Serum ALT and AST levels are the preferred indicators for evaluation of liver function. CCl_4 -induced hepatocellular damage and the subsequent rupture of the plasma membrane cause the release of intracellular enzymes such as ALT and AST into the systemic circulation, thereby increasing serum ALT and AST levels [11]. In our study, CCl_4 intoxication induced a profound elevation in the serum ALT and AST levels. However, these transaminases were elevated when SCU is cotreated with antibiotics. Elevated serum bilirubin levels may be caused by release of unconjugated or conjugated bilirubin from injured hepatocytes [12]. Serum TBIL level was dramatically increased by CCl_4 , which was still maintained high level in the SCU plus antibiotics groups. The liver is the exclusive site of synthesis of ALB and serum ALB serves as a true test of hepatic synthetic function [12]. However, serum ALB has a very long half-life, which may not be affected in the short-term experimental liver injury model. Our results demonstrated that the serum ALB



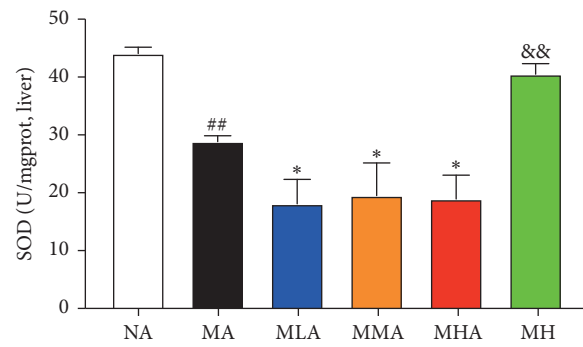
(a)



(b)



(c)



(d)

FIGURE 2: Continued.

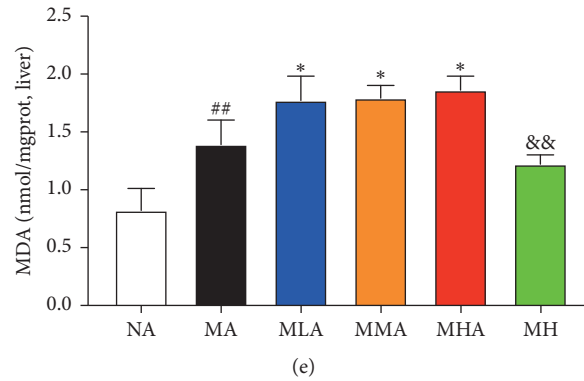


FIGURE 2: Effects of SCU plus antibiotics on CYP2E1-mediated oxidative stress. (a) Immunohistochemistry analysis of CYP2E1. (b) Relative expression of CYP2E1 mRNA in the liver tissues. (c) Western blotting analysis of CYP2E1. GAPDH was used as the loading control. Quantification of the relative protein levels of CYP2E1. (d) Superoxide dismutase (SOD) activity and (e) malondialdehyde (MDA) level. The data and error bars are presented as mean \pm SD ($n = 5$). ## $P < 0.01$ vs. NA group. * $P < 0.05$ vs. MA group. && $P < 0.01$ vs. MHA group.

level had no significant difference among all groups. Histological analysis and TUNEL assay can reflect pathological process and hepatocyte apoptosis level, respectively. The results demonstrated that hepatocyte necrosis, inflammatory cell infiltration, and hepatocyte apoptosis were severe in the SCU plus antibiotics treatment groups relative to the MA group. Taken together, the hepatoprotective effect of SCU was reversed in gut microbiota-dysbiosis mice.

Hepatic CYP2E1 is mainly responsible for the metabolism of CCl_4 to produce highly-reactive trichloromethyl free radicals and plays a vital role in the regulation of CCl_4 -induced lipid peroxidation, oxidative stress, and inflammatory response [13, 14]. CCl_4 -derived free radical can attack hepatocyte membranes, leading to hepatocyte necrosis [15]. The results showed that 60 mg/kg SCU exerted potent inhibitory effect on CYP2E1, which was reversed by antibiotics intervention. CCl_4 -derived free radical can irreversibly oxidize biological macromolecules including DNA, proteins, and lipids, leading ultimately to hepatotoxicity [15]. MDA is the final product of lipid peroxidation and SOD is one of the most important antioxidant enzymes with high endogenous expression in the liver that eliminates toxic free radicals and reactive toxic CCl_4 metabolites [16]. The MDA level and SOD activity can reflect the levels of oxidative stress. In our study, SCU worsened lipid peroxidation and oxidative stress, as evidenced by higher MDA levels and lower SOD activity. Oxidative stress is suggested a trigger of inflammation. In this study, we evaluated the key inflammatory cytokines (IL-6, IL-1 β , and TNF- α mRNA) in the liver tissues and the resulted showed that 60 mg/kg could significantly reduce the mRNA levels of them, showing potent anti-inflammatory capacity. However, the anti-inflammatory activity of SCU was reversed under antibiotics intervention, as proved by higher mRNA levels of IL-6, IL-1 β , and TNF- α . CCl_4 -induced oxidative stress triggers the degradation of I κ B α to increase the DNA-binding affinity of NF- κ B. Then, NF- κ B can be activated for translocation from the cytoplasm to the nucleus to regulate the expression of multiple target genes including IL-6, IL-1 β , and TNF- α to exacerbate hepatic damage [17, 18]. The results showed that 60 mg/kg SCU significantly restored I κ B α

degradation and suppressed NF- κ B activation which was reversed by SCU plus antibiotics. These results suggested that the antioxidant and anti-inflammatory activities of SCU were reversed in gut microbiota-dysbiosis mice.

The gut microbiota can be deemed as an important part of host body that provides additional benefits such as extraction of calories from otherwise indigestible carbohydrates, metabolism of bile acid, and exogenous drugs, among others [19]. Intestinal microflora dysbiosis is an established concept contributing to liver disease. Disruption of gut microbiota can lead to a variety of liver diseases such as nonalcoholic steatohepatitis [20]. Dysbiosis following the toxic liver injury is characterized by an increased prevalence of the phylum Firmicutes, namely, member in the genus *Lactobacillus*. Moreover, there is a significant increase in the number of OUTs in the phylum Actinobacteria in the toxin-treated group [21]. In this study, we demonstrated that experimental dysbiosis induced by antibiotics resulted in a slight increase in liver injury. In the MA group, we found the relative abundance of *Lactobacillus* and Actinobacteria were increased, which was consistent with the previous work [21]. Although the malfunction of gut microbiota occurred under antibiotics intervention, *Lactobacillus* still showed apparent correlation with AST and SOD. *Lactobacillus* has been widely reported to possess beneficial effects to the liver. Shi et al [22] and Chen et al [23] have proved that supplementation of *Lactobacillus* can effectively attenuate CCl_4 -induced liver injury. Saeedi et al. [24] have demonstrated that *Lactobacillus*-derived 5-methoxyindoleacetic acid could activate hepatic Nrf2 to protect against oxidative liver injury. However, the relative abundance of *Lactobacillus* was significantly decreased in the SCU plus antibiotics groups, which might partly account for reversed hepatic effects of SCU. Dysbiosis might result in intestinal inflammation, disruption of the gut barrier, and bacterial translocation [25, 26]. The translocated bacterial products (endotoxin) induce hepatic inflammation and liver injury [27]. However, bacterial products translocation depends on the degree of gut leakiness. Fouts et al. [28] have proved that gut leakiness is lower following toxin-induced liver injury relative to other types of liver damage such as

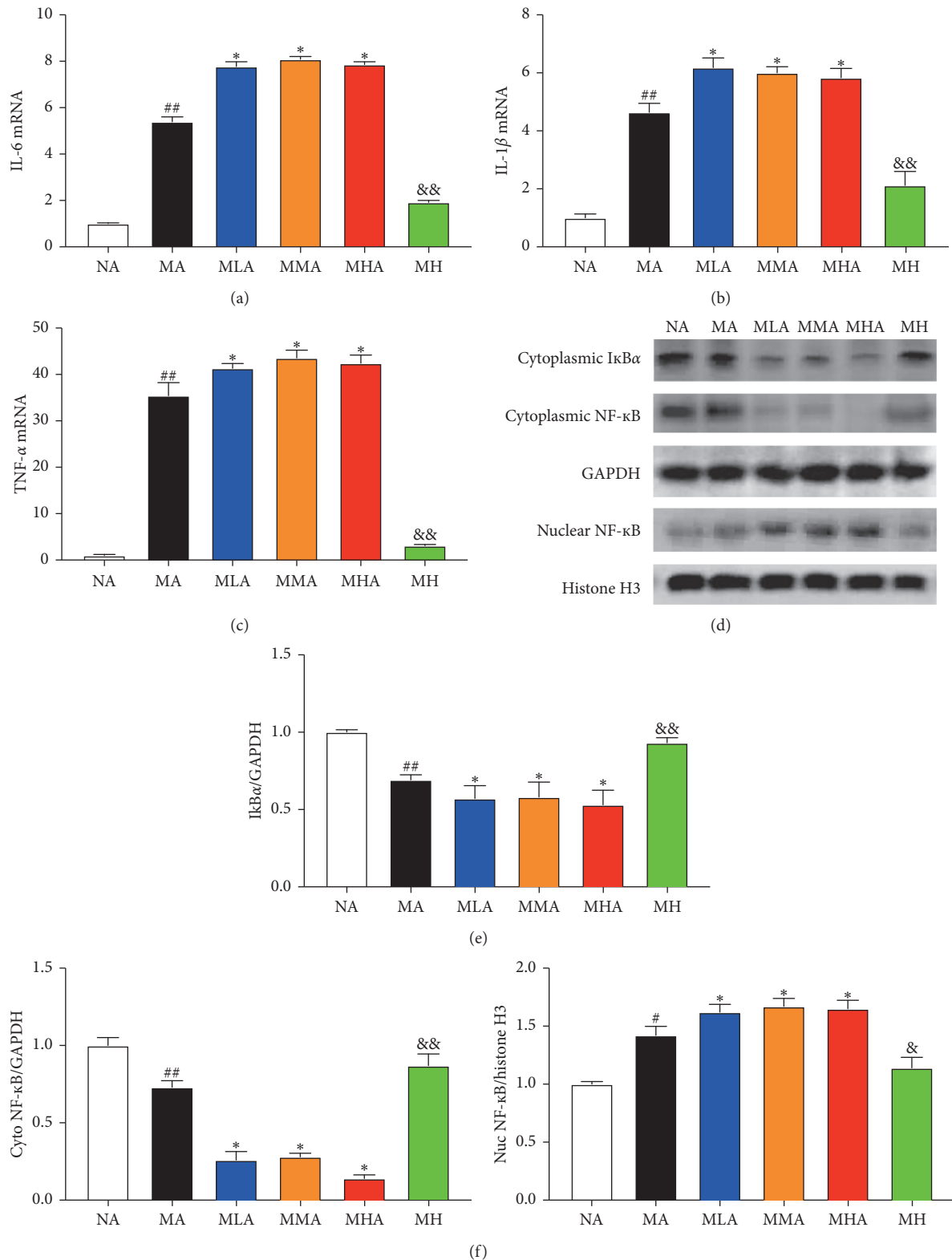
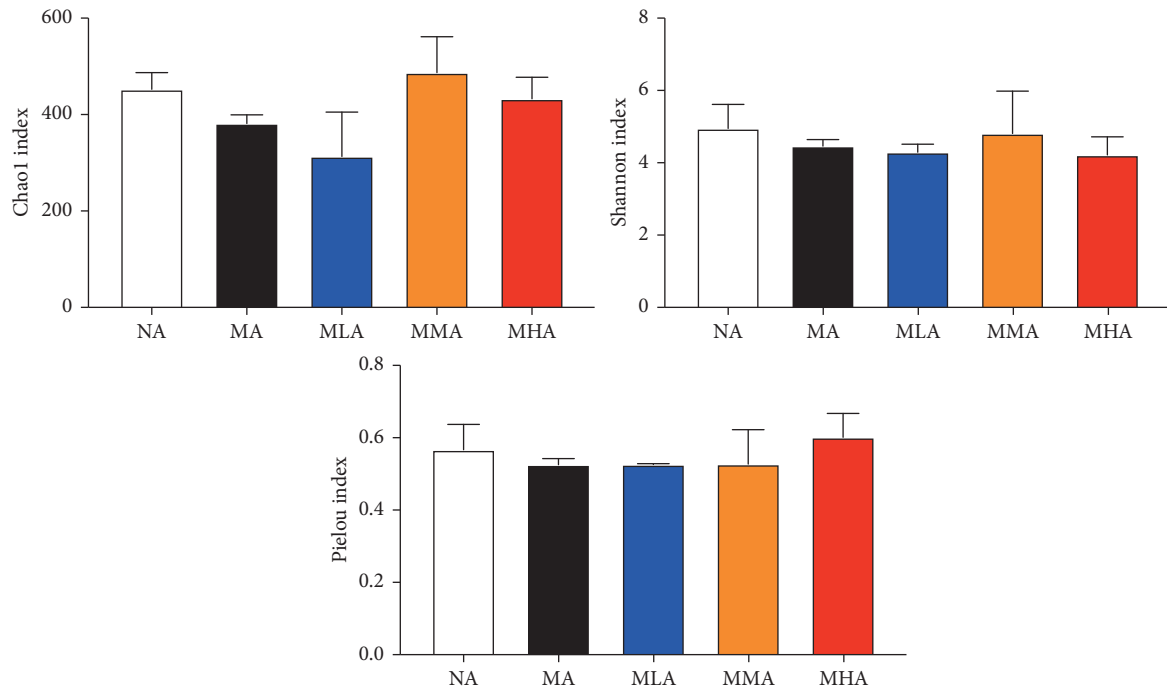
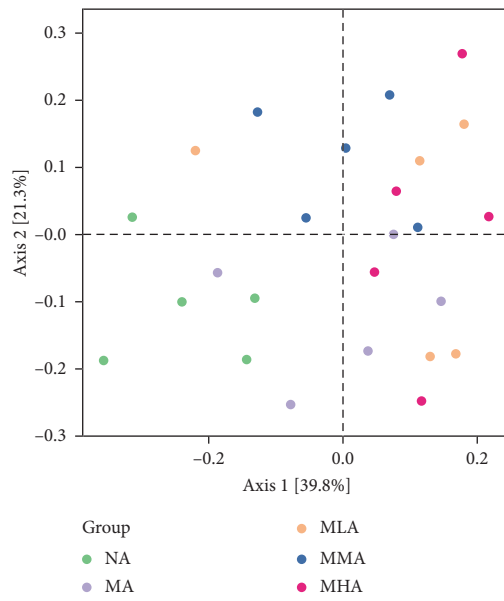


FIGURE 3: Effects of SCU plus antibiotics on I κ B α /NF- κ B pathway-mediated inflammation response. Relative expression of (a) IL-6, (b) IL-1 β , and (c) TNF- α mRNA in the liver tissues. (d) Western blotting analysis of I κ B α and NF- κ B. GAPDH and Histone H3 were used as the loading control. Quantification of the relative protein levels of (e) I κ B α and (f) NF- κ B. The data and error bars are presented as mean \pm SD ($n=5$). # $P < 0.05$; ## $P < 0.01$ vs. NA group. * $P < 0.05$; ** $P < 0.01$ vs. MA group. & $P < 0.05$; && $P < 0.01$ vs. MHA group.



(a)



(b)

FIGURE 4: Continued.

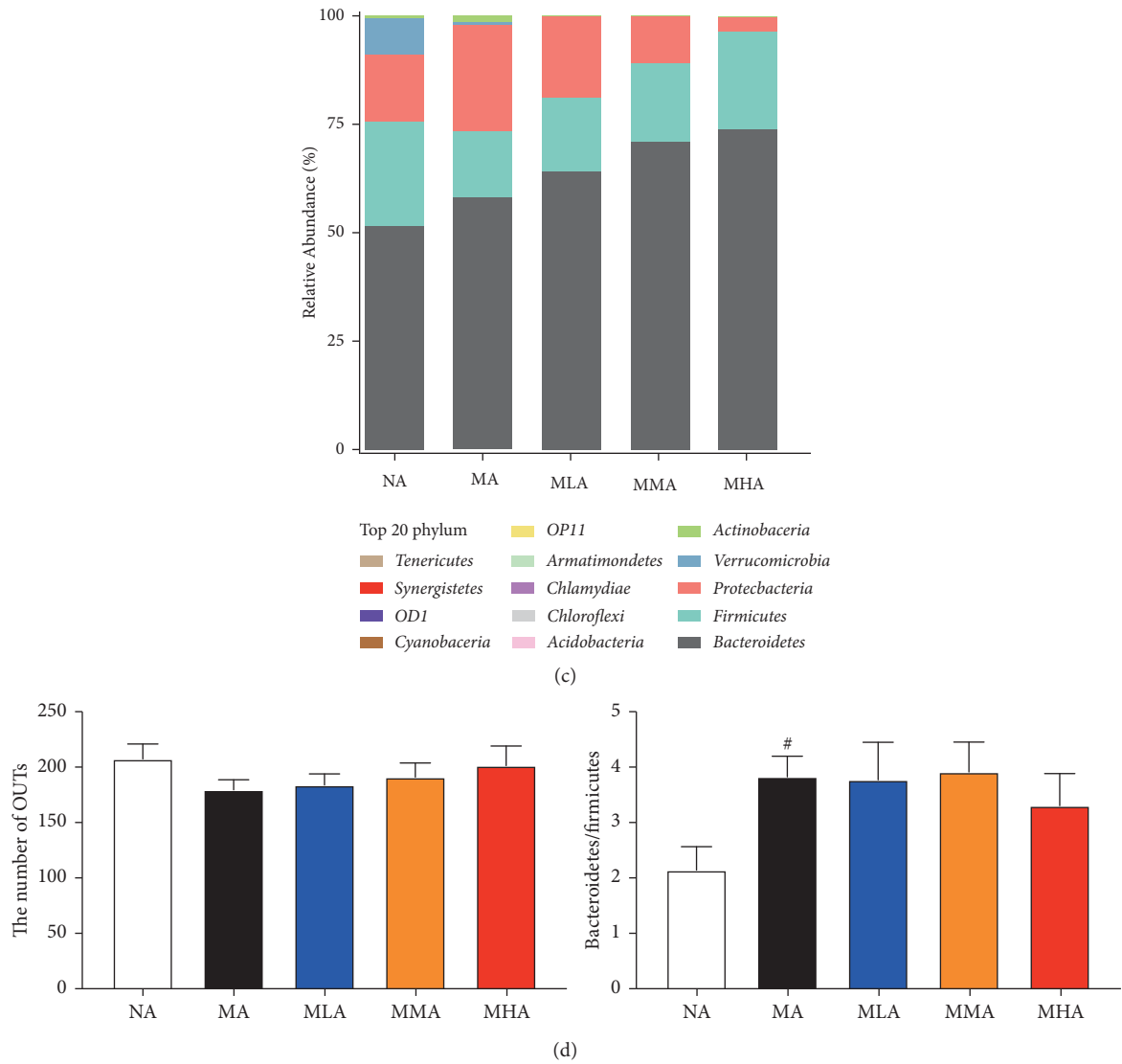


FIGURE 4: Effects of SCU plus antibiotics on gut microbiota. (a) α -Diversity of the gut microbiota. (b) β -Diversity of the gut microbiota. (c) Relative abundance of different phyla in the gut microbiota of mice. (d) The top two gut microbial communities at phylum level. The data and error bars are presented as mean \pm SD ($n = 5$). # $P < 0.05$ vs. NA group.

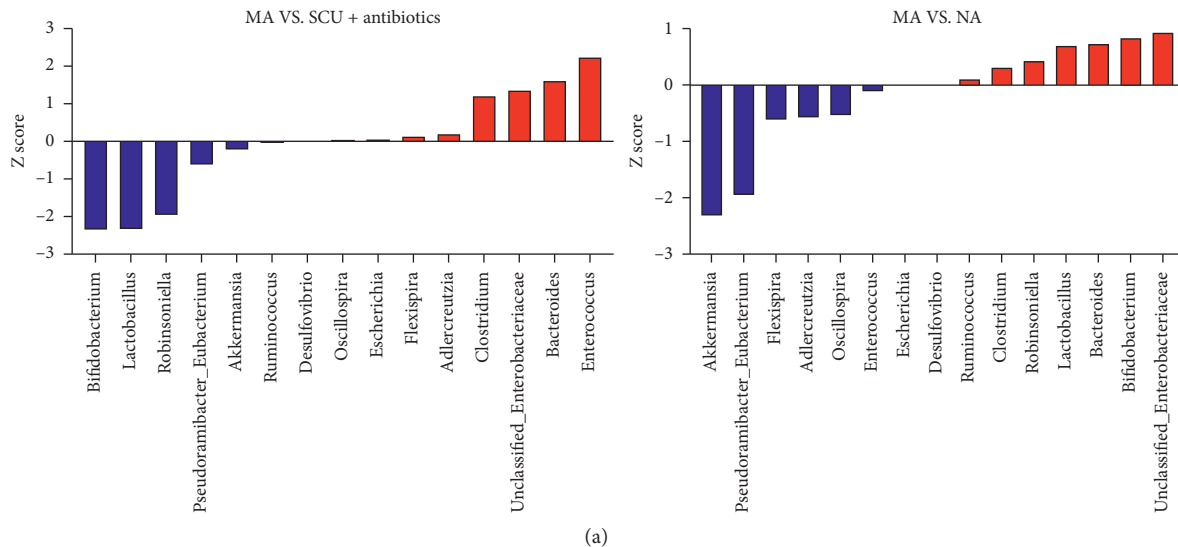


FIGURE 5: Continued.

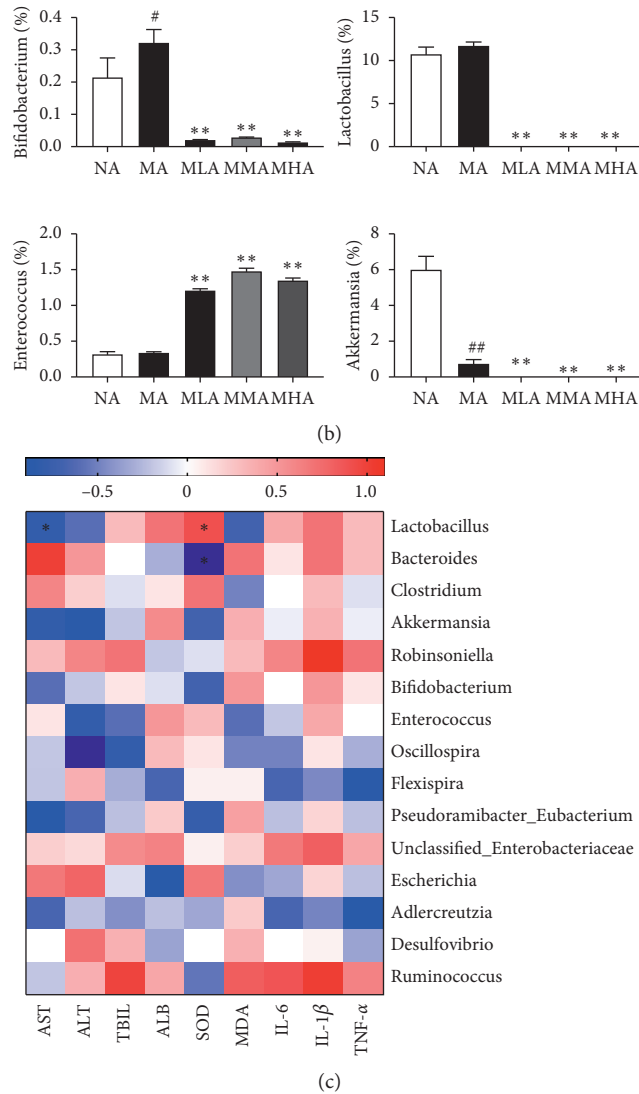


FIGURE 5: Effect of SCU plus antibiotics on key phylotypes of gut microbiota. (a) The genera changes were assessed by Z score. (b) Significant difference was found in four genera. (c) Heatmap of the correlations between gut microbiota and liver injury indicators. *indicates a significant correlation ($P < 0.05$). The data and error bars are presented as mean \pm SD ($n = 5$). # $P < 0.05$; ## $P < 0.01$ vs. NA group. ** $P < 0.01$ vs. MA group.

cholestasis. Thus, intestinal microflora dysbiosis might not contribute as much to the progression of toxic liver injury. The bioavailability of SCU is supposed to be very low and SCU is very likely to be degraded by gut microbes to generate metabolites with more pharmacological activity and higher bioavailability. Shi [29] et al. have reported that the main metabolites of SCU are scutellarein and 6-O-methylscutellarein *in vivo*. Furthermore, 6-O-methylscutellarein showed potent antithrombotic activity, stronger antioxidant activity, and balanced solubility and permeability compared with SCU, which warrants further investigation.

5. Conclusion

Collectively, our studies demonstrated that the hepatoprotective effect of SCU is reversed under antibiotics intervention, which may partly involve the activation of

CYP2E1 and $\text{I}\kappa\text{B}\alpha/\text{NF-}\kappa\text{B}$ pathway and diminishment of *Lactobacillus*.

Abbreviations

- SCU: Scutellarein
- CCl_4 : Carbon tetrachloride
- CMC-Na: Sodium carboxymethyl cellulose
- ALT: Aminotransferase
- AST: Aspartate aminotransferase
- TBIL: Total bilirubin
- ALB: Albumin
- MDA: Malondialdehyde
- SOD: Superoxide dismutase
- IL-1 β : Interleukin-1 β
- IL-6: Interleukin-6
- TNF- α : Tumor necrosis factor- α

H&E: Hematoxylin and eosin
IHC: Immunohistochemistry.

Data Availability

The data used to support the findings of the current study are included in this published article.

Disclosure

The article already exists in the form of preprint (doi: 10.21203/rs.3.rs-60084/v1).

Conflicts of Interest

There are no conflicts of interest in this work.

Authors' Contributions

Zhimin Miao and Yong Lai contributed equally to this work. Z.M. and Y.Z. conceived and designed the research; Z.M., Y.Z., and L.C. performed the experiments; H.L. and J.Z. performed the statistical analysis; Z.M. and Y.Z. wrote the draft and prepared figures. Y.L. reviewed and revised the manuscript.

Acknowledgments

This work was supported by the National Natural Science Foundation of China (Grant no. 81360511) and Scientific Research Fund Project of Yunnan Provincial Department of Education (Grant no. 2019Y0262).

References

- [1] Y. Ding, Z. Song, H. Li et al., "Honokiol ameliorates high-fat-diet-induced obesity of different sexes of mice by modulating the composition of the gut microbiota," *Front Immunol*, vol. 10, p. 2800, 2019.
- [2] M. Zhang, J. Zhu, X. Zhang et al., "Aged citrus peel (chenpi) extract causes dynamic alteration of colonic microbiota in high-fat diet induced obese mice," *Food & Function*, vol. 11, no. 3, pp. 2667–2678, 2020.
- [3] Z. Shi, T. Li, Y. Liu et al., "Hepatoprotective and anti-oxidative effects of total flavonoids from Qu Zhi Qiao (fruit of citrus paradisi cv. Changshanhuoyou) on nonalcoholic steatohepatitis in vivo and in vitro through Nrf2-ARE signaling pathway," *Front Pharmacol*, vol. 11, p. 483, 2020.
- [4] L. Wang and Q. Ma, "Clinical benefits and pharmacology of scutellarin: a comprehensive review," *Pharmacology & Therapeutics*, vol. 190, pp. 105–127, 2018.
- [5] Y. Liu, P. H. Wen, X. X. Zhang et al., "Breviscapine ameliorates CCl4-induced liver injury in mice through inhibiting inflammatory apoptotic response and ROS generation," *International Journal of Molecular Medicine*, vol. 42, no. 2, pp. 755–768, 2018.
- [6] X. Zhang, G. Kuang, J. Wan et al., "Salidroside protects mice against CCl4-induced acute liver injury via down-regulating CYP2E1 expression and inhibiting NLRP3 inflammasome activation," *International Immunopharmacology*, vol. 85, Article ID 106662, 2020.
- [7] B. Yue, J. Ren, Z. Yu et al., "Pinocembrin alleviates ulcerative colitis in mice via regulating gut microbiota, suppressing TLR4/MD2/NF- κ B pathway and promoting intestinal barrier," *Biosci Rep*, vol. 40, no. 7, Article ID BSR20200986, 2020.
- [8] M. Park, J. Choi, and H.-J. Lee, "Flavonoid-rich orange juice intake and altered gut microbiome in young adults with depressive symptom: a randomized controlled study," *Nutrients*, vol. 12, no. 6, p. 1815, 2020.
- [9] Y. Zhong, B. Song, C. Zheng et al., "Flavonoids from mulberry leaves alleviate lipid dysmetabolism in high fat diet-fed mice: involvement of gut microbiota," *Microorganisms*, vol. 8, no. 6, p. 860, 2020.
- [10] H. Xuan, A. Ou, S. Hao, J. Shi, and X. Jin, "Galangin protects against symptoms of dextran sodium sulfate-induced acute colitis by activating autophagy and modulating the gut microbiota," *Nutrients*, vol. 12, no. 2, p. 347, 2020.
- [11] W.-Y. Zhang, X.-F. Hu, N. Wan et al., "Protective effect of the glucagon-like peptide-1 analogue liraglutide on carbon tetrachloride-induced acute liver injury in mice," *Biochemical and Biophysical Research Communications*, vol. 514, no. 2, pp. 386–392, 2019.
- [12] T. A. Woreta and S. A. Alqahtani, "Evaluation of abnormal liver tests," *Medical Clinics of North America*, vol. 98, no. 1, pp. 1–16, 2014.
- [13] A. Elkhoely, "Diallyl sulfide ameliorates carbon tetrachloride-induced hepatotoxicity in rats via suppressing stress-activated MAPK signaling pathways," *Journal of Biochemical and Molecular Toxicology*, vol. 33, no. 6, Article ID e22307, 2019.
- [14] M. Shu, D.-d. Huang, Z.-a. Hung, X.-r. Hu, and S. Zhang, "Inhibition of MAPK and NF- κ B signaling pathways alleviate carbon tetrachloride (CCl4)-induced liver fibrosis in Toll-like receptor 5 (TLR5) deficiency mice," *Biochemical and Biophysical Research Communications*, vol. 471, no. 1, pp. 233–239, 2016.
- [15] A. N. Aralbaeva, A. T. Mamataeva, N. I. Zhaparkulova et al., "A composition of medicinal plants with an enhanced ability to suppress microsomal lipid peroxidation and a protective activity against carbon tetrachloride-induced hepatotoxicity," *Biomedicine & Pharmacotherapy*, vol. 96, pp. 1283–1291, 2017.
- [16] W. Zhang, Z. Dong, X. Chang et al., "Protective effect of the total flavonoids from Apocynum venetum L. on carbon tetrachloride-induced hepatotoxicity in vitro and in vivo," *Journal of Physiology and Biochemistry*, vol. 74, no. 2, pp. 301–312, 2018.
- [17] P. Li, M. Wu, W. Xiong et al., "Saikosaponin-d ameliorates dextran sulfate sodium-induced colitis by suppressing NF- κ B activation and modulating the gut microbiota in mice," *International Immunopharmacology*, vol. 81, p. 106288, 2020.
- [18] X. Man, C. Piao, X. Lin et al., "USP13 functions as a tumor suppressor by blocking the NF- κ B-mediated PTEN down-regulation in human bladder cancer," *Journal of Experimental & Clinical Cancer Research*, vol. 38, no. 1, p. 259, 2019.
- [19] F. Bäckhed, H. Ding, T. Wang et al., "The gut microbiota as an environmental factor that regulates fat storage," *Proceedings of the National Academy of Sciences*, vol. 101, no. 44, pp. 15718–15723, 2004.
- [20] J. Henao-Mejia, E. Elinav, C. Jin et al., "Inflammasome-mediated dysbiosis regulates progression of NAFLD and obesity," *Nature*, vol. 482, no. 7384, pp. 179–185, 2012.
- [21] M. Mazagova, L. Wang, A. T. Anfora et al., "Commensal microbiota is hepatoprotective and prevents liver fibrosis in mice," *The FASEB Journal*, vol. 29, no. 3, pp. 1043–1055, 2015.
- [22] D. Shi, L. Lv, D. Fang et al., "Administration of Lactobacillus salivarius LI01 or Pediococcus pentosaceus LI05 prevents

- CCl₄-induced liver cirrhosis by protecting the intestinal barrier in rats,” *Scientific Reports*, vol. 7, no. 1, p. 6927, 2017.
- [23] L. Chen, D. D. Pan, J. Zhou et al., “Protective effect of selenium-enriched lactobacillus on CCl₄-induced liver injury in mice and its possible mechanisms,” *World Journal of Gastroenterology*, vol. 11, no. 37, pp. 5795–5800, 2005.
- [24] B. J. Saeedi, K. H. Liu, J. A. Owens et al., “Gut-resident Lactobacilli activate hepatic Nrf2 and protect against oxidative liver injury,” *Cell Metabolism*, vol. 31, no. 5, pp. 956–968, 2020.
- [25] A. Abu-Shanab and E. M. M. Quigley, “The role of the gut microbiota in nonalcoholic fatty liver disease,” *Nature Reviews Gastroenterology & Hepatology*, vol. 7, no. 12, pp. 691–701, 2010.
- [26] P. Chen, P. Stärkel, J. R. Turner, S. B. Ho, and B. Schnabl, “Dysbiosis-induced intestinal inflammation activates tumor necrosis factor receptor I and mediates alcoholic liver disease in mice,” *Hepatology*, vol. 61, no. 3, pp. 883–894, 2015.
- [27] B. Schnabl and D. A. Brenner, “Interactions between the intestinal microbiome and liver diseases,” *Gastroenterology*, vol. 146, no. 6, pp. 1513–1524, 2014.
- [28] D. E. Fouts, M. Torralba, K. E. Nelson, D. A. Brenner, and B. Schnabl, “Bacterial translocation and changes in the intestinal microbiome in mouse models of liver disease,” *Journal of Hepatology*, vol. 56, no. 6, pp. 1283–1292, 2012.
- [29] Z.-H. Shi, N.-G. Li, Z.-J. Wang et al., “Synthesis and biological evaluation of methylated scutellarein analogs based on metabolic mechanism of scutellarin in vivo,” *European Journal of Medicinal Chemistry*, vol. 106, pp. 95–105, 2015.