

SUPPORTIVE INFORMATIONS

Table S1 A: TLC profile of all three extract of different plant materials scanned at 254 nm.

Plant		<i>P. emblica</i>			<i>P. nigrum</i>			<i>T. cordifolia</i>			<i>W. somnifera</i>			<i>A. indica</i>			<i>C. longa</i>			<i>O. sanctum</i>			<i>A. millefolium</i>		
Metabolites	Extract	W E	E E	HE E	W E	E E	HE E	W E	E E	HE E	W E	E E	HE E	W E	E E	HE E	W E	E E	HE E	W E	E E	HE E	W E	E E	HE E
	Rf																								
M1	0.02	-	567.1	813.1	-	459.5	-	394.2	-	1555	-	-	-	239.5	-	-	-	-	-	-	785.1	-	-	-	-
M2	0.04	-	-	-	159	-	-	-	348	-	286	225	-	539	249	-	110	-	-	965	-	831	-	-	-
M3	0.05	-	1862	-	-	-	203.8	1085	1152	-	-	-	-	-	-	-	-	-	-	-	-	-	-	-	-
M4	0.08	1277	1491	-	-	-	-	-	362	-	-	-	-	-	-	-	-	-	-	-	-	-	-	-	-
M5	0.1	-	336	-	276.6	-	-	-	-	-	-	-	-	-	-	160.6	-	-	-	1943	2307	-	-	533.3	-
M6	0.11	-	-	-	-	-	-	-	-	183	-	-	-	481	-	178	-	-	-	-	-	735	-	-	-
M7	0.13	-	-	-	-	-	-	-	-	-	-	-	-	-	-	-	-	-	-	-	177	-	-	-	-
M8	0.16	-	-	-	-	-	264	-	-	376	-	-	-	-	-	-	-	-	-	-	-	157	-	-	-
M9	0.19	-	1935	-	-	-	-	-	-	-	-	-	-	402.8	-	-	-	-	-	322.7	392.3	-	-	-	-

M34	M33	M32	M31	M30	M29	M28	M27	M26	M25	M24	M23
0.56	0.55	0.54	0.53	0.52	0.51	0.5	0.49	0.48	0.47	0.44	0.43
-	-	-	-	-	-	-	-	20908	-	-	-
-	-	-	-	-	-	-	-	15579	-	-	-
-	-	-	400.1	-	-	-	-	4043.5	-	-	-
-	-	-	-	-	-	-	1068	-	-	-	-
-	-	-	-	-	8562	-	-	-	-	-	-
12617	-	-	-	-	-	-	-	-	-	7602	-
-	-	2773	-	-	-	-	-	-	-	2155	-
-	-	-	-	-	-	-	-	-	-	-	-
8449.2	-	4680	-	-	-	-	-	-	11255	-	-
-	-	-	-	-	1126	-	-	-	-	-	-
-	-	-	2564	-	-	-	964.2	-	-	1726	-
-	-	-	1128	-	-	910.7	-	-	1283.8	-	-
-	-	-	1700	-	-	-	-	-	-	-	-
-	-	-	-	-	-	-	-	-	-	1742	-
-	-	-	-	-	-	-	4711	-	-	-	-
-	38198	-	-	-	-	-	-	-	-	-	-
44679	-	-	-	-	-	-	-	-	-	-	-
-	-	-	-	8449	-	--	-	-	12431	-	-
-	-	-	-	-	-	-	-	-	-	-	5818
-	-	-	-	-	-	-	-	-	-	-	8056
6897.6	-	-	-	-	-	4186	-	-	-	-	1258
-	-	-	-	-	640.6	-	-	-	-	-	-
-	-	-	-	-	-	-	-	2385	-	-	-
-	-	-	-	-	-	6924	-	-	-	1908	-

M58	M57	M56	M55	M54	M53	M52	M51	M50	M49	M48	M47
0.84	0.83	0.81	0.79	0.77	0.76	0.75	0.74	0.73	0.72	0.71	0.7
-	-	-	-	-	-	-	7161	-	-	-	-
-	-	-	-	-	-	-	-	3092	-	-	3923.8
-	-	-	-	-	-	-	-	-	-	4284	-
-	-	-	-	-	7423.3	-	-	-	-	-	-
-	-	-	-	29910	-	-	-	-	-	-	49632
-	7990.3	-	-	-	-	-	-	-	7274	-	-
-	-	-	-	-	-	-	-	2024	-	-	-
9910.7	-	-	-	-	-	-	-	-	-	-	-
-	6312	-	-	7144	-	-	-	-	-	-	-
6163.6	-	-	-	-	-	-	-	2572	-	-	-
9455	-	-	-	-	-	-	2899	-	-	-	3561.1
-	7949.6	-	-	-	-	2047	-	-	-	-	4798.1
-	-	-	-	-	-	-	-	2261	-	-	-
10810	-	-	-	-	-	-	-	-	-	-	-
-	8334.9	-	-	-	-	2410	-	-	-	-	-
-	34312	-	7622	-	-	10119	-	-	-	-	-
35377	-	-	8840	-	11314	-	-	-	-	-	-
25719	-	-	-	6629	-	-	-	-	5835	-	-
-	-	8048	-	-	-	-	7502	-	-	-	7028.9
-	-	9462	5945	-	-	-	7754	-	-	-	9090.5
-	8489.1	-	-	-	-	3636	-	-	-	4314	-
-	-	-	-	-	19105	-	-	-	-	-	-
-	-	-	-	-	-	-	-	-	-	6200	-
-	-	-	-	4786	-	-	-	-	-	5489	-

Total Number of Metabolites	M63	M62	M61	M60	M59
	0.96	0.88	0.87	0.86	0.85
9	-	-	16259	-	-
13	-	-	19664	-	-
12	240	-	21336	-	-
12	802	-	5176.7	-	6273
10	-	-	6547.1	-	7852
11	-	9589.5	-	-	-
11	-	-	9136.8	-	-
11	-	-	4819.6	-	-
14	-	9601.5	-	-	-
7	-	-	3205.9	-	-
11	-	-	-	4771	-
11	-	-	-	8717	-
11	-	-	9198.3	-	-
9	-	-	-	4243	-
11	-	-	-	8884	-
8	-	-	-	-	-
6	-	-	-	-	-
8	-	-	-	-	-
11	-	-	13405	-	-
12	-	-	15044	-	-
13	-	10495	-	-	-
3	-	24722	-	-	-
8	-	-	22347	-	-
8	-	26524	-	-	-

C22	C21	C20	C19	C18	C17	C16	C15	C14	C13	C12	C11	C10
0.48	0.47	0.46	0.43	0.42	0.41	0.39	0.37	0.36	0.34	0.29	0.27	0.24
6378	-	-	-	-	-	11094	-	-	-	-	500	-
6773	-	-	-	-	-	17491	-	-	-	-	-	-
770.3	-	-	-	1024	-	-	-	3448	-	-	-	-
-	-	-	-	-	-	-	-	-	-	-	-	-
-	-	1391	-	2182	-	-	-	-	-	-	-	-
-	-	2665	-	-	-	-	-	-	-	-	-	-
-	-	-	-	-	-	-	-	-	-	-	-	-
-	-	-	-	-	-	-	-	-	-	-	-	-
-	-	-	-	-	-	-	-	-	-	-	-	-
-	-	-	-	-	-	-	-	-	-	-	-	-
-	-	-	-	-	-	-	-	-	-	-	-	-
859.6	-	-	-	-	947	-	2051	-	-	-	-	805
-	-	-	-	-	-	-	-	-	-	-	-	-
-	-	-	-	-	-	-	-	-	-	-	-	-
-	-	667.1	-	-	-	-	-	-	-	-	-	-
-	-	-	-	-	-	-	-	-	-	-	-	-
-	-	-	-	-	-	-	-	-	-	-	-	-
-	17034	-	-	-	-	-	-	-	-	-	-	-
-	-	-	6774	-	-	-	-	-	-	-	-	-
-	-	-	7963	-	-	-	815.7	-	-	-	-	-
-	-	-	496.6	-	-	-	-	-	-	-	3556	-
-	-	-	-	-	-	-	-	-	-	-	-	-
2210	-	-	-	-	-	650.6	-	-	-	-	-	-
-	-	-	-	-	-	-	-	-	501	511	-	-

C34	C33	C32	C31	C30	C29	C28	C27	C26	C25	C24	C23
0.61	0.6	0.59	0.58	0.56	0.55	0.54	0.53	0.52	0.51	0.5	0.49
-	-	4362	-	-	-	-	-	-	-	-	-
-	-	2022.3	-	-	-	-	-	-	-	-	-
-	-	-	-	-	-	-	-	-	-	-	-
-	-	985.7	-	-	-	-	-	-	-	-	-
-	-	-	5903	-	-	-	-	-	2766	-	-
-	-	-	-	17335	-	-	-	-	-	1229	-
-	-	-	-	-	462	-	-	-	-	-	-
-	-	-	2300	-	-	-	-	-	-	-	-
-	-	-	-	-	-	5460	-	-	-	-	2647
-	-	-	629.4	-	-	-	-	-	-	-	-
-	1594	-	-	-	-	-	-	-	-	-	-
-	-	-	452.3	-	-	-	-	-	-	371.3	-
-	-	-	2796	-	-	-	-	-	-	-	-
-	-	-	2214	-	-	-	-	-	-	-	-
-	-	-	-	1079.8	-	-	673	-	-	-	1008
90822	-	-	-	-	-	-	-	-	-	-	-
-	-	-	-	-	-	-	-	-	-	-	-
24783	-	-	-	-	-	-	-	12570	-	-	-
-	-	12348	-	-	-	-	-	-	-	-	-
-	-	14800	-	-	-	-	-	-	-	-	-
1062.6	-	-	-	4843.6	-	-	-	-	-	3782	-
-	-	-	-	-	-	-	-	-	-	-	-
-	-	-	-	-	-	-	-	-	-	-	-
-	-	-	4055	-	-	-	-	-	9963	-	-

C45	C44	C43	C42	C41	C40	C39	C38	C37	C36	C35
0.75	0.74	0.73	0.71	0.7	0.69	0.68	0.67	0.66	0.64	0.62
-	-	-	-	2518.3	-	-	-	-	1706.7	-
-	-	3129	-	1902	-	-	-	-	-	-
-	-	-	1798	-	-	-	900	-	-	982.3
-	-	-	-	-	-	15228	-	-	-	2511.2
-	-	-	-	47531	-	-	-	-	18828	-
-	-	-	-	-	-	-	11323	-	-	34922
-	-	-	-	2002.9	-	-	-	-	-	-
-	-	-	-	-	8567	-	-	-	1934.3	-
-	-	769.8	-	-	1166	-	-	-	-	2432.6
-	-	-	-	2546.3	-	-	-	-	-	-
-	1983	-	-	967	-	-	-	1233	-	-
-	-	-	-	1556.5	-	-	-	965.5	-	861.1
-	-	-	-	2047.2	-	-	-	-	1974.9	-
1446.1	-	-	2198	-	-	-	-	-	1323.9	-
-	-	-	-	-	1483	-	-	-	1300	-
-	-	-	-	-	-	-	66994	-	-	-
12712	-	-	-	-	-	53910	-	-	-	96243
-	-	-	-	1182.6	-	-	-	-	-	-
-	-	-	6747	-	-	-	5965.8	-	12531	-
-	5172	-	-	-	-	-	-	-	23174	-
-	-	-	-	1587.3	-	-	1474.7	-	-	-
-	-	-	-	-	-	-	-	-	-	-
-	-	-	5936	-	-	-	-	6526	-	14997
-	-	-	2657	-	-	-	2769.5	-	-	-

Table S2: Correlation matrix (Pearson n) of variables.

Variables	<i>(P. emblica-WE)</i>	<i>(P. emblica-EE)</i>	<i>(P. emblica-HEE)</i>	<i>(P. nigrum-WE)</i>	<i>(P. nigrum-EE)</i>	<i>(P. nigrum-HEE)</i>	<i>(T. cordifolia-WE)</i>	<i>(T. cordifolia-EE)</i>	<i>(T. cordifolia-HEE)</i>	<i>(W. somnifera-WE)</i>	<i>(W. somnifera-EE)</i>	<i>(W. somnifera-HEE)</i>	<i>(A. indica-WE)</i>	<i>(A. indica-EE)</i>	<i>(A. indica-HEE)</i>	<i>(C. longa-WE)</i>	<i>(C. longa-EE)</i>	<i>(C. longa-HEE)</i>	<i>(O. sanctum-WE)</i>	<i>(O. sanctum-EE)</i>	<i>(O. sanctum-HEE)</i>	<i>(A. millefolium-WE)</i>	<i>(A. millefolium-EE)</i>	<i>(A. millefolium-HEE)</i>
<i>P. emblica-WE</i>	1	0.843	0.256	0.061	0.059	-0.08	0.354	0.081	-0.07	0.18	-0.03	-0.07	0.304	-0.04	-0.06	-0.07	-0.07	-0.08	0.284	0.263	-0.09	-0.04	0.36	-0.07
<i>P. emblica-EE</i>		1	0.238	0.059	0.071	-0.08	0.394	0.052	-0.11	0.147	-0.05	-0.04	0.258	-0.08	-0.08	-0.06	-0.07	-0.08	0.166	0.152	-0.1	-0.05	0.362	-0.07
<i>P. emblica-HEE</i>			1	0.054	-0.02	0.009	0.33	0.052	-0.07	0.126	-0.04	-0.06	0.232	-0.06	-0.07	-0.02	-0.01	-0.06	0.102	0.076	-0.05	-0.04	0.346	-0.03
<i>P. nigrum-WE</i>				1	-0.02	0.089	0.147	-0.02	-0.06	0.025	-0.07	-0.03	0.073	0.06	-0.06	-0.06	0.354	-0.08	0.079	0.043	-0.09	0.145	0.196	-0.06
<i>P. nigrum-EE</i>					1	-0.07	0.107	0.115	0.027	0.26	0.139	0.256	0.303	0.103	-0.02	-0.06	-0.06	-0	0.249	0.286	-0.04	-0.04	-0.01	0.052
<i>P. nigrum-HEE</i>						1	-0.04	-0.07	0.343	-0.03	-0.05	0.135	-0.05	-0.05	0.03	0.162	0.67	-0.02	-0.07	-0.09	0.261	0.091	0.534	0.126
<i>T. cordifolia-WE</i>							1	0.131	-0.09	0.3	-0.01	-0.04	0.438	-0.04	-0.02	0.107	-0.06	-0.05	0.257	0.183	-0.07	-0.04	0.45	-0.05
<i>T. cordifolia-EE</i>								1	-0.06	0.555	0.32	0.052	0.5	0.622	0.184	-0.06	0.066	0.211	0.144	0.187	-0.1	-0.01	0.081	0.05
<i>T. cordifolia-HEE</i>									1	-0.09	-0.08	0.171	-0.09	-0.07	0.089	0.085	0.251	0.125	-0.14	-0.1	0.396	0.291	0.1	0.365

<i>W. somnifera</i> -WE											1	0.489	0.009	0.517	0.647	-0.03	-0.06	0.138	0.39	0.167	0.148	-0.06	-0.04	0.182	-0.01
<i>W. somnifera</i> -EE												1	0.327	-0.05	0.613	0.262	-0.07	0.122	0.357	-0.01	0.061	-0.1	0	-0.06	-0.06
<i>W. somnifera</i> -HEE													1	0.099	0.249	0.676	0.101	0.01	-0.04	-0.03	0.018	0.238	-0.01	0.026	0.007
<i>A. indica</i> -WE														1	0.381	0.007	-0.06	-0.06	-0.05	0.349	0.339	-0.08	-0.05	0.319	0.113
<i>A. indica</i> -EE															1	0.181	-0.06	0.14	0.344	0.091	0.112	-0.09	-0.01	-0.05	0.082
<i>A. indica</i> -HEE																1	0.086	-0.07	-0.04	-0	0.052	0.204	-0.01	-0.08	-0.07
<i>C. longa</i> -WE																	1	0.082	0.355	0	-0.07	0.135	-0.04	0.043	0.025
<i>C. longa</i> -EE																		1	0.133	-0.08	-0.08	0.043	0.008	0.45	-0.02
<i>C. longa</i> -HEE																			1	-0.11	-0.09	-0.07	-0.03	-0.04	-0.03
<i>O. sanctum</i> -WE																				1	0.86	-0.09	-0.06	0.178	-0.06
<i>O. sanctum</i> -EE																					1	-0.11	-0.01	0.124	-0.09
<i>O. sanctum</i> -HEE																						1	0.367	-0.05	0.501

[illegible]

Table S3: Eigenvalues of variables from principle component analysis (PCA).

	F1	F2	F3	F4	F5	F6	F7	F8	F9	F10	F11	F12	F13	F14	F15	F16	F17	F18	F19	F20	F21	F22	F23	F24
Eigenvalue	3.9	2.96	2.63	2.04	1.71	1.52	1.3	1.08	1.01	0.92	0.83	0.66	0.59	0.55	0.43	0.37	0.32	0.24	0.21	0.19	0.16	0.14	0.13	0.1
Variability (%)	16.24	12.32	10.98	8.491	7.114	6.342	5.431	4.502	4.222	3.848	3.457	2.734	2.477	2.287	1.777	1.554	1.35	0.989	0.886	0.795	0.685	0.563	0.527	0.429
Cumulative %	16.24	28.57	39.54	48.03	55.15	61.49	66.92	71.42	75.64	79.49	82.95	85.68	88.16	90.45	92.22	93.78	95.13	96.12	97	97.8	98.48	99.05	99.57	100

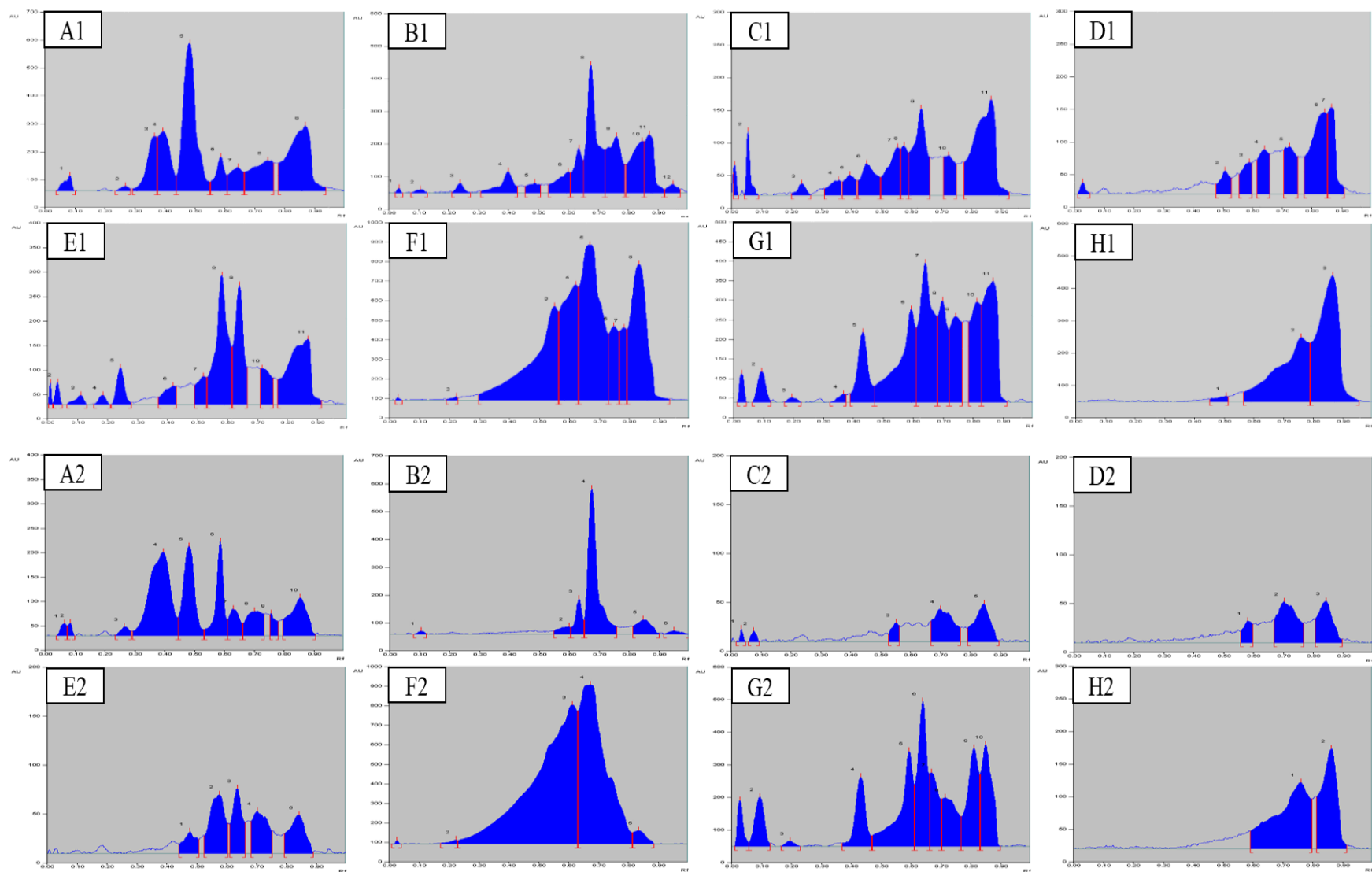


Figure S1: Developed thin layer chromatogram of Water Extracts (WE) of *P. emblica* (A1), *P. nigrum* (B1), *T. cordifolia* (C1), *W. somnifera* (D1), *A. indica* (E1), *C. longa* (F1), *O. sanctum* (G1), *A. millefolium* (H1) at 254 nm and *P. emblica* (A2), *P. nigrum* (B2), *T. cordifolia* (C2), *W. somnifera* (D2), *A. indica* (E2), *C. longa* (F2), *O. sanctum* (G2), *A. millefolium* (H2) at 366 nm.

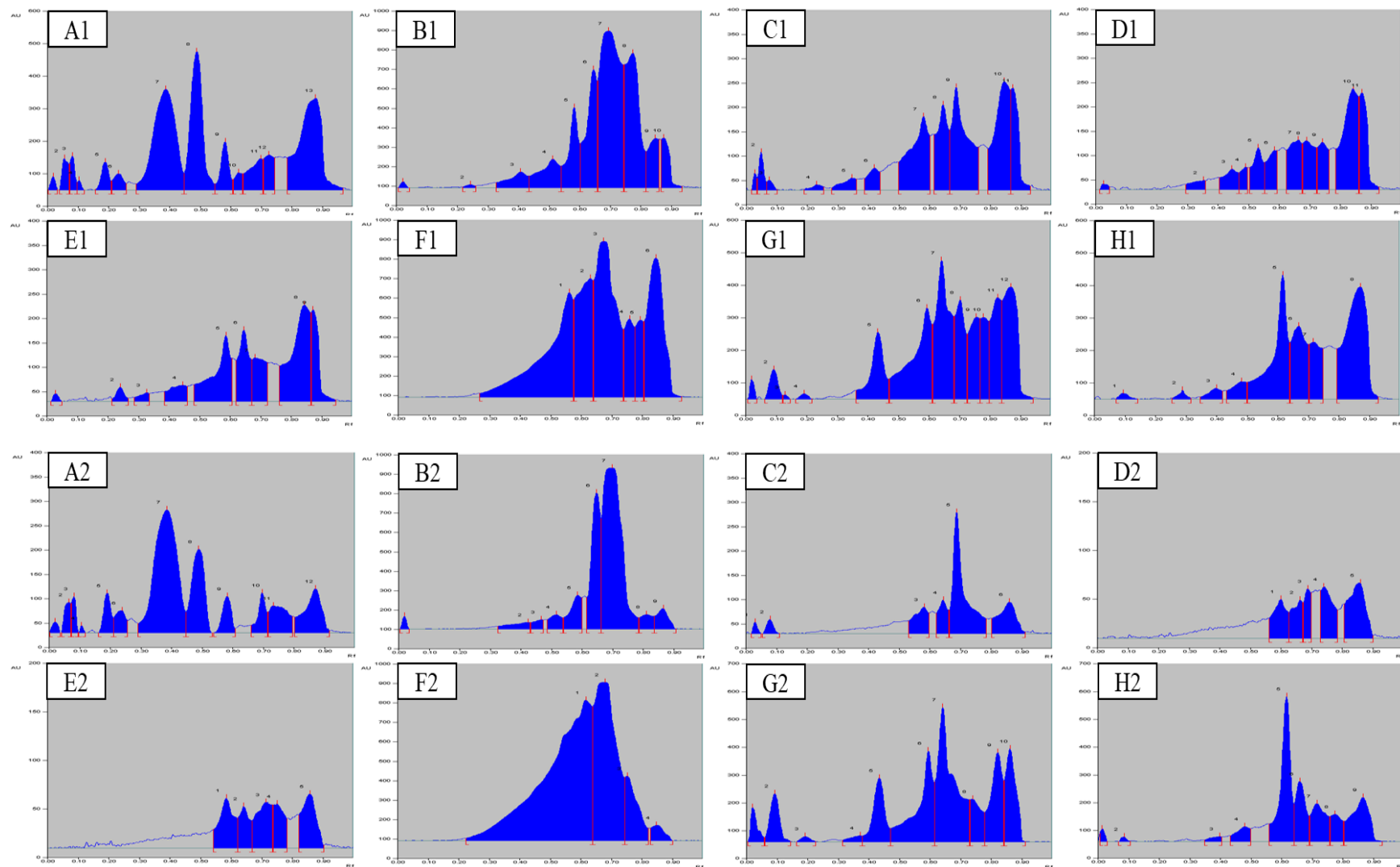


Figure S2: Developed thin layer chromatogram of Ethanolic Extracts (EE) of *P. emblica* (A1), *P. nigrum* (B1), *T. cordifolia* (C1), *W. somnifera* (D1), *A. indica* (E1), *C. longa* (F1), *O. sanctum* (G1), *A. millefolium* (H1) at 254 nm and *P. emblica* (A2), *P. nigrum* (B2), *T. cordifolia* (C2), *W. somnifera* (D2), *A. indica* (E2), *C. longa* (F2), *O. sanctum* (G2), *A. millefolium* (H2) at 366 nm.

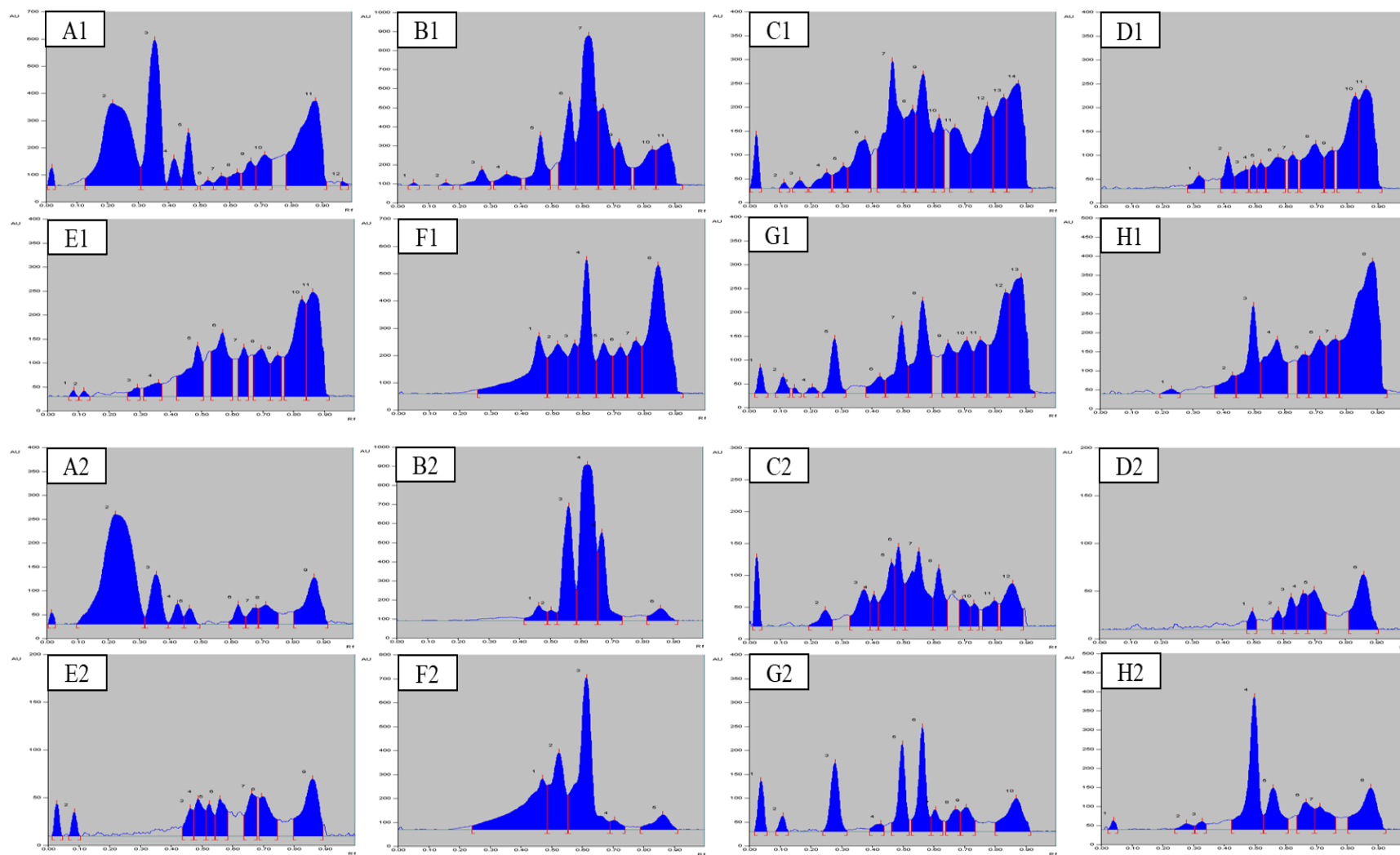


Figure S3: Developed thin layer chromatogram of Hydroethanolic Extracts (HEE) of *P. emblica* (A1), *P. nigrum* (B1), *T. cordifolia* (C1), *W. somnifera* (D1), *A. indica* (E1), *C. longa* (F1), *O. sanctum* (G1), *A. millefolium* (H1) at 254 nm and *P. emblica* (A2), *P. nigrum* (B2), *T. cordifolia* (C2), *W. somnifera* (D2), *A. indica* (E2), *C. longa* (F2), *O. sanctum* (G2), *A. millefolium* (H2) at 366 nm.