

SUPPLEMENTAL MATERIAL

Title: The Efficacy of Chinese Herbal Medicine in Animal Models of Polycystic Ovary Syndrome: A Systematic Review and Meta-Analysis

Authors: Jiangcheng Zhang, Xiyan Xin, Haolin Zhang, Yutian Zhu, Yang Ye, Dong Li

Affiliation: Department of Traditional Chinese Medicine, Peking University Third Hospital, 38 Xueyuan Road, Beijing 100191, China

Supplementary File 1. Search strategy

1. Search strategy used in PubMed database.

#1. rat[Title/Abstract] OR rats[Title/Abstract] OR mouse[Title/Abstract] OR mice[Title/Abstract] OR animal[Title/Abstract] OR animals[Title/Abstract] Items found: 3410081

#2. polycystic ovarian syndrome[Title/Abstract] OR polycystic ovary syndrome[Title/Abstract] OR polycystic ovary[Title/Abstract] OR pcos[Title/Abstract] Items found: 18495

#3. TCM[Title/Abstract] OR herbal medicine[Title/Abstract] OR herb[Title/Abstract] OR formula[Title/Abstract] OR decoction[Title/Abstract] OR chinese[Title/Abstract] OR pill[Title/Abstract] OR tang[Title/Abstract] OR granule[Title/Abstract] Items found: 420728

#4. #1 AND #2 AND #3 Items found: 66

2. Search strategy used in Web of Science database

#1. TS=(polycystic ovarian syndrome OR polycystic ovary syndrome OR polycystic ovary OR pcos) Items found: 39588

#2. TS=(rat OR rats OR mouse OR mice OR animal OR animals) Items found: 23088465

#3. TS=(TCM OR herbal medicine OR herb OR formula OR decoction OR chinese OR pill OR tang OR granule) Items found: 3337417

#4. #1 AND #2 AND #3 Items found: 1069

3. Search strategy used in Scopus

#1. TITLE-ABS-KEY (rat OR rats OR mouse OR mice OR animal OR animals) Items found: 8304654

#2. TITLE-ABS-KEY (polycystic AND ovarian AND syndrome OR polycystic AND ovary AND syndrome OR polycystic AND ovary OR pcos) Items found: 11507

#3. TITLE-ABS-KEY (tcm OR herbal AND medicine OR herb OR formula OR decoction OR chinese OR pill OR tang OR granule) Items found: 106434

#4. #1 AND #2 AND #3 Items found: 43

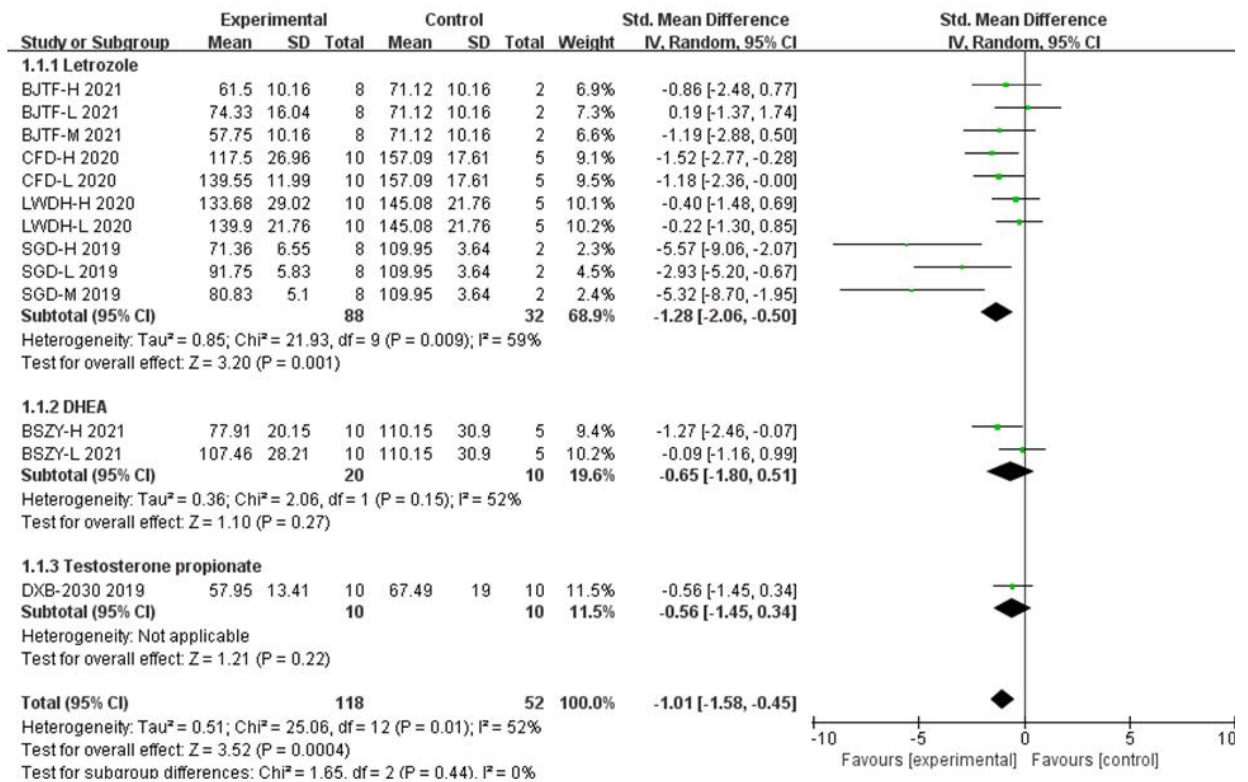
Supplementary Table 1. Study quality score report

Author	Year	(1)	(2)	(3)	(4)	(5)	(6)	(7)	(8)	(9)	(10)	Aggregate quality score
Pan	2021	1	1	0	1	0	1	1	1	1	1	8
Jiang	2021	1	0	1	1	0	1	1	0	1	1	7
Chang	2021	1	1	1	0	0	1	1	0	1	1	7
Xu	2021	1	1	0	0	0	1	1	0	1	1	6
Liu	2021	1	1	1	0	0	1	0	0	1	1	6
Wang	2020	1	1	1	1	0	1	1	0	1	1	8
Xu	2021	1	1	0	1	0	0	1	1	1	1	7
Yi	2021	1	1	1	0	0	1	0	1	1	1	7
Zhu	2020	1	0	1	0	0	1	0	1	1	1	6
Lian	2020	1	1	1	1	0	1	0	0	1	1	7
Qiu	2020	1	1	0	0	0	1	1	1	1	1	7
Azeemuddin	2019	1	1	0	0	0	1	1	1	1	1	7
Shao	2019	1	1	1	1	0	1	1	0	1	1	8
Zhao	2017	1	1	1	0	0	1	0	0	1	1	6
Wang	2016	1	0	1	1	0	1	0	1	0	0	5

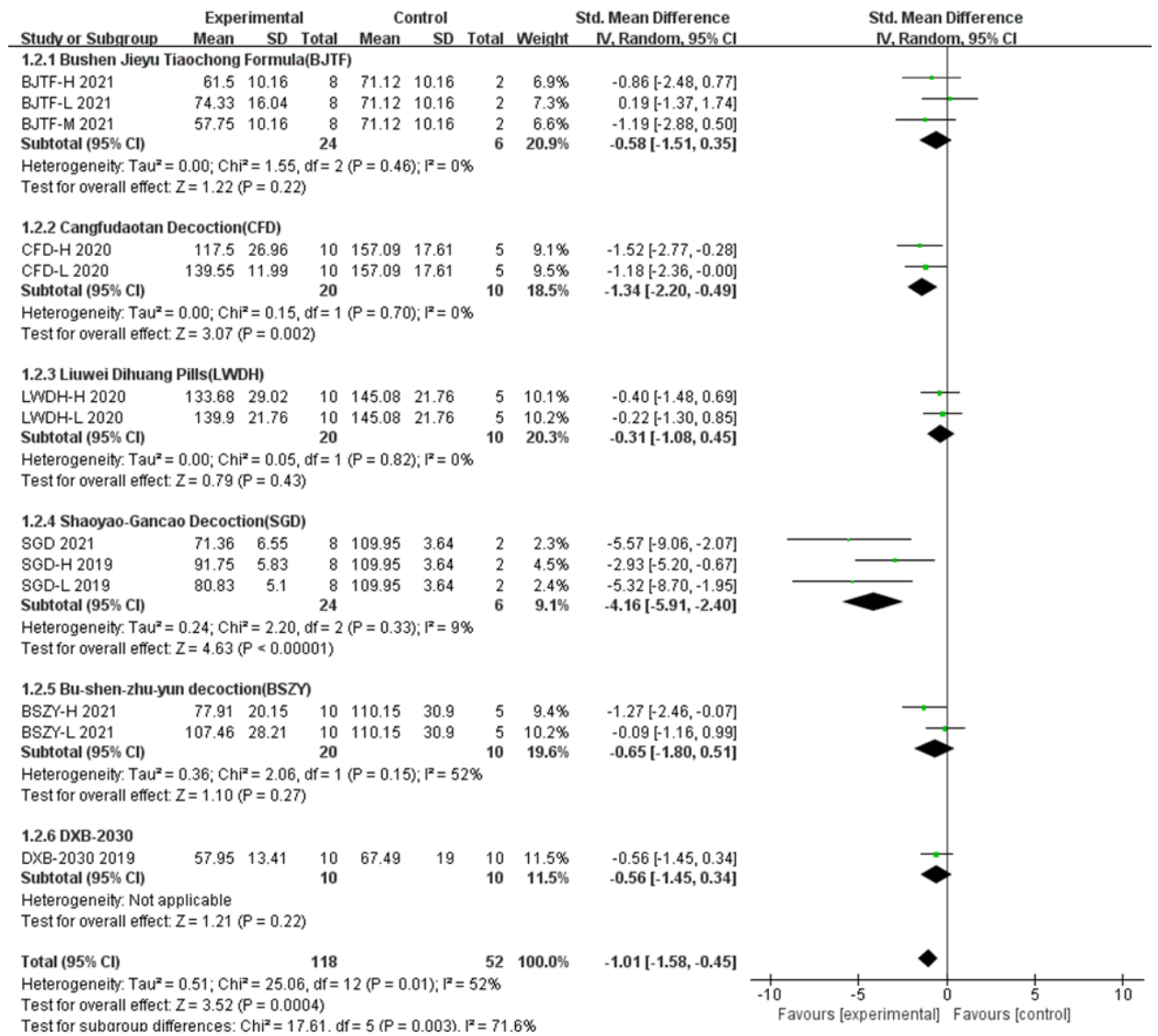
- (1) Publication in a peer-reviewed journal
- (2) Control of temperature
- (3) Random allocation to groups
- (4) Assessment of PCOS model establishment
- (5) Blinded assessment of outcome
- (6) Accurate drug production institutions
- (7) Detection of estrous cycles
- (8) The use of co-morbid animals
- (9) Compliance with animal welfare regulations
- (10) Statement of potential conflicts of interest

Supplementary Fig. 1 Forest plot of the efficacy of CHM on ovarian mass

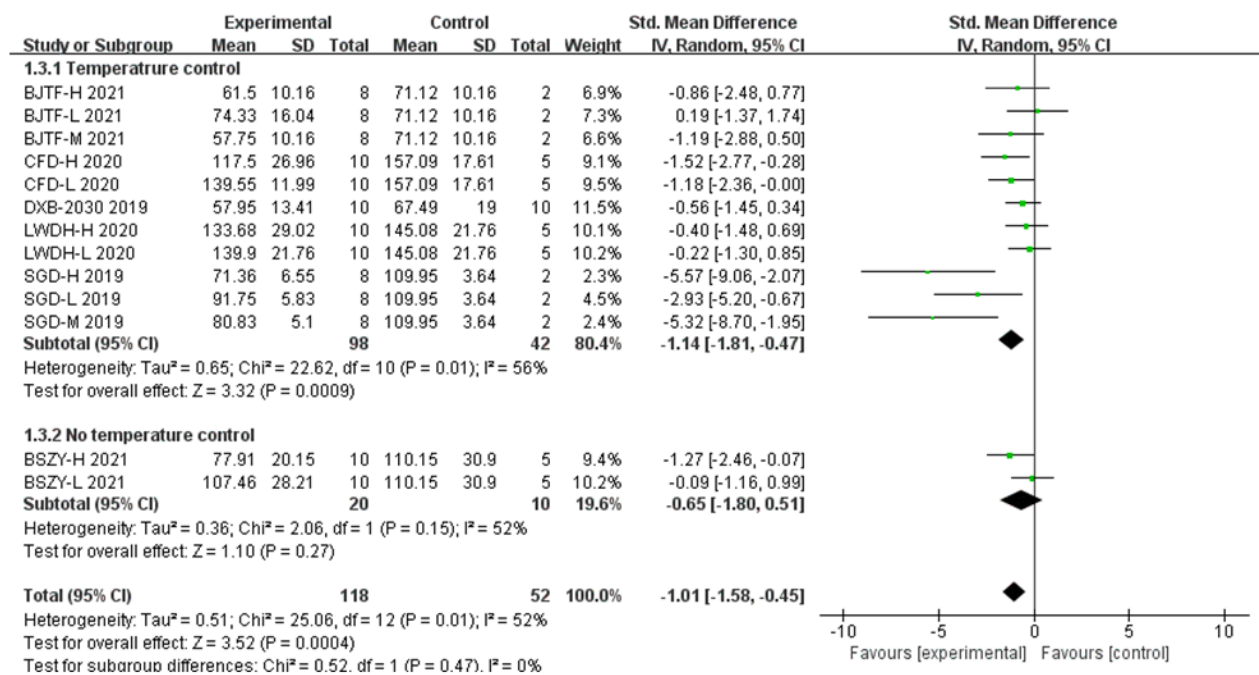
A



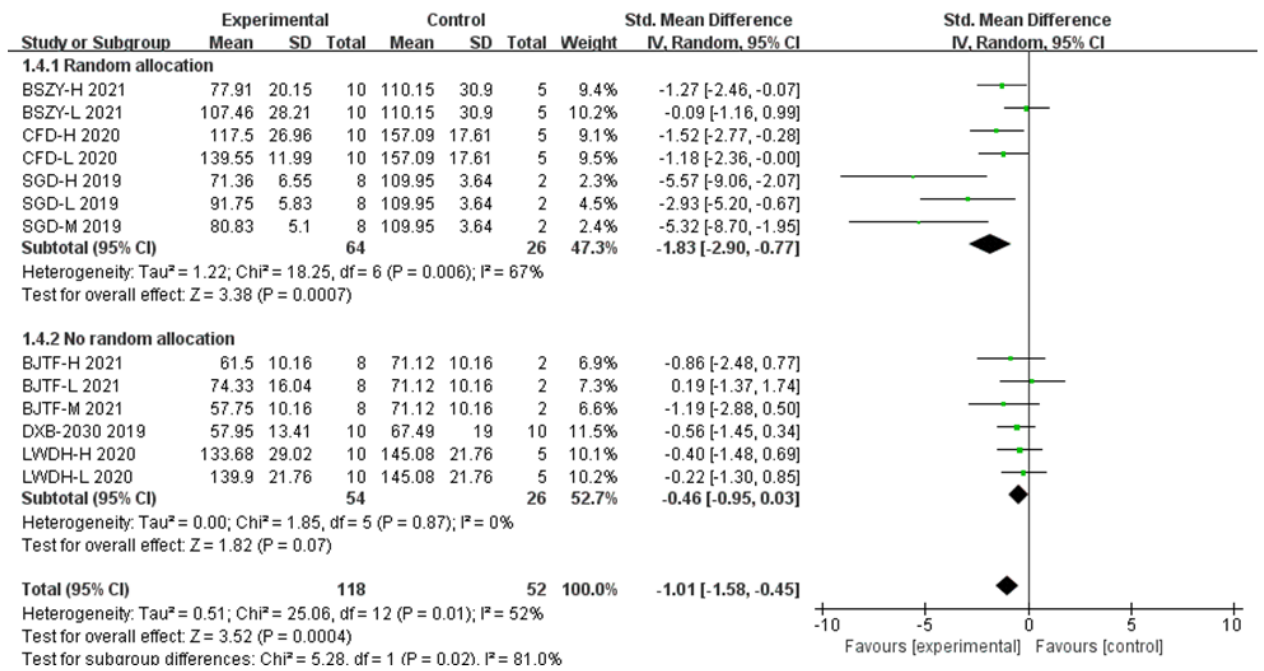
B



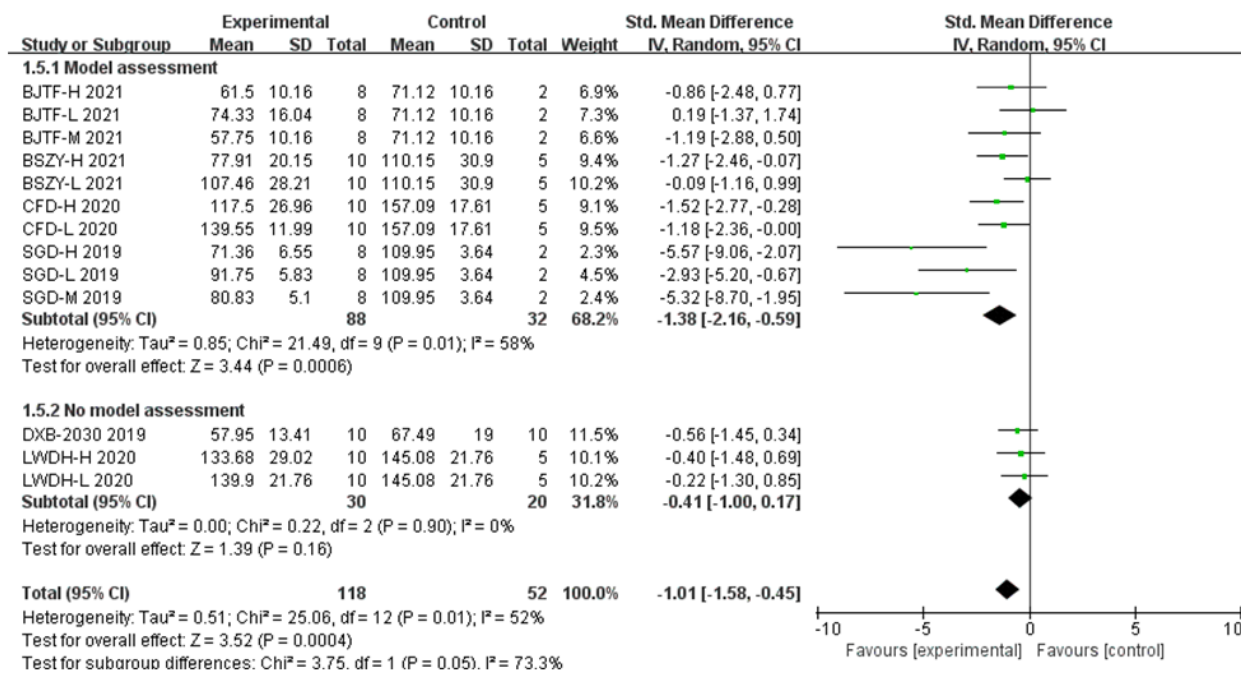
C



D



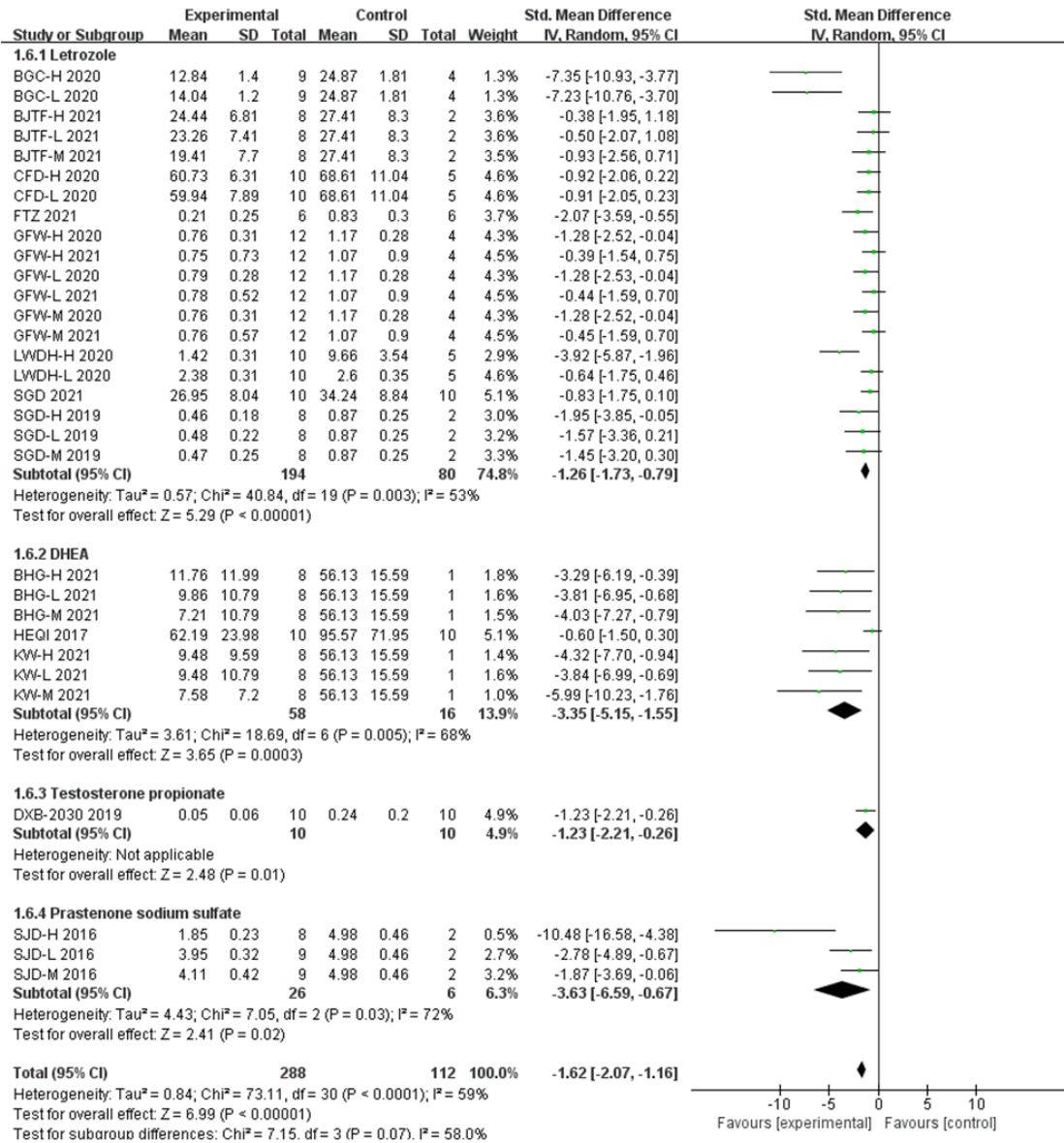
E



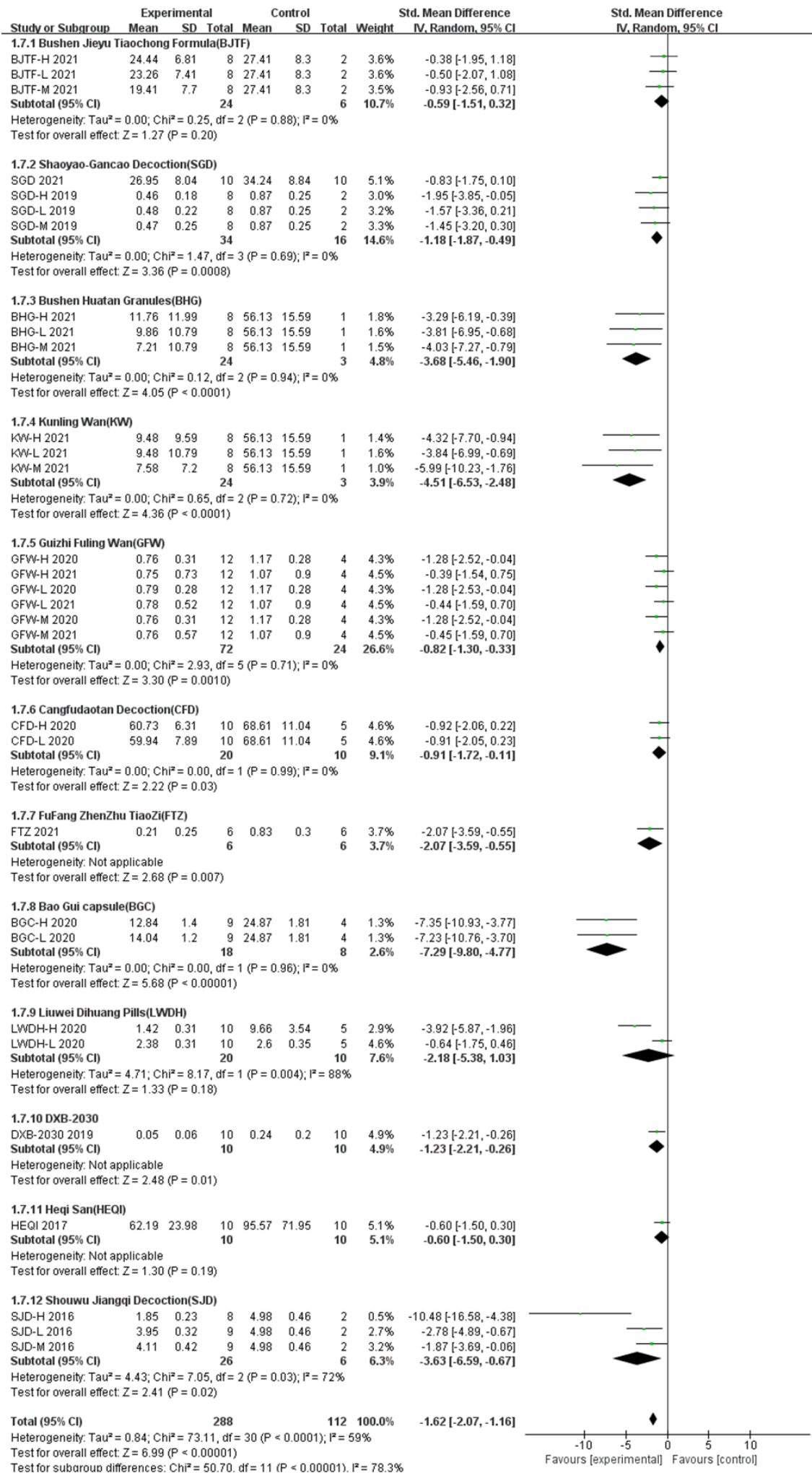
Supplementary Fig. 1 Subgroup analyses were carried out according to (A) PCOS induction drug, (B) formula composition, (C) temperature control, (D) random allocation, and (E) model assessment.

Supplementary Fig. 2 Forest plot of the efficacy of CHM on testosterone

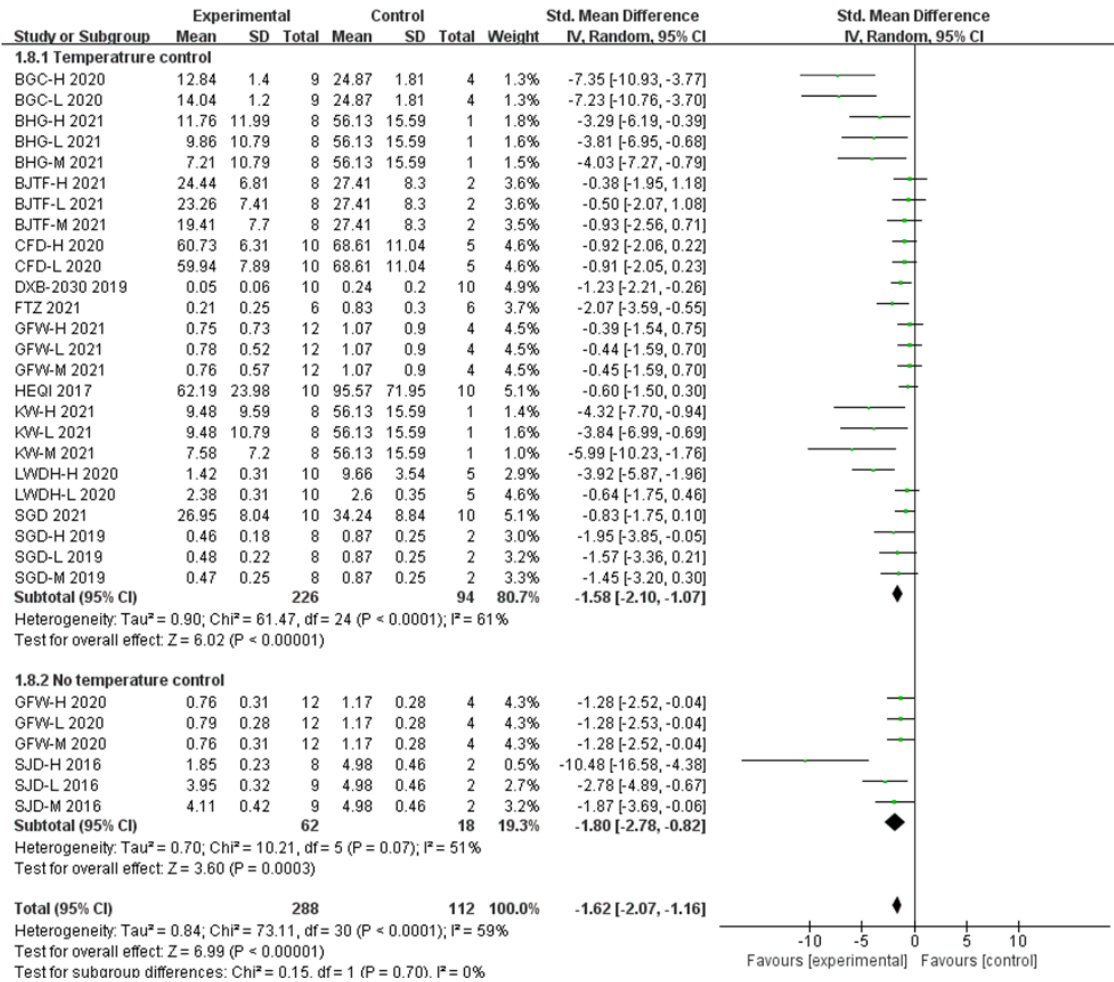
A



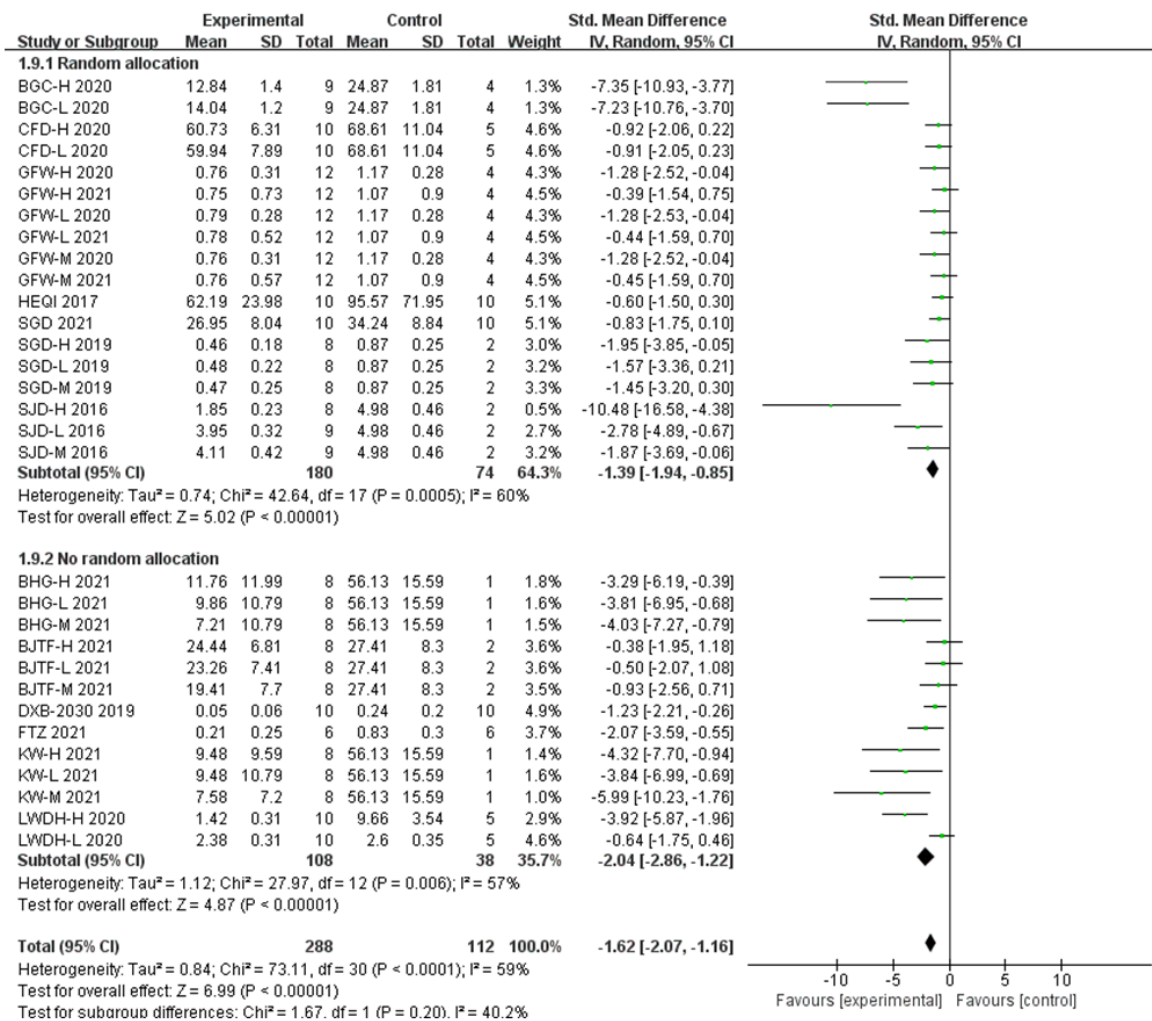
B



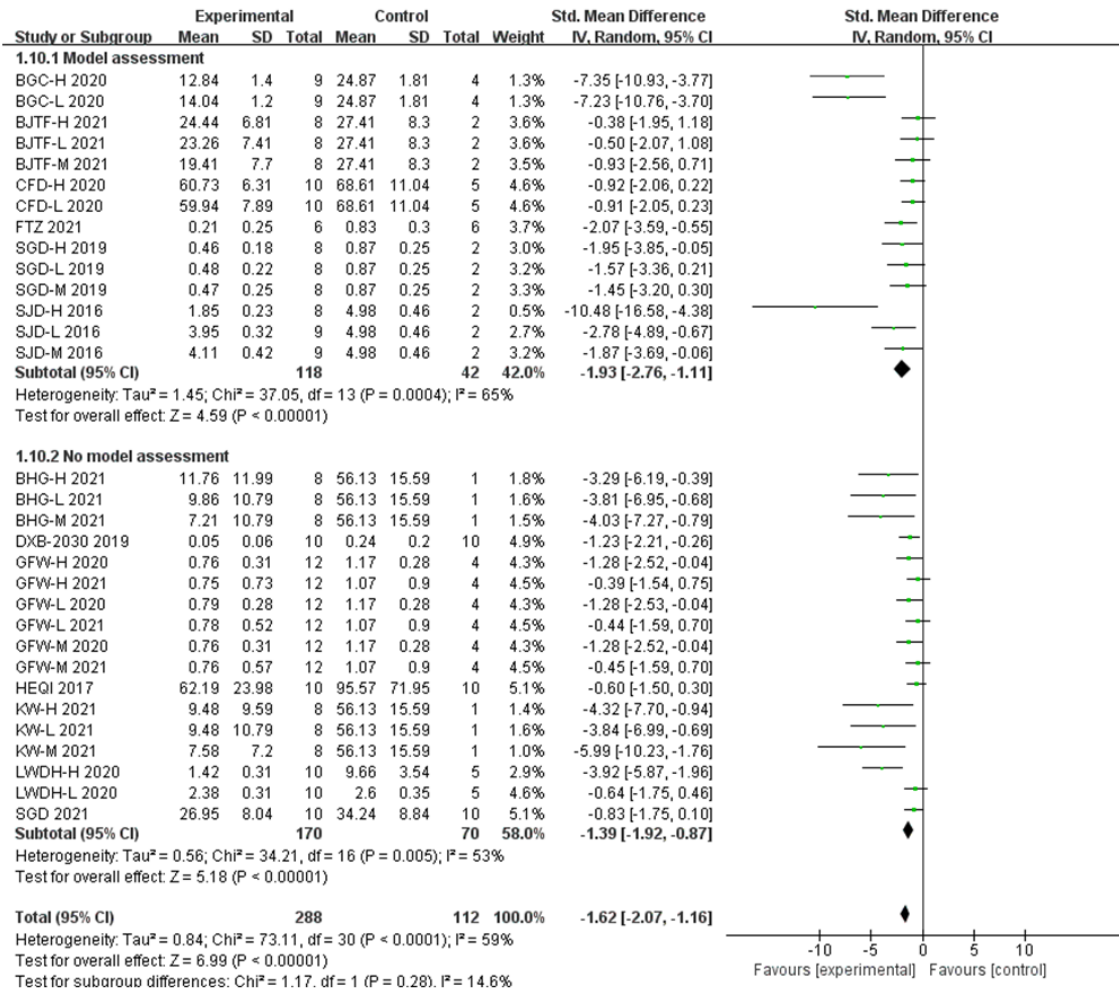
C



D



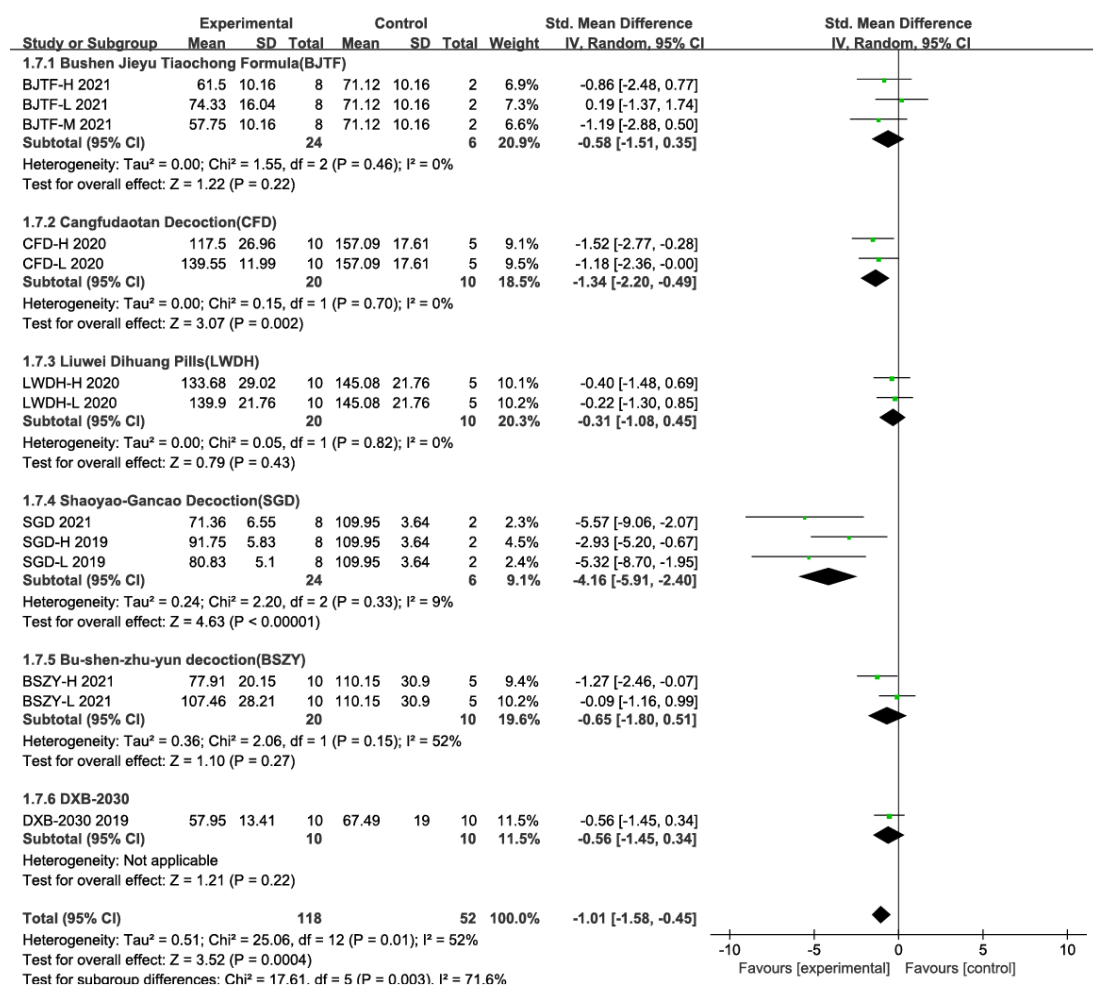
E



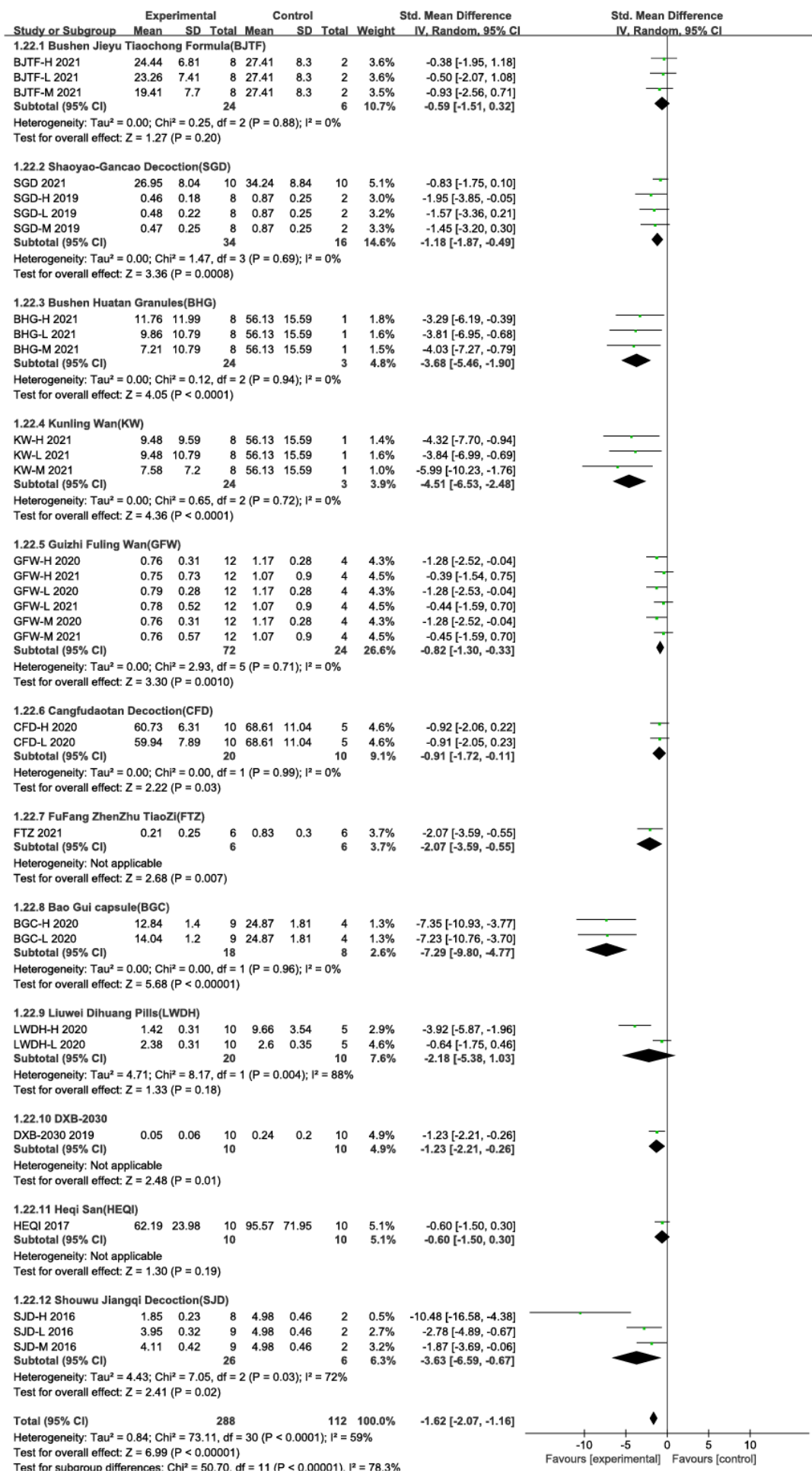
Supplementary Fig. 2 Subgroup analyses were carried out according to (A) PCOS induction drug, (B) formula composition, (C) temperature control, (D) random allocation, and (E) model assessment.

Supplementary Fig. 3 Forest plots of the efficacy of different formulas.

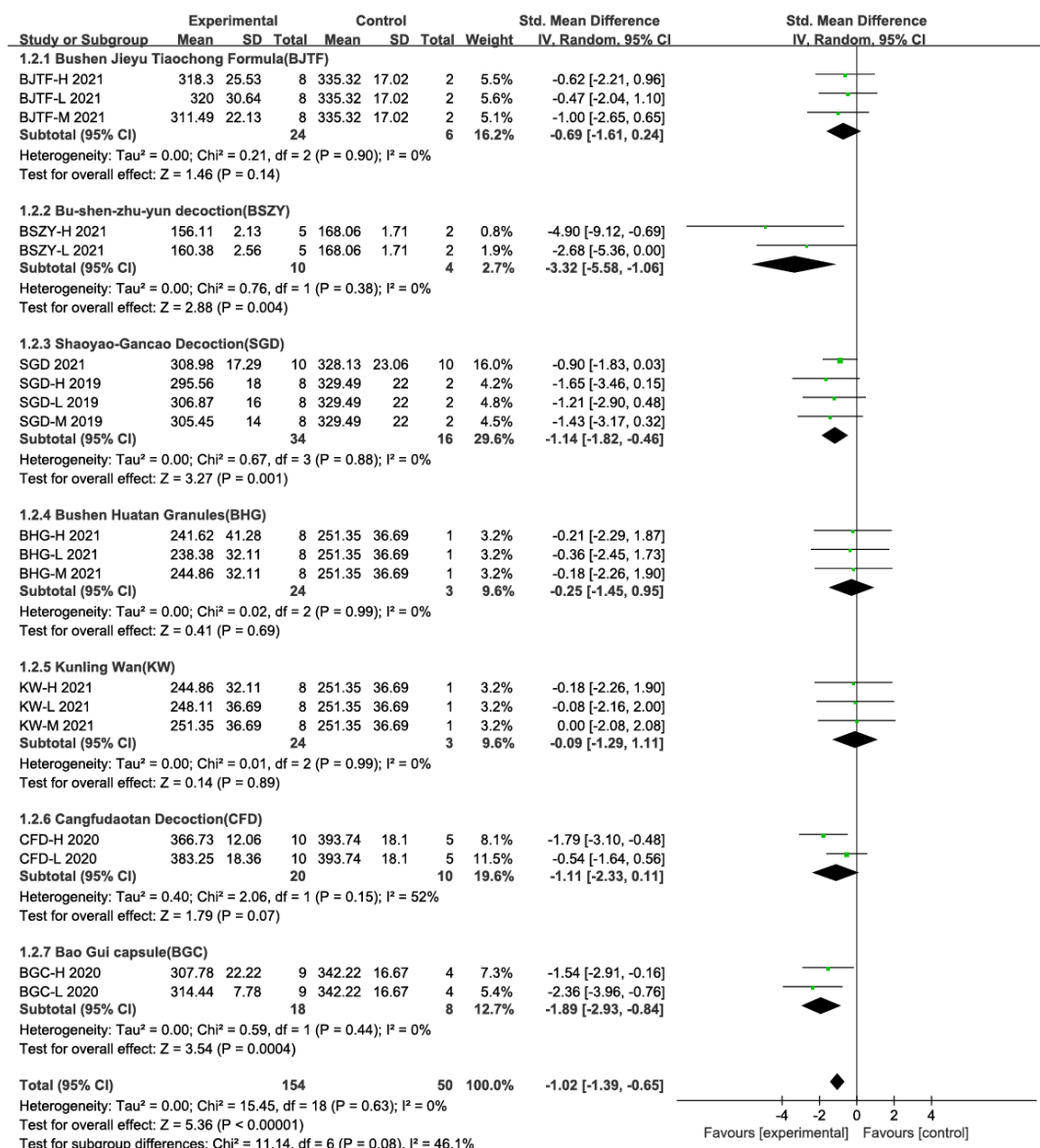
A



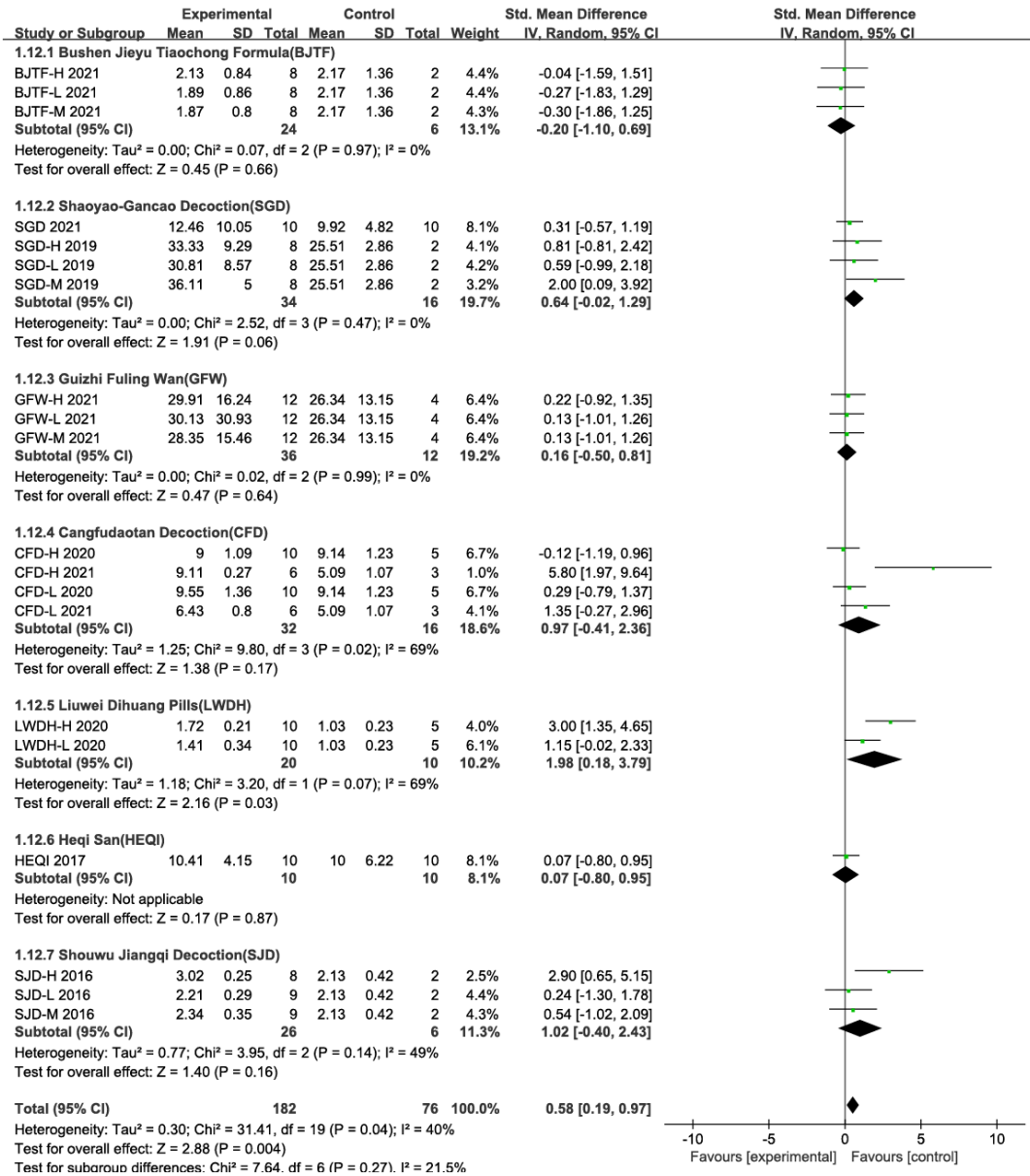
B

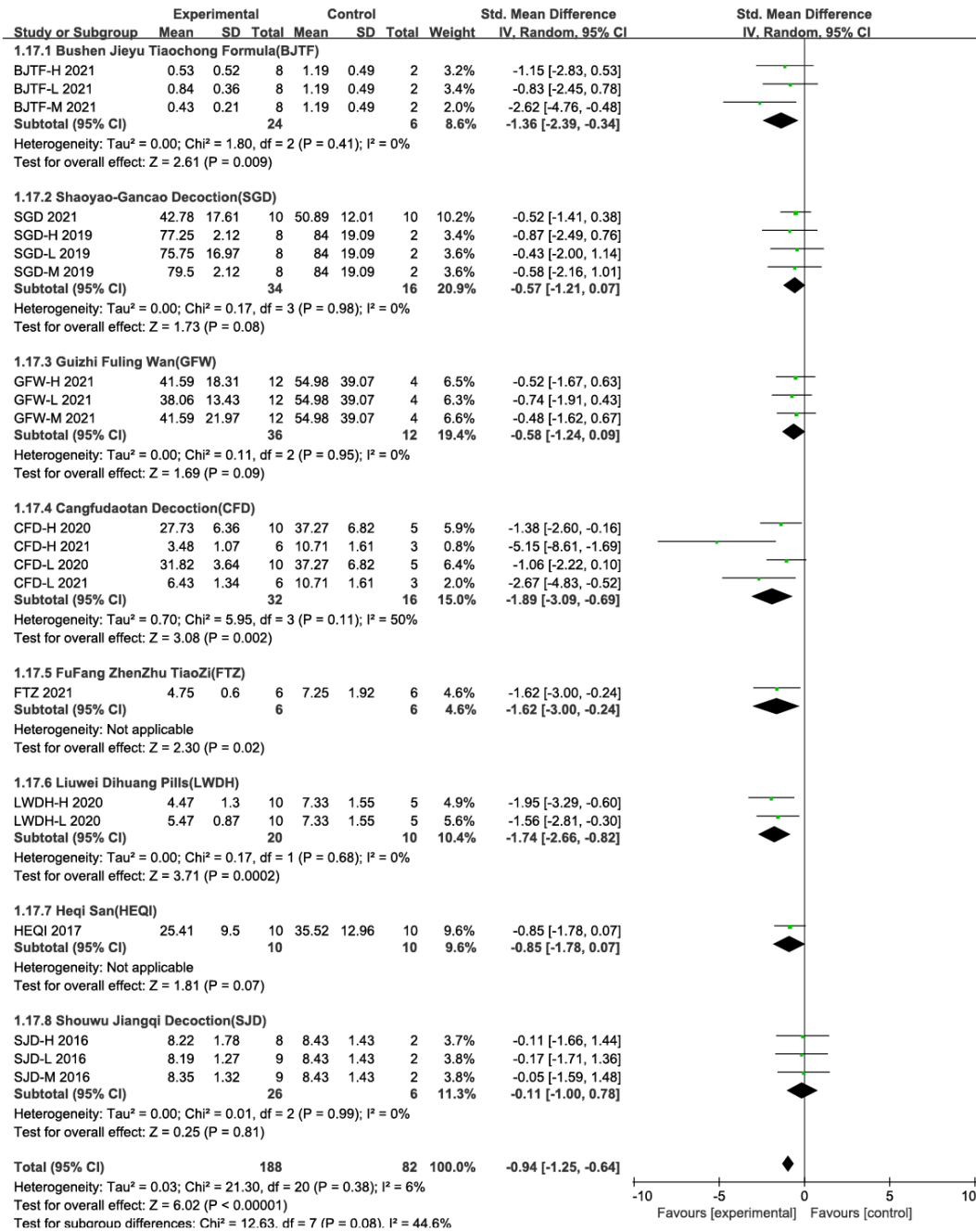


C

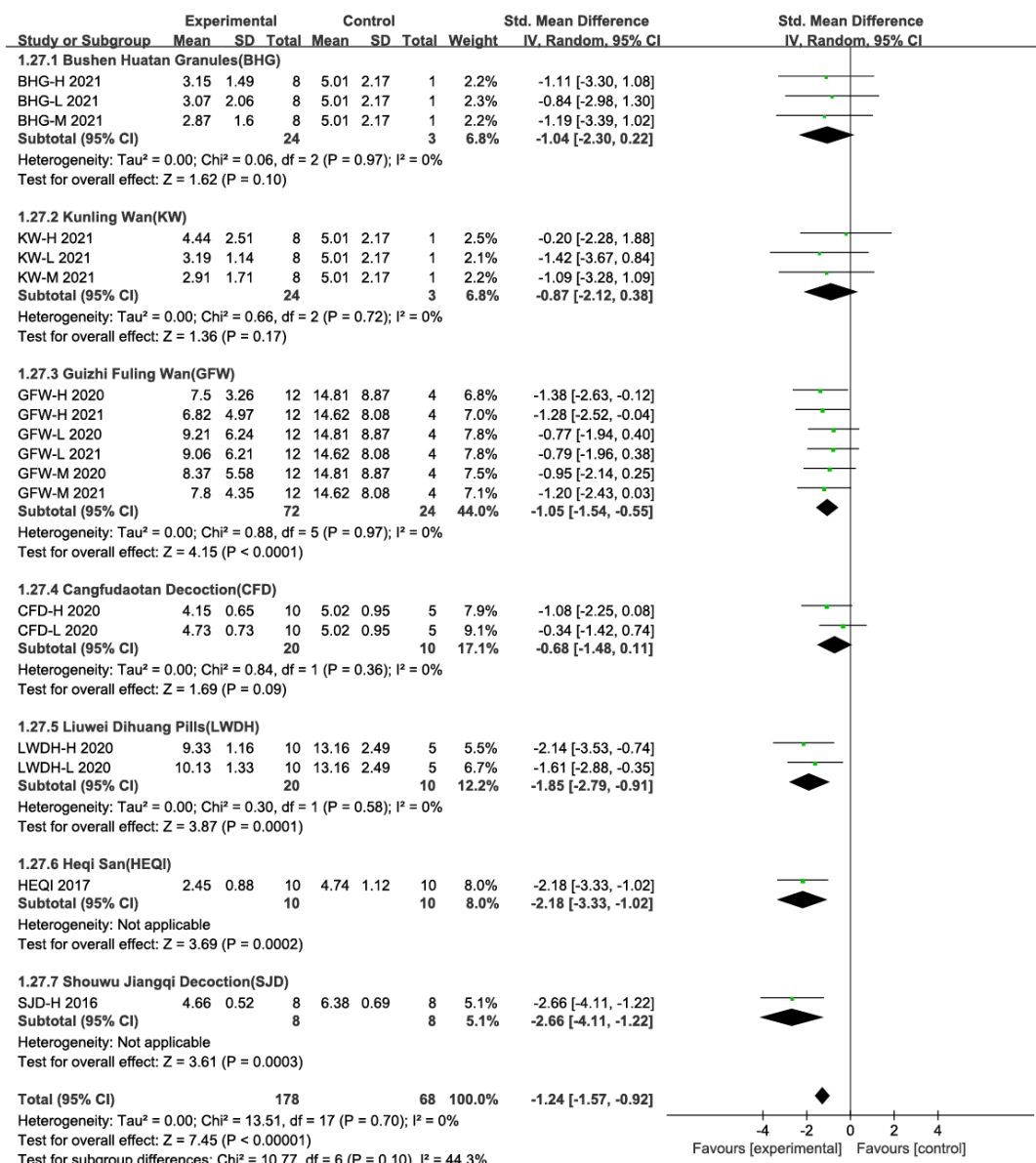


D



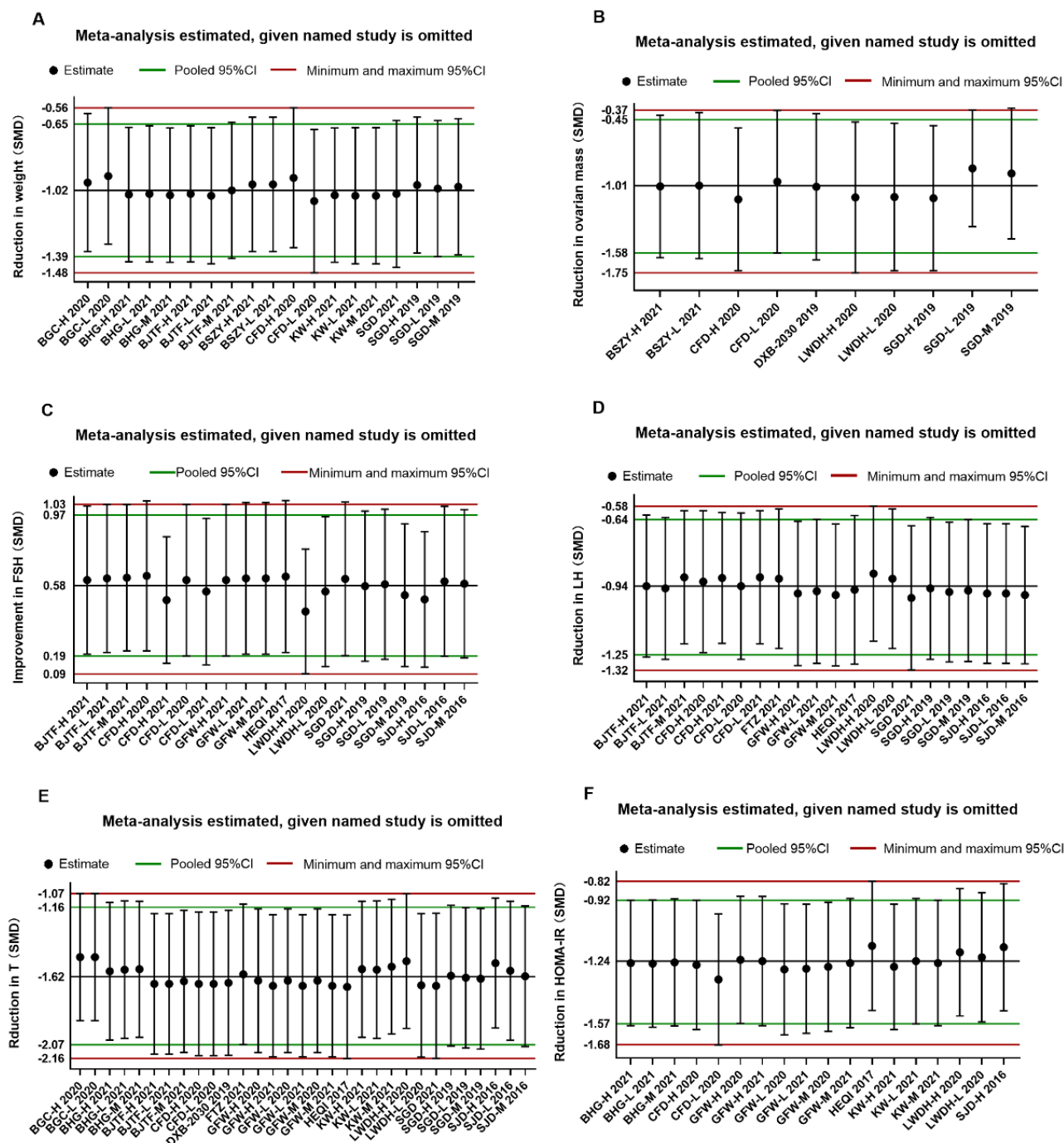


F



Supplementary Fig. 3 According to different formulas, meta-analysis was conducted for (A) ovarian mass, (B) testosterone, (C) weight, (D) FSH, (E) LH, and (F) HOMA-IR.

Supplementary Fig. 4 Sensitivity analysis



Supplementary Fig. 4 The sensitivity analysis was conducted for (A) weight, (B) ovarian mass, (C) FSH, (D) LH, (E) testosterone, and (F) HOMA-IR.

Supplementary Fig. 5 Forest plots of weight improvement by different PCOS induction drugs

