








Corrigendum

Corrigendum to “The Chinese Medicine, Jiedu Recipe, Inhibits the Epithelial Mesenchymal Transition of Hepatocellular Carcinoma via the Regulation of Smad2/3 Dependent and Independent Pathways”

Shufang Liang ¹, Yong Zou ¹, Jingdong Gao,² Xiaolin Liu,¹ Wanfu Lin ¹, Zifei Yin,¹ Juan Du ¹, Ya’ni Zhang,¹ Qunwei Chen ³, Shu Li,⁴ Binbin Cheng ¹, and Changquan Ling ¹

¹Department of Traditional Chinese Medicine, Changhai Hospital, Second Military Medical University, Shanghai 200433, China

²Department of Oncology, Suzhou Hospital of Traditional Chinese Medicine, Suzhou 215009, Jiangsu, China

³Department of Oncology, Zhejiang Provincial Hospital of Traditional Chinese Medicine, Hangzhou 310006, Zhejiang, China

⁴Department of Gastroenterology, Baoshan Branch,

Shuguang Hospital Affiliated to Shanghai University of Traditional Chinese Medicine, Shanghai 201900, China

Correspondence should be addressed to Binbin Cheng; cbb8202@126.com and Changquan Ling; changquanling@smmu.edu.cn

Received 11 April 2022; Accepted 11 April 2022; Published 19 May 2022

Copyright © 2022 Shufang Liang et al. This is an open access article distributed under the Creative Commons Attribution License, which permits unrestricted use, distribution, and reproduction in any medium, provided the original work is properly cited.

In the article titled “The Chinese Medicine, Jiedu Recipe, Inhibits the Epithelial Mesenchymal Transition of Hepatocellular Carcinoma via the Regulation of Smad2/3 Dependent and Independent Pathways” [1], image concerns were raised on PubPeer [2]. Specifically, in Figure 4(c), panels

Huh7 JR (0.1 mg/ml) and Huh7 JR (1 mg/ml) appear to be identical. The authors explained that this was due to an error introduced during manuscript preparation and provided the raw data upon request. The corrected image is given as follows.

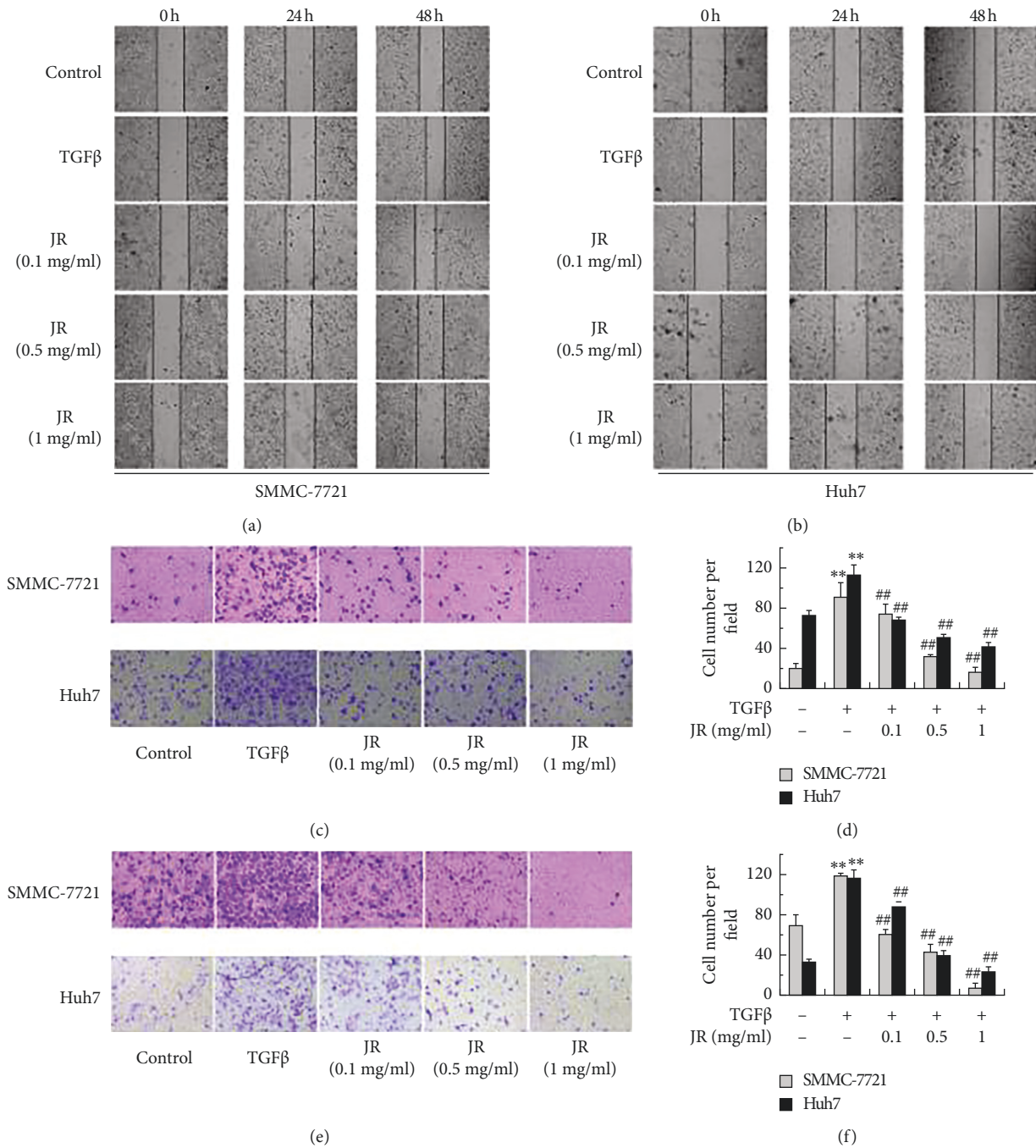


FIGURE 4: JR inhibits TGFβ1-induced migration and invasion of HCC cells. The wound healing assay (a-b), transwell assay for the migration (c-d), and invasion (e-f) of SMMC-7721 and Huh7 cells were performed. Each bar represents the means ± SD (n = 3). **P < 0.01, compared with control group; ##P < 0.01, compared with TGFβ1 group.

References

- [1] S. Liang, Y. Zou, J. Gao et al., “The Chinese medicine, Jiedu recipe, inhibits the epithelial mesenchymal transition of hepatocellular carcinoma via the regulation of Smad2/3 dependent and independent pathways,” *Evidence-Based Complementary and Alternative Medicine*, vol. 2018, Article ID 5629304, 8 pages, 2018.
- [2] I. Tanganyikensis, “The Chinese medicine, Jiedu recipe, inhibits the epithelial mesenchymal transition of hepatocellular carcinoma via the regulation of Smad2/3 dependent and independent pathways”, PubPeer, June 2020, <https://pubpeer.com/publications/57C5B0125FC00B8109D51E59B273E3#1>.