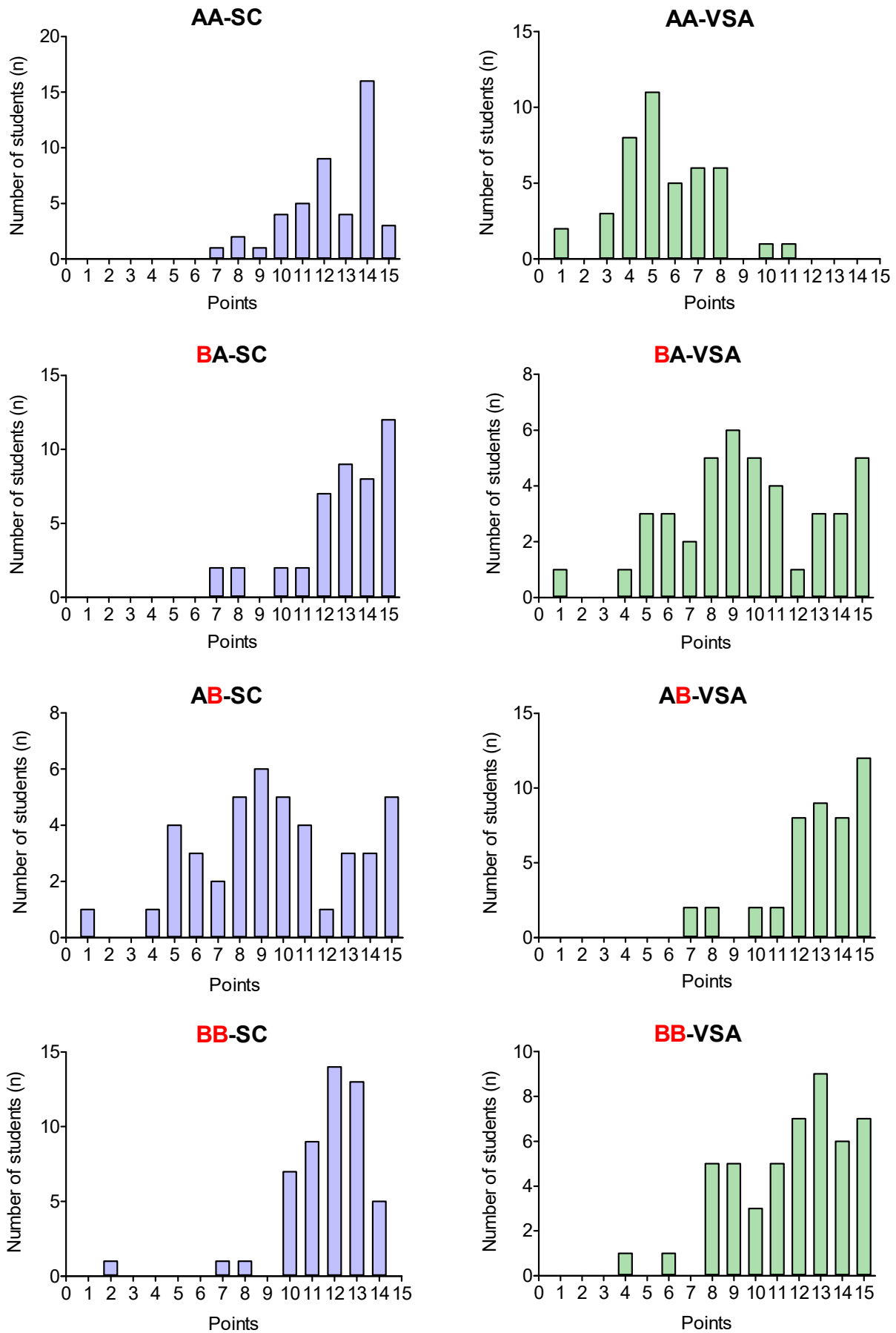
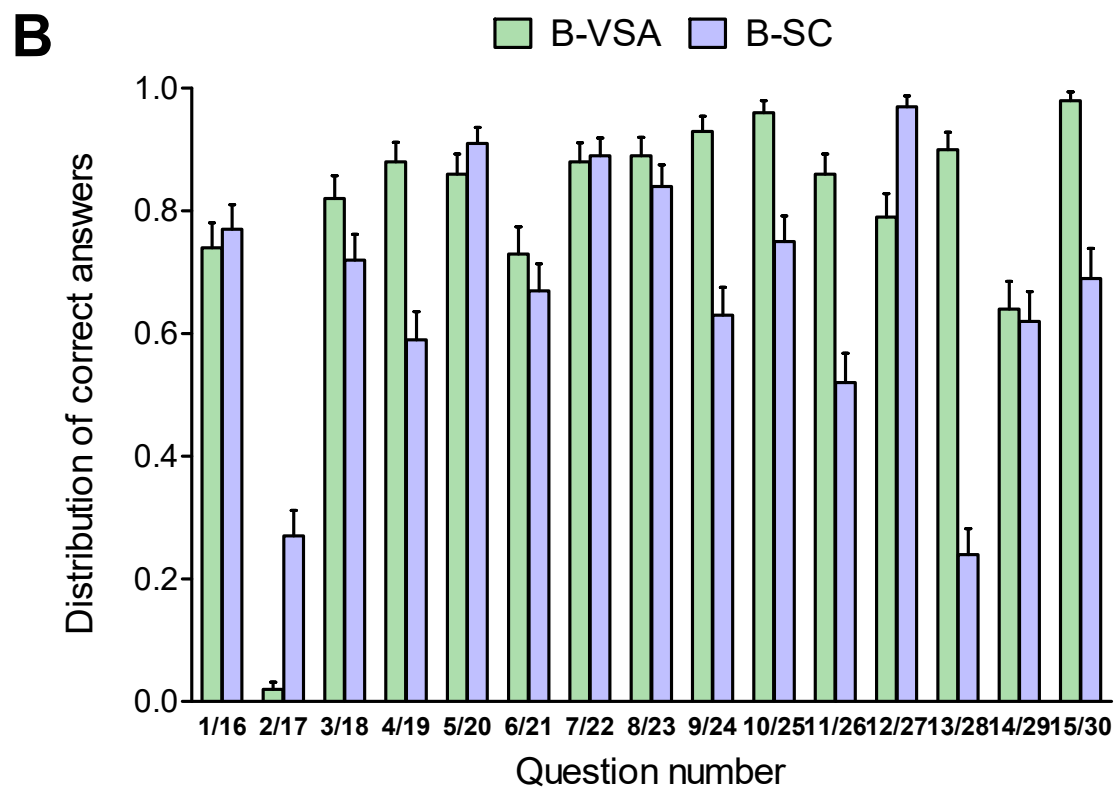
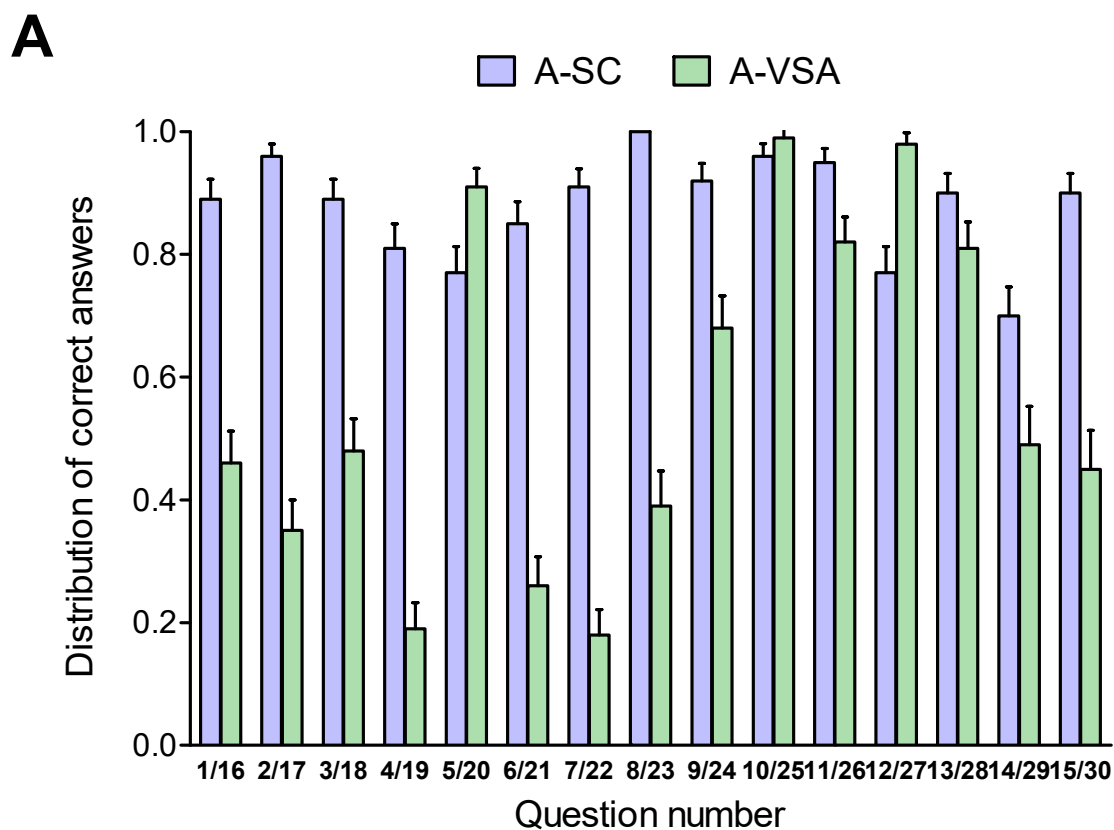


**Figure S1:** Distribution of points in the first online test in WS 2017/2018 for groups A, A-SC, A-VSA, B, B-SC and B-VSA.

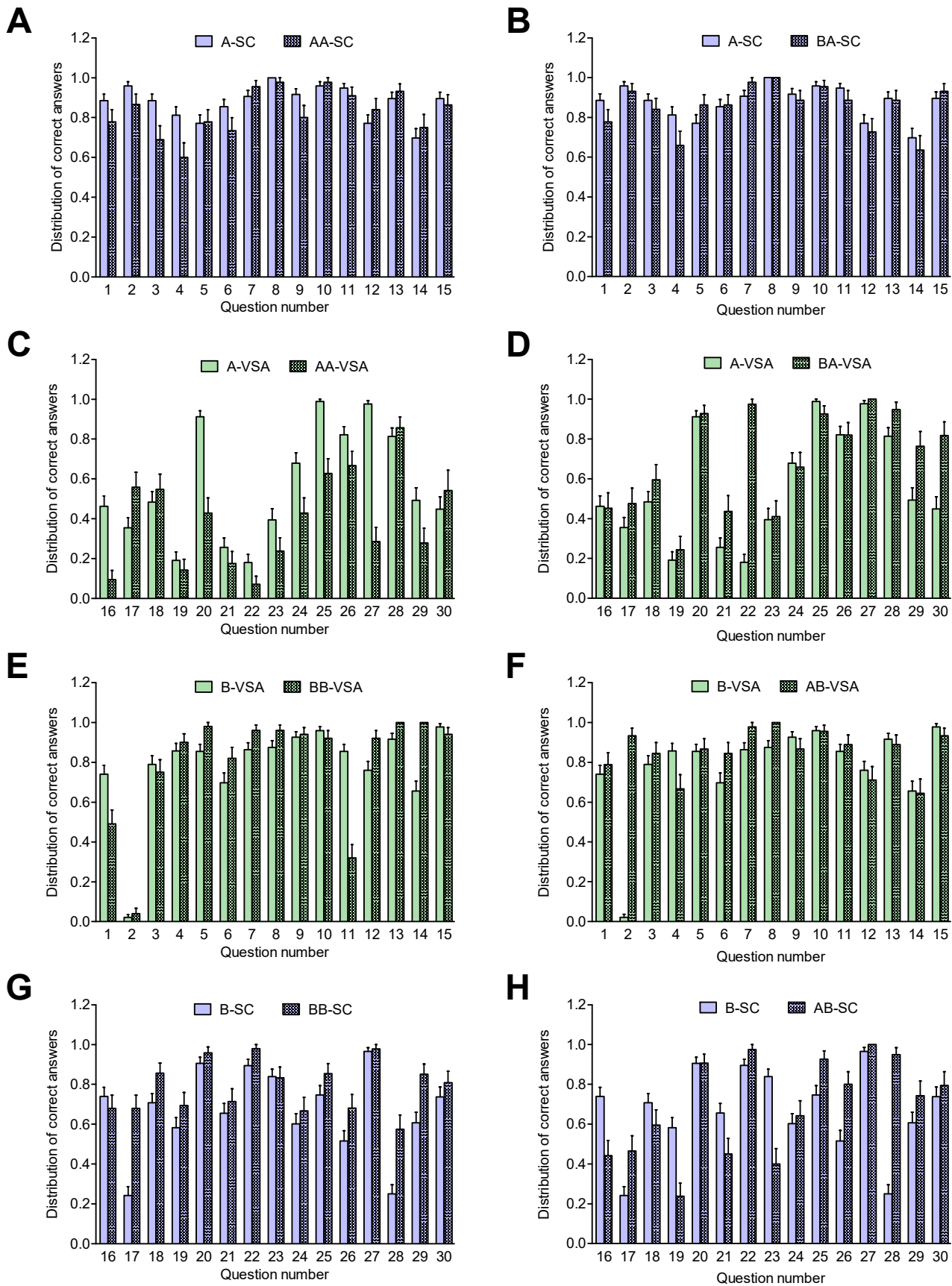
Figure S2



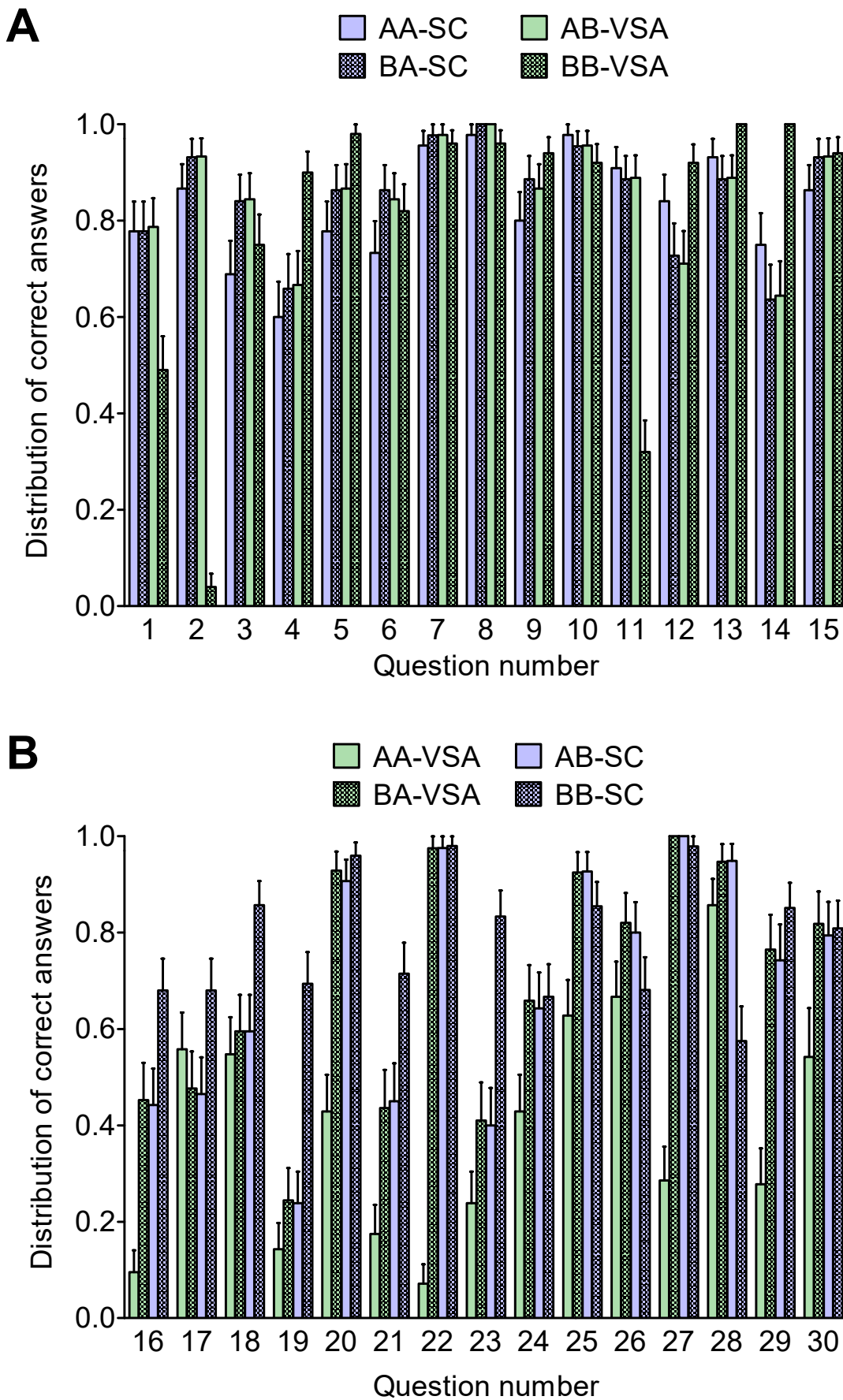
**Figure S2:** Distribution of points in the second online test in WS 2018/2019 for groups AA-SC, AA-VSA, BA-SC, BA-VSA, AB-SC, AB-VSA, BB-SC, BB-VSA



**Figure S3:** Pairwise comparison of the distribution of correct answers in group A-SC versus A-VSA (**A**) and group B-VSA versus B-SC (**B**) in the winter semester 2017/2018.



**Figure S4:** Pairwise comparison of the distribution of correct answers between groups from WS 2017/2018 (first online test) and from WS 2018/2019 (second online test). **(A)** A-SC versus AA-SC; **(B)** A-SC versus BA-SC; **(C)** A-VSA versus AA-VSA; **(D)** A-VSA versus BA-VSA; **(E)** B-VSA versus BB-VSA; **(F)** B-VSA versus AB-VSA; **(G)** B-SC versus BB-SC; **(H)** B-SC versus AB-SC.



**Figure S5:** Comparison of the distribution of correct answers between all groups from WS 2018/2019 (second online test). **(A)** Comparison for questions 1 - 15; **(B)** comparison for questions 16 – 30.