

Supplementary Material 1: Northern and southern cross sections

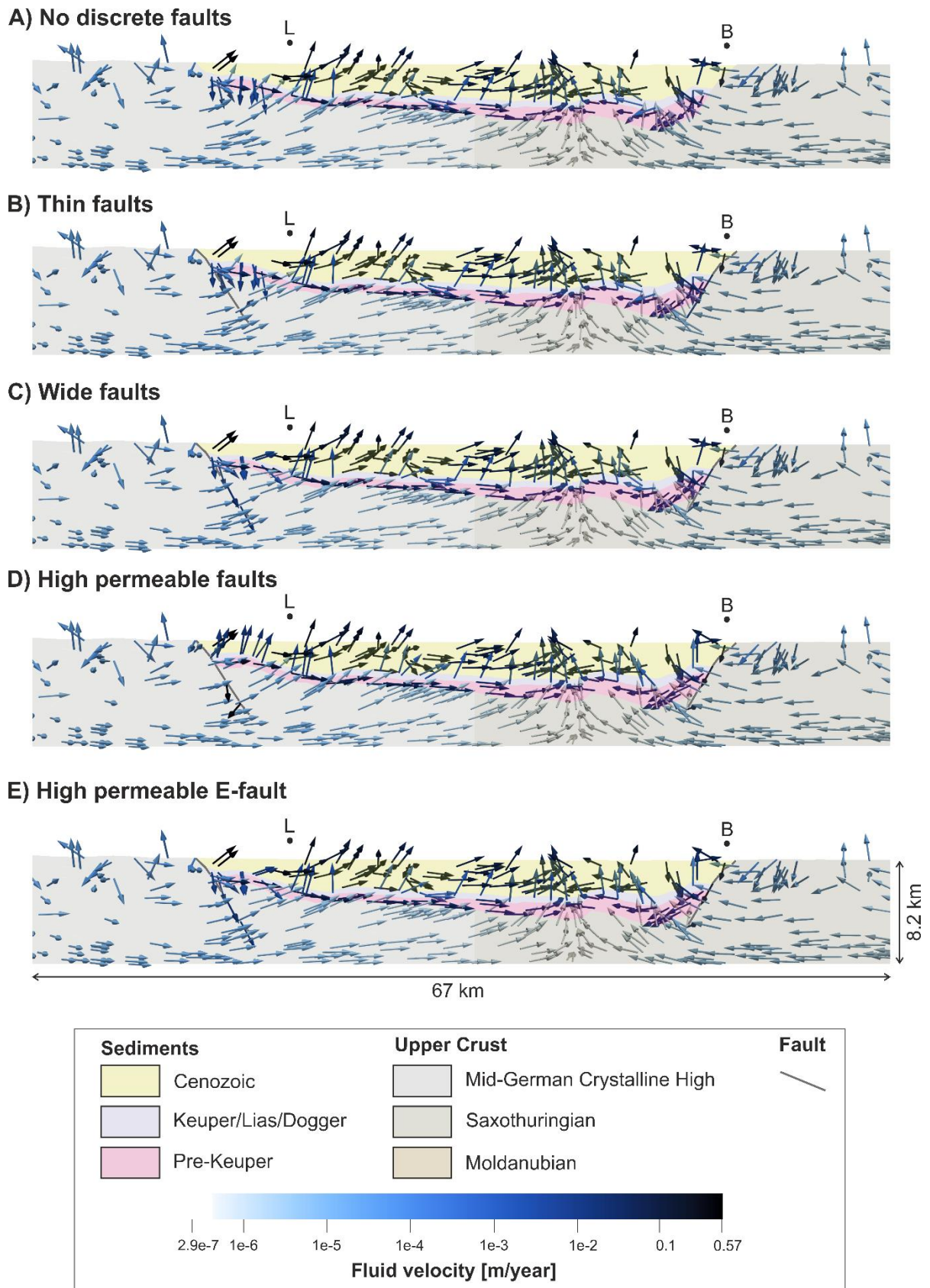
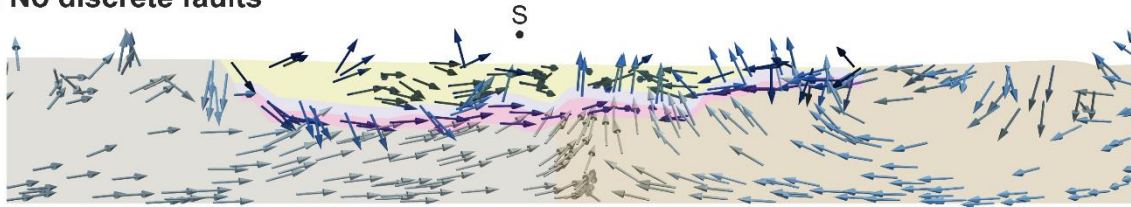
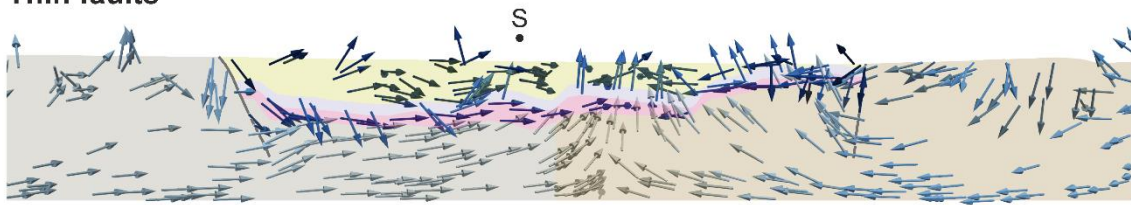


Fig. A1: Fluid flow in the northern model area at Landau (L) and Bruchsal (B) for different simulations (for location compare Fig. 8; for model explanation compare Tab. 2)

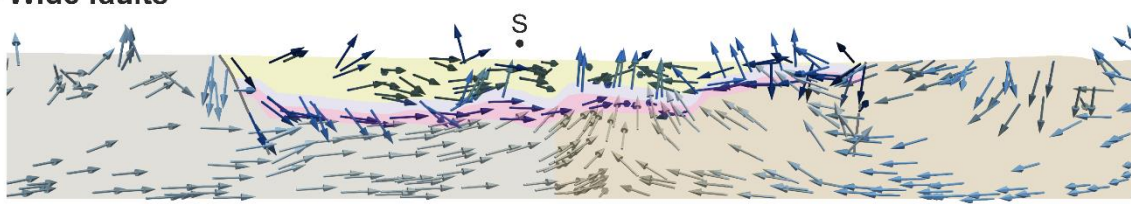
A) No discrete faults



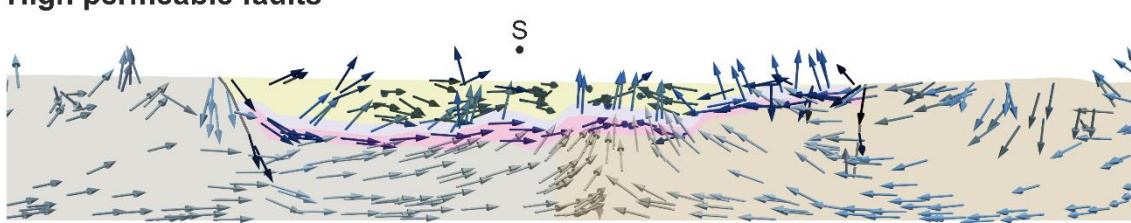
B) Thin faults



C) Wide faults



D) High permeable faults



E) High permeable E-fault

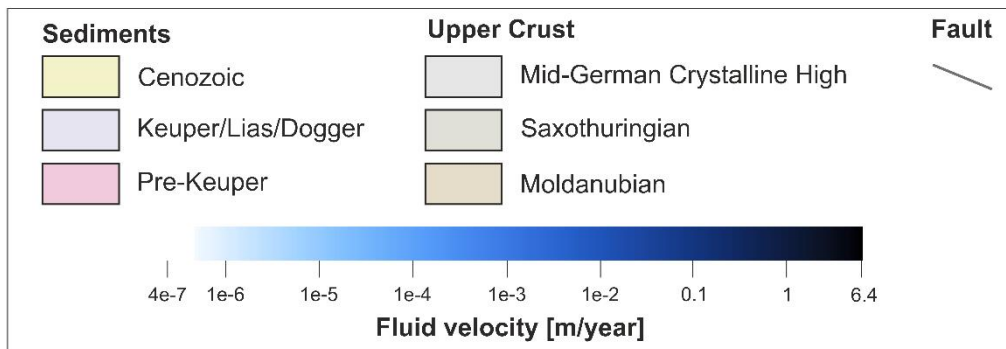
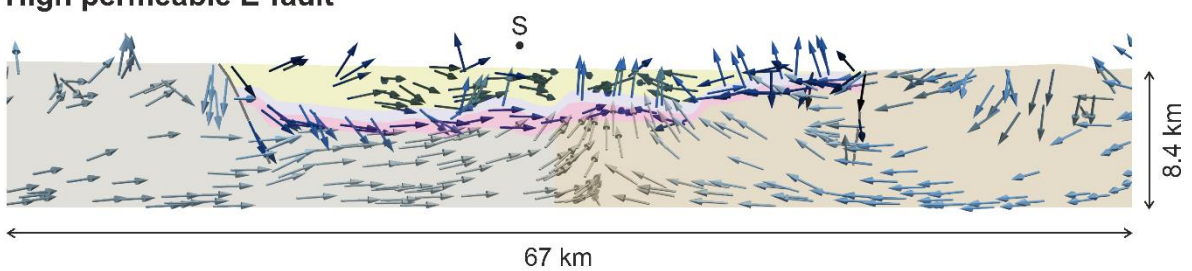


Fig. A2: Fluid flow in the southern model area at Strasbourg (S) for different simulations (for location compare Fig. 8; for model explanation compare Tab. 2)

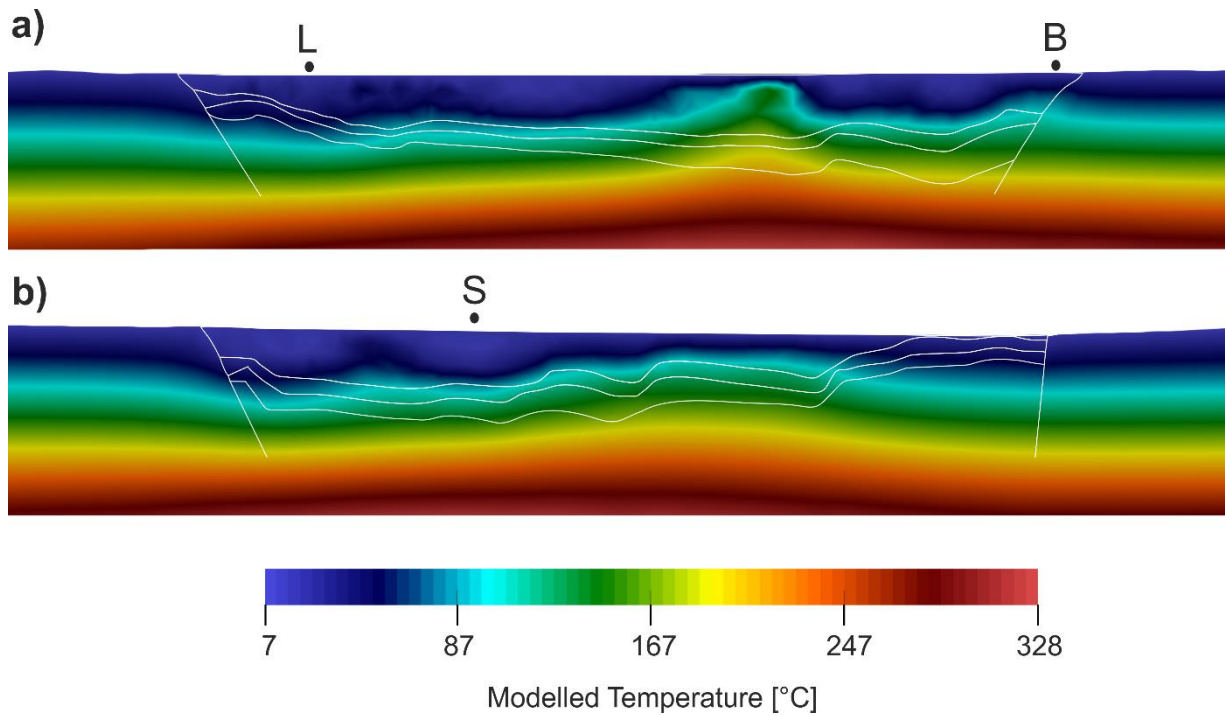


Fig. A3: Simulated temperature for model B (compare Tab. 2) in the (a) northern and (b) southern model area (location of cross sections as for Fig. B1 and B2; L: Landau, B: Bruchsal, S: Strasbourg)