

Research Article

Possible Continuous Vertical Water Leakage of Deep Aquifer: Records from a Deep Well in Tianjin Province, North China

Yan Zhang ^{1,2,3}, Xiaolong Sun,⁴ Tianming Huang ^{1,2,3}, Shengwen Qi,^{1,2,3} Li-Yun Fu,^{5,6} Qiu-Ye Yang ^{1,2}, Junhua Hu,⁷ Bowen Zheng,^{1,2,3} and Wang Zhang^{2,3,8}

¹Key Laboratory of Shale Gas and Geoenvironment, Institute of Geology and Geophysics, Chinese Academy of Sciences, Beijing 100029, China

²Innovation Academy for Earth Science, Chinese Academy of Sciences, China

³University of Chinese Academy of Sciences, Beijing 100049, China

⁴National Institute of Natural Hazards, Ministry of Emergency Management, China

⁵Shandong Provincial Key Laboratory of Deep Oil and Gas, China University of Petroleum (East China), Qingdao 266580, China

⁶School of Geosciences, China University of Petroleum (East China), Qingdao 266580, China

⁷State Key Laboratory of Simulation and Regulation of Water Cycle in River Basin, China Institute of Water Resources and Hydropower Research, A-1 Fuxing Road, Beijing 100038, China

⁸State Key Laboratory of Lithospheric Evolution, Institute of Geology and Geophysics, Chinese Academy of Sciences, Beijing 100029, China

Correspondence should be addressed to Yan Zhang; ezhangyan@mail.iggcas.ac.cn and Tianming Huang; tmhuang@mail.iggcas.ac.cn

Received 8 April 2022; Revised 18 October 2022; Accepted 29 October 2022; Published 16 November 2022

Academic Editor: Mohammad Sarmadivaleh

Copyright © 2022 Yan Zhang et al. This is an open access article distributed under the Creative Commons Attribution License, which permits unrestricted use, distribution, and reproduction in any medium, provided the original work is properly cited.

It is well known that the storage of the valuable helium and other natural gases needs thick well-confined aquitards. Meanwhile, the assumption that deep aquifers are confined is most evident from the wide practices of targeting deep aquifers as the storage of toxic wastes and CO₂. With the negative phase shifts of the M₂ tidal wave, previously, deep Gaocun well (~3500 m) in the North China Platform is assumed to be confined fairly well. However, water level of the Gaocun well has been continuously decreasing for ~40 years without coseismic variations and without explainable mechanism. In this study, innovatively, we find that even buried in ~3500 meters deep, and covered by thick compact mudstones, the aquifer of well Gaocun is calculated to be continuously leaking for ~40 years probably induced by the vertical leakage incurred by aquitard fractures, which is under the assumptions of the none-leaking bottom layer and none direct pumping or exploiting in the observation aquifer layer. Meanwhile, for the first time, we did a detailed systematic comparison between the leaky models of the tidal response and the barometric response of water level, which indicate a consistency leaky result, and the minor difference mainly induced by the frequency differences. Merits and demerits of both models are also analyzed. Last but not least, underground fluid leakages might frequently occur, which are becoming increasingly worldwide urgent since that might also be related with surface sourced contaminations, toxic waste burials, and burial and exploration of the natural gas reservoirs.

1. Introduction

Deep aquifers are always assumed to be confined, which is most evident from the worldwide practices of targeting deep aquifers as the storage of toxic wastes (e.g., [1–3]) and for the proposed storage of sequestered CO₂ (e.g., [4]). Moreover, Benson and Cole [4] explicitly stated that aquifers deeper

than 800 m and confined by thick and extensive aquitard should be suitable for the sequestration of CO₂, whereas, nowadays, groundwater leakage is an incremental vital problem for many critical aquifers worldwide (e.g., [1]), and safety of the underground waste repositories might be influenced by variations of vertical permeability in confined layers. Plus, the agricultural waste, such as the pesticides

and fertilizers, also might migrate from the surface soil down into the groundwater through the vertical leakage fractures. Hence, sustained observation of the confinement of aquifers should be needed to detect any leakage to allow appropriate prevention of the contamination of groundwater resource on the one hand and the outflow of the stored wastes into the environment on the other.

Traditionally, pure horizontal flow model [5] or pure vertical flow model [6, 7] is commonly used to estimate hydraulic or poroelastic parameters. However, many aquifers may neither be perfectly confined nor fully unconfined but behave somewhere between the two endmembers [8].

For the tidal response of borehole water level to a semiconfined aquifer, Wang et al. [9] obtained a general analytical solution for the tidal response of water level with both horizontal flow and vertical flow (mixed-flow model). That is deduced from the early analytical solution of Hantush and Jacob [10], which is for the leaky and multilayered aquifers. Recently, the derived solutions were applied to study pressure variation in response to water injection/extraction in boreholes (e.g., [11]) or used to calculate hydraulic parameters both for the aquifer and for the aquitard (e.g., [9, 12–14]). Meanwhile, for the barometric response of borehole water level in a semiconfined aquifer, several analytical models have been deduced, and the analytical solution of Rojstaczer [15] was widely applied to estimate hydraulic properties (e.g., [13, 15–17]). In addition, Odling et al. [18] compared the numerical and analytical calculated results and also indicated that properties of a layer in an area extending some hundreds of meters from the monitored borehole could be estimated. Finally, as indicated by Wang and Manga [19], for the leaky aquifer, both the tidal response leaky model of Wang et al. [9] and the barometric response model of Rojstaczer [15] are with the same analytical solution, and the recent numerical testing of Zhu and Wang [20] indicates some limitations of this ideal analytical solution.

Although both the tidal response and the barometric response of borehole water level have been studied previously, the results obtained from the two models separately have never been compared quantitatively and deeply before. Though Zhang et al. [13] compared the results from both models, they only used the M_2 tidal wave for analysis, and they preset the obtained parameters (transmissivity and storativity of the aquifer) from the barometric response model as the input premise parameters for the tidal response leaky model, which must obtain the similar result of the vertical leakage (K' m/s) since as indicated by Wang and Manga [19] both of the two models are with the same analytical solution. In other words, they combined the barometric and the tidal response models together for the calculation, and the process is not independent. While for the study of Sun and Xiang [17] or Sun et al. [21], the obtained result from the barometric pressure analysis based on the model of Rojstaczer [15] has not calculated the coherence coefficient between the water level and the barometric pressure, and thus, the wide span (10^{-2} cpd~102 cpd) of fitting should be unreasonable for all those wells since the coherence coefficients are very low (towards 0) when extended to the frequency region of $> \sim 10$ cpd for most wells.

In this study, in order to test the confinement of the deep aquifer and to compare the tidal response and the barometric response leaky models independently, well Gaocun is set as the study objective. We used those two response (barometric response and tidal response) models totally separately to do calculations. Results obtained from the leaky model of the tidal response [9] solely with both the O_1 (diurnal) and M_2 (semidiurnal) tidal waves and that obtained from the barometric response model [15] are compared, which indicate similar and consistent leaky results, and the small differences for the value of the vertical leakage might be induced by different frequencies. Therefore, we justified that even at a depth of ~ 3500 m, although the aquifer is covered with thick compact mudstone layers, significant leakage is occurring sustainably for ~ 40 years. For the first time, deep, quantitative, and systematic comparisons between the leaky model of the tidal response and the barometric response leaky model have been made in this paper.

2. Methodology

2.1. Well Selection and Observation. The water-level data documented for the deep Gaocun well (3402.8 m) (Figure 1 and Table 1) in the North China Platform (Figure 2(a)) indicates a continuously decreasing pattern without any coseismic variations for a long time (~ 40 years) even meeting with huge earthquakes (2008 M_w 7.9 Wenchuan and 2011 M_w 9.1 Tohoku earthquakes) (Figure 1). There are no reasonable explanations for this pattern, since the well was previously assumed to be confined fairly well because the M_2 tidal responses of the water level always had negative phase shifts (Figure 3). Besides, the mudstone (clay) layer exists in the aquitard over the aquifer, which perhaps confirm the aquifer to be confined well. Hence, identifying the true mechanism was meaningful and significant. Well Gaocun is with the distance of greater than 100 km away from the ocean (Figure 2(a)); thus, oceanic tides could be avoided, which exert an impactation tens of kilometers away from the coast [22]. In addition, this well is in a relatively stable plain (e.g., the North China Platform), and thus, the outside disturbances and interferences are limited. The lithologic well log is provided in Figure 2(b).

The basic information of this well is given in Table 1. From the year 1979, the SW40-1 (Chong-Qing) analog observation water-level instrument was used, which has a sampling rate of once per hour and a resolution of 1 mm. Since the year 2001, the LN-3A digital water-level instrument was applied to document the water level, with an observation accuracy of $\leq 0.2\%$ full scale, a resolution of 1 mm, and a sampling rate of once per minute. While the barometric pressure is documented with the RTP-1 digital instrument, the sampling rate is 1 sample per minute. For well Gaocun, the barometric observation starts from the year 2015. The software Mopsis was used [24] to calculate and analyze the theoretical Earth tides, and it has been tested against BAYTAP-G (e.g., [14]). In order to be uniform, we used the hourly data of water level from January 1st, 1981, to May 9th, 2020, and resampled into the minute data to do calculations in this study. For the barometric analysis, we used data from the year 2017 to the year 2019.

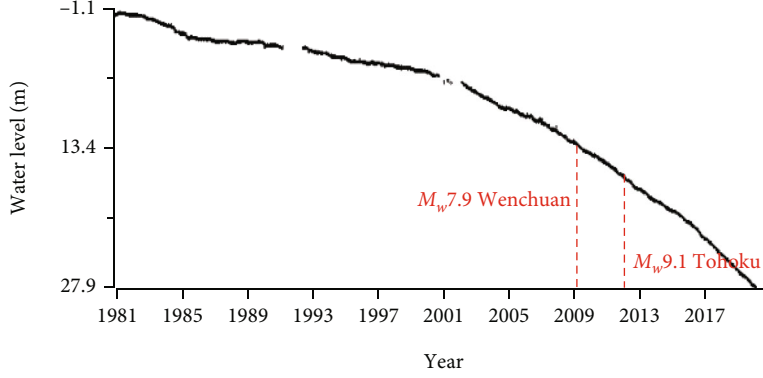


FIGURE 1: Original water level of well Gaocun (from January 1st, 1981, to May 9th, 2020) with an obvious downward trend. The gaps indicate invalid original data records. The vertical dashed lines represent the start time of the 2008 M_w 7.9 Wenchuan earthquake and the 2011 M_w 9.1 Tohoku earthquake, which had not caused any influence on the water level. (GC is a nonartesian well; thus, the y-coordinate axis indicates the distance from the water-level surface to the ground.)

TABLE 1: Basic information of well Gaocun.

Station name (abbreviation)	Epicentral distance (km)		Well diameter (mm)		Well depth (m)	Open interval (m)	Aquifer thickness (m)	Aquitard thickness (m)	Major lithology
	Wenchuan	Tohoku	Outer	Inner					
Gaocun (GC)	1478.00	1894.02	240.00	180.00	3 402.81	2685.50~3402.80	717.30	2685.50	Limestone

2.2. Tidal Response Analyses. In this study, we used both O_1 and M_2 tide responses in the water-level data as constraints, and these have relatively large amplitudes and are free of barometric effects (e.g., [5, 6, 25]). For the analysis of the O_1 and M_2 phase shifts of the tidal strain and water level, a moving time window of 15 days (the appendix) and running step of 30 days are applied. Different window sizes have been tested, and the results are very similar. Since the time series is ~ 40 years long, the dots could be too many and gather together; thus, the relatively long running step (30 days) was applied. The observed M_2 and O_1 phases had opposite signs for the Gaocun well (Figure 3). A negative phase response occurred with the M_2 wave, whereas a positive phase response occurred with the O_1 wave (Figure 3). Strangely, the coseismic phase shifts (also water level (Figure 1)) of this well remained unchanged (Figure 3) even with huge earthquakes (the 2008 M_w 7.9 Wenchuan earthquake or 2011 M_w 9.1 Tohoku earthquake).

2.3. Barometric Response Analyses. Figure 4 shows the coherence estimation between the water level and the barometric pressure. It shows that the coherence was relatively high at low frequencies (< 0.8 cpd, vertical red line) while it deteriorates at high frequencies (> 0.8 cpd) because of the tidal and noises disturbances. Therefore, we concentrate on 0.01 cpd \sim 0.8 cpd frequency range in the below analysis.

The barometric response of groundwater is obtained by cross-spectrum analysis of the water-level and the barometric-pressure time series. The time series of water-level was preprocessed to remove the effects of precipitation, tides, and recharge before the analysis [16].

The detailed analysis of the transfer functions is the same as the study of Zhang et al. [26]. The barometric pressure and water level were split in spans of 2N samples, so as to

reduce noise error. Similar to the dealing of Zhang et al. [13], to be in accordance with the results of Rojstaczer [15] and Sun and Xiang [17], we reduced the barometric phase shifts by 180° , which is just a custom of Rojstaczer [15].

3. Parameters Obtained from the Tidal and Barometric Response Leaky Models

3.1. Parameters Obtained from the Leaky Model with the Tidal Responses of the Water Level. Equations of the leaky model of Wang et al. [9] are shown as follows:

$$\frac{A'_{M_2}}{A'_{O_1}} = \frac{\text{abs}\left(i\omega_{M_2}S/\left(i\omega_{M_2}S + \left(K'/b'\right)\right)\xi\right)}{\text{abs}\left(i\omega_{O_1}S/\left(i\omega_{O_1}S_{\text{aqu}} + \left(K'/b'\right)\right)\xi\right)},$$

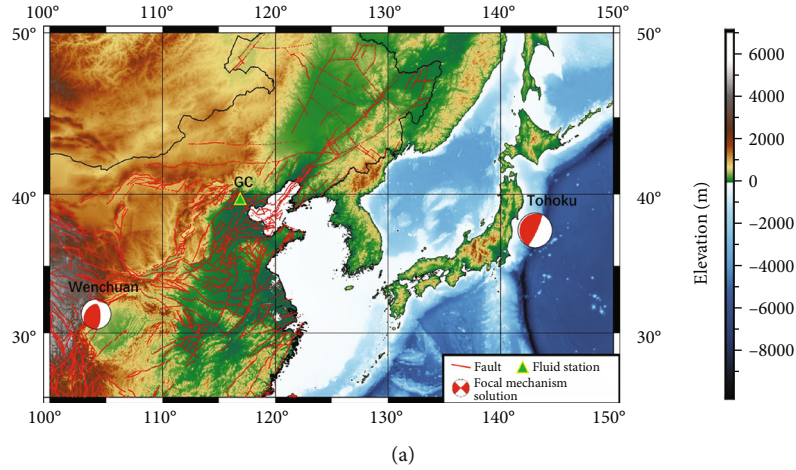
$$\eta_{M_2} = \arg\left(\frac{i\omega_{M_2}S}{\left(i\omega_{M_2}S + \left(K'/b'\right)\right)\xi}\right),$$

$$\eta_{O_1} = \arg\left(\frac{i\omega_{O_1}S}{\left(i\omega_{O_1}S + \left(K'/b'\right)\right)\xi}\right).$$
(1)

Here,

$$\xi = 1 + \left(\frac{r_c}{r_w}\right)^2 \frac{i\omega r_w K_0(\beta r_w)}{2T\beta K_1(\beta r_w)},$$

$$\beta = \left(\frac{K'}{Tb'} + \frac{i\omega S}{T}\right)^{1/2}.$$
(2)



(a)

Depth (m)	Geologic age	Lithology	Observation layer	Description
0 - 400	Quaternary	[Yellow and grey horizontal bands]		Sandstone interbedded with mudstone
400 - 2685.5				
2685.5 - 3402.8	Tertiary	[Grey and black horizontal bands]		Siltstone interbedded with mudstone
3402.8 - 2600				
2600 - 2800				
2800 - 3000	Ordovician	[Blue brick pattern]		Limestone
3000 - 3200	Cambrian	[Blue brick pattern]		Limestone
3200 - 3400				

(b)

FIGURE 2: (a) Location of the North China Platform, the position of the groundwater well Gaocun (green triangle, GC: Gaocun), and the epicenters of the 2008 M_w 7.9 Wenchuan earthquake and the 2011 M_w 9.1 Tohoku earthquake (from Global CMT). The “beach balls” show the focal mechanism for the 2 huge earthquakes. Red lines indicate the surface faults [23]. (b) Well logs of Gaocun. The red lines and numbers indicate the depth of the observation aquifer (the screened section). For analyzing the impact of major rocks in the observation aquifer, we neglected those rocks with small amount (references: Seismic Monitoring Records of China; Seismological Press, Beijing, 2004 (in Chinese)).

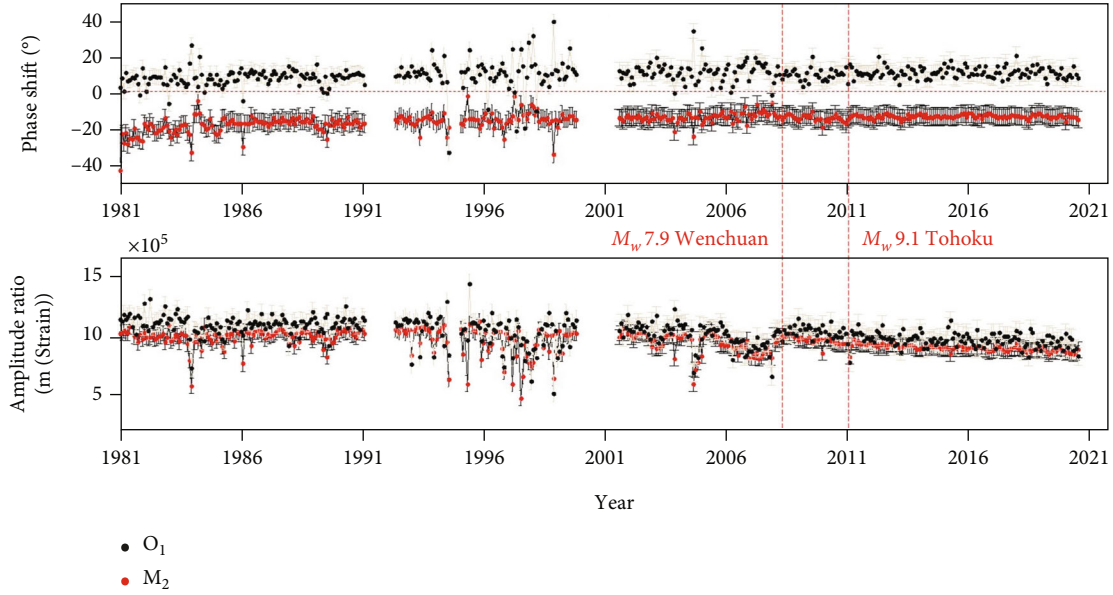


FIGURE 3: The phase responses over time (from January 1st, 1981, to May 9th, 2020) for well Gaocun at the M_2 wave (red dots) and O_1 wave (black dots) frequencies. The horizontal dashed line represents the 0° phase shifts, from which we can see the obviously separated M_2 and O_1 phase shifts. The vertical dashed lines represent the start time of the 2008 Wenchuan and the 2011 Tohoku huge earthquakes, which had not caused obvious influence on the phase shifts or the amplitude ratios. *We calculated the errors based on the data from Jan. 1st, 1981, to Dec. 31st, 1990 (which is relatively stable and continuous), and obtained the error of the phase shifts of the M_2 wave with 4.08° , while O_1 wave with 4.32° , and obtained the error of the amplitude ratios of the M_2 wave with 65400.07 (m/strain), while O_1 wave with 75700.15 (m/strain).

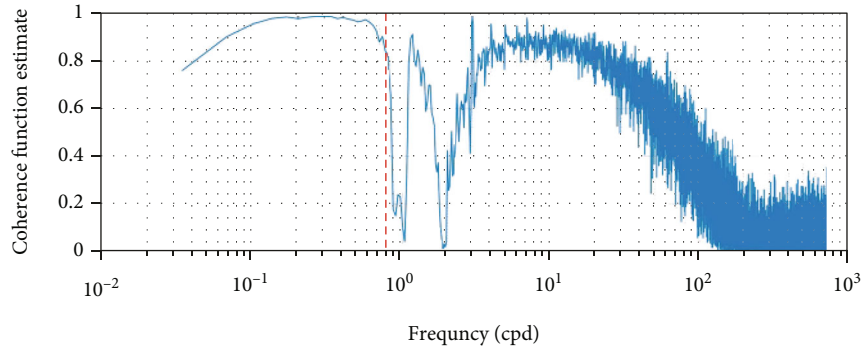


FIGURE 4: Coherence coefficient of the barometric pressure and the processed water level. Data series of January 1st, 2017, to December 31th, 2017, were used to do coherence analysis.

A' is the absolute amplitude ratio between the water level and solid-earth tides, η is the phase shift, \arg and abs are the angle and magnitude of complex numbers, ω is the circular frequency of the tidal wave, K' is the vertical hydraulic conductivity of the aquitard, T is the horizontal transmissivity of the aquifer, S is the storage coefficient of the aquifer, b' is the thickness of aquitard, r_c is the case radius, and r_w is the well radius. The subscripts M_2 and O_1 indicate the issues corresponding to the M_2/O_1 tidal frequencies.

Hence, 3 input parameters (A'_{M_2}/A'_{O_1} , η_{M_2} , and η_{O_1}) turn out 3 output parameters (S , T , and K'), which will be more stable [14]. Since the least squares fitting relies on the input initial testing values of T , S , and K' , the aquifer lithology (each lithol-

ogy has value spans for the hydraulic parameters [27]) and the aquitard lithology (reflect the vertical leakage extent K') are set as limitation conditions during the fitting processes. The detailed calculation processes are also introduced in Zhang et al. [14] and Yang et al. [12]. Briefly, during the non-linear, least squares inversion (Fsolve, <https://www.mathworks.com/help/optim/ug/fsolve.html>), the initial values are set as the constrain conditions for the results, thus the obtained S and T are constrained by the parameter ranges of the aquifer rocks, while K' is the vertical leakage of the fracture, thus need to be ≥ 0 as the constrain, and as the leakance term, K' should be relatively small according to the model setting of Wang et al. [9].

The analytical solution of the leaky model for well Gaocun is given in Figure 5. Finally, we obtained three parameters from

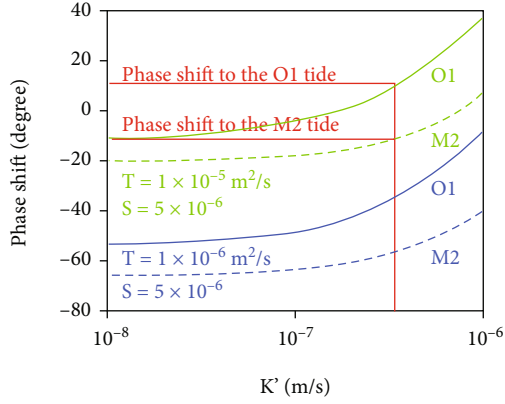


FIGURE 5: The analytical solution of the tidal response leaky model [9] for well Gaocun. According to the M_2 and O_1 phase shifts of this well, the most related analytical solution figure is chosen. * T , S , and K' are in accordance with the explanations in the succeeding figure.

the leaky model: the storage coefficient S and transmissivity T of the aquifer and the vertical conductivity K' of the aquitard (Figure 6). From Figure 6, we can see the vertical leakage occurred even since 1981, without any occurrence of earthquakes, and the leakage sustained for ~ 40 years, with the relatively stable vertical hydraulic conductivity (in accordance with the vertical permeability). Meanwhile, the horizontal transmissivity T (in accordance with the horizontal permeability) also shows a relatively stable value range but with a very small increase after the year 2001, which perhaps induced by unclogging of fracture clays (Figure 6). There is no trade-off problem of the parameters in the inversion, and the inversion is independent and without preassumptions. Detailed information and the process of solutions are explained in the previous paper [14].

Zhang et al. [14] have done a deeply comparison between the calculated value based on the tidal response leaky model and the laboratory value for 6 wells on the North China Platform, including well GC, which show the reasonability of those obtained parameters.

3.2. Parameters Obtained from the Barometric Response Leaky Model. As described in Sun and Xiang [17], the model of the barometric response of water level [15, 16] also could be used to calculate numerous parameters of the aquifer and aquitard, and thus, the vertical leakage parameters also could be testified and to do comparisons with the above parameters obtained from the leaky model.

Similar as the data processed by Sun and Xiang [17], we also used the time series of water level and barometric pressure of January 1st, 2017, to May 30th, 2019, to do analysis. As we analyzed, only model C [17] could be strictly applied to well Gaocun (Figure 7), indicating a semiconfined aquifer, which is different from the fitting of Sun and Xiang [17] since lower frequency domain fitting (0.01 cpd \sim 0.8 cpd) has been used in this study and is much more reasonable according to the coherence coefficient (Figure 4).

Before the calculation of the barometric response, the storage coefficient of aquifer S_{aqu} and the storage coefficient

of aquitard S_{con} need to be set in advance. The same as the dealing of Sun and Xiang [17], we also assigned $S_{\text{con}} = 10^{-4}$ [13, 15] and $S_{\text{aqu}} = n\gamma\beta L_{\text{aqu}}/BE$ [17, 28] calculated in Table 2; we set $n = 0.2$ (Table 2) in this study [17, 29], which is confirmed by the aquifer lithology (limestone), while γ is the weight density of water ($9.8 \times 10^3 \text{ N/m}^3$), β is the compressibility of water ($4.8 \times 10^{-10} \text{ m}^2/\text{N}$), and L_{aqu} is the thickness of the aquifer, respectively. During the least squares fitting, the initial values are set as the constrain conditions for the results, and thus, the obtained T is constrained by the parameter range of the aquifer rock, while K' is the vertical leakage of the fracture, thus needs to be ≥ 0 as the constraint (e.g., Sun and Xiang [17]). Therefore, the result of the vertical leakage of the aquitard K' and the horizontal transmissivity of the aquifer T obtained from the barometric response leaky model are close to the result obtained from the leaky model based on the tidal responses of water level (Table 2; Section 3.1).

4. Opposite Signs for the Phase Shifts of the M_2 and O_1 Tides Indicating Existing of Fractures

As studied by Hanson and Owen [30], the fracture orientation technique based on the tidal response of water level is an effective and convenient methodology which has no limitation of depth, and the fracture solutions of both natural and manually stimulated fractures can be obtained with static observation wells.

Traditionally, negative phase shifts indicate confined behavior (e.g., [5]) while positive phase shifts indicate unconfined behavior (e.g., [31]), but this is an oversimplification. The negative M_2 wave phase shifts led several researchers and engineers in the seismic prediction department of the China Earthquake Networks Center (CENC) to assume that the aquifer of the Gaocun well is confined fairly well. However, our findings indicated a very different situation. The opposite signs for the M_2 and O_1 responses (Figures 3 and 5) indicate substantial leakage (K' : $10^{-7}\sim 10^{-6}$ (m/s)) (Figure 5) in the analytical solution of the tidal response leaky model.

Meanwhile, as studied by Hanson and Owen [30], for a given vertical fracture, the O_1 and M_2 tides also display phase shifts with opposite signs. Similarly, the opposite signs for the phase shifts of the M_2 and O_1 tides can be explained by the fracture model of Bower [32], where the M_2 and O_1 responses are complementary with respect to the fracture strike and always have opposite signs under undrained conditions [32]. These support the robustness of the present conclusion that the inclined fracture exists in the aquitard of well Gaocun.

However, since the fracture model of Hanson and Owen [30] indicates a dry fracture without fluid or permeability, thus it is definitely different with the leaky model and could not be used to calculate the fault/fracture solutions in this paper.

5. Comparison between the Tidal/Barometric Response Leaky Models

5.1. Ideal Similar Assumptions of Those 2 Models. The tidal/barometric response leaky models are the 2-dimension

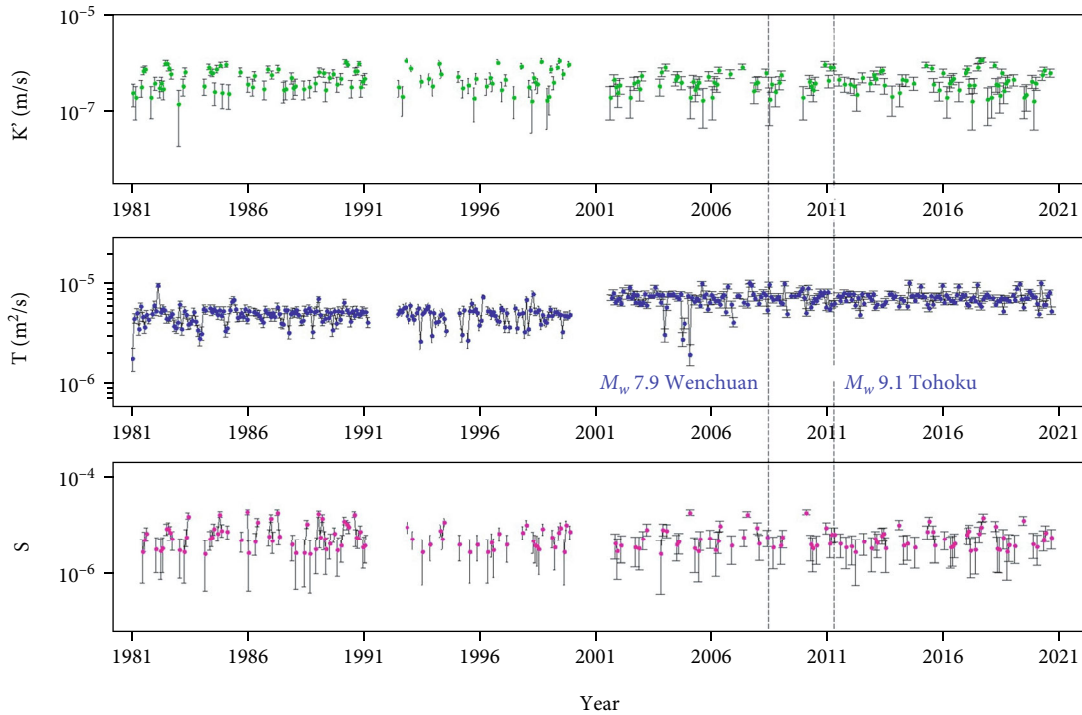


FIGURE 6: Inverted vertical hydraulic conductivity K' of the aquitard and the horizontal transmissivity T and storativity S of the aquifer from the leaky model of Wang et al. [9] for well Gaocun. The vertical dashed lines represent the start time of the 2008 Wenchuan and the 2011 Tohoku huge earthquakes, which caused no impact on those parameters. Some kick points induced by the unstable fitting perhaps incurred by the simplifications of the model assumptions (see Section 5.2) are neglected and not shown in the figure, which could disturb and obscure the dots in the figure. *We calculated the errors based on the data from January 1981 to December 1990 (which is relatively stable and continuous) and obtained the error of the hydraulic conductivity K' with 1.20×10^{-7} (m/s), that of the horizontal transmissivity T with 7.75×10^{-7} (m²/s) and the horizontal storativity S with 9.31×10^{-6} .

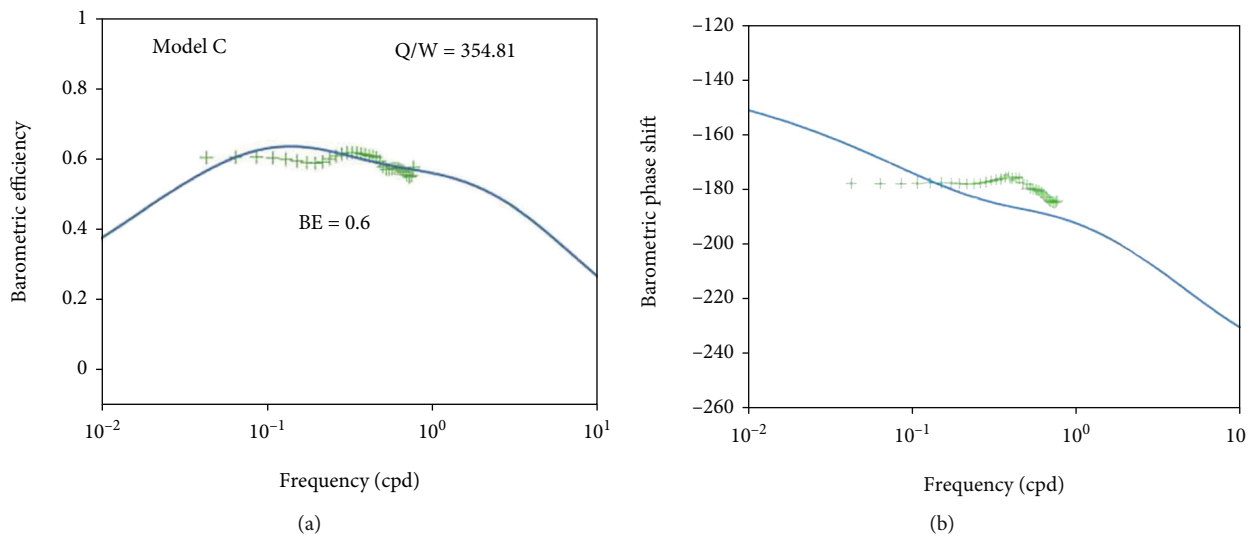


FIGURE 7: Fitting the (a) actual gain (barometric efficiency)- ω and (b) phase- ω curves calculated from the observed data of water level and barometric pressure with model C [17]. *In order to be in accordance with the result of Rojstaczer [15], the same as done by Zhang et al. [13], we reduced 180 degrees in the barometric phase shift.

TABLE 2: Parameter preset for the fitting of the barometric response with model C.

Model	Storage coefficient of aquifer S_{aqu}	Storage coefficient of aquitard S_{con}	Porosity of aquifer, n	BE
C	1.21E-03	1.00E-04	0.20	0.60

model with the vertical flow in the confining layer and the horizontal flow in the aquifer (Figure 8). The analytical solution of both models [9, 15] has inherent specific simplifications: the assumption of the isotropic and homogeneous aquifer and aquitard separately; the aquitard storage was negligible which indicates a time constant for the aquitard to attain hydraulic equilibrium short compared to the period of the tidal or the barometric forcing; none basement leakage, and thus, the bedrock should be seemed as more stable and impermeable compared to the other layers; periodic discharge of the well will not cause impact on the water table, and the well is a line source (for the leaky model [9], the pore pressure in the well is the same with different radii but with the same depth, thus line source).

However, in fact, some wells could not strictly meet with the rigorous assumptions and only could do rough estimations.

5.2. Same Analytical Solutions of Those 2 Models. For the best fitted model C, which equals to the aquifer with a semiconfined aquitard and neglecting the effect of the unsaturated zone [15, 17], the differential equation of the barometric response is obtained by Rojstaczer [15].

As summarized by Wang and Manga [19], for the semi-confined aquifer, the differential equation of the barometric response model (model C of Rojstaczer [15]) is the same as that of the tidal response leaky model [9]. In fact, the analytical solution of both the two models is derived from the solution of Hantush and Jacob [10], which is for aquifer response to pumping in the leakance condition, and the difference is the well discharges at a periodic rate and without a constant rate.

5.3. Different Sensing Frequency Domains for Those 2 Models. However, some conditions are very different for those 2 response models, which perhaps induced the minor differences of the vertical hydraulic conductivity K' of the confining layer and the horizontal transmissivity T of the aquifer (Tables 3 and 4).

For groundwater response to tidal strain, we mainly used the diurnal (O_1) (~ 0.93 cpd) and semidiurnal (M_2) (~ 1.93 cpd) tidal waves to do the calculation, while the barometric response model is mainly based on the fitting with the relatively low-frequency domain dots, since the coherence coefficient is only relatively high in 0.03 cpd ~ 0.8 cpd (Figure 4), and thus, the sensing frequency is very different, which perhaps induced the different results of calculations.

5.4. Merits and Disadvantages of Those 2 Models. From the leaky model with tidal response, a sequence of S , T , and K' varied with time could be obtained, and with the moving calculation time windows, the minimum continuous data of only

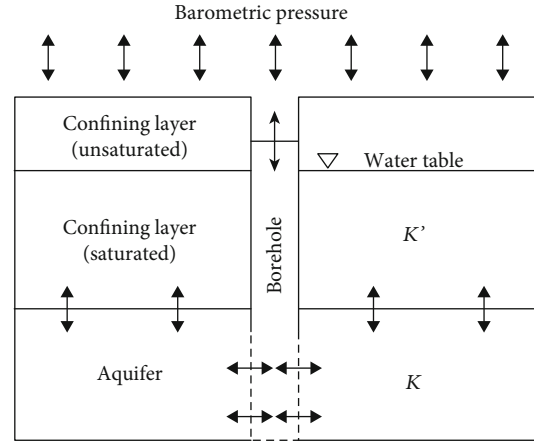


FIGURE 8: Sketch showing the groundwater flow in response to varied barometric pressure, modified from Wang and Manga [19]. K' is the vertical hydraulic conductivity of the aquitard, and K is the hydraulic conductivity of the aquifer.

15 days is needed. While based on the barometric response model, only one mean value of those parameters (T and K') could be obtained from the best fitting during a long-time span (at least ~ 60 -100-day continuous data to obtain one stable fitting value).

The value of the storativity of the aquifer S_{aqu} and aquitard S_{con} should be preset before the fitting and calculation with the barometric response model; thus, this calculation is not completely independent, and very probably the value of S_{aqu} could not be determined precisely since it might vary with time, although which would not cause obvious impactation on the results of the other parameters (e.g., [16]). Accordingly, the inverted specific storage based on the tidal response leaky model of Wang et al. [9] ($S_{\text{aqu}} \sim 10^{-6}$ (Table 3)) is much smaller than the laboratory obtained value $S_{\text{aqu}} = 10^{-4}$ to 10^{-3} ($S_s = 10^{-6}$ for limestone and $L_{\text{aqu}} = 717.3$ m for well Gaocun) [27]. The inconformity perhaps is induced by simplifications of the analytical model for the inversion [14], although this method is definitely independent or perhaps induced by the lack of the laboratory testing of more S values for different rocks, since it is not so important as the values of permeability.

Therefore, the model of Wang et al. [9] is more flexible (only need observation of water level and need not to set the observation of the barometric pressure), independent (need not to do value preset for the parameters such as S_{aqu} and S_{con}), and time continuity (could obtain time-varied sequences of parameters and could reflect the variations of parameters in relatively short time span (minimum time span ~ 15 days for one value)). However, this tidal response leaky model calls for the relatively small aquifer thickness (thickness of the aquifer should be smaller than that of the aquitard), and the vertical flow in the aquitard should be smaller than the horizontal flow in the aquifer thus could be treated as the leakance term [10].

Thus, both the 2 models have their merits and demerits and with the same analytical solution.

TABLE 3: Derived parameters from the mixed flow model.

Time period (year)	Vertical hydraulic conductivity of aquitard K' (m/s)		Horizontal transmissivity of aquifer T (m ² /s)		Storage coefficient of aquifer S_{aqu}	
	Average	Standard deviation	Average	Standard deviation	Average	Standard deviation
1981-1991	4.76E-07	1.14E-07	4.73E-06	4.52E-07	7.32E-06	2.29E-06
2011-2021	4.35E-07	1.11E-07	6.97E-06	4.97E-07	5.75E-06	1.35E-06

TABLE 4: Derived key parameters from model C of the barometric response.

Model	Horizontal transmissivity of aquifer T (m ² /s)	Vertical hydraulic conductivity K' (m/s)	Q/W (see [15])
C	1.11E-06	6.38E-08	354.81

6. Discussion

In layered aquifers, both phase lag and attenuation data might be used to estimate hydraulic parameters of the aquifer, and inconsistent results may be due to propagation bias [33]. However, both the tidal response and the barometric response leaky models are with only one layer of aquifer (homogeneous and isotropic), and thus, the layered aquifer model is definitely different, hence could not be used to do comparisons.

6.1. Impaction Factors for the Groundwater Decrease. Numerous of incidents could cause the water-level decrease of well Gaocun, such as groundwater exploitation-related pumping in the shallower layer and precipitation decrease. However, as shown in Figure 9, as recorded by Tianjin Water Resource Bulletin, the precipitation amount of Tianjin City does not show a decrease pattern and thus could be excluded as the reason of the water-level decrease.

Furthermore, previous studies indicate that groundwater depletion in North China Plain (NCP) is due to massive use of groundwater-based irrigation and the industry usage, and groundwater pumping caused the fall in the groundwater level and land subsidence (e.g., [34, 35]). The NCP includes one shallow unconfined aquifer (40–60 m) and three deep confined aquifers of different depths (120–170 m, 250–350 m, and 400–600 m) [35], and the groundwater exploitation in the North China is always above the depth of 400 m [36]. Hence, the aquifer of Gaocun well is much deeper (3400 m) than the pumping layers (<400 m); thus, pumping of the groundwater in shallow layers might induce the deep groundwater of well Gaocun (3400 m) to migrate up to the shallower layer through the vertical fractures in the aquitard induced by the high pore pressure of the deeper layer and so as to reach a new balanced state.

In addition, the study of Zhao et al. [37] indicates that the subsidence rates change severely in time and space (Figure 10) even in the same area of Tianjin. Therefore, the efforts to do the subsidence or groundwater exploitation statistics for the whole aquifer layer of well Gaocun or in the nearby megacities would be unrealistic and meaningless.

6.2. Reasonability of the Leaky Aquifer Model Encountering Pumping in the Shallower Layer. Firstly, the pumping/exploitation of the groundwater in the shallow layer primarily might induce the replenishment of the horizontal flow in the shallower layer and then might also induce the vertical migration of the deep groundwater, which could be very minor compared to the horizontal replenishment. Secondly, for the calculation of the tidal response leaky model, we distilled the O_1 (diurnal) and the M_2 (semidiurnal) tidal waves, through which the information of groundwater exploitation has been deleted already, except for those incidents with the same frequencies as the M_2 and O_1 waves, which rarely occurs. Therefore, we could still use the leaky model to deal with the leaky aquifer calculations under the circumstances of shallower layer pumping incidents in NCP.

6.3. Direct Pumping or Exploitation in the Observation Aquifer Layer or Downward Leakage Induced by Fractures of the Bedrock Is Not Considered Here. The GC well (aquifer depth: 2685.5 m~3402.8 m) is close to the BD well (aquifer depth: 210 m~427 m) in the horizontal projection (37.6 km apart). Figure 11 shows the original water level of well GC and well BD. Both the 2 wells are with vertical leakage as calculated by Zhang et al. [14], with the $K' \approx 10^{-5}$ (m/s) for well BD and $K' \approx 10^{-7}$ (m/s) for well GC. Obviously, the water level decreased in both the 2 wells but decreased more slowly in well BD than in well GC, which probably induced by the horizontal fluid supplement for the aquifer of well BD in the shallow layer by rivers or lakes. Since there is hardly supplement of the fluid in the ~3500 m deep aquifer, therefore, with the inclined-vertical fractures, the water level of well GC decreased more quickly than well BD.

Although it is well known that the Cambrian and Ordovician aquifer is also used for geothermal exploiting, as we investigated, there is no direct hydrothermal exploitation in the layer of the observation aquifer of well GC; as the government required, all those adjacent private hydrothermal exploitations also have been forbidden because of the ground subduction (Tianjin Geothermal exploration, Development and Design Institute); besides, most persons might think that with the

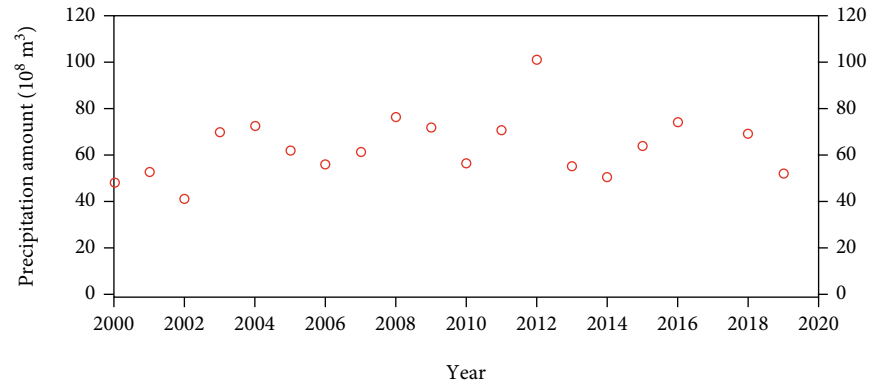


FIGURE 9: Precipitation amount of Tianjin City. Data comes from *Tianjin Water Resources Bulletin* (Ministry of Water Resources website), and only since the year 2000, there are available records online.

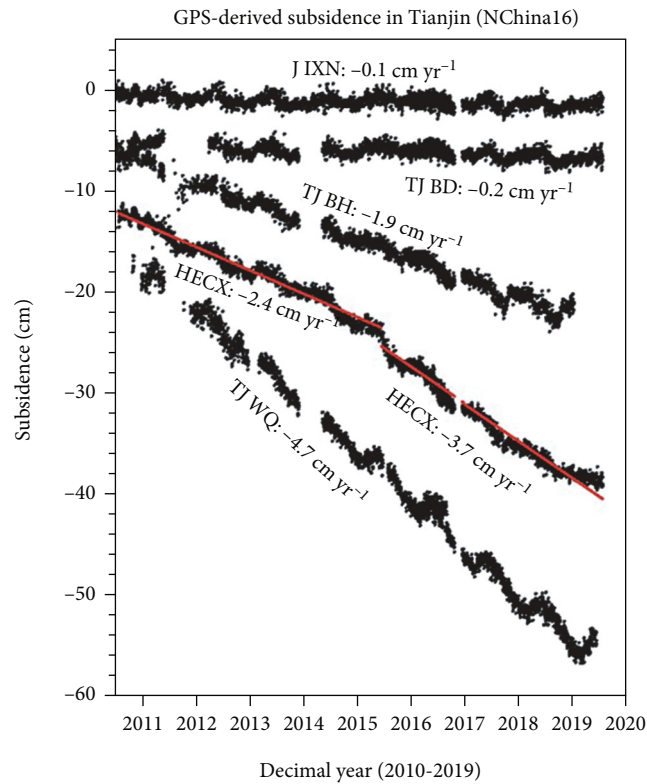


FIGURE 10: Subsidence recorded by 4 GPS stations (JIXN, TJBD, TJBH, and TJWQ) within one GPS station (HECC) adjacent to the Tianjin City from the year 2011 to 2020 [37].

gravity, the water should leak downward; however, as in the research region of hydrology, there is the basic rock (most likely granite and those tough rock) as the bottom layer of the aquifer for each well, which could be seemed to be without leakage. Thus, with the high temperature and high pore pressure in the deep aquifer, leaking only assumed to occur upward to the above confining layer.

Therefore, direct pumping or exploitation in the observation aquifer layer or downward leakage induced by fractures

of the bedrocks is not considered here in both the 2 models (tidal response leaky model and barometric response leaky model), which will make things much complex and different.

6.4. *Cautions for the Application of Those 2 Models (Tidal Response Leaky Model and Barometric Response Leaky Model).* Caution also should be exercised in the interpretation of the inverted hydraulic parameters with both of the 2 models because both have set numerous ideal simplified assumptions

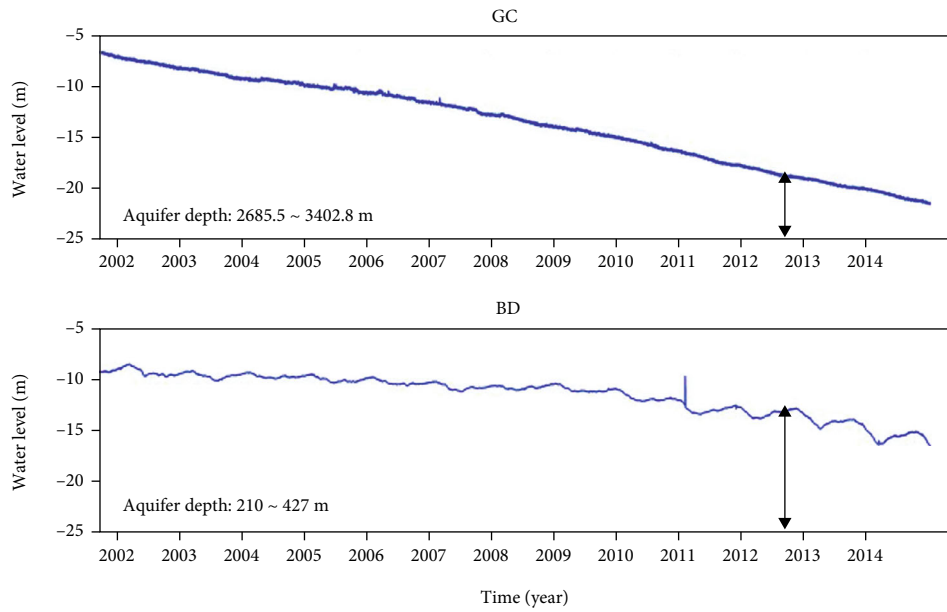


FIGURE 11: The original water level of well GC and well BD (the above shallower layer) during the years 2002~2015 shows a decreasing pattern. The y-coordinate numbers indicate the distance between the water head and the ground.

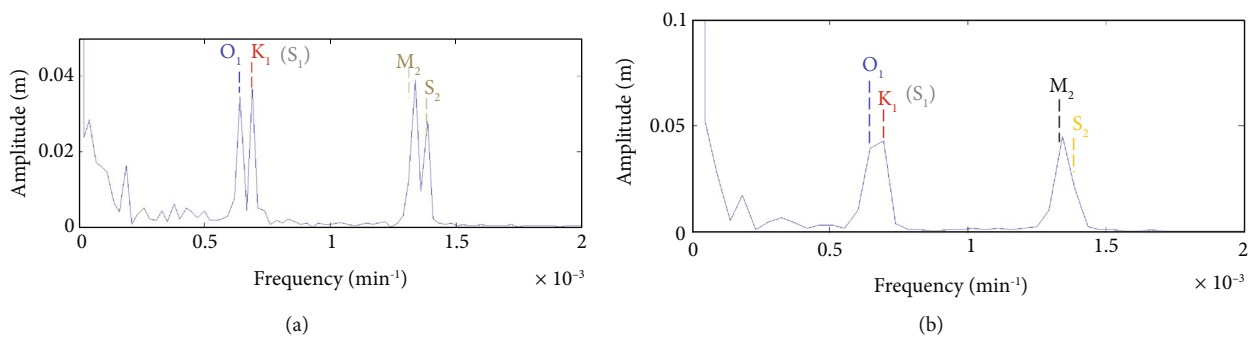


FIGURE 12: (a) Spectrum analysis of a time series of 27.95 days. (b) Spectrum analysis of a time series of 15 days (both with data before occurrence of the 2008 Wenchuan earthquake).

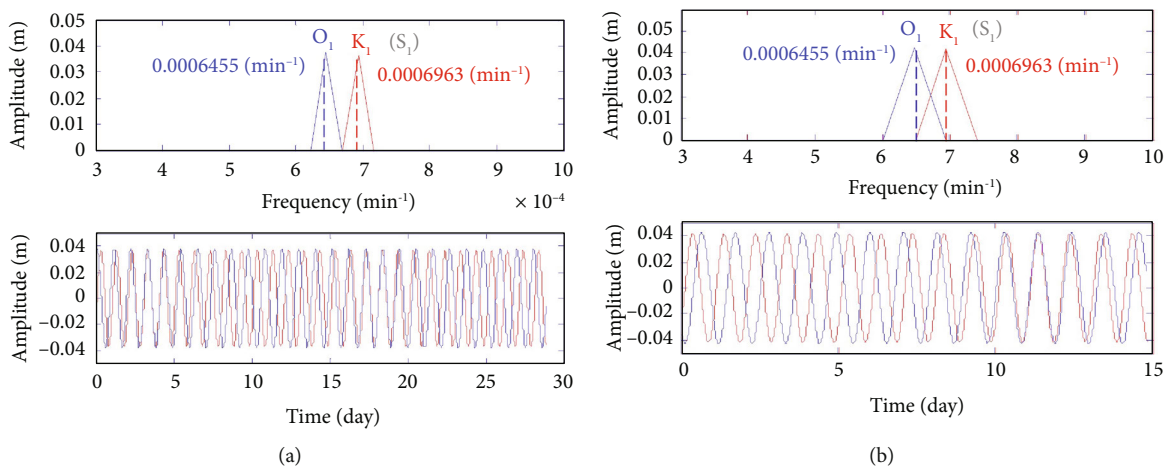


FIGURE 13: (a) Above: distilled O_1 (blue) and K_1 (red) spectra with a time series of 27.95 days. Below: IFFT of the distilled O_1 (blue) and K_1 (red) tides. (b) Above: distilled O_1 (blue) and K_1 (red) spectra with a time series of 15 days. Below: IFFT of the distilled O_1 (blue) and K_1 (red) tides.

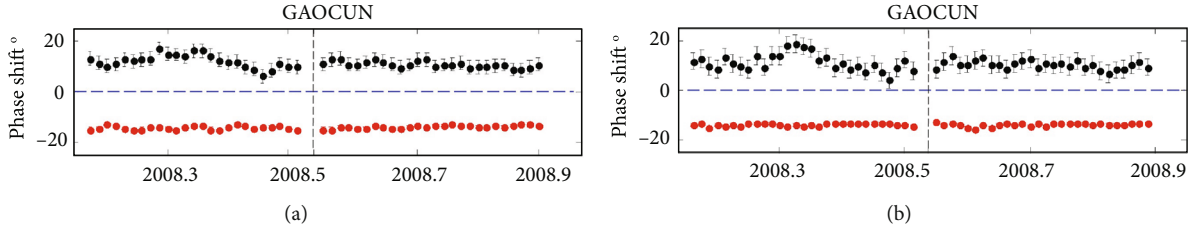


FIGURE 14: Phase shift to the O_1 (black dots)/ M_2 (red dots) tide of water level in the Gaocun well calculated with a moving time window of (a) 27.95/29.5 days and (b) 15 days. The dashed lines indicate the occurrence time of the 2008 M_w 7.9 Wenchuan earthquake.

(Ideal Similar Assumptions of Those 2 Models). Those ideal simplifications might induce some inversions to be unstable, such as kick points in Figure 6 and biased fitting in Figure 7(b).

Numerical simulation developed by Zhu and Wang [20] indicated that leakage of the basement and aquitard storage has significant impacts on the tidal response of borehole water level and the neglect of those factors in the analytical solution [9] could have undervalued the aquifer leakage.

7. Conclusion

For the first time, we did a detailed systematic comparison between the leaky models of the tidal response and the barometric response of water level, which indicates a consistency leaky result. Besides, we analyzed the merits and demerits of both the 2 models. With the confirmation of the existing of fractures and especially with the obtained K' calculated from both the tidal and the barometric response models, we verify that well Gaocun has a sustained obvious vertical leakage in the aquitard for ~ 40 years, under the assumptions of the none-leaking bottom layer and none direct pumping or exploiting in the observation aquifer layer.

Appendix

A. Distilling the O_1 and M_2 Waves with a Moving Time Window of 15 Days

The M_2 and O_1 waves need to be distilled with the same moving time window to facilitate comparison over the same time span. Spectral leakage between the M_2 (~ 0.0013419 circle/min) and S_2 (~ 0.0013889 circle/min) tides and between the O_1 (~ 0.0006455 circle/min) and K_1 (~ 0.0006963 circle/min) (S_1) tides poses challenges for data analysis. Generally, the minimum time window separating the frequencies of the M_2 and S_2 tides in the frequency spectrum (i.e., two separate peaks) is set to be 29.5036 days (e.g., [26, 38]). Meanwhile, 15 days are also proved to be suitable and reasonable (Appendix A in [26]). However, the frequencies of the O_1 and K_1 (S_1) tides cannot be separated over the same time window of 29.5036 days [26].

Similar to Appendix A of Zhang et al. [26], we found that both the O_1 and M_2 waves could be distilled precisely with a moving time window of 15 days (or 30 days). Time series for water level in wells always have transitions, missing data, or interruptions (Figure 1). Thus, continuous water-level data with the same trend do not cover a sufficiently long time. A moving time window of 15 days is a relatively

short time span that could reflect variations in the permeability more precisely.

Separation of the O_1 and K_1 tidal waves is as follows.

Tidal response analysis requires a frequency division:

$$df = \frac{f_s}{N} = \frac{1}{t}, \quad (\text{A.1})$$

where df is the frequency difference, f_s is the sampling frequency, N is the sampling points, and t is the sampling time [39]. The sampling frequency f_s is 1 circle/min for the water level and Earth's solid tides in this paper.

To separate the O_1 and K_1 waves in the frequency spectrum (i.e., distinguish two wave peaks) (Figure 12(a)) and avoid spectral leakage (i.e., adjacent waves should be recorded integrally), df should be half the frequency difference $df = (0.0006963 - 0.0006455)/2 = 2.54 \times 10^{-5}$ circle/min. In addition, the corresponding time window should be greater than or equal to $T = 1/df = 27.34$ days. The greatest common divisor for the frequencies of the O_1 and K_1 waves also needs to be calculated. With a calculated frequency of $\leq 2.54 \times 10^{-5}$ circle/min, the accurate period should be 27.95 (27.9528) days ($df = 2.4843 \times 10^{-5}$ circle/min), and then, the spectra of the O_1 ($0.0006455/(2.4843 \times 10^{-5}) = 25.9827 \approx 26$) tide and K_1 ($0.0006963/(2.4843 \times 10^{-5}) = 28.0275 \approx 28$) tide are definitely separated and recorded integrally.

For the time window of 15 days ($df \approx 4.630 \times 10^{-5}$ circle/min), frequencies of the O_1 , K_1 , M_2 , and S_2 waves are approximate to be integral multiples of df (O_1 : $[0.0006455/(4.630 \times 10^{-5}) = 13.9417 \approx 14]$, K_1 : $[0.0006963/(4.630 \times 10^{-5}) = 15.0388 \approx 15]$, M_2 : $[0.0013419/(4.630 \times 10^{-5}) = 28.9827 \approx 29]$, and S_2 : $[0.0013889/(4.630 \times 10^{-5}) = 30]$). Thus, the main information of those waves has been recorded.

A.1. To Distill the O_1/K_1 Waves with Time Windows of 27.95 Days and 15 Days. All explanations are similar to the separation of the M_2 - S_2 waves with the time windows of 29.5036 days and 15 days in Appendix A of Zhang et al. [26], in which there are also similar figures as Figures 12 and 13. Thus, the O_1/K_1 waves are separated and can be distilled in the filter window. Hence, the result from a moving time window of 15 days is similar to that from the window of 27.95 days in the frequency domain (Figure 13).

A.2. Comparison between the O_1/M_2 Waves Distilled from 27.95/29.5 and 15 Days in the Time Domain. Here, we compare the O_1/M_2 waves distilled from 27.95/29.50 days (Figure 14(a))

and 15 days (Figure 14(b)) based on the data of Gaocun well before and after the 2008 Wenchuan earthquake. The results are similar. Thus, similar to the distillation of the M_2 wave, the 15-day time window can also be used to distill the O_1 wave.

Data Availability

The groundwater level data used in the analysis were from the Groundwater Monitoring Network of the China Earthquake Networks Center (CENC), which can be accessed from WDC for Geophysics, Beijing (<http://wdc.geophys.ac.cn>, doi:10.12197/2021GA001).

Conflicts of Interest

The authors declare that they have no conflicts of interest.

Acknowledgments

We thank Professor Feng-ling Niu, Rui Yan, and Chi-yuen Wang for their help and discussions. This research was supported by the National Natural Science Foundation of China (Grant Numbers 41874161 and 42141009), the Youth Innovation Promotion Association Foundation of the Chinese Academy of Sciences (Grant Number 2019069), and the China Postdoctoral Science Foundation (Grant Number 2022M713473).

References

- [1] US Environmental Protection Agency, *Hydraulic Fracturing for Oil and Gas: Impacts from the Hydraulic Fracturing Water Cycle on Drinking Water Resources in the United States*, vol. 236, US Environmental Protection Agency, Washington, DC, USA, 2016.
- [2] M. Weingarten, S. Ge, J. W. Godt, B. A. Bekins, and J. L. Rubinstein, "High-rate injection is associated with the increase in U.S. mid-continent seismicity," *Science*, vol. 348, no. 6241, pp. 1336–1340, 2015.
- [3] F. R. Walsh and M. D. Zoback, "Oklahoma's recent earthquakes and saltwater disposal," *Advances*, vol. 1, no. 5, 2015.
- [4] S. M. Benson and D. R. Cole, "CO₂ sequestration in deep sedimentary formations," *Elements*, vol. 4, no. 5, pp. 325–331, 2008.
- [5] P. A. Hsieh, J. D. Bredehoeft, and J. M. Farr, "Determination of aquifer transmissivity from Earth tide analysis," *Water Resources Research*, vol. 23, no. 10, pp. 1824–1832, 1987.
- [6] M. L. Doan, E. E. Brodsky, R. Prioul, and C. Signer, "Tidal analysis of borehole pressure—a tutorial," *University of California, Santa Cruz*, vol. 25, p. 27, 2006.
- [7] E. A. Roeloffs, "Persistent water level changes in a well near Parkfield, California, due to local and distant earthquakes," *Journal of Geophysical Research*, vol. 103, no. B1, pp. 869–889, 1998.
- [8] D. L. Galloway and S. A. Rojstaczer, "Inferences about formation elastic and fluid flow properties from the frequency response of water levels to atmospheric loads and earth tides: 4th Canadian," in *American Conference on Hydrogeology: Fluid Flow, Heat Transfer and Mass Transport in Fractured Rocks*, pp. 100–113, Banff, Alberta, Canada, 1988.
- [9] C. Y. Wang, M. L. Doan, L. Xue, and A. J. Barbour, "Tidal response of groundwater in a leaky aquifer—application to Oklahoma," *Water Resources Research*, vol. 54, no. 10, pp. 8019–8033, 2018.
- [10] M. S. Hantush and C. E. Jacob, "Non-steady Green's functions for an infinite strip of leaky aquifer," *Transactions of the American Geophysical Union*, vol. 36, no. 1, p. 101, 1955.
- [11] M. Cardiff, M. Barrash, and P. K. Kitanitis, "Hydraulic conductivity imaging from 3D transient hydraulic tomography at several pumping/observation densities," *Water Resources Research*, vol. 49, no. 11, pp. 7311–7326, 2013.
- [12] Q. Y. Yang, Y. Zhang, L. Y. Fu, Y. C. Ma, and J. H. Hu, "Vertical leakage occurred after an earthquake: suggestions for utilizing the mixed flow model," *Lithosphere*, vol. 2021, no. Special 3, 2021.
- [13] H. Zhang, Z. Shi, G. Wang, X. Sun, R. Yan, and C. Liu, "Large earthquake reshapes the groundwater flow system: insight from the water-level response to earth tides and atmospheric pressure in a deep well," *Water Resources Research*, vol. 55, no. 5, pp. 4207–4219, 2019.
- [14] Y. Zhang, C.-Y. Wang, L.-Y. Fu, and Q.-Y. Yang, "Are deep aquifers really confined? Insights from deep groundwater tidal responses in the North China Platform," *Water Resources Research*, vol. 57, no. 11, 2021.
- [15] S. Rojstaczer, "Determination of fluid flow properties from the response of water levels in wells to atmospheric loading," *Water Resources Research*, vol. 24, no. 11, pp. 1927–1938, 1988.
- [16] M. E. Hussein, N. E. Odling, and R. A. Clark, "Borehole water level response to barometric pressure as an indicator of aquifer vulnerability," *Water Resources Research*, vol. 49, no. 10, pp. 7102–7119, 2013.
- [17] X. L. Sun and Y. Xiang, "Comparison of transfer function models for well-aquifer system response to atmospheric loading," *Journal of Hydrology*, vol. 590, article 125494, 2020.
- [18] N. E. Odling, R. Perulero Serrano, M. E. A. Hussein, M. Riva, and A. Guadagnini, "Detecting the vulnerability of groundwater in semi-confined aquifers using barometric response functions," *Journal of Hydrology*, vol. 520, no. 2015, pp. 143–156, 2015.
- [19] C. Y. Wang and M. Manga, *Water and Earthquakes*, Springer-Nature, 2021.
- [20] A. Y. Zhu and C. Y. Wang, "Response of leaky aquifers to Earth tides - interpreted with numerical simulation," *Journal of Hydrology*, vol. 581, article 124458, 2020.
- [21] X. L. Sun, Z. Shi, and Y. Xiang, "Frequency dependence of in situ transmissivity estimation of well-aquifer systems from periodic loadings," *Water Resources Research*, vol. 56, no. 11, 2020.
- [22] C. Beaumont and J. Berger, "An analysis of tidal strain observations from the United States of America: I. the laterally homogeneous tide," *Bulletin of the Seismological Society of America*, vol. 65, no. 6, pp. 1613–1629, 1975.
- [23] Q. D. Deng, P. Z. Zhang, and Y. K. Ran, *Distribution of Active Faults in China, 1:4000000*, Science Press, Beijing, China, 2004.
- [24] Y. Z. Lu, S. L. Li, Z. H. Deng, H. W. Pan, S. Che, and Y. L. Li, *Seismology Analysis and Prediction System Based on GIS, Mapseis Software*, Chengdu Map Press, Chengdu, China, 2002.
- [25] A. J. Barbour, L. Xue, E. Roeloffs, and J. L. Rubinstein, "Leakage and increasing fluid pressure detected in Oklahoma's

- wastewater disposal reservoir,” *Journal of Geophysical Research: Solid Earth*, vol. 124, no. 3, pp. 2896–2919, 2019.
- [26] Y. Zhang, C. Y. Wang, L. Y. Fu, B. Zhao, and Y. Ma, “Unexpected far-field hydrological response to a great earthquake,” *Earth and Planetary Science Letters*, vol. 519, pp. 202–212, 2019.
- [27] H. F. Wang, *Theory of Linear Poroelasticity with Applications to Geomechanics and Hydrogeology, vol. 2*, Princeton University Press, 2000.
- [28] C. E. Jacob, “On the flow of water in an elastic artesian aquifer,” *Eos, Transactions American Geophysical Union*, vol. 21, no. 2, pp. 574–586, 1940.
- [29] A. R. Jumikis, *Rock Mechanics*, Gulf Publishing Co., Houston, TX, USA, 1983.
- [30] J. M. Hanson and L. B. Owen, “Fracture orientation analysis by the solid earth tidal strain method,” in *SPE Annual Technical Conference and Exhibition*, 1982.
- [31] E. Roeloffs, “Poroelastic techniques in the study of earthquake-related hydrologic phenomena,” in *Advances in Geophysics*, pp. 135–195, Elsevier, 1996.
- [32] D. R. Bower, “Bedrock fracture parameters from the interpretation of well tides,” *Journal of Geophysical Research: Solid Earth*, vol. 88, no. B6, pp. 5025–5035, 1983.
- [33] M. Trefry and E. Bekele, “Structural characterization of an island aquifer via tidal methods,” *Water Resources Research*, vol. 40, no. 1, 2004.
- [34] W. Feng, M. Zhong, J.-M. Lemoine, R. Biancale, H.-T. Hsu, and J. Xia, “Evaluation of groundwater depletion in North China using the Gravity Recovery and Climate Experiment (GRACE) data and ground-based measurements,” *Water Resources Research*, vol. 49, no. 4, pp. 2110–2118, 2013.
- [35] Y. Sakura, C. Tang, R. Yoshioka, and H. Ishibashi, “Intensive use of groundwater in some areas of China and Japan,” in *Intensive Use of Groundwater: Challenges and Opportunities*, M. R. Llamas and E. Custodio, Eds., Balkma, Rotterdam, Netherlands, 2003.
- [36] H. F. Yang, W. G. Cao, C. S. Zhi et al., “Evolution of groundwater level in the North China plain in the past 40 years and suggestions on its overexploitation treatment,” *Geology in China*, vol. 48, no. 4, pp. 1142–1155, 2021.
- [37] R. Zhao, G. Wang, X. Yu et al., “Rapid land subsidence in Tianjin, China derived from continuous GPS observations, 2010–2019,” *Proceedings of the International Association of Hydrological Sciences*, vol. 382, pp. 241–247, 2020.
- [38] V. Allègre, E. E. Brodsky, L. Xue, S. M. Nale, B. L. Parker, and J. A. Cherry, “Using earth-tide induced water pressure changes to measure in situ permeability: a comparison with long-term pumping tests,” *Water Resources Research*, vol. 52, no. 4, pp. 3113–3126, 2016.
- [39] J. G. Proakis and D. G. Manolakis, “Digital signal processing-principles, algorithms & applications fourth edition,” *Publishing House of Electronics Industry*, vol. 2014, p. 284, 2014.