



Current Data Parameters
NAME Dr Shajari
EXPNO 87
PROCNO 1

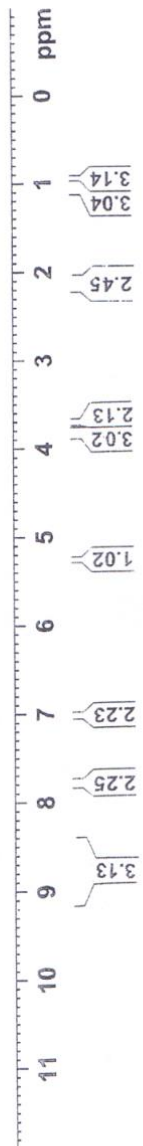
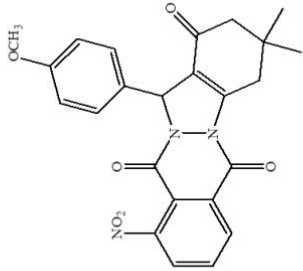
F2 - Acquisition Parameters

Date 20170701
Time 8.11
INSTRUM spect
PROBHD 5 mm Multinucl
PULPROG zg
TD 16384
SOLVENT DMSO
NS 20
DS 0
SWH 4990.020 Hz
FIDRES 0.304567 Hz
AQ 1.6417269 sec
RG 32
DW 100.200 usec
DE 6.00 usec
TE 300.0 K
D1 2.00000000 sec

==== CHANNEL f1 =====
NUC1 1H
P1 9.00 usec
PL1 3.00 dB
SFO1 250.1317509 MHz

F2 - Processing parameters
SI 32768
SF 250.1300000 MHz
WDW EM
SSB 0
LB 1.00 Hz
GB 0
PC 1.00

0.961
1.000
2.069
2.234
2.326
2.476
2.593
3.361
3.646
3.799
5.255
7.007
7.040
7.672
7.714
7.768
7.801
8.496
8.601
8.798
8.822





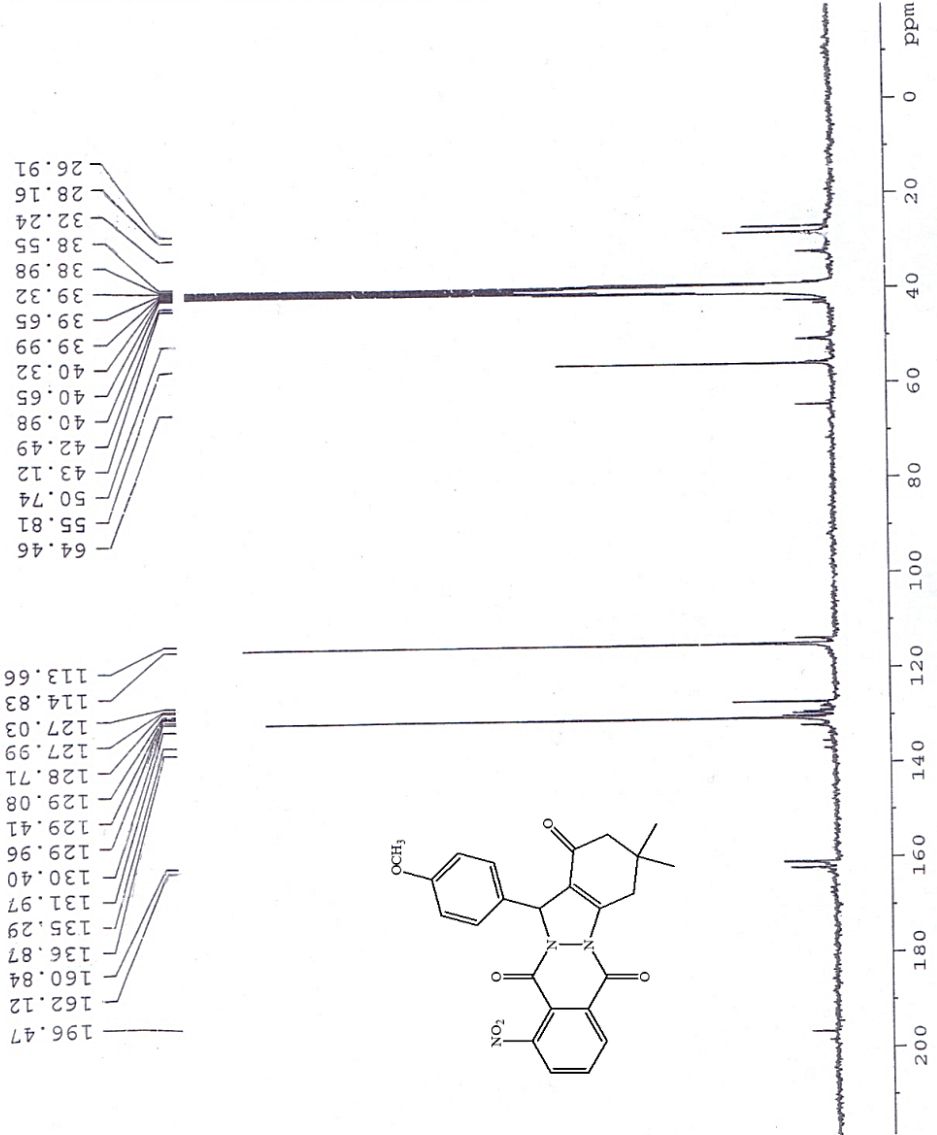
Current Data Parameters
 NAME Dr Shajari
 EXPNO 90
 PROCNO 1

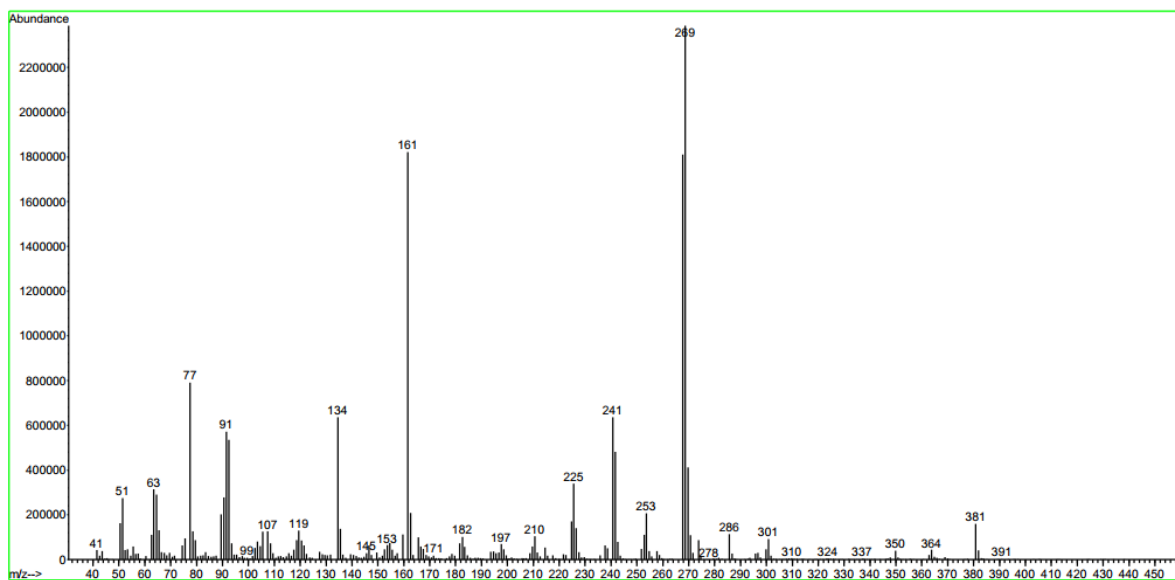
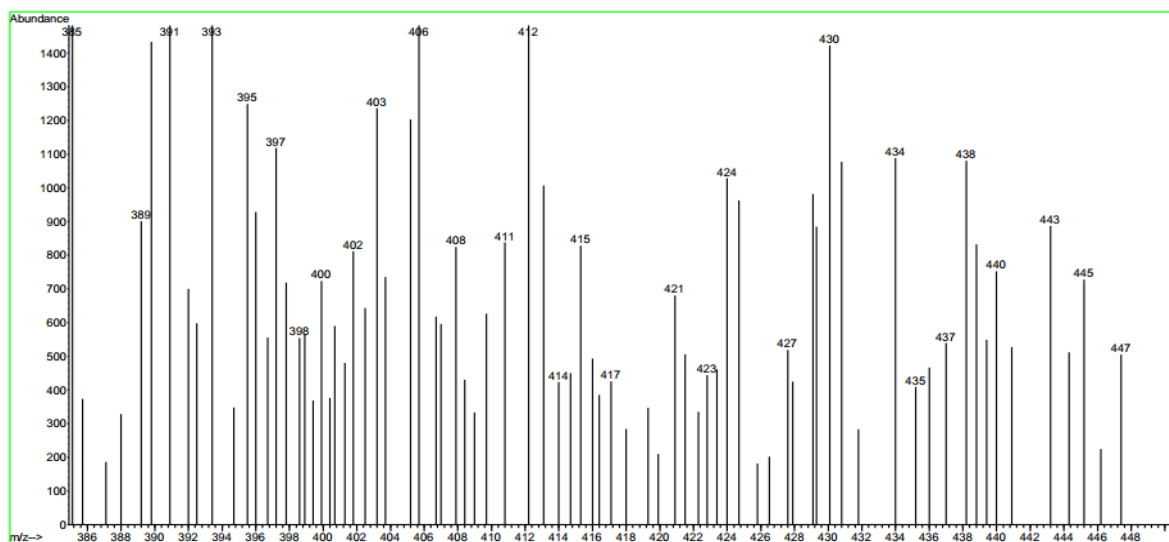
F2 - Acquisition Parameters
 Date_ 20170704
 Time_ 4.08
 INSTRUM spect
 PROBHD 5 mm Multinucl
 PULPROG zgpg
 TD 65536
 SOLVENT DMSO
 NS 11000
 DS 0
 SWH 15060.241 Hz
 FIDRES 0.229801 Hz
 AQ 2.1758451 sec
 RG 1625.5
 DW 33.200 usec
 DE 6.00 usec
 TE 300.0 K
 D1 2.00000000 sec
 d11 0.03000000 sec
 d12 0.00002000 sec

===== CHANNEL f1 =====
 NUC1 13C
 P1 10.00 usec
 PL1 0.00 dB
 SF01 62.9015280 MHz

===== CHANNEL f2 =====
 CPDPRG2 waltz16
 NUC2 1H
 PCPD2 80.00 usec
 PL2 3.00 dB
 PL12 21.50 dB
 PL13 23.00 dB
 SFO2 250.1310005 MHz

F2 - Processing Parameters
 SI 32768
 SF 62.8952390 MHz
 WDW EM
 SSB 0
 LB 3.00 Hz
 GB 0
 FC 1.40







Current Data Parameters
NAME Dr Shajari
EXPNO 81
PROCNO 1

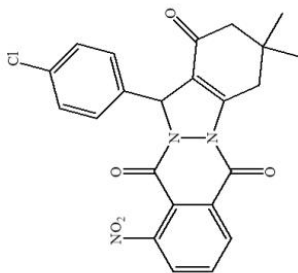
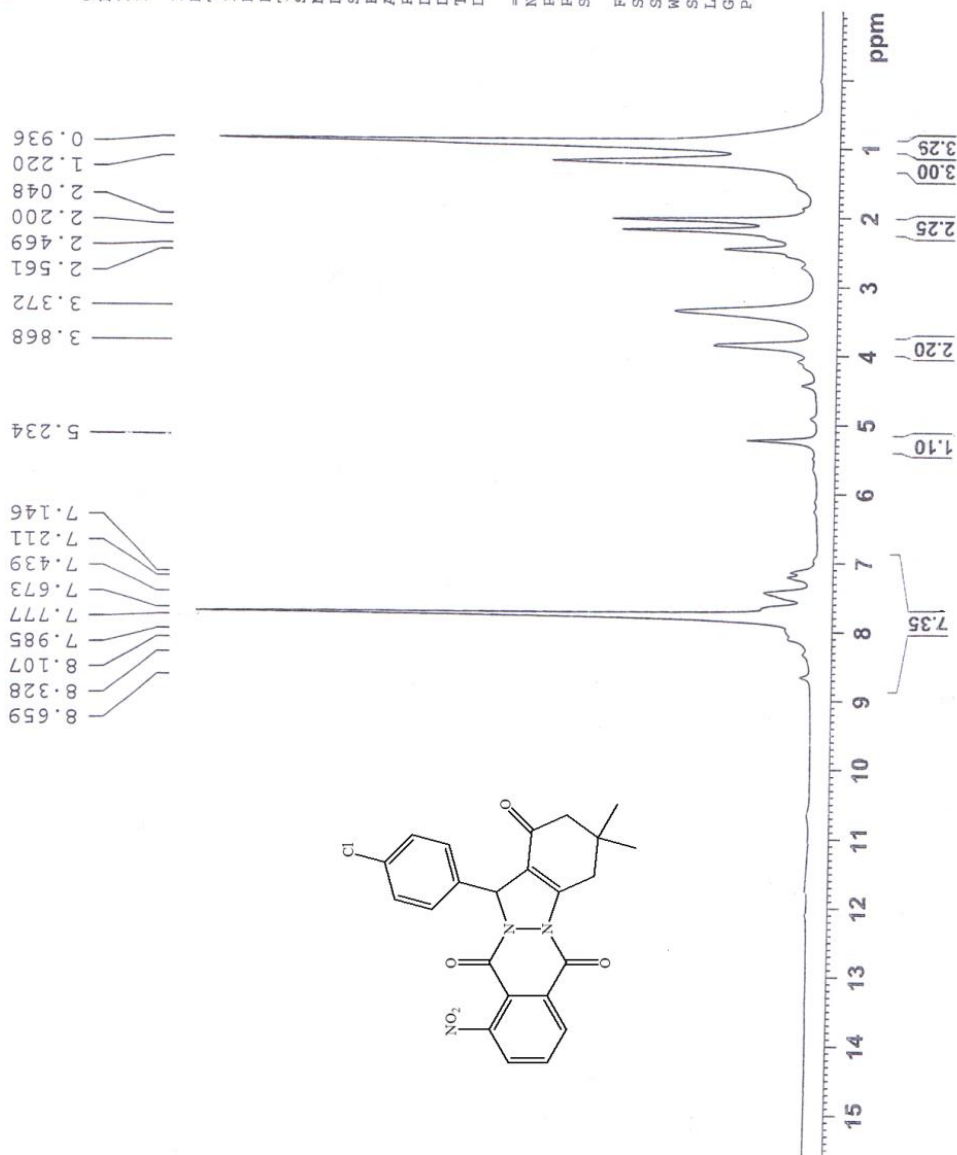
F2 - Acquisition Parameters

Date_ 20170531
Time 9.34
INSTRUM spect
PROBHD 5 mm Multinucl
PULPROG zg
TD 16384
SOLVENT DMSO
NS 20
DS 0
SWH 4990.020 Hz
FIDRES 0.304567 Hz
AQ 1.6417269 sec
RG 32
DW 100.200 usec
DE 6.00 usec
TE 300.0 K
D1 2.0000000 sec

==== CHANNEL f1 =====
NUC1 1H
P1 9.00 usec
PL1 3.00 dB
SFO1 250.1317509 MHz

F2 - Processing parameters

SI 32768
SF 250.1300000 MHz
WDW EM
SSB 0
LB 1.00 Hz
GB 0
PC 1.00





Current Data Parameters
 NAME Dr Shajari
 EXPNO 82
 PROCNO 1

F2 - Acquisition Parameters

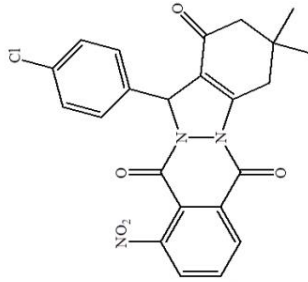
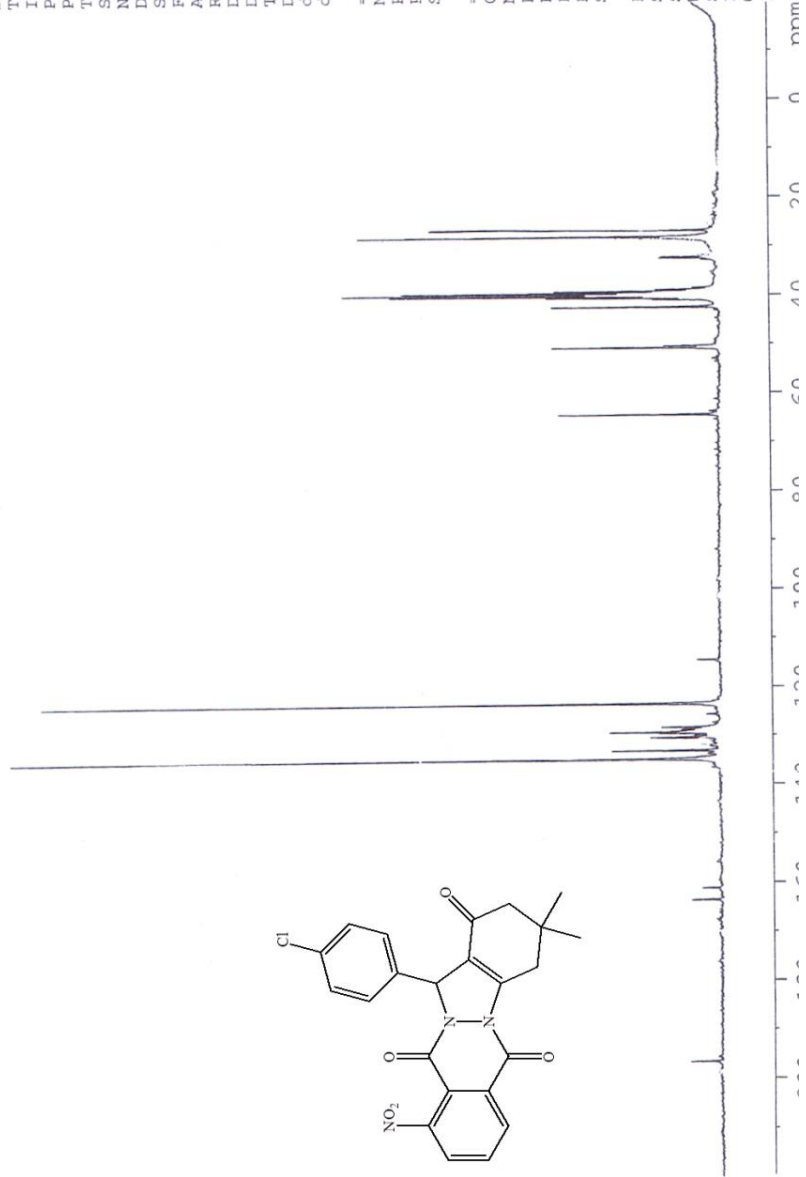
Date_ 20170606
 Time 0.10
 INSTRUM spect
 PROBHD 5 mm Multinucl
 PULPROG zgpg3
 TD 65536
 SOLVENT DMSO
 NS 11000
 DS 0
 SWH 15060.241 Hz
 FIDRES 0.229801 Hz
 AQ 2.1758451 sec
 RG 1625.5
 DW 33.200 usec
 DE 6.00 usec
 TE 300.0 K
 D1 2.00000000 sec
 d11 0.03000000 sec
 d12 0.00002000 sec

==== CHANNEL f1 =====
 NUC1 13C
 P1 10.00 usec
 PL1 0.00 dB
 SFO1 62.9015280 MHz

==== CHANNEL f2 =====
 CPDPRG2 waltz16
 NUC2 1H
 PCPD2 80.00 usec
 PL2 3.00 dB
 PL12 21.50 dB
 PL13 23.00 dB
 SFO2 250.1310005 MHz

F2 - Processing parameters
 SI 32768
 SF 62.8952390 MHz
 WDW EM
 SSB 0
 LB 3.00 Hz
 GB 0
 PC 1.40

26.82
 28.12
 32.45
 38.51
 38.90
 39.23
 39.56
 39.90
 39.90
 40.23
 40.23
 40.56
 40.89
 42.43
 50.68
 64.45
 114.38
 123.32
 128.22
 128.67
 128.90
 129.07
 129.26
 129.46
 129.89
 130.34
 133.01
 133.01
 134.70
 161.00
 163.41
 196.43





Current Data Parameters
NAME Dr Shajari
EXPNO 83
PROCNO 1

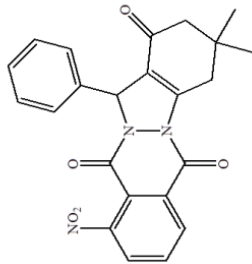
F2 - Acquisition Parameters

Date_ 20170625
Time 7.24
INSTRUM spect
PROBHD 5 mm Multinucl
PULPROG zg
TD 16384
SOLVENT DMSO
NS 20
DS 0
SWH 4990.020 Hz
FIDRES 0.304567 Hz
AQ 1.6417269 sec
RG 32
DW 100.200 usec
DE 6.00 usec
TE 300.0 K
D1 2.00000000 sec

==== CHANNEL f1 =====
NUC1 1H
PI 9.00 usec
PL1 3.00 dB
SFO1 250.1317509 MHz

F2 - Processing parameters
SI 32768
SF 250.1300000 MHz
WDW EM
SSB 0
LB 1.00 Hz
GB 0
PC 1.00

7.364
7.419
7.492
7.664
7.780
7.863
8.345
8.361
8.694
5.261
3.921
3.896
3.871
3.330
2.478
2.234
2.172
2.144
2.073
1.244
0.964





Current Data Parameters
NAME Dr Shajari
EXPNO 84
PROCNO 1

F2 - Acquisition Parameters

Date_ 20170625
Time_ 4.02
INSTRUM spect
PROBHD 5 mm Multinucl
PULPROG zgpg
TD 65536
SOLVENT DMSO
NS 11000
DS 0
SWH 15060.241 Hz
FIDRES 0.229801 Hz
AQ 2.1758451 sec
RG 1625.5
DM 33.200 usec
DE 6.00 usec
TE 300.0 K
D1 2.00000000 sec
d11 0.03000000 sec
d12 0.00002000 sec

==== CHANNEL f1 =====
NUC1 13C
P1 10.00 usec
PL1 0.00 dB
SFO1 62.9015280 MHz

==== CHANNEL f2 =====
CPDPRG2 waltz16
NUC2 1H
PCPD2 80.00 usec
PL2 3.00 dB
PL12 21.50 dB
PL13 23.00 dB
SFO2 250.1310005 MHz

F2 - Processing parameters
SI 32768
SF 62.8952390 MHz
WDW EM
SSB 0
LB 3.00 Hz
GB 0
PC 1.40

