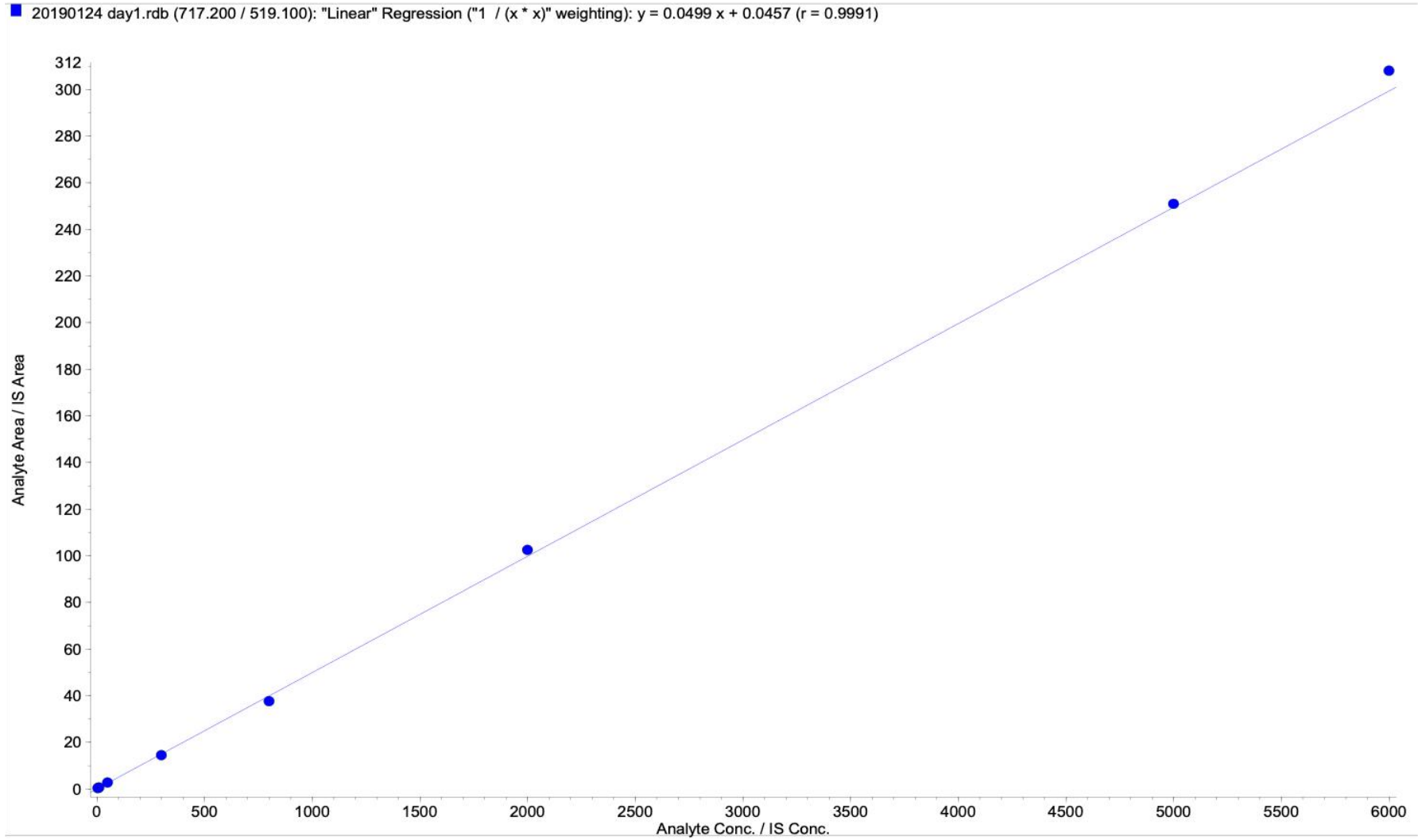
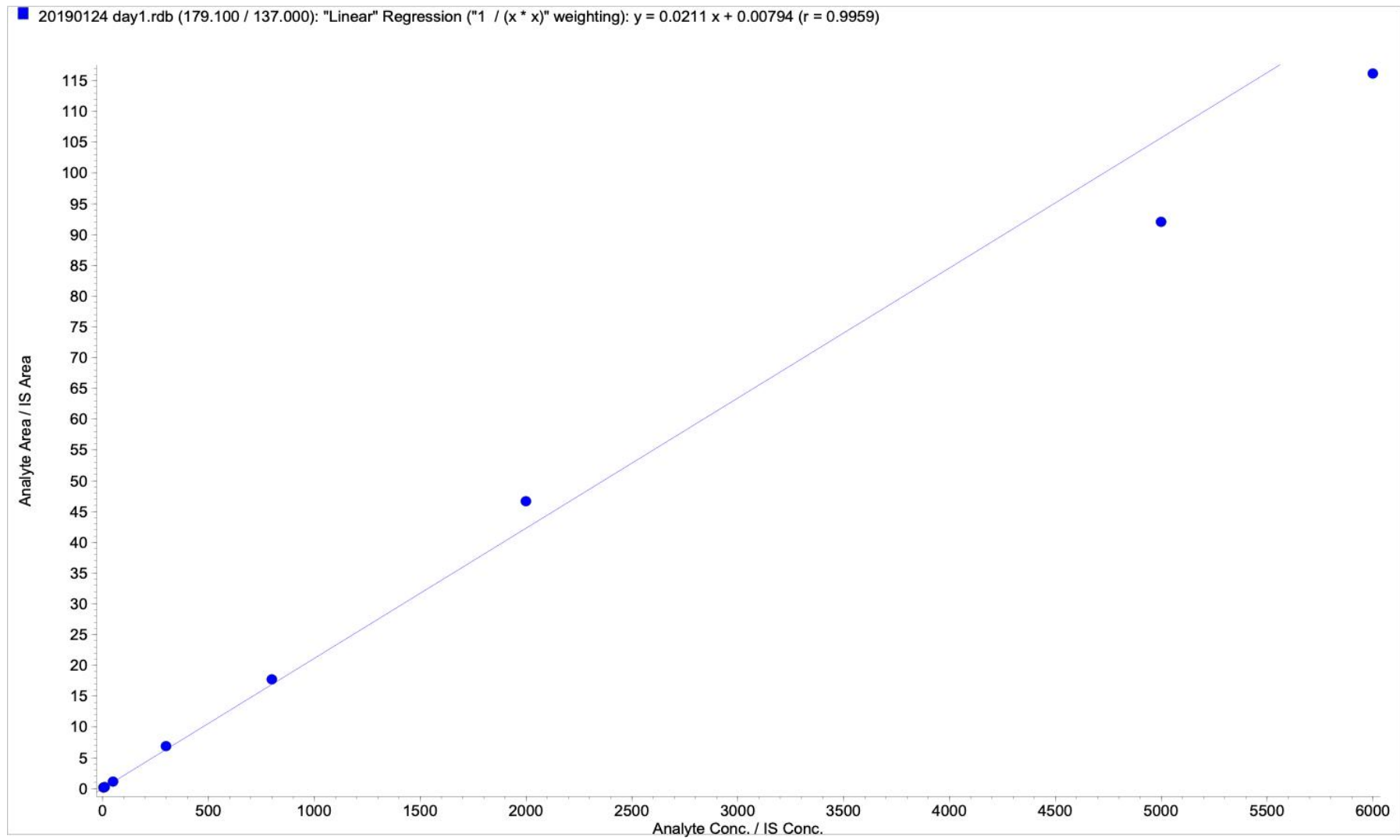


Day1 Curve

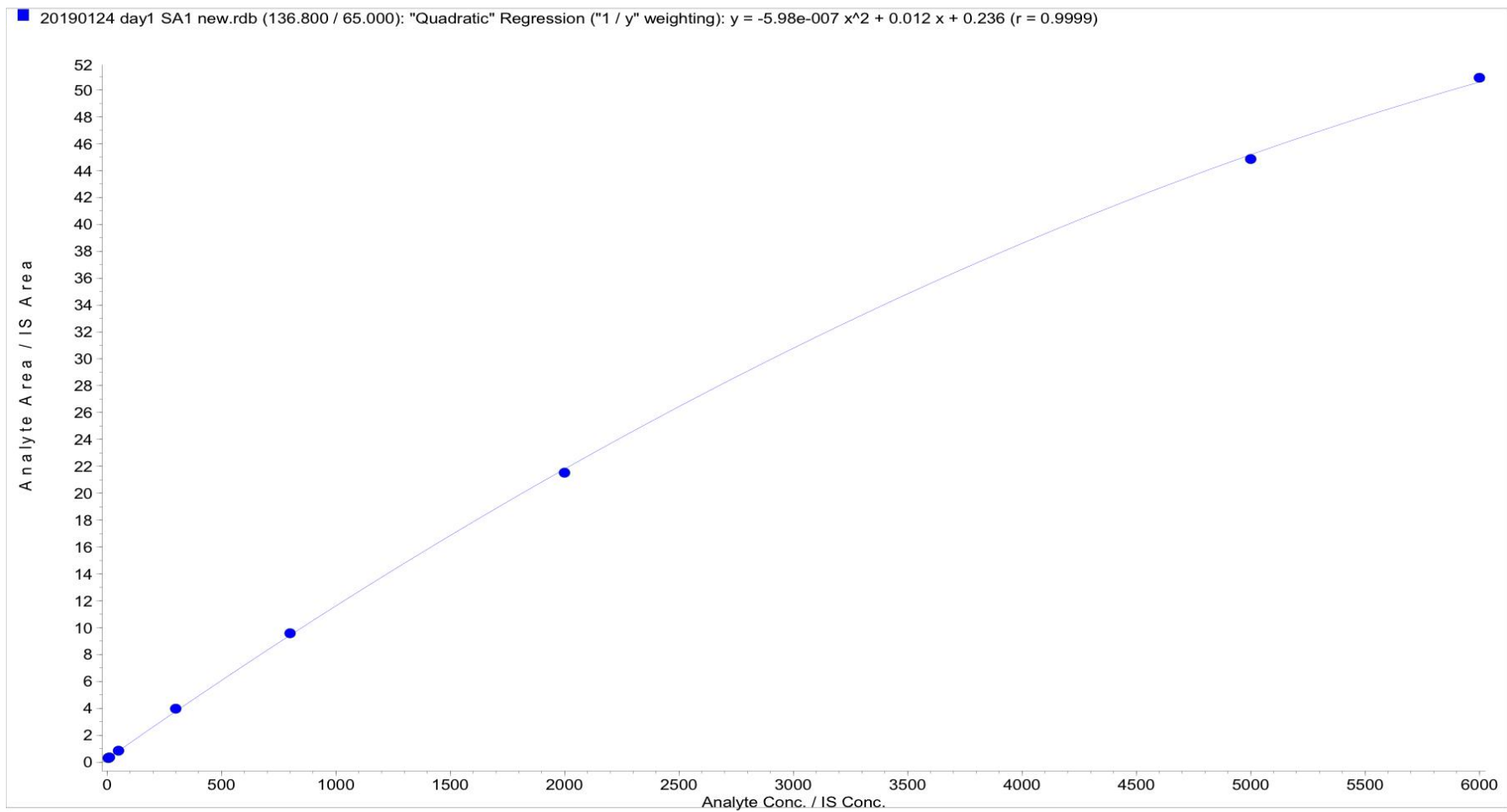
Sal B



ASA

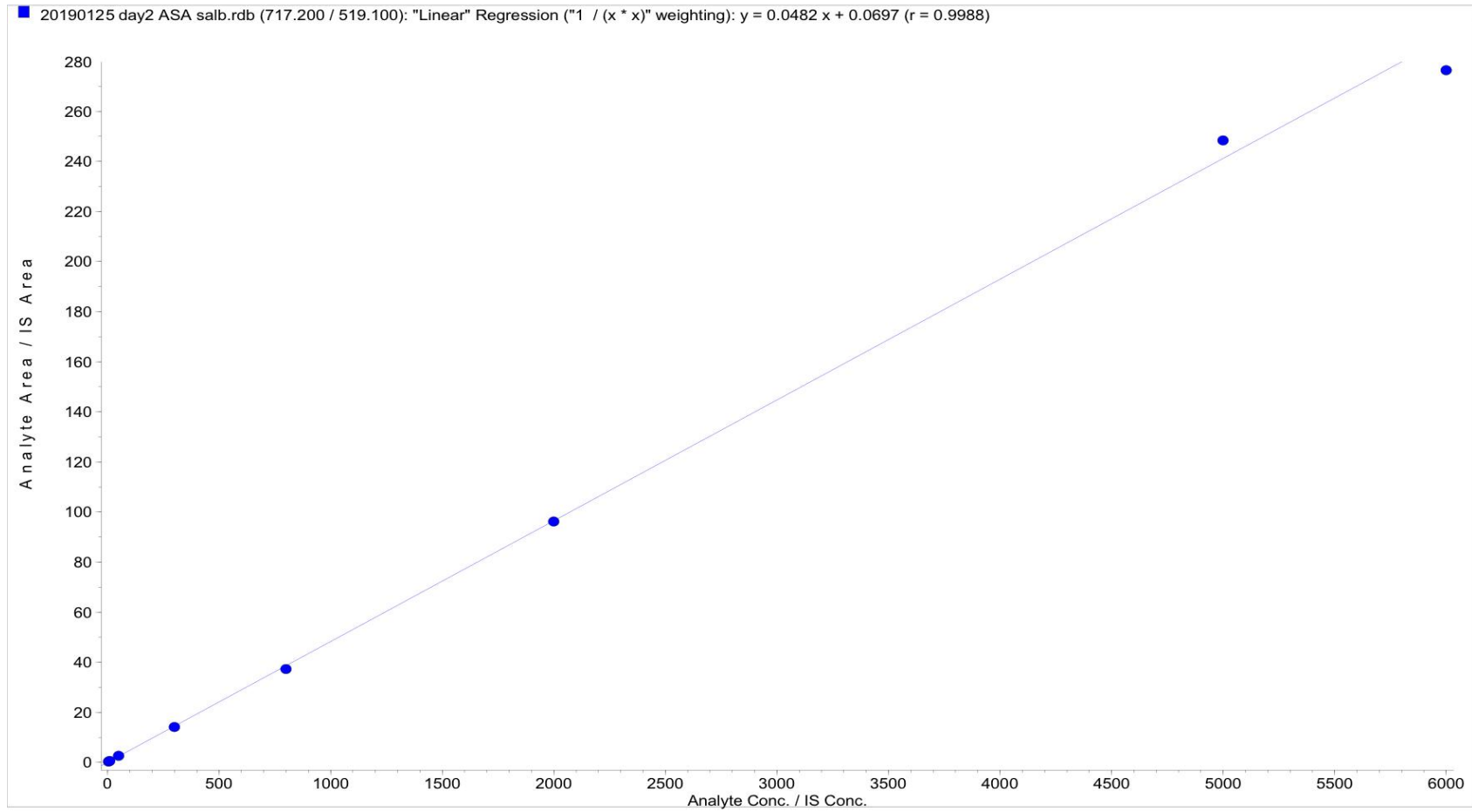


SA

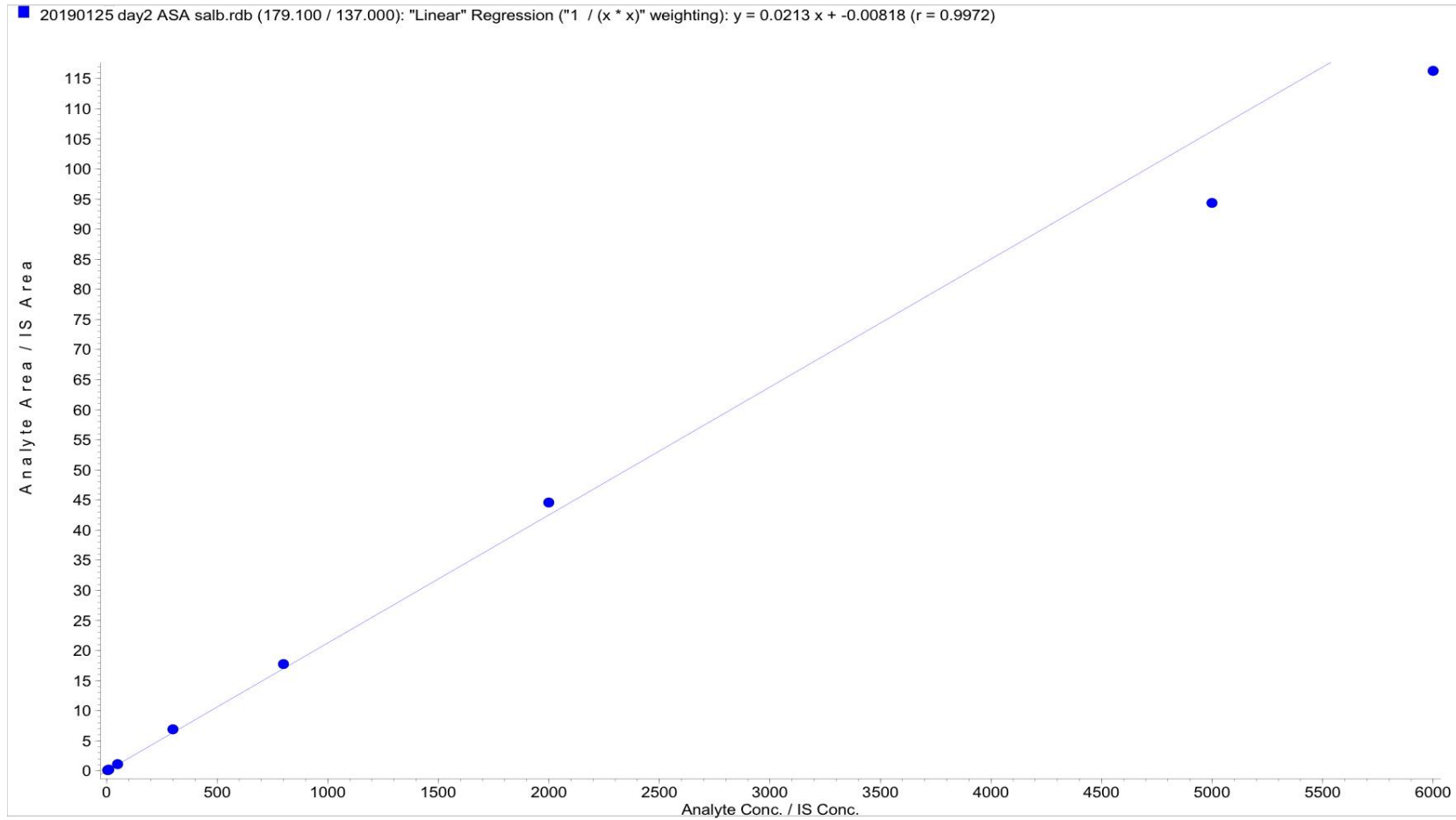


# Day2 Curve

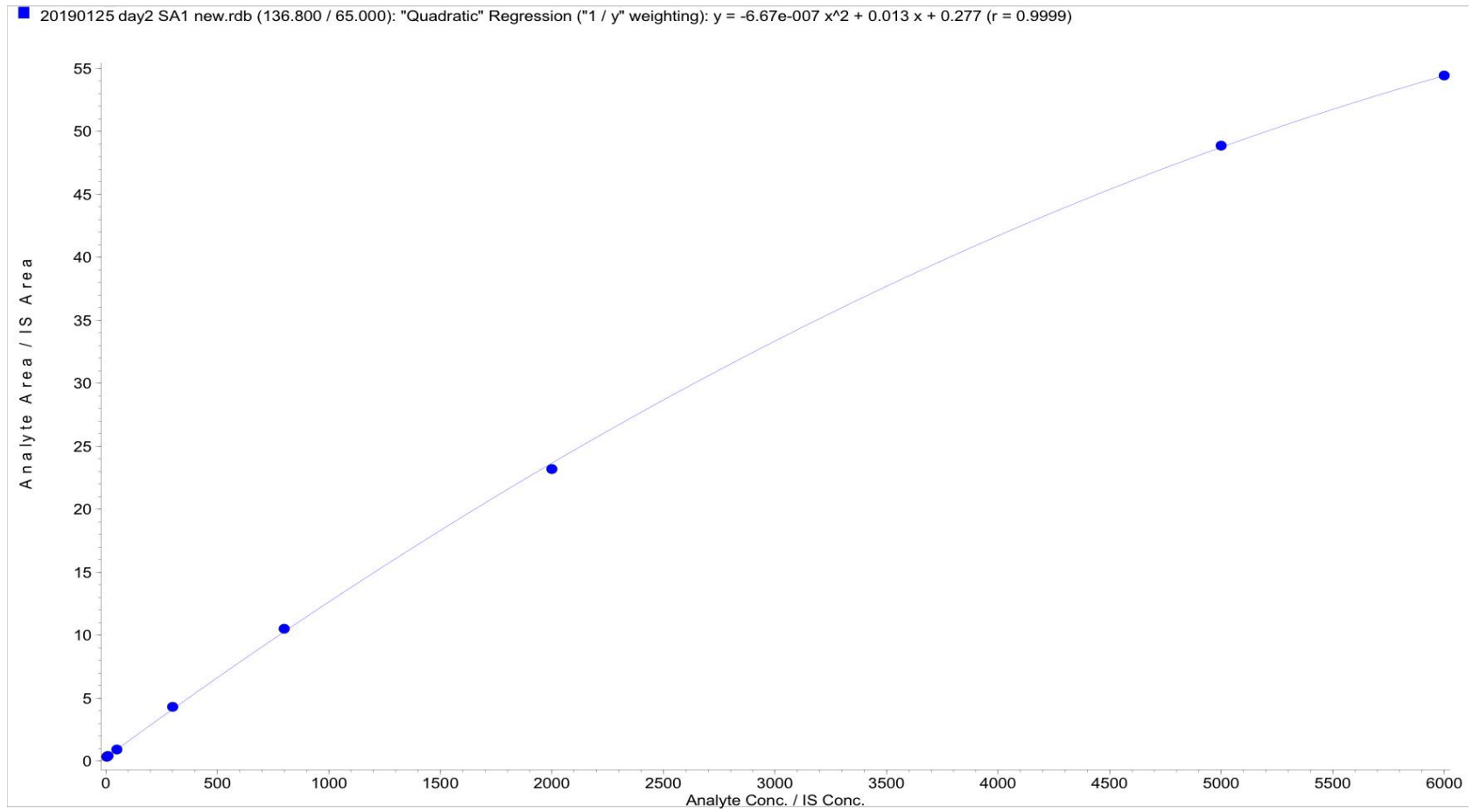
## Sal B



ASA

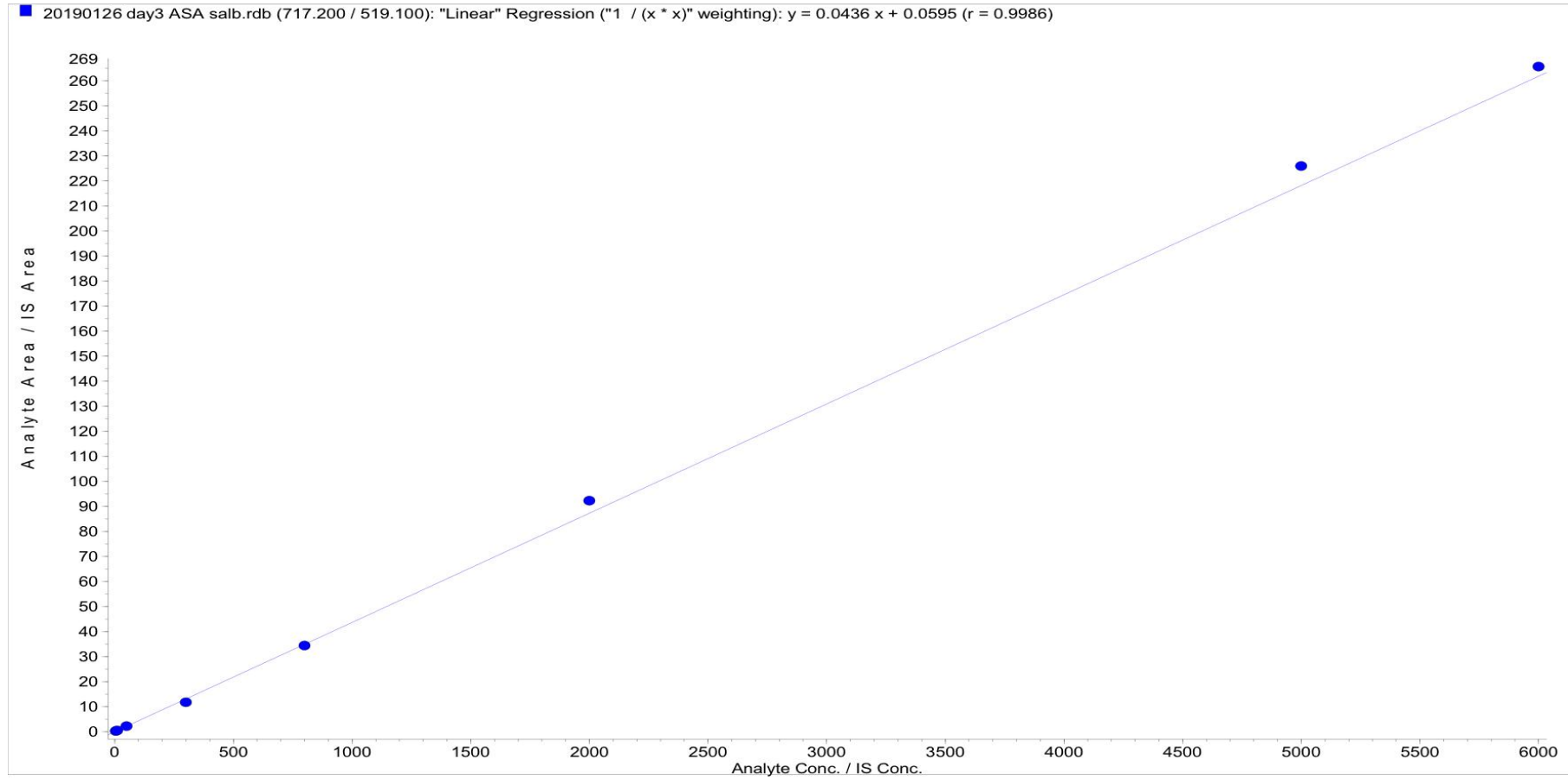


SA

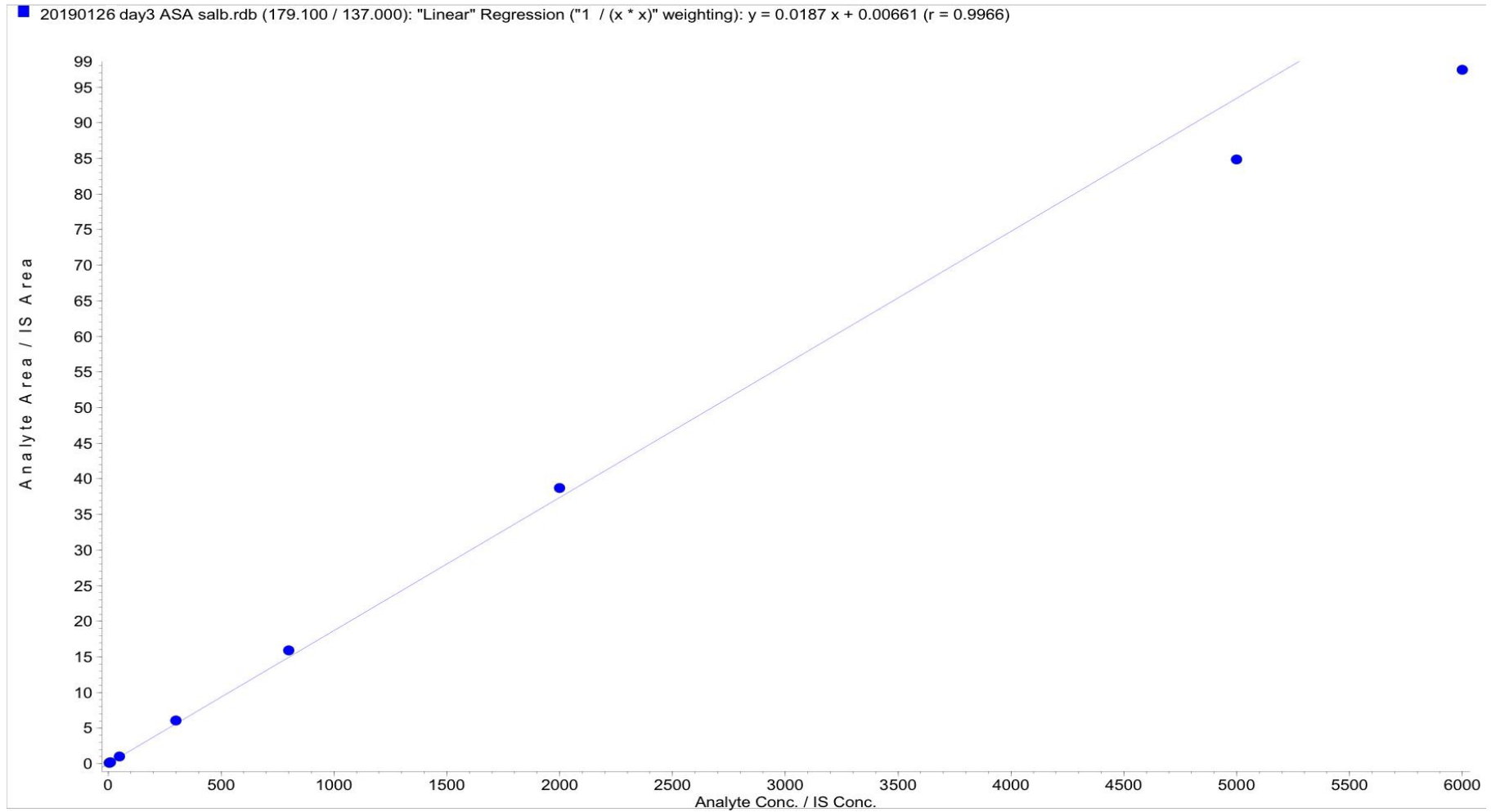


Day3 Curve

Sal B

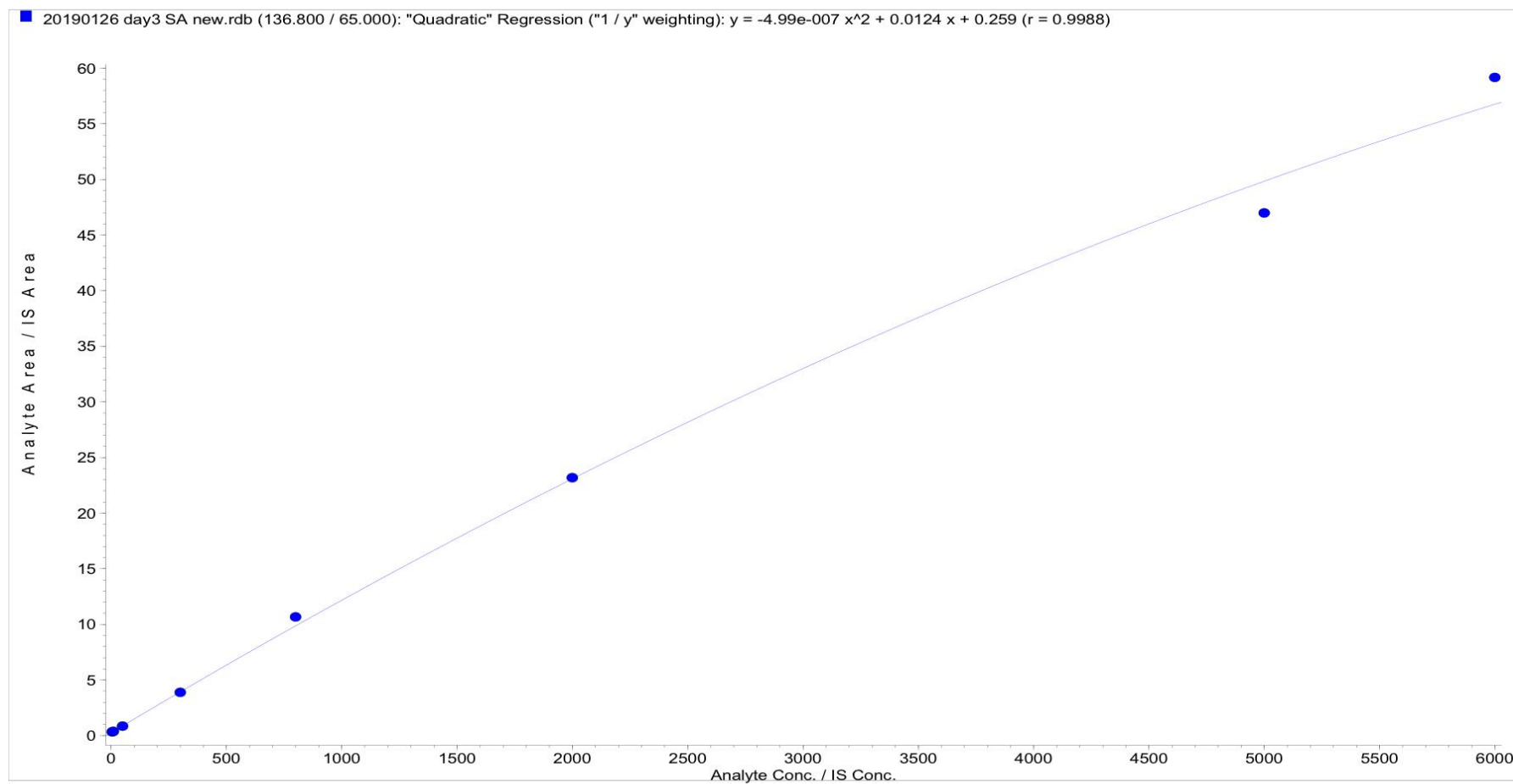


ASA





SA



Precision and accuracy

Sal B

Batch	LLOQ (5ng/ml)			LQC (15ng/ml)			MQC (3000ng/ml)			HQC (4500ng/ml)		
	Conc	Bias%	Accuracy%	Conc	Bias%	Accuracy%	Conc	Bias%	Accuracy%	Conc	Bias%	Accuracy%
1	5.36	7	107.0	15.5	3	103.0	2630	-12.2	87.8	4310	-4.3	95.7
	5.66	13	113.0	14.4	-4	96.0	2860	-4.7	95.3	4300	-4.4	95.6
	5.09	2	102.0	15	-0.2	99.8	2840	-5.4	94.6	4120	-8.4	91.6
	5.21	4	104.0	15.2	1	101.0	2870	-4.3	95.7	4250	-5.5	94.5
	4.9	-2	98.0	15.4	3	103.0	2670	-11	89.0	4480	-0.4	99.6
	4.27	-14.7	85.3	15.8	5	105.0	2610	-13	87.0	4220	-6.1	93.9
2	5.15	3	103.0	15.10	0	100.0	2920	-2.5	97.5	4150	-7.8	92.2
	5.04	1	101.0	13.90	-7.3	92.7	2810	-6.2	93.8	4030	-10.4	89.6
	4.86	-2.8	97.2	15	-0.2	99.8	2620	-12.7	87.3	3980	-11.5	88.5
	5.08	2	102.0	14.1	-5.9	94.1	2870	-4.3	95.7	4220	-6.1	93.9
	4.45	-11	89.0	14.3	-4.4	95.6	2840	-5.5	94.5	4060	-9.8	90.2
	4.76	-4.8	95.2	14.8	-1	99.0	2750	-8.3	91.7	4210	-6.4	93.6
3	4.76	-4.8	95.2	15.6	4	104.0	2720	-9.4	90.6	4670	4	104.0
	5.46	9	109.0	13.70	-8.5	91.5	2750	-8.4	91.6	4640	3	103.0
	4.7	-6	94.0	15.60	4	104.0	2690	-10.2	89.8	4440	-1.4	98.6
	5.14	3	103.0	16.60	11	111.0	2770	-7.8	92.2	4710	5	105.0
	4.52	-9.6	90.4	15.8	6	106.0	2610	-12.8	87.2	4640	3	103.0
	4.49	-10.1	89.9	15.40	3	103.0	2590	-13.8	86.2	4570	2	102.0

ASA

Batch	LLOQ (5ng/ml)			LQC (15ng/ml)			MQC (3000ng/ml)			HQC (4500ng/ml)		
	Conc	Bias%	Accuracy%	Conc	Bias%	Accuracy%	Conc	Bias%	Accuracy%	Conc	Bias%	Accuracy%
1	4.78	-4.4	95.6	12.8	-14.8	85.2	3070	2	102.0	4130	-8.2	91.8
	4.87	-2.7	97.3	14.5	-3.5	96.5	3170	6	106.0	4120	-8.5	91.5
	4.52	-9.6	90.4	13.9	-7.3	92.7	3350	12	112.0	4080	-9.3	90.7
	4.67	-6.6	93.4	14	-6.8	93.2	3400	13	113.0	4310	-4.2	95.8
	4.32	-13.7	86.3	13.5	-9.9	90.1	3220	7	107.0	4480	-0.5	99.5
	4.66	-6.8	93.2	14.1	-6.1	93.9	3030	1	101.0	4210	-6.4	93.6
2	5.83	17	117.0	14.8	-1.6	98.4	3400	13	113.0	4040	-10.3	89.7
	5.08	2	102.0	14.5	-3.4	96.6	3240	8	108.0	3890	-13.5	86.5
	5.36	7	107.0	13.8	-8	92.0	3180	6	106.0	3910	-13.1	86.9
	5.44	9	109.0	14	-6.7	93.3	3320	11	111.0	4250	-5.5	94.5
	5.44	9	109.0	15.3	2	102.0	3160	5	105.0	3870	-14.1	85.9
	5.5	10	110.0	14.7	-1.7	98.3	3220	7	107.0	4040	-10.2	89.8

3	4.48	-10.5	89.5	14.5	-3.1	96.9	2960	-1.2	98.8	4480	-0.4	99.6
	5.24	5	105.0	16.5	10	110.0	2930	-2.2	97.8	4340	-3.6	96.4
	4.69	-6.3	93.7	14.9	-0.9	99.1	3070	2	102.0	4130	-8.3	91.7
	5.02	0	100.0	13.8	-7.7	92.3	3240	8	108.0	4470	-0.7	99.3
	4.61	-7.7	92.3	14.6	-2.4	97.6	3030	1	101.0	4210	-6.5	93.5
	4.76	-4.8	95.2	14.4	-4	96.0	2990	-0.2	99.8	4360	-3.1	96.9

SA

Batch	LLOQ (5ng/ml)			LQC (15ng/ml)			MQC (3000ng/ml)			HQC (4500ng/ml)		
	Conc	Bias%	Accuracy%	Conc	Bias%	Accuracy%	Conc	Bias%	Accuracy%	Conc	Bias%	Accuracy%
1	5.15	3	103.0	16.5	10	110.0	2660	-11.4	88.6	4370	-2.9	97.1
	4.92	-1.6	98.4	16	6	106.0	2660	-11.2	88.8	4320	-4.1	95.9
	6.01	20	120.0	16.7	11	111.0	2700	-10.2	89.8	4140	-7.9	92.1
	5.32	6	106.0	14.5	-3.4	96.6	2800	-6.8	93.2	4340	-3.6	96.4
	5	-0.1	99.9	15.2	2	102.0	2580	-14.1	85.9	4190	-6.9	93.1
	5.87	17	117.0	16.1	7	107.0	2580	-14	86.0	4180	-7	93.0
2	5.23	5	105.0	14.5	-3.4	96.6	2650	-11.7	88.3	4130	-8.3	91.7
	4.9	-2.1	97.9	14.2	-5	95.0	2780	-7.5	92.5	4070	-9.5	90.5
	5.1	2	102.0	16	7	107.0	2610	-12.9	87.1	4040	-10.3	89.7
	5.02	0	100.0	16.6	10	110.0	2600	-13.4	86.6	4300	-4.5	95.5
	5.66	13	113.0	13.2	-12.1	87.9	2630	-12.5	87.5	3870	-14	86.0
	4.66	-6.7	93.3	16.8	12	112.0	2660	-11.4	88.6	4250	-5.6	94.4
3	4.37	-12.7	87.3	16	7	107.0	3010	0	100.0	4480	-0.5	99.5
	4.27	-14.6	85.4	15.8	6	106.0	2960	-1.2	98.8	4590	2	102.0
	5.85	17	117.0	16.2	8	108.0	2820	-6	94.0	4390	-2.4	97.6
	5.39	8	108.0	15.3	2	102.0	2850	-5	95.0	4560	1	101.0
	4.65	-7	93.0	16.3	8	108.0	2740	-8.6	91.4	4540	1	101.0
	5.2	4	104.0	15.8	5	105.0	2920	-2.7	97.3	4470	-0.7	99.3

Matrix Effect

Sal B						
	Peak area in blank solvent	Peak area in pretreated plasma	Matrix Effect %	IS peak area in blank solvent	IS peak area in pretreated plasma	IS-normalized ME %
LQC (15ng/ml)	7.67E+03	7.22E+03	94.13	5.68E+04	6.22E+04	85.96
	7.46E+03	7.55E+03	101.21	5.82E+04	6.32E+04	93.20
	7.83E+03	7.59E+03	96.93	5.87E+04	6.45E+04	88.22
	7.10E+03	7.43E+03	104.65	5.68E+04	6.44E+04	92.30
	7.44E+03	7.49E+03	100.67	5.75E+04	6.22E+04	93.06
	7.24E+03	7.64E+03	105.52	5.89E+04	6.22E+04	99.93
MQC (3000ng/ml)	1.20E+06	1.21E+06	100.83	5.68E+04	6.22E+04	92.08
	1.16E+06	1.15E+06	99.14	5.82E+04	6.32E+04	91.29
	1.20E+06	1.22E+06	101.67	5.87E+04	6.45E+04	92.52
	1.16E+06	1.28E+06	110.34	5.68E+04	6.44E+04	97.32
	1.21E+06	1.22E+06	100.83	5.75E+04	6.22E+04	93.21
	1.24E+06	1.28E+06	103.23	5.89E+04	6.22E+04	97.75
HQC (4500ng/ml)	2.06E+06	2.07E+06	100.49	5.68E+04	6.22E+04	91.76
	2.09E+06	2.00E+06	95.69	5.82E+04	6.32E+04	88.12
	2.11E+06	2.13E+06	100.95	5.87E+04	6.45E+04	91.87
	2.09E+06	2.13E+06	101.91	5.68E+04	6.44E+04	89.89
	2.10E+06	1.98E+06	94.29	5.89E+04	6.22E+04	89.28
	2.09E+06	2.19E+06	104.78	5.75E+04	6.22E+04	96.87

ASA						
	Peak area in blank solvent	Peak area in pretreated plasma	Matrix Effect %	IS peak area in blank solvent	IS peak area in pretreated plasma	IS-normalized ME %
LQC (15ng/ml)	9.62E+03	1.02E+04	106.03	5.68E+04	6.22E+04	96.82
	1.00E+04	1.04E+04	104.00	5.82E+04	6.32E+04	95.77
	1.07E+04	1.08E+04	100.93	5.87E+04	6.45E+04	91.86
	9.85E+03	1.00E+04	101.52	5.68E+04	6.44E+04	89.54
	1.17E+04	1.15E+04	98.29	5.75E+04	6.22E+04	90.86
	9.80E+03	9.86E+03	100.61	5.89E+04	6.22E+04	95.27
MQC (3000ng/ml)	2.73E+06	2.69E+06	98.53	5.76E+04	6.37E+04	89.10

	2.75E+06	2.67E+06	97.09	5.83E+04	6.06E+04	93.41
	2.80E+06	2.73E+06	97.50	5.80E+04	6.02E+04	93.94
	2.74E+06	2.79E+06	101.82	5.72E+04	6.14E+04	94.86
	2.70E+06	2.62E+06	97.04	5.89E+04	5.85E+04	97.70
	2.80E+06	2.57E+06	91.79	6.02E+04	6.10E+04	90.58
HQC (4500ng/ml)	3.79E+06	3.84E+06	101.32	5.68E+04	6.22E+04	92.52
	3.86E+06	3.83E+06	99.22	5.82E+04	6.32E+04	91.37
	3.77E+06	3.82E+06	101.33	5.87E+04	6.45E+04	92.21
	3.87E+06	3.94E+06	101.81	5.68E+04	6.44E+04	89.79
	3.83E+06	3.74E+06	97.65	5.89E+04	6.22E+04	92.47
	3.87E+06	3.98E+06	102.84	5.75E+04	6.22E+04	95.07

SA						
	Peak area in blank solvent	Peak area in pretreated plasma	Matrix Effect %	IS peak area in blank solvent	IS peak area in pretreated plasma	IS-normalized ME %
LQC (15ng/ml)	1.94E+04	2.17E+04	111.86	5.68E+04	6.22E+04	102.14
	2.33E+04	2.21E+04	94.85	5.82E+04	6.32E+04	87.35
	1.95E+04	2.20E+04	112.82	5.87E+04	6.45E+04	102.68
	1.92E+04	2.10E+04	109.38	5.68E+04	6.44E+04	96.47
	2.25E+04	2.20E+04	97.78	5.75E+04	6.22E+04	90.39
	1.87E+04	2.05E+04	109.63	5.89E+04	6.22E+04	103.81
MQC (3000ng/ml)	1.53E+06	1.52E+06	99.35	6.06E+04	6.22E+04	96.79
	1.54E+06	1.46E+06	94.81	6.25E+04	6.13E+04	96.66
	1.56E+06	1.52E+06	97.44	5.94E+04	5.97E+04	96.95
	1.48E+06	1.48E+06	100.00	5.80E+04	6.30E+04	92.06
	1.54E+06	1.46E+06	94.81	6.04E+04	5.97E+04	95.92
	1.58E+06	1.48E+06	93.67	5.98E+04	6.11E+04	91.68
HQC (4500ng/ml)	2.09E+06	2.01E+06	96.17	5.98E+04	6.11E+04	94.13
	2.14E+06	2.02E+06	94.39	6.25E+04	6.13E+04	96.24
	2.07E+06	2.00E+06	96.62	5.94E+04	5.97E+04	96.13
	2.08E+06	2.08E+06	100.00	6.06E+04	6.22E+04	97.43
	2.10E+06	1.99E+06	94.76	6.04E+04	5.97E+04	95.87
	2.08E+06	2.04E+06	98.08	5.80E+04	6.30E+04	90.29

IS			
	Peak area in blank solvent	Peak area in pretreated plasma	Matrix Effect %
	5.68E+04	6.22E+04	109.51
	5.82E+04	6.32E+04	108.59
	5.87E+04	6.45E+04	109.88
	5.68E+04	6.44E+04	113.38
	5.75E+04	6.22E+04	108.17
	5.89E+04	6.22E+04	105.60

Recovery

SalB	LQC (15ng/ml)			MQC (3000ng/ml)			HQC (4500ng/ml)		
	Peak area	Peak area in pretreated plasma	Recovery%	Peak area	Peak area in pretreated plasma	Recovery%	Peak area	Peak area in pretreated plasma	Recovery%
	6.41E+03	7.22E+03	88.78	1.07E+06	1.21E+06	88.43	1.79E+06	2.07E+06	86.47
	6.29E+03	7.55E+03	83.31	1.06E+06	1.15E+06	92.17	1.84E+06	2.00E+06	92.00
	6.62E+03	7.59E+03	87.22	1.03E+06	1.22E+06	84.43	1.77E+06	2.13E+06	83.10
	5.97E+03	7.43E+03	80.35	1.07E+06	1.28E+06	83.59	1.79E+06	2.13E+06	84.04
	5.79E+03	7.49E+03	77.30	1.01E+06	1.22E+06	82.79	1.87E+06	1.98E+06	94.44
	6.31E+03	7.64E+03	82.59	1.03E+06	1.28E+06	80.47	1.82E+06	2.19E+06	83.11

ASA	LQC (15ng/ml)			MQC (3000ng/ml)			HQC (4500ng/ml)		
	Peak area	Peak area in pretreated plasma	Recovery%	Peak area	Peak area in pretreated plasma	Recovery%	Peak area	Peak area in pretreated plasma	Recovery%
	9.18E+03	1.02E+04	90.00	2.67E+06	2.69E+06	99.26	3.58E+06	3.84E+06	93.23
	1.05E+04	1.04E+04	100.96	2.50E+06	2.67E+06	93.63	3.63E+06	3.83E+06	94.78
	1.04E+04	1.08E+04	96.30	2.54E+06	2.73E+06	93.04	3.48E+06	3.82E+06	91.10
	1.01E+04	1.00E+04	101.00	2.68E+06	2.79E+06	96.06	3.70E+06	3.94E+06	93.91
	1.03E+04	9.86E+03	104.46	2.54E+06	2.62E+06	96.95	3.56E+06	3.74E+06	95.19
	1.09E+04	1.15E+04	94.78	2.54E+06	2.57E+06	98.83	3.62E+06	3.98E+06	90.95

SA	LQC (15ng/ml)			MQC (3000ng/ml)			HQC (4500ng/ml)		
	Peak area	Peak area in pretreated plasma	Recovery%	Peak area	Peak area in pretreated plasma	Recovery%	Peak area	Peak area in pretreated plasma	Recovery%
	2.01E+04	2.10E+04	95.71	1.42E+06	1.52E+06	93.42	1.92E+06	2.01E+06	95.52
	1.97E+04	1.99E+04	98.99	1.39E+06	1.46E+06	95.21	1.96E+06	2.02E+06	97.03
	1.92E+04	2.17E+04	88.48	1.41E+06	1.52E+06	92.76	1.88E+06	2.00E+06	94.00
	1.95E+04	2.05E+04	95.12	1.42E+06	1.48E+06	95.95	1.93E+06	2.08E+06	92.79
	2.03E+04	2.20E+04	92.27	1.38E+06	1.46E+06	94.52	1.95E+06	1.99E+06	97.99
	1.95E+04	2.21E+04	88.24	1.42E+06	1.48E+06	95.95	1.91E+06	2.04E+06	93.63

IS	Peak area	Peak area in pretreated plasma	Recovery%
	5.61E+04	6.22E+04	
5.81E+04	6.32E+04	108.78	
6.14E+04	6.45E+04	105.05	
5.71E+04	6.44E+04	112.78	
5.74E+04	6.22E+04	108.36	
6.45E+04	6.22E+04	96.43	



## Stability

Sal B

Long 60 day	LQC (15ng/ml)			MQC (3000ng/ml)			HQC (4500ng/ml)		
	Conc.	Bias%	Accuracy%	Conc.	Bias%	Accuracy%	Conc.	Bias%	Accuracy%
	15	0	100	2880	-4	96	4560	1	101
	16.4	9	109	2890	-3.6	96.4	4530	1	101
	16.8	12	112	2890	-3.8	96.2	4090	-9.1	90.9
	15.2	2	102	3010	0	100	4560	1	101
	15.4	2	102	2990	-0.5	99.5	4420	-1.7	98.3
	16.7	11	111	2860	-4.8	95.2	4470	-0.8	99.2
Short 4h (acidified)	LQC (15ng/ml)			MQC (3000ng/ml)			HQC (4500ng/ml)		
	Conc.	Bias%	Accuracy%	Conc.	Bias%	Accuracy%	Conc.	Bias%	Accuracy%
	16.1	8	108	2810	-6.4	93.6	4770	6	106
	15.2	1	101	2800	-6.6	93.4	4170	-7.4	92.6
	13.8	-7.8	92.2	2630	-12.3	87.7	4090	-9.1	90.9
	16.4	10	110	2780	-7.3	92.7	4660	3	103
	15	0	100	2870	-4.2	95.8	4400	-2.1	97.9
	14.5	-3.1	96.9	2710	-9.6	90.4	4130	-8.3	91.7
24h in autosampler	LQC (15ng/ml)			MQC (3000ng/ml)			HQC (4500ng/ml)		
	Conc.	Bias%	Accuracy%	Conc.	Bias%	Accuracy%	Conc.	Bias%	Accuracy%
	17	14	114	3110	4	104	4090	-9.1	90.9
	17.1	14	114	2950	-1.8	98.2	4780	6	106
	16.1	7	107	3080	3	103	4600	2	102
Short 4h (unacidified)	LQC (15ng/ml)			MQC (3000ng/ml)			HQC (4500ng/ml)		
	Conc.	Bias%	Accuracy%	Conc.	Bias%	Accuracy%	Conc.	Bias%	Accuracy%
	11	-26.7	73.3	2510	-16.3	83.7	4110	-8.6	91.4
	10.7	-28.7	71.3	2620	-12.8	87.2	3930	-12.7	87.3
	9.21	-38.6	61.4	2570	-14.3	85.7	3870	-14.1	85.9
	11.6	-22.6	77.4	2550	-14.8	85.2	4240	-5.9	94.1
	9.39	-37.4	62.6	2680	-10.6	89.4	3790	-15.8	84.2
	8.76	-41.6	58.4	2550	-15	85	3990	-11.4	88.6

ASA

Long 60 day	LQC (15ng/ml)			MQC (3000ng/ml)			HQC (4500ng/ml)		
	Conc.	Bias%	Accuracy%	Conc.	Bias%	Accuracy%	Conc.	Bias%	Accuracy%
	14.6	-3	97	3130	4	104	4450	-1.2	98.8
	14.4	-4.3	95.7	3100	3	103	4240	-5.8	94.2
	13.9	-7.3	92.7	3100	3	103	4120	-8.4	91.6
	14.8	-1.6	98.4	3080	3	103	4220	-6.2	93.8
	13.5	-10.3	89.7	3150	5	105	4220	-6.3	93.7
	13.6	-9.4	90.6	3140	5	105	4200	-6.7	93.3
Short 4h (acidified)	LQC (15ng/ml)			MQC (3000ng/ml)			HQC (4500ng/ml)		
	Conc.	Bias%	Accuracy%	Conc.	Bias%	Accuracy%	Conc.	Bias%	Accuracy%
	16.8	12	112	3310	10	110	4560	1	101
	16	7	107	3280	9	109	4440	-1.4	98.6
	16.1	7	107	3180	6	106	4330	-3.7	96.3
	15.5	3	103	3390	13	113	4780	6	106
	16.2	8	108	3120	4	104	4530	1	101
	14.9	-0.8	99.2	3280	9	109	4180	-7.1	92.9
24h in autosampler	LQC (15ng/ml)			MQC (3000ng/ml)			HQC (4500ng/ml)		
	Conc.	Bias%	Accuracy%	Conc.	Bias%	Accuracy%	Conc.	Bias%	Accuracy%
	17.3	15	115	3460	15	115	4990	11	111
	17.1	14	114	3300	10	110	4800	7	107
	16.7	11	111	3310	10	110	4450	-1.1	98.9
Short 4h (unacidified)	LQC (15ng/ml)			MQC (3000ng/ml)			HQC (4500ng/ml)		
	Conc.	Bias%	Accuracy%	Conc.	Bias%	Accuracy%	Conc.	Bias%	Accuracy%
	7.74	-48.4	51.6	1620	-45.9	54.1	2760	-38.6	61.4
	7.82	-47.9	52.1	1730	-42.4	57.6	2590	-42.5	57.5
	9.01	-39.9	60.1	1750	-41.5	58.5	2640	-41.3	58.7
	8.92	-40.5	59.5	1770	-41.1	58.9	3100	-31.1	68.9
	8.43	-43.8	56.2	1830	-39	61	2730	-39.3	60.7
	8.9	-40.7	59.3	1870	-37.6	62.4	2780	-38.3	61.7

SA

Long 60 day	LQC (15ng/ml)			MQC (3000ng/ml)			HQC (4500ng/ml)		
	Conc.	Bias%	Accuracy%	Conc.	Bias%	Accuracy%	Conc.	Bias%	Accuracy%
	16.4	9	109	3260	9	109	4470	-0.7	99.3
	13.1	-12.7	87.3	3070	2	102	4620	3	103
	15.5	4	104	3030	1	101	4560	1	101
	14.4	-4	96	3110	4	104	4510	0	100
	15.2	1	101	3210	7	107	4840	7	107
14.2	-5.3	94.7	3150	5	105	4810	7	107	
Short 4h (acidified)	LQC (15ng/ml)			MQC (3000ng/ml)			HQC (4500ng/ml)		
	Conc.	Bias%	Accuracy%	Conc.	Bias%	Accuracy%	Conc.	Bias%	Accuracy%
	15.7	4	104	2860	-4.8	95.2	4170	-7.3	92.7
	16	7	107	2900	-3.3	96.7	4270	-5	95
	17.1	14	114	2860	-4.8	95.2	4310	-4.2	95.8
	16.6	11	111	2880	-3.9	96.1	4260	-5.2	94.8
	14.6	-2.7	97.3	2890	-3.7	96.3	4450	-1.1	98.9
16.6	10	110	2960	-1.2	98.8	4300	-4.5	95.5	
24h in autosampler	LQC (15ng/ml)			MQC (3000ng/ml)			HQC (4500ng/ml)		
	Conc.	Bias%	Accuracy%	Conc.	Bias%	Accuracy%	Conc.	Bias%	Accuracy%
	16	7	107	2730	-9.1	90.9	4130	-8.3	91.7
	14.5	-3.1	96.9	2820	-6	94	4450	-1.1	98.9
17.1	14	114	2840	-5.5	94.5	4120	-8.5	91.5	
Short 4h (unacidified)	LQC (15ng/ml)			MQC (3000ng/ml)			HQC (4500ng/ml)		
	Conc.	Bias%	Accuracy%	Conc.	Bias%	Accuracy%	Conc.	Bias%	Accuracy%
	18.2	21	121	3670	22	122	5850	30	130
	18.2	22	122	3880	29	129	5900	31	131
	19.2	28	128	3810	27	127	6030	34	134
	18.3	22	122	3740	25	125	5530	23	123
	18.2	21	121	3800	27	127	5530	23	123
17.5	17	117	3700	23	123	5590	24	124	