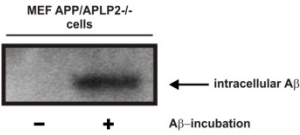


supplementary figure 1



<i>Age at death</i>	<i>B&B</i>	<i>CERAD</i>	<i>NP -Diagnosis</i>	<i>sex</i>
46	I	0	control	F
56	VI	C	AD	F
53	n.d.	n.d.	control	F
65	V-VI	C	AD	F
55	0	0	control	F
68	VI	C	AD	F
67	V-VI	C	AD	F
75	III-IV	B	control	F
73	V-VI	C	AD	F
75	VI	C	AD	F
73	n.d.	n.d.	AD	F
76	III-IV	C	control	F
76	V-VI	C	AD	F
78	V-VI	C	AD	F
77	II	C	control	F
78	VI	C	AD	F
78	VI	C	AD	F
79	V	C	AD	F
77	II	A	control	F
80	V	C	AD	F
82	V	C	AD	F
85	VI	C	AD	F
80	III-IV	0	control	F
82	V-VI	C	AD	F
85	III	C	AD	F
85	IV	C	AD	F
83	II	0	control	F
81	n.d.	n.d.	AD	F
88	VI	C	AD	F
90	n.d.	n.d.	AD	F
85	I	0	control	F
88	V	C	AD	F
89	III-IV	C	AD	F

<i>Age at death</i>	<i>B&B</i>	<i>CERAD</i>	<i>NP -Diagnosis</i>	<i>sex</i>
88	I-II	B	control	F
93	V-VI	C	AD	F
93	V	C	AD	F
97	V	C	AD	F
50	0	0	control	M
62	VI	C	AD	M
53	I	0	control	M
70	VI	C	AD	M
54	0	0	control	M
73	V-VI	C	AD	M
59	I-II	0	control	M
75	VI	C	AD	M
60	0	0	control	M
76	V	B	AD	M
61	0	0	control	M
80	V	C	AD	M
63	I	0	control	M
80	V	C	AD	M
71	0-I	0	control	M
83	VI	C	AD	M
85	III-IV	B	control	M
87	V	C	AD	M
87	V	C	AD	M
87	I-II	0	control	M
93	IV	B	AD	M
18	0	0	control	M
39	VI	C	AD	M
46	0	0	control	M
49	VI	C	AD	M
53	0	n.d.	control	M
57	VI	C	AD	M

Supplemental table 1: Overview of human SAD and corresponding control brains used in this study.

<i>Age at death</i>	<i>B&B</i>	<i>CERAD</i>	<i>NP -Diagnosis</i>	<i>sex</i>
46	0	0	control	M
39	VI	C	FAD (I143T)	M
55	0	0	control	F
57	VI	C	FAD (L174R)	F
53	0	n.d.	control	M
57	VI	C	FAD (L286V)	M

Supplemetanl table 2: Overview of human FAD and corresponding control brains used in this study.