

Biorad gel tray; 1.0% HGT(P); 30ml

Electrophoresis 40mA for 3 hours

Transfer at 400mA for 4 hours

1st Ab; anti-VWF pAb 1: 2,000 for O/N

2nd Ab: LiCOR anti-rabbit 1:20,000 for 1 hour

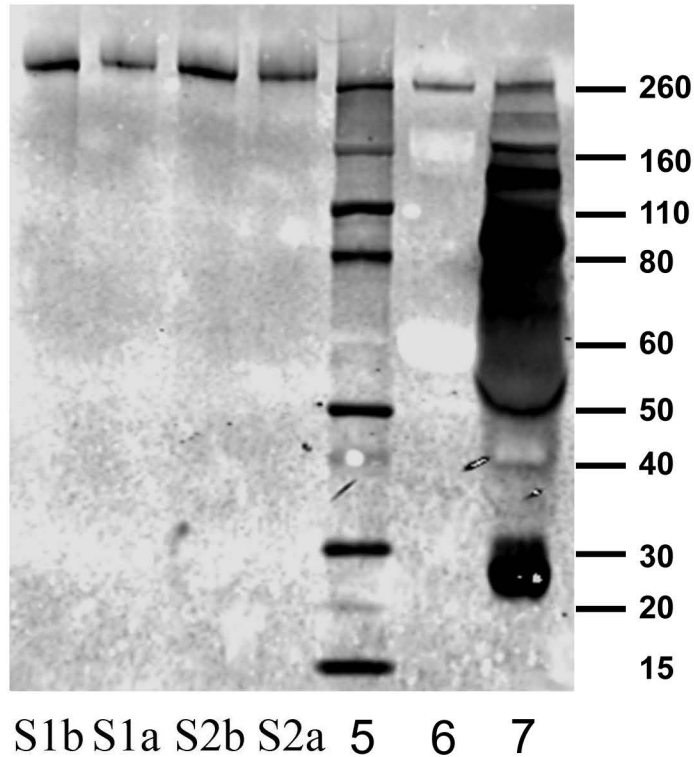
S1b no EDTA no ADAMTS13, before shear; 3 μ g/ml

S1a no EDTA with ADAMTS13, after shear; 2 μ g/ml

S2b + EDTA no ADAMTS13, before shear; 3 μ g/ml

S2a + EDTA with ADAMTS13, after shear; 2 μ g/ml

Western blotting



4-12% Tris-Bis Reduced
anti-VWF pAb

- S1b no EDTA no ADAMTS13, before shear; 3 μ g/ml
- S1a no EDTA with ADAMTS13, after shear; 2 μ g/ml
- S2b + EDTA no ADAMTS13, before shear; 3 μ g/ml
- S2a + EDTA with ADAMTS13, after shear; 2 μ g/ml

loaded 20 μ l each (=40-60ng)

5- MW Marker

6- rVWF from Baxter (20ng)

7- NPP (2 μ L)