

**Article title:** MiR-195 inhibits tumor growth and metastasis in papillary thyroid carcinoma **cell lines** by targeting CCND1 and FGF2

**Journal name:** International Journal of Endocrinology

**Author names:**

Yali Yin<sup>1\*</sup>, Shubin Hong<sup>1\*</sup>, Shuang Yu<sup>1</sup>, Yanrui Huang<sup>1</sup>, Shuwei Chen<sup>2,3</sup>, Yujie Liu<sup>4</sup>, Quan Zhang<sup>2</sup>, Yanbing Li<sup>1</sup>, Haipeng Xiao<sup>1 #</sup>

**Institutional addresses:**

<sup>1</sup>Department of Endocrinology, The First Affiliated Hospital of Sun Yat-Sen University, Guangzhou, 510080, China.

<sup>2</sup>Department of Head and Neck Surgery, Sun Yat-Sen University Cancer Center, Guangzhou, 510060, China.

<sup>3</sup>State Key Laboratory of Oncology in South China, Collaborative Innovation Center of Cancer Medicine, Guangzhou, China.

<sup>4</sup>Breast Tumor Center, Sun Yat-Sen Memorial Hospital, Sun Yat-Sen University, Guangzhou, 510120, China.

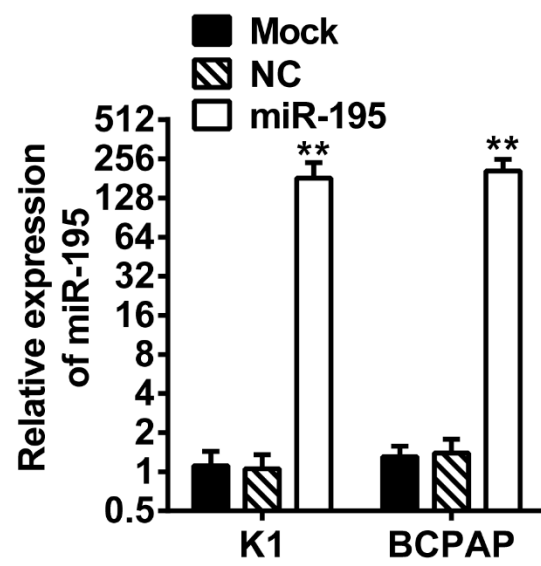
**Author E-mail:**

Yali Yin: smart\_yyl@163.com; Shubin Hong: robin151208@sina.com; Shuang Yu: shuang.yu@aliyun.com; Yanrui Huang: you9251@163.com; Shuwei Chen: chenshuw@sysucc.org.cn; Yujie Liu: liuyujie554@163.com; Quan Zhang: zhangquan@sysucc.org.cn; Yanbing Li: easd04lyb@126.com; Haipeng Xiao: xiaohp@mail.sysu.edu.cn

\*These authors have contributed equally to this work.

# Correspondence: Haipeng Xiao, xiaohp@mail.sysu.edu.cn, T: 86(20)87755776-8803.

Running title : Downregulation of *miR-195* in papillary thyroid carcinoma.



**Supplementary Fig. 1.** The relative expression of *miR-195* in mimics transfected cells is significantly higher than control cells. \*\*  $P < 0.01$ , compared with control group.

**Supplementary Table 1.** Clinicopathologic features of PTC with associated miR-195 relative expression

<i>Clinicopathologic features</i>	<i>n</i>	<i>miR-195</i>	<i>P value</i>
Age, years			
<45	28	0.69±0.31	0.33
≥45	10	0.80±0.38	
Sex			
Male	12	0.73±0.35	0.86
Female	26	0.71±0.32	
Tumor size, cm			
<2	20	0.70±0.33	0.79
≥2	18	0.73±0.34	
Multicentricity			
No	25	0.73±0.33	0.80
Yes	13	0.70±0.34	
Extrathyroidal invasion			
No	15	0.78±0.38	0.14
Yes	23	0.63±0.21	
Cervical LN metastasis			
No	11	0.87±0.36	0.07
Yes	27	0.66±0.28	
TNM stage			
I/II	28	0.81±0.38	0.33
III/IV	10	0.69±0.31	

PTC, papillary thyroid carcinoma; LN, lymph node; TNM, tumor, node, metastasis, classification.