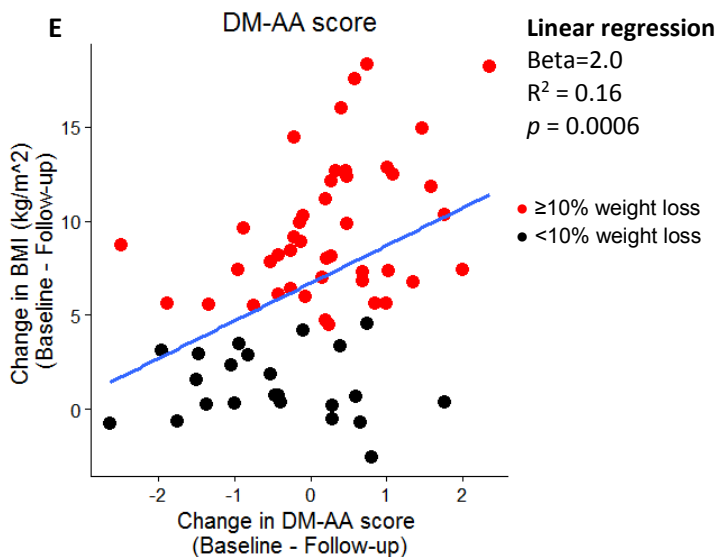
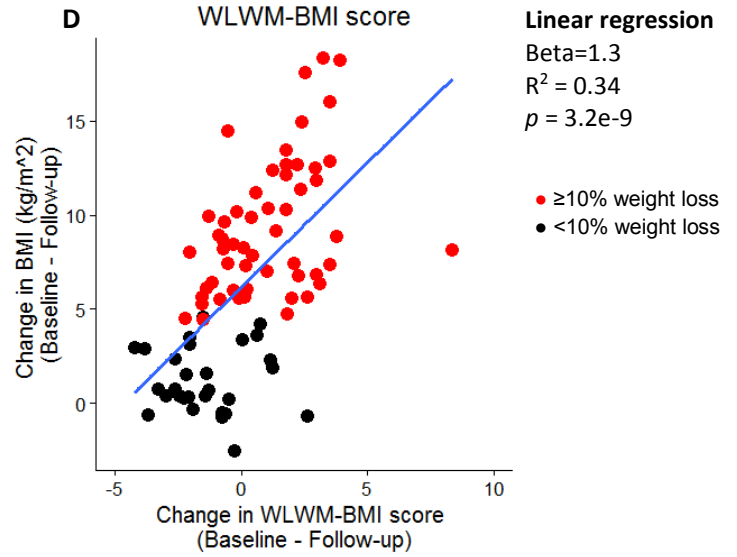
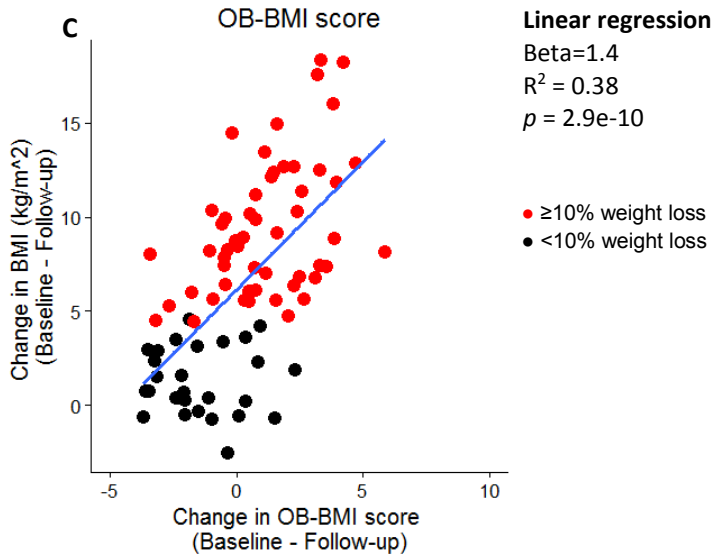
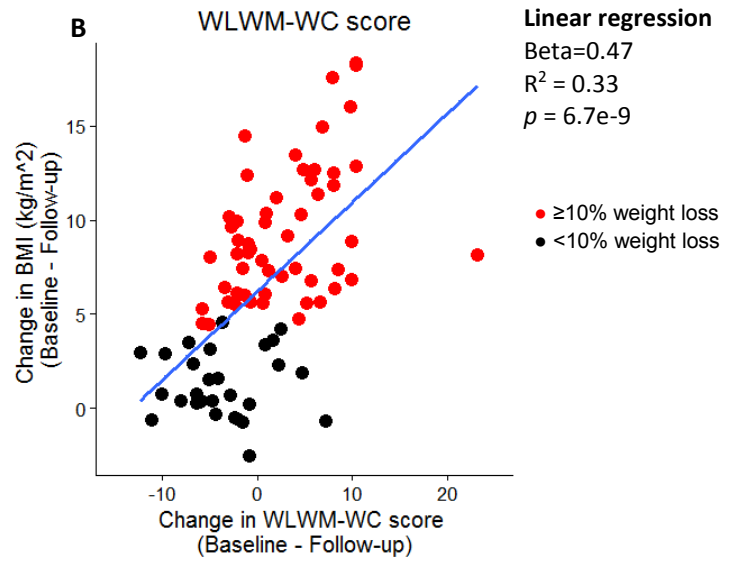
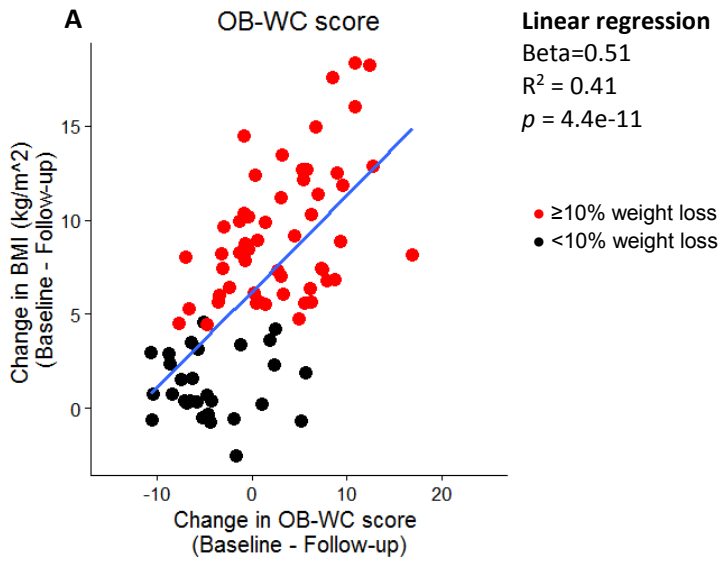


Supplementary Figure 3



The association between change in BMI and change in OB-WC (A), WLWM-WC (B), OB-BMI (C), WLWM-BMI (D) and DM-AA scores (E). The correlation coefficient for change in BMI and change in OB-WC ($R=0.63$, $p<0.0001$), change in WLWM-WC ($R=0.60$, $p<0.0001$), change in OB-BMI ($R=0.62$, $p<0.0001$), change in WLWM-BMI ($R=0.62$, $p<0.0001$), and DM-AA score ($R=0.41$, $p=0.0006$). Spearman's rank correlation coefficient was used for each analysis. Individuals with T2D were excluded ($n=17$) when analyzing the DM-AA score.