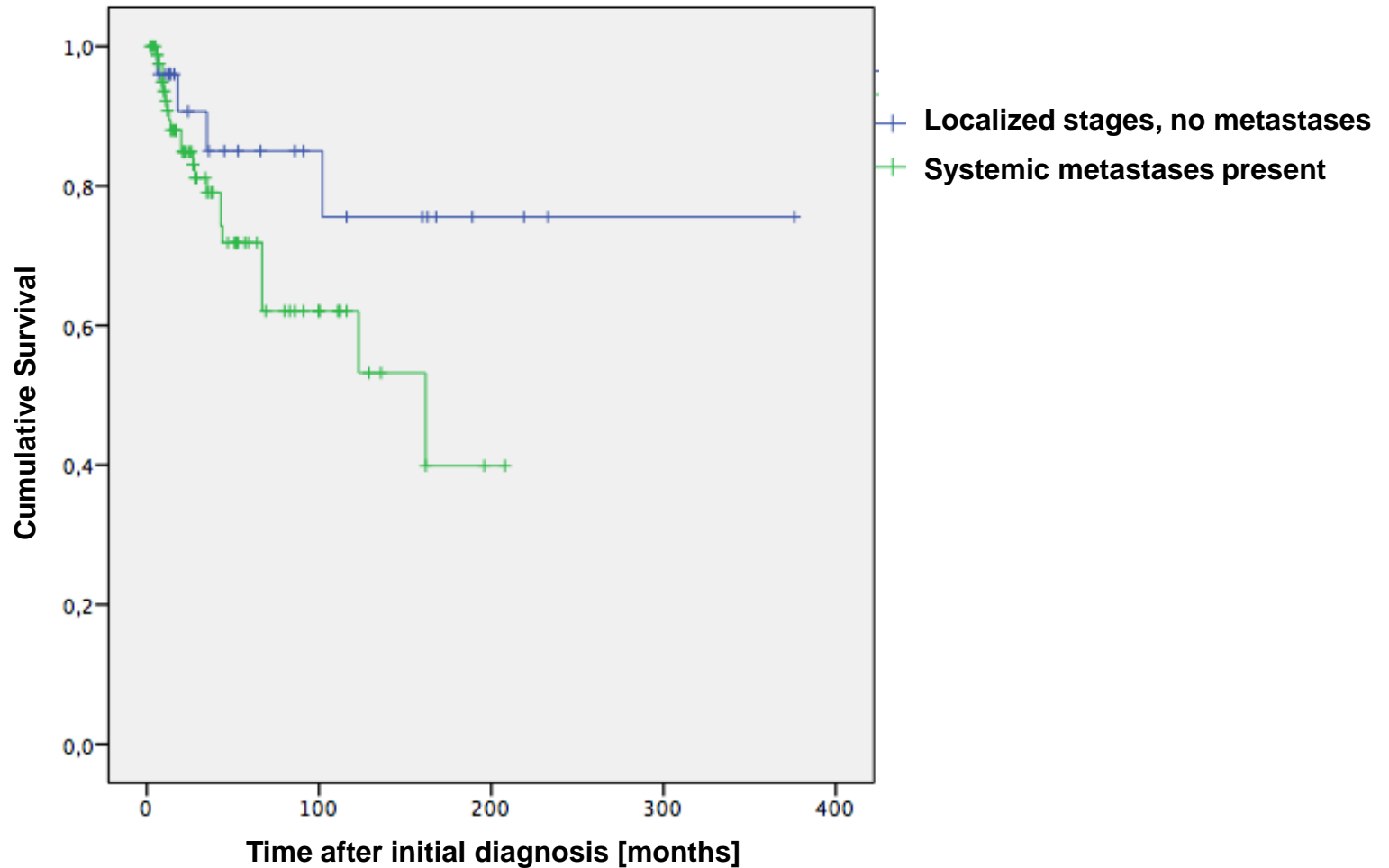


Supplemental Figure 1



Legend to Supplemental Figure 1:

Presence of systemic metastases confers adverse prognosis in neuroendocrine neoplasia

(Kaplan-Meier analysis of overall survival).

Supplemental Table 1:

Patient survival vs. presence of systemic metastases

	Systemic metastases present (n=85)	No metastases (n=25)
1-year survival rate	85%	95%
5-year survival rate	76%	72%
10-year survival rate	0%	40%

Supplemental Table 2:

Frequency of chemotherapy administration versus proliferation index (n=92).

Ki67 [%]	Chemotherapy applied	
	n	(%)
<2	2/28	7
3-5	3/16	19
6-20	11/24	46
21-49	8/10	80
>50	14/14	100

Supplemental Table 3:

Therapeutic efficacy of platinum-based chemotherapy.

Regimen	Best response				PFS ¹		
	CR	PR	SD	PD	Median	Mean	SD ²
Carboplatin/ Etoposid	0	8	5	5	5	7.3	16
Cisplatin/ Etoposid	0	1	3	1	7	5.2	8.9

¹PFS: Progression-free survival [months]

²SD: standard deviation

Supplemental Table 4:

Frequency of PRRT versus histological grading or proliferation index.

Parameter	Fraction treated with PRRT
NET G1 / G2	55/75 (73%)
NEC G3	6/26 (23%)
Ki67<20%	50/68 (74%)
Ki67 21-50%	5/10 (50%)
Ki67 >50%	1/14 (7%)

Supplemental Table 5:

Therapeutic response to PRRT versus histological grade.

Histological Grade	CR	PR	SD	PD	MR
G1	0/19 (0%)	6/19 (32%)	11/19 (58%)	2/19 (11%)	0/19 (0%)
G2	0/21	7/21 (33%)	12/21 (57%)	1/21 (5%)	1/21 (5%)
G3	0/5 (0%)	2/5 (40%)	3/5 (60%)	0/5 (0%)	0/5 (0%)